

Pictures From The Past

NEWSLETTER OF THE
COLORADO ROCK ART ASSOCIATION (CRAA)
A Chapter of the Colorado Archaeological Society

<http://www.coloradorockart.org>

December 2016

Volume 7, Issue 10

Inside This Issue

Upcoming CRAA events +
2017 Conferences
.....starts on page 2

Feature Article: *Huerfano
Butte, New Mexico, as the
Model for Painted Mountains
at Mesa Verde?*
.....page 4

Update on Historic
Preservation Fund
Reauthorization
..... page 9

Ideas for Rock- Art Themed
Holiday Gifts
..... page 10



President's Corner **By Anne Robinson, CRAA President**

We are happy to report that our membership has reached 121 members. Thanks to all of our members for joining or renewing in 2016.

Join us on our Facebook page "Friends Who Like Colorado Rock Art Association". This is a closed group where you can feel comfortable sharing your Rock Art Photos with the group.

We are looking for a new treasurer to replace Bob Tipton. The treasurer pays the bills, processes memberships and does quarterly a quarterly and year balance sheet and P&L. In addition, the treasurer participates in monthly conference calls and periodic in-person Saturday board meetings. If you are interested in this position please contact us at coloradorockartassociation@yahoo.com. Working on the CRAA board is a great way to help shape the direction of CRAA.

CRAA would like to offer live online lectures to our members. If you have a web seminar application we could use, we would appreciate it. See page 9 for details.

This month's feature article is *Huerfano Butte, New Mexico, as the Model for Painted Mountains at Mesa Verde?* by Peter Faris. It explores some thoughts inspired by Steve Lekson at the Colorado Archaeological Society Conference in October 2016.

Best wishes to you and your family for peace and happiness in 2017.

Upcoming Rock Art Events

2017

Please let us know if you would be interested in leading a CRAA field trip. Contact us at coloradorockartassociation@yahoo.com if you would like to lead a trip in 2017. We are an all-volunteer organization and would love your participation.

Texas Rock Art Trip

April 3 to 7 to various locations in Texas. Plan on two travel days on each end. Also on April 1 there will be a bonus day at Hueco Tanks for those who can make it.

Leader: Teresa Weedon

Details to come.

Colorado Rock Art Association (CRAA)

May 6-7, 2017 in Craig, Colorado

Website: <http://www.coloradorockart.org/>

Yes the Colorado Rock Art Association is tentatively planning to have a conference in Craig, Colorado. We expect to have a day of papers and a day of field trips. More information to come.

San Luis Valley Rock Art Recording Project

July 2017 – exact dates to be determined

Details to come

The Project: We will be recording Rock Art in the in the Rio Grande gorge in the southern end of the San Luis Valley in Southern Colorado. The rock art panels include a variety of motifs, likely including both Archaic and more recent images. The project will take place in July 2017. The exact dates have not been determined. We will be asking folks to volunteer for at least 3 or 4 days. Volunteers can stay in the project base camp in Antonito or at a nearby motel. Food will be provided.

Project Leaders: Paleocultural Research Group. They have 20 years of experience leading volunteer archaeological projects. See their website for more information (www.paleocultural.org). This project will be held in conjunction with the PAAC annual survey. A professional crew chief will train and assist CRAA volunteers.

Conferences

2017

Conferences are a great way to learn more about archaeology, see wonderful archaeological sites and a great way to meet others who share your interest. Avocationalists are welcome at all of these conferences.

Colorado Council of Professional Archaeologists (CCPA)

March 10-12, 2017 in Grand Junction

Website: <http://coloradoarchaeologists.org/>

Sign up information should be available by the end of January.

A great conference to learn about the latest in Colorado Archaeology. They have special rates for Colorado Archaeological Society members. (All CRAA members belong to CAS.)

Colorado Rock Art Association (CRAA)

May 6-7, 2017 in Craig, Colorado

Website: <http://www.coloradorockart.org/>

Yes the Colorado Rock Art Association is tentatively planning to have a conference in Craig, Colorado. We expect to have a day of papers and a day of field trips. More information to come.

American Rock Art Research Association (ARARA) 2017 Conference

June 1-5, 2017 at Redmond, Oregon (near Bend)

Website: <http://www.arara.org/conference.html>

PLANS are underway for the ARARA 2017 Annual Conference to be held June 1-5. Redmond is just north of Bend, which is between the Willamette and Ochoco National Forests and is graced with the lovely Deschutes River. Jim Keyser is the area Chair, and he and his team have already met with many locals to plan for field trips. The field trip wish list has been drawn up with about 18 sites around Redmond and Bend. Sites include petroglyphs and pictographs in Columbia River Conventionalized and Columbia Plateau, Great Basin, North Oregon Rectilinear, and Yakima Polychrome styles. Our tentative field trips list includes Horsethief Lake, Cascadia Cave, Picture Gorge, Malheur Basin, Devils Pass, and Picture Rock Pass. The conference starts with two days of papers and is followed by field trips. A great way to keep up with Rock Art topics in the United States and North America.

Utah Rock Art Research Association

Fall 2017 – dates not announced on website

Website: <http://www.utahrockart.org/>

Papers and field trips on Utah Rock Art. Always a popular conference for Colorado Rock Art Members.

Colorado Archaeological Society (CAS) Annual Conference and Meeting

October 2017 at History Colorado in Denver. Exact dates not announced.

Website: <http://www.coloradoarchaeology.org/BULLETINBOARD/bulletinboard.htm>

All Colorado Rock Art members are also members of the Colorado Archaeological Society. This is a chance to hear a wide range of archaeological topics and to go on field trips.

For anyone interested in true long-term planning

20th International Rock Art Congress IFRAO 2018

Standing on the shoulders of giants / Sulle spalle dei giganti

VALCAMONICA Darfo Boario Terme (BS) Italia (Italy)

29 August - 2 September 2018

Website: http://www.cesp.it/web/Ifrao2018/IFRAO2018_eng.html

The congress will cover a range of topics relevant to rock art, archaeology, culture and society, from its first appearance to current forms. During five days, leading experts in the field, researchers along with young scholars and enthusiasts, will gather and present the latest results and studies on rock art, rupestrian archaeology and other relevant research fields on Palaeolithic and Post-palaeolithic art of all over the world. More than 30 sessions, workshops, key lectures, exhibitions, visits with live streaming of certain events are being planned. Excursions before and after the congress in Valcamonica and to others areas of the Alps are also being programmed.

Huerfano Butte, New Mexico, as the Model for Painted Mountains at Mesa Verde?

By Peter Faris



Huerfano Butte, New Mexico.
Photograph Eric Packard,
<http://listsofjohn.com>

On October 8, 2016, Dr. Steve Lekson gave the keynote speech at the Colorado Archaeological Society (CAS) 2016 Annual Meeting in Grand Junction. He discussed Chacoan influences in southern Colorado, particularly a communication channel between Far View House, Mesa Verde, and Chimney Rock Pueblo, Colorado, by means of fire beacons, with Huerfano Butte, New Mexico, and through it Chaco Canyon.



Far View House, Mesa Verde,
Colorado. www.nps.gov.

Huerfano Butte, New Mexico, has three peaks on top that were visible from Chimney Rock Pueblo and from Chaco Canyon. There was a fire box between the pinnacles of Chimney Rock and fire pits (or fire boxes) on Huerfano Butte that could be seen from each other. The Huerfano Butte fire pit would also have been visible from Chaco. These would have been ideal for long-distance messaging. There was also a view of Huerfano Butte from Far View House in Mesa

Verde and it also has a fire box so it must have been part of the network. These fire boxes were constructed in AD 1015-1020 (by tree ring dates). (Lekson 2009)



Chimney Rock, Archuleta County, CO.
Photograph: 2002, Peter Faris.

"Large fireboxes at Chimney Rock likely were used to signal Chacoans at the summit of Huerfano Mesa, a plateau hosting ancient fireboxes some 30 miles to the southeast of Chimney Rock and in sight of Chaco Canyon,' said Lekson. 'There was almost certainly line-of-sight communication between Chimney Rock, Huerfano Mesa and Chaco Canyon,' said Lekson. While there is no Chaco Great House on Huerfano Mesa, 'elaborate fireboxes and shrines suggest that somebody was there to pick up the phone and relay messages.'" (www.colorado.edu)



Chacoan great house at
Chimney Rock. Photograph
coloradoencyclopedia.org,
public domain.

In her book *Wild Inferno*, novelist Sandi Ault described the communication system in a story that she attributed to a storyteller from fictional Tanoah Pueblo, which she located near Taos Pueblo. "Time before time, the chiefs in the Center of the World could talk with fire and receive its knowledge and power. They used what fire told them to hold the moon unmoving in the sky."

"Far to the north, many priests lived and worked on Fire Mountain, learning the Way. From their round tower there, and from the ridge across the river, they made many studies, watching Grandmother Moon and Father Sun rise over the shoulders of Earth Mother. They measured with sticks and holes they made in the rock, and they counted days with lines of dots and brush marks, or with piles of pebbles. They built great night fires and used big, flat stones to shoot the light of the flames far, very far. They sent their wisdom on nights when the moon was hiding, so the fires could be seen in the sky. Three-days-walking to the south, on Red Mask Mesa, the fire tenders received the messages, then built blazes of their own, and - using the same kind of stones - sent the fire's light another three-days-walking to the south, to the Center of the World. The chiefs of what they now call Chaco Canyon would see the fires, read their messages, and the Way would be known."

"The People would gather at the temples, and the chiefs would say: On this night, I will tell the moon where to stand, and it will come to that place because I say it must! The People would watch and see."

"And when Moon obeyed, and came to the appointed place in the sky, the People knew that the chiefs were very powerful. The fires had bestowed their gifts." (Ault 2008:32)

Given that the Chacoan Phenomenon in the Four Corners Region is believed to have been one of influence and spiritual leadership throughout the region, the possibility that they could communicate over such vast distances would possibility assume a spiritual significance as well.



3 mountains painted in a kiva
at Eagle's Nest ruin, Ute Mountain
Ute Reservation, CO. Photograph
Peter Faris, 1981.

In June 1981 we were lucky enough to tour the portion of the Ute Mountain Ute Reservation south of Mesa Verde. This region has pretty much as many ruins as Mesa Verde proper, with the added bonus that they have not been cleaned up. Pot sherds, bones, tools, and cordage still litter the ground in this area. One ruin that particularly intrigued me is known as Eagle's Nest. In this building there is a painted kiva with three mountain peaks painted on the inside wall (and if you look carefully you can make out some of the white dots that outlined the peaks).



Eagle's Nest ruin, Ute Mountain
Ute Reservation, CO. Photograph
Peter Faris, 1981.

I have since been fascinated with what those three mountain peaks might represent. If Eagle's Nest could be seen as part of the communication network then perhaps the three peaks painted in the kiva at Eagle's Nest ruin on the Ute Mountain Ute Reservation south of Mesa Verde can be connected to the three peaks of Huerfano Butte in the minds of the people? Is there any way that Huerfano Mesa could be visible from Eagle's Nest ruin? Given the location of Eagle's Nest Ruin in a canyon wall shelter I am pretty sure it cannot have sight lines to Huerfano Mesa. Perhaps intervening locations with fire boxes could have transmitted messages on from Far View to Eagle's Nest or from Huerfano Mesa to Eagle's Nest. The problem here is that I have no knowledge of such fire boxes and I do not believe that such research has been done. It would take detailed survey work to attempt to discover lines of sight and fire boxes or beacons that would have been used.



Three painted mountains
outlined with white dots. Spruce
Tree House, Mesa Verde, CO.
Photograph Peter Faris, 2002.

There is certainly some significance to the three peaks at Mesa Verde. Spruce Tree House has a wall painting that also has three peaks outlined by white dots. This theme would seem to be more than just coincidence in decorative elements.

So, although we apparently have instances of possible communication between Chaco Canyon, Huerfano Mesa, Chimney Rock, and Far View House in Mesa Verde, the information available does not yet justify making an assumption that there is any connection between the three painted peaks in the kiva at Eagle's Nest Ruin, three painted peaks at Spruce Tree House, and the three peaks on Huerfano Mesa. Too bad too, it would have been such a neat solution. I guess I will just have to keep looking for the answer of what the three peaks represent. I will also be happy to hear your comments on this as well.

Peter Faris is a 30+ year member of the Colorado Archaeological Society, Founder and former President of the Colorado Rock Art Association, Member of the Arapahoe County Cultural Commission, President of Institute for Archeoesthetics. 2013 recipient of the Ivol Hagar Award for outstanding service to the Colorado Archaeological Society, and a 2013 Colorado Rock Art Association Chapter Achievement Award. Member of Archaeology and Historic Preservation Committee and also Programs Committee of History Colorado. Arapahoe County Cultural Council. He writes a regular blog on Rock Art at <http://rockartblog.blogspot.com>.

REFERENCES:

Ault, Sandi,
2008 Wild Inferno, Berkeley Prime Crime, New York.

<http://coloradoencyclopedia.org>.

<http://www.colorado.edu/today/2009/07/28/chaco-royalty-ordered-catered-food-colorados-chimney-rock-site-1000-years-ago>.

Lekson, Steve, PhD.,
2016 Latest Chaco Canyon Theories and Research, lecture to: Annual Meeting of the Colorado Archaeological Society, October 7, 2016, Grand Junction, Colorado.

Packard, Eric,
<http://listsofjohn.com>, image 3637306.

www.nps.gov.

Historic Preservation Fund

Update on Reauthorization

In communities throughout America, the Historic Preservation Fund (HPF) has helped to recognize, save, and protect America's historic places. Legislation creating the HPF was signed into law on September 28, 1976. The law provides for a relatively small portion of the royalties that energy companies pay for the right to drill for oil and natural gas on the federally owned Outer Continental Shelf (OCS) to be used to preserve the places that tell America's story. The HPF has been used to help preserve and protect iconic sites and objects as diverse as Emily Dickinson's home in Amherst, Massachusetts, to the bus on which Rosa Parks refused to give up her seat to the main street of Deadwood, South Dakota.

On November 14, 2016, the Colorado Rock Art Association (CRAA) sent members requests from Karen Kinnear, Colorado Archaeological Society President and from Holly Norton, State Archaeologist & Deputy State Historic Preservation Officer suggesting that CRAA members consider asking their Representatives support HPF reauthorization.

Holly Norton has sent us a status update on the reauthorization process from Ted Monoson, Director of Government Relations at the National Conference of State Historic Preservation Officers dated December 7, 2016. Ted Monoson writes "Yesterday, the House of Representatives passed H.R. 4680, the NPS Centennial Bill. The bill includes a provision reauthorizing the HPF for seven years. In order for the NPS Centennial Bill to become law, it also must be passed by the Senate and signed by the President. The Senate is expected to finish its work for this session and this Congress late this week or, more likely, early next week. We are working to get the Senate to pass the bill before the session ends. There are some obstacles to getting the Senate to act on the bill. None of those obstacles are related to the HPF reauthorization provision. We are doing what we can to deal with those obstacles."

Web Seminar Access

Do you have access to a web seminar application?

The Colorado Rock Art Association (CRAA) would love to try an online web seminar a time or two this winter. Would anyone have access to web seminar software that CRAA could use an evening or two? Ideally it would have the capacity for 50 or 100 attendees. We would be happy to reimburse any incremental costs.

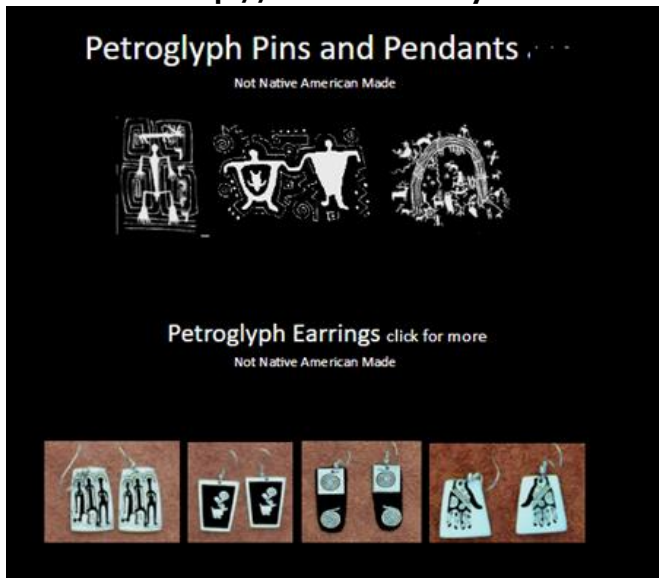
A web seminar would allow us to offer live lectures that CRAA members could view with any computing device. Viewers would be in the comfort of their own home. CRAA members could ask the lecturer questions. Everyone could see and hear the presentation with ease. There is no cost to the viewer.

Web Seminar software such as *Go to Meeting* or *WebX* would allow us to give a live on-line lecture on Rock Art. With CRAA being such a geographically disbursed group, it is hard to offer programs that most of our members can attend. CRAA could pay for the web seminar ourselves but with using it only one or two times, it is pricy.

If you have access to such software that we could use, please contact us at coloradorockartassociation@yahoo.com.

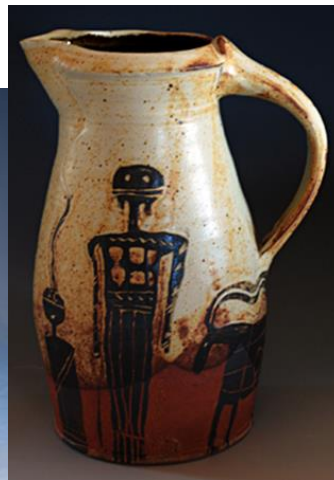
Ideas for Rock Art Inspired Gifts Pins, Pendants and Earrings

Website: <http://www.aliceseely.com>



Pottery and sculpture

Website: <http://blueglyphclayarts.com>



CRAA OFFICERS & BOARD MEMBERS

| | Phone | Email |
|--|--------------|---------------------------|
| Anne Robinson President | 720.334.2782 | annerco@yahoo.com |
| Joel Hurmence Vice President | 970.481.2124 | jhumence@hotmail.com |
| Bob Tipton Treasurer | 303.646.6281 | junkdocs@q.com |
| Bob Rushforth Secretary | 303.795.2837 | rrush4th@msn.com |
| Jo Morgan Board Member | 303.938.9208 | jomorgan07@yahoo.com |
| Barbara Potter Board Member | 719.576.3569 | bkpotter2003@yahoo.com |
| Jessy Re' Board Member | 719.588.4441 | sacredclownshop@gmail.com |
| Betsy Weitkamp Board Member & Education Chair | 303.722.1656 | elaw@q.com |
| Cheryl Ames Website | 303.940.2043 | cheryl_e_ames@msn.com |
| Keith Fessenden Membership | 303.907.5184 | khfessenden@gmail.com |
| Teresa Weedin CAS Representative | 303.366.7843 | weedin@comcast.net |

If you hear of any events or projects relating to rock art, please pass them along to us at coloradorockartassociation@yahoo.com. We will get the information out to CRAA members.