



MEGANMALDONADO

## In Memory of Hydroflask

---

This hydro flask was in Memory of Coach Bist. The client wanted a masculine typeface for his name and for the rest of the type to be clean and legible. After laying out the design in Corel Draw, I then laser engraved the hydro flask on a Trotec Speedy 300.

Material: Powdered Stainless Steel

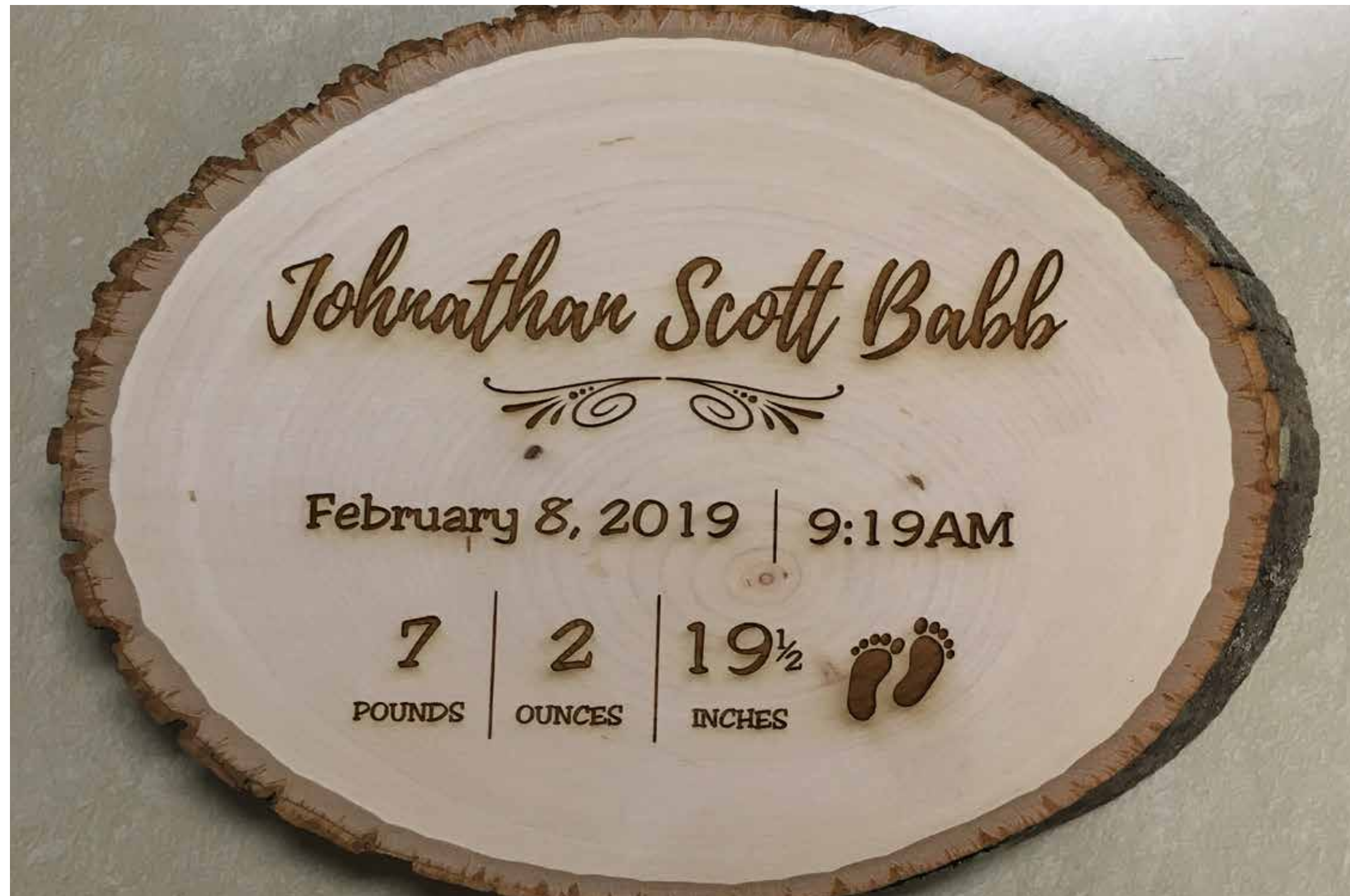


# Newborn Wood Slice Plaque

---

This personalized newborn name and information plaque was designed to be a fun and playful yet sophisticated and clean. This layout was designed in Corel Draw then taken over to the Trotec Speedy 300 to be laser engraved.

Material: Beechwood Slice

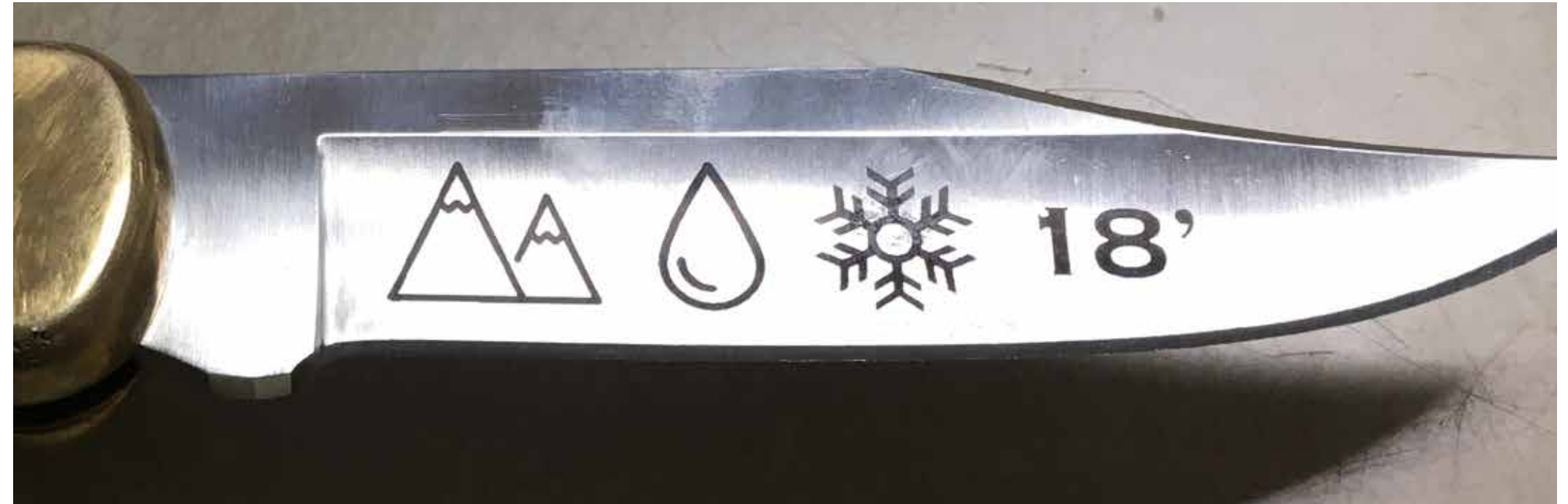


# Stainless Steel Knife

---

This pocket knife was a present for a friend's birthday. I chose an elegant and classic typeface for his name. On the other side of the blade I incorporated the year and three things he loves the most; mountains, rain and snow. I designed these icons in Corel Draw then used the Trotec Speedy 300 to laser engrave it.

Material: Stainless Steel

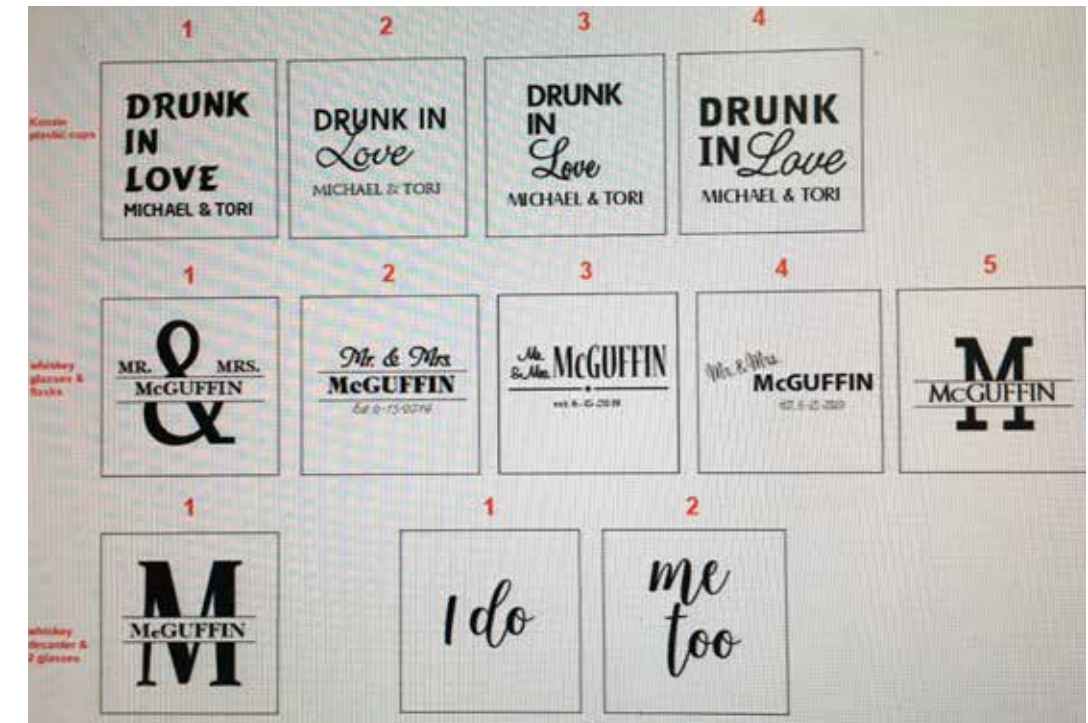


# McGuffin Wedding Logo/Flasks

---

This project consisted of creating multiple logos for a wedding. They decided to go with option five and we went back and fourth a couple of times with revisions to get to the final logo, finally including the wedding date and a change of typeface to the "M". These were all designed in Corel Draw and then lasered onto five flasks for all the groomsmen.

Material: Stainless Steel



## Retirement Plaque

---

I was able to go through the whole process on this project. From the beginning with talking to the client about her vision with a lookout tower, flag, and iconic tree. The client wanted something bold and strong, but also something a little feminine. I then designed the layout, the laser engraved the black brass with the Trotect Speedy 300 machine. The final touch was then attaching the brass plate to the walnut plaque. The client was very happy with how this retirement plaque turned out.

Material: Black Brass on a Walnut Plaque

