

MRP

SUPPORTS

Ordinary to Extraordinary Self-Leveling Technology



"eterno"

Adjustable & Fixed Pedestal Supports

SELF-LEVELING TECHNOLOGY

Adjustable Pedestal Supports

level uneven surfaces used in concrete, porcelain, wood tiles and decking applications

Automatic Self-Leveling Head

compensates up to a 5% gradient

Adjustment Key

allows adjustment without removing the tile

Fixed Supports

IPE Deck Tiles

Reduced Installation Time

800.828.8424

mrpsupports.com



SE SUPPORT



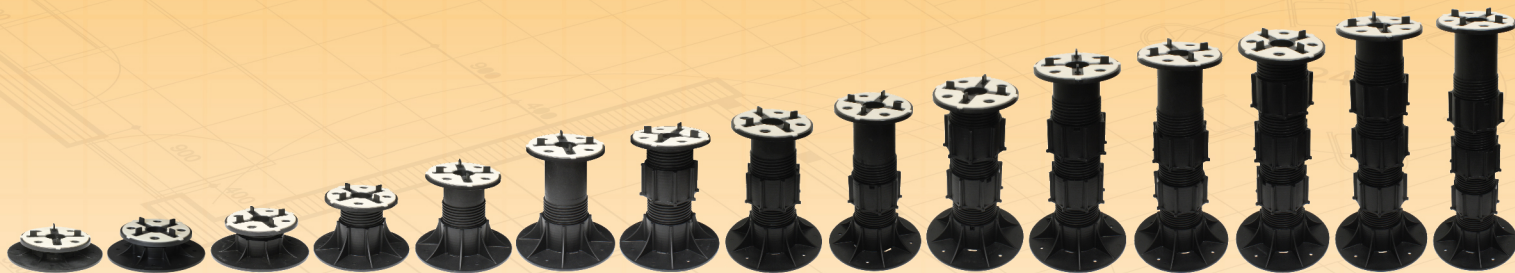
NM SUPPORT



SB SUPPORT

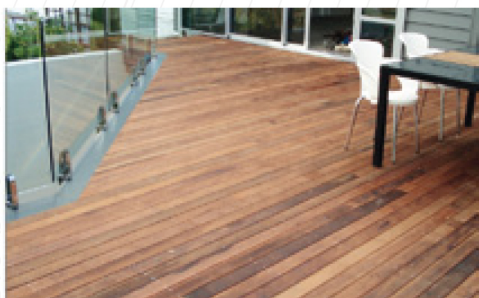
	SE SUPPORT	NM SUPPORT	SB SUPPORT
SELF LEVELING HEAD	✓		
FIXED HEAD	✓	✓	✓
ADJUSTABLE	✓	✓	✓
EXTENSION ELEMENT	✓	✓	SB3 & SB4 ONLY
ADJUSTMENT KEY	✓	✓	
LOCKING IPE PINS	✓	✓	
RECYCLABLE (LEED)	✓	✓	✓
LOADING CAPACITY	2205 LBS. (1000 KG)	3300 LBS. (1500 KG)	1320 LBS. (600 KG)
HEIGHT RANGE	1.125" - 21.75" (28 MM - 550 MM) * HIGHER WITH EXTENSIONS	1" - 10.63" (25 MM - 270 MM) * HIGHER WITH EXTENSIONS	1.06" - 17" (27 MM - 430 MM) * REQUIRES EXTENSIONS

ORDINARY TO EXTRAORDINARY *self-leveling technology*



Eterno Adjustable Pedestal Supports

MRP Supports (Eterno) pedestals are designed to support Concrete Pavers, Porcelain Pavers, Wood Deck Tiles and Wood Decking. Our pedestal supports are set on any waterproofing membrane and any other surface to be paved. After an initial adjustment the leveling of the pedestal is completed with extreme precision by using our unique **Adjustment Key** even when all pavers are already placed. Each pedestal is supplied with a Base, Threaded Screw and Head. Our standard **Self-Leveling Head** automatically compensates any gradient up to 5%, which reduces time spent shimming to create a perfectly level surface. Our Self-Leveling Head is also supplied with a bi-component soft rubber material that offers anti-noise and anti-slip. Optional add on components are available for Fixed Head and IPE Deck Tile applications. Our Wood Joist Head is also available for any wood joist applications. Our Supports are 100% Recyclable (LEED Approved), resistance to temperature from -22°F to + 248°F (-30°C - + 120 °C), resistance to acid and UV Stable. Loading capacity of each support is more than 2,205 lbs. and the supporting base is 49.6 sq inches (320 cm²).



ULTIMATE solution to underlying issues of pavers

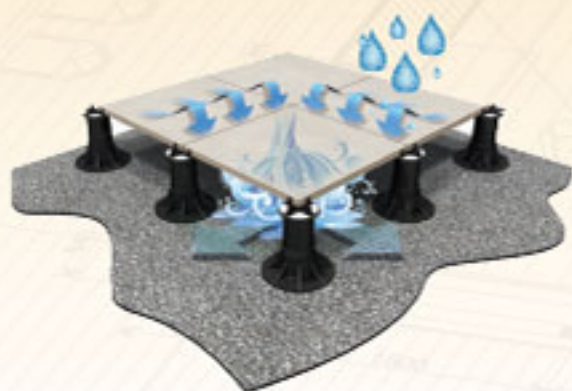
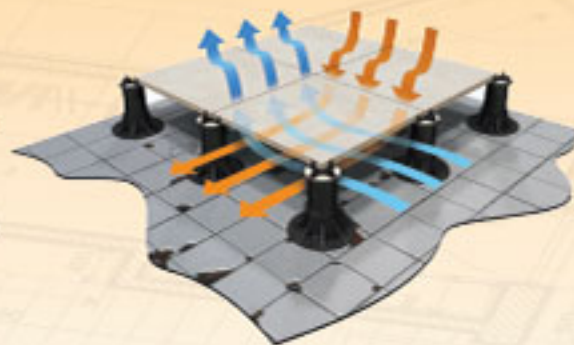


Excellent for Hiding Pipes & Equipment

The void between the paving and membrane can be used to accommodate pipes and services, but retain ease of access.

Better Thermal Insulation

The void between the paving and membrane encourages constant air circulation, extending the life of the waterproofing and improving heat insulation and protecting the surface from UV degradation.



Quick Water Drainage

The small gap between one slab and another allows water to discharge on to the laying surface and facilitate rapid drainage.

Always a Flat Paving & Easily Accessible

With the Pedestal system, you can easily compensate for slight unevenness, irregularities and any gradients on the laying surface, creating a perfectly stable and flat paved surface. The pedestal design allows for the underlying surface and any installed services to be accessed and maintained without damaging the paving.

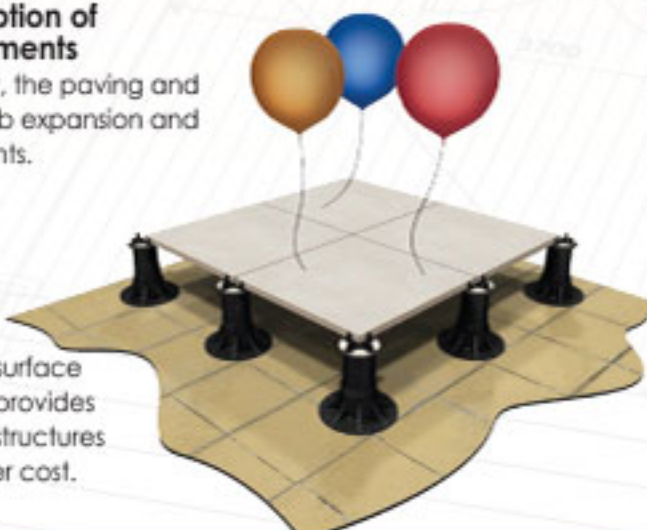


Excellent Absorption of Structural Movements

Being independent, the paving and supports can absorb expansion and structural movements.

Significantly Less Weight

With no requirement for special surface preparation the floating system provides a light weight solution, allowing structures to be built at a substantially lower cost.



THREE-IN-ONE-head

All in One | Self-Leveling Head | Fixed Head | IPE Wood Deck Tiles

FEATURES:

- 1** 6" Diameter **Self-Leveling Head**
Larger Head Surface Area
- 2** Bi-Material Head that
Offers Anti-Noise & Anti-Slip
- 3** Pre-Cut Tab for
Easy Removal (If Needed)
- 4** Locking Piece for **Fixed Head** Applications
For Light Tiles (Optional Add On)
- 5** Pins for **IPE Wood Deck Tiles**
(Optional Add On)



ETERNO adjustable pedestal supports

Levels Un-Even Surfaces

Concrete Pavers | Porcelain Pavers | Wood Deck Tiles | Wood Decking



1 THE "KEY" IS THE KEY TO YOUR SUCCESS

Our unique "Adjustment Key" allows you to level and adjust our Eterno Pedestal Supports WITHOUT removing the paver. This unique feature saves labor costs and reduces possible injuries from lifting the concrete paver.



2 NEW SELF-LEVELING BI-MATERIAL HEAD

Our unique self-leveling head allows the head to automatically compensate any gradient up to 5% that reduces time needed to shim and create a perfectly flat surface.



3 BLOCK SYSTEM

Block system indicates to installer when unit has safely reached its maximum height adjustment. A cut out is also part of this system that allows the installer to push in safety tab that allows components to be released if necessary.



4 LOCKING COUPLING

Allows head to be locked into the threaded screw.



5 BASE PRE-CUT LINES

Base bottom with pre-cut lines for easy and precise cuts when needed for corner placement situations.

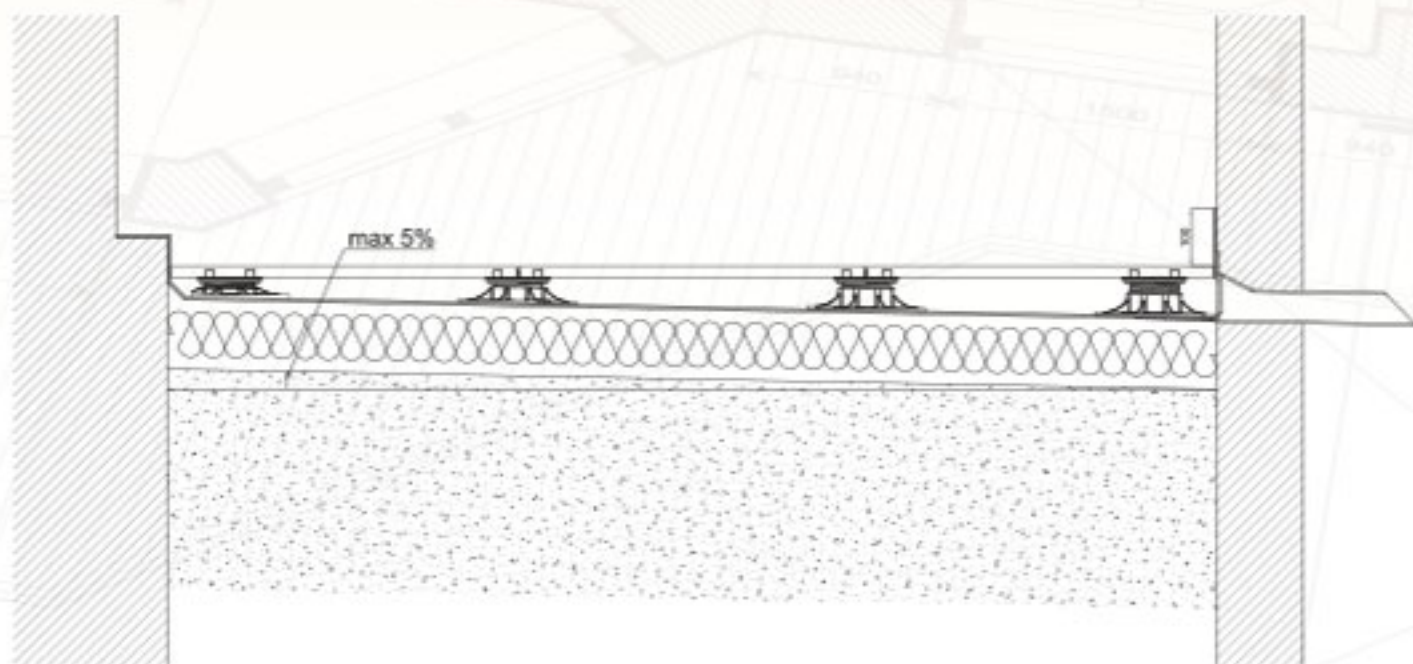
WHAT ARE INSTALLERS SAYING?

"The Eterno Adjustable Pedestal Support saves us 30 to 40 % in installation labor because of the UNIQUE FEATURES that no other company has!"

FEATURES	ANP ETERNO SUPPORTS	COMPETITORS
#1 ADJUSTMENT KEY	Levels Support without removing paver	N/A
#2 SELF-LEVELING HEAD	Automatically Compensates up to a 5% Gradient & Bi-Material Head	N/A
#3 BLOCK SYSTEM	Safety Height Tabs	N/A
#4 LOCKING COUPLING	Coupling locks into head	N/A
#5 BASE	Pre-Cut Base for Corner Applications	N/A
#6 SCREW	Different Screw Heights	Some
#7 EXTENSION	Extension for higher requirements	Some
#8 WATER DRAINAGE HOLES	No Ponding Water	N/A
#9 PRE-CUT TABS	Easy removal of Tabs when needed	Some

THE "KEY" is the key to your success

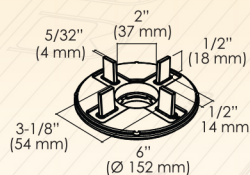
Our Unique "Adjustment Key" allows you to level and adjust our Eterno paver supports **WITHOUT** removing the paver. This saves labor costs and reduces possible injuries from lifting the concrete paver.



ETERNO adjustable pedestal support sizes

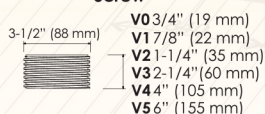


Plus 6" Self-Leveling Head with 5/32" (4 mm) thick tabs.
*Stocked Heads

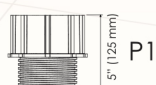


Small 4" Diameter Head
Available as a Special Order

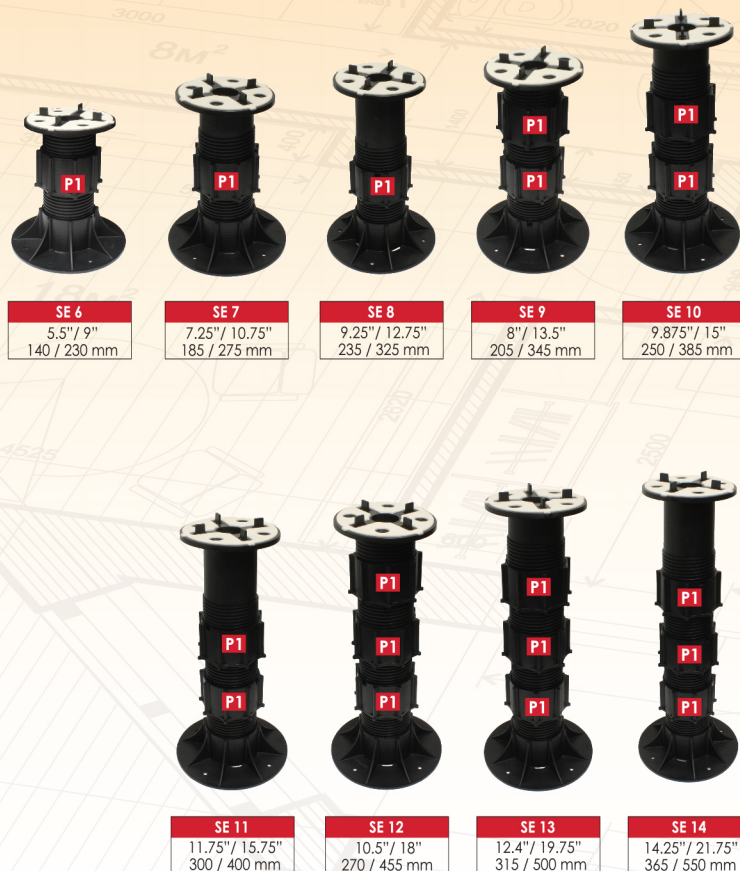
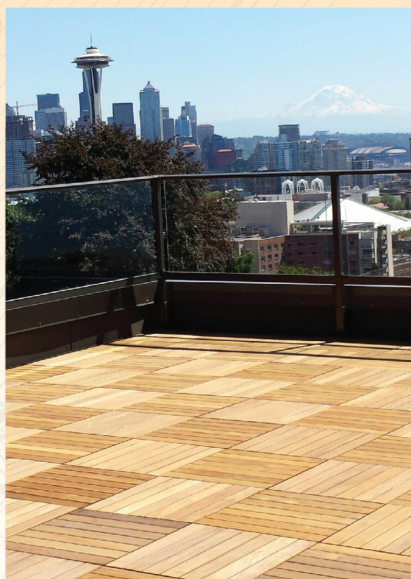
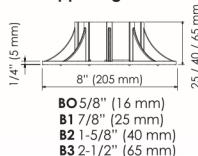
Screw



Extension



Supporting Base



COMPONENTS TABLE - SE 6-SE 14

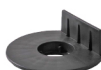
SE6 = SE3 + 1xP1	SE9 = SE3 + 2xP1	SE12 = SE3 + 3xP1
SE7 = SE4 + 1xP1	SE10 = SE4 + 2xP1	SE13 = SE4 + 3xP1
SE8 = SE5 + 1xP1	SE11 = SE5 + 2xP1	SE14 = SE5 + 3xP1



Optional Locking Piece for Fixed Head - Light Tile Applications



Optional Pins for IPE Tile Applications



Wood Joist Head for Wood Joist Applications



LGH2 1/16" (2mm) Leveling Shim



LGH3 1/8" (3mm) Leveling Shim



LH3 1/8" (3mm) Leveling Shim

Note: It is recommended to place additional supports under pavers with heavy objects, such as Planters & Hot Tubs, for extra support!



EH 12



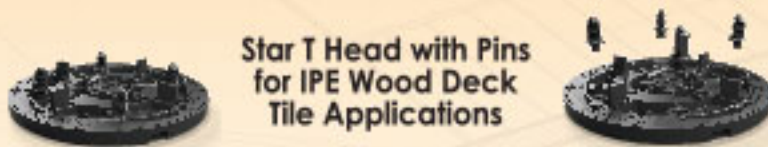
EH 15



EH 20

STAR T and B

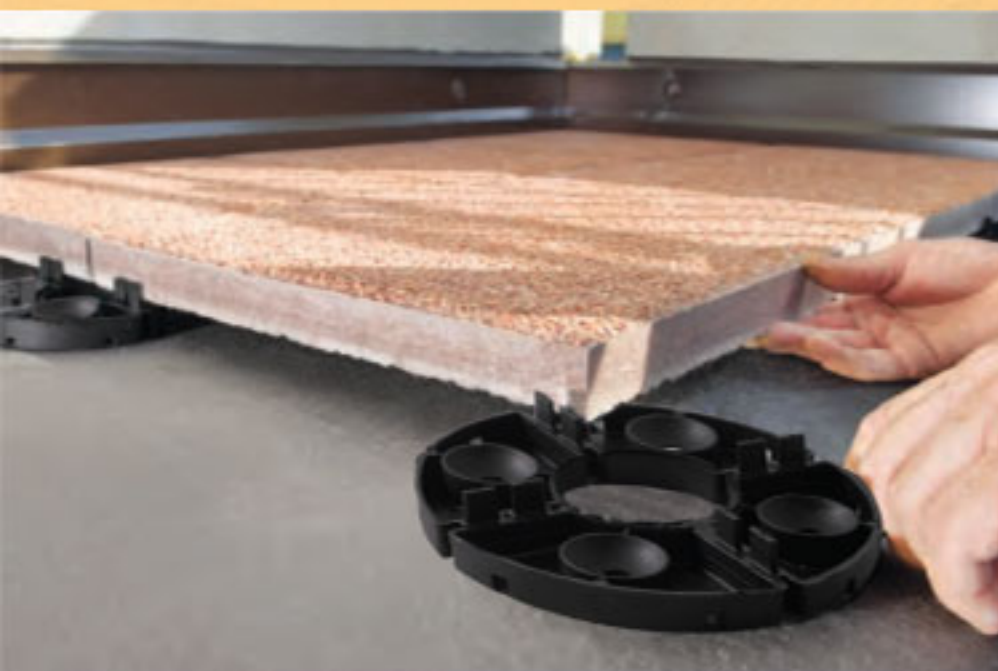
The Star T is adjustable from 3/8" – 9/16" (8-30mm) and is compatible with any type of Concrete, Porcelain, Ceramic or composite material floor of any size and weight. The adjustment of the Star T using our unique Adjustment Tool allows you to make precise adjustments when needed. The Star B is an extension that enables heights to reach the SE0 and NM1 Adjustable Supports. The Star B is placed under the Star T that increases the height of 3/16" (5mm). The maximum number of Star B's to be used is a quantity of three. Our IPE Pins are also available to be used with the Star T when using IPE Wood Deck Tiles that are supplied with pre-drilled holes underneath the IPE.



Star T Head with Pins
for IPE Wood Deck
Tile Applications



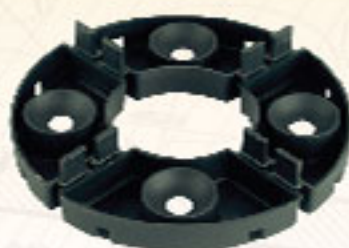
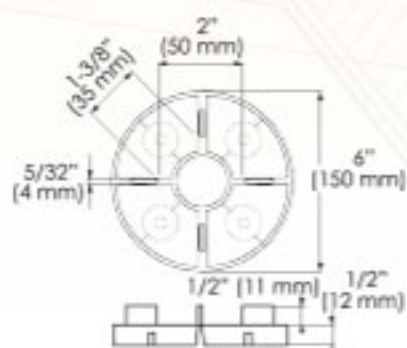
THE "EH" RANGE *fixed height paver support*



The fixed height supports "EH" are available in 1/2" (12mm), 5/8" (15mm) and 3/4" (20mm) heights. Tabs supplied are 5/32" (4mm) and our LH3 leveling shim is also available in 1/8" (3mm) thick.



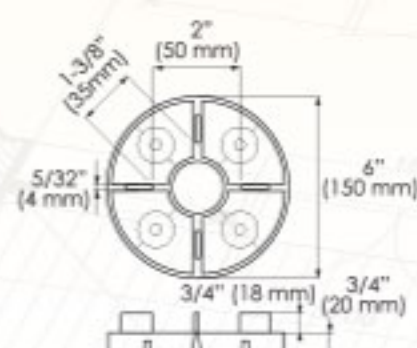
EH 12



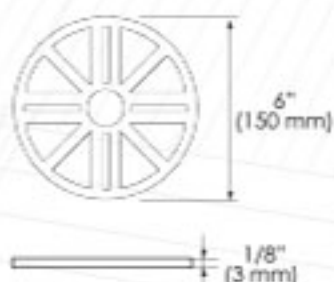
EH 15



EH 20



LH3



EH FIXED rubber support

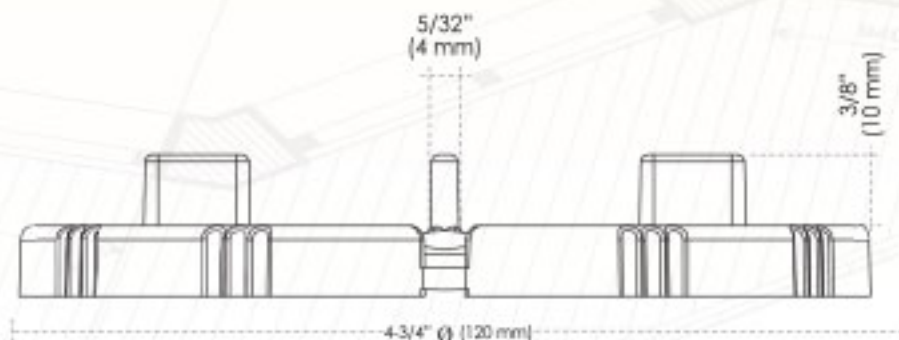
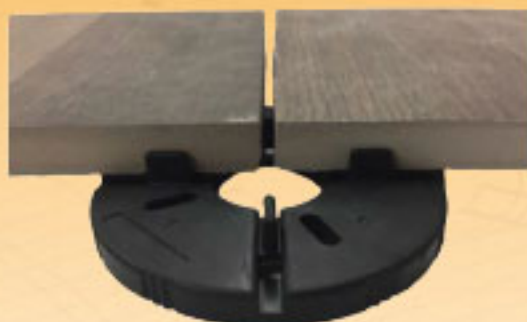
EH fixed rubber supports are supports made of SBS recyclable rubber. The material used has a particularly high resistance to temperature changes, acid solutions and atmospheric agents that make it mostly suitable for outdoor use. They are subjected to great crush performance, thanks to its elastic power, it returns to its original shape. It has a high sound absorbing property and its composition is formulated specifically to match the high performance of the "white head" present in the NM and SE models belonging to the MRP Pedestal line.

EH fixed rubber supports are a fixed support that are available in two sizes - 4-3/4" (121mm) OD x 3/8" (10mm) high and 4-3/4" (121mm) OD x 1/4" (6mm) high. Both can be used separately or superimposed, until they reach the required height.

Because of its raw material and its compact size, EH fixed rubber supports become a great ally in the construction field and in architecture; ensuring high speed during installation procedures, better sound insulation and granting a good floor finishing results. It can raise any type of floor finish (stone, ceramic, cement, composite material, etc.) of any size and weight. These supports can be used whole, half or divided into quarter sections.

The tab of the Pedestals are 3/8" (10 mm) high and 5/32" (4 mm) thick as standard stock.

On request and SPECIAL ORDER, the tabs are also available with the required thickness to be used for 1/16" (2mm) and 1/8" (3mm) joints .

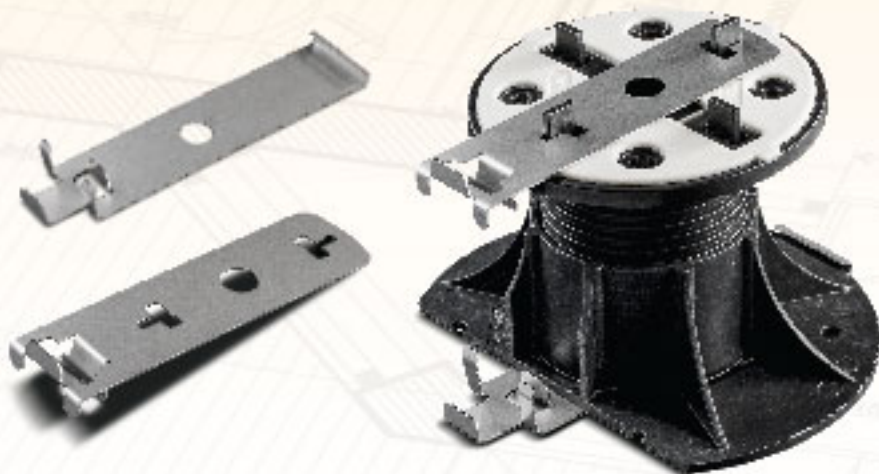
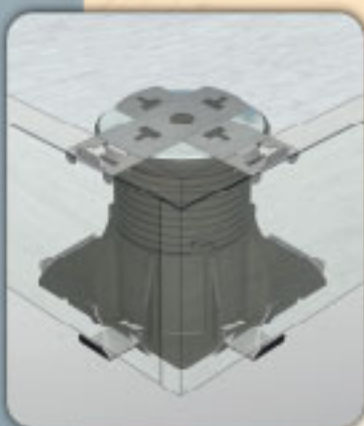


Rubber Fixed Support are also available with Locking Pins to be used with our IPE Wood Deck Tiles Rubber Support is 5-1/4" (133mm) OD x 1/4" (6mm) tall. Tab height is 5/8" (16mm) x 5/32" (4mm) thick.

Also available without locking pins.

CLIPS for vertical and horizontal closure

Our clips are designed to solve a problem on how to fill in the gap around the edge when no perimeter wall is present. This solution is used with Porcelain Tiles and represents an innovative, easy and elegant way to eliminate gaps around raised floors. The system consists of two special stainless-steel clips for positioning over head and under the base of the MRP Supports. It creates a firm setting capable of gripping the section of the floor to fill the gap. The use of our floor edge clip effectively prevents horizontal movement of floor slabs. This system is also possible to create steps.



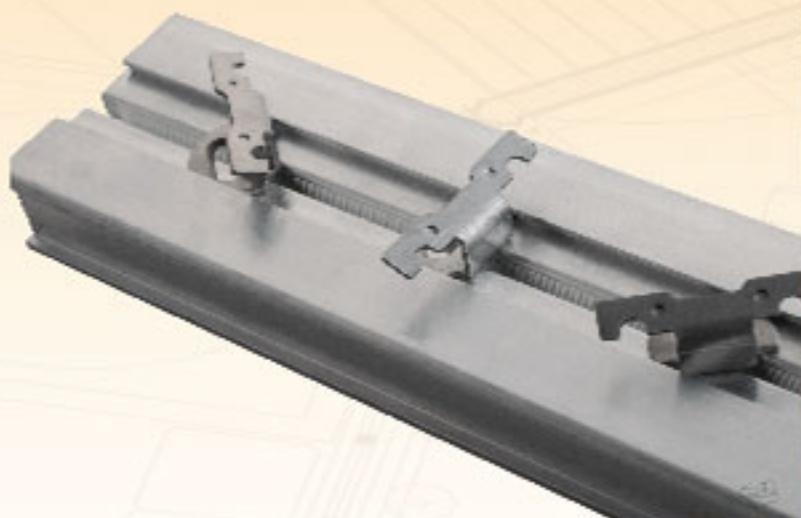
SLAB EDGE perimeter spacer

Designed to avoid contact between the slabs of outdoor raised floors and outside walls. The Slab Edge Perimeter spacer is made of stainless steel and incorporates a damper to absorb expansion and guarantees a secure grip, the use of these clips ensures a stable floor surface with a straight and elegant perimeter.



ALUMINUM *joists*

Aluminum joists are an option as a substrate for an elevated system. Our special aluminum joist head locks the aluminum joist to the head. Aluminum tabs anchor the decking in a simple and reliable way for the installer. Can be used with wood and ceramic decking applications.



NM SERIES *economical alternative with adjustability*

The Eterno NM 'Maxi' range of pedestals from MRP Supports is the very definition of strength and reliability. This range of adjustable pedestals features a cost saving 6" Diameter Fixed Head (rather than the self leveling head on the SE range of pedestals) while retaining classic Eterno pedestal features – complete adjustable height control before and after installation, anti-slip, noise reducing rubber head with inbuilt spacer tabs and strong, UV resistant, polypropylene components.

When installed on sloping surfaces, either shims or our Slope Compensator ensure a level support surface. The Slope compensator compensates from 0 – 1 %.

Suited for any self-supporting outdoor paving system, the NM 'Maxi' Series is an elegant, cost effective solution to your elevated decking needs.

Our Unique Adjustment Tool allows the installer to precisely level the pavers after installation without having to lift or remove any pavers. You simply insert the tool from above into a slot in the pedestal head via the gap between the pavers and turn it clockwise or anticlockwise to adjust the height.



Advantages

- Adjustable height from 1" – 10.63" (25-270mm)
- Adjusting the height with our exclusive adjustment key
- 320 cm² smooth base support
- Recyclable
- Resistance to temperatures between -40°– 248°F (-40° – 120°C)
- Resistance to acids and ultraviolet deterioration
- Suitable to any self-supporting outdoor paving system
- Head with noise-reducing and anti-slip rubber
- Easy to remove tabs
- Load tests available
- Compatible with "Twist" Slope compensator (0 – 1 %)
- Loading capacity 3300 lbs.



NM 1
1" - 1.57"
(25-40mm)



NM 2
1.57" - 2.75"
(40-70mm)



NM 3
2.34" - 3.93"
(60-100mm)



NM 4
3.54" - 6.30"
(90-160mm)



NM 5
5.90" - 10.63"
(150-270mm)



P NM
5"
(125mm)



LGH2 - LGH3
1/16" - 1/8"
(2-3mm)

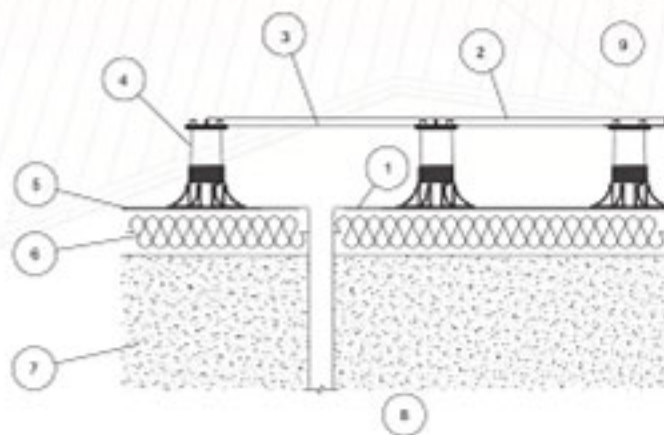
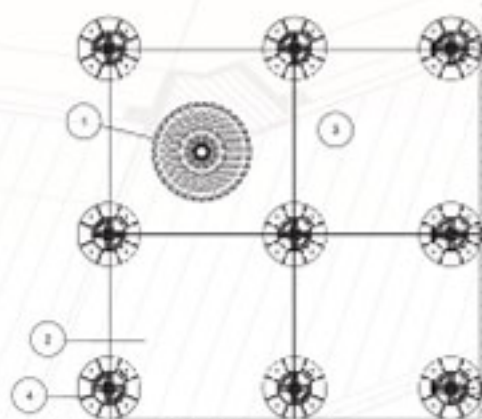


**Slope
Compensator**

INSTALLATION of concrete and porcelain pavers

Concrete or Porcelain pavers should be installed using exclusive self-leveling, bi-component head that allows automatic compensation of the imperfections and the slope of the substrate. Our EH fixed supports are also available for heights less than 1.125".

WARNING: Verify with paver manufacturer that paver meets or exceeds local codes.



DESCRIPTION

1 ROOF DRAIN • 2 SLAB • 3 LEAF-GUARD • 4 ADJUSTABLE PAVING SUPPORT "ETERNO"
5 WATERPROOFING MEMBRANE • 6 THERMAL ISOLATION • 7 CONCRETE SLAB • 8 PIPES

INSTALLATION of *light pavers*

Light pavers require the use of our Self-Leveling Head with Locking Fixed Piece. This allows the head to be fixed, as the Self-Leveling Head is not recommended due the light weight of the tile. Installing our IPE Wood Deck Tiles also require our Four Pins that allow the tile to lock into our head. Our EH Fixed supports are also available for heights less than 1.125".

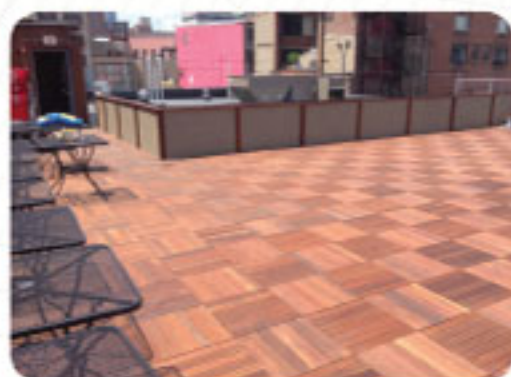
WARNING: Verify with paver manufacturer that paver meets or exceeds local codes



Optional Locking Piece for
Fixed Head Applications



Optional, Pins for IPE
Deck Tile Applications



INSTALLATION of joists and planks

Our Pedestal Supports can be used for all types of substructure joists including wood joists. For this application our standard SE support is used with our exclusive self-leveling wood joist head that is supplied with screw slots to secure the wood joist to our head.

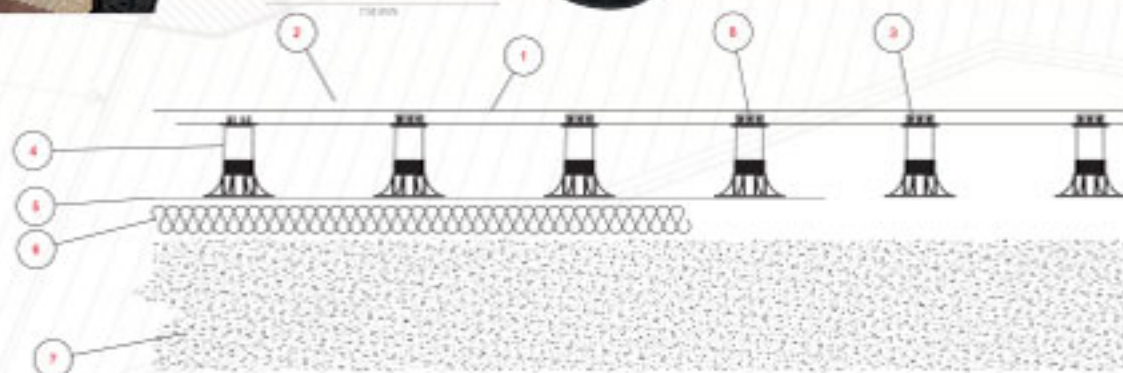
WARNING: Check the load resistance of both the joist and the board selected to decide the proper distance to be kept between two supports and between two joists.

ATTENTION: The distance between the paving supports depends on the type of joist chosen.



In the SE pedestal range, the great news is, the universal head, for all types of wood joists existing on the market, is equipped with stops that block the rotation of the head **2** in order to adjust the height of the support **3**. The new SE self-leveling head for wood joists **1** is the only self-leveling head **in the world**, which fits all kinds of substructure joists.

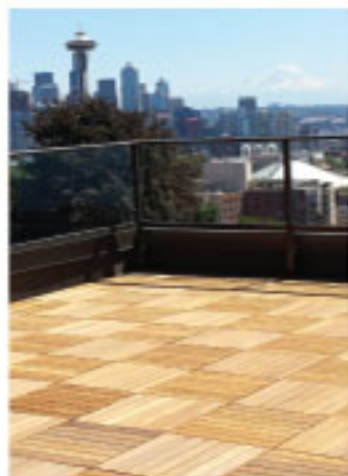
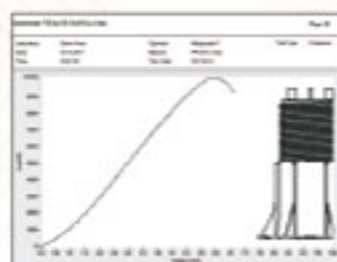
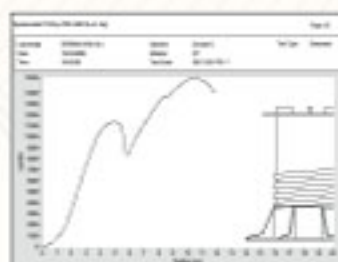
Star T Head for Wood Joist Applications



DESCRIPTION [**1** WOOD JOIST • **2** WOOD DECKING • **3** SCREW • **4** ADJUSTABLE PAVING SUPPORT "ETERNO" • **5** WATERPROOFING MEMBRANE • **6** THERMAL ISOLATION • **7** CONCRETE SLAB • **8** SELF-LEVELING HEAD

HIGHEST QUALITY, reliability & security | SOFTWARE for pedestals layout

Our number one priority is to ensure the highest quality, reliability and security. This is achieved in our modern Research and Development Laboratories where we submit raw materials and finished products for specific tests and controls to ensure all of our products conform to the highest standards and allow us to achieve sustainable improvement. In addition to ISO 9001/2008, the SA 8000 certification also recognizes ethical, policy-oriented social rights throughout the whole supply chain.



Part of our commitment to customer service is our new Pedestal Software. A CAD program that allows easy, simple and precise calculations not only for the number and type of paving supports needed, but also the total area size, number of full and cut tiles and much more!



TAKEOFFS

Part of our commitments to customer service is our new Pedestal software. A CAD program that allows easy, simple and precise calculations not only for the number and type of paving supports needed, but also the total area size, number of full and cut tiles and much more!

DISCLAIMER: TAKEOFF IS FOR ESTIMATING ONLY, IT IS NOT A CONSTRUCTION DOCUMENT.
PLEASE NOTE IF ALL INFORMATION IS NOT PROVIDED A TAKEOFF WILL NOT BE COMPLETED.

THE BELOW INFORMATION IS REQUIRED TO COMPLETE AN ACCURATE TAKEOFF
PLEASE SUBMIT DRAWINGS AS A PDF, DWG OR HAND DRAWING

Job Name: _____ Start Date: _____

1. Perimeter of the area that will be paved (highlighted on drawing, including dimensions)
2. Areas that are to be executed (not paved) (XXX these areas)
3. Drainage Points (labeled on drawing)
4. Smallest starting pedestal height in INCHES.
5. Slope of area being paved (ex. 1/4" per foot):
6. Paver Type (Circle One)

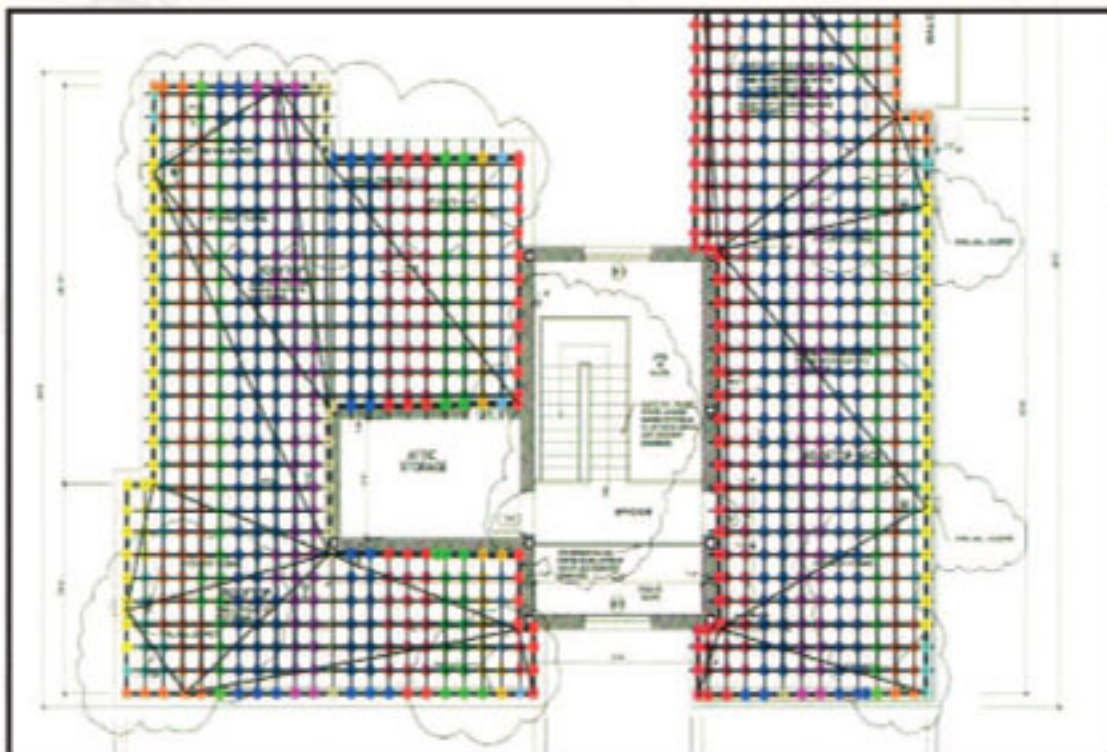
Concrete

Wood Tile

Wood Decking

Porcelain Tile

Paver Dimensions - L x W x H (in inches)





**The industry leader
for features and quality.**



MRP

SUPPORTS

800.828.8424
mrpsupports.com

3310 N. Benzing Road
Orchard Park, NY 14127-1538

MRP

SUPPORTS

Ordinary to Extraordinary
Self-Leveling Technology

A *Simple*
way to build a solid
wood raised deck over sloping
or uneven exterior surfaces.



IPE Wood Deck Tiles



WHY IPE?

IPE structural wood deck tiles offer a simple way to build a solid wood raised deck over sloping or uneven exterior surfaces including rooftops, courtyards, terraces, pool decks, etc. for both residential and commercial applications. These tiles are specifically designed for use with fixed height or adjustable height pedestals, eliminating the need for support bearers or other expensive supporting structures.

These 24" x 24" (nom.) prefabricated panels are constructed of 3/4" IPE wood slats screwed to three solid wood support battens with stainless steel screws. This results in a tile with exceptional strength, durability and resistance to flexing.

We offer the option of tiles with IPE wood sourced either from Bolivia under government forestry management practices or from Peru produced under FSC Chain of Custody (certification details can be supplied on request).

Although IPE wood is widely recognized as having Class A fire rating, in certain regions (such as NYC) the use of IPE wood for elevated decks on rooftops is either no longer permitted or is restricted. In such locations, to comply with any regulations for non-combustible roof decking, we offer an alternative solution of porcelain pavers with simulated wood designs, which are completely fireproof, stain resistant, scratch resistant and fade resistant.

WHY IPE?

Our structural wood tiles are exclusively constructed from IPE wood, not just because IPE is one of the most durable, dense and hard wood species commercially available, but because of its dimensional stability across a broad range of climatic conditions and resistance to twisting and warping. The outstanding properties of IPE include:

- High resistance to termites, decay and mold
- Very hard and dense
- Wear resistant and scuff resistant
- Class A fire rating
- High bending and shearing strength
- High resistance to warping and twisting
- Weathers without splintering
- Lower maintenance than softer and less dense species



INSTALLATION

ON PEDESTALS

Structural wood tiles can be easily installed over sloping or uneven substrates using adjustable height pedestals placed under each corner of the tiles. Structural wood tiles are primarily designed as an alternative to more time consuming and expensive installations with straight run deck planks laid over wood bearers. The pedestal system greatly simplifies installation and resolves problems where no 'permanent' structures are permitted or where there are concerns that building materials may damage waterproof membranes.

The installation procedure for structural wood tiles is basically similar to installation of Concrete and porcelain pavers on pedestal systems, however our wood tiles are supplied with a pre-drilled hole in each corner underneath enabling our PINS to be attached to the IPE wood deck tile. These PINS hold down the corner of the pedestals to "lock down" the tiles onto the pedestal, ensuring a safe, secure and level surface. Because these are lite tiles we also recommend that our LOCKING PIECE is also used. This allows our Self LEVELING Head to be locked as a Fixed Head.

If any tiles need to be cut, it is very important that the structural integrity of the tiles is maintained. This may require relocating one (or two) of the support battens and re-attaching these to the slats from the underside of the tile. It may also be necessary to drill and countersink additional holes when re-inserting screws.

It is also important that an adequate number of pedestals are used around the perimeter of the paved area, and that the tiles are restrained around the perimeter by a low wall or some other restraining structure to prevent the tiles from moving.

ON-GRADE

If installing solid wood tiles over a firm substrate such as concrete, they should not be laid directly on the substrate for the following reasons:

- If wood is allowed to remain in contact with water for extended periods, some swelling of the bearers may occur and possibly temporary warping or twisting of the wood slats.
- Unless the tiles are all laid parallel to the slope (and not in an alternating checkerboard pattern), the bearers on the underside will prevent water flowing freely underneath the tiles.
- If the substrate is slightly uneven, the tiles could "rock" on the surface, or one or more of the edges may protrude upwards, creating a tripping hazard

For best results, we recommend laying the tiles on our Adjustable Star T Supports w/ Pins or our Fixed – EH12 – ½" or EH20 – ¾" tall. These are also stackable that are placed under each corner of the tiles.

POST INSTALLATION CARE

As supplied, IPE structural wood tiles do not have any factory applied oil coating but are waxed at the ends of the slats only. We strongly recommend that tiles are coated with a good quality decking oil as soon as practical after installation to maintain the attractive wood color as long as possible and reduce the rate at which the wood will weather naturally to a silvery grey color. Also because the wax coating on the slat ends will tend to 'bleed' over time, if the tiles are not coated with a decking oil, it can often give the appearance that the ends of the wood slats have been saturated with water.



TILE SPECIFICATIONS

TILE SPECIFICATIONS	
Property	Specification
Standard Tile Size	23 7/8" x 23 7/8" (606 x 606mm) – tile dimensions
	24" x 24" – covered area using 1/4" spacers
Custom Sizes	48" x 24" size available on request
	(other sizes can be produced to order)
Tile Height	3/4" (19mm) *variable heights could be supplied
Wood Thickness	3/4" (19mm)
Slats per Tile	8 (std.)
Width of Slats	2-51/64" (71mm)
Slat Spacing	3/16" approx.
Ends & Sides Finish	Straight Edge
Tile Weight	23.5lb.
Surface Finish	Ends waxed with paraffin.
	Slats with machined finish – not coated with oil
IPE WOOD PROPERTIES	
Property	Specification
Common Name	IPE
Botanical Name	Tabebuia sp.
Color	Typically reddish brown color, but can vary from olive brown to blackish, often with lighter or darker striping
Grain	Fine to medium texture, grain always interlocked, sometimes very highly oily looking
Density @ 12% Moisture	1050-1180 kg/m3
Durability	Class 1 (min. 25 years life)
Fire Rating	Class A
Hardness (Janka)	3680 (very hard)
Resistance to Decay & Insect Attack	Resistant to attack by decay, fungi and termites
	Not resistant to marine borers
Modulus of Rupture	170 MPa
Modulus of Elasticity	21 GPa
Maximum Crushing Strength	94 MPa
Shrinkage	7% tangential, 6% radial
	1.2 tangential/radial shrinkage ratio

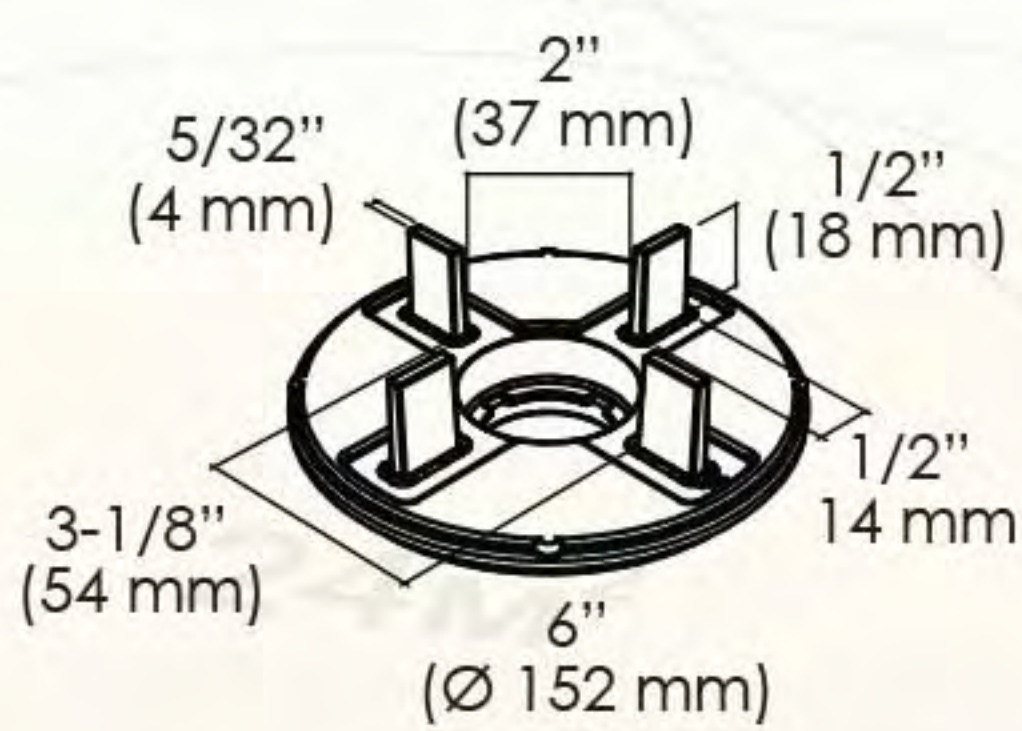
Tile Specifications are subject to change without notice.



ADJUSTABLE & FIXED PEDESTAL SUPPORTS

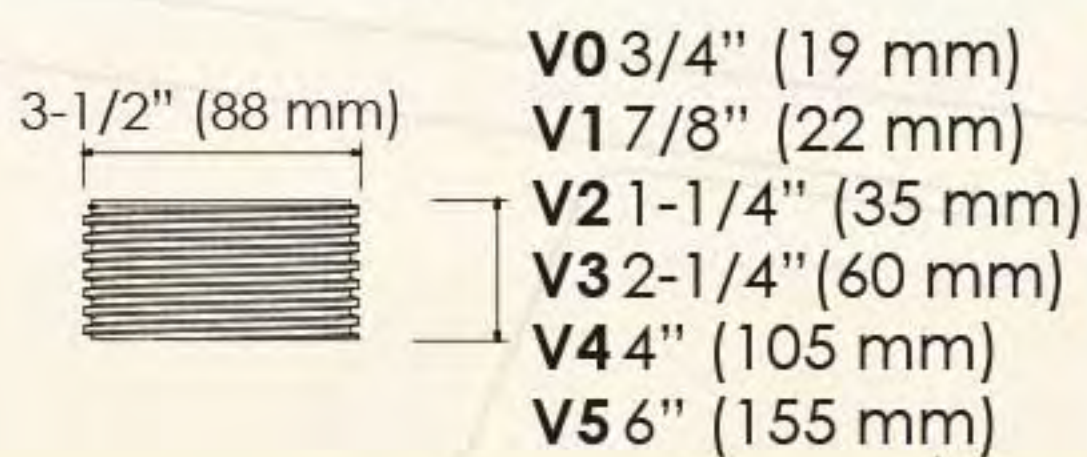


Plus 6" Self-Leveling Head with
5/32" (4 mm) thick tabs.
*Stocked Heads

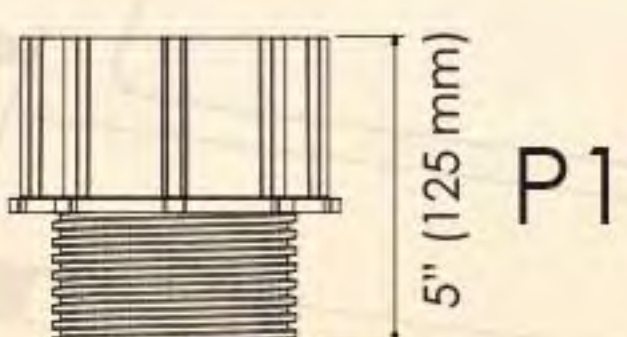


Small 4" Diameter Head
Available as a Special Order

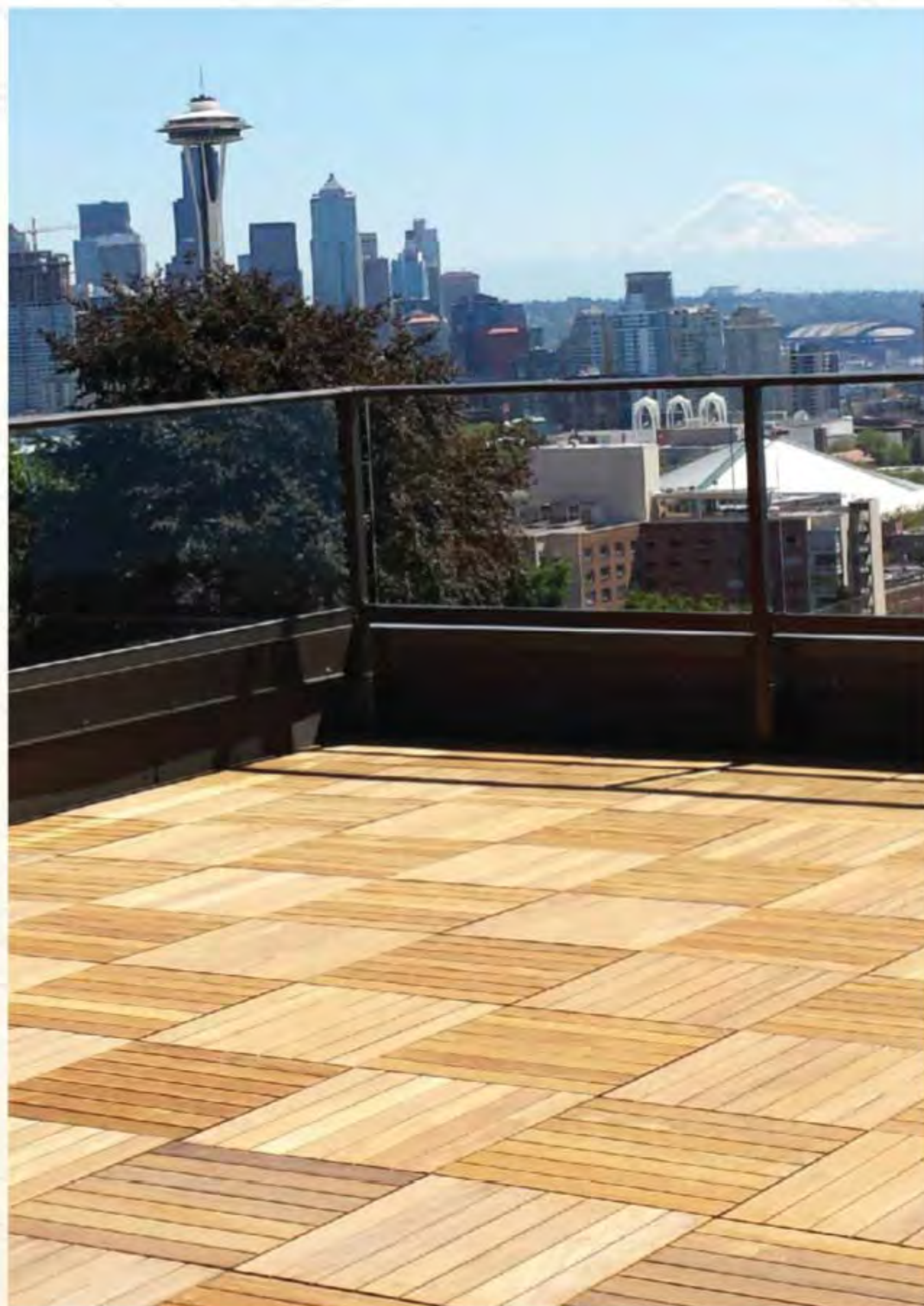
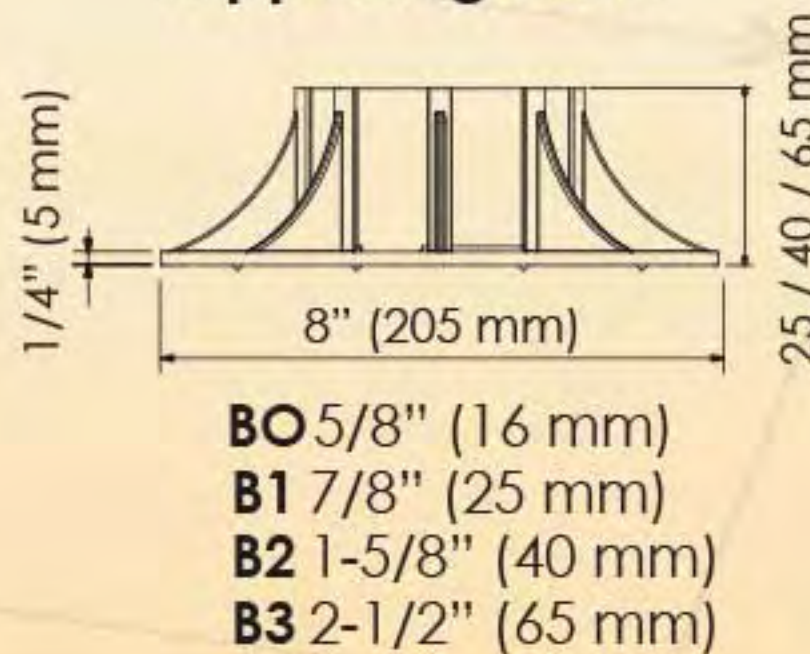
Screw



Extension



Supporting Base



COMPONENTS TABLE - SE 6-SE 14

SE6 = SE3 + 1xP1	SE9 = SE3 + 2xP1	SE12 = SE3 + 3xP1
SE7 = SE4 + 1xP1	SE10 = SE4 + 2xP1	SE13 = SE4 + 3xP1
SE8 = SE5 + 1xP1	SE11 = SE5 + 2xP1	SE14 = SE5 + 3xP1

Note: It is recommended to place additional supports under pavers with heavy objects, such as Planters & Hot Tubs, for extra support!



Optional Locking
Piece for Fixed Head -
Light Tile Applications



Optional Pins for
IPE Tile Applications



Wood Joist Head for
Wood Joist Applications



LGH2 1/16" (2mm) Leveling Shim



LGH3 1/8" (3mm) Leveling Shim



LH3 1/8" (3mm) Leveling Shim



EH 12



EH 20

CARE & MAINTENANCE

IPE structural wood tiles are constructed exclusively with IPE wood, which is noted not only for its stability in service, but also its long life, hardness, excellent weathering properties and resistance to insect attack. IPE tiles can thus be expected to maintain their attractive appearance over a long period with minimal ongoing maintenance.

IPE wood typically exhibits variation in both color and grain, which can vary both from tile to tile and within the individual slats of a single tile. These variations add to the character and overall appearance of the finished project. Over time however, the color variations will tend to decline and the wood will fade to a soft, silvery grey color.

As supplied, IPE wood tiles do not have any sealer or decking oil applied to the surface. However a wax is applied at the ends of the slats to minimize any slight cracking or checking. If the tiles are not coated with any sealer or decking oil after installation and left to fade naturally, slight “bleeding” of the wax on the ends may give the appearance of water staining on the ends of the wood slats.

STORAGE PRIOR TO INSTALLATION

If the tiles have been supplied on a pallet with stretch wrapping, all the plastic wrapping should be removed and the pallet left in a shaded or covered position out of direct sunlight, until the tiles are installed.

MAINTAINING THE WOOD COLOR

IPE tiles will fade naturally to a silvery grey color if exposed to UV in sunlight. The rate at which this will occur depends largely on the degree of exposure to direct sunlight, the climatic conditions and the frequency at which any preservative treatments are applied.

To slow the rate of this natural fading and to keep the tiles in their optimum condition, as soon as convenient after installing the tiles, we strongly recommend applying a good quality decking oil with a brush or roller. This can not only reduce the rate of fading, but can to some extent help mitigate the loss of moisture on the top of the wood slats which in turn can minimize checking (small cracking) and splitting. Note that a small amount of checking and splitting can be expected as a natural occurrence in the natural weathering process.

Decking oils which contains trans-oxide pigments or other proprietary UV absorbing or reflecting compounds and have a high solids content are preferred for longer term results and extended periods between applications of the decking oil/sealant. These specialized products will help maximize the durability, beauty and value of your tiles and assist in maintaining the original wood color as long as possible. Some proprietary products will also provide additional protection against mold and mildew.

PERIODIC CLEANING

From time to time, it may be necessary to use a commercial cleaning product to both clean the surface of the deck and kill mold spores. Deck brightening products may also be used, providing you carefully test the product in an inconspicuous area to ensure it will achieve the results you require.

PRESSURE WASHING

A pressure washer may be used to remove any built-up dirt, mold or mildew from the surface of the tiles. Although IPE wood is an exceptionally hard and dense species, we recommend you firstly test the pressure washing on an inconspicuous area.



WARRANTY

IPE Structural Wood Tile Manufacturer's Warranty

MRP Supports, LLC (hereinafter referred to as "MRP") warrants to the original purchaser that its structural IPE wood deck tiles shall be free from structural defects caused by insect infestation or fungal decay for a period of three (3) years from the date of original purchase, under normal use and service condition. If a claim arises within the warranty period, you must notify MRP in writing by sending a description of the claimed defect together with supporting photographs and proof of purchase to the following address:

Reseller:

MRP Supports, LLC

3310 N. Benzing Road

Orchard Park, NY 14127

Ph: 800-828-8424

After confirmation by an authorized representative of the defect, our sole responsibility shall be, at its option, to either replace the defective item or refund that portion of the purchase price paid by you for the defective item (not including the cost of its initial installation). This warranty shall not cover and we shall not be responsible for costs and expenses incurred with respect to the removal of defective products or the installation of replacement materials, including but not limited to, labor and freight.

We do not warrant against, is not responsible for, and no implied warranty shall be deemed to cover, any product failure, product malfunction, or damages attributable to:

- Improper installation of the products and/or failure to abide by our installation guidelines.
- Any non-structural cracking, breakage, or other damage occurring during or after installation.
- Use of our products in an application not recommended by our guidelines and local building codes.
- Use of the tiles for other than pedestrian use. Use of wheeled or motorized traffic on the tiles will void the warranty.
- Movement, distortion, collapse or cracking of the surface or the supporting structure on which the products are installed.
- Any act of God (such as flood, hurricane, earthquake, lightning, fire, et al), environmental condition (such as air pollution, mold, mildew, et al), or staining from foreign substances (such as dirt, grease, oil, et al).
- Natural imperfections or variations in the wood.
- Natural weathering of the wood including but not limited to fading of the wood.
- Improper handling, storage, abuse or neglect of the products including but not limited to excessive weights being applied on the tiles.
- Ordinary wear and tear.

You are solely responsible for determining the effectiveness, fitness, suitability and safety of the products in connection with its use in any particular application. No person or entity is authorized by us to make any statement or representation as to the quality or performance of our products other than as contained in this warranty and we shall not be bound by any such statements or representations. This warranty may not be altered or amended except by means of a written document signed by both ourselves and yourself.

Under no circumstances will we be liable or obligated for any incidental, consequential, indirect, special, punitive or any other damages of any kind whatsoever (including, but not limited to, lost profits, lost sales, loss of goodwill, stoppage of work, or impairment of assets), whether foreseeable or unforeseeable, arising out of breach or failure of express or implied warranty, breach of contract, fraud, misrepresentation, negligence, strict liability in tort or otherwise, except and only to the extent this limitation is specifically precluded by applicable law of mandatory application. Our liability with respect to defective products shall in no event exceed the replacement of such products or refund of the purchase price, as described above.

Some states do not allow the exclusion or limitation of incidental or consequential damages, or do not allow limitations on how long an implied warranty lasts, so the above limitation or exclusion may not apply to you. This warranty gives you specific legal rights, and you may also have other rights that vary from state to state.

This warranty shall only be applicable and enforceable in the United States of America and Canada.



PEDESTAL SUPPORTS ■ DRAINS ■ VENTS ■ ACCESSORIES ■ EQUIPMENT

3310 N. Benzing Road
Orchard Park, NY 14127

P 800.828.8424 | F 716.332.7676

mrp@mrpsupports.com
www.mrpsupports.com



An *Elegant*
solution for sloping
or uneven exterior surfaces.

