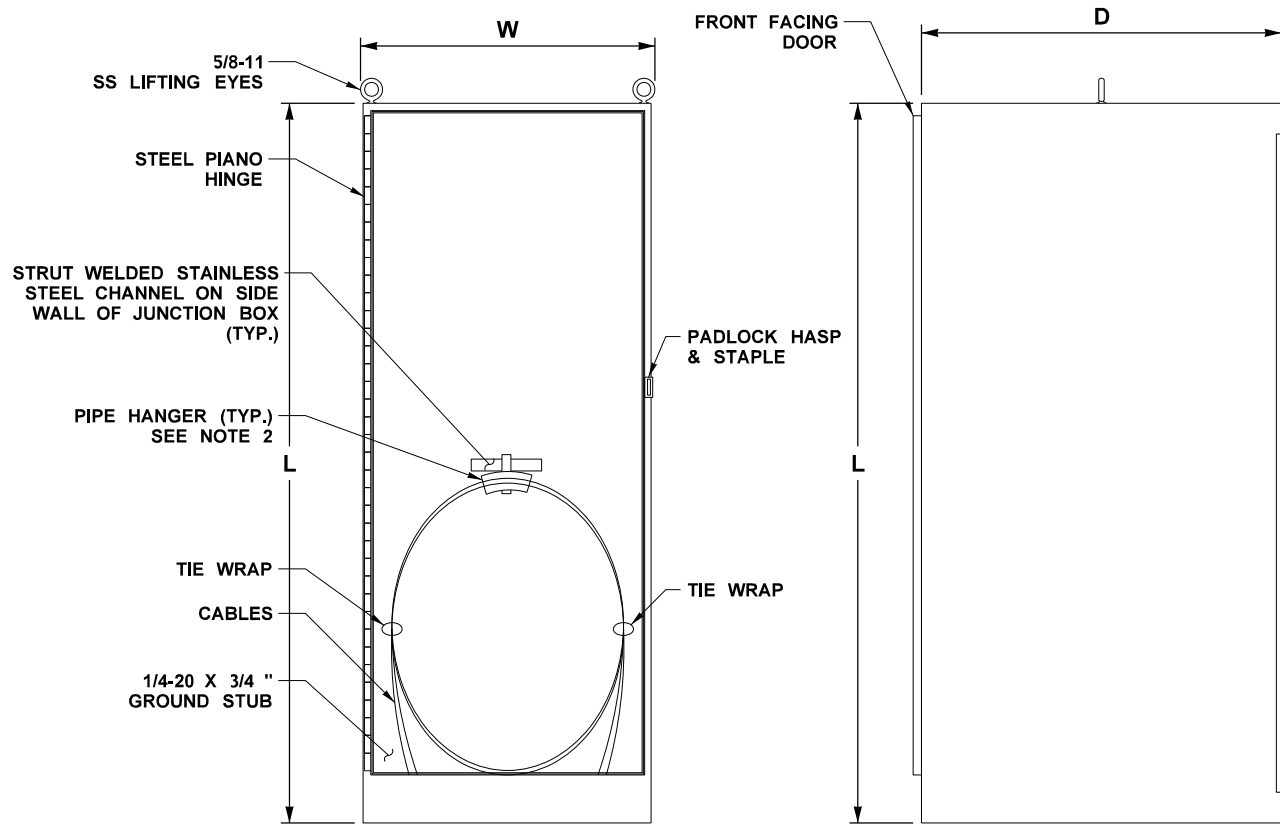
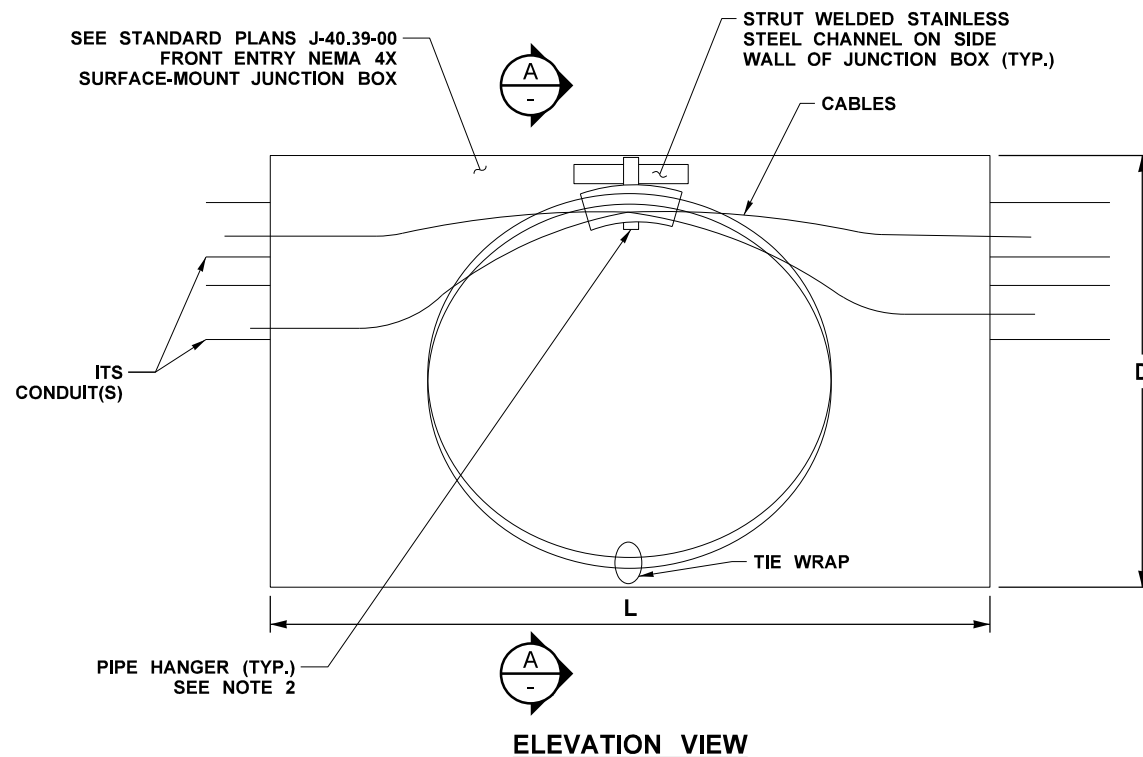
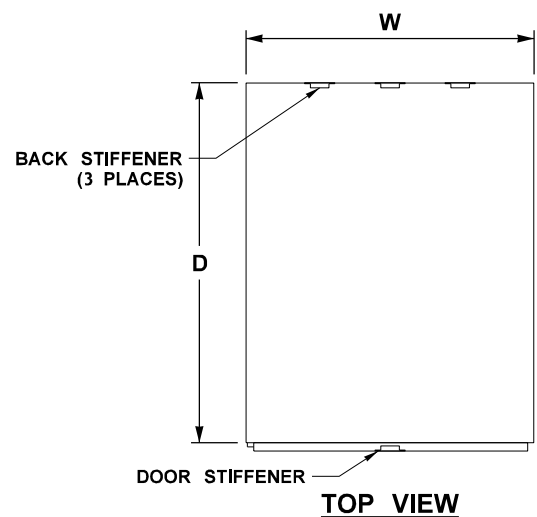


NOTES

1. NEMA ENCLOSURES INSTALLED ON BRIDGES AND STRUCTURES SHALL BE NEMA 4X, 14-GAUGE, TYPE 316 STAINLESS STEEL WITH 14-GAUGE STAINLESS STEEL DOORS SUPPORTED BY A CONTINUOUS STAINLESS STEEL HINGE WITH REMOVABLE PIN. NEMA ENCLOSURES SHALL BE OF SUFFICIENT SIZE TO PROVIDE AMPLE ROOM FOR THE INSTALLATION OF CONDUIT TERMINATIONS, CABLE SPLICES AND CABLE COILING.
2. INSTALL 6" PIPE HANGER, CABLE BUFFER AND MOUNTING HARDWARE INSIDE THE WALL OF FLOOR STANDING NEMA 4X ENCLOSURE AND FRONT ENTRY NEMA 4X SURFACE - MOUNT JUNCTION BOX. SEE DETAIL STD. PLAN J-90.50-00 FOR PIPE HANGER DETAILS.
3. THE FRONT ENTRY NEMA 4X SURFACE - MOUNT JUNCTION BOX SHALL OPEN FROM THE BOTTOM WITH A HINGED DOOR. THE JUNCTION BOX SHALL BE DESIGNED AND FABRICATED IN ACCORDANCE WITH THE DETAILS SHOWN ON THIS SHEET AND ALL REQUIREMENTS IN ACCORDANCE WITH SPECIAL PROVISIONS AND STD. PLAN J-40.39-00. THE JUNCTION BOX MOUNTING FLANGES SHALL BE DESIGNED TO SUPPORT THE WEIGHT OF THE BOX AND ALL CABLES AND SUPPORTS IN THE BOX.
4. INSTALL BACK AND DOOR STIFFENERS ON THE FRONT ENTRY NEMA 4X SURFACE - MOUNT JUNCTION BOX. LARGE SIZE BOXES ONLY.
5. SURFACE-MOUNTED NEMA ENCLOSURES SHALL BE PROVIDED WITH EXTERNAL MOUNTING LUGS. NO ADDITIONAL HOLES SHALL BE DRILLED BEYOND THE REQUIRED AMOUNT TO ACCOMMODATE CABLES AND CONDUITS ENTERING THE ENCLOSURE.
6. NO CONDUIT SHALL ENTER THE TOP OF AN ENCLOSURE. EXTERIOR SURFACE-MOUNTED BOXES SHALL BE PROVIDED WITH HALF-INCH COMBINATION DRAIN AND BREATHER FITTINGS ON THE BOTTOM SIDE OF THE INSTALLED BOX. FITTINGS SHALL NOT AFFECT THE NEMA 4X RATING OF THE ENCLOSURE. INSTALLATION IS DEPENDENT ON THE ORIENTATION OF THE INSTALLED ENCLOSURE. REFER TO MOUNTING DETAILS FOR ORIENTATION.

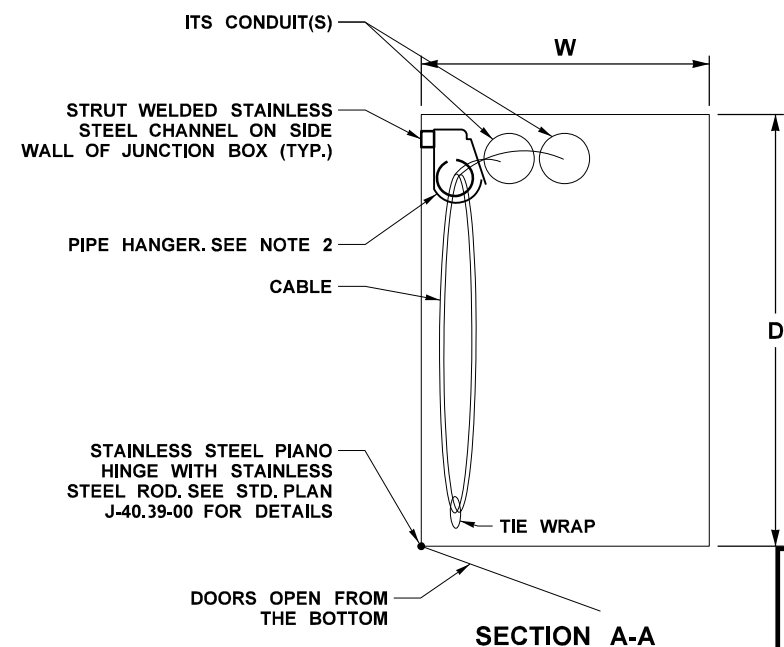


FLOOR STANDING NEMA 4X ENCLOSURE ON BRIDGE UTILITY STRUCTURE

SIZE	L	W	D
LARGE	60"	36"	36"
SMALL	60"	24"	30"

FRONT ENTRY NEMA 4X SURFACE - MOUNT JUNCTION (JX)

SIZE	L	W	D
A	36"	48"	18"
C	36"	18"	24"
D	60"	24"	36"
E	24"	8"	18"
F	24"	10"	18"
G	18"	8"	18"
H	18"	18"	8"
I	16"	12"	6"
M	36"	36"	24"



RELEASED FOR CONSTRUCTION
 Signed: *[Signature]*
 Design Quality Assurance Manager

FLOOR STANDING NEMA 4X ENCLOSURE DETAIL (ON EQUIPMENT PLATFORM)
 N.T.S.

FRONT ENTRY NEMA 4X SURFACE-MOUNT JUNCTION BOX DETAIL (BETWEEN BRIDGE GIRDER)
 N.T.S.

TS.ML

FILE NAME	\\TYLIPW01\ICS01\ICS_pdf_work_dir\46399\65554_99\5134_C9015_DE_TSD_099.dgn		
TIME	4:10:41 AM		
DATE	4/30/2020		
PLOTTED BY	tina.edwards_pbxeng		
DESIGNED BY	J. LEUNG		
ENTERED BY	T. EDWARDS		
CHECKED BY	M. ALTON		
PROJ. ENGR.			
REGIONAL ADM.	REVISION	DATE	BY

REGION NO.	STATE	FED.AID PROJ.NO.
10	WASH	
JOB NUMBER	CONTRACT NO.	LOCATION NO.
	009015	
P.E. STAMP BOX	DATE	P.E. STAMP BOX
	2020-04-29	

Washington State Department of Transportation	SR 520 MONTLAKE TO LAKE WASHINGTON IC AND BRIDGE REPLACEMENT	PLAN REF. NO. TSD099
GRAHAM		SHEET
TYL INTERNATIONAL	PEX ENGINEERING	OF
		SHEETS

ITS DETAILS - NEMA 4X