



King County

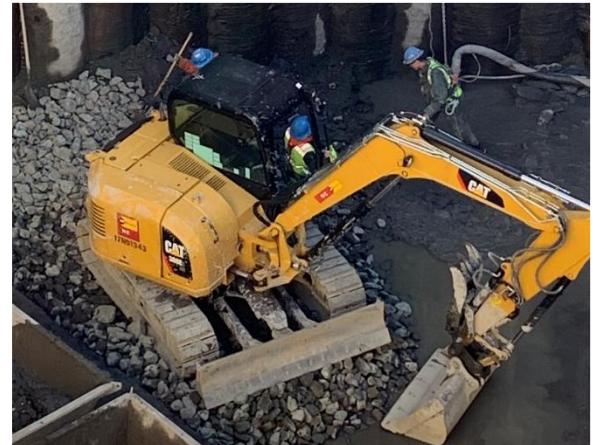
Department of Executive Services

Finance and Business Operations Division

Business Development and Contract Compliance

Joe Baca, CWA Administrator

Samantha Kealoha, Labor Equity Program Manager



Community Workforce Agreement (CWA)

- A Community Workforce Agreement (CWA) is a comprehensive pre-hire collective bargaining agreement between King County and labor unions that sets the basic terms and conditions of employment for public works construction projects.
- Construction projects that include Priority Hire requirements are subject to a Community Workforce Agreement
- The workforce must include a certain percentage of Priority Hire workers
- Applied to County projects \$5m or greater

Master Community Workforce Agreement (MCWA) Update

- MCWA negotiated in 2019
- Signed by King County Executive Constantine and Seattle – King County Building Trades on February 11, 2020
- Threshold for covered projects dropped from \$15m to \$5m on April 15, 2020

Key Elements of the MCWA

Master Community Workforce Agreements

Administrative

- Joint/Project Administrative Committees
- Letters of Assent
- Grievance procedures
- Pre-job conferences
- Uniform drug testing

Workforce

- Priority hire worker, apprentice, pre-apprenticeship graduate, women and people of color utilization
- All workers dispatched by union
- Core workers
- Wages and trust payments
- Standard work hours
- No strike – no lockout
- Safety standards

Upcoming Projects with Priority Hire

2020-21 Projects

- King County LOOP Maintenance Facility - \$5.8 Million
- WPTP Oxygen Generation System - \$6.4 Million
- Cedar Hills Area 7 Stage 5 Ares 7/8 Liner Tie in - \$14 Million
- Eastlake Layover Facility - \$10.6 Million
- RapidRide H-Line - \$30 Million
- PDB for Metro Transit - Electrification of South Campus - \$36.9 Million



Eastlake Layover Facility

- Engineer's Estimate - \$10.6 Million
- Estimated Advertising Date – 12/2020

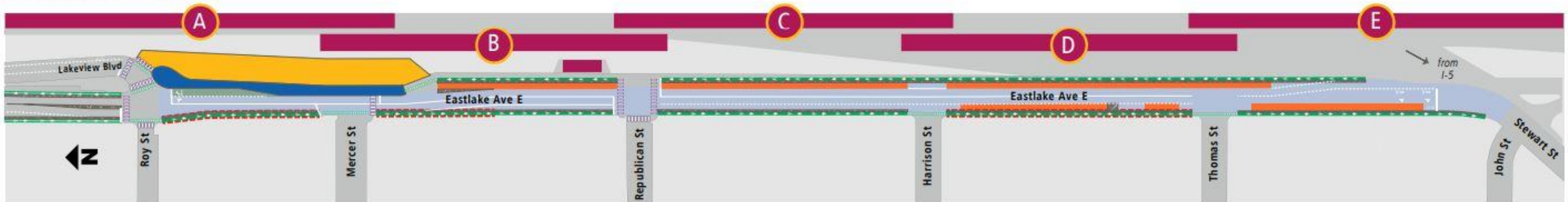
Project Details

- New Facility
- Accommodates 11 new bus layover spaces
- Comfort Station for bus operators – secured restrooms and break space
- Roadway Changes



Eastlake Layover Facility design rendering.

ROADWAY CHANGES



RAPIDRIDE H-Line

- Engineer's Estimate - \$23 Million
- Estimated Advertising Date – 12/2020

Project Details

- Bus Stop Upgrades
- Improvements to sidewalks, street crossings and paths
- Access for Burien and White Center residents to public transportation routes



PDB for Metro Transit – Electrification of South Campus

Expanding South Campus in Tukwila



- Engineer's Estimate - \$36.9 Million
- Estimated Advertising Date – 2/2021

Project Details

- Progressive Design Build for the South Base Campus
- Electrical Infrastructure or Battery Electric Bus (BEB) operations
- Charging Infrastructure
- Charge Management System

Questions?

Joe Baca

CWA Administrator

206-458-8388

Jbaca@kingcounty.gov

Samantha Kealoha

Labor Equity Program Manager

206-263-5856

SKealoha@kingcounty.gov

www.kingcounty.gov/priorityhire

Kevin Kibet

Transit Capital Program Manager

206-263-1553

KKibet@kingcounty.gov

