



Aug 14

Salishan & Hillside Terrace Bid Opportunity Events Launch This August

Starting next Tuesday, August 19th, 1DROPP is partnering with the Salishan-Hillside Phase I LLLP, [Tacoma Housing Authority](#), [LMC Construction](#), and [Brawner](#) to host three Bid Opportunity Events for subcontractors for the renovation of **316 homes across Salishan and Hillside Terrace communities** breaking ground this Winter 2025.

Designed to **expand subcontractor access to local opportunities**, these sessions will offer licensed subcontractors direct access to project scopes, timelines, and eligibility criteria. We strongly encourage participation from local and diverse firms—including those based in the South Sound—to attend. The events are part of a [broader model intended to embed equitable access into available construction opportunities](#) through intentional outreach, workforce development, and community-informed design.

Event Details & What to Expect

Each session is designed to equip subcontractors with the information and tools needed to participate effectively in the bidding process.

Participants will:

- Learn how to **prepare and submit compliant bids**
- Review trade-specific scopes, **including HVAC, electrical, plumbing, painting, and flooring**
- Understand key requirements, including **reporting, insurance, and certifications**
- Meet **project leadership** and ask questions directly

These events are about visibility, connection, and positioning. **It's one way we help smaller firms access bigger opportunities,** now and in the future.

- Reggie Brown



Designed for Growing Businesses

We encourage participation from:

- Licensed subcontractors across all trades
- Certified MWBE and DBE firms
- Emerging, small, and mid-sized businesses
- Firms experienced in residential rehabilitation or multifamily renovations

Whether you're a seasoned contractor or newer, these events offer a strategic **opportunity to expand your network and position your firm** for future work.

Event Schedule

East Tacoma

Date: Tuesday, August 19th

Time: 4:00–6:00 PM

Location: [Salishan Community Health Center, 1724 E 44th St, Tacoma, WA 98404](#)

Hilltop

Date: Thursday, September 4th

Time: 4:00 - 6:00p

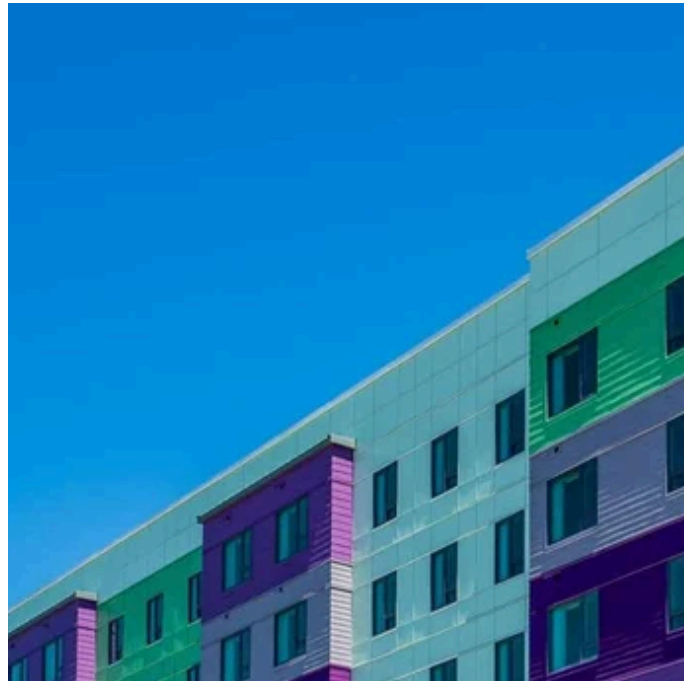
Location: [Housing Hilltop North, 1011 S L St, Tacoma, WA 98405](#)

Virtual Session

Date: Thursday, September 11th

Time: 3:00–5:00 PM

Platform: Zoom ([link provided upon RSVP](#))



Left image: Neighborhood view of Salishan. **Right image:** Housing Hilltop building — both images are courtesy of [Tacoma Housing Authority](#).

RSVP & Registration

To attend, please RSVP here: 1drop.co/salishan

Early registration is encouraged, as space at in-person sessions may be limited.

The Broader Vision

This approach reflects 1DROP's commitment to reshaping who gets to build and benefit from our region's housing investments. In an industry where **fewer than one percent** of developers nationally are Black or Hispanic, creating systematic pathways for participation requires intentional collaboration.

“We want contractors to win this work—but we also want them to be better positioned for the next one. That’s the real value of this kind of outreach.”

— Dominique Remy

 To learn more about the partnership behind this project, [read our announcement blog here](#).



About 1DROP

[1DROP](#) is a collective of underrepresented real estate developers addressing the Puget Sound housing crisis. Committed to empowering underrepresented developers to build housing for all wages, all stages, and all ages, 1DROP pioneers innovative solutions to change historical outcomes through real estate ownership and development.

1DROP achieves its mission by providing educational programming and marshaling resources for underrepresented developers.

For those inspired to learn more or get involved in supporting equitable housing, visit [Build With Us](#) to explore our initiatives and join us in making an impact.

About the Tacoma Housing Authority

The [Tacoma Housing Authority](#) (THA) is a national leader in poverty reduction and affordable housing, working to provide stable and quality housing options for low-income individuals and

families. THA's comprehensive approach includes not only housing assistance but also educational, economic, and community development programs designed to create pathways to self-sufficiency and improve the overall well-being of its residents.

About Brawner

[Brawner](#) is a pioneer in advancing new approaches to financing, design, and construction that not only reduce costs but also enhance the quality and sustainability of housing developments. With a 30-year track record of delivering high-quality projects, their expertise in various aspects of construction, including renovation and rehabilitation, makes them a valuable partner in initiatives aimed at improving community housing. Brawner is committed to fostering collaborative relationships and contributing to the success of projects that benefit local communities.

About LMC Construction

[LMC Construction](#) is more than just a builder. They are deeply committed to making a positive impact in the communities they serve. Since their inception in 2004, they have been dedicated to the construction and renovation of affordable housing throughout Oregon and Washington. With a belief that everyone deserves access to clean, safe, and affordable housing, they choose to play a key role leveraging housing to build strong and stable families and communities.

Have questions or suggestions for this post?

We're here to engage! For edits, feedback, or inquiries about this blog post, please reach out to press@1drop.co.

Salishan-Hillside Phase I
LLLP's 316-Unit Renovation
to Showcase Innovative
Equitable Construction
Leadership Model



Don't miss a drop.

Subscribe now for:

- Developer stories
- Project highlights
- Program insights
- Follow our impact



Name (required)

First Name

Last Name

Email (required)

Subscribe

1DROP Copyright (C) 2024 [Terms of Use](#) | [Privacy Policy](#)

Seattle - Tacoma - Bellevue - King County - Pierce County



