



ELLIOTT AMENITY LTD

FOR ALL YOUR AMENITY SOLUTIONS

Professional Fertilisers, Seed and Amenity

Equipment Designed for the Sports Industry

W: www.elliottamenity.com

E: sales@elliottamenity.com

T: 0151 440 3384



Organic/Organo-mineral fertilisers and biostimulants provide many benefits to turf grass in addition to providing nutrients for strong and healthy growth. These products can help enhance disease resistance, improve stress tolerance, facilitate absorption of applied nutrients, and encourage growth of beneficial soil microbes. They help aid quick establishment of newly seeded areas and speed up recovery after renovation activities. All our organic/organo-mineral fertilisers and biostimulants are manufactured from plant sources and are tried and tested by our customers.

NEW to Velvit

Fulvic Acid Concentrate

Incorporating Fulvic Acid into your treatment plans can significantly contribute to the overall health and quality of the turf, leading to more resilient and aesthetically pleasing surfaces. [Page 13](#)

Humic Acid Concentrate

Including Humic Acid in your application plans will aid the vitality and resilience of your turf, leading to improved playing surfaces. [Page 13](#)

Shea

Crafted by combining mineral fertilisers with the surplus organic material produced during shea seed processing to create a valuable and eco-friendly resource. [Page 5](#)



ONYX is an organic granular fertiliser that is certified through OF&G. It helps to protect against stress and promote healthy/beneficial soil biology.



ONYX Liquid organic fertiliser helps protect against stress and promotes recovery and plant-health.



The Vel-sea liquid fertiliser range includes products that contain N-P-K fertilisers with added seaweed extracts to work in conjunction with the applied nutrient.



Vel-sea seaweed extract is packed full of 17 amino acids, plant hormones, carbohydrates and trace elements.



Aminaid should be applied before and during periods of stress that may affect the turf such as drought, temperature extremes, salinity or excessive wear.



Purity Soil Conditioner provides the soil with a building block of organic matter and stimulates nutrients to release steadily.



YUCCA is a natural alternative to synthetic wetters that is completely nonphytotoxic to turfgrass and plants, even when used in hot weather.

Look out for these badges



Organic derived



Organo-mineral



NEW to Velvit

Shea



Shea organo-mineral fertilisers are a combination of mineral fertilisers and surplus organic material produced during the processing of shea seeds. Shea seeds, primarily known for their use in cosmetics and food products, generate substantial surplus organic material in these industries. Now, through innovative recycling and processing methods, this material offers an environmentally responsible medium for fertilisers. Shea organo-mineral fertilisers are suitable for a wide range of sports turf and amenity applications. Greens, pitches and lawns will all benefit from the inclusion of these products in their treatment programmes. Choose from two nutrient ratios and two granule size options to suit the needs of your turf.

Product Name	Description	Longevity (weeks)	Grade (mm)	Pack Size (kg)	Application rate (kg/ha)	Organic Matter (%)	Nutrient Breakdown						Application period
							Nitrogen			P ₂ O ₅ (%)	K ₂ O (%)	MgO (%)	
							Organic Derived (%)	Ureic (%)	Ammoniacal (%)				
12-4-6 + 2% MgO	Spring/Summer formulation that will give a boost of growth and provide vital nutrients to the turf, with added magnesium for green-up	6	1-2	20	250-350	46	3.5	7	1.5	4	6	2	<div><div>J</div><div>F</div><div>M</div><div>A</div><div>M</div><div>J</div></div>
		2-3	<div><div>J</div><div>A</div><div>S</div><div>O</div><div>N</div><div>D</div></div>										
6-4-12 + 2% MgO	Autumn-based formulation focused on recovery and strengthening ready for winter, with added magnesium for green-up	6	1-2	20	250-350	50	6	-	-	4	12	2	<div><div>J</div><div>F</div><div>M</div><div>A</div><div>M</div><div>J</div></div>
		2-3	<div><div>J</div><div>A</div><div>S</div><div>O</div><div>N</div><div>D</div></div>										



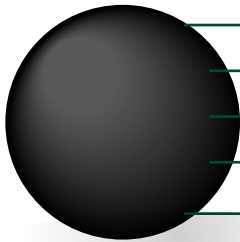
ONYX Granular



ONYX organic granular products are manufactured from plant material to create a powerful biostimulant-fertiliser that helps protect against stress and promote recovery. ONYX products provide high levels of amino acids that stimulate the soil biology, while also supplying vital nutrients to support plant growth and development.

Benefits include:

- Enhanced seed germination
- Improves root growth
- Promotes beneficial bacteria
- Conditions against stress



- Stress conditioning
- High in amino acids
- Stimulates soil biology
- Promotes healthy growth
- Homogeneous granule



Product Name	Description	Longevity (weeks)	Grade (mm)	Cut Height (mm)	Pack Size (kg)	Application rate (kg/ha)	Amino Acids (%)	Nutrient Breakdown			Application period
								Nitrogen	P ₂ O ₅ (%)	K ₂ O (%)	
								Organic Derived (%)			
Mini Granules (1-2 mm)	Mini size granules make it ideal for greens and close-cut turf	6	1-2	6	20	350-500	11.4	10	0	4	<div><div>J</div><div>F</div><div>M</div><div>A</div><div>M</div><div>J</div><div>J</div><div>A</div><div>S</div><div>O</div><div>N</div><div>D</div></div>
Regular Granules (2-3 mm)	Higher nitrogen content for greater boost of growth with phosphorous for improved root development	6	2-3	10	20	350-500	30.31	13	1	2	<div><div>J</div><div>F</div><div>M</div><div>A</div><div>M</div><div>J</div><div>J</div><div>A</div><div>S</div><div>O</div><div>N</div><div>D</div></div>



ONYX Mini (1-2 mm)

Mini size granules make it ideal for greens and close-cut turf

Application Rate:

350-500 kg/ha

Unit Size:

20 kg

Application period:



Turf height:

>6 mm

Amino Acid	Percentage (%)
Alanine	1.4
Arginine	0.21
Aspartic acid	0.71
Cysteine	0.08
Glutamic acid	6.6
Glycine	0.3
Isoleucine	0.22
Leucine	0.3
Lysine	0.19
Methionine	0.27
Phenylalanine	0.18
Proline	0.18
Serine	0.09
Threonine	0.15
Tyrosine	0.13
Valine	0.39
Total	11.4

Amino Acid	Percentage (%)
Alanine	2.56
Arginine	1.09
Aspartic acid	0.65
Cysteine	0.44
Glutamic acid	10.36
Glutamine	5.44
Glycine	5.39
Histidine	0.21
Isoleucine	0.06
Leucine	0.12
Lysine	0.45
Methionine	0.08
Phenylalanine	0.13
Proline	1.21
Serine	0.13
Threonine	1.05
Tryptophan	0.21
Tyrosine	0.58
Valine	0.15
Total	30.31

ONYX Regular (2-3 mm)

Higher nitrogen content for greater boost of growth with phosphorous for improved root development

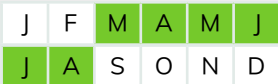
Application Rate:

350-500 kg/ha

Unit Size:

20 kg

Application period:



Turf height:

>10 mm

ONYX Liquid Biostimulant

ONYX Liquid is an organic biostimulant fertiliser. A rich black liquid, made from plant-based materials; ONYX Liquid provides high-levels of amino acids, plus nitrogen and potassium as well as phosphorus, trace elements and carbohydrates. It provides not only the nutrition for growth and root development, but also a biostimulant effect to encourage germination, establishment and resistance to environmental stress factors.

Benefits include:

- Enhanced seed germination
- Improves root growth
- Promotes beneficial bacteria
- Conditions against stress



Amino Acid	Foundation (%)	Iron & Sugar Plus (%)
Alanine	0.23	0.18
Arginine	0.03	0.02
Aspartic acid	0.73	0.58
Cysteine	0.02	0.02
Glutamic acid	2.58	2.06
Glycine	0.15	0.12
Histidine	0.03	0.02
Hydroxyproline	0.20	0.16
Isoleucine	0.08	0.06
Leucine	0.11	0.09
Lysine	0.05	0.04
Methionine	0.02	0.02
Ornithine	0.05	0.04
Phenylalanine	0.06	0.05
Proline	0.09	0.07
Serine	0.12	0.10
Threonine	0.09	0.07
Tyrosine	0.09	0.07
Valine	0.12	0.1



Vel-sea



Vel-sea Liquid Seaweed Fertilisers

The Vel-sea range includes products that contain N-P-K fertilisers with added seaweed extracts to work in conjunction with the applied nutrients, keeping your turf healthy, and prepared for the demands of professional turf management.

Product Name	Description	Longevity (weeks)	Pack Size (L)	Application rate (L/ha)	Water per hectare (L/ha)	Amino Acids (%)	Nutrient Breakdown				Application period
							Nitrogen		P ₂ O ₅ (%)	K ₂ O (%)	
							Organic Derived (%)	Ureic (%)			
Foundation	Powerful biostimulant-fertiliser for use throughout the season to relieve stress and boost health. Certified through OF&G.	4	2 x 10 L	20-60	300-500	9.2	3.5	0	0	4.3	<div><div>J</div><div>F</div><div>M</div><div>A</div><div>M</div><div>J</div></div> <div><div>J</div><div>A</div><div>S</div><div>O</div><div>N</div><div>D</div></div>
Iron	Iron strengthens the turf and encourages quick green-up. (1.2% Fe)	4	2 x 10 L	20-60	300-500	6.5	2.8	0.4	0	3.4	<div><div>J</div><div>F</div><div>M</div><div>A</div><div>M</div><div>J</div></div> <div><div>J</div><div>A</div><div>S</div><div>O</div><div>N</div><div>D</div></div>
Sugar Plus	A sugar enriched product that develops the soil biology and greatly improves soil structure. (16% Sugar)	4	2 x 10 L	20-60	300-500	6.5	2.8	0	0	3.4	<div><div>J</div><div>F</div><div>M</div><div>A</div><div>M</div><div>J</div></div> <div><div>J</div><div>A</div><div>S</div><div>O</div><div>N</div><div>D</div></div>

Product Name	Description	Pack Size (L)	Application rate (L/ha)	Water per hectare (L/ha)	Nutrient Breakdown				Application period											
					Nitrogen		P ₂ O ₅ (%)	K ₂ O (%)												
					Ammoniacal (%)	Ureic (%)														
4-4-12 + 4% Seaweed	Strengthens and increases the hardness of turf without causing unnecessary growth	2 x 10 L	40-80	300-600	0.8	3.2	4	12	J	F	M	A	M	J	J	A	S	O	N	D
15-0-10 + 4% Seaweed	Combination of high nitrogen concentration and potassium encourages top growth and increases stress tolerance	2 x 10 L	40-80	300-600	0	15	0	10	J	F	M	A	M	J	J	A	S	O	N	D
16-2-8 + 4% Seaweed	Complete feed and health boost for use any time in the growing season	2 x 10 L	40-80	300-600	0.4	15.6	2	8	J	F	M	A	M	J	J	A	S	O	N	D



Vel-sea Liquid Seaweed Extract



Seaweeds have been used for millennia to improve soil fertility and crop production. Liquid seaweed extracts are particularly important for helping turf deal with periods of stress, whether from drought, heat, salinity or periods of high traffic.

Benefits include:

- Stimulate natural plant response to stress
- Aids germination
- Chelates applied nutrients
- Encourage beneficial soil microorganisms

Vel-sea seaweed extract is packed full of amino acids, plant hormones, carbohydrates, vitamins and trace elements. Vel-sea seaweed extract is derived from *Ascophyllum nodosum* harvested off the west coast of Ireland.

Product Name	Description	Dry matter (w/v)	Pack Size (L)	Application rate (L/ha)	Water per hectare (L/ha)	Application period
Cold Pressed 10% Seaweed	Derived from <i>Ascophyllum nodosum</i> without use of chemicals or heat	10.0%	2 x 10 L	20-80	300-500	J F M A M J J A S O N D
20% Seaweed	Highly concentrated biostimulant containing an organic source of trace elements and plant stimulants	20.0%	2 x 10 L	10-20	300-500	J F M A M J J A S O N D
8% Seaweed	Concentrated biostimulant that contains an organic source of trace elements and plant stimulants.	8.0%	2 x 10 L	20-40	300-500	J F M A M J J A S O N D

Aminaid Biostimulant Liquids



Aminaid should be applied before and during periods of stress that may affect the turf such as drought, temperature extremes, salinity or excessive water. Apply 2-3 applications 10-14 days apart during critical growth stages or during periods of stress.

Benefits include:

- Building blocks for proteins
- Stimulate growth and defence systems
- Improve absorption of applied fertilisers
- Encourage beneficial microbes

Aminaid is a range of biostimulants that stimulant growth and boost protection against stressful conditions.

Product Name	Description	Pack Size (L)	Application rate (L/ha)	Water per hectare (L/ha)	Amino Acids (%)	Application period
Aminaid Amino Foliar	Concentrated amino acids formulated for foliar application to supplement other fertilisers and turf chemicals	2 x 10 L	5	300	28.8	J F M A M J J A S O N D
Aminaid Amino Root	Formulated for both foliar and root absorption to supplement other fertilisers and turf chemicals. Contains additional humic acids and seaweed extract	2 x 10 L	10	500	25.6	J F M A M J J A S O N D



Purity Soil Conditioner

The aim of Purity Soil Conditioner is to provide the soil with a building block of organic matter. This will stimulate all available nutrients to release steadily over a 6–8-week period. Purity Soil Conditioner can be used all year round, but we recommend application in early spring and early autumn/winter. *‘...the following morning the product had achieved some extraordinary results!’* Kim Blake, Course Manager, Fulford Heath Golf Club

Purity Soil Conditioner is fantastic for:

- Golf Courses
- Bowling Greens
- Football Pitches
- Rugby Pitches
- Lawn Care
- Croquet Lawns
- Cricket Squares and Outfield

Application Rate:

300 kg/ha

Ideally water in heavily after application but this is not essential.

Unit Size:

20 kg

Application period:

J	F	M	A	M	J
J	A	S	O	N	D

Purity Soil Conditioner Liquid



Our extremely popular granular Purity Soil Conditioner now has a liquid version. Containing the same active ingredients and to be used for the same regime as granular Purity, this product is designed for those who would like to apply Purity through their sprayers. Apply during the autumn to spring period as required. A single application should be sufficient if applied at the correct time of year but monitor the results and consider a repeat application if required.

Application Rate:

60 L/ha in 500 L/ha of water

Ideally water in heavily after application but this is not essential.

Unit Size:

2 x 10 L

This product contains saponins extracted from tea seed oil and care should be exercised in its use.

Application period:

J	F	M	A	M	J
J	A	S	O	N	D

NEW to Velvit

Fulvic Acid Concentrate



Fulvic Acid Concentrate is a powerful biostimulant for turf that offers a range of benefits for sports fields and other turfgrass areas.

Advantages of using Fulvic Acid in turf management:

- Nutrient uptake: Chelation & increased cation exchange capacity (CEC)
- Stress resistance: Drought & heat tolerance
- Root development: Increased root length, density & formulation
- Fast recovery: Quick healing of turf damage
- Compatibility

Application:

5-10 L/ha in 300-600 L of water

Unit Size:

2 x 10 L

Application period:

J	F	M	A	M	J
J	A	S	O	N	D

Incorporating Fulvic Acid Concentrate into your treatment plans can significantly contribute to the overall health and quality of the turf, leading to more resilient and aesthetically pleasing surfaces.

Humic Acid Concentrate



Humic Acid Concentrate is another valuable biostimulant for turf management.

The benefits can be:

- Nutrient retention and availability: Nutrient binding & increased cation exchange capacity (CEC)
- Soil structure: Improved aeration & reduced soil compaction
- Water retention in the soil
- Microbial activity: beneficial microbes & disease suppression
- pH regulation

Application:

5-10 L/ha in 300-600 L of water

Unit Size:

2 x 10 L

Application period:

J	F	M	A	M	J
J	A	S	O	N	D

Including Humic Acid Concentrate in your application plans will aid the vitality and resilience of your turf, leading to improved playing surfaces.



YUCCA



YUCCA liquid concentrate is a natural extract derived from the *Yucca schidigera* plant that grows in the deserts of the Americas. Yucca plants produce high levels of natural surfactants and steroid saponins that enable them to survive in harsh habitats with extreme heat, drought and soil salinity. YUCCA is a natural alternative to synthetic wetters that is completely nonphytotoxic to turfgrass and plants, even when used in hot weather. Add to tank mixes or fertigation systems to enhance water and nutrient uptake and improve pesticide performance. YUCCA is also an effective organic biostimulant that increases water uptake and root growth for better plant quality and stress tolerance.

Application:

Monthly

18-30 L/ha in 500-1,000 L/ha of water

Dry patch treatment

500-1,000 L/ha diluted 1:1

Unit Size:

2 x 10 L

Application period:

J	F	M	A	M	J
J	A	S	O	N	D



Liquid Fertiliser

Liquid nutrients can provide a fast plant response with nutrients taken up via foliar application or by quickly penetrating the rootzone. The Velvit range includes a variety of technologies for best results on quality turf throughout the growing season. See our organic and biostimulant options on [pages 8 and 9](#).



Total Event is an all-in-one fertiliser designed for main season application.



First & Last is an all-in-one fertiliser designed for autumn to spring application.



Trace-E liquid is a trace element solution specially formulated for rapid assimilation and correction of micronutrient deficiencies.



A fast-acting all-in-one green-up product designed to rapidly increase chlorophyll content when quick results are needed.



A range of high-quality liquid NPK fertilisers providing targeted nutrition and simple, reliable application.



NMAXX is a stabilised nitrogen fertiliser that provides extended nitrogen availability for up to 5 weeks.



Fortitude iron liquids are formulated for straightforward application, reliable green-up and correction of iron deficiencies across a wide range of turf and soil conditions.



Designed to tackle the soil cast problem by acidifying the top layer of soil in amenity turf.

Complete Liquid Fertilisers

Velvit Complete Liquids are perfect for providing an overall nutrient solution in a quick and easy to apply package. They particularly excel when needing to quickly improve turf before an event or using as a top up between granular applications.

Total Event

A main season all-in-one fertiliser that hardens turf, stimulates root development, encourages green-up, increases tolerance to stress and disease, and encourages soil microbiology.

Application:
40-100 L/ha in 300-500 L of water

Analysis:
14-0-6 + 0.5% MgO + 0.5% Fe. Includes seaweed extract, trace elements, fulvic acid, indicator dye and wetting agent. (Fe chelated by EDTA)

Unit Size:
2 x 10 L

Application period:

J	F	M	A	M	J
J	A	S	O	N	D



First & Last

An all-in-one fertiliser designed for autumn to spring application. First & Last encourages green-up, stimulates root development, and increases tolerance to disease and stress. Use First & Last to provide maximum protection and maintaining quality.

Application:
40-100 L/ha in 300-500 L of water

Analysis
2.5-0-8 + 1% Fe + trace elements. Includes seaweed, fulvic acids, wetting agent and indicator dye.

Unit Size:
2 x 10 L

Application period:

J	F	M	A	M	J
J	A	S	O	N	D



Trace-E

A chelated trace element solution specially formulated for rapid assimilation and correction of micronutrient deficiencies.

Nutrient	%
MgO	1.32
Fe	1.32
Mn	0.32
Zn	0.18
B	0.14
Cu	0.03
Mo	0.02
SO ₃	2.56

Application:
20-40 L/ha in 300-500 L of water

Unit Size:
2 x 10 L

Application period:

J	F	M	A	M	J
J	A	S	O	N	D



Snappy Green

A fast-acting all-in-one green-up product to rapidly increase chlorophyll content when results are needed. Snappy Green also encourages healthy soil biology, reduces stress, and improves root growth.

Application:
20-40 L/ha in 300-500 L of water

Analysis
4-0-2.6 + 4% MgO + 1% Fe (chelated with EDTA) with ONYX and wetting agent.

Unit Size:
2 x 10 L

Application period:

J	F	M	A	M	J
J	A	S	O	N	D



Velvit Essential Liquid Fertiliser

A range of high-quality liquid NPK fertilisers providing targeted nutrition and simple, reliable application. Suitable for spray applications across a range of surfaces from sports turf, lawn care, agriculture, and horticulture.



Product Name	Description	Longevity (weeks)	Pack Size (L)	Application rate (L/ha)	Water per hectare (L/ha)	Nutrient Breakdown				Application period
						Nitrogen		P ₂ O ₅ (%)	K ₂ O (%)	
						Ammoniacal (%)	Ureic (%)			
24-0-0	High nitrogen liquid fertiliser to stimulate turf, encourages top growth	2	20	40-100	300-500	0	24	0	0	<div><div>J</div><div>F</div><div>M</div><div>A</div><div>M</div><div>J</div><div>J</div><div>A</div><div>S</div><div>O</div><div>N</div><div>D</div></div>
3-0-20	Ideal for turf that requires stress resistance and turf hardening before stressful periods of the season	2	20	40-100	300-500	0	3	0	20	<div><div>J</div><div>F</div><div>M</div><div>A</div><div>M</div><div>J</div><div>J</div><div>A</div><div>S</div><div>O</div><div>N</div><div>D</div></div>
4-4-12	Apply during stressful periods to improve turf health	2	20	40-100	300-500	0.8	3.2	4	12	<div><div>J</div><div>F</div><div>M</div><div>A</div><div>M</div><div>J</div><div>J</div><div>A</div><div>S</div><div>O</div><div>N</div><div>D</div></div>
0-0-16	For turf requiring additional hardening or stress resistance before stressful periods of the season	2	20	40-100	300-500	0	0	0	16	<div><div>J</div><div>F</div><div>M</div><div>A</div><div>M</div><div>J</div><div>J</div><div>A</div><div>S</div><div>O</div><div>N</div><div>D</div></div>
0-0-28	Immediately available potassium for stress tolerance and disease resistance	2	20	40-100	300-500	0	0	0	28	<div><div>J</div><div>F</div><div>M</div><div>A</div><div>M</div><div>J</div><div>J</div><div>A</div><div>S</div><div>O</div><div>N</div><div>D</div></div>
12-0-12	Balanced nitrogen and potassium liquid fertiliser that encourages top growth and increases stress tolerance	2	20	40-100	300-500	0	12	0	12	<div><div>J</div><div>F</div><div>M</div><div>A</div><div>M</div><div>J</div><div>J</div><div>A</div><div>S</div><div>O</div><div>N</div><div>D</div></div>
19-4-4	High nitrogen liquid fertiliser with additional phosphorus and potassium	2	20	40-100	300-500	0.8	18.2	4	4	<div><div>J</div><div>F</div><div>M</div><div>A</div><div>M</div><div>J</div><div>J</div><div>A</div><div>S</div><div>O</div><div>N</div><div>D</div></div>
16-2-8	Balanced feed to generate growth and root development	2	20	40-100	300-500	0.4	15.6	2	8	<div><div>J</div><div>F</div><div>M</div><div>A</div><div>M</div><div>J</div><div>J</div><div>A</div><div>S</div><div>O</div><div>N</div><div>D</div></div>
20-0-10	Fast-acting liquid fertiliser for main growing season application	2	20	40-100	300-500	0	20	0	10	<div><div>J</div><div>F</div><div>M</div><div>A</div><div>M</div><div>J</div><div>J</div><div>A</div><div>S</div><div>O</div><div>N</div><div>D</div></div>



MaxiCal

- Key points:**
- Boosts turf colour and quality
 - Supplements Calcium and Magnesium levels
 - Especially useful on sand based constructions
 - Highly compatible tank-mix partner

- Areas of use:**
- Stadia pitches
 - Sportfields
 - Greens
 - Tees

- Fairways
 - Outfields
 - Lawns

Application period:

J	F	M	A	M	J
J	A	S	O	N	D

Product Performance	
Turf Response	Immediate
Longevity	2-4 weeks
Product characteristic	
Type	Liquid
Pack Size	10 litre, 200 litre and 1,000 litre
Pack Coverage	1,250 – 5,000 m2
Application	
Application rate	20 - 80 L/ha
Water Volume	400 - 1,000 L/ha
Frequency	Depends on application rate (2-4 weeks)

NMAXX Slow-Release Fertilisers

NMAXX is a stabilised nitrogen source that uses urease and nitrification inhibitors to slow down the conversion of urea to nitrate in the soil. NMAXX liquids can supply up to 5 weeks of nitrogen availability and supplies protection against all forms of nitrogen loss – leaching, denitrification and volatilisation.



Product Name	Description	Longevity (weeks)	Pack Size (L)	Application rate (L/ha)	Water per hectare (L/ha)	Nutrient Breakdown					Application period												
						Nitrogen			P ₂ O ₅ (%)	K ₂ O (%)													
						NMAXX (%)	Ammoniacal (%)	Ureic (%)															
15-0-12	Balanced NK for increased resistance to stress and disease	5	2 x 10 L	40-100	300-500	100	0	15	0	12	<table><tr><td>J</td><td>F</td><td>M</td><td>A</td><td>M</td><td>J</td></tr><tr><td>J</td><td>A</td><td>S</td><td>O</td><td>N</td><td>D</td></tr></table>	J	F	M	A	M	J	J	A	S	O	N	D
J	F	M	A	M	J																		
J	A	S	O	N	D																		
6-2-12	High potassium product to stimulate roots and disease response without excessive top growth	5	2 x 10 L	40-100	300-500	93	0.4	5.6	2	12	<table><tr><td>J</td><td>F</td><td>M</td><td>A</td><td>M</td><td>J</td></tr><tr><td>J</td><td>A</td><td>S</td><td>O</td><td>N</td><td>D</td></tr></table>	J	F	M	A	M	J	J	A	S	O	N	D
J	F	M	A	M	J																		
J	A	S	O	N	D																		
24-0-0	Apply in spring and summer when a boost of nitrogen is required	5	2 x 10 L	40-80	300-500	80	0	24	0	0	<table><tr><td>J</td><td>F</td><td>M</td><td>A</td><td>M</td><td>J</td></tr><tr><td>J</td><td>A</td><td>S</td><td>O</td><td>N</td><td>D</td></tr></table>	J	F	M	A	M	J	J	A	S	O	N	D
J	F	M	A	M	J																		
J	A	S	O	N	D																		



Fortitude

Stress ReLeaf

7-0-0 +2Fe +TE +Wetter +Amino
2 x 10ltrs Boxed

Key points:

- Original formulation
- Immediate colour-up response
- Long-lasting results
- Can be used as part of an integrated turf management plan
- Ideal tank-mix partner for Ryder

Areas of use:

- Greens
 - Fairways
 - Greens Surrounds
 - Greens Collars & Approaches
 - Stadia Pitches
 - Outfields
- Lawns
 - Tees
 - Sports Pitches
 - Racecourse/Gallops
 - Cricket Table
 - Lawn Tennis

Application period:

J	F	M	A	M	J
J	A	S	O	N	D

Product characteristic	
Type	Liquid
Technology	Conventional
Analysis	7-0-0 +2Fe +sugars +wetting agents +amino +TE
Pack size	10 litre, 200 litre, 1,000 litre
Pack coverage	2,000–4,000m ² (10 litre pack)
Longevity*	4 weeks
Typical turf response*	< 24 hours
Specific gravity	1.24
Application	
Application rate	25–50 L/ha
Water Volume	400–600 L/ha
Frequency	Monthly

* depending on environmental factors

Fortitude Liquid Iron Fertilisers

Fortitude iron liquids are formulated for easy application, reliable green-up and correction of iron deficiencies. They can be applied all year round and across a wide range of turf and soil conditions. Iron is well known for its ability to provide a rapid visual green-up of turf without significantly stimulating growth as well as being used to harden the turf against disease.

Product Name	Description	Longevity (weeks)	Pack Size (L)	Application rate (L/ha)	Water per hectare (L/ha)	Nutrient Breakdown			Application period
						Nitrogen		Fe (%)	
						Ammoniacal (%)	Ureic (%)		
Fairway 6% Iron + 5.4% S	Correct iron deficiencies and encourage green-up in turf	2-6	20	30-80	300-500	0	2	6	<div><div>J</div><div>F</div><div>M</div><div>A</div><div>M</div><div>J</div><div>J</div><div>A</div><div>S</div><div>O</div><div>N</div><div>D</div></div>
6% Iron + 1% Mn + 5.4% S + Wetter + Dye	Additional manganese and wetting agent to aid iron uptake in the turf	2-6	20	30-80	300-500	0	2	6	<div><div>J</div><div>F</div><div>M</div><div>A</div><div>M</div><div>J</div><div>J</div><div>A</div><div>S</div><div>O</div><div>N</div><div>D</div></div>
Complex 6% Iron	Iron chelated with EDTA for fast and prolonged green-up	2-6	20	30-80	300-500	0	1.5	6	<div><div>J</div><div>F</div><div>M</div><div>A</div><div>M</div><div>J</div><div>J</div><div>A</div><div>S</div><div>O</div><div>N</div><div>D</div></div>
Soluble Iron	Highly soluble iron sulphate that dissolves quickly, even in cold water	2-6	20 kg	8-10 kg	300-400	0	0	20	<div><div>J</div><div>F</div><div>M</div><div>A</div><div>M</div><div>J</div><div>J</div><div>A</div><div>S</div><div>O</div><div>N</div><div>D</div></div>





Outcast Soil Acidifier

For application to amenity turf to gently acidify the top layers of soil. It has been shown that surface soil casts are significantly reduced or even eradicated on lower pH soils. Soil casting causes unsightly turf, poor ball roll, machinery blade damage, weed encroachment and increased turf disease risk.

Applications of Outcast are designed to tackle the soil cast problem. Ideally the first application should be made 1 to 2 weeks before expected problems occur. Allow a week after application to see first signs of effects.

Application:

20 L/ha in 500 L of water.

If problems reoccur a second application of 10 L/ha on 500 L of water can be made.

Unit Size:

2 x 10 L

Application period:

J	F	M	A	M	J
J	A	S	O	N	D

Wetting Agents

Velvit offers a comprehensive range of wetting agents specially designed for turf care to suit a variety of budgets and applications. Don't miss our organic alternative to synthetic wetting agents, YUCCA, on [page 14](#).



BESTWET is a liquid non-ionic wetting agent that has been designed to help prevent the occurrence of localised dry patch (LPD) which prevents healthy grass growth.



RESOLUTE Wetting Agent has exceptional penetrating power, allowing water to move through the soil system more effectively than most other wetting agents on the market.



HORIZON is a cost-effective wetting agent and powerful penetrant that will promote even wetting and reduced water consumption over large areas.



SATUGRAN is a granular non-ionic wetting agent with a zeolite carrier, designed to prevent the occurrence of localised dry patch (LDP).



YUCCA is a natural alternative to synthetic wetters that is completely nonphytotoxic to turfgrass and plants, even when used in hot weather. See [page 14](#) for product details

BESTWET



BESTWET is a liquid non-ionic wetting agent that has been developed for use on amenity grass, golf greens and tees. It is designed to help prevent the occurrence of localised dry patch (LPD) which prevents healthy grass growth. BESTWET will allow water/moisture to move down deeper into the rootzone by lowering the interfacial tension between water and other substrates. It also enables water to spread out laterally throughout the soil profile giving maximum stress relief to all plants and reducing vital plant count loss. Non-scorch. Some surfactants can have powerful emulsifying effects on hydrophobic materials – overuse (too often or at too high a concentration) can potentially strip away important constituents from the plant and lead to a ‘scorching’ effect.

Application:
Monthly

20-40 L/ha in 400-800 L/ha of water

Every 90 days

50 L/ha in 600-800 L/ha of water

Unit Size:

2 x 10 L

Application period:

J	F	M	A	M	J
J	A	S	O	N	D

**Also available as
concentrated tablets**

BESTWET 3 kg irrigation tank tablet

For irrigation or bulk storage tanks.

BESTWET hose-end tablet

Suitable for most hose-end applicator guns
(tablet size: 90 mm x 64 mm)

RESOLUTE



RESOLUTE is a leading solution in the defence, prevention and resolution of localised dry patch (LDP) formation. With an exceptional penetrating power, RESOLUTE allows water to move through the soil system more effectively than most other wetting agents on the market. It works by reducing the interfacial tension between soil substrates and water. RESOLUTE has a long residence time (up to 90 days) and is completely biodegradable, leaving no trace of the wetting agent after this period.

Application:

10-20 L/ha in 300-900 L/ha of water

Unit Size:

2 x 10 L

Application period:

J	F	M	A	M	J
J	A	S	O	N	D

HORIZON



HORIZON is a cost-effective wetting agent and powerful penetrant that will promote even wetting and reduced water consumption over large areas. It provides a residual wetting ability for sustained benefits after application. A monthly application programme is recommended over the growing season. Use HORIZON before, during and after the occurrence of problems to provide protection, conditioning and stress relieving benefits. HORIZON can be used in a tank mix to improve the distribution and efficacy of fertiliser and other treatments. Always conduct a test-mix before use.

Application:

10 L/ha in 200-450 L/ha of water

Unit Size:

2 x 10 L

Application period:

J	F	M	A	M	J
J	A	S	O	N	D

SATUGRAN



SATUGRAN is a granular non-ionic wetting agent with a zeolite carrier, designed to prevent the occurrence of localised dry patch (LDP). Based on our BESTWET technology, SATUGRAN allows water and moisture to move down deeper into the root zone. This is done by lowering the interfacial tension between water and other substrates. It also enables water to spread out laterally throughout the soil profile, giving maximum stress relief to all plants and reducing vital plant count loss.

Benefits include:

- Granular product for easy application
- Prevents localised dry patch (LDP)
- Moves moisture down deeper into the root zone
- Maximum stress relief
- Reduces vital plant count loss

Application Rate:

200-300 kg/ha

Unit Coverage:

660-1,000 m²

Unit Size:

20 kg

Application period:

J	F	M	A	M	J
J	A	S	O	N	D

What is localised dry patch?

LDP is a common problem usually caused by biological processes in the soil, for example Fairy-Ring fungi, breakdown of plant matter, animal sources and critically low soil moisture content. These cause a build-up over time of waxy organic material on soil particles making them strongly hydrophobic. The result is persistent areas that are difficult to wet, leading to patches of turf suffering drought stress.

Granular Fertilisers

Velvit incorporates the latest technologies into a wide range of granular fertilisers for even distribution and steady nutrient release, offering a complete solution for the most demanding requirements of modern turf care. See our granular organic and organo-mineral fertilisers on [pages 5](#) and [6](#).



Designed to release nutrients carefully over time, the Nutrilong range uses a very precise polymer coating technology to provide an extended supply of nutrition to the sward.



COMMAND is a range of homogeneous fertilisers designed to consistently deliver premium nutrition on the most demanding turf areas.



High quality blended fertilisers with perfectly matched and uniform 2-3 mm particles for an even spinner throw distance. The range provides a solution for the full growing season.



Black & Green is a powerful granule containing high levels of both iron and magnesium for maintaining a rich green turf all year round.



Velscape is a complete range of landscaping fertilisers designed for rapid establishment and healthy development of turf, trees and shrubs.



NUTRILONG
V90

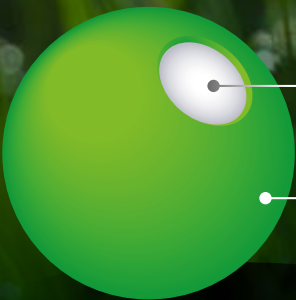
Controlled-Release Fertilisers

3-Month Longevity



Designed to release nutrients carefully over time, this range uses Nutrilong V90 with our precise polymer coating technology to provide an extended supply of nutrition to the sward. The coating minimises losses of nutrients through volatilisation and leaching, providing cost saving and environmental benefits. Nutrilong helps the sward keep an even colour, playability and health without peaks of tenderness, excessive growth or nutrient hunger.

Take a look



UREA

POLYURETHANE SHELL

Precision coated uniform granules.
Controlled nutrient release in response to temperature.
Nitrogen delivered by diffusion when it's needed.

Controlled-Release Fertilisers

3-Month Longevity



Product Name	Description	Longevity (weeks)	Grade (mm)	Cut Height (mm)	Pack Size (kg)	Application rate (kg/ha)	Nutrient Breakdown							Application period
							Nitrogen				P ₂ O ₅ (%)	K ₂ O (%)	MgO (%)	
							Coated (%)	Nitrate (%)	Ammoniacal (%)	Ureic (%)				
17-3-8 + 2% MgO + 5.8% CaO	Contains reduced nutrient inputs to help keep costs low while maintaining impressive results	12	1-2	>6	20	300-400	40	0	1.17	15.83	3	8	2	J F M A M J J A S O N D
20-5-10 + 2% MgO	Spring and summer fertiliser containing three sources of nitrogen	12	1-2	>6	20	300-400	70	0	6	14	5	10	2	J F M A M J J A S O N D
18-8-16 + 3.2% MgO	Increased levels of potassium and magnesium to boost colour and stress-relief	12	1-2	>6	20	300-400	46	0	9.7	8.3	8	16	3.2	J F M A M J J A S O N D
16-3-8 + 2% MgO + 4.9% CaO	Contains reduced nutrient inputs to help keep costs low while maintaining impressive results	12	2-3	>10	20	300-400	40	0	1.17	14.83	3	8	2	J F M A M J J A S O N D
26-6-12 + 1.1% MgO	Contains three sources of nitrogen with good levels of standard-release to provide quick colour	12	2-3	>10	20	300-400	64	4.3	5.2	16.5	6	12	1.1	J F M A M J J A S O N D
18-8-18 + 1.6% MgO	Ideal for a sward that needs a quick boost to its colour and condition	12	2-3	>10	20	300-400	24	6.1	7.6	4.3	8	18	1.6	J F M A M J J A S O N D



Controlled-Release Fertilisers

5-6-Month Longevity



A range of granular fertilisers containing Nutrilong V180 to release nutrients over a period of 5-6 months. Providing sustained nutrition to nourish and maintain the turf for optimum health, performance, and appearance. A long, steady release profile reduces the number of applications required and minimises nutrient loss through volatilisation and leaching, providing both cost and environmental benefits. Can be used throughout the growing season to provide nutrients when the plant needs it.

Product Name	Description	Longevity (weeks)	Grade (mm)	Cut Height (mm)	Pack Size (kg)	Application rate (kg/ha)	Nutrient Breakdown							Application period
							Nitrogen				P O ₅ (%)	K ₂ O (%)	MgO (%)	
							Coated (%)	Nitrate (%)	Ammoniacal (%)	Ureic (%)				
29-4-8 + 1.7% MgO	Spring and summer fertiliser for colour, growth, sward density and plant health. Ideal for short cut turf	24	1-2	>6	20	350-450	83	0	4.9	24.1	4	8	1.7	<div><div>J</div><div>F</div><div>M</div><div>A</div><div>M</div><div>J</div><div>J</div><div>A</div><div>S</div><div>O</div><div>N</div><div>D</div></div>
29-4-9 + 0.9% MgO	Spring and summer fertiliser for colour, growth, sward density and plant health	24	2-3	>10	20	350-450	76	3	3.8	22.2	4	9	0.9	<div><div>J</div><div>F</div><div>M</div><div>A</div><div>M</div><div>J</div><div>J</div><div>A</div><div>S</div><div>O</div><div>N</div><div>D</div></div>



Product characteristic	
Type	Mini-granule
Technology	Controlled release
Pack size:	25kg
Granule dispersal:	8 days (visually dispersed from surface)
Longevity	2-3 months
Typical turf response	7 days (depending on environmental factors)



Directions for use

- Apply to dry foliage
- Watering-in after application aids dispersion and gives a quicker initial effect
- Watering-in after application will minimize foot printing risk
- Avoid applications during frosty or drought conditions
- Applications should be made after aeration programmes such as hollow tining, slitting and/or scarification to prevent granule damage

Product name Oxide Analysis (Elemental Analysis)	Description	Pack size (kg)	Application period	Nutrient Breakdown								Application Rate (g/m2)	Nutrient Levels Applied (kg/ha)			Bag Coverage per m ²
				Nitrogen				Total P	Total K	CaO	MgO		N	P	K	
				Total N (% Coated)	N-NO ₃	N-NH ₄	N-Urea									
20-0-7 +3CaO +3MgO (2-3 months) (20-0-5.8 +2.1Ca +1.8Mg)	Strong initial boost coupled with longevity. Ideal for in-season applications.	25 500	<div><div>JFMA MJ</div><div>JAS O N D</div></div>	20 (25%)	0	0	20	0	7	3	3	20	40.0	0.0	14.0	1,250
												25	50.0	0.0	17.5	1,000
												30	60.0	0.0	21.0	833
												35	70.0	0.0	24.5	714
15-5-15 +5CaO +2MgO (2-3 months) (15-2.2-12.4 +1.2Mg +1.4Ca)	Superior colour response and sward density improvement.	25	<div><div>JFMA MJ</div><div>JAS O N D</div></div>	15 (25%)	0	5	13.7	5	5	2	2	20	30.0	10.0	30.0	1,250
												25	37.5	12.5	37.5	1,000
												30	45.0	15.0	45.0	833
												35	52.5	17.5	52.5	714
21-5-6 +2.5CaO +2.5MgO (2-3 months) (21-2.2-4.3 +2.1Ca +1.5Mg)	Instant colour response and growth boost for long-lasting turf quality.	25	<div><div>JFMA MJ</div><div>JAS O N D</div></div>	21 (25%)	0	6	19.7	5	6	2.5	2.5	20	42.0	10.0	12.0	1,250
												25	52.5	12.5	15.0	1,000
												30	63.0	15.0	18.0	833
												35	73.5	17.5	21.0	714
12-5-20 +5CaO +2MgO (2-3 months) (12-2.2-16.6 +1.4Mg +1.2Ca)	Designed to sustain, strengthen and harden turf through the autumn and winter.	25	<div><div>JFMA MJ</div><div>JAS O N D</div></div>	12 (25%)	0	20	10.7	5	20	2	2	20	24.0	10.0	40.0	1,250
												25	30.0	12.5	50.0	1,000
												30	36.0	15.0	60.0	833
												35	42.0	17.5	70.0	714



COMMAND Homogeneous Fertilisers



1-2
mm

The COMMAND range contains high quality homogeneous granular fertilisers. Each granule of COMMAND contains the full nutrient package for the most even nutrient distribution, ensuring consistency of colour, growth, and performance. Designed for high-value turf areas that are cut short, the 1-2 mm granules provide excellent coverage and quickly settle below the sward. The COMMAND range includes standard-release and slow-release options to fit into any nutrient program, with nutrients being released for up to three months.



Slow Release

Product Name	Description	Longevity (weeks)	Grade (mm)	Cut Height (mm)	Pack Size (kg)	Application rate (kg/ha)	Nutrient Breakdown							Application period
							Nitrogen			P ₂ O ₅ (%)	K ₂ O (%)	MgO (%)	Fe (%)	
							Methylene Urea (%)	Ammoniacal (%)	Ureic (%)					
15-6-15 + 0.4% MgO + 0.5% Fe + MU	Spring and summer application when all major nutrients are required.	12	1-2	3	20	300-400	50	4.1	10.9	6	15	0.4	0.5	<div><div>J</div><div>F</div><div>M</div><div>A</div><div>M</div><div>J</div><div>J</div><div>A</div><div>S</div><div>O</div><div>N</div><div>D</div></div>
16-0-16 + 2% MgO + 1% Fe + TE + MU	Spring and summer fertiliser when phosphorous is not required	12	1-2	3	20	300-400	50	5.7	10.3	0	16	2	1	<div><div>J</div><div>F</div><div>M</div><div>A</div><div>M</div><div>J</div><div>J</div><div>A</div><div>S</div><div>O</div><div>N</div><div>D</div></div>
13-0-26 + 1% Fe + TE + MU	Ideal for applying early or late in the growing season	12	1-2	3	20	300-400	50	2.6	10.4	0	26	0	1	<div><div>J</div><div>F</div><div>M</div><div>A</div><div>M</div><div>J</div><div>J</div><div>A</div><div>S</div><div>O</div><div>N</div><div>D</div></div>
16-12-8 + Zn + TE + MU	Ideal for seeding, overseeding, and when laying turf	12	1-2	3	20	300-400	50	4.5	11.5	12	8	0	0	<div><div>J</div><div>F</div><div>M</div><div>A</div><div>M</div><div>J</div><div>J</div><div>A</div><div>S</div><div>O</div><div>N</div><div>D</div></div>
8-13-12 + 1.6% MgO + Mycorrhizal inoculant + MU	Seeding fertiliser with added mycorrhizal inoculant for improved root development and establishment	12	1-2	3	20	300-400	50	4.6	3.4	13	12	1.6	0	<div><div>J</div><div>F</div><div>M</div><div>A</div><div>M</div><div>J</div><div>J</div><div>A</div><div>S</div><div>O</div><div>N</div><div>D</div></div>

Standard Release

Product Name	Description	Longevity (weeks)	Grade (mm)	Cut Height (mm)	Pack Size (kg)	Application rate (kg/ha)	Nutrient Breakdown						Application period
							Nitrogen		P ₂ O ₅ (%)	K ₂ O (%)	MgO (%)	Fe (%)	
							Ammoniacal (%)	Ureic (%)					
Cold Start NEW 10-5-5 + 2.3% MgO + 5% Fe	Designed to kickstart your turf's early-season vibrancy. Perfectly suited for fine turf areas such as greens, tees, and fine lawns	4-6	1-2	3	20	250-350	7.7	2.3	5	5	2.3	5	<div><div>JFMA MJ</div><div>JASOND</div></div>
14-2-8 + 1.2% MgO + 2% Fe	Spring and summer fertiliser with balanced NPK ratio	4-6	1-2	3	20	250-350	10.2	3.8	2	8	1.2	2	<div><div>JFMA MJ</div><div>JASOND</div></div>
4-0-4 + 9% Fe	A turf hardener suitable for application at any time of the year, when lower levels of nutrients are required	4-6	1-2	3	20	250-350	4	0	0	4	0	9	<div><div>JFMA MJ</div><div>JASOND</div></div>
7-0-14 + 2% MgO + 4% Fe	Perfect autumn fertiliser with iron and magnesium. Additional seaweed and zeolites to improve soil structure and nutrient uptake	4-6	1-2	3	20	250-350	5.4	1.6	0	14	2	4	<div><div>JFMA MJ</div><div>JASOND</div></div>
12-10-20 + 4% MgO	Use where phosphate has become a limiting factor to turf health and root development	4-6	1-2	3	20	250-350	3.5	8.5	10	20	4	0	<div><div>JFMA MJ</div><div>JASOND</div></div>



Velvit Essential



Velvit Essential products are perfect for maintaining professional, high-quality results using cost effective applications. Supplying all the nutrients required for the full growing season, the Velvit Essential range is ideal for large areas where the grass is cut above 10 mm.

Black & Green



12% Fe + 5% MgO (1-2 mm)

Black & Green is a powerful granule containing elevated levels of both iron and magnesium. The high iron content causes moss blackening while the additional magnesium supports chlorophyll production to aid with green up, even at standard application rates.

Application Rate: 250-350 kg/ha **Turf height:** >3 mm **Unit Size:** 20 kg **Application period:**

J	F	M	A	M	J
J	A	S	O	N	D

Product Name	Description	Longevity (weeks)	Grade (mm)	Cut Height (mm)	Pack Size (kg)	Application rate (kg/ha)	Nutrient Breakdown				Application period
							Nitrogen		P ₂ O ₅ (%)	K ₂ O (%)	
							Ammoniacal (%)	Ureic (%)			
14-3-6	Spring and summer fertiliser containing readily available nutrients for colour, growth, sward density and plant health	6	2-3	10	20	250-350	1.17	12.83	3	6	<div><div>J</div><div>F</div><div>M</div><div>A</div><div>M</div><div>J</div><div>J</div><div>A</div><div>S</div><div>O</div><div>N</div><div>D</div></div>
8-4-16	Ideal for autumn applications or where a low N input is implemented	6	2-3	10	20	250-350	1.57	6.43	4	16	<div><div>J</div><div>F</div><div>M</div><div>A</div><div>M</div><div>J</div><div>J</div><div>A</div><div>S</div><div>O</div><div>N</div><div>D</div></div>
9-16-12	Ideal for pre-seed, pre-turf or over-seeding applications	6	2-3	10	20	250-350	9	0	16	12	<div><div>J</div><div>F</div><div>M</div><div>A</div><div>M</div><div>J</div><div>J</div><div>A</div><div>S</div><div>O</div><div>N</div><div>D</div></div>





Velscape Landscaping Fertiliser

2-3 mm

Velscape fertilisers are designed to ensure the rapid establishment and healthy development of turf, trees and shrubs. The carefully formulated range of landscaping fertilisers will help the landscaper match the product to the requirements of the job, resulting in less wastage and greener, healthier plants.

Product Name	Description	Longevity (weeks)	Grade (mm)	Cut Height (mm)	Pack Size (kg)	Application rate (kg/ha)	Nutrient Breakdown						Application period
							Nitrogen			P O ₅ (%)	K ₂ O (%)	MgO (%)	
							Coated (%)	Ammoniacal (%)	Ureic (%)				
6-9-6 Preseed	Pre-seed formulation to encourage root establishment and growth of newly seeded areas	6	2-3	10	20	250-350	0	6	0	9	6	0	J F M A M J J A S O N D
12-6-6 Spring Summer	Spring and summer formulation to encourage green-up and growth	6	2-3	10	20	250-350	0	12	0	6	6	0	J F M A M J J A S O N D
4-19-10 + 8% MgO Slow Release	Controlled release feed for trees and shrubs developed to feed nutrient for 5-6 months	24	2-3	10	20	350-450	100	0	4	19	10	8	J F M A M J J A S O N D
7-7-7 All Season	All season multipurpose fertiliser for use on turf, border plants and vegetables	6	2-3	10	20	250-350	0	2.74	4.26	7	7	0	J F M A M J J A S O N D
4-12-12 Autumn/Winter	Autumn and winter fertiliser to strengthen the plant in colder months reducing risk of disease	6	2-3	10	20	250-350	0	4	0	12	12	0	J F M A M J J A S O N D
15-5-10 30% controlled-release	All season controlled-release formulation, ideal for use throughout the main growing season	12	2-3	10	20	300-400	30	1.95	13.05	5	10	0	J F M A M J J A S O N D

Alternative Products

Ice Melt

Ice Melt is a fast acting, free flowing, easy to use granular compound that eliminates ice and snow without any harmful effects. Unlike rock salt, Ice Melt will not leave scratch markings or staining to flooring and will still melt ice in temperatures exceeding -11°C. Ice Melt is non-hazardous, contains plant nutrients and is 100% biodegradable.

Ice Melt is non-corrosive and non-staining, it can be used for many different applications, including:

- Driveways
- Pathways
- Car Parks
- Shopping Centres
- Trading Estates
- Pedestrian Bridges

Application:

Remove heavy deposits of snow or slush and spread Ice Melt evenly.

Unit Size:

20 kg

Application period:

When snow or ice is expected or present.



Bespoke fertiliser manufacturing

We bring together bespoke manufacturing, advanced ingredients and extensive knowledge of fertiliser formulation to provide the right product for you, in the right place, at the right time.

- ✓ Own brand labelling and packaging
- ✓ Bespoke product formulation
- ✓ Minimal lead time
- ✓ Runs of any size
- ✓ Technical support and testing services
- ✓ Save money with focused fertiliser design



Spreader Settings and Info

Granule size guide

Mini Granular Fertiliser: 0.7-1.9 mm 150 SGN



Ideal for greens, lawns and any close-cut turf. Ensures the highest coverage and uniformity. Effectively penetrates the sward. Suitable for grass cut above 3 mm or 6 mm for controlled release.

Graded Fertiliser: 1.9-3.4 mm 250 SGN



More economical than Mini and still provides effective coverage. Ideal for lawns, parks, and less technical turf applications. Suitable for grass cut to 10 mm or above.

Important analysis information

Oxide values

Where applicable, nutrient analysis values are quoted as the oxide value, even when not explicitly stated as such, for example P is quoted as P_2O_5 .

W/V

All liquid analysis values are quoted as w/v (weight/volume) rather than w/w (weight/weight). Please get in touch if you need any help or advice with any aspect of our products.

Typical Areas of Use			
Type of Area		Dimensions	Total Area
Golf Green		N/A	365-640 m ² 400-700 yd ²
Football Pitch	Small	91.4 x 46.0 m 100 x 50 yds	4,204 m ² 5,000 yds ²
	Large	119 x 91.4 m 130 x 100 yds	10,877 m ² 13,000 yds ²
Tennis Court	Small	23.8 x 11 m 26 x 12 yds	262 m ² 312 yds ²
	Large	36.6 x 18.3 m 40 x 20 yds	670 m ² 800 yds ²
Hockey Pitch	Small	91.4 x 50 m 100 x 55 yds	4,570 m ² 5,500 yds ²
	Large	91.4 x 55 m 100 x 60 yds	5,027 m ² 6,000 yds ²
Gaelic Athletic Association (GAA)	Small	130 x 80 m 142 x 87 yds	10,400 m ² 12,354 yds ²
	Large	145 x 90 m 158 x 98 yds	13,050 m ² 15,484 yds ²
Bowling Green		38.4 x 38.4 m 42 x 42 yds	1,475 m ² 1,764 yds ²
Lacrosse		137 x 73 m 150 x 80 yds	10,001 m ² 12,000 yds ²
Cricket Square		27.4 x 27.4 m 30 x 30 yds	752 m ² 900 yds ²
Rugby Pitch		100 x 69 m 110 x 75 yds	6,900 m ² 8,250 yds ²
Croquet		32 x 26 m 35 x 28 yds	832 m ² 980 yds ²

Spreader Settings		Single Pass					
		Granule Size	20 g/m ²	25 g/m ²	30 g/m ²	35 g/m ²	40 g/m ²
Homogeneous	Standard Release	1-2 mm	4, M	4, N	4, O ^{1/2}	4, P ^{1/2}	4, Q ^{1/2}
		2-3 mm	4, 0	4, P	4, Q	4, S	4, T ^{1/2}
Blended	Standard Release	2-3 mm	-	4, Q	4, R ^{1/2}	4, T ^{1/2}	4, V
Controlled Release	3 Month Controlled Release	1-2 mm	4, N	4, O	4, P	4, R	4, S
		2-3 mm	-	4, Q	4, R ^{1/2}	4, T ^{1/2}	4, V
	5-6 Month Controlled Release	1-2 mm	4, N	4, O	4, P	4, R	4, S
		2-3 mm	-	4, Q	4, R ^{1/2}	4, T ^{1/2}	4, V

Spreader setting are for guidance only based on Accupro SR-2000, actual rates may vary according to variations in machine, technique and weather conditions.

Golf grass seed mixtures



A5

Cricket, Tennis and Tees

60% ESCAPADE (Perennial Ryegrass)
40% CABRIO (Ultrafine Perennial Ryegrass)

The original and still the best, A5 is unsurpassed for fineness of leaf and overall quality of varieties.

Escapade sports a 7.9 fineness of leaf score when mown at 10-15mm and is the perfect companion for Cabrio, which is rated 8.5 as the highest fineness score on the 2024 BSPB list for summer sports.

Cabrio is one of the top perennial ryegrass variety for fineness of leaf when mown at 5-7mm, scoring 8.0 and making A5 a fine mixture under pressure.

- Contains Cabrio, the most fine leaved perennial ryegrass currently available
- Quick to establish
- Hard wearing
- High density ground cover
- Superior rooting

Sowing rate:
35g/m² (350kg/ha)

Overseeding rate:
20g/m² (200kg/ha)

Cutting height:
Down to 4mm

“Our end-of-season renovation is weather dependent. We spike to 100mm and then scarify four ways. We then spike to 25mm, apply pre-seed fertiliser, top dress and then drag mat and brush.”
Ian Morris Head Groundsman, Ellesmere College

More Grade 'A' golf mixtures	Sowing rate	Overseeding rate	Cutting height
A8 Ultrafine Ryegreens	20g/m ² (200kg/ha)	10-15g/m ² (100-150kg/ha)	Down to 3mm
A10 Golf Tees and Divot Repairs	35g/m ² (350kg/ha)	20g/m ² (200kg/ha)	Down to 6-7mm
A11 Golf Greens	35g/m ² (350kg/ha)	20g/m ² (200kg/ha)	Down to 3mm
A12 Golf Fairways	35g/m ² (350kg/ha)	20g/m ² (200kg/ha)	Down to 15mm
A13 Golf Roughs and Habitat Areas	20g/m ² (200kg/ha)	n/a	As desired
A27 Golf All Fescue	35g/m ² (350kg/ha)	20g/m ² (200kg/ha)	Down to 5mm for greens, 15mm for fairways and tees
A28 Ultrafine Ryegolf	35g/m ² (350kg/ha)	20g/m ² (200kg/ha)	Down to 6-7mm
A29 Cold Divot Mix	35g/m ² (350kg/ha)	20g/m ² (200kg/ha)	n/a
A31 Supreme Tees	10-15g/m ² (100-150kg/ha)	n/a	Down to 3mm
A32 Ecological Roughs Mixture	20g/m ² (200kg/ha)	n/a	As desired
A33 Maxi Bent Golf Greens	20g/m ² (200kg/ha)	10-15g/m ² (100-150kg/ha)	Down to 3mm
A34 Fescue Fairways and Surrounds	35g/m ² (350kg/ha)	20g/m ² (200kg/ha)	Down to 5mm



Variety matters: Choose the UK's top creeping bents

When Germinal introduced 007 DSB to the UK, we were questioned by greenkeepers and agronomists who believed that all creeping bentgrasses required high inputs (especially nitrogen (N) and water) to succeed.

But the success and simple management of 007 DSB and more recently top-rated Tour Pro (GDE) have shattered the input concerns associated with modern creeping bentgrasses. Adopters in the UK have reported significantly lower nitrogen and water requirements than anticipated, with excellent turf quality maintained using just 50kg of N per hectare. These qualities make them well-suited for typical UK greenkeeping practices.

Greenkeepers can leverage the high shoot density of 007 DSB and Tour Pro (GDE) without concerns about encouraging *Poa annua*. Both varieties rate strongly in National Turfgrass Evaluation Program (NTEP) trials for resistance to Fusarium, Anthracnose and Dollar Spot. And Tour Pro (GDE) is even more tolerant of drought conditions – helping greenkeepers maintain quality putting surfaces while placing *Poa annua* under significant stress.

While the tide has turned and many UK greenkeepers are now using these exceptional creeping bentgrass varieties to outcompete *Poa annua* and develop disease-free greens with exceptional playability, pretenders have arrived. But it's crucial to recognise that the strength of these varieties lies in their ability to thrive in conditions unfavourable to *Poa annua*. Older, lower-rated varieties demand higher inputs, inadvertently benefiting *Poa annua*. So, when choosing seed, remember the variety matters and talk to your local Germinal representative.



ForeFront Greens

15% ABERREGAL (Browntop Bent)
20% ABERROYAL (Browntop Bent)
25% MUSKET (Browntop Bent)
20% 007 DSB (Creeping Bent)
20% TOUR PRO (GDE) (Creeping Bent)

Combining the proven performance of our AberMajesty browntop bentgrass blend with the best creeping bents ensures ForeFront Greens delivers the highest levels of disease and stress resistance. With excellent shoot density, fineness of leaf and unrivalled winter and summer greenness, ForeFront Greens is the ideal mixture for better greens.

- Tour Pro (GDE), the UK's top-rated creeping bent
- Suitable for soil or sand-based greens
- Enhanced resistance to Red Thread and Fusarium
- Superb stress resistance
- Impressive year-round green colour
- Excellent shoot density and fineness of leaf

Sowing rate:

8-12g/m²
(80 to 120kg/ha)

Overseeding rate:

5-8g/m²
(50-80kg/ha)

Cutting height:

Down to 3mm

"This is to try and get finer and more disease-resistant grass species into our greens that can help out-compete Poa annua and tie in with my sustainable management approach."
Iain Marshall Head Greenkeeper, West Lothian Golf Club

Tour Pro (GDE)

Tour Pro (GDE) is the latest creeping bent to join Germinal's bentgrass portfolio.

After excelling in the National Turfgrass Evaluation Program (NTEP) in the United States, Tour Pro (GDE) is now the highest-rated creeping bentgrass on table G1 of the 2024 BSPB list.

The low input requirement mirrors 007 DSB, enabling greenkeepers to outcompete Poa annua by using management strategies that place Poa under stress. This allows the natural attributes of Tour Pro (GDE) and 007 DSB to gain the upper hand and dominate the sward.

Tour Leader Creeping Bent Blend

50% 007 DSB (Creeping Bent)
50% TOUR PRO (GDE) (Creeping Bent)

Tour Leader is a landmark mixture in the evolution of creeping bentgrass products. This exceptional blend sets the bar high with unrivalled performance, seasonal adaptability, high disease resistance and vivid colour retention.

Combining 007 DSB and Tour Pro (GDE), the number-one-rated creeping bent for 2024, this mixture is an all-round leader.

- Tour Pro (GDE), the UK's top-rated creeping bent
- Superb Dollar Spot, Anthracnose, Fusarium and Brown Patch resistance
- Adaptable to all UK climates
- Tolerant of close mowing regimes (as low as 3mm)
- Low seedling mortality rates vs. browntops and Fescues, resulting in faster species conversion away from Poa annua
- Tolerant of drought conditions
- Sustainable input requirement: UK users average 92kg N per annum with reduced chemical usage

007 DSB Creeping Bent

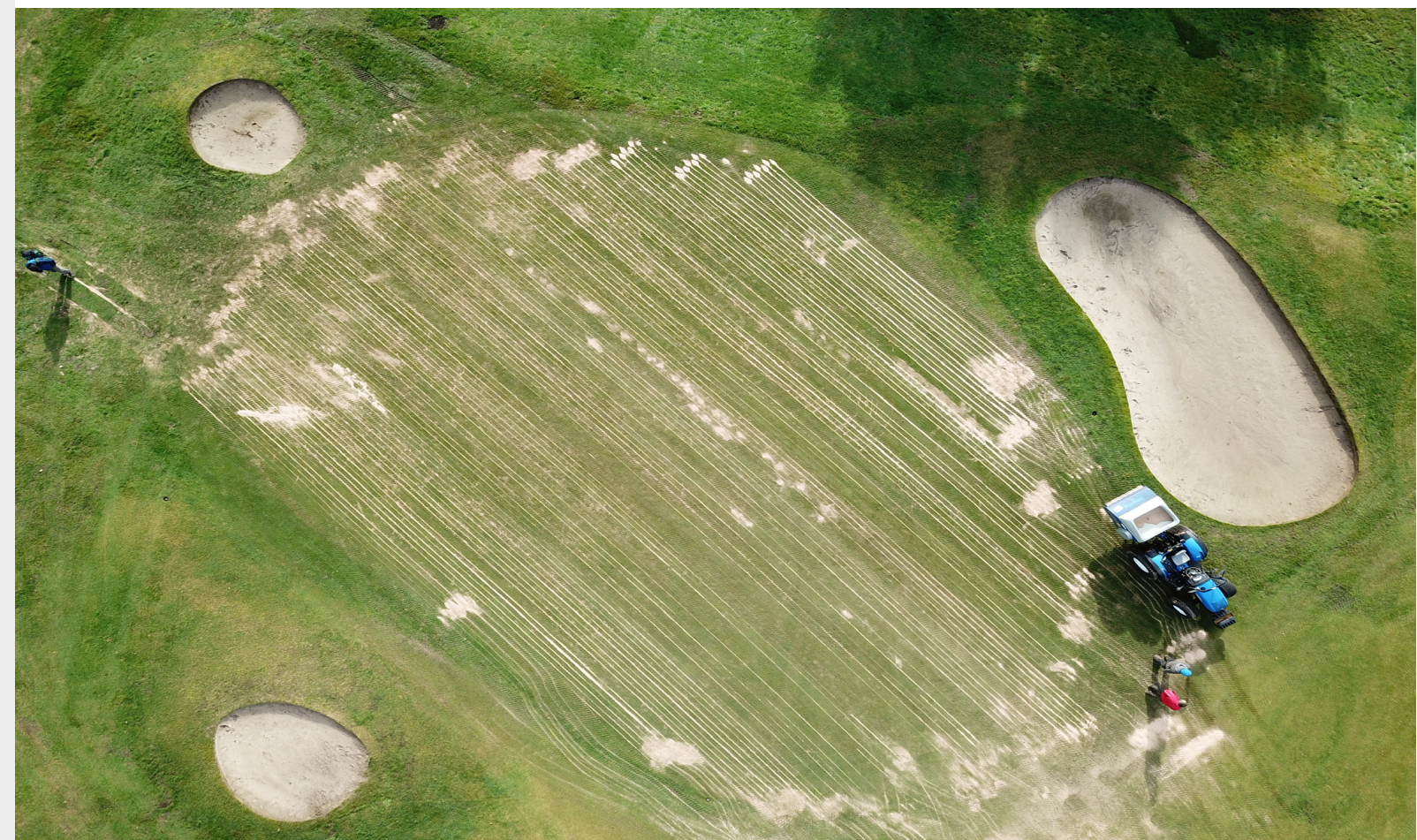
007 DSB has an unrivalled reputation worldwide

Bred in the US using 24 parent plants, this genetic diversity ensures good disease resistance, especially against Anthracnose, Fusarium, Snow Mould and Dollar Spot.

This most crucial of traits is coupled with an extremely prostrate growth habit, high shoot density and good wear tolerance in a wide range of conditions, including cold climates and drought susceptible regions. 007 DSB has won plaudits wherever it has been used, including Ryder Cup and US Open courses, and the PGA Masters at Wentworth.

"The reduced nutrition that's required, the fact that 007 looks after itself, and especially with the ups and downs of the weather – it can handle variations in temperatures."

Phil Dodds Golf Course Manager, Otley Golf Club



Climate smart greens

By pairing the drought tolerance and wear resistance of Tour Pro (GDE) with the cold weather tolerance and sustainability of 007 DSB, we have created a mixture with genetic diversity to keep greens in good condition all year round, irrespective of what the weather might throw at them.

With the UK’s variable weather patterns ensuring no two seasons are the same, flexibility makes Tour Leader the ideal overseeding and reseeding mixture for modern greens.

Sowing rate:
 8-12g/m²
 (80 to 120kg/ha)

Overseeding rate:
 5-8g/m²
 (50-80kg/ha)

Cutting height:
 Down to 2.5mm

Creeping Bent	Shoot density	Visual merit	Mean	Fineness of leaf	Resistance to red thread	Winter greenness	Summer greenness	UK agent
Tour Pro (GDE)	6.6	7	6.8	6.6		5.4	5.3	G
Riptide	6.6	6.8	6.7	6.7		5.8	5.0	ICL
007 DSB	6.3	6.5	6.4	6.3	5.9	6.9	5.4	G

Full results can found in Turfgrass Seed 2024 table G1



AberMajesty Browntop Bent Blend

20% ABERROYAL (Browntop Bent)
 35% ABERREGAL (Browntop Bent)
 45% MUSKET (Browntop Bent)

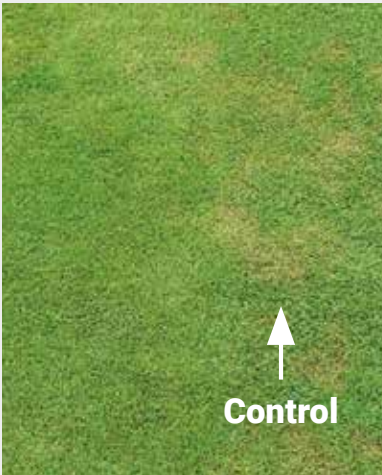
A combination of proven performers AberRoyal and AberRegal and the exciting new variety, Muskel. The increased genetic diversity makes AberMajesty the choice for greenkeepers looking to manage a blend of browntop bentgrasses that offers the prerequisite requirement of good shoot density and fineness of leaf but with vital added resistance to Fusarium.

- Combined genetic traits of three winning varieties
- Natural Fusarium resistance varieties
- Contains UK bred varieties for UK golf greens
- Excellent shoot density
- Very fine leaved

Sowing rate:
 8-12g/m²
 (80 to 120kg/ha)

Overseeding rate:
 5-8g/m²
 (50-80kg/ha)

Cutting height:
 Down to 3mm



AberRegal in Fusarium resistance trials

Breeding to maximise Fusarium resistance

Recent trials carried out by the STRI on behalf of Germinal suggest that overseeding golf greens with browntop bentgrass cultivars such as AberRegal might offer improved resistance against microdochium patch disease, better known as Fusarium patch disease.

Breeding trials at the Institute of Biological, Environmental and Rural Sciences (IBERS) in Aberystwyth suggested that AberRegal gives above average resistance to Fusarium. The aim of the STRI trial was therefore to examine the susceptibility and resistance of eight browntop bentgrass cultivars to Fusarium under a close mowing regime.

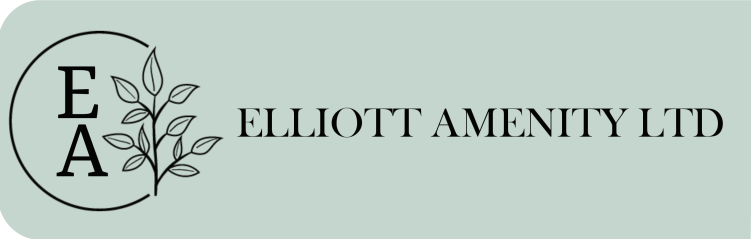
The trial showed that AberRegal offers above average resistance to Fusarium and can therefore increase the effectiveness of, and/or reduce the requirement for, a full programme of fungicide applications. A good percentage of bentgrasses such as AberRegal will therefore provide a firebreak between areas of Poa annua, thereby preventing patches of infection from joining together.

Grade 'A' sport mixtures

A20 Premier Ryesport

30% EUROPITCH (Perennial Ryegrass)
30% EUROSPOUT (Perennial Ryegrass)
10% CHLOE (Perennial Ryegrass)
30% EUROCORDUS (Perennial Ryegrass)

- High shoot density
- Dark green in winter and summer
- A combination of fineness of leaf and a good cleanness of cut make a sward that is exceptionally easy to mow stripes
- Good disease resistance
- Good post winter recovery



More Grade 'A' sport mixtures	Sowing rate	Overseeding rate	Cutting height
A1 Professional Bowls	35g/m ² (350kg/ha)	20g/m ² (200kg/ha)	Down to 4mm
A5 Cricket, Tennis and Tees	35g/m ² (350kg/ha)	20g/m ² (200kg/ha)	Down to 4mm
A7 'Olympic Quality' Sport Ground	35g/m ² (350kg/ha)	20g/m ² (200kg/ha)	Down to 10mm
A9 General Outfield	35g/m ² (350kg/ha)	20g/m ² (200kg/ha)	Down to 20mm
A14 Racecourse and Polo Grounds	35g/m ² (350kg/ha)	20g/m ² (200kg/ha)	Down to 20mm
A999 Rescue	45g/m ² (450kg/ha)	30g/m ² (300kg/ha)	Down to 35mm
A31 Supreme Tees	10-15g/m ² (100-150kg/ha)	n/a	Down to 3mm
A30 Rapid Sports Renovator Plus	35g/m ² (350kg/ha)	20g/m ² (200kg/ha)	n/a

Line Marking Paint

WhiteBright "White Paint on Green Grass"



Award Winning Ready-to-use Paints
Cost-saving, Convenience, Conservation

Why use our paints:

- Ready-to-use - No measuring, no mixing, no mess
- Time saving - Quick start, fewer re-fills, faster finish
- Cost savings per pitch - Less paint, no added water...it all adds up
- Great visuals - Crisp lines, bright white or vibrant colours
- Fast drying - Rainfast in as little as 20 minutes
- Long lasting - Highly rain resistant once dry, no 'ghosting'
- Flowability - High atomisation through unique nozzles
- Flexibility - All surfaces...natural grass, hard and synthetic surfaces*
- Lighter load - No heavy tank of dilutable to cause compaction



Hire or purchase - robotic line marking

New commercial turfcare era starts here

The best turf shines in the real season. That's the motivation driving the RM21 to redefine turf caring for sports fields or sod farms. Designed with pure electric drive for quiet, oil-free performance, it's built with a smart control system and a large-capacity battery, giving you all the eco-friendly efficiency you need to let your landscaping business roll.



Accurate and efficient mowing

Cut grass with centimeter-level positioning accuracy, giving efficiency a boost while reducing the risk of mowing lapse, mowing task omission or repetitive working.



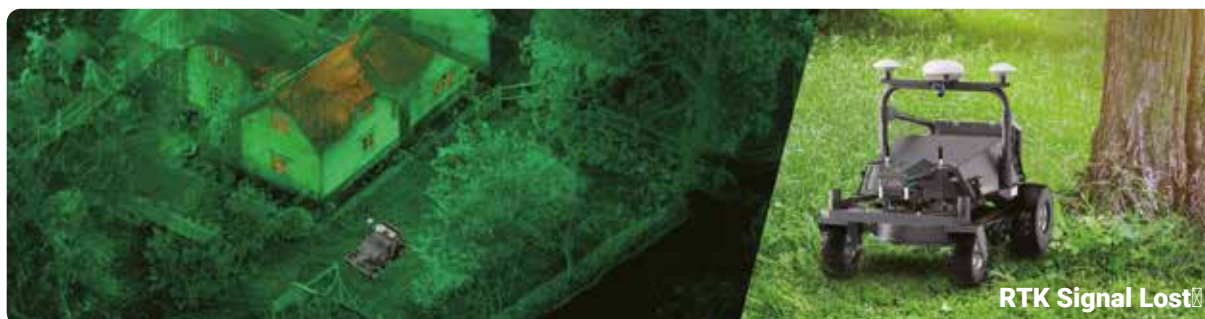
One-click multi-field management

Support mowing multiple zones in a single task to save your valuable time & effort in managing your property, helping you invest more time on critical tasks.



Smart path planning

Plan optimal mowing paths automatically with built-in precision algorithms, relieving your anxiety when working on the labor-intensive mowing tasks.



Automatic mowing on complex terrain

Leverage LiDAR tech to create a 3D map of the terrain, making it a breeze to safely mow in challenging areas such as under trees or around objects.

Protection meets innovation



360° real-time object detection

Leverage LiDAR to detect surrounding objects and eliminate blind spots, giving you an extra layer of safety through rapid obstacle avoidance and collision prevention.



Comprehensive protection

Safeguard itself with collision bumpers, lift protection and raining monitoring, meeting your need for a safe and flawless mowing operation.



No more battery anxiety

Return automatically to the charging station for auto-recharging when the battery life is low, reducing the need for manual intervention and improving working efficiency.



Easier and smarter mowing

Offer the convenience of app control, allowing you to manage your mower or schedule in real time even when you're out of town.



No more worry about slopes

Climb slopes or inclines of up to 20° without getting stuck, ensuring a consistently smooth ride over tricky terrain.

Fungicides

Ascernity™

A broad spectrum foliar fungicide with both contact and systemic properties for moderate control of Microdochium Patch and a reduction in levels of Dollar Spot and Anthracnose.

- Ascernity stays evenly distributed through the leaf.
- The balanced systemicity of Ascernity ensures the whole plant leaf remains protected for longer – with sustained disease control.
- Ascernity effectively blocks the disease cell's ability to absorb the plant's sugars – quickly stopping further development and halting disease spread.
- Two actives and two different modes of action targets disease at different stages for greater flexibility in application timing and control.

Contains: 23.6 g/l Benzovindiflupyr (SOLATENOL) 78.9 g/l Difenconazole
MAPP No: 19544
Pack size: 3L
Pack coverage: 10,000m²



Application Rate

Equipment	Ascernity	Water Volume	Area
Boom Sprayer	3L	125-500L	1ha

Dedicate®

A contact and systemic fungicide with eradicator and preventative activity against most major turf diseases.

- Controls Microdochium Patch, Red Thread, Dollar Spot, Anthracnose, Leaf Spot and Rust in amenity turf.
- Combination of Trifloxystrobin and Tebuconazole offers both contact and systemic activity.
- Wide window of application over the season – can be used any time of year.
- Low application rate gives cost effective control.
- Ideal as part of an integrated disease management programme.

Contains: 200g/l (18.2% w/w) Tebuconazole and 100g/l (9.1%) Trifloxystrobin
MAPP No: 17003
Pack size: 250ml
Pack coverage: 2,500m²



Application Rate

Equipment	Ascernity	Water Volume	Area
Boom Sprayer	3L	400-500L	1ha
Knapsack Sprayer	50ml	20-25L	500m²

Eland®

A broad spectrum fungicide for the control of Microdochium Patch, Red Thread, Dollar Spot and other key diseases in managed amenity turf.

- Can be used all year round.
- Increased persistence, wide spectrum of activity.
- Activity with long term efficacy.
- Rainfast 1 hour after application.
- Low risk of Phytotoxicity.

Contains: 200g/kg (20% w/w) Pyraclostrobin
MAPP No: 19468
Pack size: 250g Bottle
Pack coverage: 2,000m²



Application Rate

Equipment	Ascernity	Water Volume	Area
Boom Sprayer	1.25kg	200L	1ha
Knapsack Sprayer	62.5g	25L	500m²

Exteris Stressgard®

A systemic, foliar fungicide formulated to manage Microdochium Patch and Dollar Spot.

- Excellent control of of Microdochium Patch, Dollar Spot, Leaf Spot and Anthracnose.
- Provides early curative and preventative activity.
- Improves turf quality and playability.
- Drought stress reduction.
- Enhances turf colour.

Contains: 12.5g/l Fluopyram 12.5g/l Trifloxystrobin
MAPP No: 17825
Pack size: 5L
Pack coverage: 5,000m²



Application Rate

Equipment	Ascernity	Water Volume	Area
Boom Sprayer	10L	200-600L	1ha
Knapsack Sprayer	500ml	10-30L	500m²

Instrata® Elite

A broad spectrum foliar fungicide with both systemic and contact activity against most major turf diseases.

- Excellent protection from Microdochium Patch in high-risk periods September – November.
- In high-risk situations combines systemic and contact action.
- Dual mode of action – preventative and early curative activity.
- Rainfast in 30 minutes.
- Use all year round.

Contains: 80.3 g/l Difenconazole plus 80.3 g/l Fludioxonil
MAPP No: 17976
Pack sizes: 1L and 3L
Pack coverage: 3,333m² and 1ha



Application Rate

Equipment	Ascernity	Water Volume	Area
Boom Sprayer	3L	125-500L	1ha
Knapsack Sprayer	30ml	3-5L	100m²

Heritage®

A systemic strobilurin fungicide for the control of a wide range of turf diseases.

- Broad spectrum systemic activity.
- Systemic activity taken up by foliage and roots.
- Control of fairy rings – with wetting agent.

Contains: 500 g/kg Azoxystrobin
MAPP No: 13536
Pack sizes: 100g and 500g
Pack coverage: 2,000 m² and 1ha



Application Rate

Equipment	Ascernity	Water Volume	Area
Boom Sprayer	3L	125-500L	1ha
Knapsack Sprayer	30ml	3-5L	100m²

Medallion® TL

A contact fungicide providing a protection shield to control spores prior to the disease entering foliage.

- Activity on leaf, in thatch and soil surface.
- Unique mode of action – causing spores to explode.
- Ideal tank mix partner for other products.
- Bio-inspired contact activity.
- Ideal end of season cold weather protection.

Contains: 125g/l Fludioxonil
MAPP No: 15287
Pack sizes: 1L and 3L
Pack coverage: 3,333m² & 1ha



Application Rate

Equipment	Ascernity	Water Volume	Area
Boom Sprayer	3L	125-500L	1ha
Knapsack Sprayer	30ml	3-5L	100m²

Plazma®

A powerful, high performance, broad spectrum fungicide for the control of disease in managed amenity turf.

- Easy to use Plazma formulation can be used in boom sprayer or knapsack.
- Contact, systemic and translaminar mode of action.
- Rainfast in 1 hour.
- Easy to use liquid formulation.
- For use of foliar and soil diseases.

Contains: 250g/l Azoxystrobin
MAPP No: 19416
Pack size: 1L
Pack coverage: 1ha



Application Rate

Equipment	Ascernity	Water Volume	Area
Boom Sprayer	3L	500L	1ha
Knapsack Sprayer	20ml	10L	200m²



ELLIOTTA MENITY LTD

elliottamenity.com