

T24N - R20E

3A

SECTION 13  
CRAIG COUNTY, OKLAHOMA

SEE  
PAGE  
3

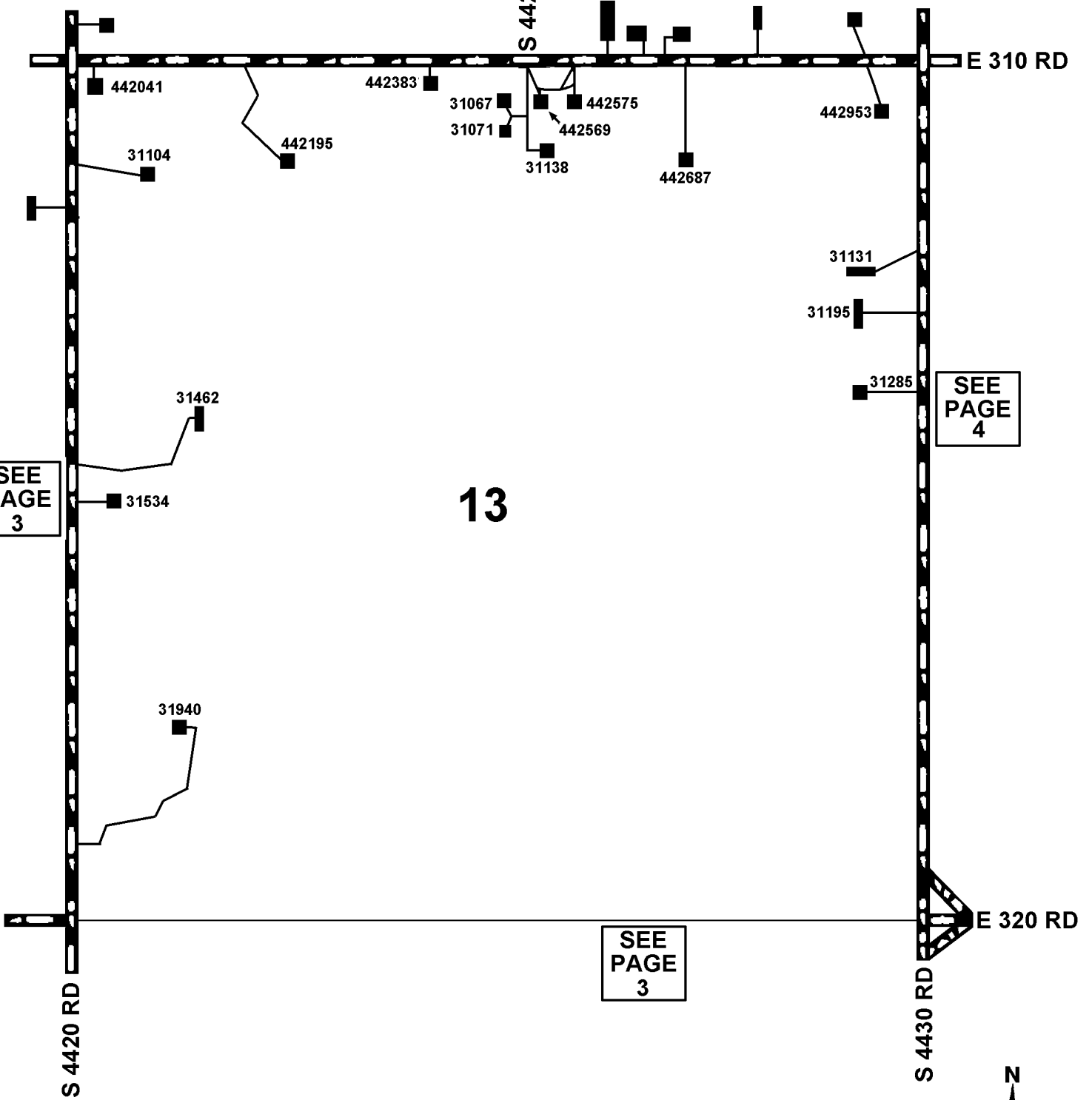
S 4425 DR

SEE  
PAGE  
4

13

SEE  
PAGE  
3

SEE  
PAGE  
3



2-1-1993  
REVISED 4-29-2015  
CRAIG COUNTY E-911

