

Tryphena Jenkins

Clinical Social Work/Therapist, LCSW

✓ Verified by Psychology Today

Let's Connect



(318) 771-7529



Email me

My Practice at a Glance



Available both in-person and online



Turning Point Counseling Services
3020 Knight Street
Shreveport, LA 71105
(318) 771-7529

Email me

Share



In response to COVID 19 we are providing PPP gear for in office visits. Face mask are made available for each session.



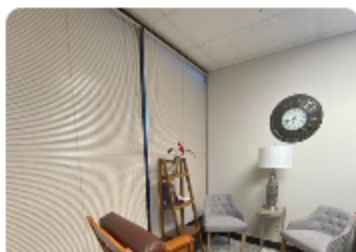
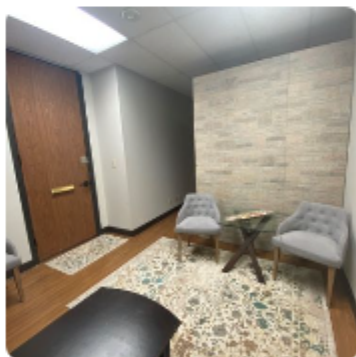
I specialize in Anxiety, Depression and Marital and Premarital >



\$115 Per Session, I accept insurance >



I see individuals, couples and families >



TAKES MEDICAID - MENTAL HEALTH COUNSELING

Jenkins Counseling Services

Strategic Plan 2021-2024

Our Mission

Jenkins Counseling Services uses a holistic team approach committed to empowering individuals and families by identifying issues, magnifying strengths, and setting goals to work towards reaching positive outcomes and recovery.

Our Vision

Jenkins Counseling Services is committed to empowering individuals and families.

Our Values

- Accountability
- Flexibility
- Integrity
- Respect
- Transparency

Our Priorities

- Ensure the safety, quality and effectiveness of services resulting in positive client outcomes
- Ensure the future financial viability of services
- Recruit and retain culturally competent and professional clinical staff



1513 Line Avenue, Suite 225

Shreveport, Louisiana 71101

Business Hours: 9am - 5pm

(318)754-3890

(318)658-9012

jenkinscounseling@jcservices.org

Short Term Goals

- Improved client outcomes as indicated in treatment plans
- Provide expedited access to program services
- Provide satisfactory services to clients and other stakeholders
- Maintain employee retention
- Maintain financial solvency
- Expand program services
- Maintain continuous 3-year CARF accreditation
- Maintain state licensing

Long Term Goals

- Obtain other funding sources
- Provide on-line training program

Strategic
Planning

