

Garden Bees

Blue campaign – “Rewilding Britain garden, by garden”

1



2



3



4



7



10



9



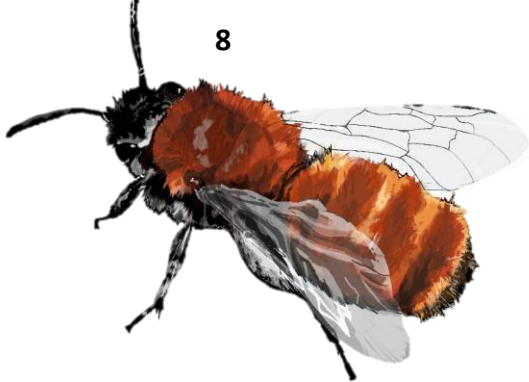
5



6



8



1. **Tree bumblebee (*Bombus hypnorum*)** - A white tail with a ginger/brown thorax and black abdomen. Seen March-July.
2. **Buff-tailed bumblebee (*Bombus terrestris*)** - Dark yellow bands on the thorax. Queen buff-tails will have the yellow-coloured tail while workers have a white tail. Seen March-August.
3. **Red-tailed bumblebee (*Bombus lapidarius*)** - Females are black with a deep red tail, while males have the addition of two yellow bands on their thorax and one on their abdomen. Seen April-November.
4. **Honey bee (*Apis mellifera*)** - Black and gold banding on abdomen. Seen March-September.
5. **Red mason bee (*Osmia bicornis*)** - Covered in gingery hair. Males can be distinguished by a patch of white hair on their face. Seen March-June.
6. **Patchwork leaf-cutter bee (*Megachile centuncularis*)** – Has a distinctive orange underside to its abdomen. Is often seen carrying a leaf section back to its nest. Seen April-August.
7. **Early bumblebee (*Bombus pratorum*)** - Bright yellow bands on its abdomen and thorax with an orange tip to its tail. Seen March-June.
8. **Tawny mining bee (*Andrena fulva*)** - Both males and females are covered in ginger hairs, however females are larger with a more dense covering of fur, while males sport a white tuft of hair on their face. Seen April-May.
9. **Gwynne's mining bee (*Andrena bicolor*)** - Females have reddish-brown hair on the top of their thorax with a completely black face. Seen March-August.
10. **Common carder bee (*Bombus pascuorum*)** - A very fluffy orange bee with dark bands on abdomen. Seen March-November.

