

The watch designed to keep you safe and in-touch with your loved ones.



Features:

- Fall alert
- Video chat
- 2-way calling
- Water resistant
- SOS call button
- Health pedometer
- Sedentary reminder
- Voice chat message
- Digital & analog time display
- Camera with video capability
- Night-time power saving mode
- Medication reminders & alarm clock
- Heart rate & blood pressure measuring
- Real-time GPS location with historical tracking & geofencing



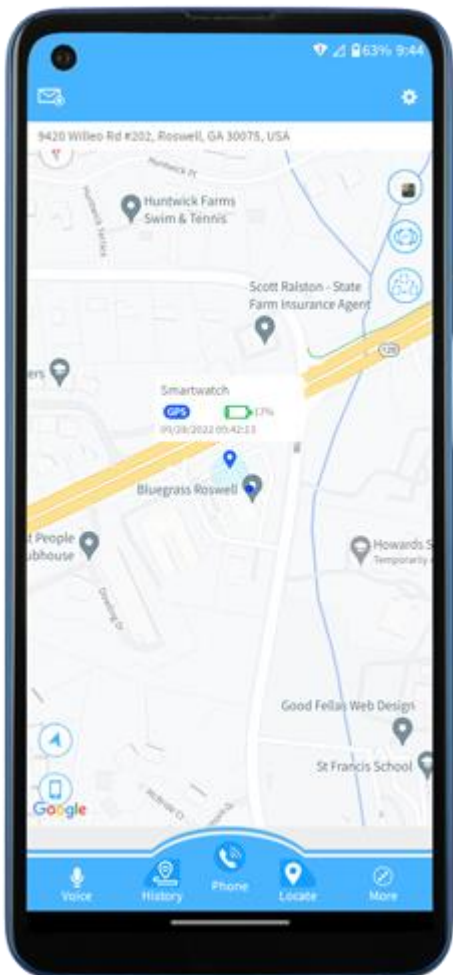
Model: AX2296

Watch & APP Highlights

Highly water resistant



Traditional outgoing and incoming voice calling with call blocking capability

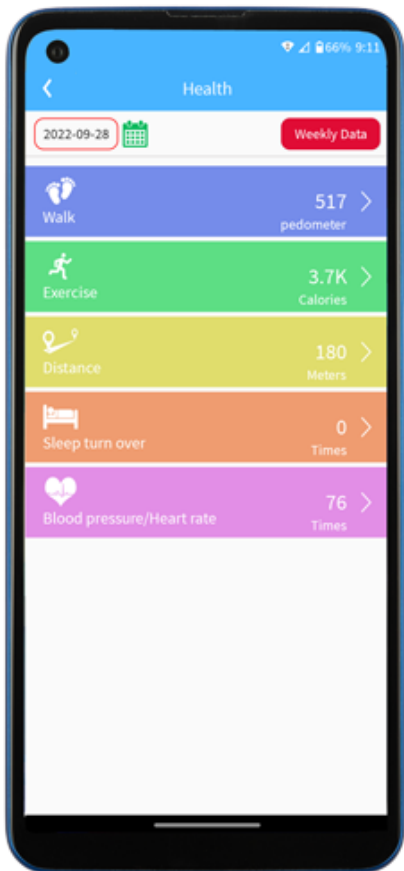


Feature-rich APP available in both iOS and Google APP stores.

- Watch finder function
- Multilanguage capability
- Set power-savings modes
- Fall alert sensitivity setting
- SOS number call sequence
- Remote reboot and shutdown
- Block all unknown calls to the watch
- Medication reminders & alarm clock
- Send/Receive chat messages to/from the watch
- 2-way video calling with family members of the APP
- Set watch's WiFi access with known WiFi access points
- Real-time GPS location with historical tracking & geofencing
- Remote heart rate & blood pressure measuring with saved history
- Add contacts to the watch for quick dialing and whitelist phone numbers

Watch & APP Highlights

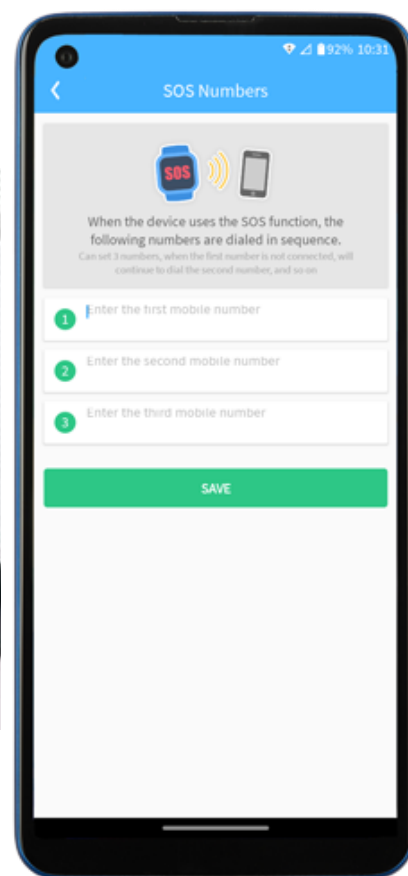
Heart Rate and Blood Pressure Monitoring with Remote Measurement available through the APP



Fall detection with automatic SOS calling to a nursing station or other preset phone numbers

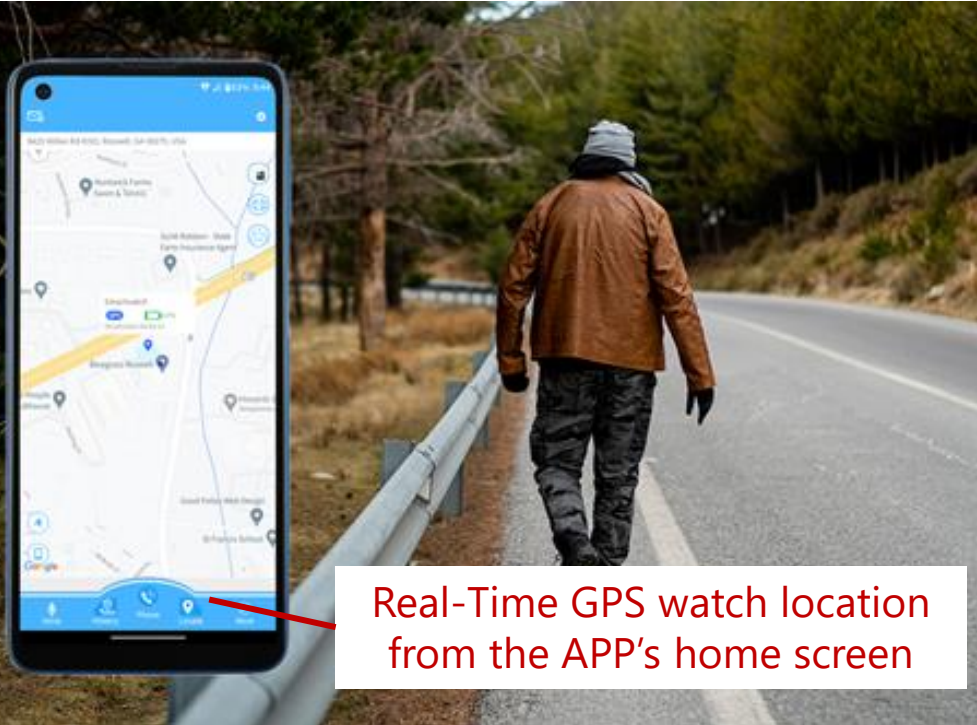


Up to three preset numbers will be called in sequence until an answer

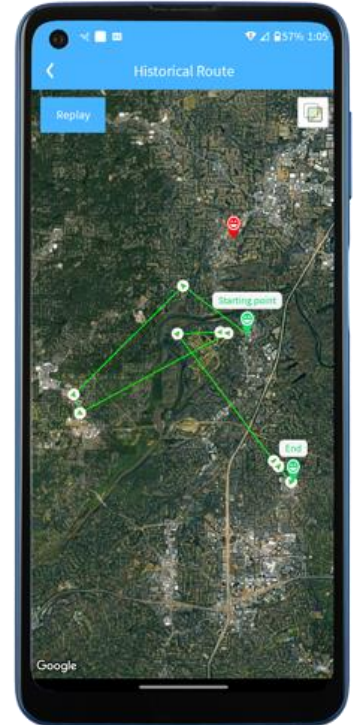


Watch & APP Highlights

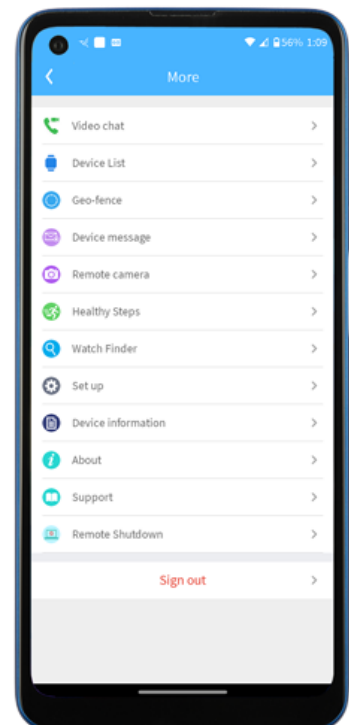
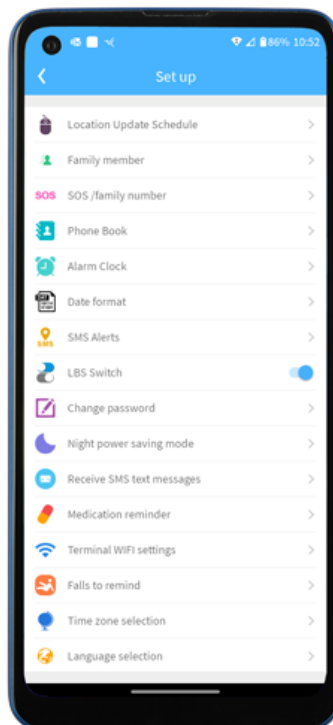
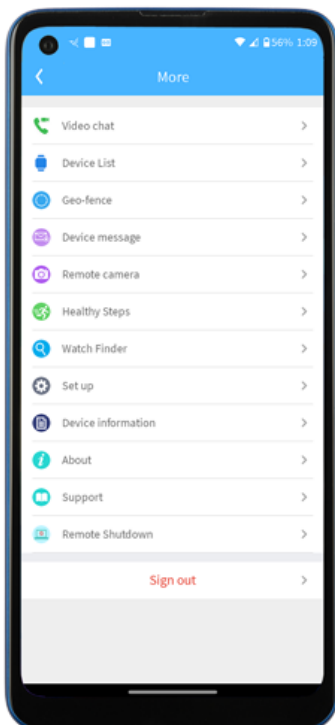
Watch uses GPS, LBS and external WiFi terminals for accurate mapping



GPS functions with route history



Extensive APP features for customized user experience

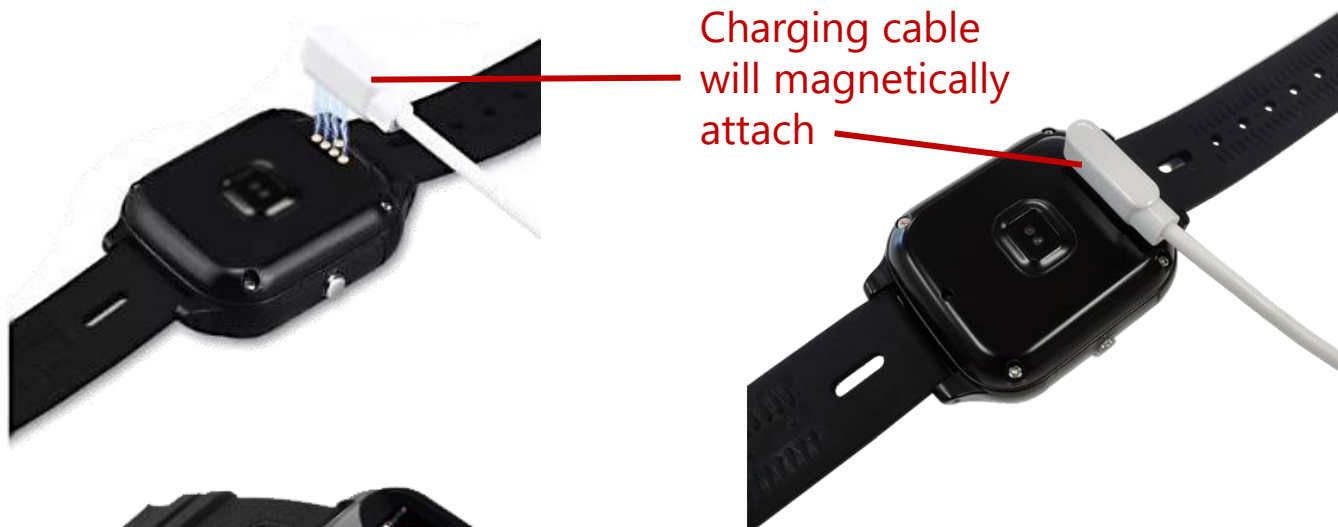


Physical Characteristics



Charging

- 1: Connect the cable to a USB power source and the other end to the watch.
- 2: Once charging as begun, the watch will show a progress bar and charge level.
- 3: If the battery level reaches 20% during use, the watch will send a notification to your caregiver as a reminder to charge its battery.



Optional power-bank desktop charging station

Getting Started

Your watch will arrive with the SIM card installed and activated.

1: Power-on your watch by holding on the **HOME** button for 3-5 seconds.



2: Explore the features of your Smartwatch by swiping the screen to the left.



Technical Specifications

Design

• ID design	Fashion elegant, water resistant to 30 meters
• Whole watch size	48x41x16.9mm
• Weight	50g
• Color	Black
• Button Single	Power button/SOS button
• Display	1.30" 240X240 pixels
• Touch screen	Support
• GPS antenna	High sensitive ceramics active antenna
• GSM antenna	Four frequency PIFA antenna
• Battery	600mAh
• SIM card	NANO size
• G-senser	Support
• Waterproof grade	IP67
• I/O port	Magnetic charging

Hardware

• Module	Chip 9820E
• Bands	LTE FDD: B1 B2 B3 B4 B5 B7 B12(17) B28A, WCDMA: Band 1\2\5
• Storage	256M+512M
• Camera	2 million pixels
• GPS signal	L1,1575.42MHz C/A
• GPS channel	22 channels
• GPS Tracking	-165dBm,capture sensitivity:-148dBm
• GPS location accuracy	5-15m
• WIFI indoor positioning	20-100m
• LBS location accuracy	100-1000m
• Working temperature	-20~70°C
• Working humidity	5% to 95% non-congealable
• Test and certification	CE Certification
• GPS antenna	High sensitive ceramic active antenna
• GSM antenna	Radius antenna
• G-senser	Support
• Touch screen	G+F single touch
• MIC	Support

Software

• Operating system	Support 2.3 and above Android system, IOS 5.0 and above
• Call function	Two way talk/SOS calling/ white list/ do not disturb mode
• Language support	27 languages including: English, French, Spanish, Portuguese, Italian
• Position	GPS+WIFI+LBS positioning
• A-GPS cold start	26 seconds positioning
• Power management	Ultra-low power consumption management, intelligent dormancy
• One key SOS	Press SOS key, automatic dial-up number
• Smart Geo-fence	Can automatically alarm when in/out of range
• Historical route	Can check three months' historical route
• Wireless upgrading	OTA upgrading, debugging, maintenance & setting parameters