



COMMUNITY MONITOR COMMITTEE

Altamont Landfill Settlement Agreement

*** The Public is Welcome to Attend***

VOTING MEMBERS

Chair
Jeff Williams
City of Livermore

Cindy McGovern
City of Pleasanton

Donna Cabanne
Sierra Club

Arthur Boone
Northern California
Recycling Association

NON-VOTING MEMBERS

Tianna Nurot
Waste Management
Altamont Landfill and
Resource Recovery
Facility

Eva Chu
Alameda County

Robert Cooper
Altamont Landowners
Against Rural
Mismanagement (ALARM)

STAFF

Judy Erlandson
City of Livermore
Public Works Manager

AGENDA

DATE: **Wednesday, January 13, 2010**
TIME: **4:00 p.m.**
PLACE: City of Livermore
Maintenance Services Division
3500 Robertson Park Road

1. Call to Order
2. Introductions
3. Roll Call
4. Approval of Minutes (November 4, 2009)
5. Open Forum This is an opportunity for members of the audience to comment on a subject not listed on the agenda. No action may be taken on these items.
6. Matters for Consideration
 - 6.1 **CMC Meeting Calendar for 2010 (Staff Report)**
 - 6.2 **Responses to Committee Members' Questions (ESA)**
 - 6.3 **Community Monitor Updates: Class 2 Soil File Review; Reports Received: Groundwater Monitoring; Plant Debris Ban Compliance Plan; Monthly Tonnage and Traffic (ESA); LFG Probe Installation Report**
 - 6.4 **Review of Reports from Community Monitor (ESA)**
 - 6.5 **Draft Annual Report Outline (ESA)**
7. Agenda Building

This is an opportunity for the Community Monitor Committee Members to place items on future agendas.
8. Adjournment

The next regular Community Monitoring Committee meeting will take place on March 10, 2010 at 3500 Robertson Park Road, Livermore.

Informational Materials:

- Community Monitor Roles and Responsibilities
- List of Acronyms
- November 4, 2009 Draft Minutes
- Reports from ESA

City of Livermore
TDD (Telecommunications for the Deaf)
(925) 960-4104

PURSUANT TO TITLE II OF THE AMERICANS WITH DISABILITIES ACT (CODIFIED AT 42 UNITED STATES CODE SECTION 12101 AND 28 CODE OF FEDERAL REGULATIONS PART 35), AND SECTION 504 OF THE REHABILITATION ACT OF 1973, THE CITY OF LIVERMORE DOES NOT DISCRIMINATE ON THE BASIS OF RACE, COLOR, RELIGION, NATIONAL ORIGIN, ANCESTRY, SEX, DISABILITY, AGE OR SEXUAL ORIENTATION IN THE PROVISION OF ANY SERVICES, PROGRAMS, OR ACTIVITIES. TO ARRANGE AN ACCOMMODATION IN ORDER TO PARTICIPATE IN THIS PUBLIC MEETING, PLEASE CALL (925) 960-4586/4582 (VOICE) OR (925) 960-4104 (TDD) AT LEAST 72 HOURS IN ADVANCE OF THE MEETING.

The Community Monitor Committee Agenda and Agenda Reports are prepared by City staff and are available for public review on the Thursday prior to the Community Monitor Committee meeting at the Maintenance Service Center, located at 3500 Robertson Park Road, Livermore. The Community Monitor Committee Agenda is available for public review at the Civic Center Library, located at 1188 S. Livermore Avenue, Livermore, and on the bulletin boards located outside City Hall, located at 1052 S. Livermore Avenue, Livermore, and the Maintenance Service Center.

Under Government Code §54957.5, any supplemental material distributed to the members of the Community Monitor Committee after the posting of this Agenda will be available for public review upon request at 3500 Robertson Park Road., Livermore or by contacting us at 925-960-8000.

If supplemental materials are made available to the members of the Community Monitor Committee at the meeting, a copy will be available for public review at the Maintenance Service Center, at 3500 Robertson Park Road, Livermore

Community Monitor Committee Roles and Responsibilities

Below is a summary of the duties and responsibilities of the Community Monitor Committee and related parties as defined by the Settlement Agreement between the County of Alameda, the City of Livermore, the City of Pleasanton, Sierra Club, Northern California Recycling Association, Altamont Landowners Against Rural Mismanagement, and Waste Management of Alameda County, Inc. The purpose of this document is to aid in determining if discussion items are within the scope of the Community Monitor Committee.

Community Monitor Committee's Responsibilities

Under Settlement Agreement section 5.1.2, the CMC is responsible for supervising and evaluating the performance of the Community Monitor as follows:

- A. Interviewing, retaining, supervising, overseeing the payment of, and terminating the contract with the Community Monitor;
- B. Reviewing all reports and written information prepared by the Community Monitor; and
- C. Conferring with the Community Monitor and participating in the Five Year Compliance Reviews (next due 8/22/2010) and the Mid-Capacity Compliance Review (due when the new cell is constructed and capacity is close to 50%, unlikely to occur before 2028) (Condition number 6 of Exhibit A of the Agreement).

Community Monitor's Responsibilities

The Community Monitor supplements and confirms the enforcement efforts of the County Local Enforcement Agency. The Community Monitor is primarily responsible for:

- A. Reviewing any relevant reports and environmental compliance documents submitted to any regulatory agency (sections 5.7.1, 5.7.2, and 5.7.3);
- B. Advising the public and the Cities of Livermore and Pleasanton about environmental and technical issues relating to the operation of the Altamont Landfill via the CMC (section 5.7.4);
- C. Presenting an annual written report summarizing the Altamont Landfill's compliance record for the year to the CMC and submitting the report to Alameda County and the Cities of Livermore and Pleasanton (section 5.7.5);
- D. Notifying the County Local Enforcement Agency and Waste Management of Alameda County of any substantial noncompliance findings or environmental risk (section 5.7.6);
- E. Monitoring and accessing the Altamont Landfill site and conducting inspections (section 5.7.7);
- F. Counting trucks arriving at the Altamont Landfill (section 5.7.8); and
- G. Reviewing waste testing data and source information (section 5.7.9).

Waste Management of Alameda County's Responsibilities

Per the settlement agreement, Waste Management is responsible for:

- A. Paying for the services of the Community Monitor, based on an annual cost estimate (section 5.3.3).
- B. Paying an additional 20% over the annual cost estimate if warranted based on "credible evidence" (section 5.3.3).

THIS PAGE INTENTIONALLY BLANK

List of Acronyms

Below is a list of acronyms that may be used in discussion of waste disposal facilities. These have been posted on the CMC web site, together with a link to the CIWMB acronyms page:

<http://www.ciwmb.ca.gov/LEACentral/Acronyms/default.htm>.

Updates will be provided as needed. This list was last revised on February 27, 2009.

Agencies

ACWMA – Alameda County Waste Management Authority
ANSI – American National Standards Institute
ARB or CARB – California Air Resources Board
ASTM – American Society for Testing and Materials
BAAQMD – Bay Area Air Quality Management District
CDFG or DFG – California Department of Fish and Game
CIWMB – California Integrated Waste Management Board
CMC – Community Monitor Committee
DWR – Department of Water Resources
LEA – Local Enforcement Agency (i.e., County Environmental Health)
RWQCB – Regional Water Quality Control Board
SWRCB – State Water Resources Control Board

Waste Categories

C&D – construction and demolition
CDI – Construction, demolition and inert debris
GSET – Green waste and other fine materials originating at the Davis Street Transfer Station, for solidification, externally processed.
GWRGCT – Green waste that is ground on site and used for solidification or cover
GWSA – Green waste slope amendment (used on outside slopes of the facility)
MSW – Municipal solid waste
RDW – Redirected wastes (received at ALRRF, then sent to another facility)
RGC – Revenue generating cover

Substances or Pollutants

ACM – asbestos-containing material
ACW – asbestos-containing waste
ADC – Alternative Daily Cover. For more information: <http://www.ciwmb.ca.gov/lqcentral/basics/adcbasic.htm>
BTEX – benzene, toluene, ethylbenzene, and xylene (used in reference to testing for contamination)
CH₄ – methane
CO₂ – carbon dioxide
DO – dissolved oxygen
HHW – household hazardous waste
LFG – landfill gas
LNG – liquefied natural gas
MTBE – methyl tertiary butyl ether, a gasoline additive
NMOC – Non-methane organic compounds
NTU – nephelometric turbidity units, a measure of the cloudiness of water
RL – reporting limit: in groundwater analysis, for a given substance and laboratory, the concentration above which there is a less than 1% likelihood of a false-negative measurement.
TCE - Trichloroethylene
TDS – total dissolved solids
TKN – total Kjeldahl nitrogen
VOC – volatile organic compounds

Documents

CCR – California Code of Regulations (includes Title 14 and Title 27)

CoIWMP – County Integrated Waste Management Plan
JTD – Joint Technical Document (contains detailed descriptions of permitted landfill operations)
MMRP – Mitigation Monitoring and Reporting Program
RDSI – Report of Disposal Site Information
RWD – Report of Waste Discharge
SRRE – Source Reduction and Recycling Element (part of CoIWMP)
SWPPP – Stormwater Pollution Prevention Plan
WDR – Waste Discharge Requirements (Water Board permit)

General Terms

ALRRF – Altamont Landfill and Resource Recovery Facility
BGS – below ground surface
CEQA – California Environmental Quality Act
CQA – Construction Quality Assurance (relates to initial construction, and closure, of landfill Units)
CY – cubic yards
GCL – geosynthetic clay liner
GPS – Global Positioning System
IC engine – Internal combustion engine
LCRS – leachate collection and removal system
LEL – lower explosive limit
mg/L – milligrams per liter, or (approximately) parts per million
µg/L – micrograms per liter, or parts per billion
PPE – personal protective equipment
ppm, ppb, ppt – parts per million, parts per billion, parts per trillion
STLC – Soluble Threshold Limit Concentration, a regulatory limit for the concentrations of certain pollutants in groundwater
TTLC – Total Threshold Limit Concentration, similar to STLC but determined using a different method of analysis
TPD, TPM, TPY – Tons per day, month, year
WMAC – Waste Management of Alameda County



COMMUNITY MONITOR COMMITTEE

Altamont Landfill Settlement Agreement

Minutes of November 4, 2009¹

DRAFT

1. Call to Order
Ms. McGovern called the meeting to order at 4:01 p.m.
2. Introductions
Introductions were waived.
3. Roll Call
Members Present: Jeff Williams; Cindy McGovern; Donna Cabanne; Eva Chu, Alameda County Environmental Health; and Tianna Nourot, Waste Management Altamont Landfill and Resource Recovery Facility (ALRRF)
Absent: Arthur Boone, Northern California Recycling Association; Robert Cooper, Altamont Landowners Against Rural Mismanagement
Staff: Judy Erlandson, City of Livermore Public Works Department; and Kelly Runyon, ESA, Community Monitor
4. Selection of Committee Chair
Mr. Williams was nominated to serve as Committee Chair by Ms. McGovern; Ms. Cabanne seconded; the vote was unanimous in favor.
5. Approval of Minutes
Referring to the minutes, Ms. McGovern asked about the status of the ALRRF's Compliance Plan for the Plant Debris ban enacted by the Alameda County Waste Management Authority. Ms. Nourot stated that the Compliance Plan for the ALRRF had recently been approved by the Authority. Ms. McGovern also asked if any further information was available regarding a possible turbine that could produce electric power from landfill gas and comply with BAAQMD permit requirements. Ms. Nourot stated that she had no new information on that subject. On the motion of Ms. McGovern, seconded by Ms. Cabanne, and carried by a vote of 3-0, the minutes of the meeting of July 8, 2009 were approved.
6. Open Forum
No comments were made.

¹ The September 9, 2009 meeting was cancelled due to lack of a quorum.

7. Matters for Consideration

7.1 Community Monitor Updates: Class 2 Soil File Review; Reports Received Mr. Runyon reported the following:

- The review of Class 2 soil profiles is continuing on a quarterly basis, and no discrepancies have been found in the first three quarters of 2009.
- The monthly truck count data have shown no exceedances of Conditional Use Permit limits. Similarly, the monthly reports of incoming refuse tonnage show no exceedances.
- The annual stormwater monitoring report showed significant improvement in discharge water quality, particularly for Basin B on the east side of the active area of the landfill (Fill Area 1).
- The "Title V" report regarding air emissions and controls provides a great deal of detailed information about the landfill gas control systems at the ALRRF, and this information has been summarized with:
 - Maps and a schematic of landfill gas extraction wells
 - A graph showing daily consumption of landfill gas by each of the gas control devices on site

As further Title V reports are received every 6 months, this summary information will be updated to show new gas wells, gas well shutdowns, and the use of any additional control equipment including the LNG plant.

The March 2009 extended power outage and its effect on landfill gas control systems was explained. The BAAQMD 3-day waiver for that period, and the lack of apparent impact on groundwater quality or surface gas emissions, was also discussed by Mr. Runyon.

Ms. Cabanne asked for clarification of some gas well removals, and whether this left gaps in the coverage of the site. Mr. Runyon explained that some other active wells were nearby, and Ms. Nourot mentioned that about 24 additional wells will be installed later this year.

7.2 Review of Reports from Community Monitor (ESA)

Mr. Runyon reported the following:

Since the previous meeting, four monthly reports on tonnage and vehicle counts have been received (on time) and reviewed.

Regarding site inspections, the primary problem that has been evident is windblown litter, which occasionally moves beyond the landfill property line. Also, erosion from heavy rain in October required repairs in several areas. It was noted that the landfill has begun to actively sort recyclable materials from loads brought in by the general public (i.e. not in transfer trucks.)

Mr. Williams asked about the quantity of wastes brought to the site by the general public, as a percentage of the total refuse. Mr. Runyon replied that the percentage is very small, and a more accurate response can be provided at the next meeting.

Ms. Cabanne asked why the quantity of biosolids was much greater in June and July than in prior months; and if that material came from within, or outside of, Alameda County. Mr. Runyon said that he could look into it.

Ms. Cabanne also asked for a further explanation of why the self-hauled material from Lawrence Livermore Labs had to be disposed, not recycled (as noted on Page 30 of the agenda packet). Mr. Runyon responded that he would look into it and respond at the next meeting.

Ms. Cabanne also asked about the expected completion date for the new landfill gas probe system, which was recently completed except for 3 probes that presented problems during installation. Ms. Nourot responded that this is in discussion with the CIWMB, and the outcome is uncertain at this time.

Ms. Cabanne then asked about a projected date for the opening of Fill Area 2. Ms. Nourot responded that it would be some time before this occurs, possibly one to two years.

Ms. McGovern asked for some clarification on the clearing of the Notice of Violation regarding high methane readings at an old landfill gas probe (which has since replaced by the newly installed probe system). Mr. Runyon responded that the violation was cleared because the old probe has been replaced, and the new probes do not indicate a violation. Ms. Cabanne pointed out that because the new probe system is incomplete, this raises some concern about the clearing of this violation. Mr. Runyon replied that the CIWMB has accepted the new system "in the interim" and the new probes do not show gas escaping beyond that portion of the site boundary.

7.3 Amendment of ESA Contract – correction (verbal update from staff)

Ms. Erlandson explained that the earlier correction to the ESA contract contained a typographical error referencing the City when it should refer to the Committee.

Mr. Williams made a motion, and Ms. Cabanne seconded, to accept the correction. The vote was unanimous in favor of acceptance.

8. Agenda Building

Mr. Williams asked about the mechanism for responding to questions raised by Committee members. Mr. Runyon responded that this would be done through a memorandum or report to be presented at the next meeting.

9. Adjournment

The meeting was adjourned at 4:50 p.m. The next meeting will be held on **Wednesday, January 13 at 4:00 p.m.** at the Livermore Maintenance Services Division at 3500 Robertson Park Road.



**COMMUNITY MONITOR COMMITTEE
STAFF REPORT**

TO: Honorable Chairperson and Community Monitor Committee Members
 FROM: Judy Erlandson, Public Works Manager
 SUBJECT: Community Monitor Committee Meeting Calendar for 2010

RECOMMENDED ACTION

Staff recommends the Community Monitor Committee approve the Community Monitor Committee Meeting Calendar for 2010.

DISCUSSION

In November 2008, the Community Monitor Committee members confirmed that the Community Monitor Committee would continue to meet on Wednesdays of odd-numbered months at 4pm at the Maintenance Service Center in the City of Livermore.

The following schedule represents the proposed schedule for the remainder of 2010:

- March 10th
- May 12th
- July 14th
- September 8th
- November 10th

Staff has confirmed the Maintenance Service Center Lunch Room availability for all proposed dates. Approval of this calendar will establish the regular meeting dates for 2010.

ATTACHMENTS

1. None.

Approved by:

Daniel McIntyre
Public Works Director

MEETING DATE:
01-13-2010

AGENDA ITEM:
6.1

THIS PAGE INTENTIONALLY BLANK



225 Bush Street
Suite 1700
San Francisco, CA 94104
415.896.5900 phone
415.896.0332 fax

memorandum

date December 18, 2009
to ALRRF Community Monitor Committee
from Kelly Runyon
subject CMC Meeting of 1/13/10 - Agenda Item 6.2 - Responses to Committee Members' Questions

In the Committee meeting of November 4, Committee members raised several questions, which are restated below, with responses.

What percentage of the refuse brought to the ALRRF is delivered by the general public?

ALRRF staff have responded to this question by reviewing a cash customer report (summarizing information on those customers who do not have accounts) and found a total of 25 tons from November of 2008 through November of 2009. For an average month in the last year, this would equate to 2 tons out of 80,000, or 0.0025%.

What were the sources of the high volume of biosolids in June and July 2009? How much was from in-County, vs. out-of-County, sources?

ALRRF staff report that an in-County sewage treatment plant was cleaning out its stockpiled biosolids.

Why cannot materials from Lawrence Livermore National Labs be recycled?

ALRRF staff have referred us to California Governor's Executive Order D-62-02, which directs Regional Water Boards to impose a moratorium on the disposal of low-level decommissioned radioactive materials in Class III landfills or unclassified waste management units.

Anticipating further questions from Committee members, we submitted several questions to ALRRF staff for further clarification. Those questions and answers (from Tianna Nourot) are:

Q: Are all C&D materials from LLNL assumed to contain low-level radioactive materials, which would make them subject to this Executive Order?

A: No, some C&D wastes contain residual radioactivity and some do not. LLNL does not dispose low-level radioactive waste at the Altamont.

Q: Does LLNL document the presence, or absence, of low-level radioactive materials for any of the loads that the ALRRF receives from there?

A: Yes, all materials are profiled (including analytical or generator knowledge) and approved prior to disposal.

Q: Did the RWQCB issue a directive regarding low-level radioactive material?

A: I am not aware of additional RWQCB directives that go beyond [the] Davis Memo [Executive Order D-62-02].

What is the expected date for the opening of Fill Area 2?

ALRRF staff currently are projecting construction completion in 2011 and initial waste in place in 2012.

What is the status of the CIWMB's acceptance of the new landfill gas probes?

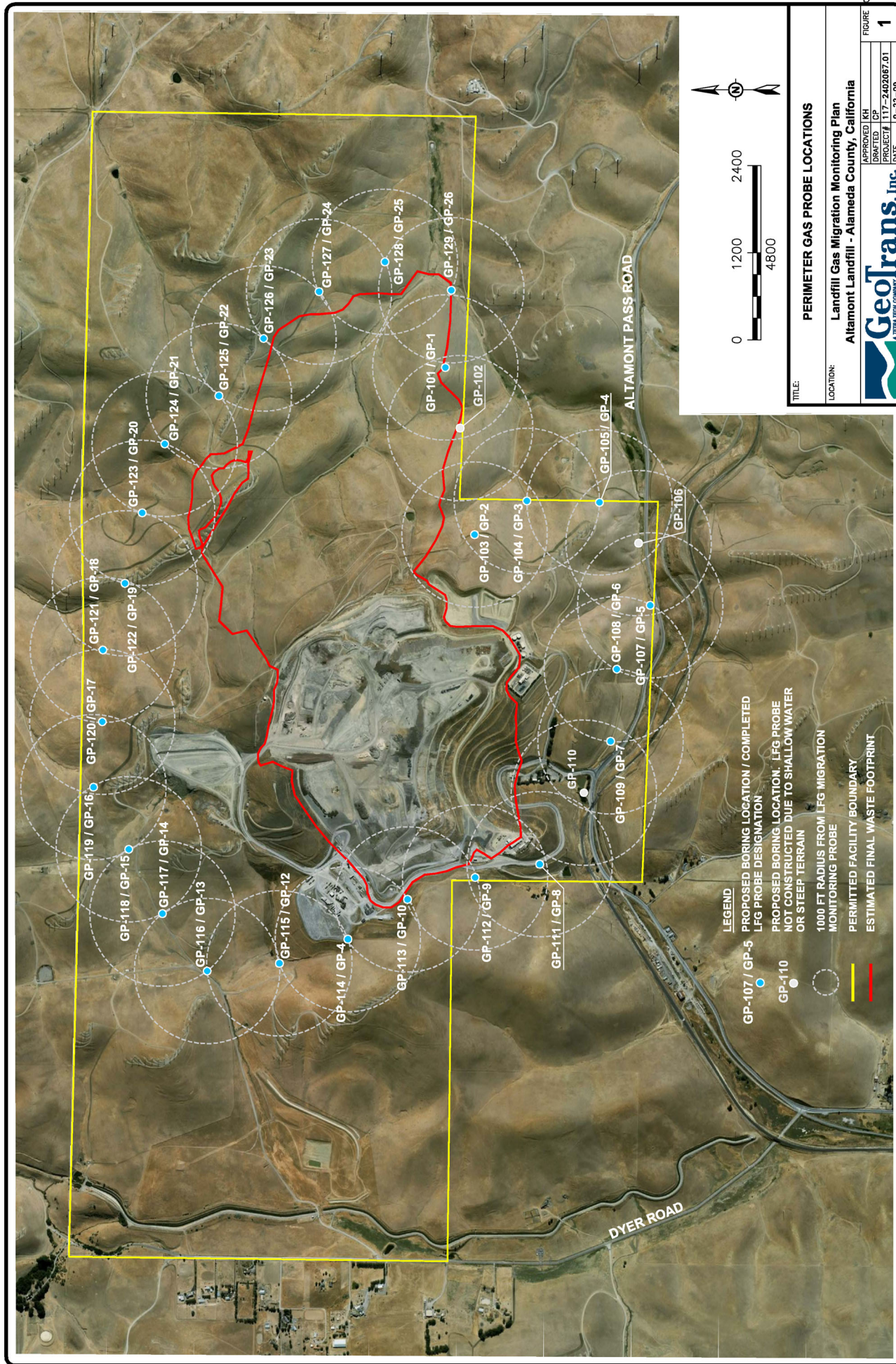
As stated by ALRRF staff in the November 4 CMC meeting, the perimeter probes required by new regulations were installed in 2009 except for 3 probes. Figure 1, below, illustrates the situation. While drilling probes GP-110 and GP-106, near Altamont Pass Road, the installers encountered groundwater too shallow for construction of a probe. Those boreholes were abandoned. From the available information, it is not clear if alternate locations have been determined and accepted by the LEA and CIWMB.

In the third case, along the south edge of Fill Area 2 (the expansion area, not yet developed), access to the probe site for GP-102 would create such an impact that ALRRF has sought to eliminate that probe entirely. The LEA has recommended delay of that installation until the physical development of Fill Area 2 begins. There is a probe installed 1,000 feet to each side of the GP-102 site.

Final approval of these proposed changes is in discussion with CIWMB staff. ALRRF is awaiting a response from CIWMB staff at this time.

The LEA is tracking this issue and related matters. The LEA's inspection report from October 27 states, in the Comments section, "Submit final as-built gas probe installation report by Jan 18, 2010." This report was submitted on December 17, and the Community Monitor has received and reviewed a copy.

It should also be noted that the CIWMB functions are being consolidated with the Division of Recycling (formerly part of the Department of Conservation) to become the Department of Resource Recycling and Recovery within the Natural Resources Agency on January 1, 2010.



TITLE: PERIMETER GAS PROBE LOCATIONS
LOCATION: Landfill Gas Migration Monitoring Plan
 Altamont Landfill - Alameda County, California

APPROVED	KH
DRAWN	CP
PROJECT #	117-2402087.01
DATE	9-22-09

FIGURE
1

Geotrans, Inc.
 A TERRA TECH COMPANY

LEGEND

- GP-107 / GP-5 (blue dot) PROPOSED BORING LOCATION / COMPLETED LFG PROBE DESIGNATION
- GP-110 (black dot) PROPOSED BORING LOCATION, LFG PROBE NOT CONSTRUCTED DUE TO SHALLOW WATER OR STEEP TERRAIN
- (dashed circle) 1000 FT RADIUS FROM LFG MIGRATION MONITORING PROBE
- (yellow line) PERMITTED FACILITY BOUNDARY
- (red line) ESTIMATED FINAL WASTE FOOTPRINT

THIS PAGE INTENTIONALLY BLANK



225 Bush Street
Suite 1700
San Francisco, CA 94104
415.896.5900 phone
415.896.0332 fax

memorandum

date December 18, 2009
to ALRRF Community Monitor Committee
from Kelly Runyon
subject CMC Meeting of 1/13/10 - Agenda Item 6.3 - Community Monitor Updates

This memorandum provides an update on work-in-progress by the Community Monitor:

Class 2 Soil File Review – The final file review session was held in mid December. No discrepancies were found.

Reports Received – Several periodic reports have been received and are discussed below:

The First Semiannual 2009 Groundwater Monitoring Report was received in July and has now been fully reviewed by Treadwell and Rollo. Their memo providing their findings is appended to this memorandum. In brief:

- No critical issues are noted.
- Minor deviations from historical concentrations, at some wells, warrant continued monitoring of these reports.
- This report recognizes new Waste Discharge Requirements issued by the Regional Water Board in April 2009.

The Alameda County Plant Debris Ban Compliance Plan was received on November 17, 2009 and has been reviewed. It is consistent with the requirements of the Plant Debris Ban Ordinance and with ongoing operations at the site. Staff at the Alameda County Waste Management Authority deemed the report complete in a letter dated October 29, 2009.

Monthly Tonnage Reports and Truck Counts for October and November were received. Truck counts indicate no exceedances of Use Permit conditions in October or November. Tonnages are also within permit limits. Material quantities are discussed further in the next Agenda Item.

The Landfill Gas Probe Installation Report was received on December 17, 2009, and the text of that report has been reviewed. It is consistent with earlier verbal updates on the status of the installation of the new probe system, and it documents the difficulties encountered in the installation of three of the probes, as discussed in the previous Agenda Item.

THIS PAGE INTENTIONALLY BLANK



MEMORANDUM

TO: Kelly Runyon, ESA

FROM: Jeremy Gekov, Senior Staff Geologist
Matthew Hall, PE, Senior Project Engineer

DATE: 17 December 2009

PROJECT: Altamont Landfill (ALRRF)
Livermore, California
4774.02

SUBJECT: Groundwater Analysis for Community Monitor Progress Report #4 No. of Pages: 4

Treadwell & Rollo, Inc. (Treadwell & Rollo) has reviewed hydrogeologic data for the Altamont Landfill and Resource Recovery Facility in Livermore, California (ALRRF). Treadwell & Rollo performed the following tasks:

- Reviewed *First Semiannual-Annual Groundwater Monitoring Report, Altamont Landfill and Resource Recovery Facility (WDR Orders 5-02-119 and R5-2009-0055)*, prepared by SCS Engineers, Long Beach, California, dated July 2009.
- Reviewed new *Order No. R5-2009-0055, Waste Discharge Requirements for Waste Management of Alameda County, Inc., Altamont Landfill and Resource Recovery Facility*
- Reviewed *Monitoring and Reporting Program No. R5-2009-0055, for Waste Management of Alameda County, Inc., Altamont Landfill and Resource Recovery Facility*

This memorandum describes the results of the above tasks and provides our opinions and recommendations for the Community Monitor Committee (CMC). These reports were reviewed for issues described in previous CMC meeting minutes and for potential trends in groundwater analytical data over recent years. Groundwater monitoring activities and findings, as required by the WDR's, were generally found to be in compliance during the First and Second Quarters of 2009.

Groundwater Monitoring and Quality

First and Second Quarter 2009 volatile organic compound (VOC) and inorganic constituents concentrations in groundwater are similar to historical values, with the following exceptions:

- Statistical exceedance of Total Kjeldahl Nitrogen (TKN) (1.6 milligrams per liter [mg/L]), and slight increase of dissolved potassium in detection and corrective action (CAP) well E-23 during Second Quarter, but overall trends for well E-23 are stable.
- First historical detection of chloromethane (1.2 micrograms per liter [$\mu\text{g/L}$]), and first detection of carbon disulfide (0.54 $\mu\text{g/L}$) since 2002 in well E-23 during Second Quarter. The reported results for both of these compounds were estimated and below the laboratory reporting limits.
- TKN (4.2 mg/L) in vadose zone well VZM-A decreased during the First Quarter, but there is still an overall increasing trend since monitoring began in 2001. Tetrahydrofuran (7.2 $\mu\text{g/L}$) increased slightly in VZM-A during First Quarter, but the First Quarter 2009 concentration is still lower than the historical maximum (10 $\mu\text{g/L}$) detected during Second Quarter 2008.

ENVIRONMENTAL AND GEOTECHNICAL CONSULTANTS

501 14TH STREET, 3RD FLOOR OAKLAND CALIFORNIA 94612 T 510 874 4500 F 510 874 4507 www.treadwellrollo.com



Kelly Runyon
 ESA
 17 December 2009
 Page 2

- Gradual increasing trend for chloride (160 mg/L) and for chlorobenzene (1.2 µg/L) in corrective action well E-20B.

A statistical exceedance of TKN, a slight increase of dissolved potassium, and the detection of two VOCs at trace concentrations that were either historically not detected, or not detected since 2002 in well E-23, does warrant close evaluation. Concentrations of inorganics and VOCs in E-23 will continue being closely evaluated in future Groundwater Monitoring Reports to monitor for increasing trends.

Unsaturated Zone Inorganic and VOC Concentrations

Unsaturated zone monitoring well VZM-A is used as an early warning device to monitor for potential breaches in the landfill liner. VZM-A continues to show a general increase in ammonia. The TKN concentration (4.2 µg/L) has decreased since Second Quarter 2008. Tetrahydrofuran was detected in VZM-A at a concentration of 7.2 µg/L, which is the highest concentration since April 2008. Trace concentrations of other VOCs were detected in groundwater samples collected from VZM-A, but the results are consistent with historical concentrations. The VOC and inorganic concentrations from this well will be monitored for increasing trends during future sampling events.

Laboratory Contamination

Methylene chloride, acetone, bromoform, diethyl ether, and dibromochloromethane were detected in trip and/or field blank samples associated with Second Quarter 2009 sampling and are likely attributable to laboratory contamination.

Temporary Shutdown of Landfill Gas Collection System and Potential Effects

The landfill gas (LFG) collection system was temporarily shutdown between 16 and 19 March 2009. Based on the information reviewed, the LFG shutdown does not appear to have caused a fluctuation in groundwater concentrations.

New Waste Discharge Requirements Order No. R5-2009-0055

A new Waste Discharge Requirements/Monitoring Reporting Program (WDR/MRP) Order No. R5-2009-0055 (2009 WDR/MRP) was adopted by the California Regional Water Quality Control Board, Central Valley Region (Board) on 24 April 2009. Previous Order No. R5-2002-0119 (2002 WDR/MRP) was rescinded upon adoption of 2009 WDR/MRP. During the First Quarter 2009, the sampling program was conducted in accordance with the 2002 WDR/MRP. During the Second Quarter 2009, the sampling program was conducted in accordance with the 2009 WDR/MRP.



Kelly Runyon
 ESA
 17 December 2009
 Page 3

Changes between 2002 WDR/MRP and 2009 WDR/MRP include the following:

1. Previously designated leachate monitoring points, VD and VD2 are redesignated as unsaturated zone¹ monitoring locations
2. Sampling frequency for the unsaturated zone decreased from quarterly to annually
3. Piezometer E-22 is no longer designated as a detection well
4. Sampling of the groundwater interceptor barrier (GWIB) is no longer required
5. Previously designated leachate indicator monitoring wells E-05 and E-07 are redesignated as dual purpose detection and corrective action monitoring wells for Fill Area 1.

The 2009 WDR/MRP indicates that the changes above are based upon data presented in SCS Engineers' 2005 Revised Engineering Feasibility Study. Treadwell & Rollo will review the 2005 Revised Engineering Study and evaluate the rationale for the above changes and their potential implications to the groundwater monitoring program at ALRRF.

New groundwater/surface water protection requirements of 2009 WDR/MRP include:

1. Each storm water retention basin will be sampled annually and analyzed for parameters listed in the WDR/MRP. Surface water flows from storm water retention basins shall be monitored twice during the wet season (October 1 to May 30) at the point(s) where they leave the facility when discharge from the storm water basin is occurring.
2. Submittal of a work plan proposing installation of groundwater monitoring wells for Fill Area 2; a monitoring well installation report; and a report summarizing the un-impacted background groundwater data from the newly installed wells. The data submitted shall include one year of groundwater data.
3. Submittal of a work plan proposing a monitoring program for the Class II surface impoundments; a report summarizing installation of a monitoring network, if necessary; and a report summarizing the un-impacted background groundwater data from the surface impoundment area. This data will include one year of data prior to the discharge of any wastes into the impoundment areas.

¹ The unsaturated zone, also termed the vadose zone, is the zone between the land surface and the top of the water table where soil pores are not fully saturated, although some water may be present.



Kelly Runyon
ESA
17 December 2009
Page 4

ALRRF installed five monitoring wells (MW-4A, MW-8A, MW-8B, MW-9, and MW-10) for Fill Area 2 prior to March 2006 and collected two years of quarterly monitoring data to evaluate background levels prior to discharge to Fill Area 2. Data from monitoring wells MW-8A, MW-8B, MW-9, and MW-10 are presented in the current report. The data from monitoring well MW-4A was not reported in the First Semiannual 2009 Groundwater Monitoring Report, but was presented in the First Semiannual 2008 Groundwater Monitoring Report. Groundwater concentrations in MW-4A, MW-8A, MW-8B, MW-9, and MW-10 appear to be stable. No additional groundwater monitoring is planned for Fill Area 2 wells until discharge begins in the new Fill Area 2.



225 Bush Street
Suite 1700
San Francisco, CA 94104
415.896.5900 phone
415.896.0332 fax

CMC Agenda Item 6.4
www.esassoc.com

memorandum

date December 18, 2009
to ALRRF Community Monitor Committee
from Kelly Runyon
subject CMC Meeting of 1/13/10 - Agenda Item 6.4 - Review of Reports from Community Monitor

Attached are our inspection reports for November and December of 2009. Both inspections were announced, were in the morning during normal working hours, and did not accompany the LEA. All landfill operating areas and all three stormwater basins were observed each time. LEA inspection reports and the Special Occurrences Log were reviewed in conjunction with each inspection.

Issues that cause concern are marked with yellow rectangles in the left-hand margins of the monthly inspection reports. In November and December, no issues raised concern that would merit such a marking. Litter control continues to be a difficult issue for the site, but crews continue to collect litter, and an extra effort is being made to keep stormwater basins litter free.

Tonnages of incoming material were generally within normal ranges, although the amount of biosolids in October is atypically high, and the amount of Class 2 soil material in November is much higher than usual; the highest since mid 2008. These probably reflect new sources of Class 2 soil material, as well as one or more possible cleanout projects at wastewater treatment plants.

Graphs by material type are provided in Figures 1 and 2 below.

Figure 1

Monthly Volumes of Revenue-Generating Cover

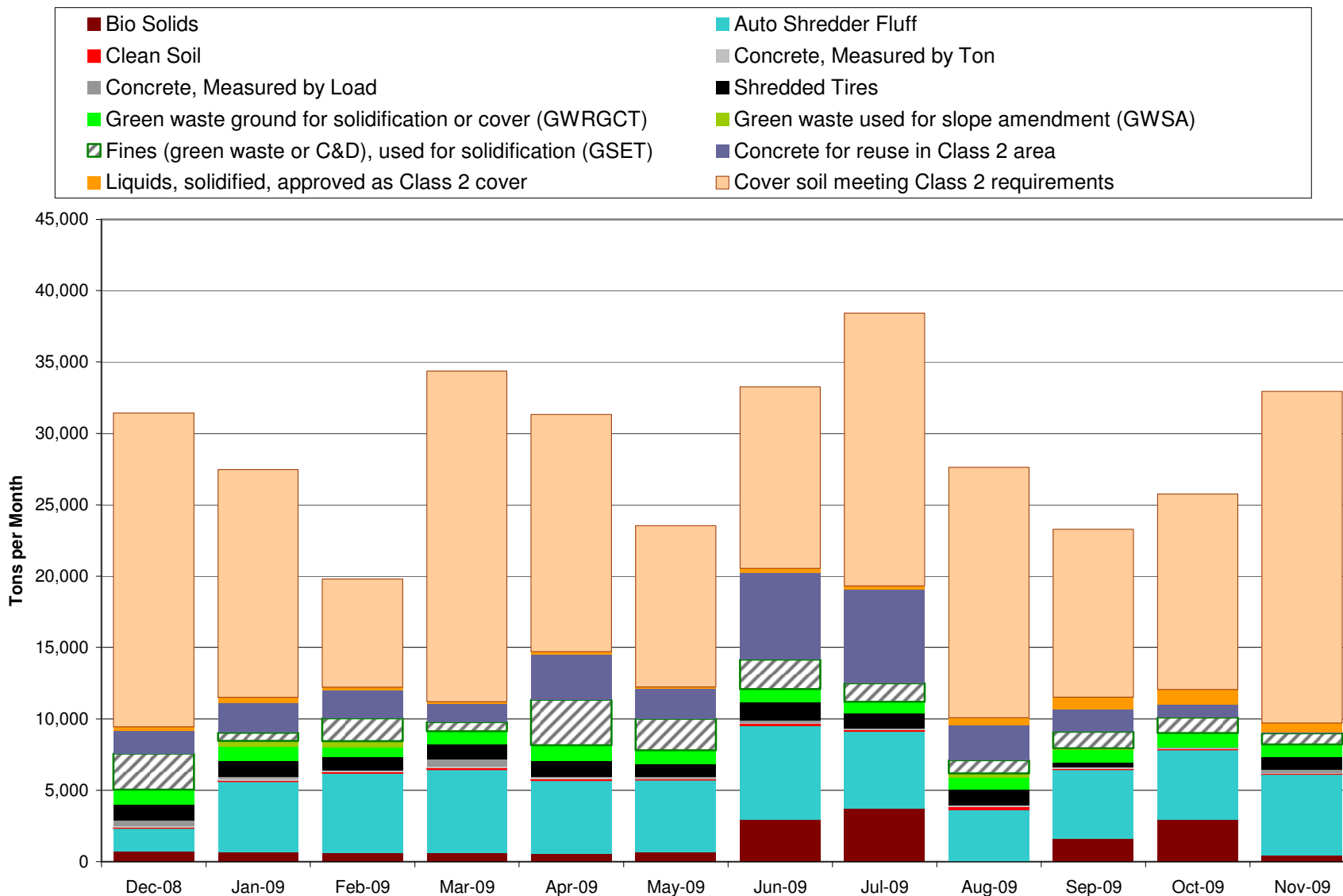
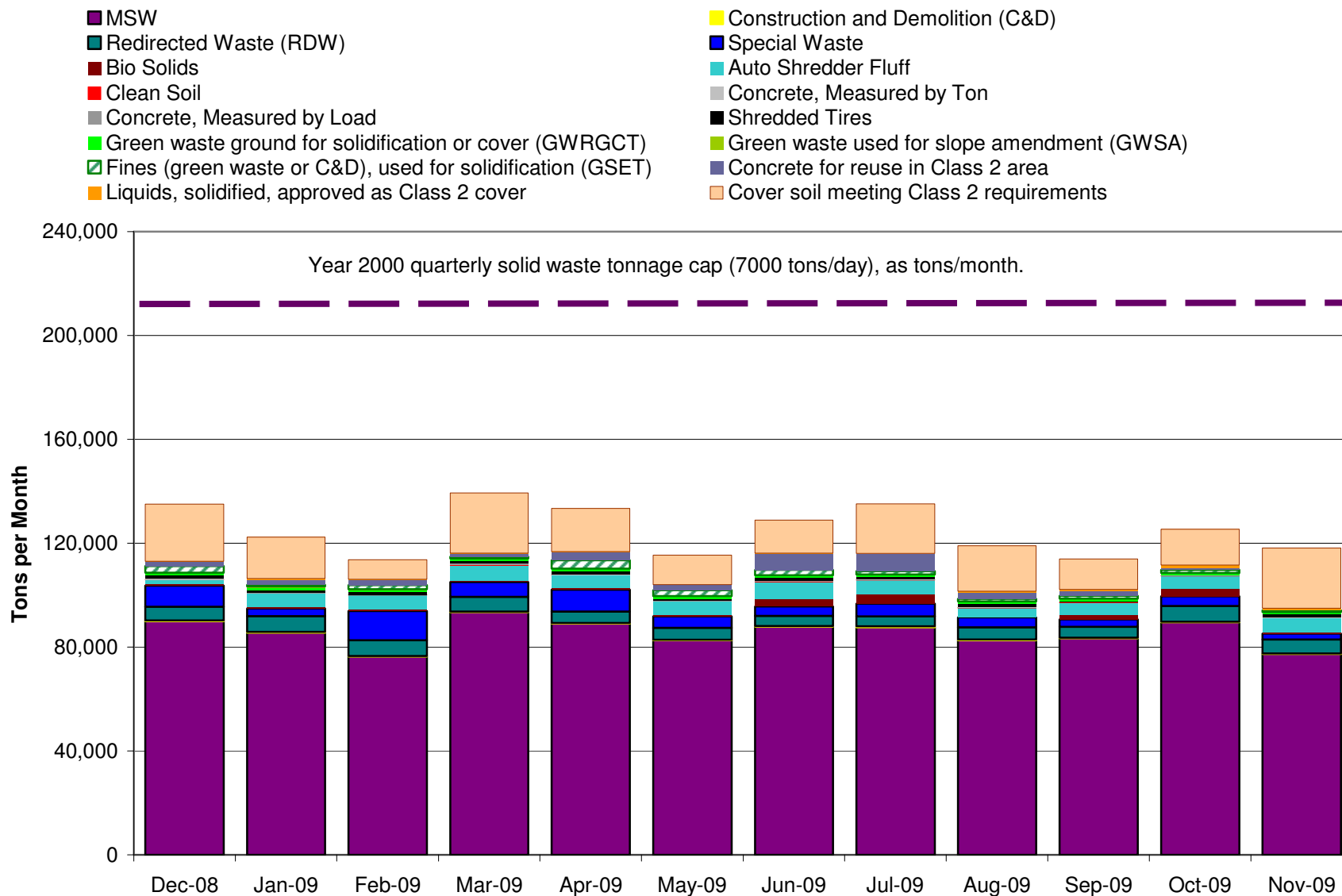


Figure 2

Monthly Volumes of All Materials



THIS PAGE INTENTIONALLY BLANK

ALRRF Community Monitor Monthly Report

November 2009

Reports Received

Monthly Tonnage Report for October 2009, dated November 10, 2009

Tonnage Summary:		<u>tons</u>	
Disposed, By Source Location			
1.1	Tons Disposed from Within Alameda County	58,306.78	
1.2	Tons Disposed from City of San Francisco TS	32,734.02	
1.3	Other Out of County Disposal Tons	<u>2,462.37</u>	
	subtotal Disposed	93,503.17	
Disposed, By Source Type			
2.1	C&D	149.68	
2.2	MSW	89,621.25	
2.3	Special Wastes	<u>3,732.24</u>	
	subtotal Disposed	93,503.17	
	Difference Not Yet Reconciled	0.00	0.00%
Other Major Categories			
2.4	Re-Directed Wastes (Shipped Off Site or Beneficially Used)	6,085.35	
2.5	Revenue Generating Cover	26,066.63	
	Total, 2.1 - 2.5	125,655.15	
Materials of Interest			
2.3.1	Friable Asbestos	323.84	
2.3.2	Class 2 Cover Soils	13,708.46	
2.5.1	Auto Shredder Fluff	4,897.44	
2.5.2	Processed Green Waste/MRF fines, Beneficial Use (GSET)	1,086.19	

ALRRF Community Monitor Monthly Report**November 2009****Site Visit**Site Inspection November 11, 2009, 8:00 AM to 10:00 AM

- Attended by Kelly Runyon. Escorted by Neil Wise.
- Observed refuse receiving, placement and compaction. Observed stockpiles and processing areas. Tippers are south of center of Fill Area 1, gradually progressing southward. Two compactors and one dozer operating.
- Public self-haul wastes, and any wastes not requiring tippers, are unloaded to either side of the tipper locations. On west side, a sorting area is designated for manual sorting of recyclables from self-haul loads rich in sortable recyclable materials.
- Near the working face, two gas extraction wells were shut down to avoid impeding operations.
- Winds light to moderate; windblown litter not occurring during this visit.
- Asbestos area in good condition; all material covered.
- Erosion damage repairs are complete. No new erosion damage seen.
- Preparations are being made for installation of 25 more landfill gas extraction wells.
- San Ramon green material pile and Livermore green / food waste material normal in size; food materials less evident in Livermore pile this month (compared to prior visits). No odor or vector problem apparent.
C&D pile had small device (portable compressor?) in pile. Was removed by staff after being observed.

Stormwater Controls and Best Management Practices

- All three Basins (A, B, C) and upslope areas appear to be in good condition. Areas repaired after early-October rains are in good condition. Seed placed below erosion control matting on front face of landfill is sprouting.
- Basin A is free of litter and debris. Basin B has windblown litter in water and around basin. Basin C has some floating / floatable trash in southeast corner but appears free of recent windblown litter.
- Road to Basin B, and slope above, were recently graded and are in good condition.

Observation of Environmental Controls

- Windblown litter observable to east of site, in typical amounts. Crew working to clean up.
- Litter fences generally clean, except along lowest part of fence wire.
- Truck wash equipment and basin at scale house are being serviced.
- Many gulls on site; propane bird-scare cannons operating but not affecting most birds.
- Gas controls: LNG plant and its flare operating. Both IC engines and both turbines running. "Old" flare (near turbines) apparently not running.

Other Observations

- A transfer trailer staging area is being constructed near the weigh scales, to provide flexibility for transfer operations. Full trailers may be left there, to be emptied at a later time.
- Small backhoe seen potholing southwest of the active area, to locate an 8-inch gas line prior to stripping off soil when preparing for next lift.
- An unused pond area near the leachate treatment plant has been lined with PVC and is holding raw water for use while water supplies are temporarily unavailable due to water system maintenance work.
- Special Occurrences Log notes an incident on October 21: an employee of Shamrock (on-site tire processor) became violent after being terminated for cause. No injuries. Sheriff is handling.

ALRRF Community Monitor Monthly Report

December 2009

Reports Received

Monthly Tonnage Report for November 2009, dated December 11, 2009

Tonnage Summary:		<u>tons</u>	
Disposed, By Source Location			
1.1	Tons Disposed from Within Alameda County	47,914.82	
1.2	Tons Disposed from City of San Francisco TS	30,678.02	
1.3	Other Out of County Disposal Tons	<u>1,248.39</u>	
	subtotal Disposed	79,841.23	
Disposed, By Source Type			
2.1	C&D	188.66	
2.2	MSW	77,407.82	
2.3	Special Wastes	<u>2,244.75</u>	
	subtotal Disposed	79,841.23	
	Difference Not Yet Reconciled	0.00	0.00%
Other Major Categories			
2.4	Re-Directed Wastes (Shipped Off Site or Beneficially Used)	5,385.84	
2.5	Revenue Generating Cover	33,939.48	
	Total, 2.1 - 2.5	119,166.55	
Materials of Interest			
2.3.1	Friable Asbestos	207.85	
2.3.2	Class 2 Cover Soils	23,245.17	
2.5.1	Auto Shredder Fluff	5,663.28	
2.5.2	Processed Green Waste/MRF fines, Beneficial Use (GSET)	768.44	

ALRRF Community Monitor Monthly Report**December 2009****Site Visit**Site Inspection December 8, 2009, 9:00 AM to 10:30 AM

- Attended by Kelly Runyon. Escorted by Tianna Nourot.
- Observed refuse receiving, placement and compaction. Observed stockpiles and processing areas. Tippers are south of center of Fill Area 1, continuing to move southward. Two compactors and two dozers operating.
- Public self-haul wastes, and any wastes not requiring tippers, are unloaded to either side of the tipper locations. On west side, a sorting area is designated for manual sorting of recyclables from self-haul loads rich in sortable recyclable materials.
- Winds light to moderate; windblown litter not occurring during this visit.
- Snow had occurred two days prior to this visit. Some snow remained on north-facing slopes of nearby hills. Operations continued during the snowfall, except that gas extraction well drilling was suspended. Photo, from ALRRF staff, attached.
- Asbestos area in good condition; no material exposed.
- Installation of 25 landfill gas extraction wells is under way; see photo, next page.
- San Ramon green material pile and Livermore green / food waste material normal in size. Livermore materials being loaded out for off-site processing. No odor or vector problem.
- C&D pile had insecticide spray can and small cylindrical object next to pile. Staff checked both items. Can was empty, object was a roll of large labels.

Stormwater Controls and Best Management Practices

- All three Basins (A, B, C) and upslope areas appear to be in good condition. Areas repaired after early-October rains are in good condition.
- Basin A is free of litter and debris. Basin B has been cleaned, only a small amount of windblown litter remains near basin inlet. Basin C has some floatable trash along south edge but appears free of recent windblown litter.

Observation of Environmental Controls

- Windblown litter observable, in typical amounts. Crew working to clean up, above entry road.
- Litter fences generally clean.
- Most ditches and drains clean and serviceable.
- Many gulls on site; propane bird-scare cannons not operating.
- Gas controls: LNG plant and its flare not operating. Both IC engines off, both turbines running. "Old" flare (near turbines) operating, louvers nearly shut, some flame visible at top of stack. Staff checked and reported that this is a temporary condition.

Other Observations

- Construction of the transfer trailer staging area near the weigh scales appears to be nearly complete.
- Raw water supply pond continues to be operating.
- No new special occurrences.
- In addition to gulls, several large hawks seen on site, hunting or resting.
- Observation of height of landfill, from nearby point known to be near final elevation, indicates that the highest portion is close to the final design height of Fill Area 1. However, much of Fill Area 1 is well below this elevation, and settlement will also cause height to decrease several feet or more, over time.

ALRRF Community Monitor Monthly Report

December 2009

Landfill gas extraction well drilling rig, and eroded areas repaired after early October rain.







225 Bush Street
Suite 1700
San Francisco, CA 94104
415.896.5900 **phone**
415.896.0332 **fax**

CMC Agenda Item 6.5
www.esassoc.com

memorandum

date December 18, 2009
to ALRRF Community Monitor Committee
from Kelly Runyon
subject CMC Meeting of 1/13/10 - Agenda Item 6.5 - Outline of Annual Report

The Community Monitor's Scope of Work includes the preparation of an Annual Report, "no later than the end of the contract period each year summarizing the CM's activities and the ALRRF's compliance record with respect to all applicable environmental laws and regulations."

Attached is a proposed topic outline for the report. This outline is based on the outline for the previous year's Annual Report, adapted to reflect current conditions. New topics are highlighted in pale yellow. 2008 topics that we intend to delete are highlighted in gray.

Feedback from Committee members, regarding topics to add, delete, emphasize or de-emphasize, would be welcome through the January 13 Committee meeting date. We propose to submit the report to City of Livermore staff by January 30, 2010. This should allow sufficient time to resolve and report on open issues regarding approval of gas monitoring probe installation, as well as any other topics raised by the Community Monitoring Committee.

Proposed Outline of Community Monitor Annual Report

Section 1 - Introduction

yellow indicates change from previous year

gray indicates deletion from previous year

Contractual Framework

Settlement Agreement

CMC Established; scope and limitations defined

CM established; scope and limitations defined

WMAC obligations related to CMC / CM

City of Livermore Role

staff support

contract management for CM

Prior Community Monitor efforts

time frame for Techlaw work

ESA/Treadwell and Rollo work in 2008 (brief list of key topics)

Overview of Landfill Operations

Primary Function: Safe Disposal of Solid Waste

General Regulatory Requirements

Isolate wastes from environment and the public

Basic requirements: cover, stability, etc.

Protect nearby water resources

Basic requirements: groundwater protection / monitoring, surface/storm water, etc.

Protect air quality

Basic requirements: dust, odor, landfill gas control; diesel emissions; other

Opportunities

Energy / fuels from landfill gas

Space for material processing & recovery

Public education

Industry trends

Landfills: fewer, larger, farther

Update on status of landfill expansions in region

Potential alternatives for San Francisco refuse

Rail haul

Vertical expansion

Constraints & opportunities unique to ALRRF

Mitigations from expansion EIR

Limited use for out-of-county wastes

Traffic restrictions

Limited footprint for refuse disposal

Natural resource protection

Proposed Outline of Community Monitor Annual Report

Update on status of permits for expansion

Settlement Agreement requirements

CMC / CM (described above)

Funding for education / mitigation

Setting and washed issues

Film plastics vs. wind conditions

Local policy: 75% diversion by 2010

Local disposal capacity tightening

Other

historic groundwater issues; how addressed; current status

April 2009 revisions to Waste Discharge Requirements

status of LFG to LNG

reduced activity & volume due to recession

Section 2 - Summary of CM Activities and Issues

Introduction

Three activity areas

Review of reports

Site Inspections

Class 2 Soils file review

Procedural matters

CM to contact ALRRF first if interested in contacting regulatory agency

Review of reports

Semiannual Groundwater monitoring report

Two reports reviewed

Three concerns:

confidence intervals used in statistical calculations

resolved after receiving information from WM staff

(stabilizing?) concentrations of nitrogen-rich substances in vadose zone

continue to watch

variations in concentrations at some monitoring wells

continue to watch

Annual Mitigation Status Report

One report reviewed

No issues

Semiannual Title V report

Two reports reviewed

Proposed Outline of Community Monitor Annual Report

Report format not amenable to easy analysis

No significant compliance issues apparent from report

Power failure incident: variance needed, but no violation

Gas system schematic, and gas consumption graph, developed

Monthly tonnage reports

12 reports reviewed

Refuse tonnages well below EIR / CUP limits

Substantial & variable amounts of Class 2 cover soil

Out-of-county tonnage increasing

Many categories of non-refuse material (examples)

Plant Debris Ordinance Compliance Plan

One report reviewed

No issues

Landfill Gas Probe Installation Report

One report reviewed

Open issues for three probes not yet installed; CIWMB and ALRRF are resolving

General issue: not easy to know if all reports submitted to regulators are provided to CM

Examples: LFG probe plan sent to LEA, not to CM; Title V report not sent

Need a mechanism for assurance

Check occasionally with permit agency staff?

Site Inspections

Monthly inspections at varying times and days

Table showing dates, announced / unannounced, with/without LEA

Typically, review of operations + emphasis on one area (gas system, stormwater, etc.)

No issues regarding refuse placement, public safety, traffic management

Staff / management seem candid & forthcoming

Problems, when noted, usually resolved by next inspection (typically sooner)

Various special operations on site are well defined and maintained

Most problems appear to arise in connection with non-routine aspects of operation

Windblown litter

Stormwater system capacity, in exceptional wet weather event

Class 2 soils file review

Over 100 files for 2009

Generally diligent and thorough efforts to characterize and classify materials

No issues noted regarding completeness of profiles

Proposed Outline of Community Monitor Annual Report

Section 3 - Anticipated Efforts and Issues

Introduction

Expect similar level of effort in three activity areas

Expansion area may require time to review agency submittals

Anticipated issues for review of reports

Groundwater monitoring methods

Vadose zone groundwater quality - continue to watch

Gas probe network - finalizing three probes

Status of mitigations - consider working more closely with County as expansion approaches

Monthly tonnage reports - out-of-County tonnages / sources

Method needed to assure CM sees all reports to which entitled

Anticipated issues for inspections

Increased emphasis on gas control system

Rapid change occurring: new wells, LNG plant

Closely related to groundwater quality

Complex regulatory framework

LNG plant construction: impact on operations?

Stormwater quality, especially Basin B

Windblown litter

LNG Plant monitoring procedure

Details of operations: drop & hook area, stormwater management, etc.

Anticipated issues for Class 2 soils file review

Need a systematic way to spread work load across year rather than surge at end

Anticipated issues for CM / CMC functioning

Hope to avoid extra time spent on report prep in 08 due to rescheduled meetings

THIS PAGE INTENTIONALLY BLANK