

Village of Rockport Strategic Plan Update and Community Transportation Strategy

Public Information Centre (PIC) #2

Thursday, December 12, 2019

6pm – 8 pm

Rockport Recreation Centre



Township of
Leeds and the
Thousand Islands

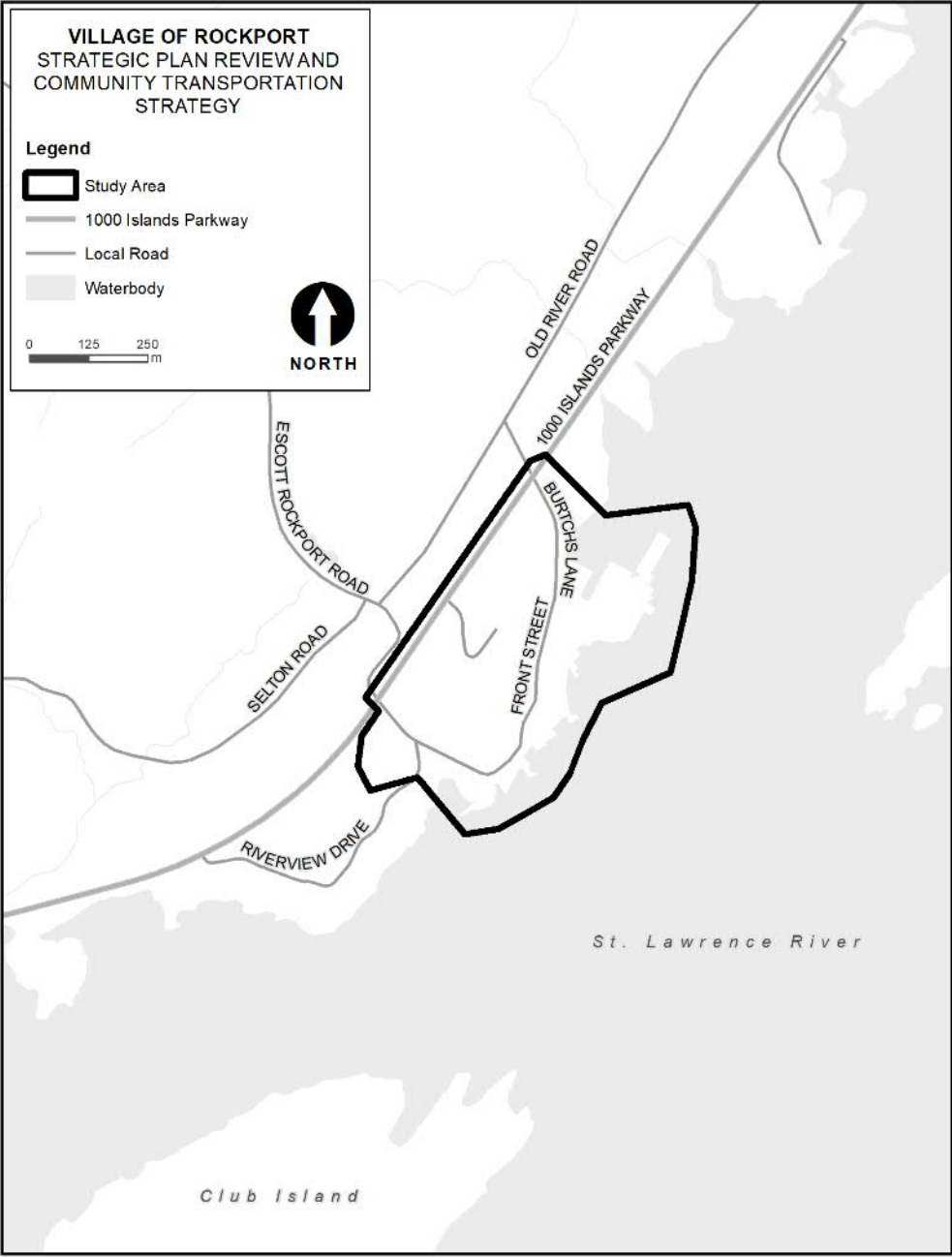
Agenda

1. Study area
2. Project process
3. PIC #1: What We Heard
4. Transportation assessment
5. Concepts
6. Next steps for project
7. Question period

Please hold questions until the end.

All information will be posted online for review.

Study Area



Process

Phase	Tasks
Phase 1 October	Review existing conditions (land use, transportation) Consult with public and stakeholders to understand their needs, concerns, and opportunities
Phase 2 December	Develop and evaluate alternative concepts to address the issues and opportunities identified Consult with public and stakeholders to review concepts and select preferred concept
Phase 3 February	Refine preferred concept based on public and stakeholder feedback Draft Strategic Plan and Community Transportation Strategy
Phase 4 March / April	Consult with public and stakeholders to review draft Finalize Strategic Plan and Community Transportation Strategy Present to Council

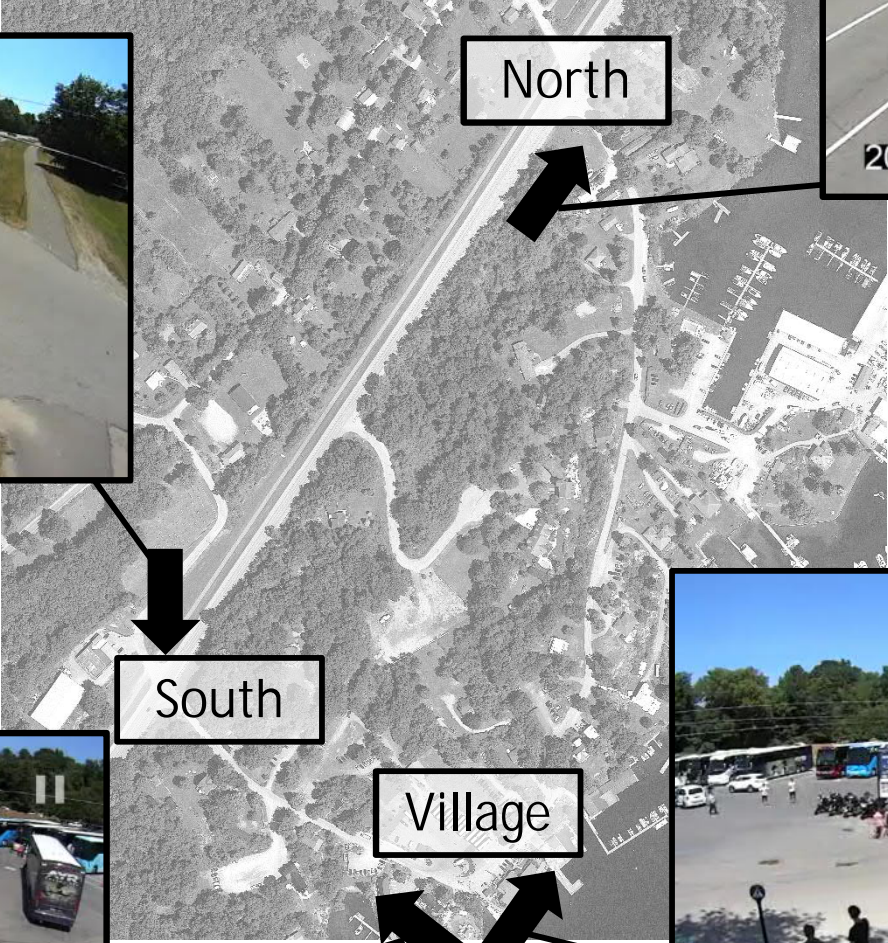
PIC #1: What We Heard

PIC #1 – What We Heard Summary

1. Lack of public parking
2. Lack of parking for contractors
3. Lack of boat trailer parking
4. Lack of privacy
5. Lack of public space
6. Lack of recreation space
7. Lack of bylaw enforcement
8. Too much traffic / congestion
9. Too many buses
10. Too much noise and air pollution
11. Too much new development
12. Concern about speed of traffic
13. Concern about access for emergency vehicles
14. Concern about quality of new developments
15. Concern about retaining heritage, character and charm
16. Concern about pedestrian and tourist safety
17. Concern about over-tourism
18. Concern about climate change
19. No sidewalks
20. No road widening
21. Boat launch should stay in Village
22. Boat launch should be moved

Transportation Assessment

Traffic Count Locations



Rockport PIC #2

Traffic Count Dates

- August long weekend
- Saturday, August 3, 2019 – 8 AM – 8 PM
- Sunday, August 4, 2019 – 8 AM – 8 PM
- Wednesday, August 7, 2019 – 8 AM – 8 PM
- Traffic counts summarized in 15-minute interval for pedestrians, cyclists, trucks and boat trailers, coach buses, and passenger cars
- Traffic counts were performed by computers and validated by staff at Dillon Consulting Limited

Pedestrians crossing the Parkway



2019-12-12

Rockport PIC #2

10

Pedestrian crossing warrant

Access	Volume	Saturday August 3rd	Sunday August 4th	Wednesday August 7th
Burtch's Lane (North Access)	Total traffic on parkway (12 hr)	3,590	4,080	2,515
	Pedestrians crossing parkway (12 hr)	30	25	20
	Pedestrian crossing warrant	Not warranted		
Escott Rockport Road (South Access)	Total traffic on parkway (12 hr)	3,590	4,080	2,515
	Pedestrians crossing parkway (12 hr)	100	254	13
	Pedestrian crossing warrant	Warranted		

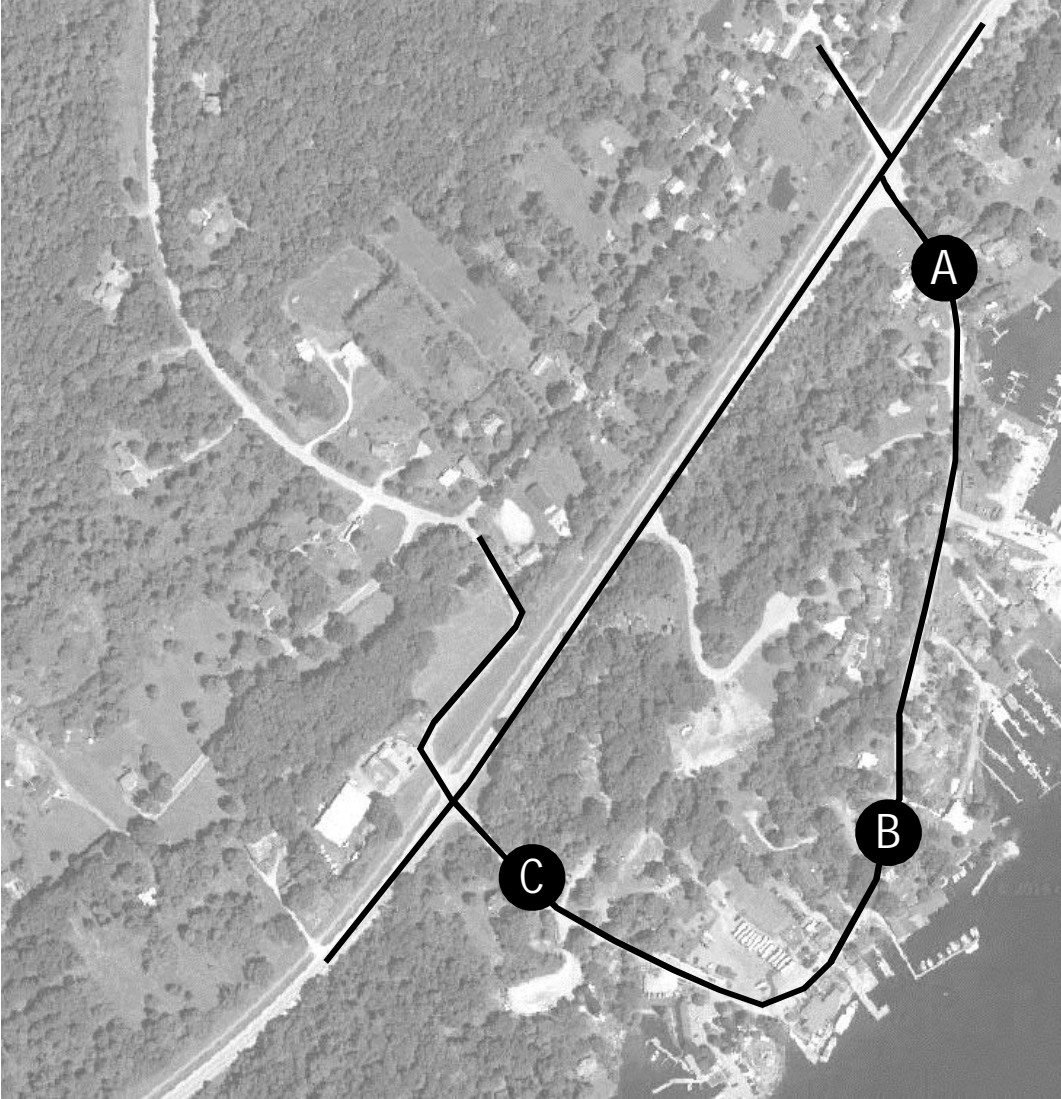
Pedestrian crossing



Traffic on Front Street

	Direction	12 hour traffic volumes		
		Saturday August 3 rd	Sunday August 4 th	Wednesday August 7 th
North Access (Burtch's Lane)	Into Village	392	500	293
	Out of Village	424	494	323
	Total	816	994	616
General Store	Eastbound	616	590	348
	Westbound	319	403	213
	Total	935	993	561
South Access (Escott Rockport Road)	Into Village	916	970	533
	Out of Village	769	975	450
	Total	1,685	1,940	983

Traffic on Front Street



12-hour traffic volumes on Front Street (total both directions)			
Location	Sat. Aug. 3	Sun. Aug. 4	Wed. Aug. 7
A	816	994	616
B	935	993	561
C	1,685	1,940	983

Public boat launch



Public boat launch



Public boat launch



Public boat launch



Public boat launch

	12-hour traffic counts		
	Sat. Aug. 3	Sun. Aug. 4	Wed. Aug 7
Boats launched	22	10	6
Boats retrieved	18	17	0
Total launched and retrieved	40	27	6
Max number of boat trailers queued	3	2	2

Boat trailer parking

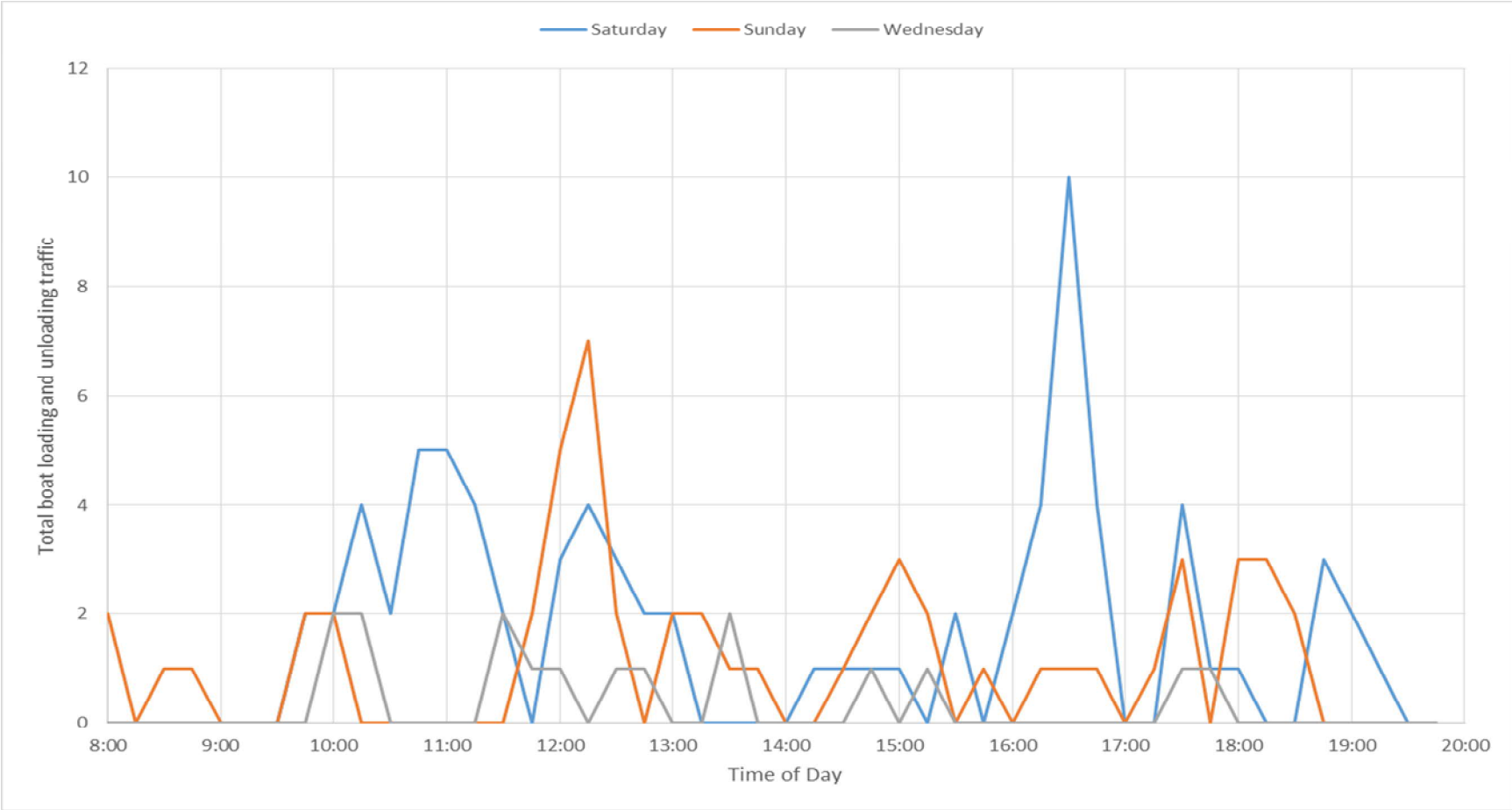


2019-12-12

Rockport PIC #2

20

Public boat launch (15-minute intervals) Loading and unloading



Coach buses



Coach buses



2019-08-04 :12:10:25:29

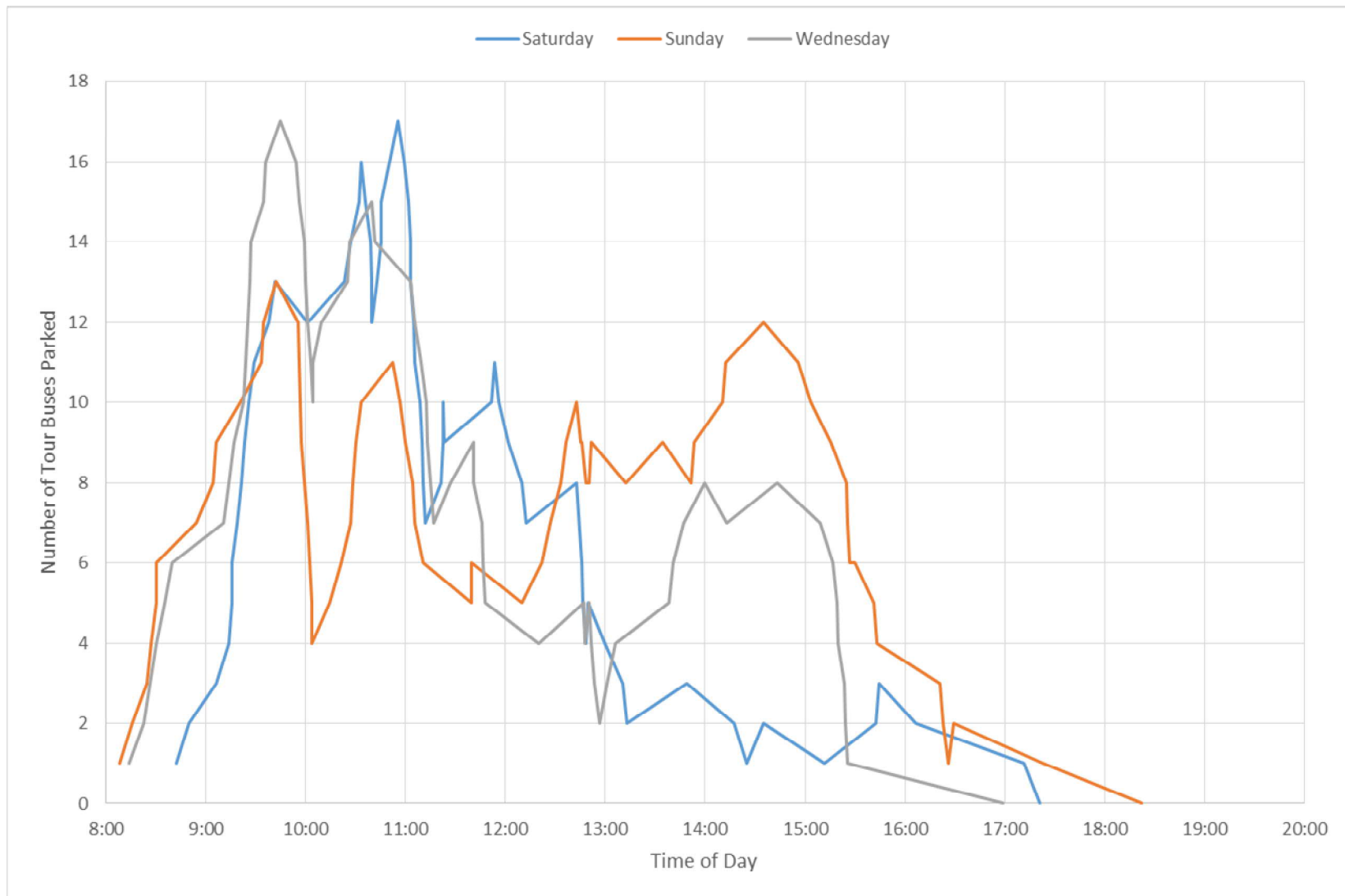
Coach buses



Coach buses

	12-hour traffic counts		
	Sat. Aug. 3	Sun. Aug 4	Wed. Aug. 7
Max number of coach buses parked	17	13	17
Daily coach buses trips (in and out of Village)	58 (3.5% of daily traffic)	59 (3% of daily traffic)	62 (6% of daily traffic)
Coach buses entering/exiting via Burtch's Lane	1	2	2
Peak 15 minute inbound	6	5	8
Peak 15 minute outbound	6	6	7
Peak hour inbound	12	8	10
Peak hour outbound	13	8	11

Parked coach buses



Pedestrians and cyclists in the Village



2019-12-12

Rockport PIC #2

27

Pedestrians and cyclists in the Village

Pedestrians

1. Limited pedestrian facilities
2. Pedestrians stand on the road which is unsafe and causes traffic issues
3. Pedestrians stand in the middle of the parking lot which is unsafe and causes traffic issues
4. Vehicles reversing near pedestrians is undesirable

Cyclists

1. Cyclists can feel unsafe when vehicles block roadway and other vehicles attempt to pass



Image source: Rockport Resident's Delegation letter

Transportation Assessment

- 2 or 3 questions now
- Please hold any unanswered questions until the end of the presentation

Rockport Village Land Use Concepts

A vision for the future

PIC #1 – Visioning

Theme 1: Shared Roadways	Theme 2: Water Access	Theme 3: Built Environment	Theme 4: A People Place
<ol style="list-style-type: none"> 1. Safe space for walking through Rockport and connecting to any future parking areas 2. No sidewalks 3. Areas that prioritize pedestrian movement 4. Shared roadway (all modes) 5. Cycling connection to parkway 6. Defined roadways / centreline to improve safety 7. Consideration for other ways to move vehicle traffic through the area and reduce idling (e.g. one-way, alternate access to parking lots) 	<ol style="list-style-type: none"> 1. An enhanced relationship to the water for residents and visitors 2. Improved access for swimming, fishing, boating, and interacting with nature 3. Boat ramp and dock for small vessels (e.g. up to 25 feet) 4. Highlight views to the water 	<ol style="list-style-type: none"> 1. More residential options 2. More local commercial opportunities (e.g. winter) 3. Maintain and enhance existing heritage character of buildings and landscape 4. Modernized infrastructure 5. Aesthetically pleasing and use of high quality materials 6. Use of permeable materials 7. Parking for residents 8. Day-use parking for the public, including boat trailers 	<ol style="list-style-type: none"> 1. Peaceful village environment 2. Clean air and land 3. Clear delineation of public and private lands 4. Landscaping and shade 5. Flexible park space for the public and visitors (e.g. space for markets) 6. Public park

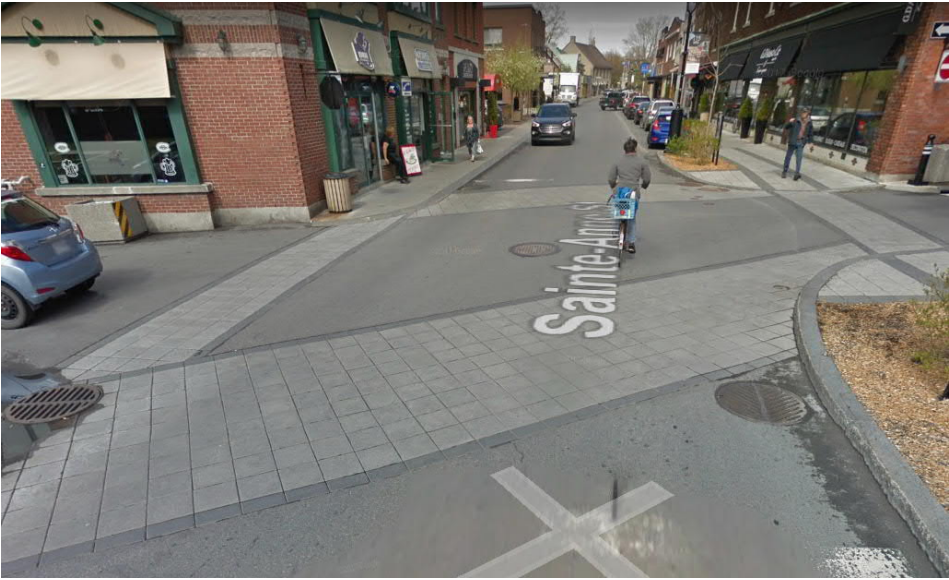
Pedestrian crossing



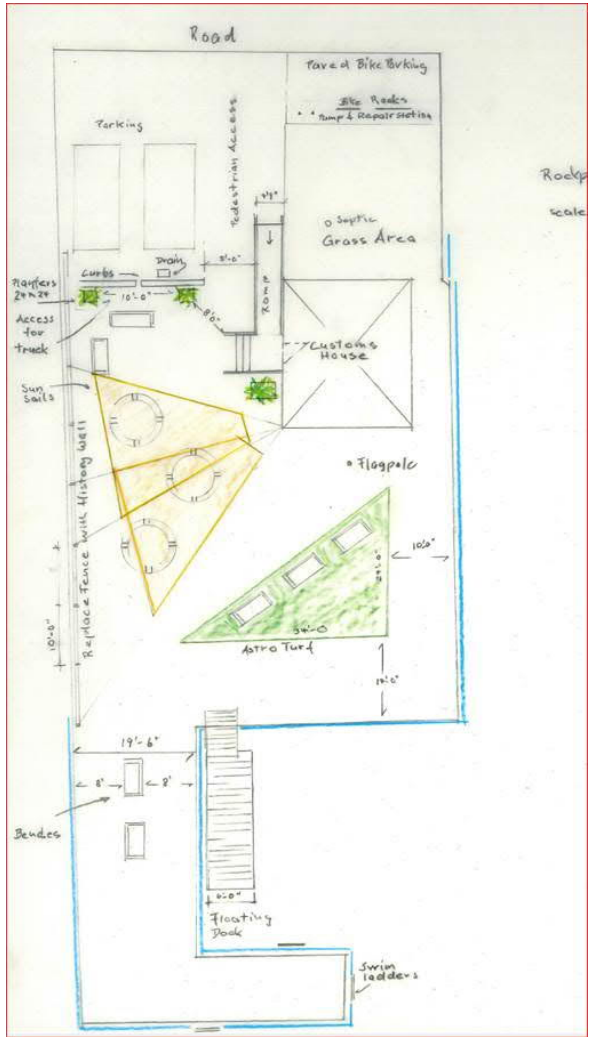
Bus Staging



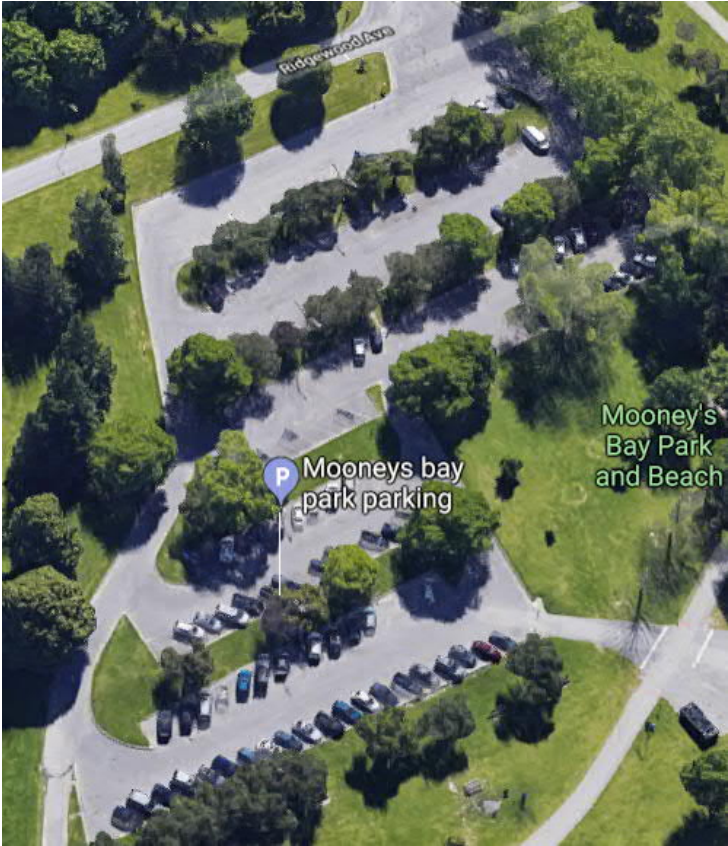
Pedestrian Priority Area



Waterfront Parkette



Tiered Parking



Pedestrian Space



2019-12-12

Rockport PIC #2

37

Potential solutions

Issues		Traffic flow	Residents safety	Tourist safety	Public parking	Boat trailer parking	Boat launch	Emergency response	Climate change	Noise pollution	Air pollution	Economic development	Contractors	Recreation	Privacy	Heritage	Hamlet feel
Parkway	Pedestrian crossover	-	+	+	+	+		-	+	+	-	+	+	+			
	Reduce speed limit		+	+					+	+				+			
Boat trailer parking	Add parking in Village				-	+				-	-	-	+	-	-	-	-
	Add parking north of Parkway				-	+						-	+				
Boat launch	Improve existing	-					+	-					-				
	Relocate within Village		+	+	-		+	+			-		+		-	-	-
	Move out of Village	+	+	+		+	+	+		+	+	+	+	+	+	-	
Front Street	Widen	+	+	+	+			+				+			-	-	-
	Convert to one-way	+	+	+	+			+	-	-	-	-			-	+	-
	Reduce speed limit		+	+													
	Create pedestrian facilities	+	+	+				+						+			
	Pavers	+	+	+												+	-
	Concrete sidewalks	+	+	+	+			-								-	-
Shade structures		+	+		-		-	+					+			-	
Public parking	St. Brendan's Church parking lot	+	+	+	+												
	Community Centre parking lot	+	+	+	+	-											
	On-street perpendicular parking	-			+		-	-				+		-			
Tourism operations	Convert "exit only" to "entrance only"	+	+	+			+	+		+	+	+		+	+	+	+
	Create tiered parking	+		+													
	Create new parking lot exit	+	+	+			+	+		+	+	+		+	+	+	+
	Prohibit coach bus parking in Village				-	-				+	+	+		+			+
	Create bus drop off loop	+		+													
Create pedestrian crossing area	+		+														
Customs dock	Create waterfront parkette								+					+		+	+
	Create shaded areas													+			+
Signage and wayfinding	Add wayfinding signage	+	+	+	+	+	+					+		+	+	+	
	Add interpretive signage								+			+		+		+	

Concept A



A	Potential public parking (partnership)
B	Curbing/Future development potential
C	Bus staging (loading/unloading)
D	Public boat launch moved (long term)
E	Pedestrian priority area
F	Waterfront parkette (Customs dock)
G	Tiered boat lines parking
H	Potential boat trailer parking (partnership)
I	Local traffic – Road widening, curbing, pedestrian space
J	Single point of access (signage)

Offsite, location TBD: Municipal Coach Bus Parking Area; New Public Boat Launch

Concept B



A	Potential public parking (partnership)
B	Curbing/Future development potential
C	Bus staging (loading/unloading)
D	Public boat launch moved (long term)
E	Waterfront parkette
F	Tiered boat lines parking
G	Potential boat trailer parking (partnership)
H	Local traffic -- Road widening, curbing, pedestrian space
I	Single point of access (signage)

Offsite, location TBD: Municipal Coach Bus Parking Area; New Public Boat Launch

Summary of concepts

Common to Concepts A & B:

- Relocate public boat launch (long term)
 - Removes pedestrian and vehicle conflicts on Front Street
 - New location to provide sufficient parking for islanders, public, and contractors
- Develop municipal coach bus parking lot outside of main Village area (long term)
 - Create alternate location for bus parking
- Widen public right of way and provide curbing and pedestrian facilities along Front Street
- Modify boat line's parking area
 - Vehicles enter parking area at top of hill
 - Vehicles and buses exit parking area away from pedestrian activity
- Develop parking lot north of Parkway for boat trailer parking
- Addition and enhancement of public parking facilities
- Add sidewalk from Parkway to Community Centre
- Provide wayfinding signage to direct vehicles and pedestrians

Summary of concepts

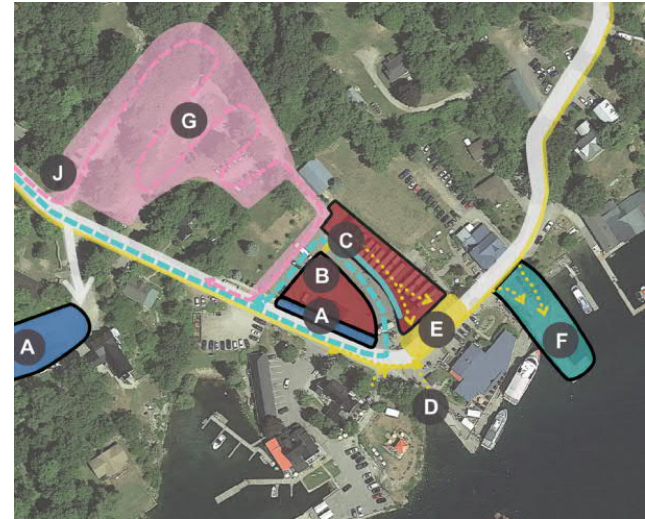
Differences between A and B:

Concept A:

- Pedestrian priority area
- Fewer conflict areas between buses and pedestrians
- Less public parking space

Concept B:

- Additional public parking space
- Larger space reserved for future development of the parking lot
- Less pedestrian space



Next Steps

- We want your feedback on the concepts
- One concept will be further developed as a “preferred concept”, incorporating your feedback
- We’ve allowed for a commenting period that will run until Wednesday, January 15
 - All materials will be available online at: leeds1000islands.ca/Rockport
 - Comments can be submitted to rockportplan@leeds1000islands.ca
- Next Steps:

Phase 3 Refine preferred concept based on public and stakeholder feedback

February Draft Strategic Plan and Community Transportation Strategy

Phase 4 Consult with public and stakeholders to review draft
Finalize Strategic Plan and Community Transportation Strategy
March / April Present to Council

Questions and Comments

Thank you for attending!

Please contact us & stay involved.

<http://leeds1000islands.ca/rockport>
RockportPlan@townshipleeds.on.ca

Facebook, Twitter

If you have any comments or questions about the project, please reach out to the project team.

Comments will be accepted until January 15, 2020

Marnie Venditti
Director, Planning and Development
mvenditti@townshipleeds.on.ca
613-659-2415 ext. 212



Township of
Leeds and the
Thousand Islands

Monica Belliveau
Project Manager
mbelliveau@dillon.ca
613-745-2213 ext. 3044

