



52L LINEAR SPECIFICATION SHEET

OVERVIEW

Architectural luminaires proudly built in America since 1935. The 52L series is a linear luminaire specifically designed for data centers and central offices.

Available in lengths from 1'-8" in single fixture or join-able for continuous row runs with our rapid quick connect that cuts install time by up to 80%. Three standard lumen packages available with custom capabilities as well up to 1800 lumen's per foot. Standard finish is satin anodized with powder coat white or black options available upon request.

KEY FEATURES

- **BABAA Compliant**
Hand crafted in California
- **L70>72,000 hours**
High quality electrical components
- **80+ CRI Standard**
High definition color rendering
- **<3SDMC consistency**
Uniform color consistency
- **124+ Lumens per watt**
Efficient performance delivered

DETAILS

01 Housing

Extruded aluminum body powder coated or anodized finish. Extruded high diffusion acrylic lens. Aluminum end caps with no visible fasteners.

02 Electrical

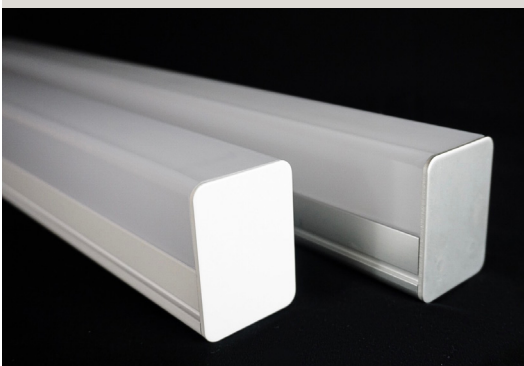
Integral 120/277V driver standard. If 0-10V dimming is specified 100-1% is standard. Integral battery backups are also available.

03 LED Array

High quality Samsung chips, delivering 124+ lumens per watt on the system level, mounted on an aluminum heatsink for thermal management.

04 Mounting options

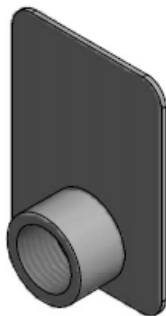
Surface(ceiling or wall) mount / strut hanger / Tate or Gordon grid / 3/8 and 5/8 all thread quick connect hangers. Single tool Installation.



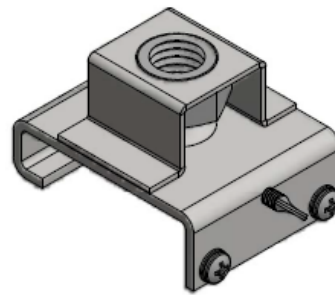
BUILD A PART NUMBER

| • SERIES | • LIGHT OUTPUT | • CCT | • LENGTH IN INCHES | • WIRING PATTERN | • OPTIONS |
|----------|---|--|--|---|---|
| • 52L | | | | | |
| • 52L | <ul style="list-style-type: none"> • N NORMAL • H HIGH • V VERY HIGH | <ul style="list-style-type: none"> • 30K • 35K • 40K • 50K | <ul style="list-style-type: none"> • 24 • 36 • 48 • 60 • 72 • 84 • 96 | <ul style="list-style-type: none"> • -0 • -1 • -3 • -10** • -11** • -12** | <ul style="list-style-type: none"> • D11: 1% 0-10V DIMMING • EM : 10W INTEGRAL BATTERY • OCC: PIR OCCUPANCY SENSOR • NXSP: HUBBELL PIR OCCUPANCY/ DAYLIGHT SENSOR |

- RELATED COMPONENTS ORDERED SEPERATELY
- NOTE: TYPICALLY 2 HANGERS RECOMMENDED PER FIXTURE / 1 BLANK AND 1 FEED PER ROW



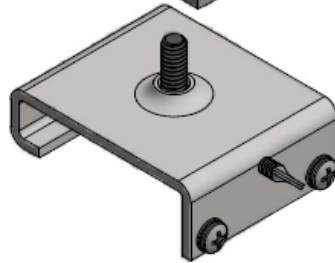
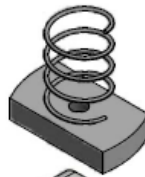
P/N: 52L01
Feed end cap w/
1/2" threaded hub



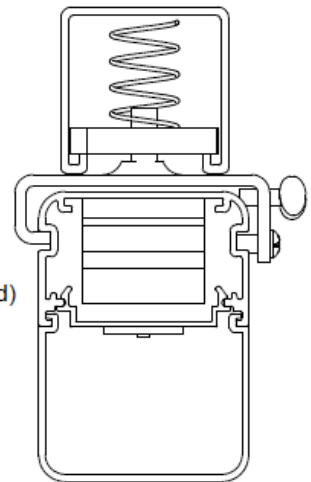
P/N: 5202-3/8D or 5202-5/8D
hanger bracket for 3/8 or 5/8
all-thread drop rod



P/N: 5210B
Blank end cap



P/N: 5202U
Strut hanger
(Left: whats included)
(Right: how it looks installed)

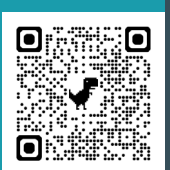


CONTACT US!

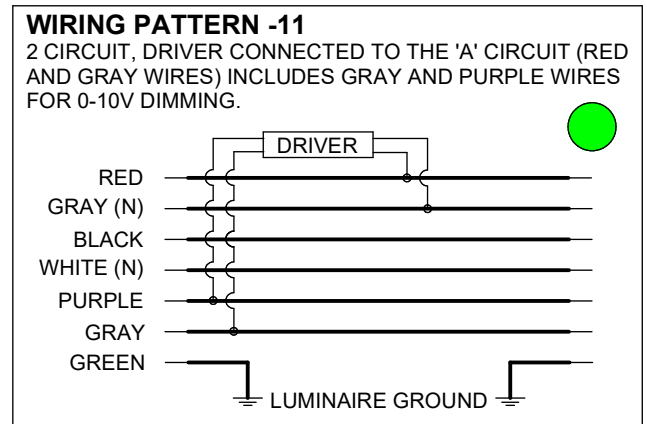
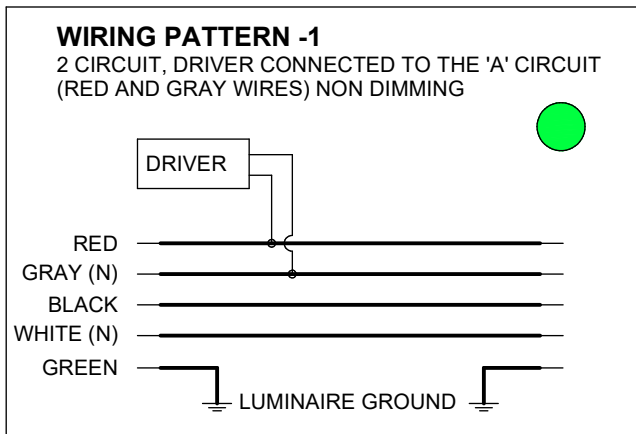
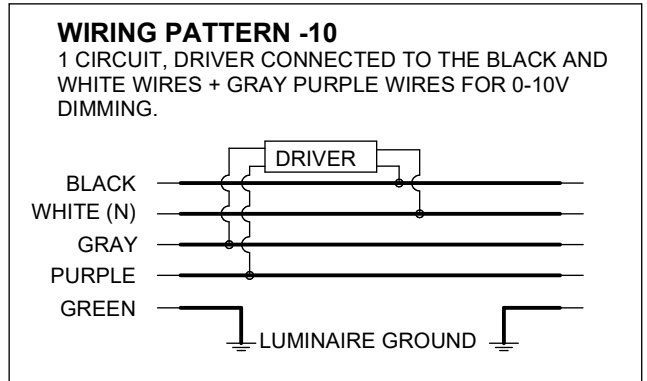
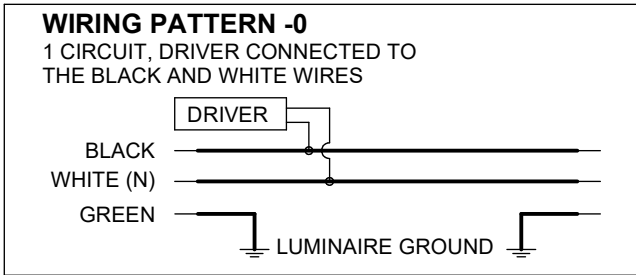
www.airey-thompson.com

Phone: 800.421.6196

E-mail: contactus@aireythompson.com

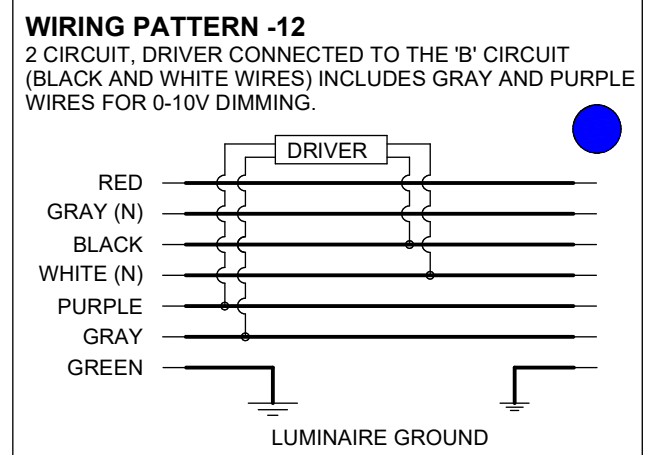
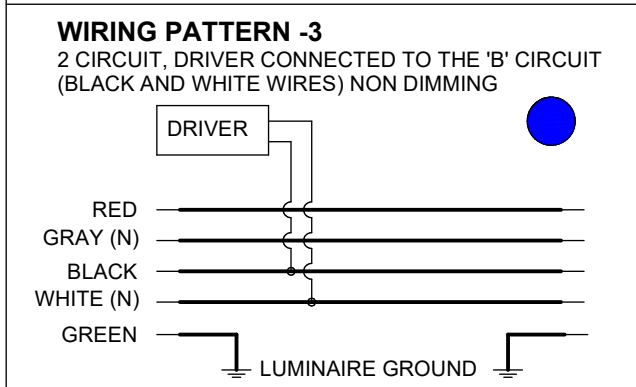


Wiring pattern options



↕ SUITABLE PAIR ↗

↕ SUITABLE PAIR ↗



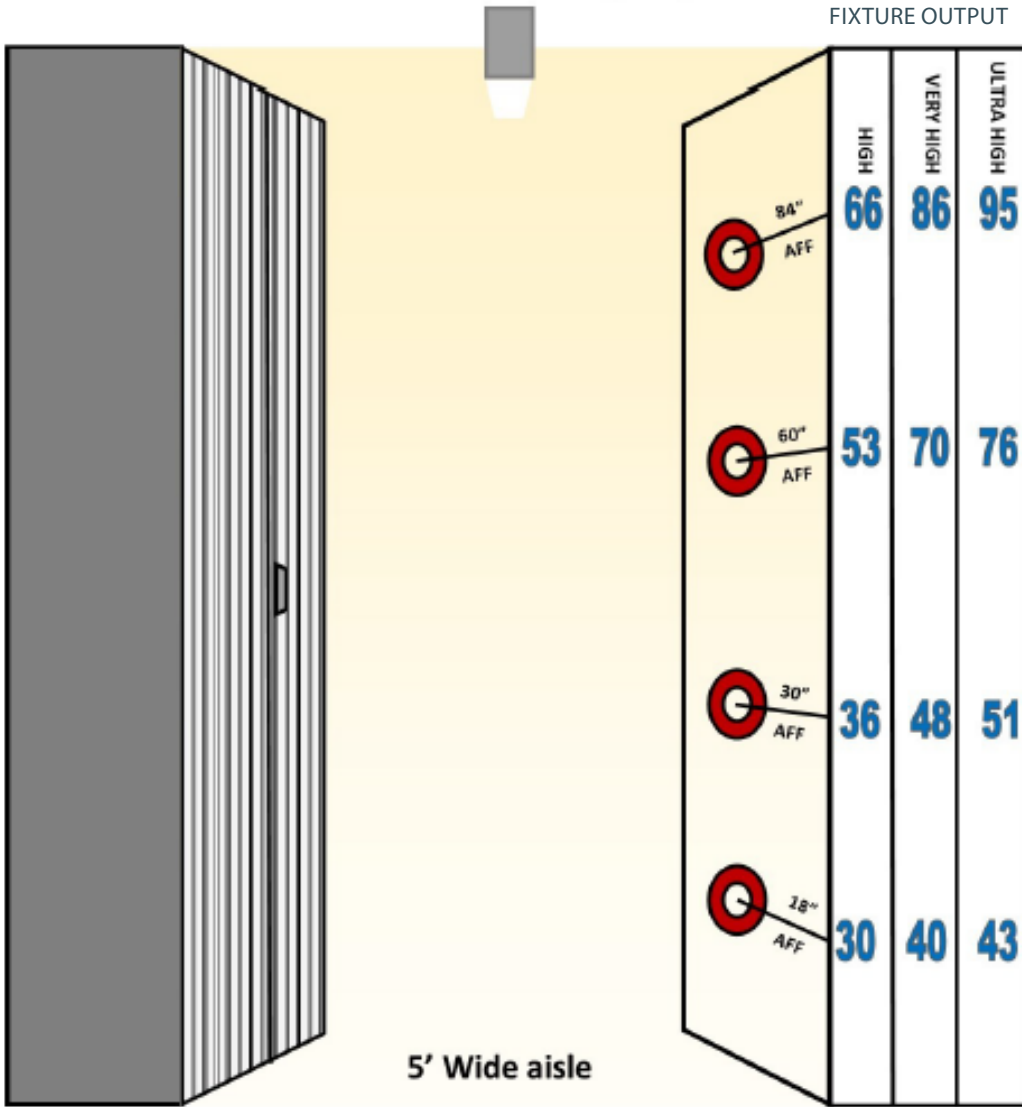
Example layout of dual circuit continuous row aisle



• LIGHT OUTPUT SELECTION GUIDE

• 9' LUMINAIRE MOUNTING HEIGHT

• FOOT CANDLES BY
FIXTURE OUTPUT



• ADVANCED OPTICAL DESIGN RESULTS IN MORE EVEN ILLUMINATION OF YOUR CABINETS FROM TOP TO BOTTOM THAN THE COMPETITION

• CONSULT FACTORY FOR FOOT CANDLE MEASUREMENTS ON LUMINAIRE MOUNTING HEIGHTS UP TO 12'

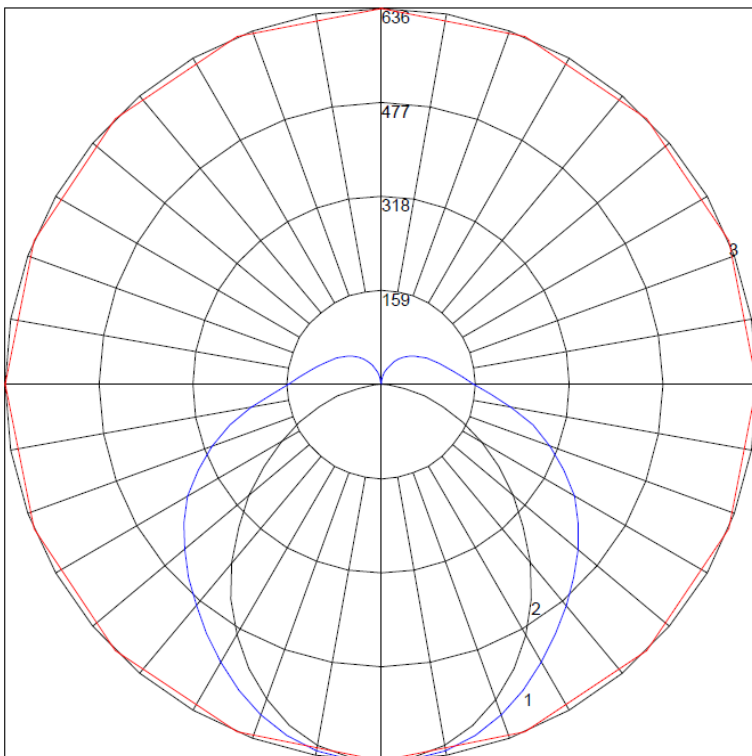
CERTIFICATION / WARRANTY



ETL Listed for dry or damp locations



PHOTOMETRIC PERFORMANCE



| • OAL LENGTH | • FIXTURE WATTAGE | • LUMENS |
|-----------------|-------------------|----------|
| • 24" NORMAL | • 10 | • 1233 |
| • 48" NORMAL | • 20 | • 2466 |
| • 96" NORMAL | • 40 | • 4932 |
| • 24" HIGH | • 14 | • 1733 |
| • 48" HIGH | • 28 | • 3466 |
| • 96" HIGH | • 56 | • 6932 |
| • 24" VERY HIGH | • 19.4 | • 2314 |
| • 48" VERY HIGH | • 38.8 | • 4628 |
| • 96" VERY HIGH | • 77.6 | • 9256 |

• [IES File link](#)

• [installation instructions link](#)