



# 61L LINEAR SPECIFICATION SHEET

## OVERVIEW

Architectural luminaires proudly built in America since 1935. The 61L series is a linear luminaire available in lengths from 1'-8' in single fixture or joinable for continuous row runs. Three standard lumen packages available with custom capabilities as well up to 1800 lumens per foot. Standard finish options include powdercoat white or black or satin anodized with custom options available upon request.

## KEY FEATURES

- **BABAA Compliant**  
Hand crafted in California
- **L70>72,000 hours**  
High quality electrical components
- **90+ CRI Standard**  
High definition color rendering
- **<3SDMC consistency**  
Uniform color consistency
- **100 Lumens per watt**  
Efficient performance delivered

## DETAILS

### 01 Housing

Extruded aluminum body powder coated or anodized finish. Extruded high diffusion polycarbonate lens. Aluminum end caps with no visible fasteners.

### 02 Electrical

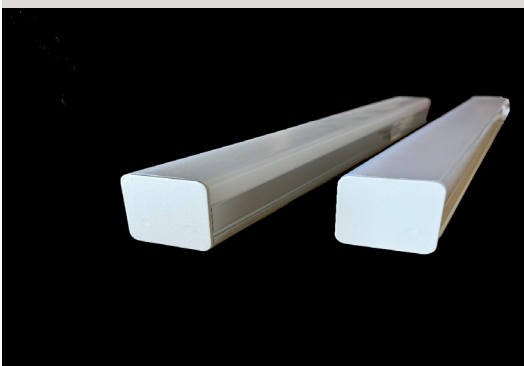
Integral 120/277V driver standard. If 0-10V dimming is specified 100-1% is standard. Integral battery backups are also available.

### 03 LED Array

High quality Samsung chips, delivering 100 lumens per watt on the system level, mounted on an aluminum heatsink for thermal management.

### 04 Mounting options

Surface(ceiling or wall) mount / suspended by aircraft cable / strut hanger



# BUILD A PART NUMBER

• SERIES	• LIGHT OUTPUT	• CCT	• LENGTH IN INCHES	• HOUSING COLOR	• OPTIONS
• 61L					
• 61L	<ul style="list-style-type: none"> <li>• N NORMAL</li> <li>• H HIGH</li> <li>• V VERY HIGH</li> </ul>	<ul style="list-style-type: none"> <li>• 27K</li> <li>• 30K</li> <li>• 35K</li> <li>• 40K</li> <li>• 50K</li> </ul>	<ul style="list-style-type: none"> <li>• 24</li> <li>• 36</li> <li>• 48</li> <li>• 60</li> <li>• 72</li> <li>• 84</li> <li>• 96</li> </ul>	<ul style="list-style-type: none"> <li>• 0 SATIN</li> <li>• 3 WHITE</li> <li>• 5 BLACK</li> <li>• CUSTOM</li> </ul>	<ul style="list-style-type: none"> <li>• D11: 1% 0-10V DIMMING</li> <li>• EM: 10W INTEGRAL BATTERY</li> <li>• OCC: PIR OCCUPANCY SENSOR</li> <li>• CH: AIRCRAFT CABLE AND POWER CORD</li> <li>• SH: STRUT HANGERS</li> </ul>

## CERTIFICATION / WARRANTY

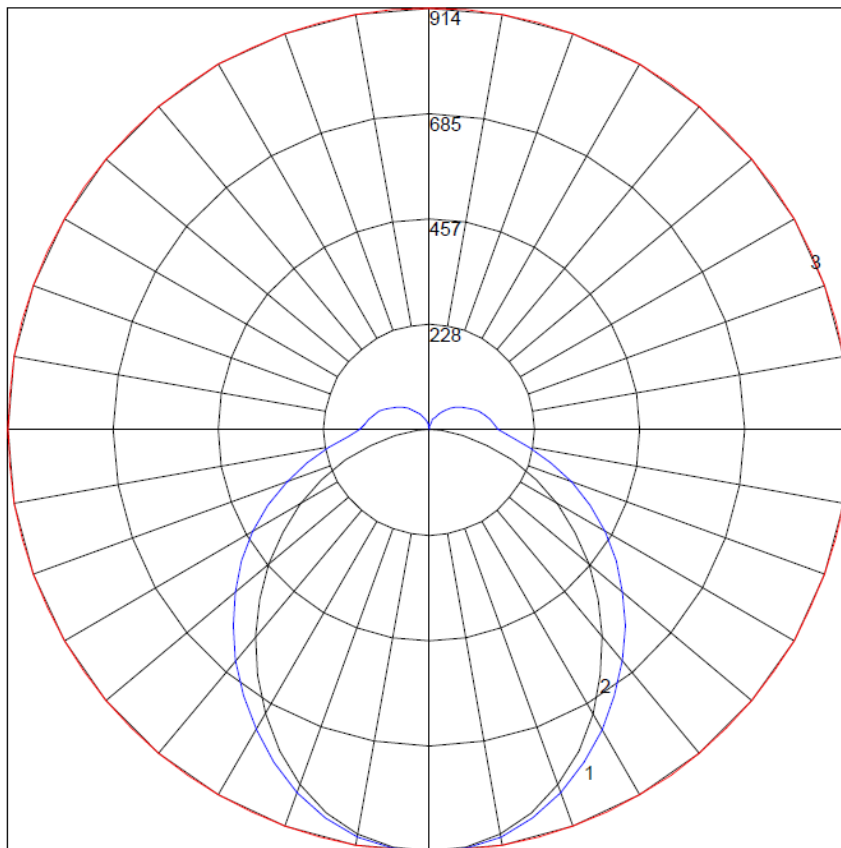


ETL Listed for dry or damp locations

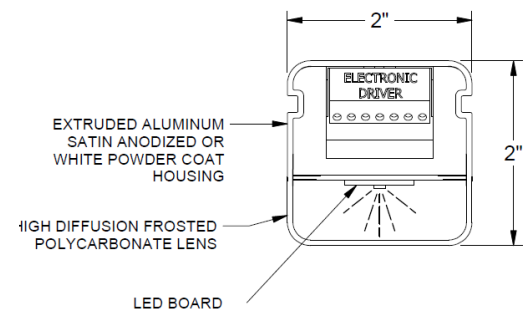


• \* MICROWAVE SENSOR HAS DARK SPOT ON LENS

## PHOTOMETRIC PERFORMANCE



• OAL LENGTH	• FIXTURE WATTAGE	• LUMENS
• 24" NORMAL	• 10	• 1000
• 48" NORMAL	• 20	• 2000
• 96" NORMAL	• 40	• 4000
• 24" HIGH	• 14	• 1400
• 48" HIGH	• 28	• 2800
• 96" HIGH	• 56	• 5600
• 24" VERY HIGH	• 19.4	• 1940
• 48" VERY HIGH	• 38.8	• 3880
• 96" VERY HIGH	• 77.6	• 7760



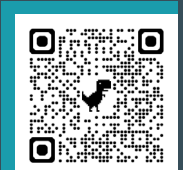
• [IES File link](#) • [installation instructions link](#)

## CONTACT US!

www.airey-thompson.com

Phone: 800.421.6196

E-mail: [contactus@aireythompson.com](mailto:contactus@aireythompson.com)



• 61-CUT-24A