

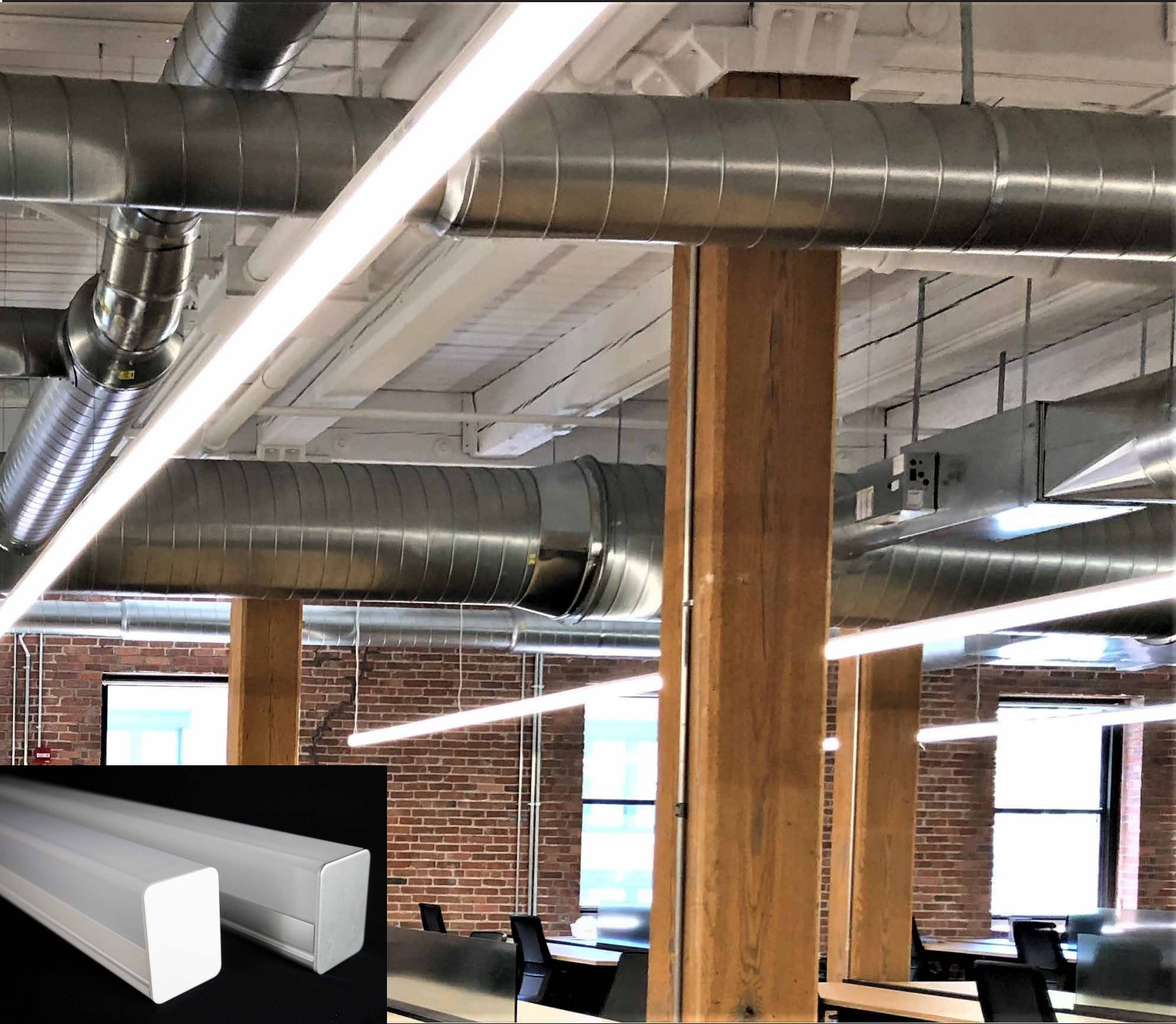


AIREY-THOMPSON™
Manufacturing Quality Luminaires

**62L SERIES LED
ARCHITECTURAL GRADE**

CABLE SUSPENDED/SURFACE MOUNT
SMALL CROSS SECTION LUMINAIRES

MADE IN USA



**HANDCRAFTED
IN THE USA**

BABA COMPLIANT

120/277v



Integral Driver



Intertek



**COLOR
CONSISTENCY
<3 SDMC**

L70>72,000

80+CRI

90+AVAIL.



AIREY-THOMPSON™
Manufacturing Quality Luminaires

**62L SERIES LED
ARCHITECTURAL GRADE**

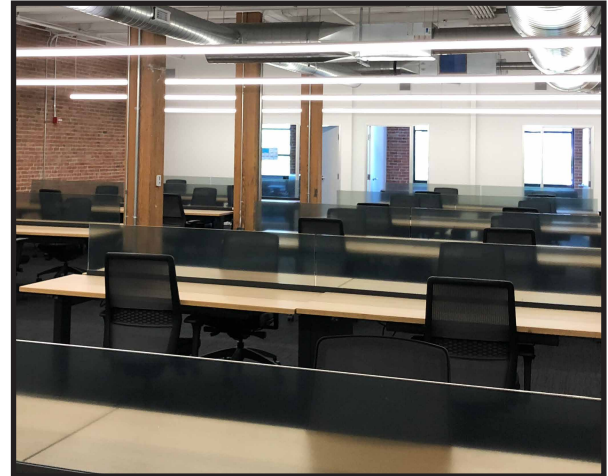
CABLE SUSPENDED/SURFACE MOUNT
SMALL CROSS SECTION LUMINAIRES

MADE IN USA

SPECIFICATIONS

LED ARRAY

High density LED arrays are used to maximize visual appeal. Only premium quality Samsung LED chips are used and are available in 2700K, 3000K, 3500K and 4000K with a tested CRI of 85, 90+ is available. Arrays are mounted to an aluminum cover for superior thermal management to extend LED life. Color consistency < 3SDCM



CONSTRUCTION

Extruded aluminum housing and LED mounting with three standard finish options: Satin anodized, Powdercoat White and Black. Lens is extruded frosted, high impact acrylic. Aluminum end caps with no visible fasteners.

ELECTRICAL

Integral 120/277V, 10% 0-10V dimmable drivers are standard. 1% 0-10V dimming driver optional.

warranty

luminaire warranted for 5 years of manufacturing.

PERFORMANCE

124 Lumens per watt for 3000K. Three standard light output options: Normal 5 watts and 616 lumens per foot, High 7 watts and 866 lumens per foot, Very high 10 watts and 1160 lumens per foot. Custom lumen programming available.




AIREY-THOMPSON™
Manufacturing Quality Luminaires

**62L SERIES LED
 ARCHITECTURAL GRADE**

CABLE SUSPENDED/SURFACE MOUNT
 SMALL CROSS SECTION LUMINAIRES

MADE IN USA

**BUILD YOUR
 FIXTURE**

How to build a part number	Product Series	Light Output	Color Temperature	Length in Inches	Housing Color	Dimming	Options
Part number format	62L	N	40K	48	-0	-D11	-EM -CH6
Choices	62L	N= Normal H= High V= Very High Custom: specify total lumens per foot	27K 30K 35K 40K	24 36 48 60 72 84 96 <small>specify total run length</small>	-0= Satin -3= White -5= Black Custom	-D10 10% 0-10V -D11 1% 0-10V	-EM = 10W battery backup -CH3 = 3 wire power cord and 48" aircraft cable* -CH5 = 5 wire power cord and 48" aircraft cable* -CH6 = 6 wire power cord and 48" aircraft cable* -SH = Pair of strut hangers* -90CRI = 90+ CRI -OCC = Occupancy sensor  -NXSPL = Hubbell NX BT PIR occupancy/daylight low mount sensor and in-fixture module -NXWE = Hubbell NX wireless enabled with in-fixture module -NXSPWL = Hubbell NX Wireless with PIR occupancy/daylight low mount sensor (Consult factory for other sensor/controls options)

SUSPENDED MOUNTING OPTIONS EXPLAINED:

-CH3: What is this? This is a feed cable set for use with phase dimming or non-dimming applications. What's included: 2ea. low profile white canopies, 2ea. 48" x 1/16" aircraft cables, 1ea. 3 wire power feed and adjustable cable grippers.

-CH5: What is this? This is a feed cable set for use with 0-10V dimming applications
 What's included: 2ea. low profile white canopies, 2ea. 48" x 1/16" aircraft cables, 1ea. 5 wire power feed and adjustable cable grippers.

-CH6: What is this? Same as -CH5, but has an additional wire for the unswitched circuit necessary for a battery backup.

-SH: What is this? This option allows for direct mounting to strut in open ceiling environments
 What's included: 2 unistrut hanger brackets and spring nuts to mount anywhere along the fixture housings hanger groove.

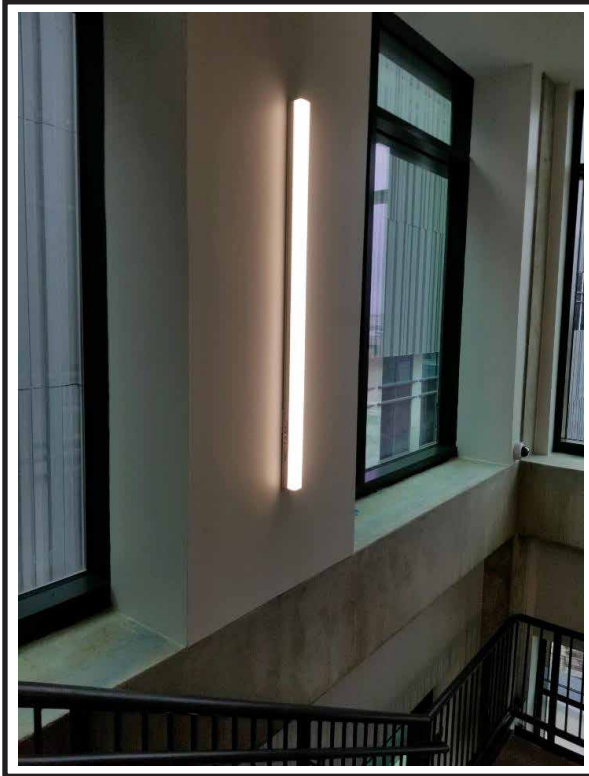


AIREY-THOMPSON™
Manufacturing Quality Luminaires

**62L SERIES LED
 ARCHITECTURAL GRADE**

CABLE SUSPENDED/SURFACE MOUNT
 SMALL CROSS SECTION LUMINAIRES

MADE IN USA

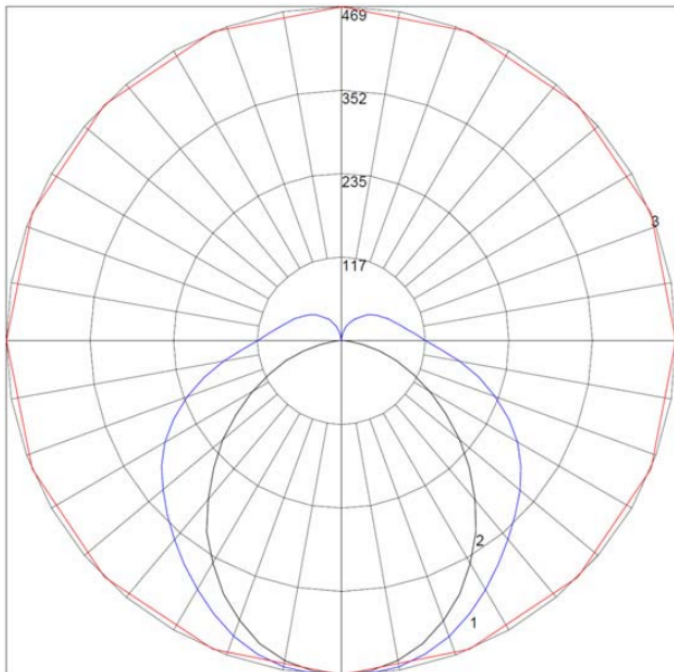


NORMAL LEVEL FIXTURES**		
OAL LENGTH	FIXTURE WATTAGE	LUMENS
24"	10	1233
48"	20	2466
96"	40	4932

HIGH LEVEL FIXTURES**		
LENGTH	FIXTURE WATTAGE	LUMENS
24"	14	1733
48"	28	3466
96"	56	6932

VERY HIGH LEVEL FIXTURES**		
LENGTH	FIXTURE WATTAGE	LUMENS
24"	19.4	2314
48"	38.8	4628
96"	77.6	9256

**Values approximate, based on 3000K LEDs



(Polar graph for 62LH30K24)
 Consult website or factory for .ies and photometrics

