

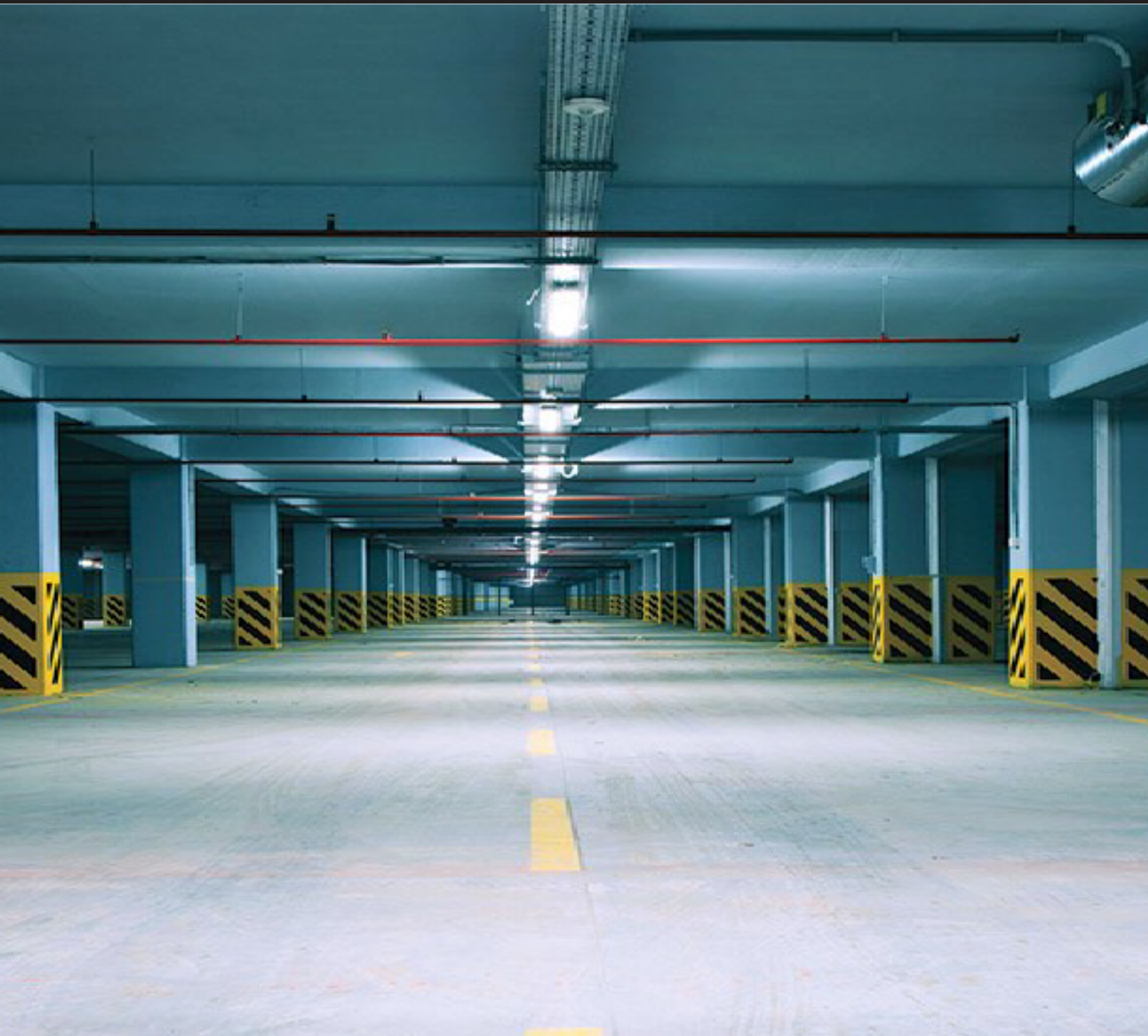


**AIREY-THOMPSON**<sup>TM</sup>  
*Manufacturing Quality Luminaires*

**81L SERIES LED  
LINEAR WEATHER-  
PROOF**

DROP ROD / SURFACE MOUNT

**MADE IN USA**



**HANDCRAFTED  
IN THE USA**

**BABA COMPLIANT**



***NEMA 4X***



**116 LUMENS  
PER WATT**

**120/277v**



**Integral Driver**



**COLOR  
CONSISTENCY  
<3 SDMC**

**L70>72,000**

**80+CRI**

**90+AVAIL.**



**AIREY-THOMPSON™**  
*Manufacturing Quality Luminaires*

**81L SERIES LED  
 LINEAR WEATHER-  
 PROOF**

DROP ROD / SURFACE MOUNT

**MADE IN USA**

**BUILD YOUR FIXTURE**

| How to build a part number | Product Series | Light Output  | Color Temperature | Length in Inches | Lens Type                                       | Typical extra charge options<br>Suffix part # as required in the sequence below  |
|----------------------------|----------------|---|-------------------|------------------|---|--|
| Part number format         | 81L            | N   | 40K               | 48               | -2  | -SS -MB  |
| Choices                    | 81L            | N (Normal) 1040 LMFT<br>H (High): 1490 LMFT<br>(Custom): Specify LUMENS | 35K<br>40K<br>50K | 48 Nominal       | -2= Smooth Frosted ACR<br>-3= Ribbed Frosted PC | -SS Stainless steel lens latch upgrade<br>-MB Mounting bracket for surface mount wall mounting bracket 45 degree<br>-MBA Pendant mounting bracket for 3/8" drop rod<br>-MBC Cable suspended mounting bracket<br>-EP Endplug black<br>-EM Battery Backup<br>-MS internal Microwave sensor |

**FEATURES AND BENEFITS**

**CONSTRUCTION:**

Wide UL5VA fiberglass housing will not melt or burn. 100% impact modified frosted acrylic lens. Poured in place, closed cell foam gasket

**WARRANTY:**

5 year limited warranty, see Airey-Thompson distributor terms and conditions for more details

**CERTIFICATIONS:**

NSF, NEMA 4X, IP65, IP66, IP67, ROHS, ETL.

**Ideal for:**

warehouses, parking structures, cold storage, outdoor structures, food processing, offshore and more

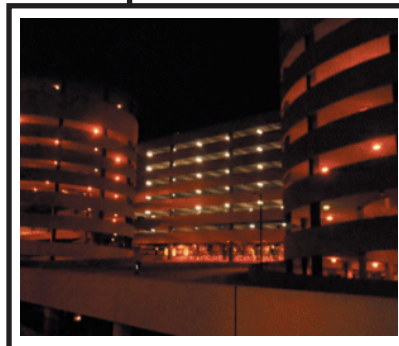
**VOLTAGE:**

Equipped with integral 120/277v FCC approved driver, 10% 0-10v dimmable standard, other options maybe available.

**MOUNTING: 4**

Mounting type brackets optionally available

Several lumen/wattage packages to chose from (**SEE LUMEN CHART BELOW FOR DETAILS, FACTORY IS HAPPY TO DISCUSS YOUR UNIQUE LUMEN REQUIREMENTS**)



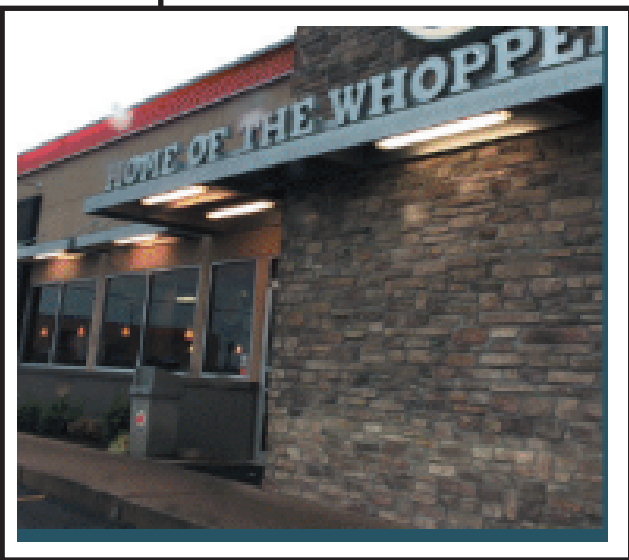
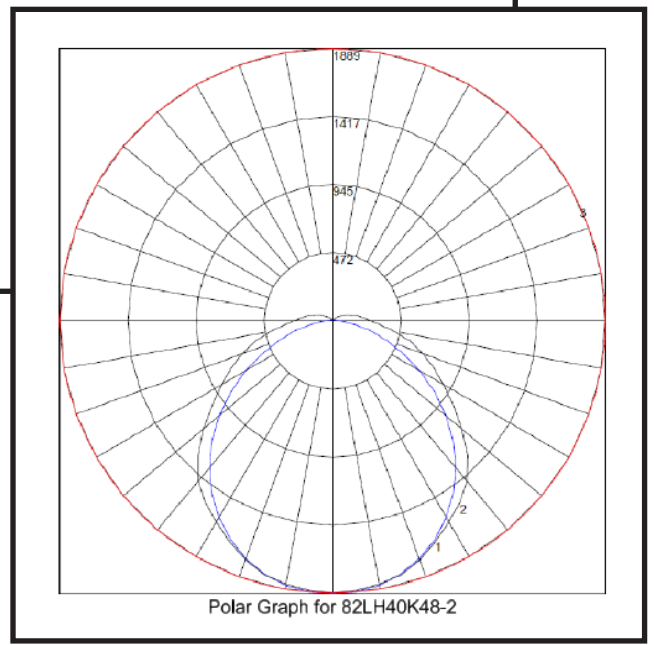
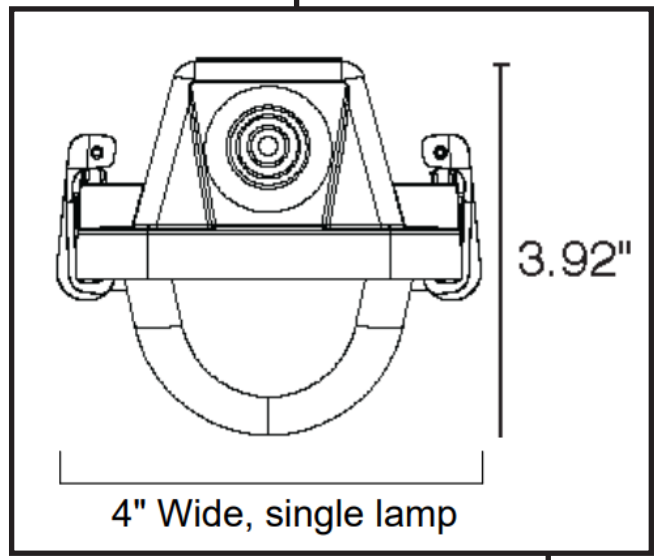
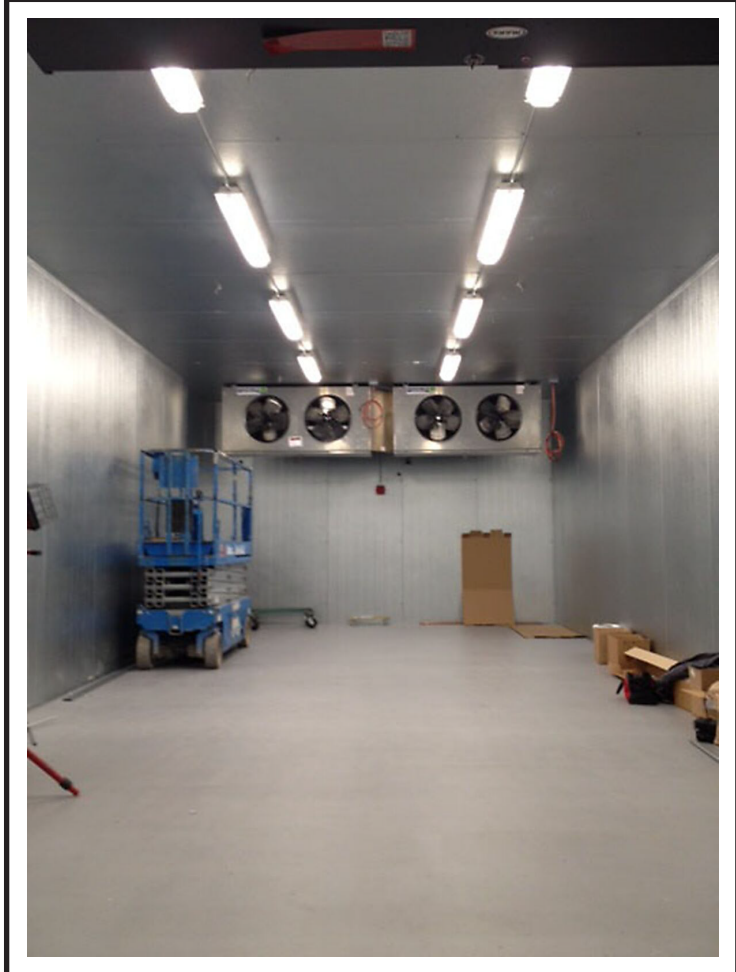


**AIREY-THOMPSON**<sup>TM</sup>  
*Manufacturing Quality Luminaires*

**81L SERIES LED  
 LINEAR WEATHER-  
 PROOF**

DROP ROD / SURFACE MOUNT

**MADE IN USA**



| FIXTURES PERFORMANCE |                 |        |        |
|----------------------|-----------------|--------|--------|
| OAL LENGTH           | FIXTURE WATTAGE | LUMENS | OUTPUT |
| 48"                  | 36              | 4171   | NORMAL |
| 48"                  | 51.16           | 5958   | HIGH   |



**AIREY-THOMPSON™**  
*Manufacturing Quality Luminaires*

# 81L SERIES LED LINEAR WEATHER- PROOF

DROP ROD / SURFACE MOUNT

**MADE IN USA**

## Lenses

- Lineal Ribbed Frosted Polycarbonate (low profile):
  - Best for obscuring the image of fluorescent or LED lamps
  - 100% impact modified
  - Best in areas with uv exposure or where chemicals are present
- Smooth frosted acrylic (low profile):
  - Best shallow lens for LED boards and overall light distribution
  - UV stableized
  - Best in extreme temperature and highabuse environments

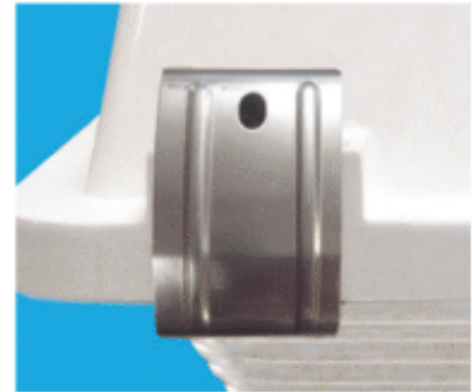


## Latches

CAPTIVE, affixed to the housing therefore will not fall off  
 TAMPER proof, when using screws

Available in

White POM  
 Marine Grade 316-Stainless Steel



## Installation:

Fixture can be mounted in various ways direct to the ceiling, junction box, pendant  
 (single or dual point), by cable or chain



*Instagram*



FOLLOW US ON INSTAGRAM @ AIREY\_THOMPSON\_LIGHTING