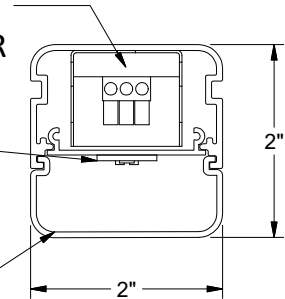


UNIVERSAL VOLTAGE (120/277v)  
FCC PART 15 COMPLIANT LED DRIVER

HIGH EFFICIENCY  
LED BOARD

HIGH IMPACT FROSTED  
POLYCARBONATE LENS



The 51L series is a high performance, energy efficient lighting system designed to excel in Central Office and Data Center aisle applications. Three standard light levels to choose from: normal, high and ultra high. Normal light output luminaires are intended for mounting heights less than 9'. High light output luminaires are intended for mounting heights 9' to 11'-6". Ultra high output is intended for mounting heights above 11'.

#### SPECIFICATIONS

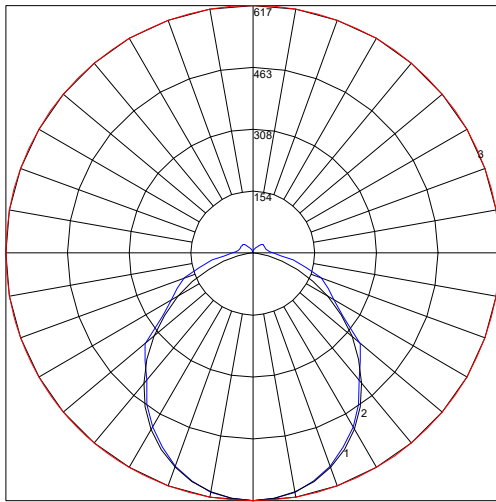
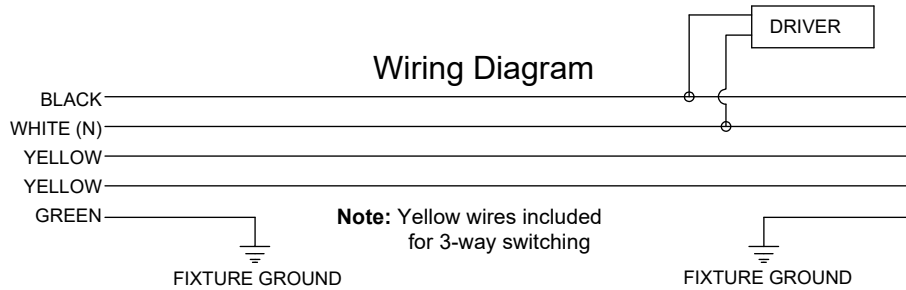
The LED luminaire shall be Airey-Thompson Co. 51L series having a cross section of 2" x 2". The housing shall be extruded aluminum with a .060" wall thickness and aluminum end caps. The diffuser shall be manufactured from impact resistant frosted polycarbonate. The LED driver must be a universal voltage (120/277v), FCC Title 47 CFR Part 15 Class A or B compliant to prevent RF Interference that can affect sensitive data center equipment. The Luminaire must be ETL listed, have a 5 year warranty and be made in the USA.

#### FEATURES AND BENEFITS

- Sleek profile presents minimum restriction to HVAC air flow into the aisle.
- Very shallow design allows mounting in aisles where head room is a concern.
- Extruded satin anodized aluminum housing.
- Extremely efficient 40K LED's producing more light than fluorescent with significant energy savings.
- High performance universal voltage (120/277) FCC Title 47 CFR Part 15 class A or B approved LED driver.
- Rugged high impact frosted polycarbonate diffuser provides LED protection and a higher flame rating than acrylic.
- Luminaires may be mounted individually or in continuous rows.
- Snap-in covers on each end of the luminaire provides easy access to the coupling and wiring connections necessary for continuous row mounting, with minimal disassembly.
- End caps / assemblies ordered separately to match row requirements.
- 14 ga through wires consist of a power circuit plus 2 yellow wires for 3 way switching.
- ETL listed, 5 year warranty, made in the USA

How to build a part number	Product Series	Light Output	Length in Inches	Options
Part number format	51L	N	48	Q
Choices	51L	N= Normal H= High U= Ultra** High	24 48 96	Q= Strut hangers included* EM= Emergency battery backup

\* Q often specified for CenturyLink applications with strut overhead framing  
\*\* Ultra high is not available in 24" fixtures



Polar graph for 51LN48

NORMAL LEVEL FIXTURES*		
OAL LENGTH	WATTAGE	LUMENS
24"	7.7	889
48"	15.9	1873
96"	31.8	3746

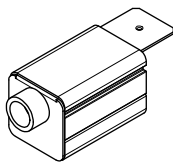
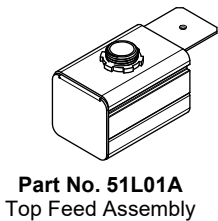
HIGH LEVEL FIXTURE*		
LENGTH	WATTAGE	LUMENS
24"	10.8	1245
48"	22.25	2623
96"	44.52	5245

ULTRA HIGH LEVEL FIXTURES*		
LENGTH	WATTAGE	LUMENS
48"	28.5	3277
96"	56.9	6544

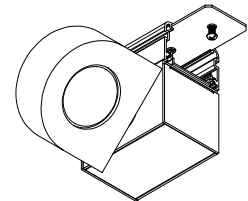
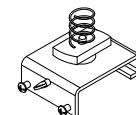
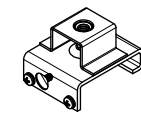
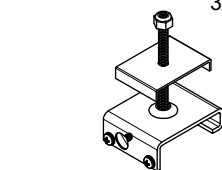
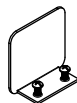
\*Lumen values approximate. High level fixtures should be specified for installs 9' high and above, or for wide aisles, or when black or dark cabinets are used. Ultra high is ideal for general real estate lighting above 11'.

**Related Components**

**NOTE:** 1 feed end and 1 blank end are typically required per row. 2 hanger brackets required per fixture.



**Note:** 51L01Q includes a strut hanger



**Note:** 5111S1Q Includes a strut hanger