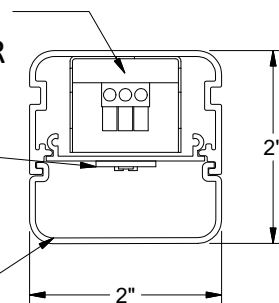


UNIVERSAL VOLTAGE (120/277v)
FCC PART 15 COMPLIANT LED DRIVER

HIGH EFFICIENCY
LED BOARD

HIGH IMPACT FROSTED
POLYCARBONATE LENS



The 51L series is a high performance, energy efficient lighting system designed to excel in Central Office and Data Center aisle applications. Three standard light levels to choose from: normal, high and ultra high. Normal light output luminaires are intended for mounting heights less than 9'. High light output luminaires are intended for mounting heights 9' to 11'-6". Ultra high output is intended for mounting heights above 11'-6".

SPECIFICATIONS

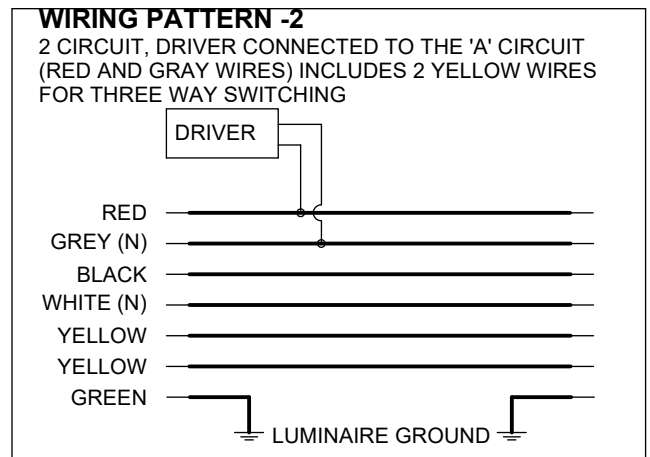
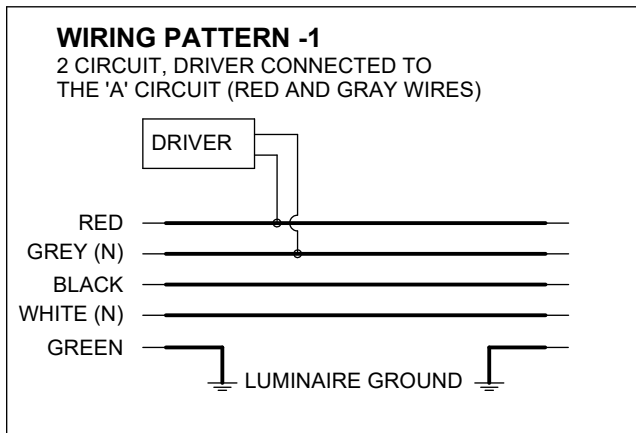
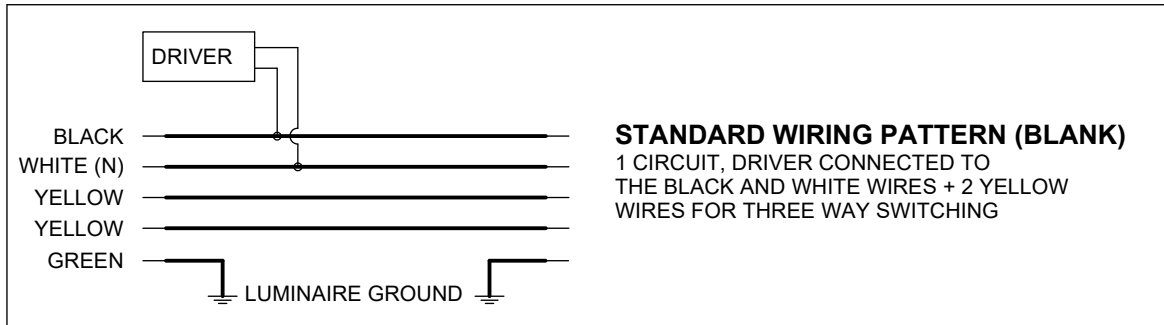
Airey-Thompson 51L series, cross section of 2" x 2", extruded aluminum housing with a .060" wall thickness and aluminum end caps, impact resistant frosted polycarbonate diffuser, universal voltage (120/277v), FCC Title 47 CFR Part 15 Class A or B compliant LED driver to prevent RF Interference that can affect sensitive data center equipment. The Luminaire must be ETL listed, have a 5 year warranty and be made in the USA.

FEATURES AND BENEFITS

- Sleek profile presents minimum restriction to HVAC air flow into the aisle.
- Very shallow design allows mounting in aisles where head room is a concern.
- Extruded satin anodized aluminum housing.
- Extremely efficient 40K LED's producing more light then fluorescent with significant energy savings.
- High performance universal voltage (120/277) FCC Title 47 CFR Part 15 class A or B approved LED driver.
- Rugged high impact frosted polycarbonate diffuser provides LED protection and a higher flame rating than acrylic.
- Luminaires may be mounted individually or in continuous rows.
- Snap-in covers on each end of the luminaire provides easy access to the coupling and wiring connections necessary for continuous row mounting, with minimal disassembly.
- End caps / assemblies ordered seperately to match row requirements.
- 14 ga through wires for continuous row mounting.
- Multiple wiring patterns available to accomodate a variety of field requirements and to simplify installation. See the part number specific wiring diagrams.
- A variety of hanger brackets available to match overhead framing conditions.
- 2', 4' and 8' lenghts are standard.
- ETL listed, 5 year warranty, made in the USA

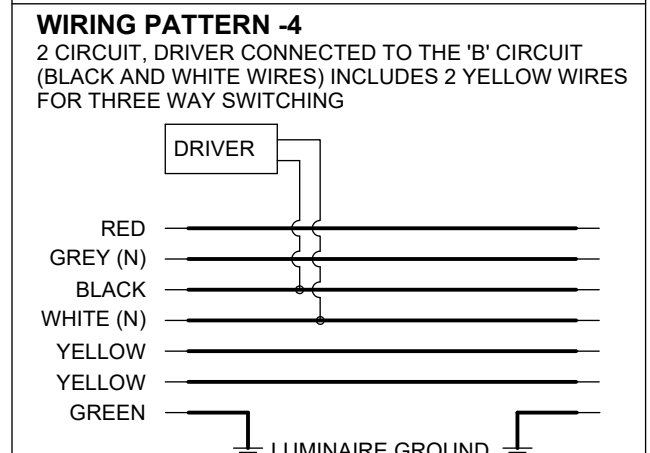
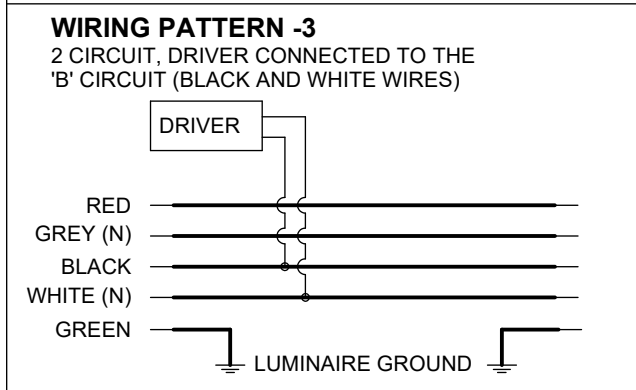


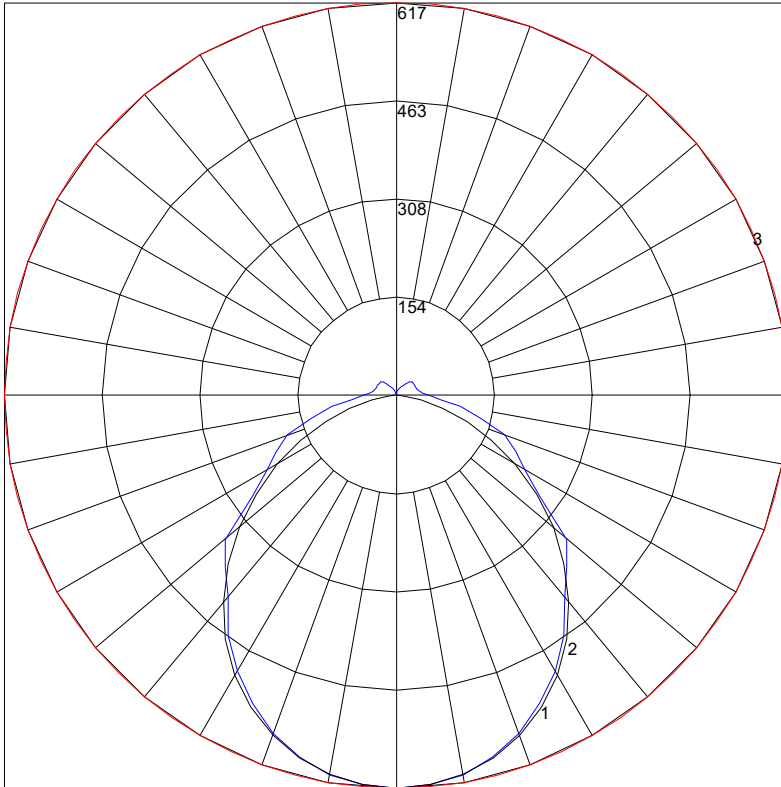
How to build a part number	Product Series	Light Output	Length in Inches	Wiring Options	Secondary Option
Part number format	51L	N	48	-3	
Choices	51L	N= Normal H= High U= Ultra* High	24 48 96	blank (standard) -1 -2 -3 -4	-EM= Battery Backup



↕ **SUITABLE PAIR** ↕

↕ **SUITABLE PAIR** ↕





Polar graph for 51LN48

NORMAL LEVEL FIXTURES*		
OAL LENGTH	WATTAGE	LUMENS
24"	7.7	889
48"	15.9	1873
96"	31.8	3746

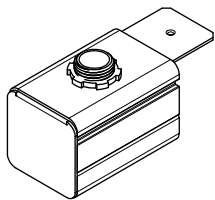
HIGH LEVEL FIXTURE*		
LENGTH	WATTAGE	LUMENS
24"	10.8	1245
48"	22.25	2623
96"	44.52	5245

ULTRA HIGH LEVEL FIXTURES*		
LENGTH	WATTAGE	LUMENS
48"	28.5	3277
96"	56.9	6544

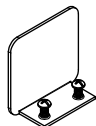
*Lumen values approximate. High level fixtures should be specified for installs 9' high and above, or for wide aisles, or when black or dark cabinets are used. Ultra high is ideal for general real estate lighting above 11'.

Related Components

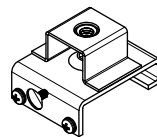
NOTE: 1 feed end and 1 blank end are typically required per row. 2 hanger brackets required per fixture.



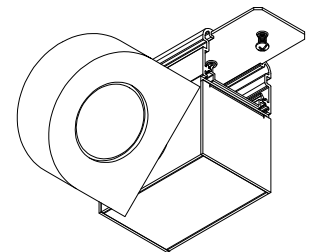
Part No. 51L01A
Top Feed Assembly



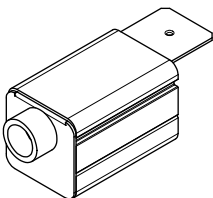
Part No. 5110B
Blank End



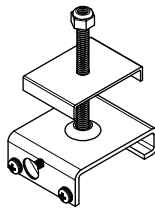
Part No. 5102-3/8D
3/8" Drop Rod hanger
Non Insulated



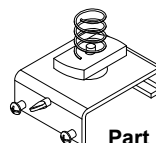
Part No. 5111S1
Occupancy Sensor
Note: 5111S1Q Includes a strut hanger



Part No. 51L01
End Feed Assembly



Part No. 5102-3
Hanger, Bracket With Top Cap
Non Insulated



Part No. 5102U
Strut hanger
Non Insulated