



52L LINEAR

SPECIFICATION SHEET

OVERVIEW

Architectural luminaires proudly built in America since 1935. The 52L series is a linear luminaire available in lengths from 1'-8' in single fixture or joinable for continuous row runs with our rapid quick connect that cuts install time by 80%. Three standard lumen packages available with custom capabilities as well up to 1800 lumens per foot. Standard finish is satin anodized with powdercoat white or black options available upon request.

KEY FEATURES

- **BABAA Compliant**
Hand crafted in California
- **L70>72,000 hours**
High quality electrical components
- **80+ CRI Standard**
High definition color rendering
- **<3SDMC consistency**
Uniform color consistency
- **124+ Lumens per watt**
Efficient performance delivered



DETAILS

01 Housing

Extruded aluminum body powder coated or anodized finish. Extruded high diffusion acrylic lens. Aluminum end caps with no visible fasteners.

02 Electrical

Integral 120/277V driver standard. If 0-10V dimming is specified 100-1% is standard. Integral battery backups are also available.

03 LED Array

High quality Samsung chips, delivering 124+ lumens per watt on the system level, mounted on an aluminum heatsink for thermal management.

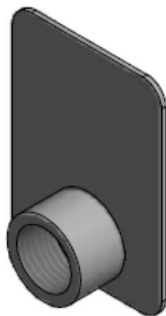
04 Mounting options

Surface(ceiling or wall) mount / strut hanger / tate or gordon grid / 3/8 and 5/8 all thread hangers. Single tool Installation.

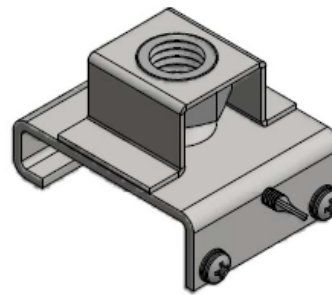
BUILD A PART NUMBER

• SERIES	• LIGHT OUTPUT	• CCT	• LENGTH IN INCHES	• WIRING PATTERN	• OPTIONS
• 52L					
• 51L	<ul style="list-style-type: none"> • N NORMAL • H HIGH • V VERY HIGH 	<ul style="list-style-type: none"> • 30K • 35K • 40K • 50K 	<ul style="list-style-type: none"> • 24 • 36 • 48 • 60 • 72 • 84 • 96 	<ul style="list-style-type: none"> • -0 • -1 • -3 • -10** • -11** • -12** 	<ul style="list-style-type: none"> • D11: 1% 0-10V DIMMING • EM : 10W INTEGRAL BATTERY • OCC: PIR OCCUPANCY SENSOR • NXSP: HUBBELL PIR OCCUPANCY/ DAYLIGHT SENSOR

- RELATED COMPONENTS ORDERED SEPERATELY
- NOTE: TYPICALLY 2 HANGER RECOMMENDED PER FIXTURE / 1 BLANK AND 1 FEED PER ROW



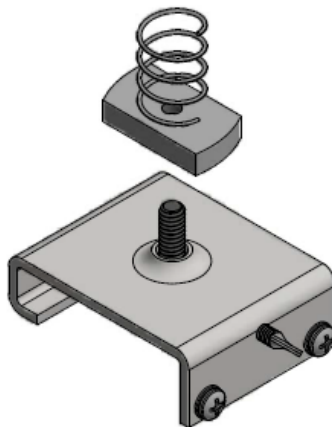
P/N: 52L01
Feed end cap w/
1/2" threaded hub



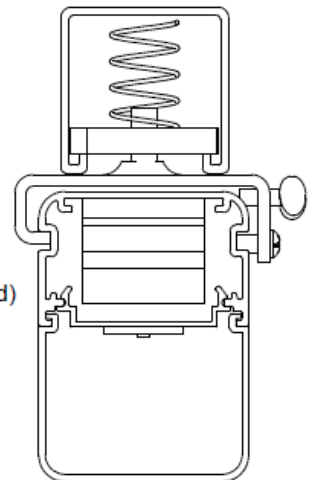
P/N: 5202-3/8D or 5202-5/8D
hanger bracket for 3/8 or 5/8
all-thread drop rod



P/N: 5210B
Blank end cap



P/N: 5202U
Strut hanger
(Left: whats included)
(Right: how it looks installed)



CONTACT US!

www.airey-thompson.com

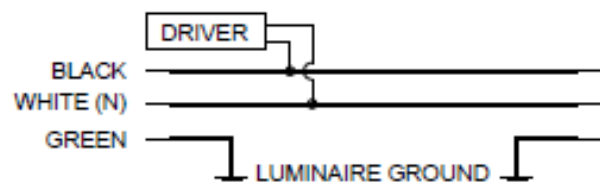
Phone: 800.421.6196

E-mail: contactus@aireythompson.com



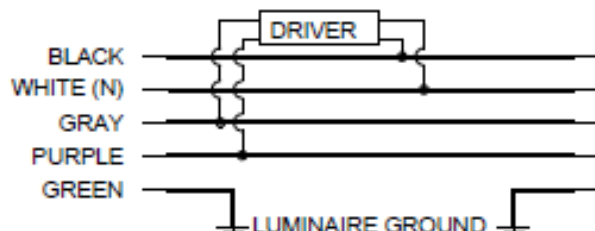
WIRING PATTERN -0

1 CIRCUIT, DRIVER CONNECTED TO THE BLACK AND WHITE WIRES



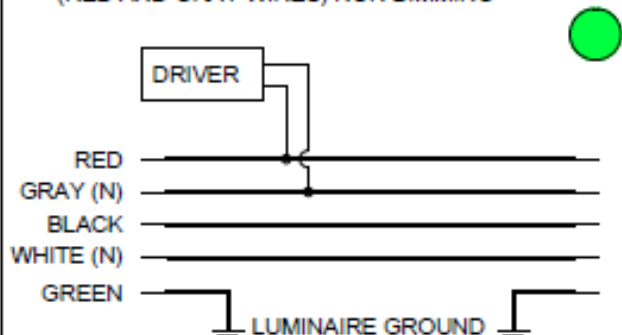
WIRING PATTERN -10

1 CIRCUIT, DRIVER CONNECTED TO THE BLACK AND WHITE WIRES + GRAY PURPLE WIRES FOR 0-10V DIMMING.



WIRING PATTERN -1

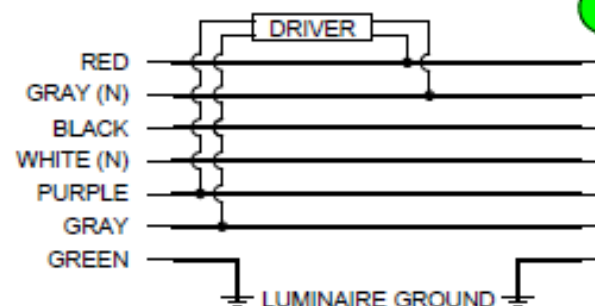
2 CIRCUIT, DRIVER CONNECTED TO THE 'A' CIRCUIT (RED AND GRAY WIRES) NON DIMMING



← SUITABLE PAIR →

WIRING PATTERN -11

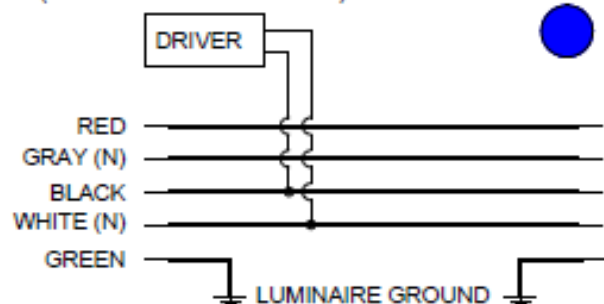
2 CIRCUIT, DRIVER CONNECTED TO THE 'A' CIRCUIT (RED AND GRAY WIRES) INCLUDES GRAY AND PURPLE WIRES FOR 0-10V DIMMING.



← SUITABLE PAIR →

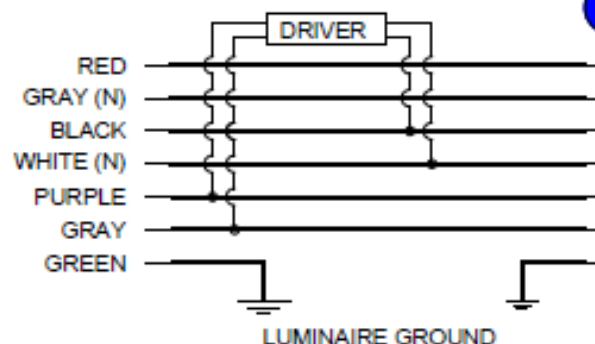
WIRING PATTERN -3

2 CIRCUIT, DRIVER CONNECTED TO THE 'B' CIRCUIT (BLACK AND WHITE WIRES) NON DIMMING



WIRING PATTERN -12

2 CIRCUIT, DRIVER CONNECTED TO THE 'B' CIRCUIT (BLACK AND WHITE WIRES) INCLUDES GRAY AND PURPLE WIRES FOR 0-10V DIMMING.



Example layout of dual circuit continuous row aisle

Circuit A

Circuit B

Circuit A

Circuit B

P/N: 52LN40K96-(3 or 12)

P/N: 52LN40K96-(1 or 11)

P/N: 52LN40K96-(3 or 12)

P/N: 52LN40K96-(1 or 11)