



Rapid Install For Continuous Row Applications



Single Tool Installation



Through wiring with quick connect options

FEATURES

Hanger brackets allow easy mounting to overhead framing anywhere along the luminaire (= **labor savings**)

Everything is included to make seamless joints for continuous row mounting (= **labor savings**)

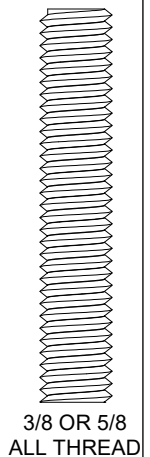
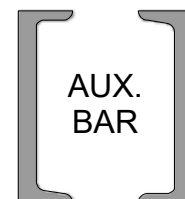
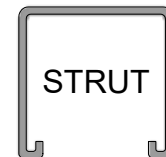
Sleek 2" by 2" profile reduces disruptions to cooling air flow

Hubbell Distributed Intelligence™ and other control options

Integral occupancy sensor option

Hot aisle compatible up to 120° F

EASILY MOUNT TO A VARIETY OF OVERHEAD FRAMING





ORDERING GUIDE

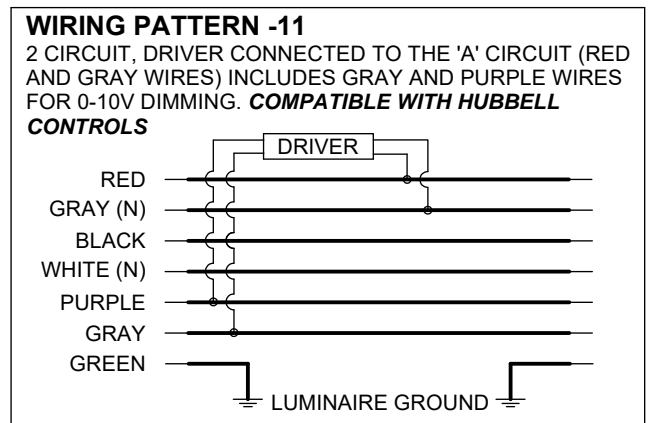
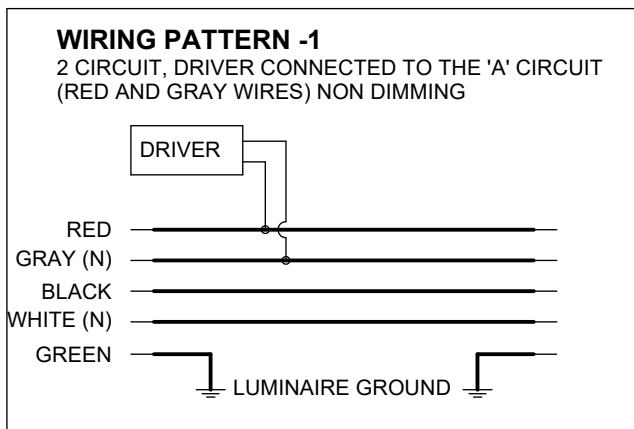
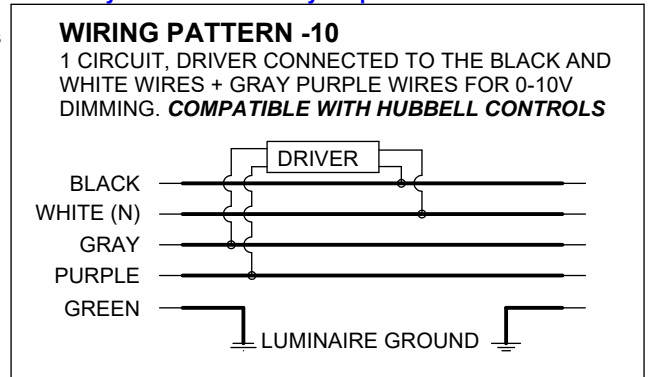
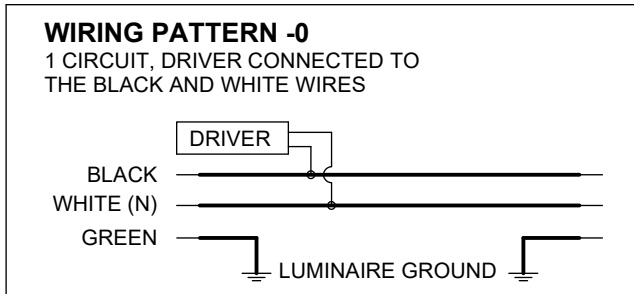
How to build a part number	Product Series	Light Output	Length in Inches	Wiring Pattern	Wire Connectors	Hubbell Controls Solutions NX Distributed Intelligence™ Control Options
-----------------------------------	----------------	--------------	------------------	----------------	-----------------	---

Part number format	51L	N	96	-10	-QC	-NXS
---------------------------	------------	----------	-----------	------------	------------	-------------

Choices	51L	N= Normal approximately 500 lumens per foot H= High approximately 610 lumens per foot *U= Ultra High, approximately 819 lumens per foot *For custom output, specify lumen target up to <u>1150</u> lumens per foot.	24 48 96	-0 -1 -3 -10** -11** -12**	-QC= Quick Connect for continuous row mount applications -WN= Wire Nuts for individual or continuous row mount applications	Standalone or Control fixture -NXSPL: PIR Occupancy/ Daylight sensor Wireless Networked fixture -NXWE: Radio module, no sensor -NXSPWL: PIR sensor and radio module NX DISTRIBUTED INTELLIGENCE™
	<p>Consult factory for other control options and brands, we will work with you to accommodate your preferred brands</p>					

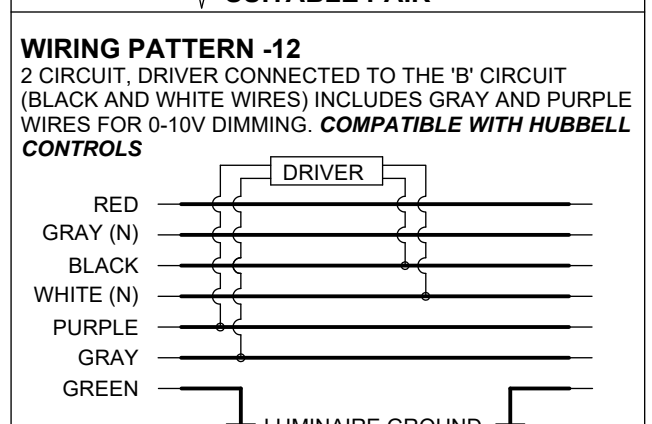
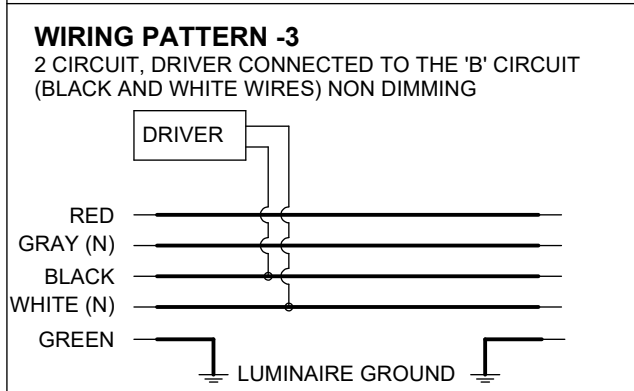
***Note:** Hot aisle only compatible with normal and high output.

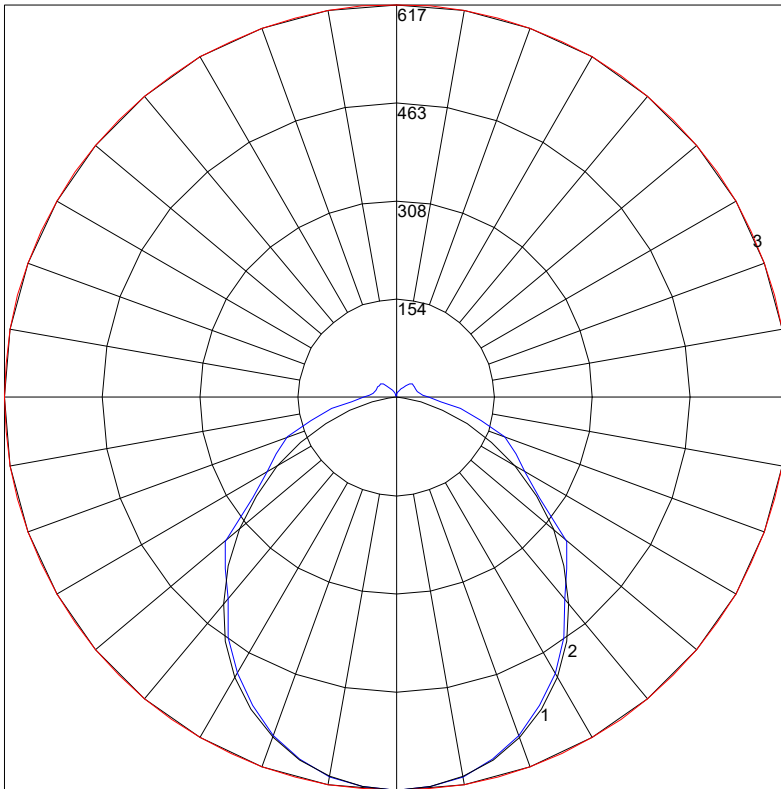
****Note:** Controls only compatible with wiring patterns: -10, -11 and -12. All luminaires down stream controlled by control fixture must have the same wiring pattern.



SUITABLE PAIR

SUITABLE PAIR





Polar graph for 51LN48

NORMAL LEVEL FIXTURES*		
OAL LENGTH	WATTAGE	LUMENS
24"	7.7	889
48"	15.9	1873
96"	31.8	3746

HIGH LEVEL FIXTURE*		
LENGTH	WATTAGE	LUMENS
24"	10.8	1245
48"	22.25	2623
96"	44.52	5245

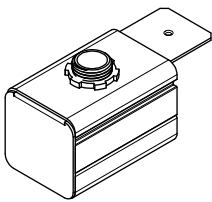
ULTRA HIGH LEVEL FIXTURES*		
LENGTH	WATTAGE	LUMENS
48"	28.5	3277
96"	56.9	6544

NOTE: Custom lumen outputs available up to 1150 Lumens per foot

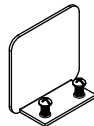
*Lumen values approximate. High level fixtures should be specified for installs 9' high and above, or for wide aisles, or when black or dark cabinets are used. Ultra high is ideal for general real estate lighting above 11'.

Related Components

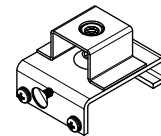
NOTE: 1 feed end and 1 blank end are typically required per row. 2 hanger brackets required per fixture.



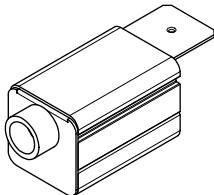
Part No. 51L01A
Top Feed Assembly



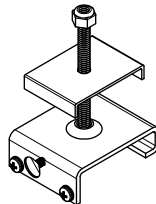
Part No. 5110B
Blank End



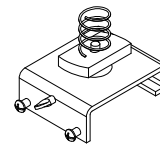
Part No. 5102-3/8D or 5102-5/8D
3/8" or 5/8" Drop Rod hanger
Non Insulated



Part No. 51L01
End Feed Assembly



Part No. 5102-3
Aux Bar Hanger
Non Insulated



Part No. 5102U
Strut hanger
Non Insulated