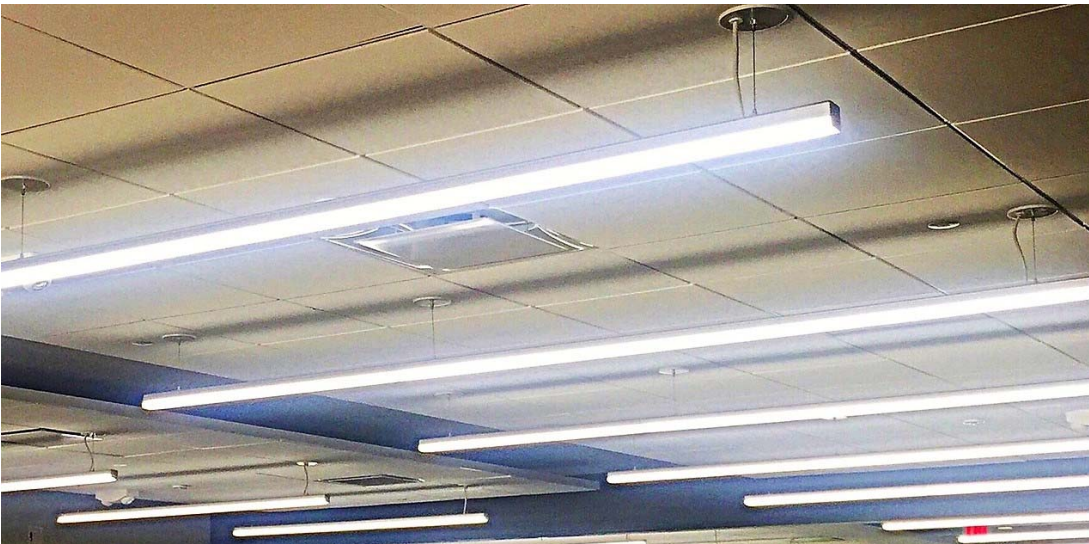


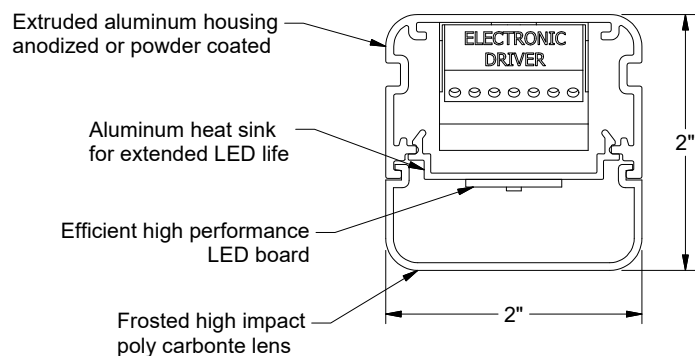
61L SERIES LED SPECIFICATION GRADE

CABLE SUSPENDED / SURFACE MOUNT
SMALL CROSS SECTION LUMINAIRES / MADE IN USA



FEATURES

Architectural linear luminaire for continuous row or individual mounting
Color consistency < 3 Step MacAdams
80+ CRI Standard, 90+ CRI optional
L70 > 72,000 hours
Multiple lumen output options to choose from
ETL Listed dry & damp locations
Proudly Made in USA



SPECIFICATIONS

LED ARRAY

High density LED arrays are used to maximize visual appeal. Only premium quality Samsung LED chips are used and are available in 2700K, 3000K, 3500K and 4000K with a tested CRI of 85, 90+ is available. Arrays are mounted to an aluminum cover for superior thermal management to extend LED life. Color consistency < 3SDCM

ELECTRICAL

Integral 120/277V, 10% 0-10V dimmable drivers are standard. 1% 0-10V dimming driver optional.

CONSTRUCTION

Extruded aluminum housing and LED mounting with three standard finish options: Satin anodized, Powdercoat White and Black. Lens is extruded frosted, high impact poly carbonate. Aluminum end caps with no visible fasteners.

PERFORMANCE

100 Lumens per watt for 4000K. Three standard light output options: Normal 5 watts and 500 lumens per foot, High 7 watts and 700 lumens per foot, Very high 10 watts and 1000 lumens per foot. Custom lumen programming available.

WARRANTY

Luminaire warranted for 5 years from the date of manufacturing.






61L SERIES LED SPECIFICATION GRADE

CABLE SUSPENDED / SURFACE MOUNT SMALL CROSS SECTION LUMINAIRES / MADE IN USA

How to build a part number	Product Series	Light Output	Color Temperature	Length in Inches	Housing Color	Dimming	Options
----------------------------	----------------	--------------	-------------------	------------------	---------------	---------	---------

Part number format	61L	N	40K	48	-0	-D11	-EM -CH6
--------------------	------------	----------	------------	-----------	-----------	-------------	-----------------

Choices	61L N= Normal H= High V= Very High Custom: specify total lumens per foot	27K 30K 35K 40K	24 36 48 60 72 84 96 <small>specify total run length</small>	-0= Satin -3= White -5= Black Custom	-D10 10% 0-10V -D11 1% 0-10V	-EM = 10W battery backup -CH3 = 3 wire power cord and 48" aircraft cable* -CH5 = 5 wire power cord and 48" aircraft cable* -CH6 = 6 wire power cord and 48" aircraft cable* -SH = Pair of strut hangers* -90CRI = 90+ CRI -OCC = Occupancy sensor  -NXSPL = Hubbell NX BT PIR occupancy/daylight low mount sensor and in-fixture module -NXWE = Hubbell NX wireless enabled with in-fixture module -NXSPWL = Hubbell NX Wireless with PIR occupancy/daylight low mount sensor (Consult factory for other sensor/controls options)
---------	--	--	--	--	---	--

*** SUSPENDED MOUNTING OPTIONS EXPLAINED:**

-CH3: What is this? This is a **feed cable set for use with phase dimming or non-dimming applications**

What's included: 2ea. low profile white canopies, 2ea. 48" x 1/16" aircraft cables, 1ea. 3 wire power feed and adjustable cable grippers.

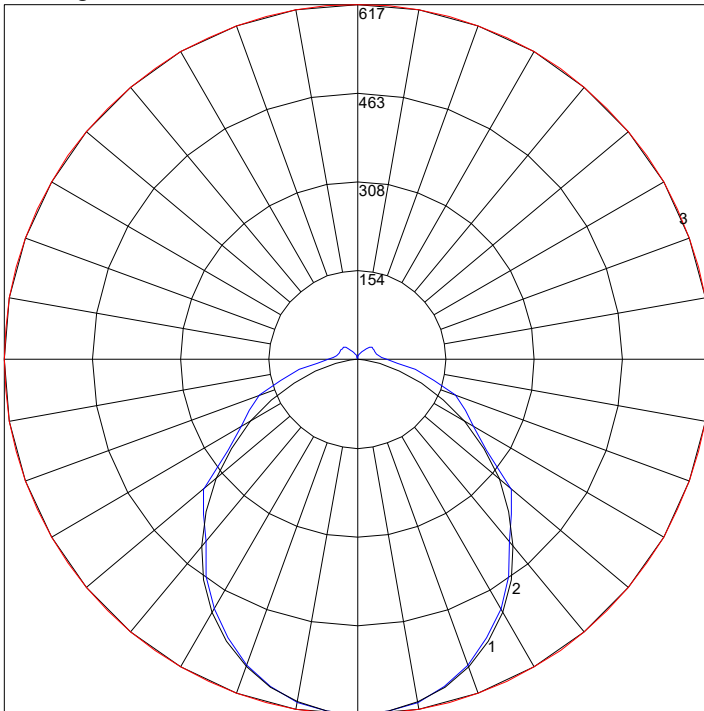
-CH5: What is this? This is a **feed cable set for use with 0-10V dimming applications**

What's included: 2ea. low profile white canopies, 2ea. 48" x 1/16" aircraft cables, 1ea. 5 wire power feed and adjustable cable grippers.

-CH6: What is this? Same as -CH5, but has an additional wire for the unswitched circuit necessary for a battery backup.

-SH: What is this? This option allows for direct mounting to strut in open ceiling environments

What's included: 2 unistrut hanger brackets and spring nuts to mount anywhere along the fixture housings hanger groove.



(Polar graph for 61LN40K48)

Consult website of factory for .ies and photometrics

NORMAL LEVEL FIXTURES**		
OAL LENGTH	FIXTURE WATTAGE	LUMENS
24"	10	1000
48"	20	2000
96"	40	4000

HIGH LEVEL FIXTURES**		
LENGTH	FIXTURE WATTAGE	LUMENS
24"	14	1400
48"	28	2800
96"	56	5600

VERY HIGH LEVEL FIXTURES**		
LENGTH	FIXTURE WATTAGE	LUMENS
24"	19.4	1940
48"	38.8	3880
96"	77.6	7760

**Values approximate, based on 4000K LEDs

** LED is a continuously improving technology, specifications subject to change without notice.