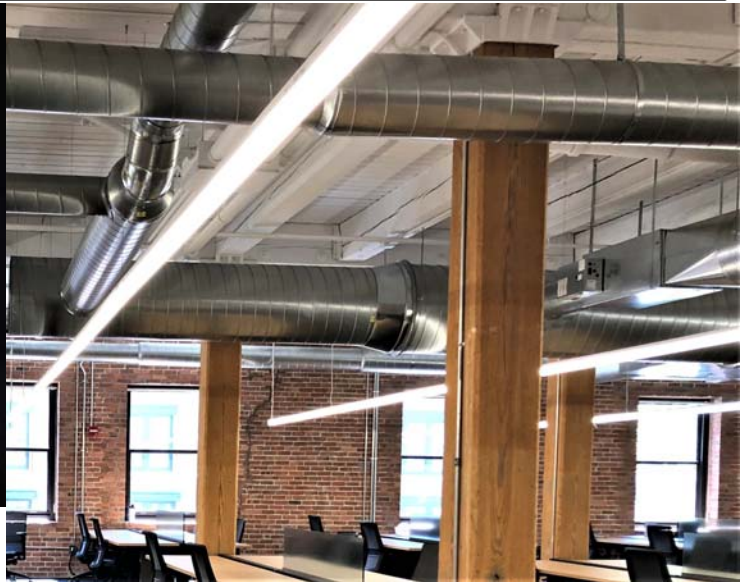


62L SERIES LED ARCHITECTURAL GRADE CABLE SUSPENDED / SURFACE MOUNT SMALL CROSS SECTION LUMINAIRES / MADE IN USA



FEATURES AND BENEFITS

- Ideal applications are: office spaces, task, aisle, overhead, stairway and hospitality.
- Up to 124 Lumens per watt at the system level, at 3000K.*
- Three light levels to choose from: Normal which is approximately 5 watts and 615 lumens per foot, High which is about 40% more light, very High (about double the light of normal) for when mounted above 10' or where more light is desired. Light output can also be factory customized to meet your lumen or wattage needs.
- 1% 0-10v dimming option available, phase dimming also available.
- An **Occupancy/Daylight sensor** can be specified to meet IECC-2012 and CA Title 24 requirements. The lens mounted sensor adds approximately 2-1/2" to the OAL of the fixture. The sensor has a variety of adjustments including time, motion and ambient light level sensitivity. Sensor is easy to access by un-snapping the lens.

CONSTRUCTION: Premium 6063-T5 extruded aluminum with .060 minimum wall thickness, aluminum end caps with no visible fasteners, extruded impact resistant, high diffusion frosted acrylic lens.

VOLTAGE: Equipped with integral 120/277v FCC approved driver standard, several dimming options available.

MOUNTING: Two mounting slots allow mounting directly to ceiling or wall, optional aircraft cable and canopies available. For continuous row mounting remove end caps where luminaires meet and use internal couplers provided to make a seamless link. **If** ordered with cable hangers 4' adjustable cables and white canopies standard. For other cable lengths or canopy finishes consult factory

LISTING: ETL Listed damp location.

WARRANTY: 5 year limited warranty, see Airey-Thompson distributor terms and conditions for more details.

How to build part number	Product Series	Light Output	Color Temperature	Length in Inches	Housing Color	Typical extra charge options Suffix part # as required in the sequence below
Part number format	62L	N	40K	48	-0	-D10-CH5
Choices	62L	N= Normal H= High V= Very High U= Ultra High C= Custom specify	30K 35K 40K	24 36 48 60 72 84 96 <small>contact factory for other lengths</small>	-0= Satin -3= White -Custom	-D10 0-10V 100-10% dimmable -DIM Phase dimmable driver -D11 1% 0-10v dimmable -F Factory wired fuse -CH3* Cable hanger pair w/ 1 power feed non dimming or triac dimming -CH5* Cable hanger pair w/ 1 power feed for 0-10v dimming -CH6* Cable hanger pair w/ 1 power feed for 0-10v dimming (use with -EM) -EM Emergency battery backup -OCC Occupancy/Daylight sensor (adds approx. 2-1/2" to OAL)

* SEE NEXT PAGE FOR MORE INFORMATION

SPECIFICATIONS

Airey-Thompson 62L series with a cross section of 2" by 2-3/4" made from extruded aluminum housing with .060 wall thickness, aluminum end caps with no visible fasteners. The diffuser shall be an impact resistant, high diffusion frosted acrylic wrap around lens. Luminaire must be equipped with a universal voltage (120/277V) electronic driver that complies with FCC Title 47 CFR Part 15 either class A or B to avoid RFI. The luminaire shall be ETL Listed for damp locations, have a 5 year warranty and be made in the USA.

SUSPENDED MOUNTING OPTIONS EXPLAINED:

-CH3: What is this? This is a **feed cable set for use with phase dimming or non-dimming applications**

What's included: 2ea. low profile white canopies, 2ea. 48" x 1/16" aircraft cables, 1ea. 3 wire power feed and adjustable cable grippers.

-CH5: What is this? This is a **feed cable set for use with 0-10V dimming applications**

What's included: 2ea. low profile white canopies, 2ea. 48" x 1/16" aircraft cables, 1ea. 5 wire power feed and adjustable cable grippers.

-CH6: What is this? Same as -CH5, but has an additional wire for the unswitched circuit necessary for a battery backup.

NOTE: Submitting your lighting layout to the factory could help determine what mounting methods would be optimal and minimize cord and cable requirements improving the overall appearance.

NORMAL LEVEL FIXTURES*		
OAL LENGTH	FIXTURE WATTAGE	LUMENS
24"	10	1233
48"	20	2466
96"	40	4932

* Consult factory for .ies and photometrics

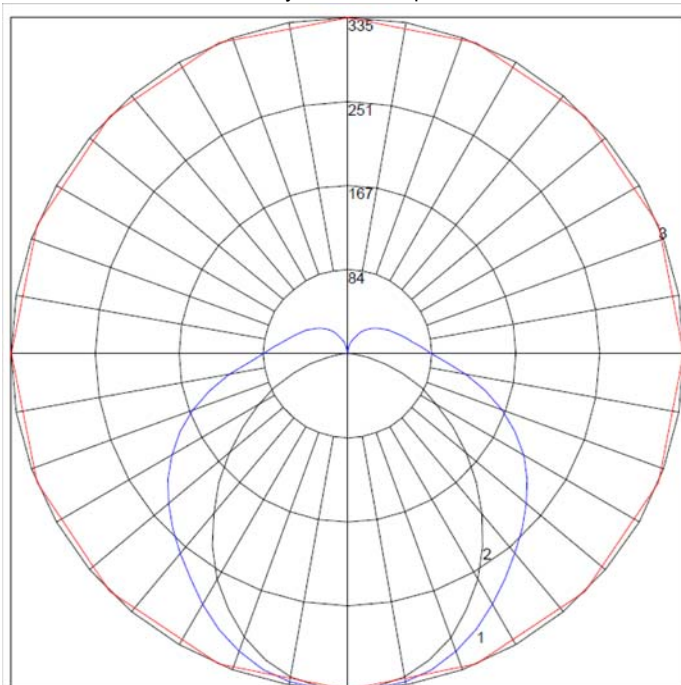
HIGH LEVEL FIXTURES*		
LENGTH	FIXTURE WATTAGE	LUMENS
24"	14	1733
48"	28	3466
96"	56	6932

*Values approximate, based on 3000K LEDs

VERY HIGH LEVEL FIXTURES*		
LENGTH	FIXTURE WATTAGE	LUMENS
24"	19.4	2314
48"	38.8	4628
96"	77.6	9256

*Values approximate, based on 3000K LEDs

* LED is a continuously improving technology, specifications subject to change without notice.



Maximum Candela = 334.88 Located At Horizontal Angle = 0, Vertical Angle = 0
 # 1 - Vertical Plane Through Horizontal Angles (0 - 180) (Through Max. Cd.)
 # 2 - Vertical Plane Through Horizontal Angles (90 - 270)
 # 3 - Horizontal Cone Through Vertical Angle (0) (Through Max. Cd.)

(Polar graph for 62LN30K24)

