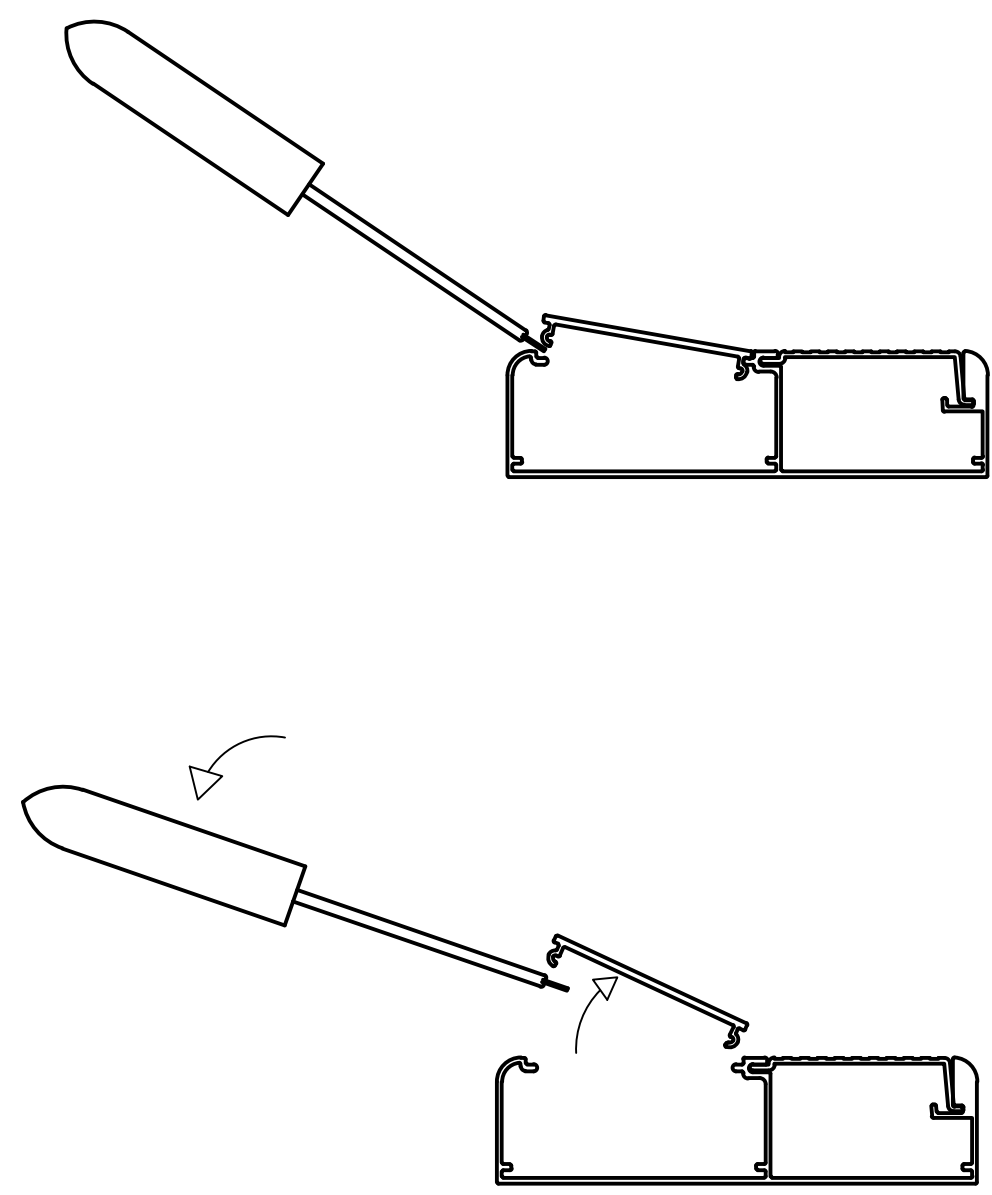


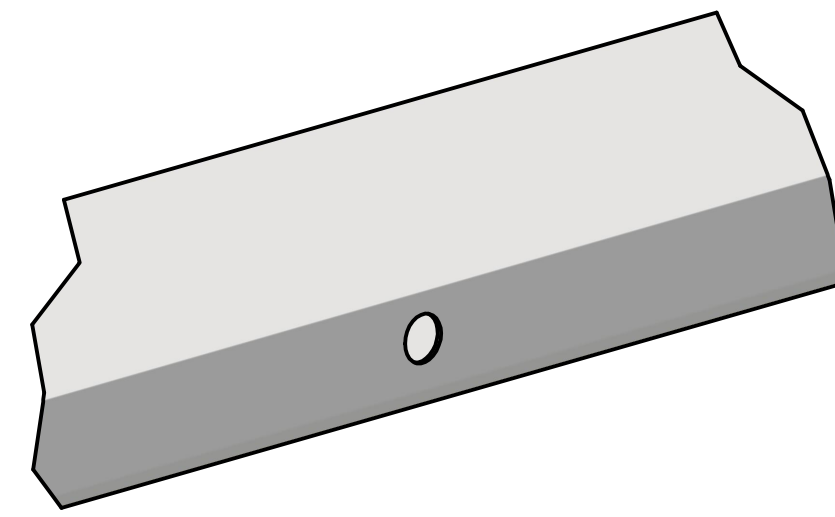
1



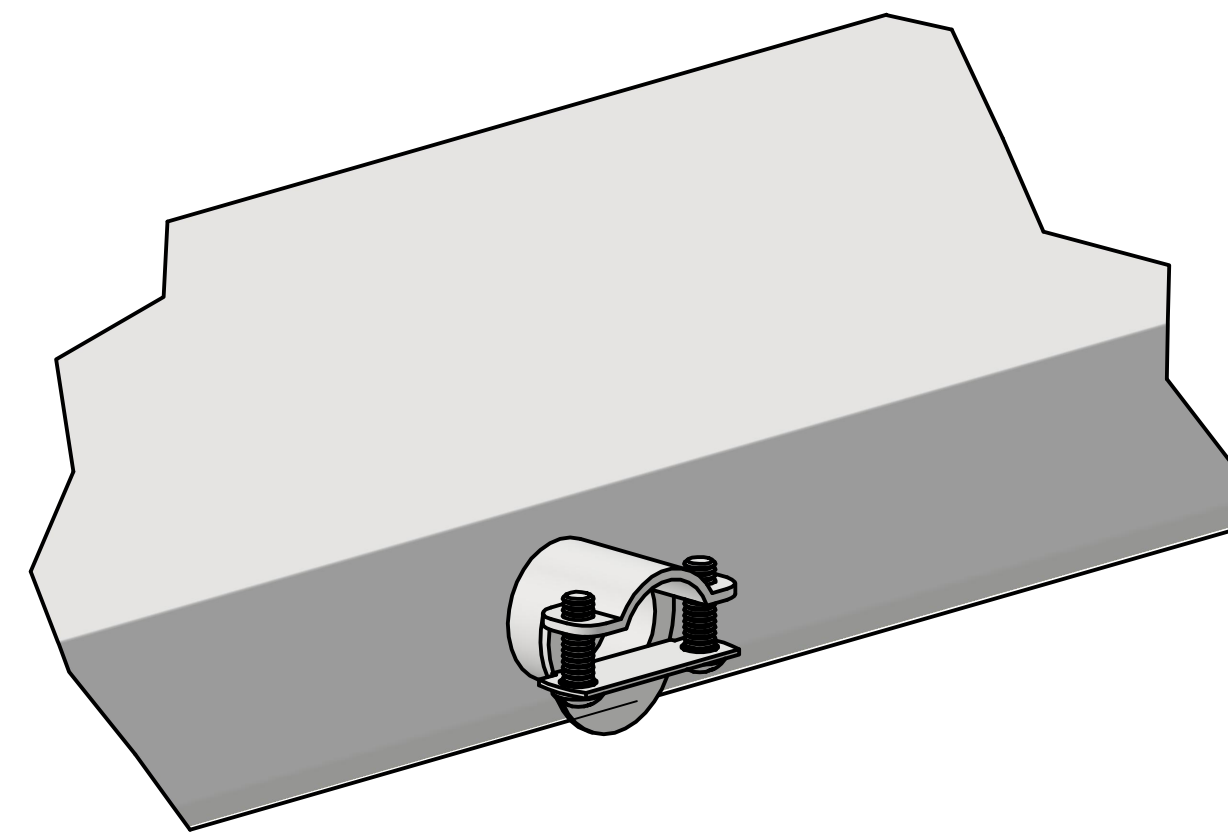
Remove ballast cover with flat blade screwdriver or putty knife

2

(IF WIRING THROUGH THE END CAP SKIP THIS STEP)

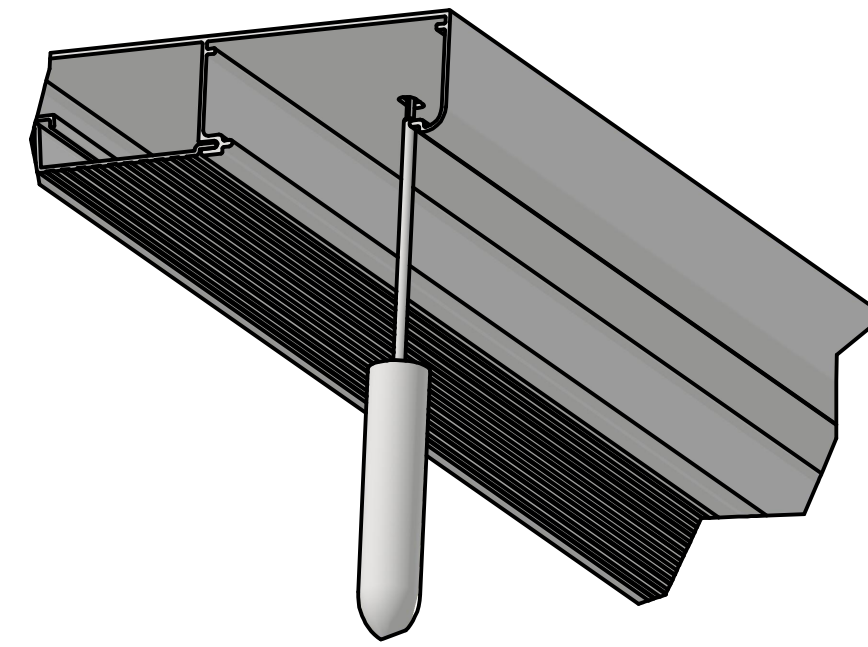


Drill a 17/32 size hole in the back of the base of the fixture (BE CAREFUL NOT TO DRILL INTO THE DRIVER)



Attach the flex fit wiring connector and tighten down

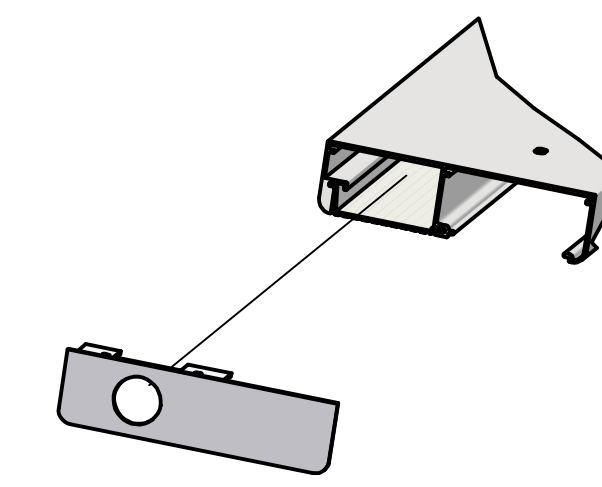
3



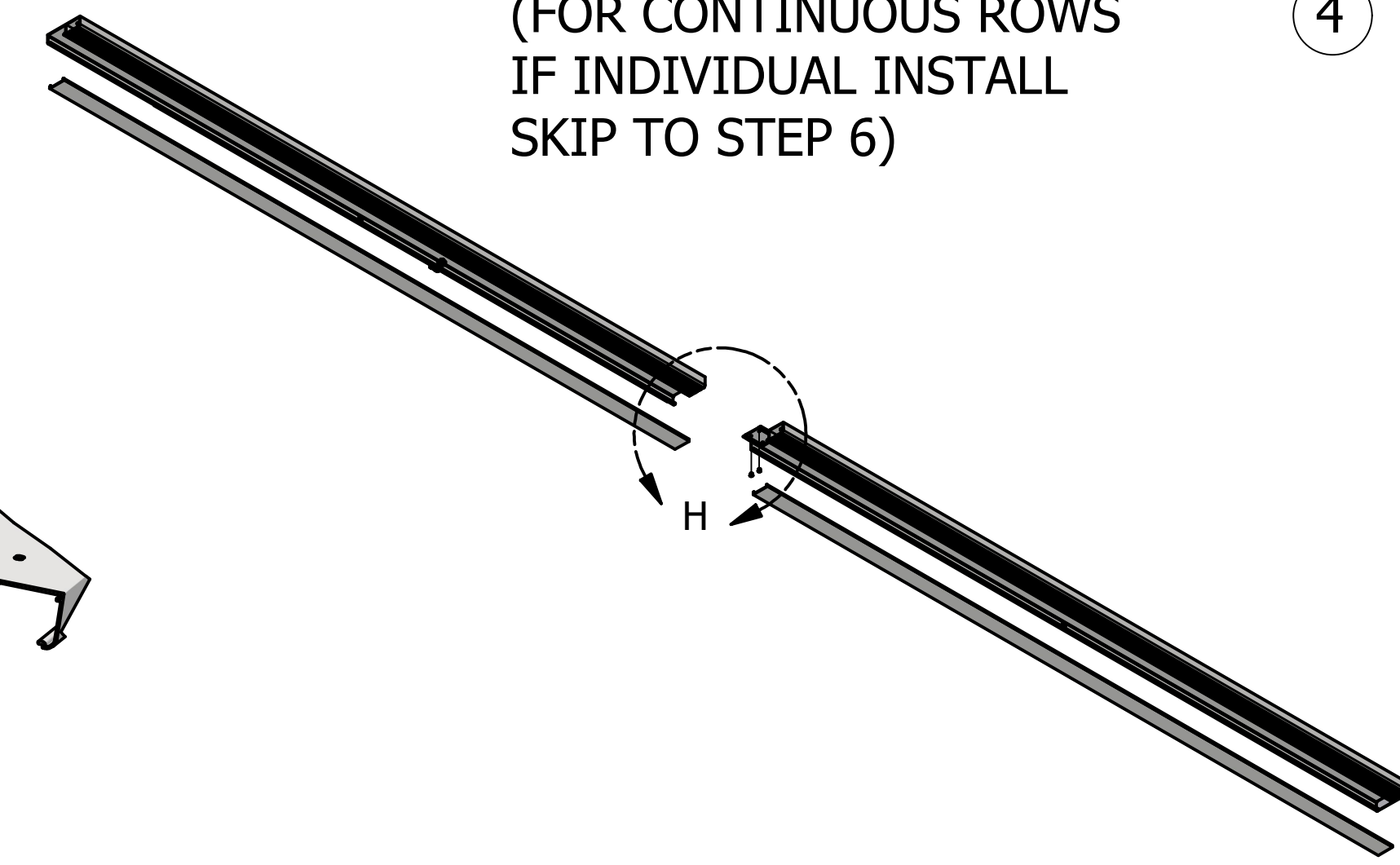
To mount fixture under a cabinet screw fasteners through mounting holes located on the inside of the fixture in the driver compartment

4

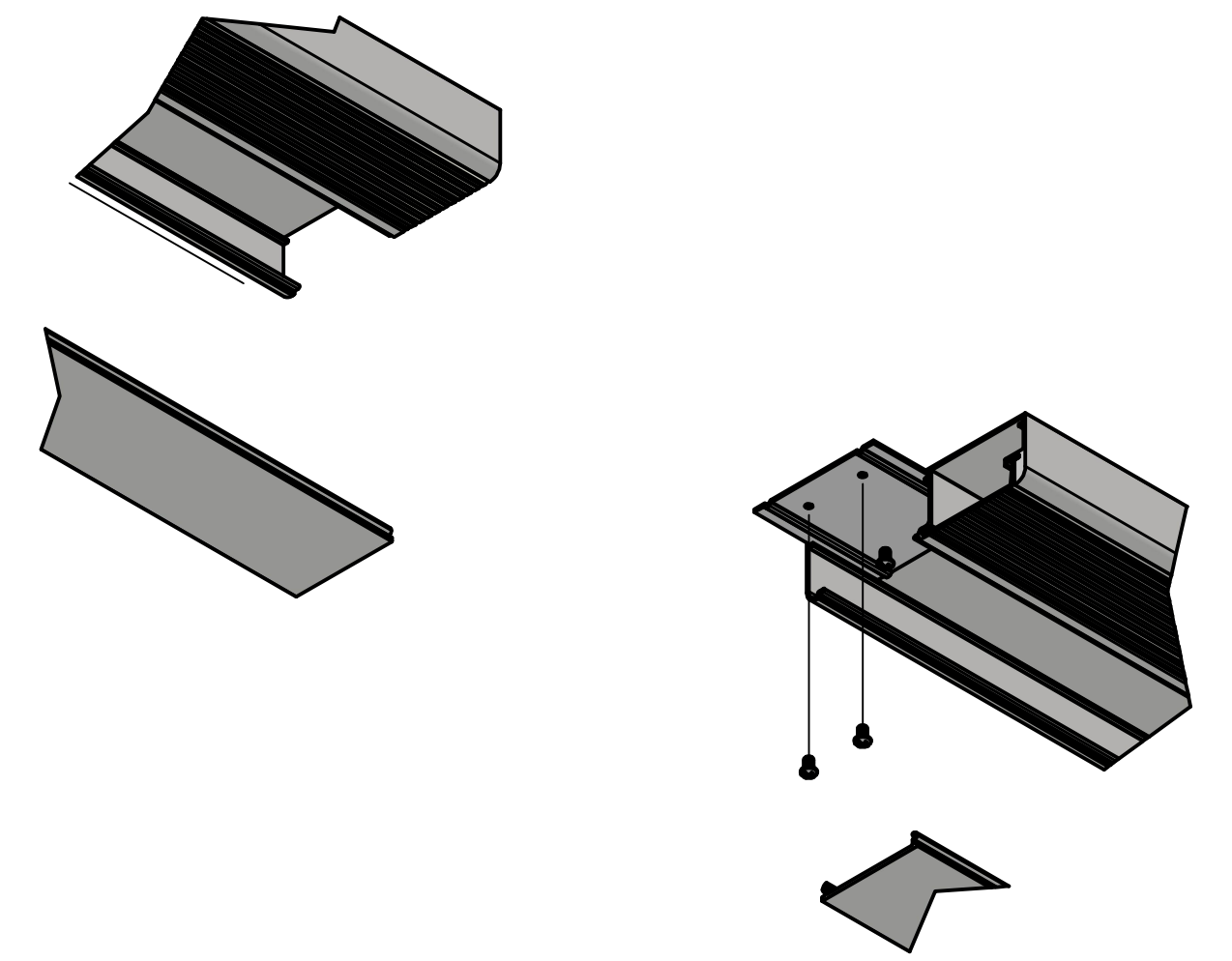
(FOR CONTINUOUS ROWS IF INDIVIDUAL INSTALL SKIP TO STEP 6)



remove end caps where fixtures meet

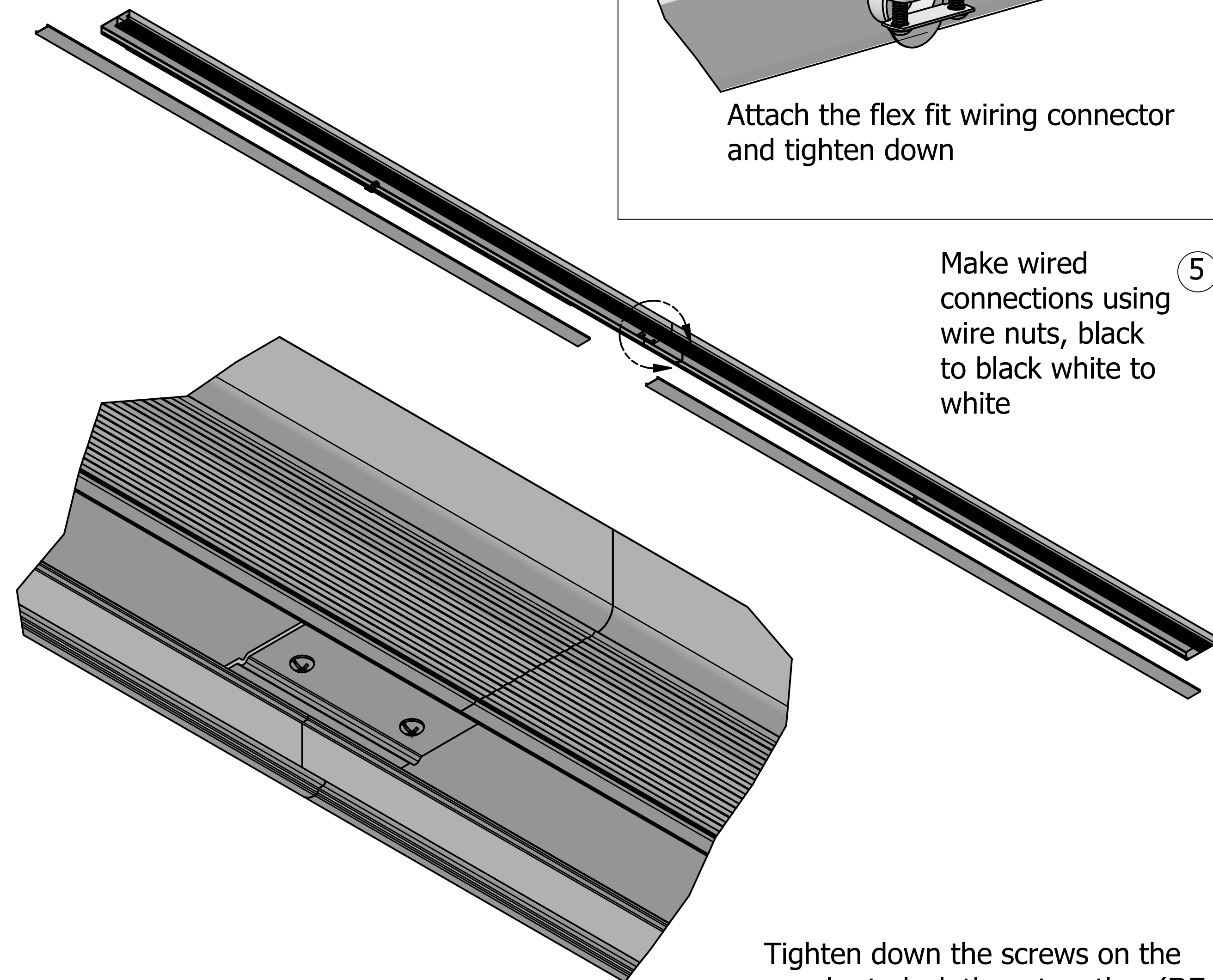


Slide the coupler onto the fixture that is currently mounted to the underside of the cabinet above then slide the next fixture onto the coupler and mount that fixture to under cabinet through the mounting holes like in step 2



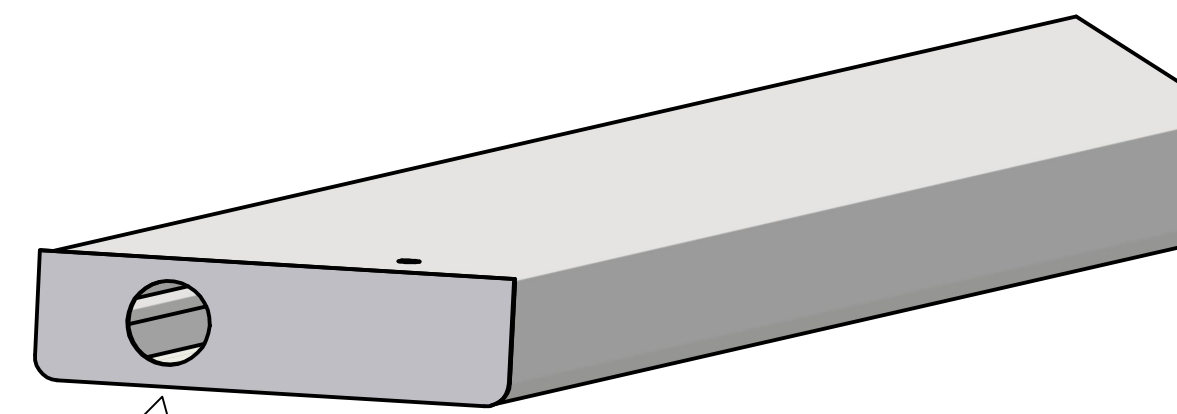
5

Make wired connections using wire nuts, black to black white to white

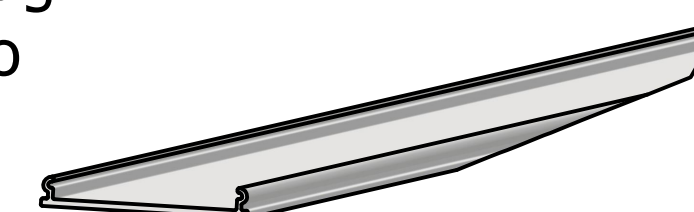


Tighten down the screws on the coupler to lock them together (**BE SURE NOT TO OVER TIGHTEN THEM**)

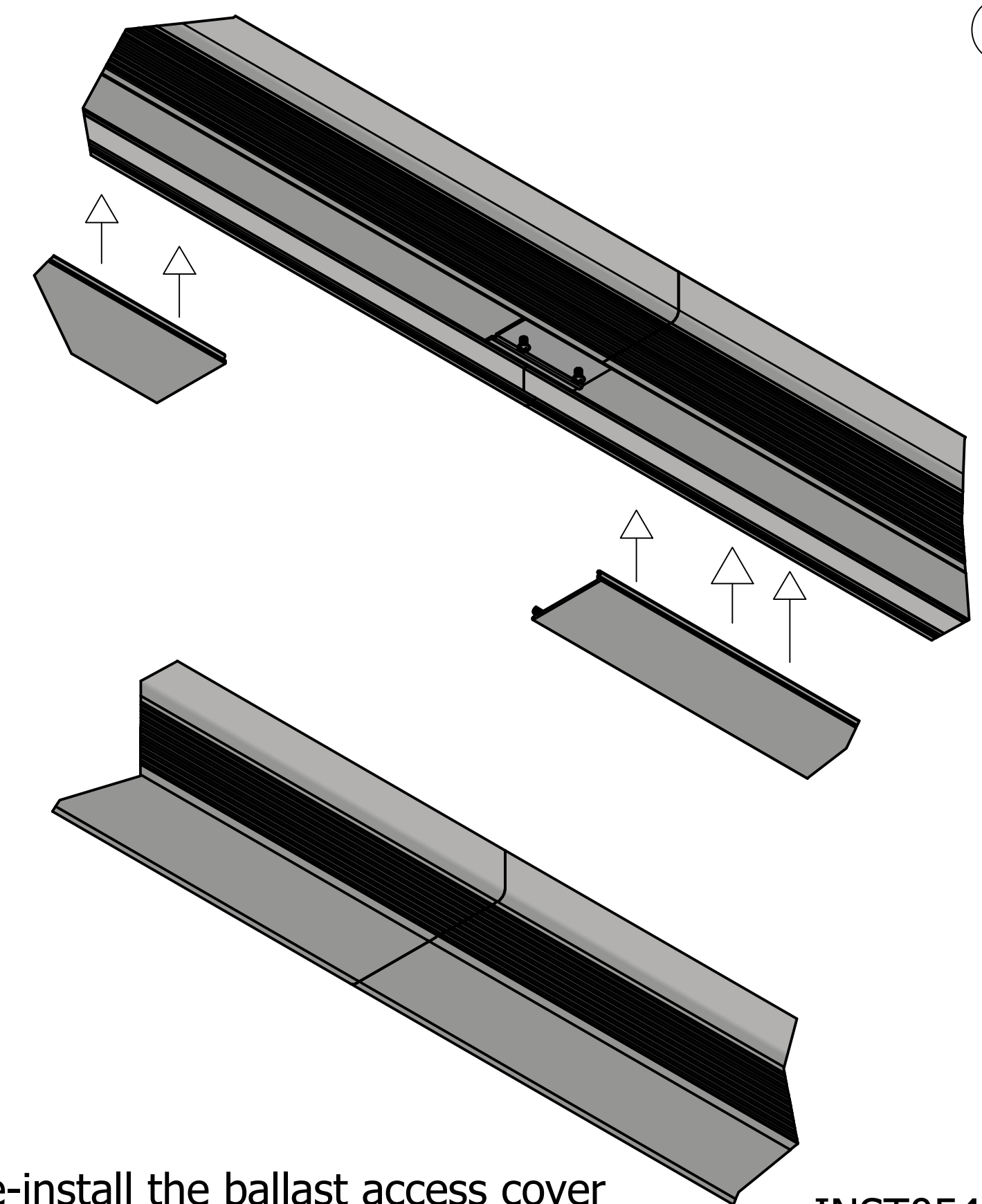
6



if wiring through end cap do so now



7



Re-install the ballast access cover