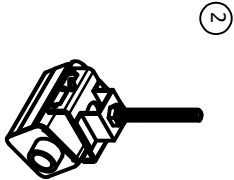
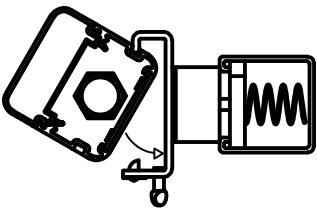


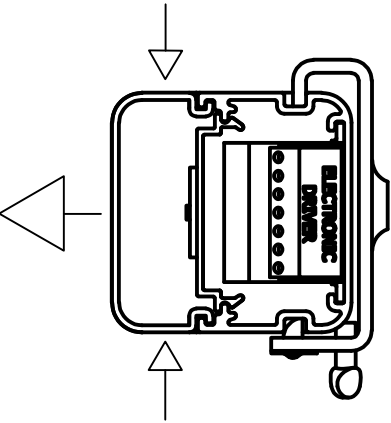
1 install hanger for feed end



2 install feed into hanger



3 squeeze in on both sides of diffuser and pull downward to remove as indicated by the arrows on the drawing in step 3

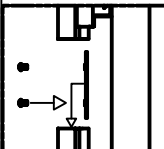


4 using a putty knife or flat bladed screwdriver pop open the wire access panels on the bottom of the fixture at both ends

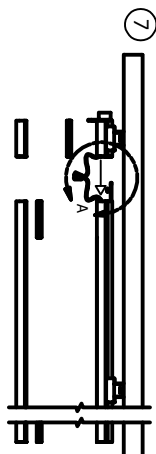


5 INSTALL FIXTURE

6 Slide the coupler into the extruded slots of the fixture then tighten down screw to lock into position (DO NOT OVER TIGHTEN)



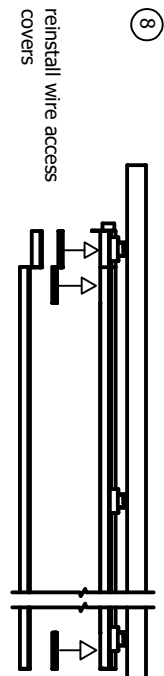
repeat steps 3 & 4 on fixture to set up a continuous row



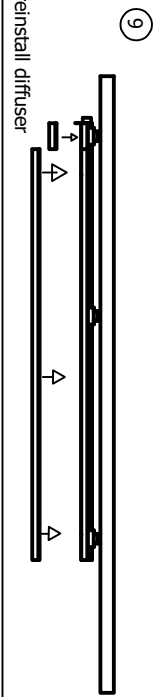
7 slide the feed onto the other half of the coupler make wire connections tighten the other screw down on the coupler



DETAIL A SCALE 1 / 3



8 reinstall wire access covers



9 reinstall diffuser

