



LUMENFLO

SPECIFICATION SHEET

OVERVIEW

Architectural luminaires proudly built in America since 1935. The Lumenflo is a mullion or wall mountable architectural fixture designed for exterior or interior use with an asymmetric throw. Linear luminaire available in lengths from 1'-8'. Three standard lumen packages available with custom capabilities as well up to 3600 lumens per foot. Standard finish options include powdercoat black, white or silver with custom options available upon request. Multiple circuit and battery options to suit local code.

DETAILS

01 Housing

Extruded aluminum body powder coated finish. Extruded high diffusion acrylic gasketed lens. Die cast aluminum gasketed end caps.

02 Electrical

Integral 120/277V driver standard. If 0-10V dimming is specified 100-1% is standard. Dual drivers available. Integral battery backups are also available, cold weather battery optional.

03 LED Array

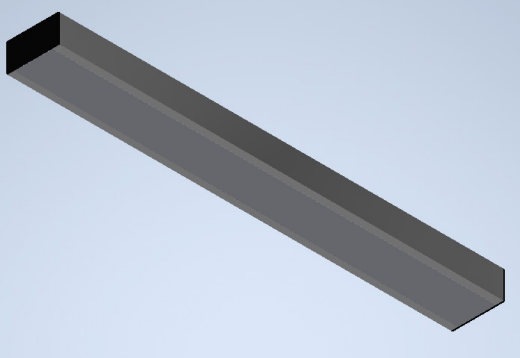
Dual array standard, high quality chips, delivering 127 lumens per watt on the system level, mounted on an aluminum heatsink for thermal management and extended life.

04 Mounting options

Mullion direct or Surface (wall) mount.

KEY FEATURES

- **BABAA Compliant**
Hand crafted in California
- **L70>72,000 hours**
High quality electrical components
- **90+ CRI Standard**
High definition color rendering
- **IP65 Rated**
Suitable for exterior use
- **Asymmetric throw**
Provides path of egress



BUILD A PART NUMBER

• SERIES	• LIGHT OUTPUT	• CCT	• LENGTH IN INCHES	• HOUSING COLOR	• OPTIONS
• LMF					
• LMF	<ul style="list-style-type: none"> • N NORMAL • H HIGH • V VERY HIGH • CUSTOM/ SPECIFY 	<ul style="list-style-type: none"> • 27K • 30K • 35K • 40K • 50K • TW • RGBW 	<ul style="list-style-type: none"> • 24 • 36 • 48 • 60 • 72 • 84 • 96 	<ul style="list-style-type: none"> • 0 SILVER • 3 WHITE • 5 BLACK • CUSTOM 	<ul style="list-style-type: none"> • D11: 1% 0-10V DIMMING • EM : 10W INTEGRAL BATTERY • EMC: 10W COLD WTHR BATTERY • 2XD: 2 INDEPENDENT DRIVERS • EF: END FEED** • MS: MICROWAVE SENSOR*

CERTIFICATION / WARRANTY

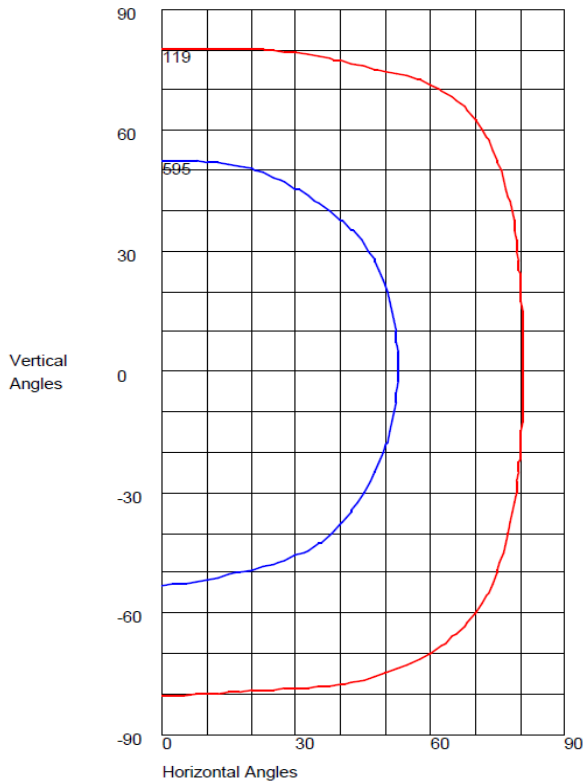


ETL Listed for wet locations



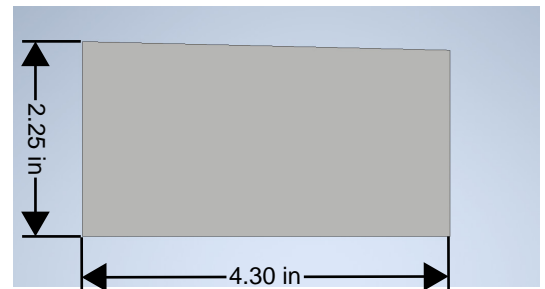
- * MICROWAVE SENSOR HAS DARK SPOT ON LENS
- **STANDARD FEED FROM BACK

ISOCANDELA CURVE



- [IES file](#)
- [installation instructions](#)

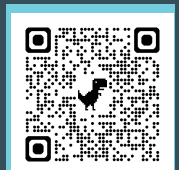
• OUTPUT	• WATTAGE PER FOOT	• LUMENS PER FOOT
• NORMAL	• 12.4	• 1579
• HIGH	• 18.6	• 2343
• VERY HIGH	• 25	• 3125



CONTACT US!

www.airy-thompson.com

Phone: 800.421.6196



• LMF-CUT-26B



AIREY-THOMPSON®
Manufacturing Quality Luminaires

TYPICAL APPLICATION

Wide flood distribution ideal for building perimeters, walkways, and egress applications.

FOOT-CANDLE SUMMARY *

Mounting Height: 10 FT

Distance from Wall	Foot-Candles (FC)
0 FT (at wall)	10.0 FC
10 FT	5.0 FC
20 FT	2.0 FC
30 FT	1.0 FC
40 FT	0.5 FC
60 FT	0.2 FC



160° FIELD ANGLE

Wide uniform coverage for enhanced perimeter illumination.



105° BEAM ANGLE (50%)

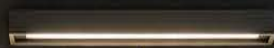
Symmetrical forward throw with excellent uniformity.



3158 LUMENS *

High efficacy illumination at only 24.83W.

Photometric data per IES LM-79-19
Report No: L052610601



MOUNTING
HEIGHT
10 FT

PHOTOMETRIC DATA *

Max Candela: 1190

Beam Angle (50%): 105°

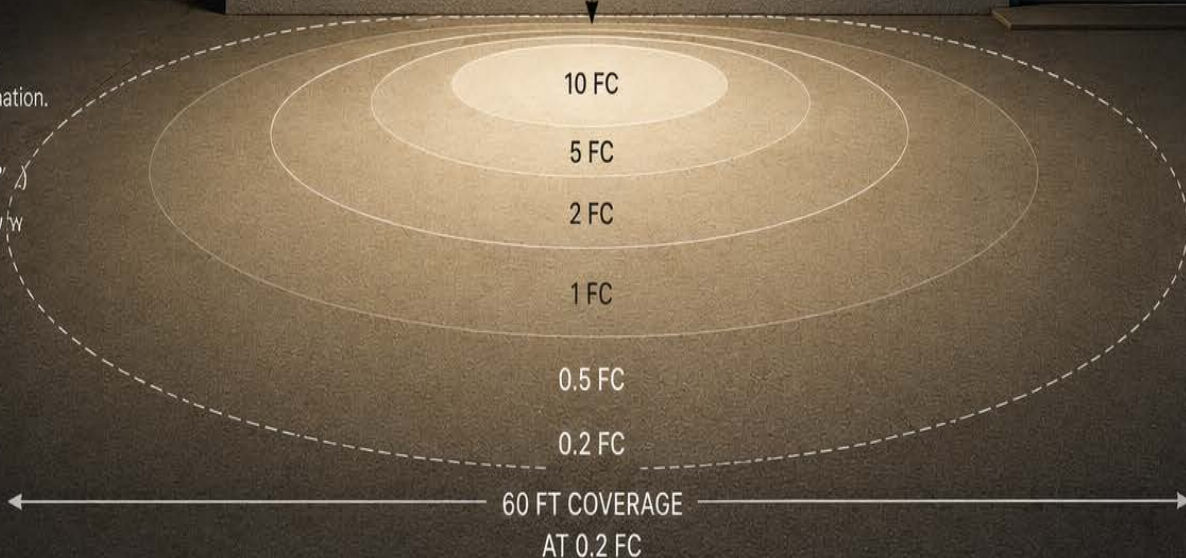
Field Angle (10%): 160°

Total Lumens: 3158

Total Power: 24.83W

Efficacy: 127.18 LPW

*Data based on 2' normal output fixture



CONTACT US!

www.airey-thompson.com

Phone: 800.421.6196



• LMF-CUT-26B