

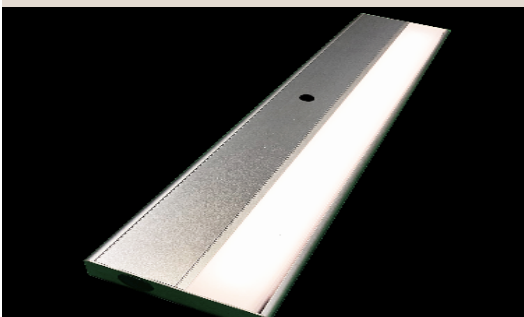
13TF UNDER CABINET SPECIFICATION SHEET

OVERVIEW

Architectural luminaires proudly built in America since 1935. The 13TF series is a spec grade under cabinet/task light luminaire available in lengths from 1'-8'. This comes with a proximity sensor which has touch free controls. Three standard lumen packages available with custom capabilities as well up to lumens per foot. Standard finish options include powdercoat white or black or satin anodized with custom options available upon request.

KEY FEATURES

- **BABAA Compliant**
Hand crafted in California
- **L70>72,000 hours**
High quality electrical components
- **95+ CRI Standard**
High definition color rendering
- **<3SDMC consistency**
Uniform color consistency
- **73 Lumens per watt**
Efficient performance delivered



DETAILS

01 Housing

Extruded aluminum body powder coated or anodized finish. Extruded high diffusion acrylic lens. Aluminum end caps with no visible fasteners.

02 Electrical

Integral 120/277V, 50/60HZ driver standard. On/Off and Dimming touch free via proximity sensor.

03 LED Array

High quality Samsung chips, delivering 73 lumens per watt on the system level, mounted on an aluminum heat sink for thermal management.

04 Mounting options

Surface direct or magnet mount available.

BUILD A PART NUMBER

• SERIES	• LIGHT OUTPUT	• CCT	• LENGTH IN INCHES	• HOUSING COLOR	• OPTIONS
• 13TF					
• 13TF	<ul style="list-style-type: none"> • N NORMAL • H HIGH 	<ul style="list-style-type: none"> • 27K • 30K • 35K • 40K 	<ul style="list-style-type: none"> • 12 • 18 • 24 • 36 • 48 • 60 • 72 • 84 • 96 	<ul style="list-style-type: none"> • 0 SATIN • 3 WHITE • 5 BLACK • CUSTOM 	<ul style="list-style-type: none"> • WC 6' WHITE 3-WIRE CORD AND PLUG (18GA. SVT) • F FACTORY WIRED FUSE • SWD DECORA ROCKER SWITCH (120/277V) • AM ANTI MICROBIAL FINISH • GCO FACTORY WIRED GROUNDED CONVICIENCE OUTLET • DD DRIVER DISCONNECT

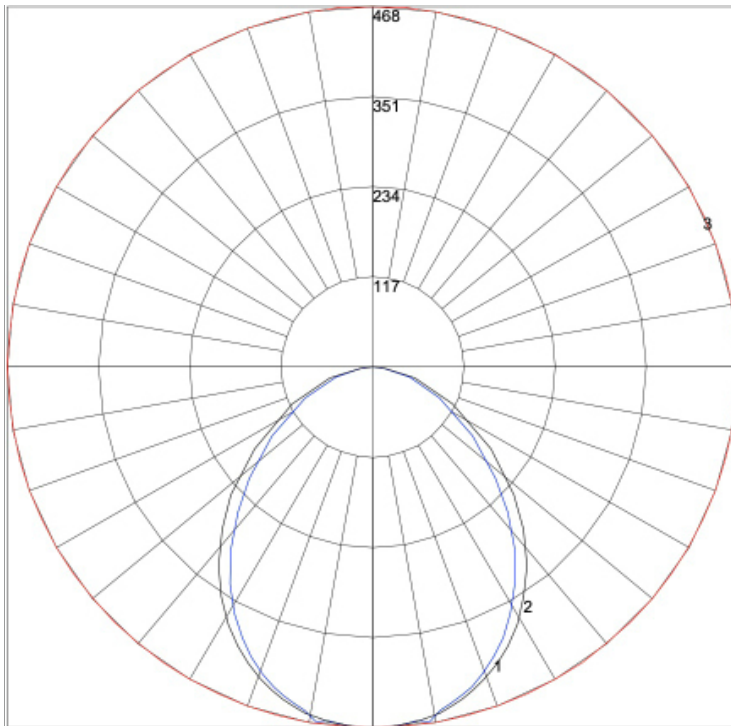
CERTIFICATION / WARRANTY



ETL Listed for dry or damp locations



PHOTOMETRIC PERFORMANCE

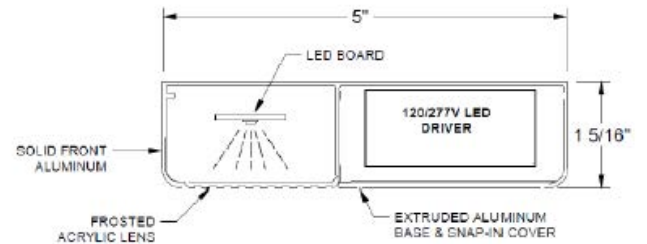


• [IES File link](#)

• [installation instructions link](#)

• LENGTH • WATTAGE • LUMENS

• 12" HIGH	• 8.8	• 641
• 18" HIGH	• 13.2	• 962
• 24" HIGH	• 17.6	• 1283
• 36" HIGH	• 26.2	• 1924
• 48" HIGH	• 38	• 2564

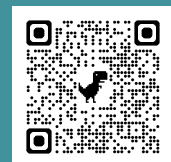


CONTACT US!

www.airey-thompson.com

Phone: 800.421.6196

E-mail: contactus@aireythompson.com



• 13TF-CUT-26A