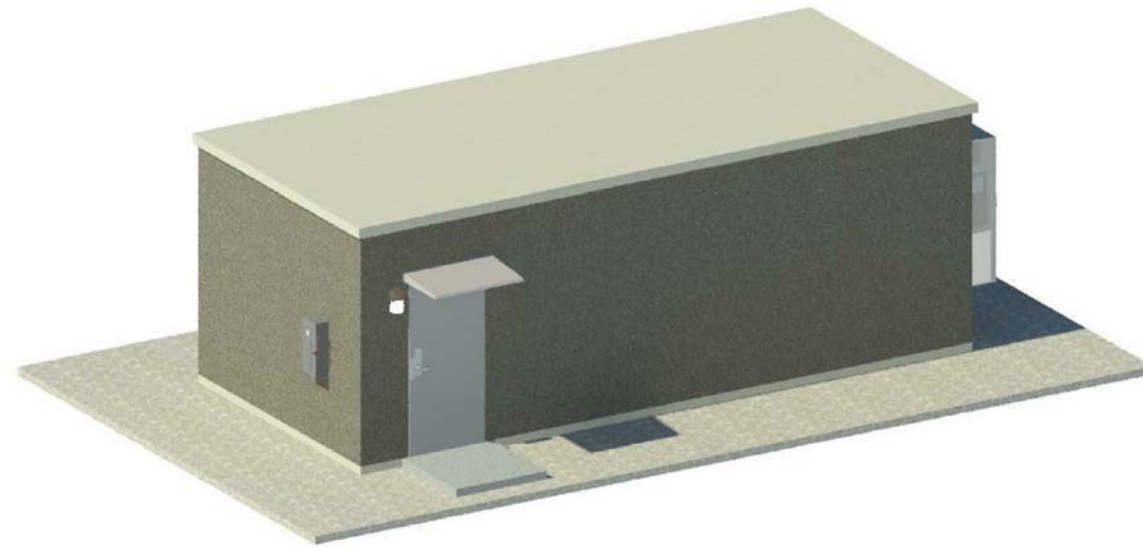


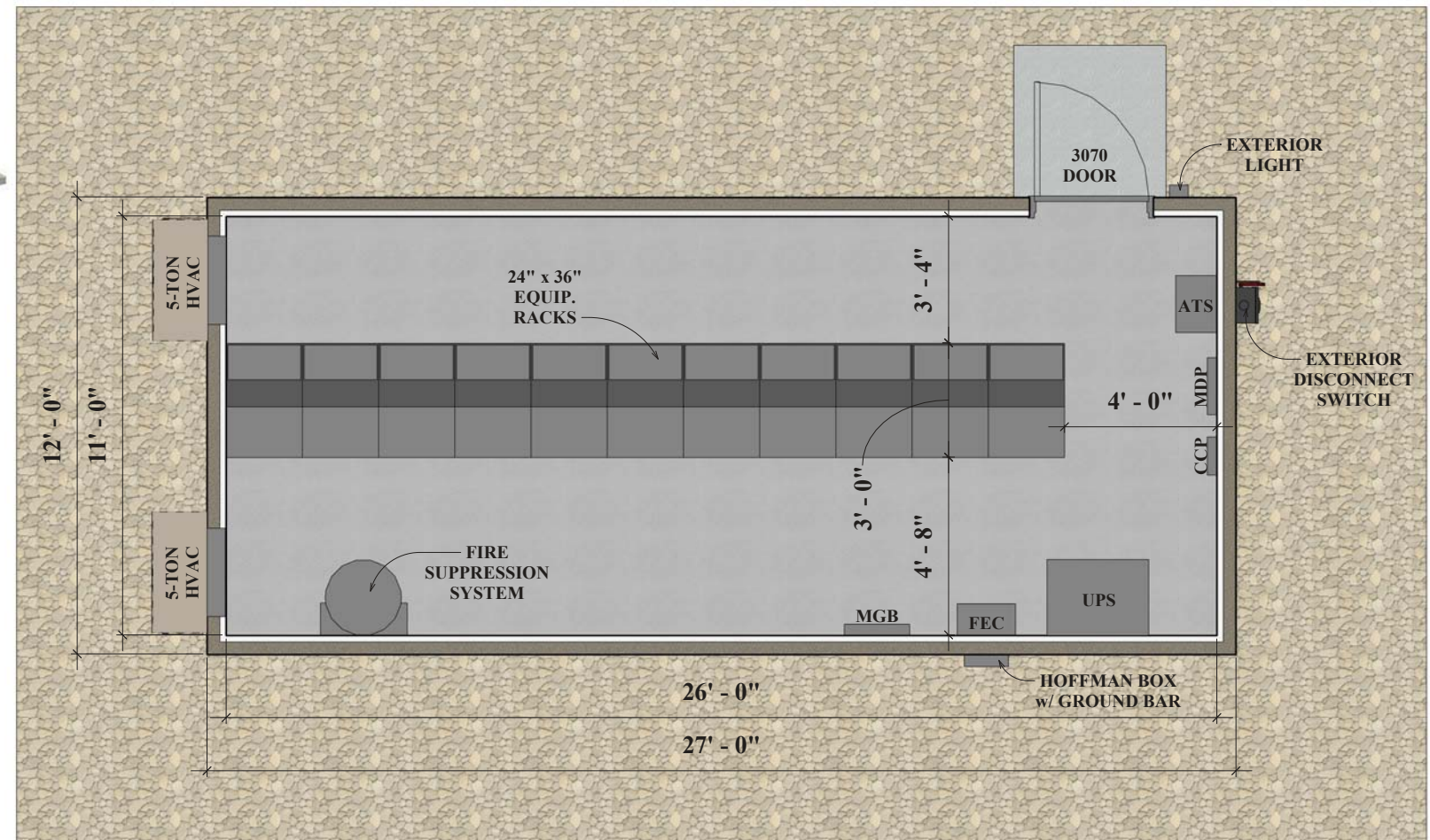
NM NW MANAGEMENT

Modern Skills, Traditional Service

- Details and shelter sizes are not geographically standard and vary with building codes, local work practices and seismic zones.
- Complete turnkey services including site work, foundations, fencing, integration including full complete design services.
- Safeguard your valuable electronic equipment and guarantee the success of your project now and in the future.
- Highest quality & industry best life cycle.
- Most responsive customer service in the industry.



DESIGN SPECIFICATIONS	
Building Model:	RCS - 1227
Building Dimensions:	27'-0" Long x 12'-0" Wide x 10'-2" Tall
Finished Interior Dimensions:	26'-0" Long x 11'-0" Wide x 9'-2" Tall
Weight:	74,000 lbs.
Floor Loading:	250 PSF
Roof Loading:	65 PSF
Wind Speed:	150 MPH
Floor Thickness:	6" Thick
Roof Thickness:	4-1/2" Thick
Concrete:	5000 psi Lightweight Aggregate
Fire Rating:	2-Hour
Seismic:	Low seismic, <50%G seismic acceleration
Bullet Resistance:	Level IV: 30-06 Fired from 15'
Electrical:	200A



FLOOR PLAN
NOT TO SCALE

RCS - 1227