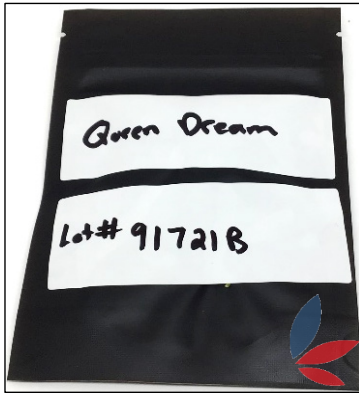


## Queen Dream (Lot: 91721B)



### Legit Hemp LLC

License Number: 12\_4188a1ea

**Order ID#:** 20211116-1333

Lab Code#: LC-20211116-3387

Product Type: Flower

Lot designation: 91721B

# of clippings: NA

Initial Weight (g): 2.54

Sample date: 19-Nov-2021

Date received: 22-Nov-2021

Completed: 24-Nov-2021

## CANNABINOIDS

**Analysis Batch:** WO-21112202  
**Analysis Date:** Tuesday, November 23, 2021

**Test Method:** SOP 6.6  
**Instrument:** Agilent HPLC, Instrument 33

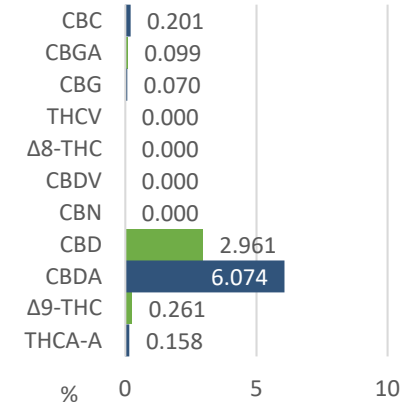
Analyte	% <sup>a</sup>	mg/g	MU Range (%)
THCA-A	0.158	1.577	0.107 - 0.209
Δ9-THC	0.261	2.607	0.215 - 0.307
CBDA	6.07	60.74	5.973 - 6.175
CBD	2.96	29.61	2.819 - 3.103
CBN	ND	ND	ND
CBDV	ND	ND	ND
Δ8-THC	ND	ND	ND
THCV	ND	ND	ND
CBG	0.070	0.7020	0.016 - 0.124
CBGA	0.099	0.9875	0.02 - 0.178
CBC	0.201	2.010	0.123 - 0.279
<b>Total:</b>	<b>9.82</b>	<b>98.23</b>	

**Total THC<sup>b</sup>**  
0.399%

**Total CBD<sup>c</sup>**  
8.29%

**TOTAL<sup>d</sup>**  
9.82%

### Potency Profile



<sup>a</sup> Detection Level = 0.03% by dry-weight.

<sup>b</sup> THC is calculated as %THC + (%THCA × 0.877). MU<sub>THC</sub> = ±0.05%

<sup>c</sup> CBD is calculated as %CBD + (%CBDA × 0.877).

<sup>d</sup> The absolute sum of all cannabinoids above the level of detection.

## MOISTURE

6.44%

Test Method: SOP 6.6  
 Instrument: E15  
 Analysis Date: 23-Nov-2021



### Comments:

Revised for format.

### Authorization



Steven Perez, Laboratory Director  
 Approval Date: 4-Nov-2022

Test results are based solely upon the test article submitted to Americanna Laboratories, LLC in the condition it was received. Americanna Laboratories, LLC warrants that all analytical work was conducted in a professional manner in accordance with the requirements of ISO/IEC 17025:2017, such as comparison to Certified Reference Materials and NIST traceable Reference Standards. This report shall not be reproduced, except in its entirety, without the written approval of Americanna Laboratories, LLC. Test results are confidential unless explicitly waived. Void after 1 year from test end date.

ND=Not Detected, NT=Not Tested, ppm=Parts Per Million, ppb=Parts Per Billion, MU=Measurement Uncertainty. Limit of Detection (LOD) and Limit of Quantitation (LOQ) are terms used to describe the smallest concentration that can be reliably measured by an analytical procedure.

- end of report -