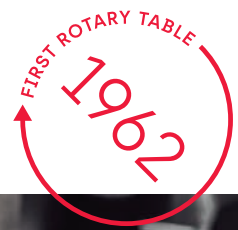




ZEATZ

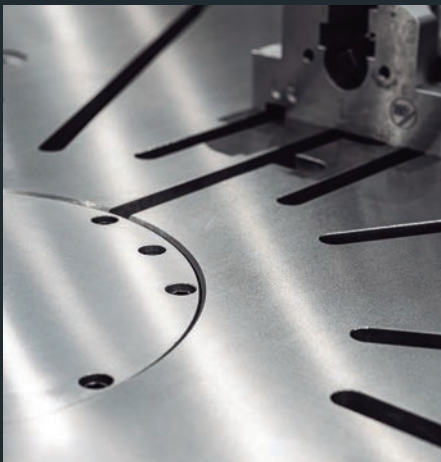
Fitting your projects



Custom design
and development
on rotary tables

CAS DEU ITA ENG





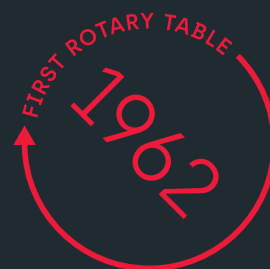


ZEATZ

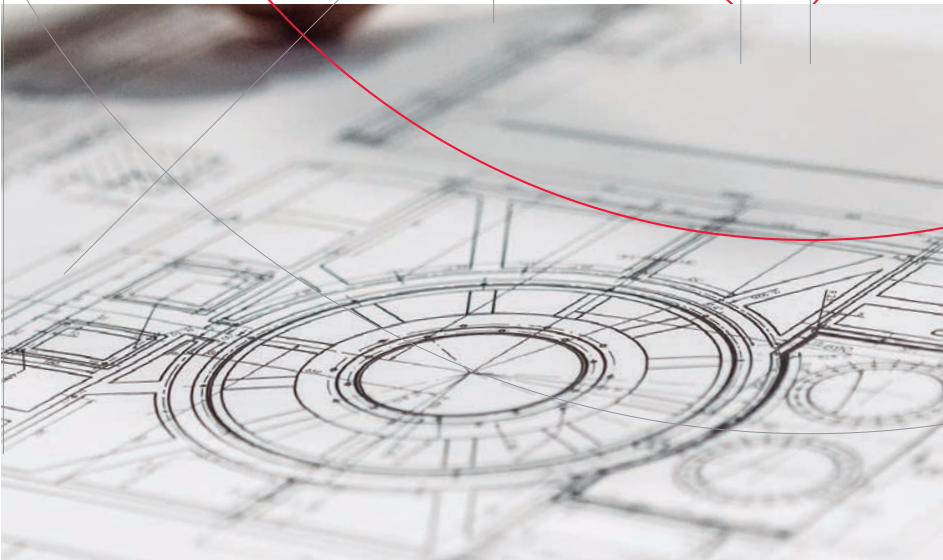
Specialising
in bespoke designs
for rotary tables
and dividing plates.

In 1962 Zeatz was the first company to specialise in the manufacture of rotary tables at a national level. Thanks to 60 years of experience serving the machine tool sector, it provides flexible solutions and customised design.

Zeatz Innovation, its own engineering department, develops innovative technical solutions from the smallest rotary table to the biggest.



Fitting your projects



Fitting your project is our philosophy.

This is a statement of intent of how Zeatz faces each project.

Find the best solution for manufacturers
of mechanised centres, milling, boring, etc.



FLEXIBILITY.

This is Zeatz's greatest value. It offers flexible solutions for each project according to the customer's needs. From the smallest rotary table to the largest one. Flexibility in all projects.



CUSTOMISATION.

100% personalisation of our projects maintaining direct and close contact with the customer.



SOLVENCY.

Zeatz's solutions quality is recognised by its high precision and rigidity tested on every project.



EXPERTISE.

Zeatz makes the difference due to its capacity and experience in special projects and big plates.

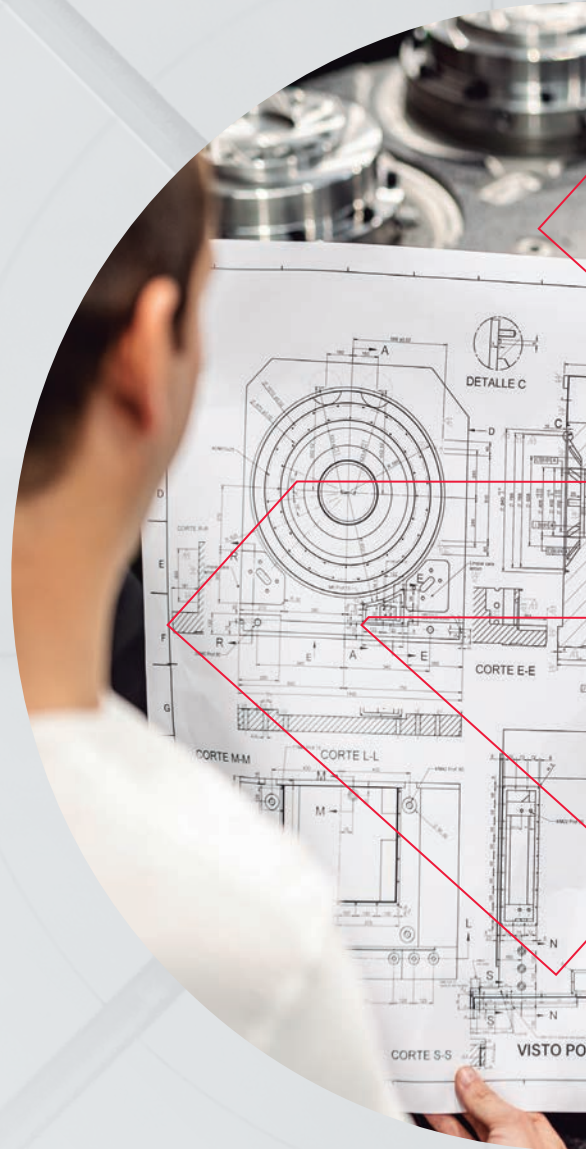
ZEATZ

ZEATZ INNOVATION. Engineering and assistance.

Zeatz Innovation is essential to fulfil the philosophy of Fitting your project. It is made up of our own technical department of engineers and mechanics. Its mission is to investigate, develop and provide valuable technical solutions to the clients, with the latest generation machinery and instruments and the knowledge for the innovative use of technology.

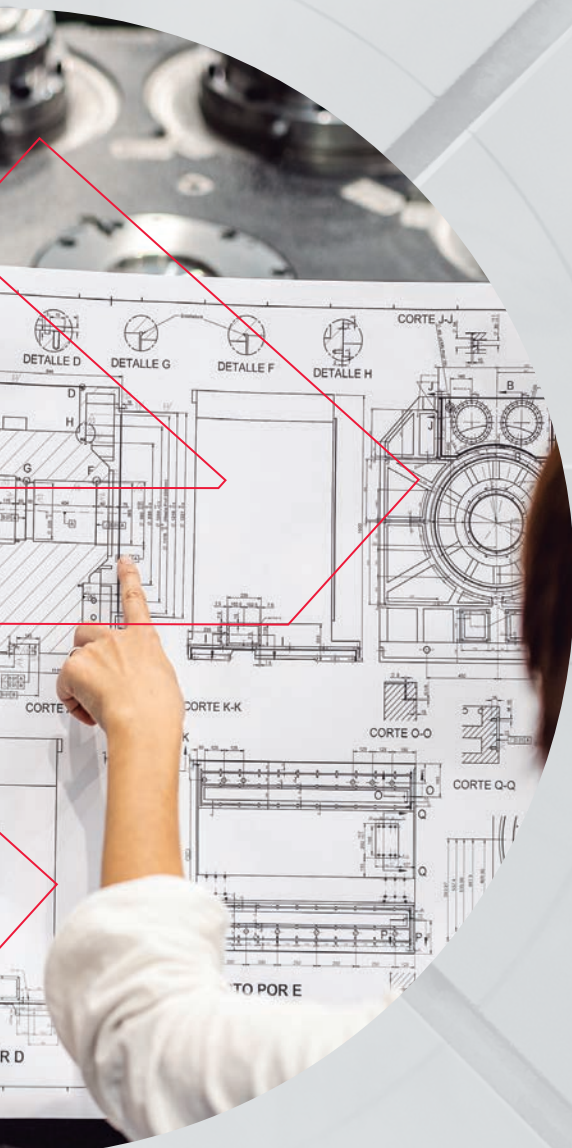
International post-sales service. Our own network of distributors.

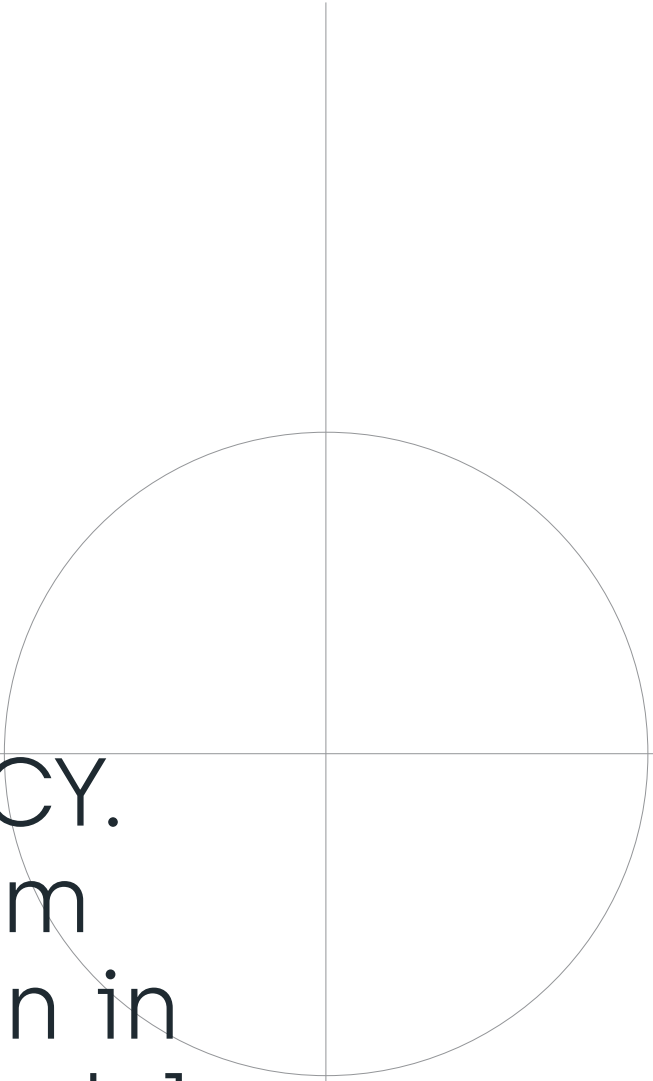
Zeatz also has a technical assistance team for the application maintenance both at the customer's home and at the company's premises. This team can carry out the electronic and mechanical installation of the rotary table on your machine. Zeatz uses original spare parts for this service.



ZEATZ RETROFITTING

Zeatz not only manufactures, but also offers **technical assistance, reconversion, repair and maintenance service** of rotary tables made by different brands.





SOLVENCY. Maximum precision in each model.

The renowned quality and precision of Zeatz rotary tables is demonstrated and proven in every project. The manufactured articles go through the quality control department to make all the **technical and geometrical verifications** by our own engineering and mechanical department.

Angular checks are carried out in Zeatz's quality control department by means of a **Renishaw Interferometric Laser System** with which we measure angularity, positioning, straightness, and more. This check can also be carried out at the customer's premises.

These detailed verifications guarantee compliance with UNE 15300-2 standards, UNE 15450-2 and VDI/DGQ 3441.

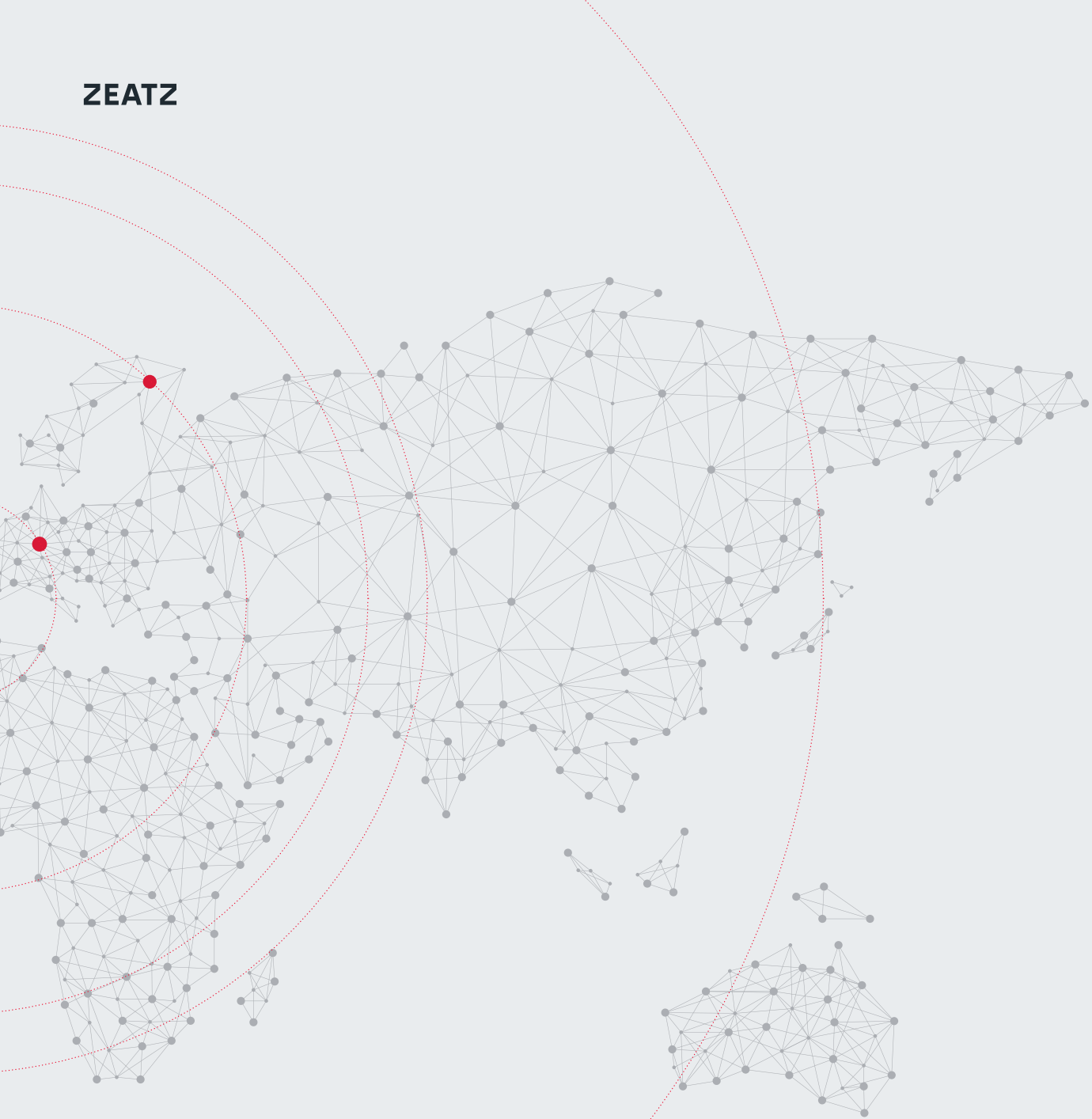
Zeatz also has ISO-9001 quality management system and ISO-14001 certification from the company Aquacert, which guarantees a high-level of quality in all procedures.



ZEATZ



GLOBAL
PRESENCE.
Design and manufacture
in the Basque Country.



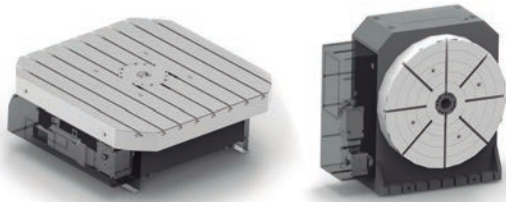
Zeatz products are designed and manufactured in the Basque Country. An industrial environment recognised by the world machine tool sector in the research and manufacture of tailored solutions. Its **engineering, design, production and quality control** departments are grouped together in its 2000m² premises.

Zeatz has exclusive distributors in the United States, South America, Asia and Africa, and in Europe it provides a service from its central office and with local agents in European countries for a technical service close to the customer.

Logistics. Strategic location of the premises for the national and European market. Worldwide logistics solutions.

MAXIMUM PRECISION IN EACH MODEL.

PH-PHV Dual Lead



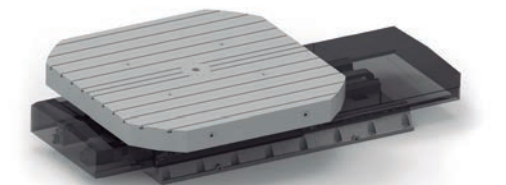
- **Turning system:** "Worm drive" - "Dual lead".
- **Operating position:** Horizontal and vertical.
- **Application field:** Milling and drilling.
- **Functions:** Positioning, Continuous rotation and Interpolation.
- **Allowed work piece weight:** 20000 kg.

PH-PHV Twin Drive



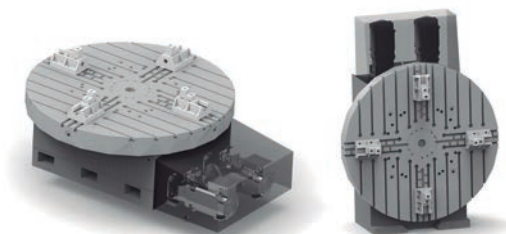
- **Turning system:** "Pinion Gear" - "Twin drive".
- **Operating position:** Horizontal and Vertical.
- **Application field:** Milling and Drilling.
- **Functions:** Positioning, Continuous rotation and Interpolation.
- **Maximum standard work piece weight:** 60000 kg.

PHL Linear



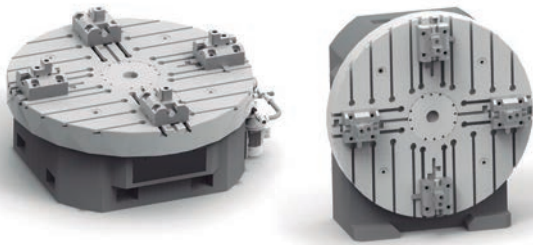
- **Turning system:** "Twin drive", "Dual lead" or Direct motor.
- **Field of application:** Turning, Grinding, Milling, Drilling.
- **Functions:** Fast rotation, High-precision positioning and Interpolation.
- **Maximum standard work piece weight:** 60000 kg.

PHT- PHVT Turning



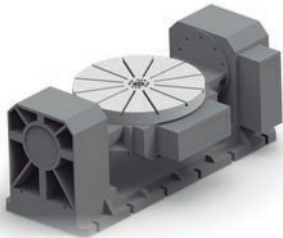
- **Turning system:** Direct motor.
- **Field of application:** Turning, Grinding, Milling, Drilling.
- **Functions:** Fast turning, Highly precise positioning and Interpolation.
- **Maximum standard work piece weight:** 50000 kg.

MDH-MDV Turning



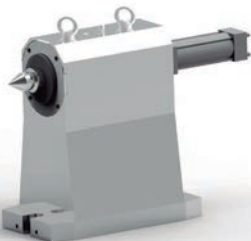
- **Turning system:** "Pinion Gear" - "Twin drive"
2 speed Gearboxes
- **Field of application:** Turning, Grinding, Milling, Drilling.
- **Functions:** Fast turning, Highly precise positioning and Interpolation.
- **Allowed workpiece weights:** Up to 30000 kg.

PT Tilting



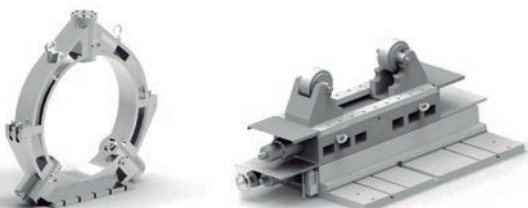
- **Turning system:** "Dual lead".
- **Operating position:** Tilting table.
- **Application field:** Milling and Drilling.
- **Functions:** High-precision positioning and Interpolation.
- **Allowed workpiece weights:** Up to 20000 kg.

Tailstock



- Dead or rotary quill.
- Adapted to Morse Taper.
- Manual or automatic movement option.
- Standard or special quill displacement.

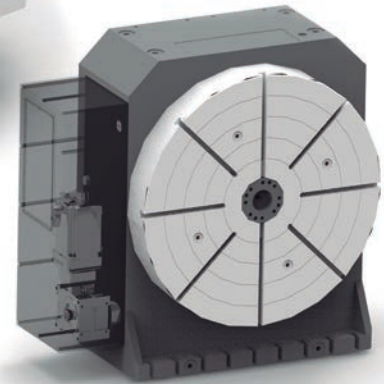
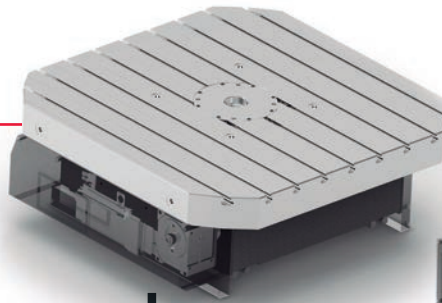
Steady rest



- Different models of steady rests according to use.
- Adapted to the dimensions of the piece.

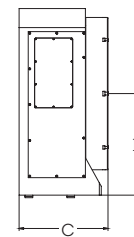
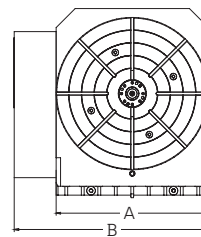
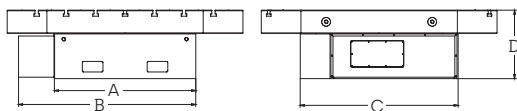
PH-PHV

Dual Lead



- Clamping system with automatic hydraulic lock.
- Working position: Horizontal and Vertical.
- Configurable according to customer's needs.
- Possibility of table plate, levelling or adapted to the customer's bench.
- Possibility of adaptation to different encoder models.
- Possibility to have a through hole.

Measurements:



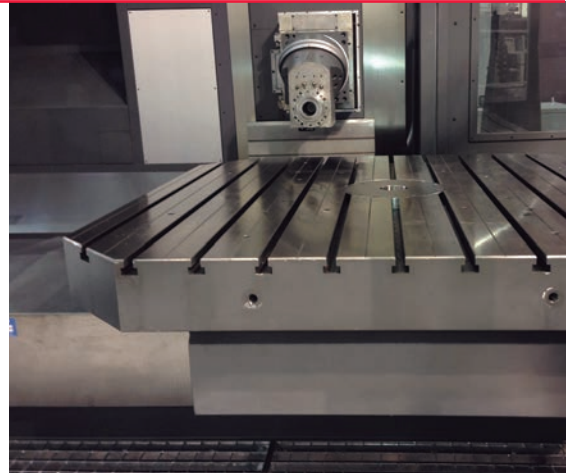
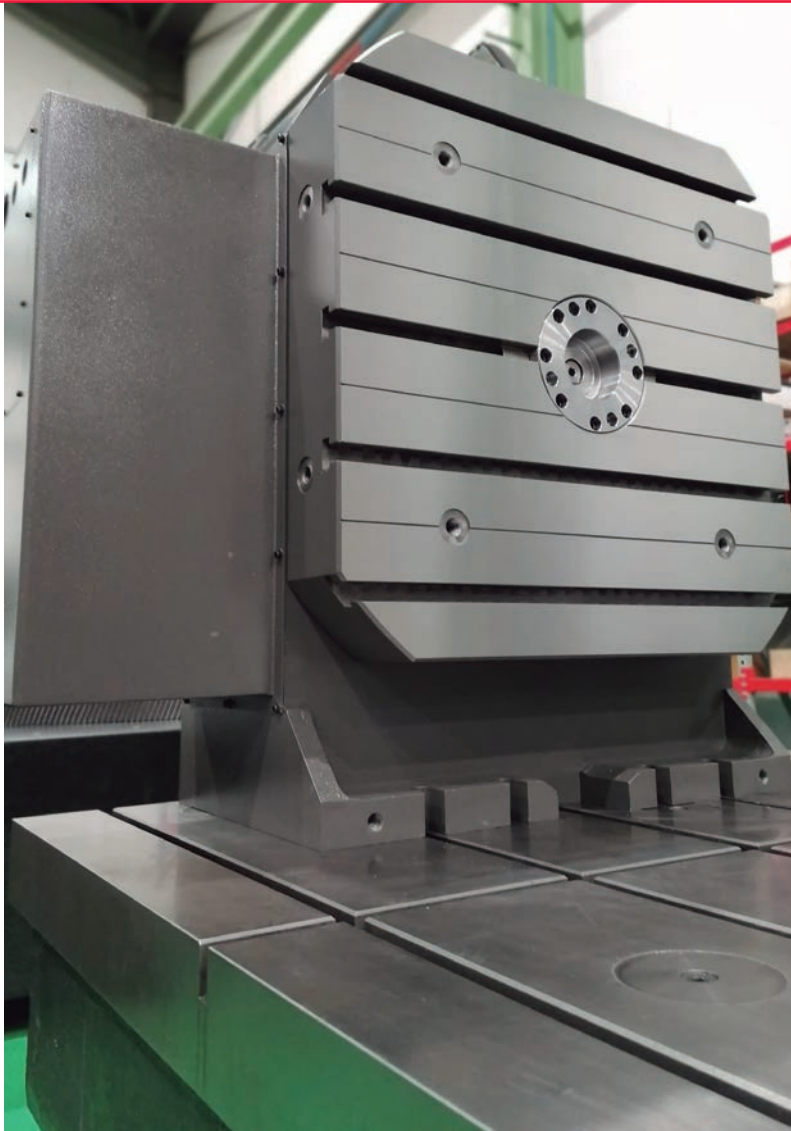
PH	320	450	600	800	1000	1200
A	370	510	600	800	1000	1200
B	570	730	850	1060	1300	1530
C	410	550	670	825	1100	1340
D	270	325	400	500	470	585

PHV	320	450	600	800	1000	1200
A	370	510	600	800	1000	1200
B	570	730	850	1060	1300	1530
C	270	325	400	500	500	700
D	250	325	450	500	650	800

Characteristics:

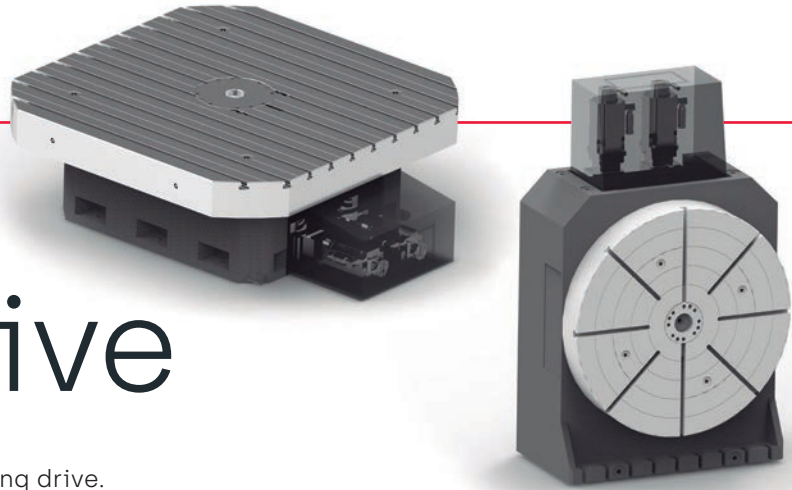
	320	450
Table dimension (mm)	Ø320 / Ø450 320x320 / 450x450	Ø450 / Ø500 450x450 / 500x500
Load capacity [horizontal] [T]	0.8	1.5
Load capacity [vertical] [T]	0.25	0.8
Bearing diameter [mm]	Ø160 - Ø200	Ø250 - Ø330
Turning system	Dual Lead	Dual Lead
Rotating speed (rpm)	7	7
Torque limit during rotary milling [Nm]	1600	3000
Clamping Torque [Nm]	2000	4000
Inertia [kgm ²]	400	800
Max. through hole option [Mm]	Ø120	Ø200

[!] General data subject to change according to configuration.



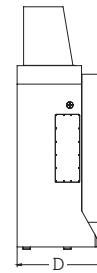
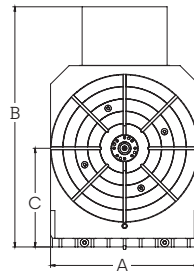
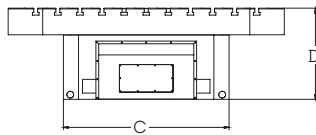
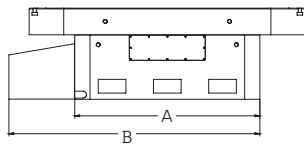
600	800	1000	1200
Ø600 / Ø800 600x600 / 800x800	Ø800 / Ø1000 800x800 / 1000x1000	Ø1000 / Ø1200 1000x1000 / 1200x1200	Ø1200 / Ø1500 1200x1200 / 1500x1500
3	6	10	20
1.5	2.5	3	4
Ø320 - Ø400	Ø440 - Ø540	Ø550 - Ø670	Ø770 - Ø900
Dual Lead	Dual Lead	Dual Lead	Dual Lead
4.9	4.9	4.9	3.6
6000	10000	14000	18000
5000	10000	25000	50000
3000	8000	15000	20000
Ø270	Ø380	Ø480	Ø600

PH-PHV Twin Drive



- "TWIN DRIVE" double pinion gear rotating drive.
- Automatic hydraulic clamping system.
- Working position: Horizontal and Vertical.
- Configurable according to customer's needs.
- Possibility of table plate, levelling or adapted to the customer's bench.
- Possibility of adaptation to different encoder models.
- Possibility to have a through hole.

Measurements:



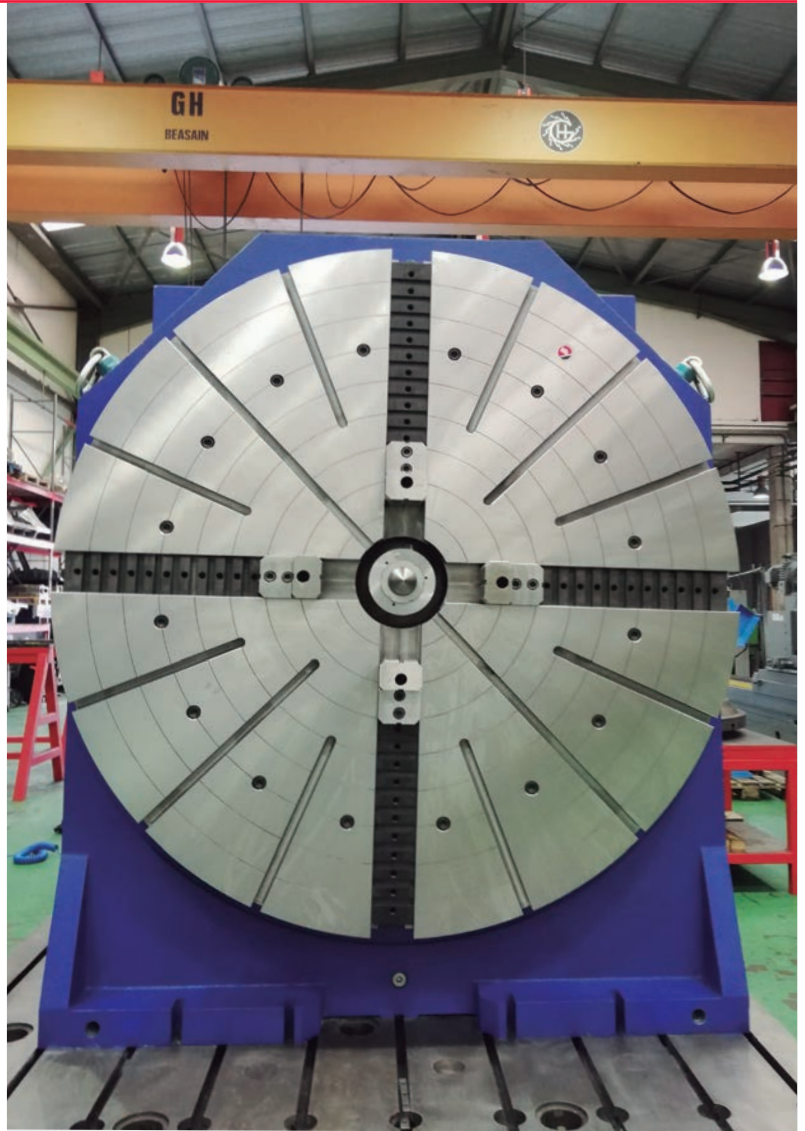
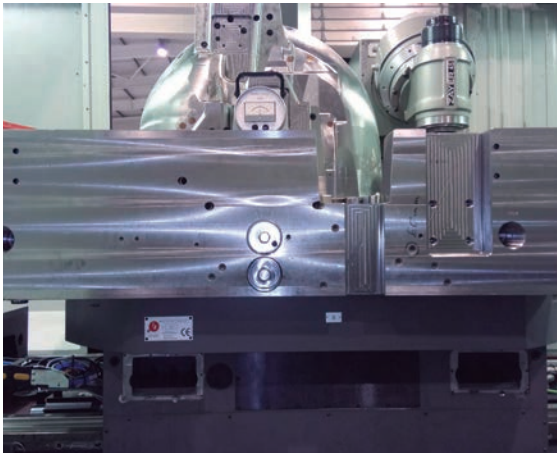
PH	1000	1200	1500	1800	2000	2500
A	1200	1200	1500	1800	2020	2160
B	1600	1675	2000	2275	2525	2550
C	1200	1200	1500	1800	2020	2160
D	575	660	675	675	775	800

PHV	1000	1200	1500	1800	2000	2500
A	1200	1200	1500	1800	2020	2160
B	1650	1875	2400	2575	2815	3115
C	650	800	1150	1200	1300	1400
D	575	660	675	675	775	800

Characteristics:

	1000	1200
Table dimension (mm)	Ø1000 / Ø1200 1000x1000 / 1200x1200	Ø1200 / Ø1500 1200x1200 / 1500x1500
Load capacity [horizontal] [T]	10	20
Load capacity [vertical] [T]	3	4
Bearing diameter [mm]	Ø600 - Ø720	Ø770 - Ø900
Turning system	Twin drive	Twin drive
Rotating speed (rpm)	5	3.6
Torque limit during rotary milling [Nm]	14000	18000
Clamping Torque [Nm]	25000	50000
Inertia [kgm ²]	10000	15000
Max. through hole option [Mm]	Ø480	Ø600

[!] General data subject to change according to configuration.

**1500**

Ø1500 / Ø1800
1500x1500 / 1800x1800

30

6

Ø930 - Ø1130

Twin drive

3.6

30000

58000

30000

1800

Ø1800 / Ø2000
1800x1800 / 2000x2000

40

8

Ø1100 - Ø1400

Twin drive

2.5

40000

70000

80000

2000

Ø2000 / Ø2500
2000x2000 / 2500x2500

50

10

Ø1270 - Ø1530

Twin drive

2.2

50000

87000

130000

2500

Ø2500 / Ø3000
2500x2500 / 3000x3000

60

15

Ø1500 - Ø1800

Twin drive

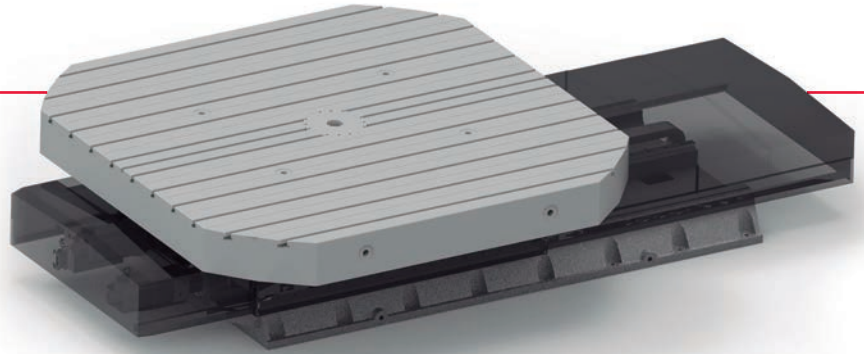
2

60000

110000

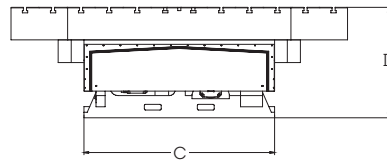
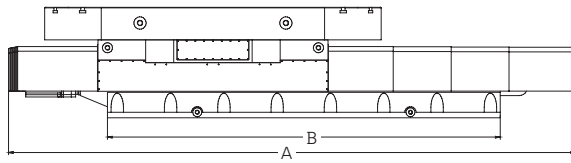
180000

PHL Linear



- "DUAL LEAD" or "TWIN DRIVE" rotating drive according to size.
- Possibility of turning rotary table.
- Automatic hydraulic clamping system.
- Maintenance-free linear guides (5 years/20000km).
- Linear drive with ball screw or rack and pinion depending on the length of the run.
- Working position: Horizontal.
- Configurable according to customer's needs.
- Possibility of adaptation to different encoder models.
- For other linear movements, please consult us.

Measurements:



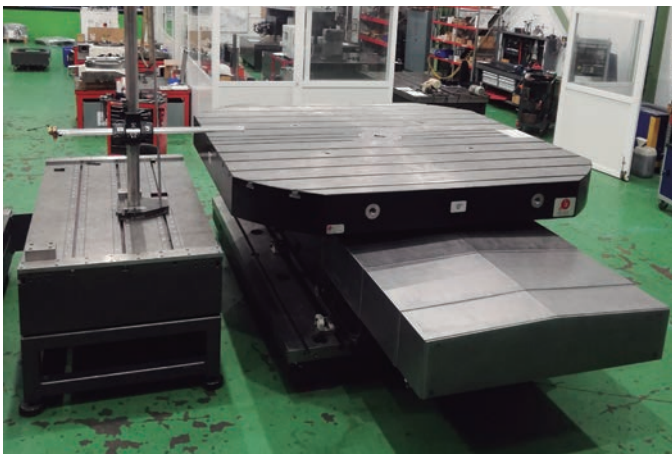
*Dimension "A and B"
corresponding to
the 1500mm run.

PHL	800	1000	1200	1500	1800	2000	2500
A	3350	3975	4275	4450	4675	4875	5050
B	2400	3000	3150	3325	3500	3700	4000
C	800	1000	1000	1200	1500	1800	2200
D	600	675	790	810	850	900	985

Characteristics:

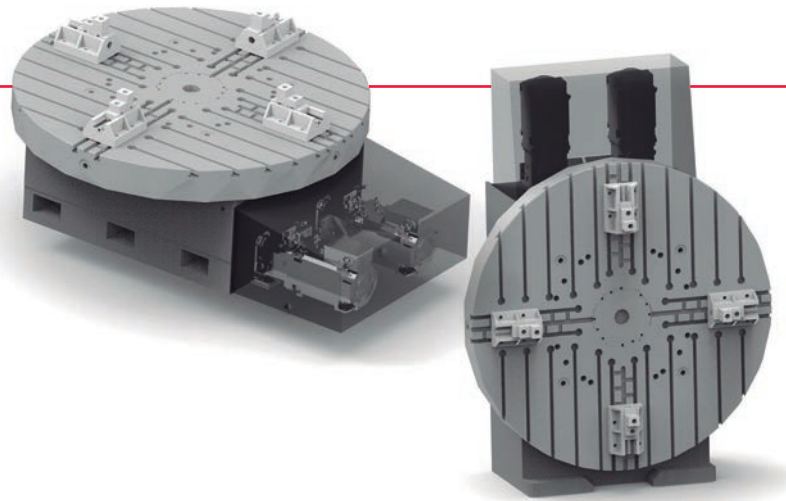
	800	1000	1200
Table dimension [mm]	Ø800 / Ø1000 800x800 / 1000x1000	Ø1000 / Ø1200 1000x1000 / 1200x1200	Ø1200 / Ø1500 1200x1200 / 1500x1500
Load capacity [horizontal] [T]	6	10	20
Linear movement [mm]	1000 - 3000	1000 - 3000	1000 - 3000
Linear speed [m/min]	15	15	15
Bearing diameter [mm]	Ø440 - Ø540	Ø600 - Ø720	Ø770 - Ø900
Turning system	Dual Lead	Dual Lead/Twin drive	Dual Lead/Twin drive
Rotating speed [rpm]	4.9	5	3.6
Torque limit during rotary milling [Nm]	10000	14000	18000
Clamping torque [Nm]	10000	25000	50000
Linear force [N]	11500	16000	23500
Number of linear guides	2	2	2

[!] General data subject to change according to configuration.



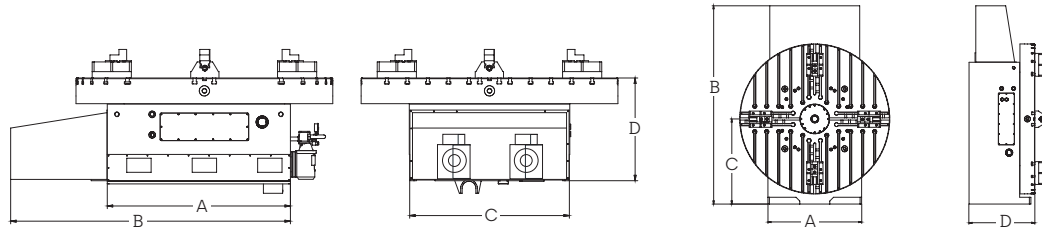
1500	1800	2000	2500
Ø1500 / Ø1800 1500x1500 / 1800x1800	Ø1800 / Ø2000 1800x1800 / 2000x2000	Ø2000 / Ø2500 2000x2000 / 2500x2500	Ø2500 / Ø3000 2500x2500 / 3000x3000
35	40	50	60
1000 - 3000	1000 - 3000	1000 - 3000	1000 - 3000
12	12	12	12
Ø930 - Ø1130	Ø1100 - Ø1400	Ø1270 - Ø1530	Ø1500 - Ø1800
Twin drive	Twin drive	Twin drive	Twin drive
3.6	2.5	2.2	2
30000	40000	50000	60000
58000	70000	87000	110000
42000	42000	53000	53000
2	2	3	3

PHT-PHVT Turning



- Turning and milling uses.
- 2 speed gearboxes.
- "TWIN DRIVE" rotating drive.
- Automatic hydraulic clamping system.
- Working position: Horizontal or Vertical.
- Configurable according to customer's needs.
- Possibility of adaptation to different encoder models.

Measurements:



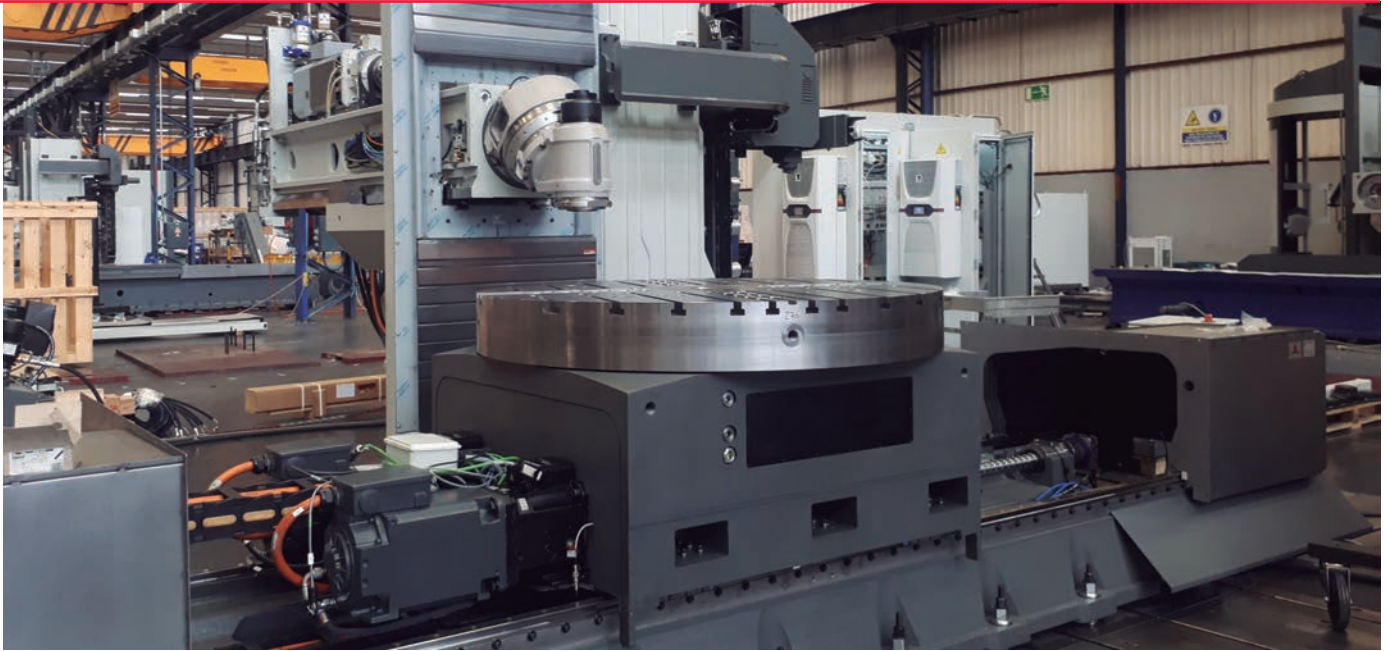
PHT	1000	1200	1500	1800	2000
A	1230	1430	1670	1990	2210
B	1980	2180	2420	2750	2960
C	1050	1250	1500	1800	2000
D	740	800	825	850	900

PHVT	1000	1200	1500	1800	2000
A	1050	1250	1500	1800	2000
B	2200	2480	2720	3050	3260
C	900	1000	1130	1300	1400
D	900	1000	1100	1200	1300

Characteristics:

	1000	1200
Table dimension [mm]	Ø1200	Ø1500
Load capacity [milling] [T]	10	20
Load capacity [Turning] [T]	5	10
Bearing diameter [mm]	Ø470 - Ø725	Ø660 - Ø920
Turning system	Twin drive	Twin drive
Max. torque [Turning] i:1 [Nm]	1700	1700
Max. torque [Milling] i:5.5 [Nm]	12000	15000
Turning speed [Turning] [rpm]	220	220
Turning speed [Milling] [rpm]	30	30
Clamping torque [Nm]	25000	50000

[!] General data subject to change according to configuration.

**1500**

Ø1800
35
18
Ø905 - Ø1160
Twin drive
3500
30000
180
20
58000

1800

Ø2000
40
25
Ø1220 - Ø1480
Twin drive
5300
48000
120
13
70000

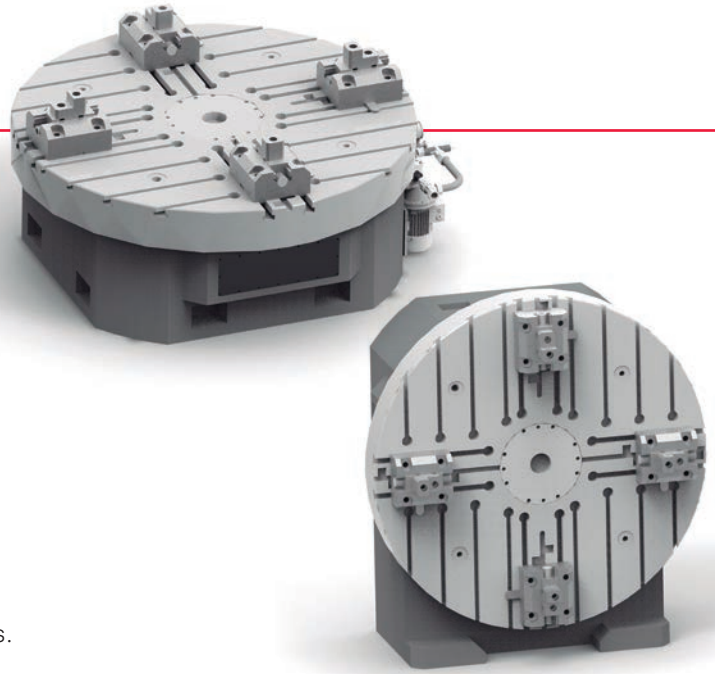
2000

Ø2500
50
30
Ø1450 - Ø1650
Twin drive
8900
81000
100
11
87000

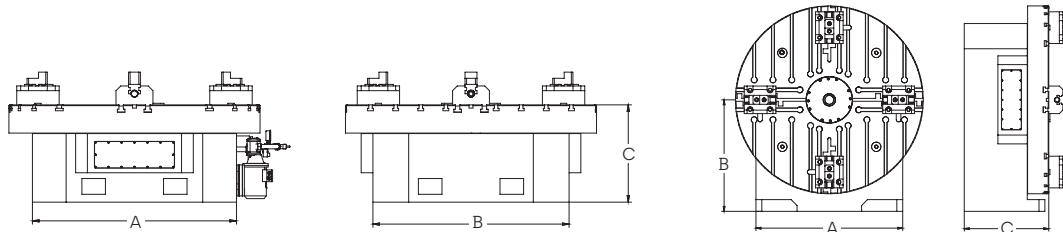
MDH-MDV

Turning

- Turning and milling uses.
- Direct drive motor.
- Automatic hydraulic clamping system.
- Working position: Horizontal or Vertical.
- Configurable according to customer's needs.
- Possibility of adaptation to different encoder models.



Measurements:



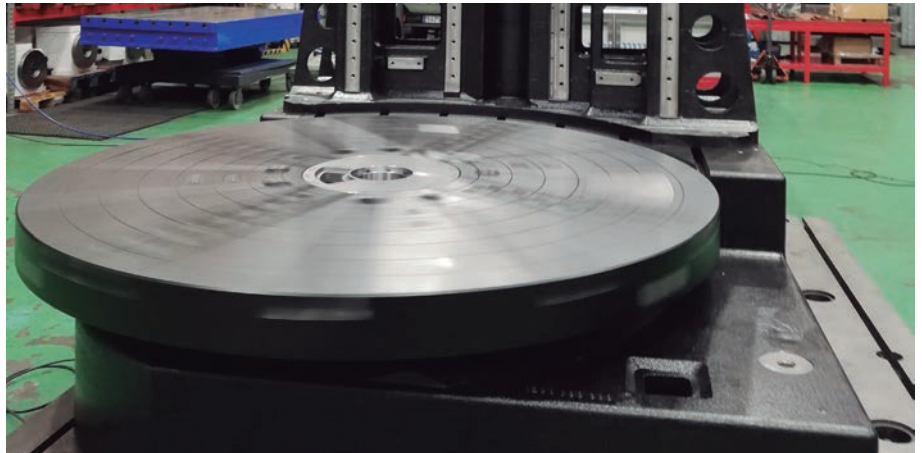
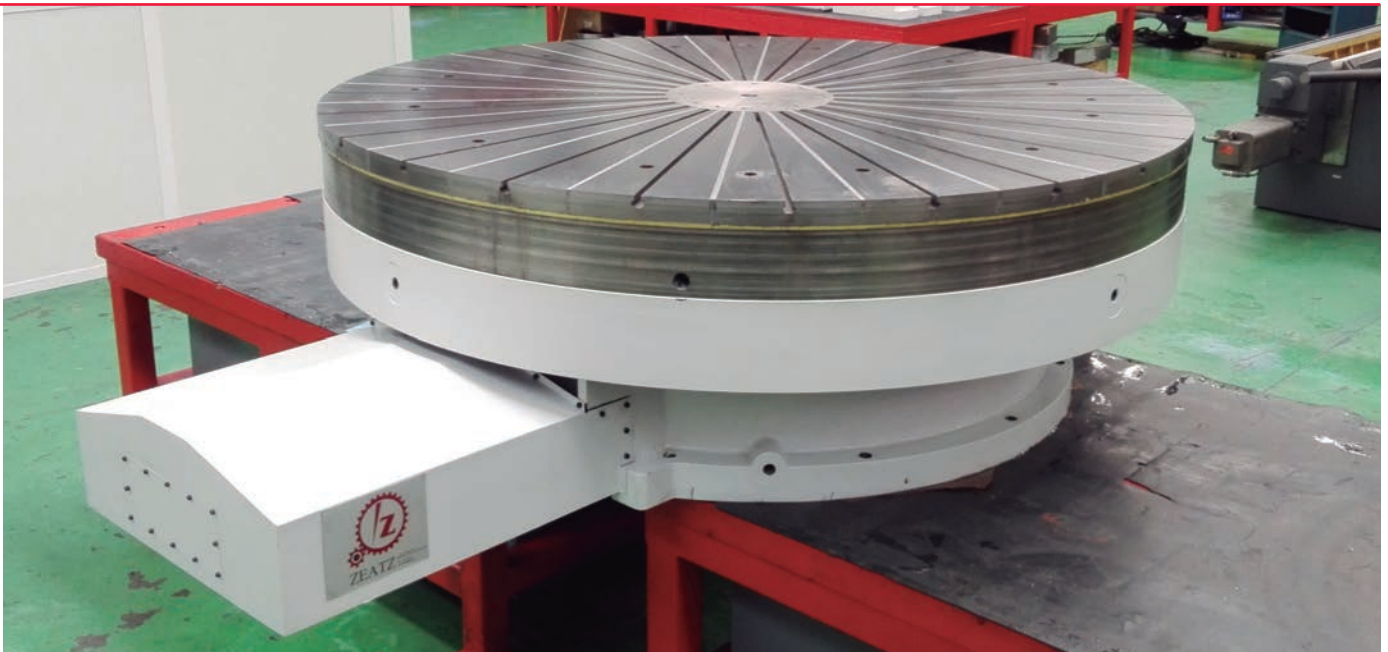
MDH	1000	1200	1500	1800	2000
A	1050	1150	1300	1550	1800
B	1050	1150	1300	1550	1800
C	500	570	625	675	700

MDV	1000	1200	1500	1800	2000
A	1050	1150	1300	1550	1800
B	800	875	950	1000	1200
C	650	720	775	825	850

Characteristics:

	1000	1200
Table dimension [mm]	Ø1200	Ø1500
Load capacity [milling] [T]	10	15
Load capacity [Turning] [T]	5	8
Bearing diameter [mm]	Ø480 - Ø720	Ø625 - Ø860
Turning system	Direct drive	Direct drive
Max. torque [Turning] i:1 [Nm]	2130	3230
Max. torque [Milling] i:5.5 [Nm]	3320	4990
Turning speed [Turning] [rpm]	303	202
Turning speed [Milling] [rpm]	493	329
Clamping torque [Nm]	25000	50000

[!] General data subject to change according to configuration.

**1500**

Ø1800
20
10
Ø870 - Ø1105
Direct drive
6660
11200
140
234
58000

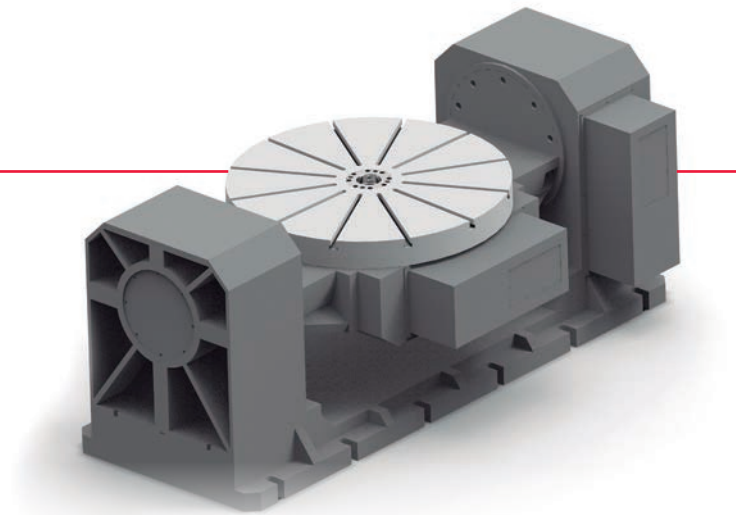
1800

Ø2000
25
15
Ø1110 - Ø1345
Direct drive
7150
13300
170
276
70000

2000

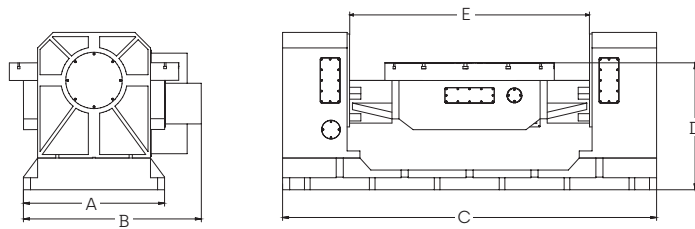
Ø2500
30
18
Ø1300 - Ø1540
Direct drive
10800
19900
110
184
87000

PT Tilting



- "DUAL LEAD" endless-crown rotating drive.
- Automatic hydraulic clamping system.
- Configurable according to customer's needs.
- Possibility of adaptation to different encoder models.

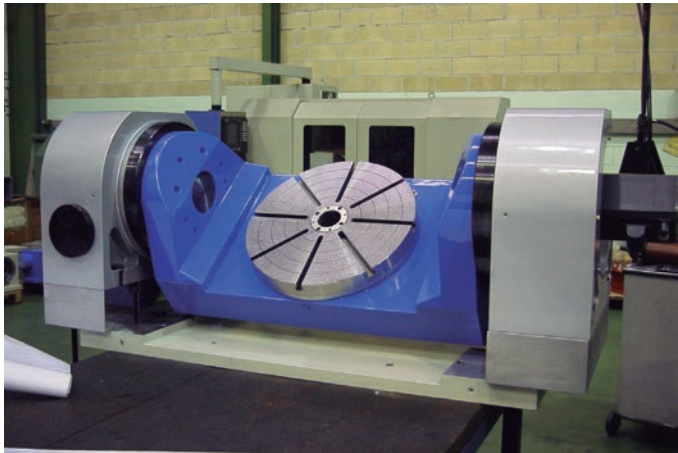
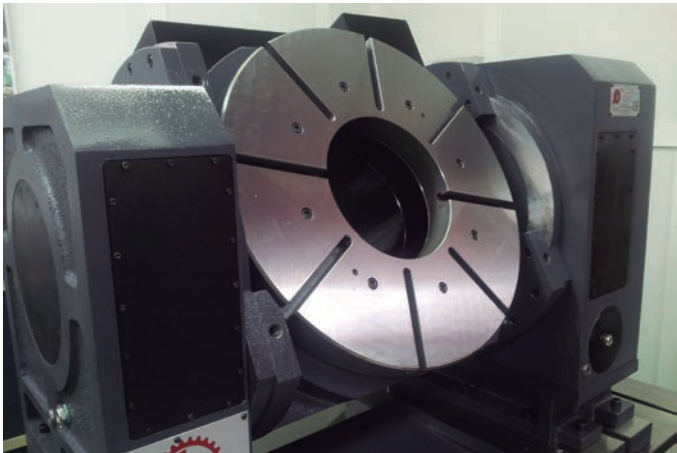
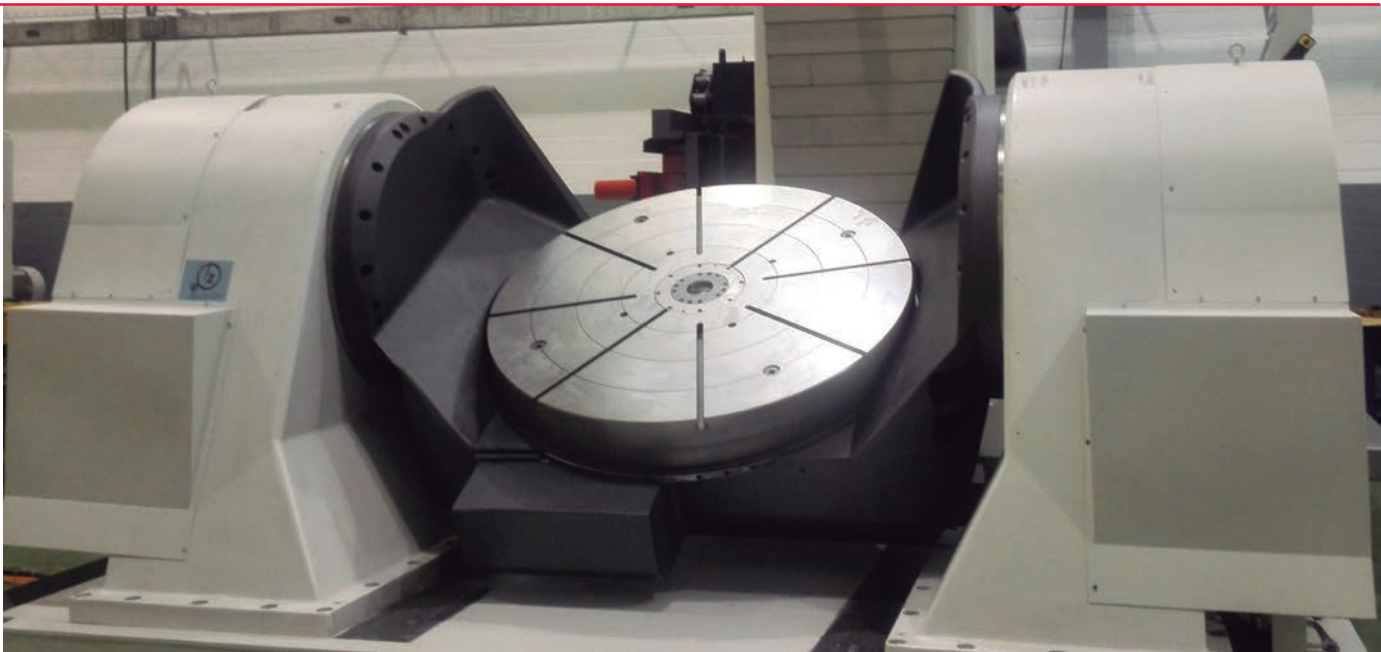
Measurements:



PHT	450	600	800	1000
A	370	510	600	800
B	570	730	850	1060
C	1100	1350	1700	2100
D	660	730	775	875
E	700	900	1100	1600

Characteristics:

	450		600	
	Rotation axis	Tilting axis	Rotation axis	Tilting axis
Table dimension [mm]	Ø600		Ø800	
Load capacity [Kg]	500		750	
Bearing diameter [mm]	Ø250 - Ø330	Ø160 - Ø200	Ø320 - Ø400	Ø250 - Ø330
Turning system	Dual Lead	Dual Lead	Dual Lead	Dual Lead
Rotating speed [rpm]	7	3.6	4.9	3.6
Torque limit during rotary milling [Nm]	3000	1600	6000	3000
Clamping torque [Nm]	4000	4000	5000	8000
Workpiece turning diameter [mm]	Ø700		Ø900	
Tilting angle	360°	90° - 30°	360°	90° - 30°

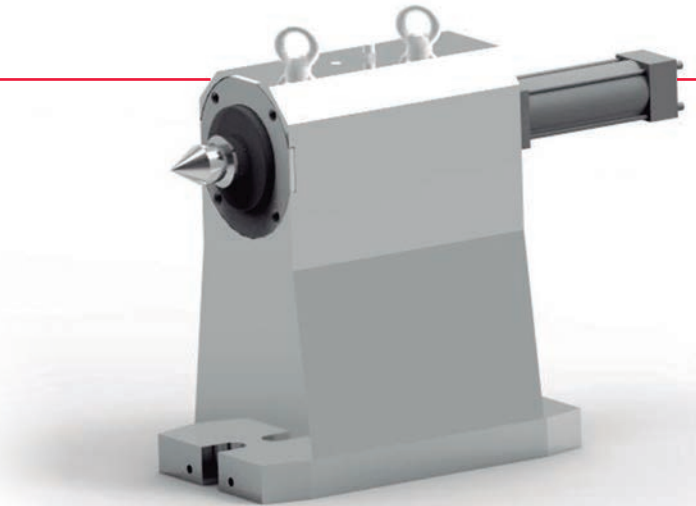


800		1000	
Rotation axis	Tilting axis	Rotation axis	Tilting axis
Ø1000		Ø1200	
1600		3000	
Ø440 - Ø540	Ø320 - Ø400	Ø550 - Ø670	Ø440 - Ø540
Dual Lead	Dual Lead	Dual Lead	Dual Lead
4.9	3.6	4.9	3.6
10000	6000	14000	10000
10000	10000	25000	20000
Ø1100		Ø1600	
360°	90° - 30°	360°	90° - 30°

Tailstock

Different configuration options:

- Fixed or turning quill.
- Manual or automatic quill displacement.
- Thrust force display.



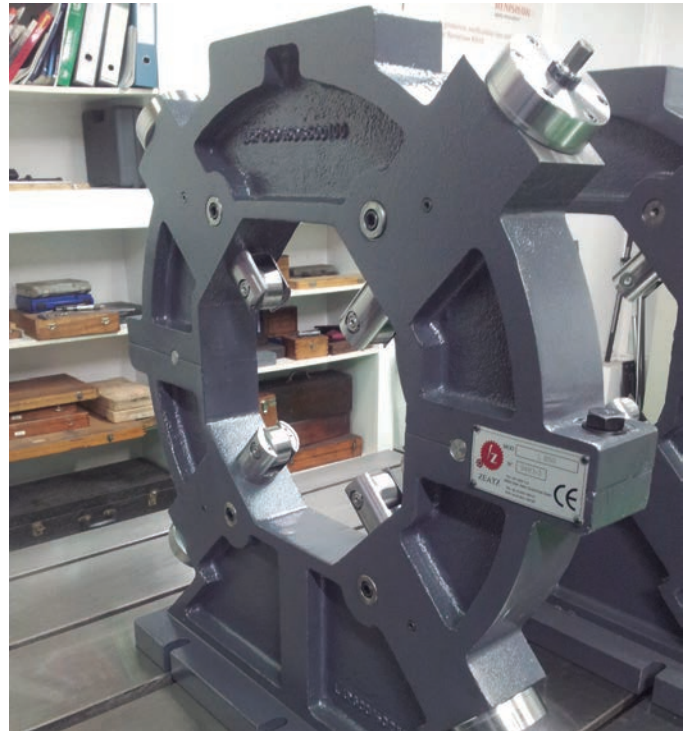
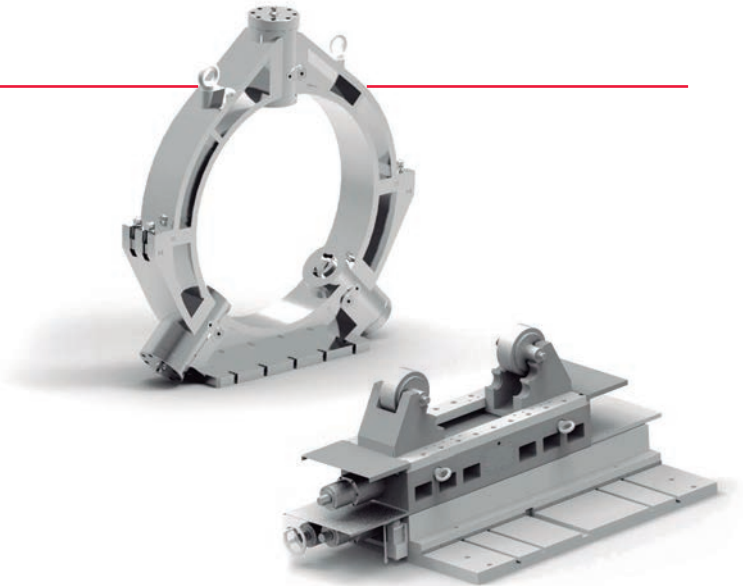
Characteristics:

	320	450	600	800	1000	1200	1500
Load capacity [kg]	400	800	1500	2500	3000	3500	5000
Tailstock quill [mm]	Ø80	Ø80	Ø100	Ø120	Ø140	Ø160	Ø180
Morse taper	4	4	5	5	6	6	6
Quill stroke [mm]	75	75	100	175	200	200	250
Height to the center [mm]	250	325	450	500	650	800	1150

Steady rest

Different configuration options:

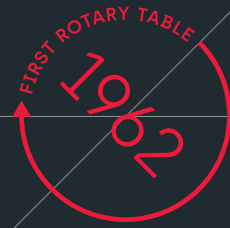
- 2, 3 or 4 points.
- Manual or automatic.



Characteristics:

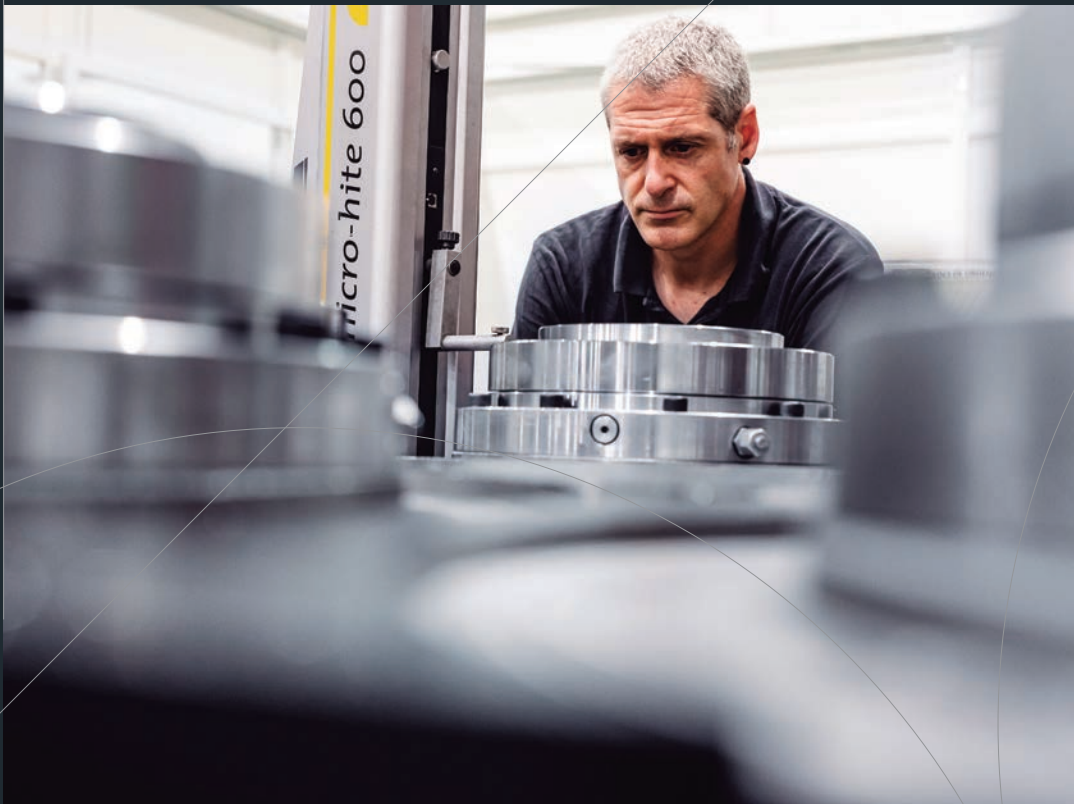
	320	450	600	800	1000	1200	1500
Operating diameter [mm]	Ø100 - Ø200	Ø120 - Ø220	Ø150 - Ø350	Ø250 - Ø450	Ø350 - Ø600	Ø550 - Ø800	Ø800 - Ø1100
Load capacity [Kg]	250	800	1500	2500	3000	3500	5000
Quill diameter [mm]	Ø55	Ø60	Ø60	Ø80	Ø100	Ø120	Ø150
Height to centre [mm]	250	325	450	500	650	800	1150

ZEATZ



ZEATZ

Fitting your projects



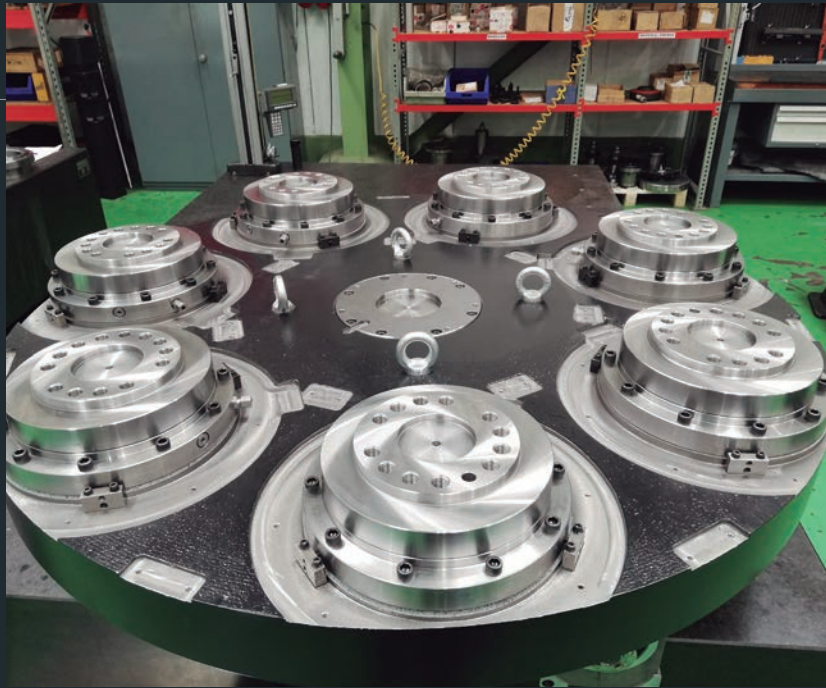
Special
uses

Customised rotary tables design.

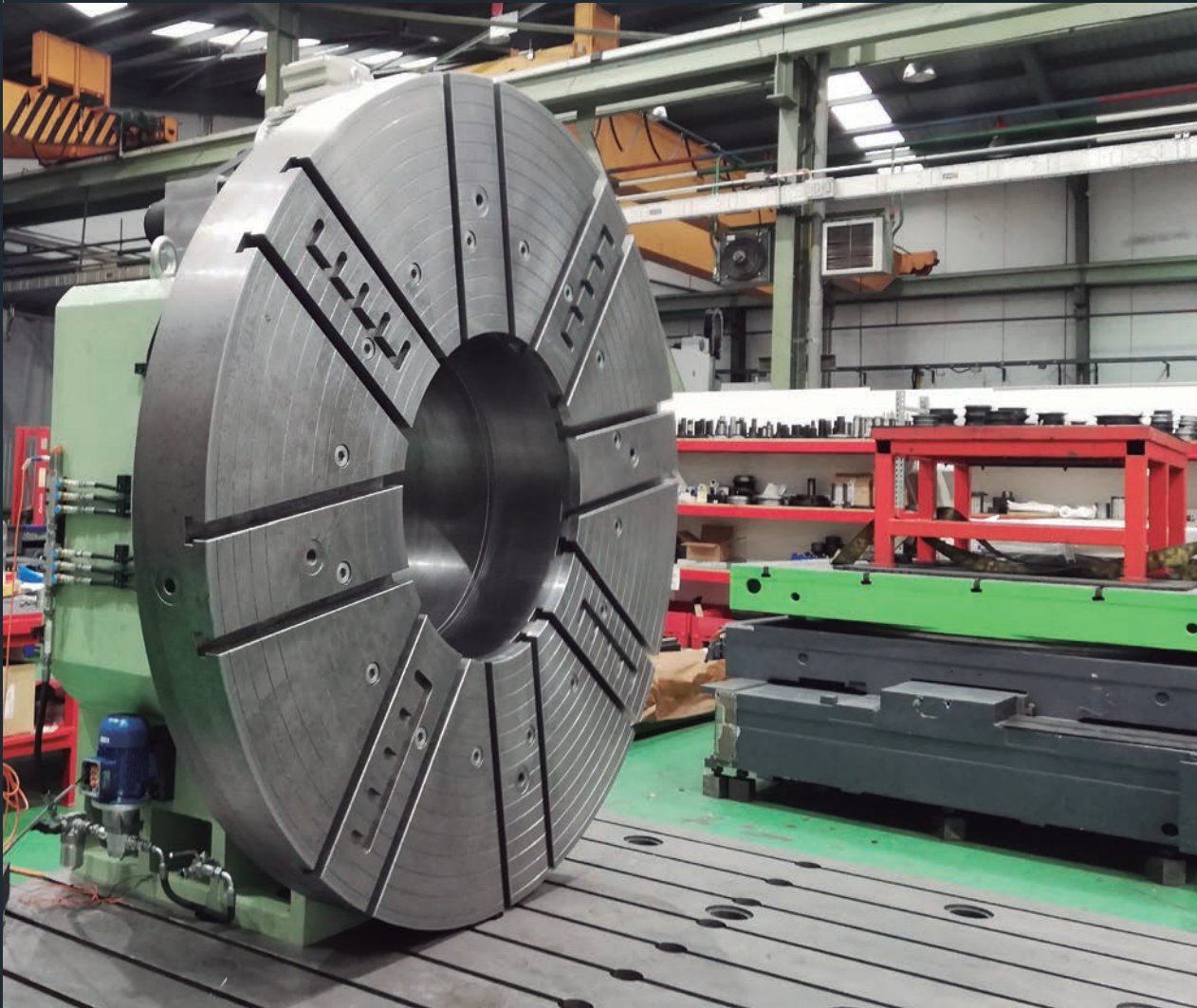
Since the design of the first rotary table 60 years ago, Zeatz designs and manufactures rotary tables for use in special projects:

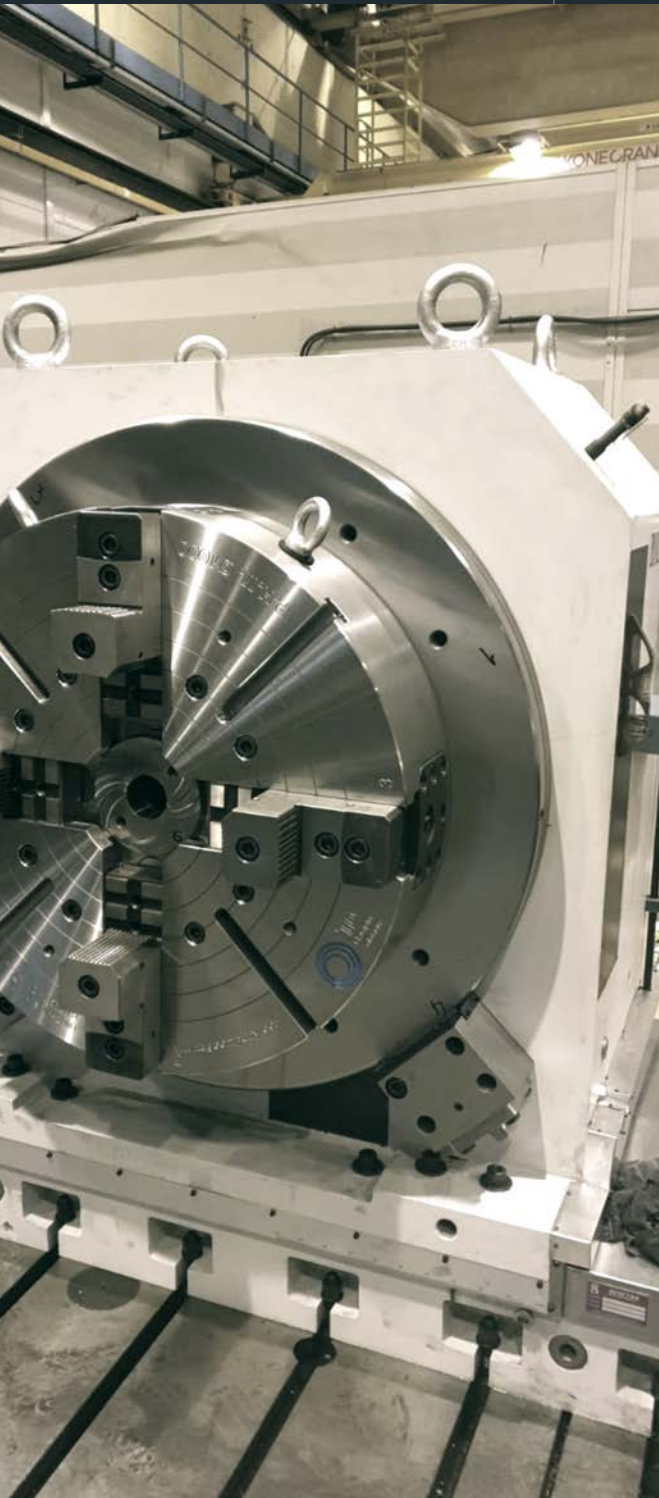
- **Machining of spirals on rotary plates.**
- **Machining of special pieces with large dimensions using customised accessories.**
- **Checking tables with integrated measuring device.**
- **Tables with through hole Ø 1000 mm.**
- **Palletised tables with change stations.**

Special multi-process
rotary table,
7 stations,
diameter 320 mm.



Grinding head Ø2500
with through hole Ø900 mm.





Special uses

PV 1500 60 TN vertical
rotary table with 500 mm
cross stroke.

COMMITTED TO SUSTAINABILITY

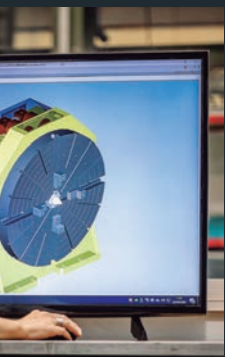
Our premises are in spectacular surroundings. They are set between the mountains, the forest and the Cantabrian Sea. We are aware that industrial activity must be in harmony with care for the environment. That is why we have the ISO-14001 certificate from the company Aquacert, which guarantees that our activity is carried out in a sustainable way.





FIRST ROTARY TABLE
1962





 **ZEATZ**
Fitting your projects



ZEATZ

Pol. Ind. de Itziar Parcela C-2
20829 ITZIAR - DEBA (Gipuzkoa), SPAIN
T+34 943 199 131
E comercial@zeatz.es

www.zeatz.es

