

TSURUMI AVANT SUPPLY RECORDS



Products

PREMIUM GRADE SUBMERSIBLE SEWAGE PUMPS

SERIES MQ

Discharge Bore : 50 - 500 mm

Motor Output : 1.1 - 355 kW

[View Product](#) >



The heart of the **Tsurumi MQ-series** lies in its high-efficiency electric motors, designed to deliver high performances and withstand continuous duty cycles.

- **PREMIUM IE3** efficiency
 - **NEMA Class A**
 - **Class H** insulation for all models in the range.
- S1 duty mode** operation even in water at a temperature of 60° C or above.

Products

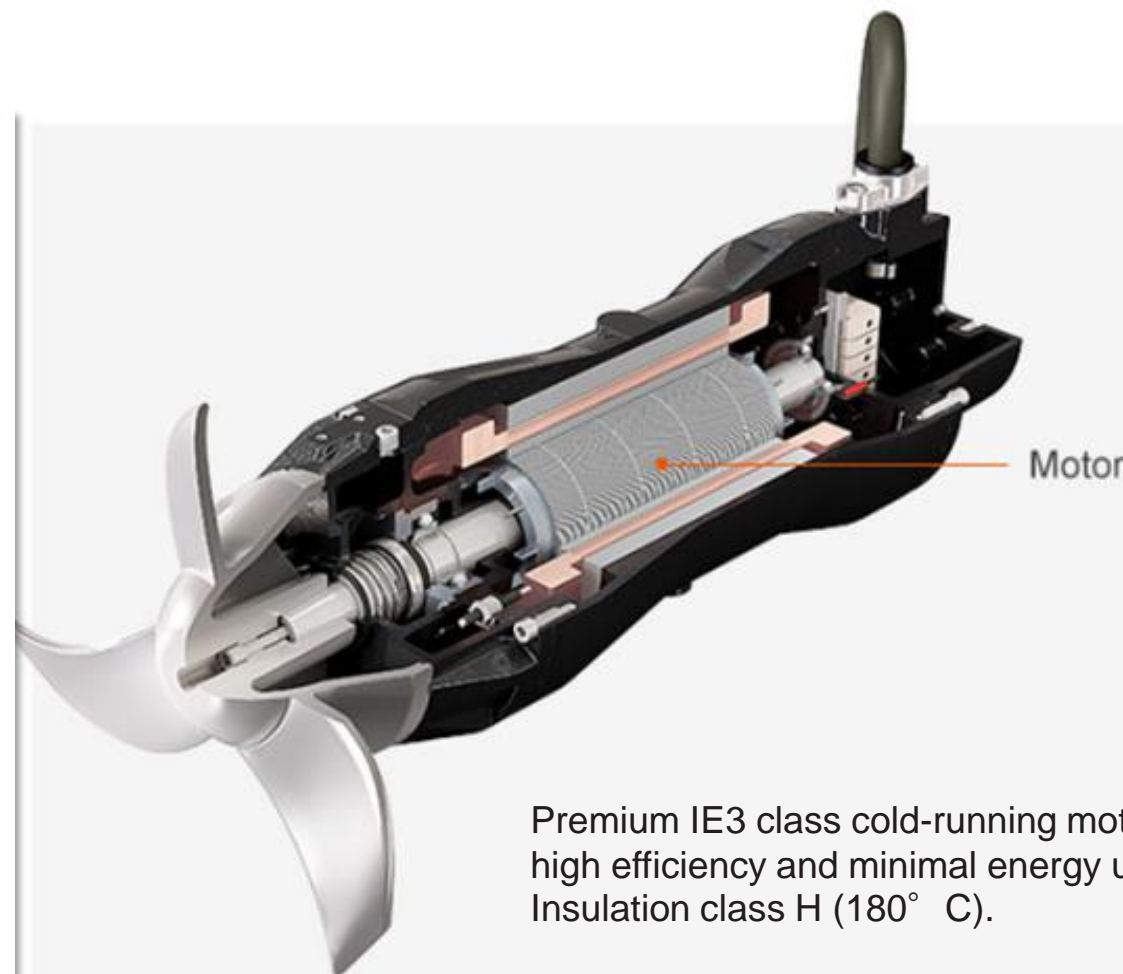


PREMIUM GRADE SUBMERSIBLE MIXERS

SERIES MMR

Propeller : 200 - 650 mm
Motor Output : 0.75 - 7.5 kW

[View Product](#) >



Premium IE3 class cold-running motor for high efficiency and minimal energy use. Insulation class H (180° C).

Products

HIGH GRADE

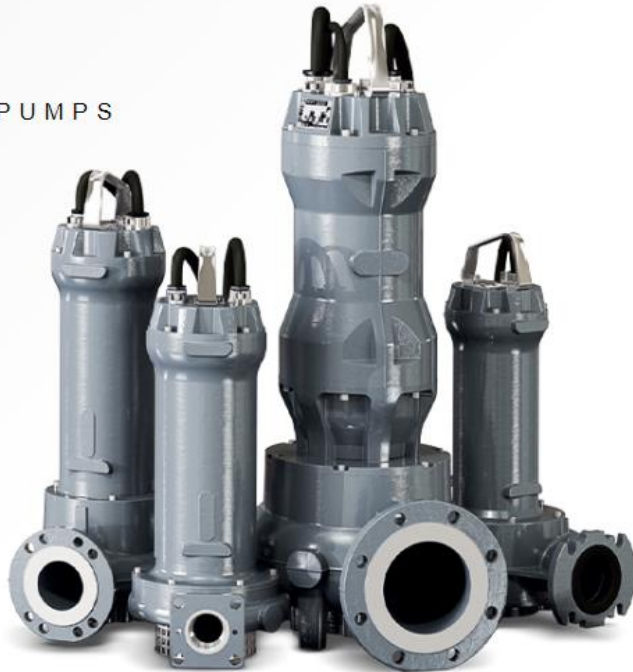
SUBMERSIBLE SEWAGE PUMPS

SERIES MY

Discharge Bore : 40 - 250 mm

Motor Output : 1.5 - 18.5 kW

[View Product](#) >



MULTIPURPOSE

SUBMERSIBLE PUMPS

SERIES MB

Discharge Bore : 1½" · 2" (40 · 50 mm)

Motor Output : 0.37 - 1.5 kW

[View Product](#) >



Wastewater Treatment Facility in Middle East

Model MQB100C

Specification 45kW, 4-pole

Quantity 2 units

In a Sewage Treatment Plant in Abu Dhabi, MQ-series submersible sewage pump equipped with an open channel impeller was installed in a pumping station handling wastewater.

The pumping station required an efficient and reliable solution to handle the increasing wastewater flow. To meet this demand, our team recommended the MQ-series specifically designed for optimal performance in such applications.

The impeller's unique design enabled efficient handling of solids and debris present in the wastewater, minimizing clogging and reducing maintenance requirements and allowed for improved hydraulic efficiency, resulting in increased pumping capacity and energy savings.



Storm Water Drainage System

Model MYB550

Specification 4kW, 4-pole

Quantity 3 units



Tsurumi installed 3 units of MYB550 for a detention tank at an industrial factory on the West Coast of Singapore.

Detention tanks are crucial in managing stormwater runoff during heavy downpours. By capturing and temporarily storing stormwater, the detention tanks significantly reduce peak water discharge from the site. This controlled release at regulated rates enables the drainage system to handle more substantial storms due to climate change uncertainties.



3

Vietnam Project

Model MQB250H

Specification 30kW, 4-pole

Quantity 1 unit

We completed a delivery of a single set of dry version MQB250H 30/4AD submersible sewage pump with a cooling jacket for a Vietnam Project. This pump was chosen to replace a European-made pump that was previously in operation.



The MQ-series pump incorporates an IE3 premium efficiency motor to enhance its overall performance and energy efficiency. With the addition of the cooling jacket, the pump is capable of effectively dissipating heat during operation, ensuring its longevity and reliability in demanding conditions.



4

Sewage Pumping Station in Metro Depot

TSURUMI AVANT

Model MQB300C

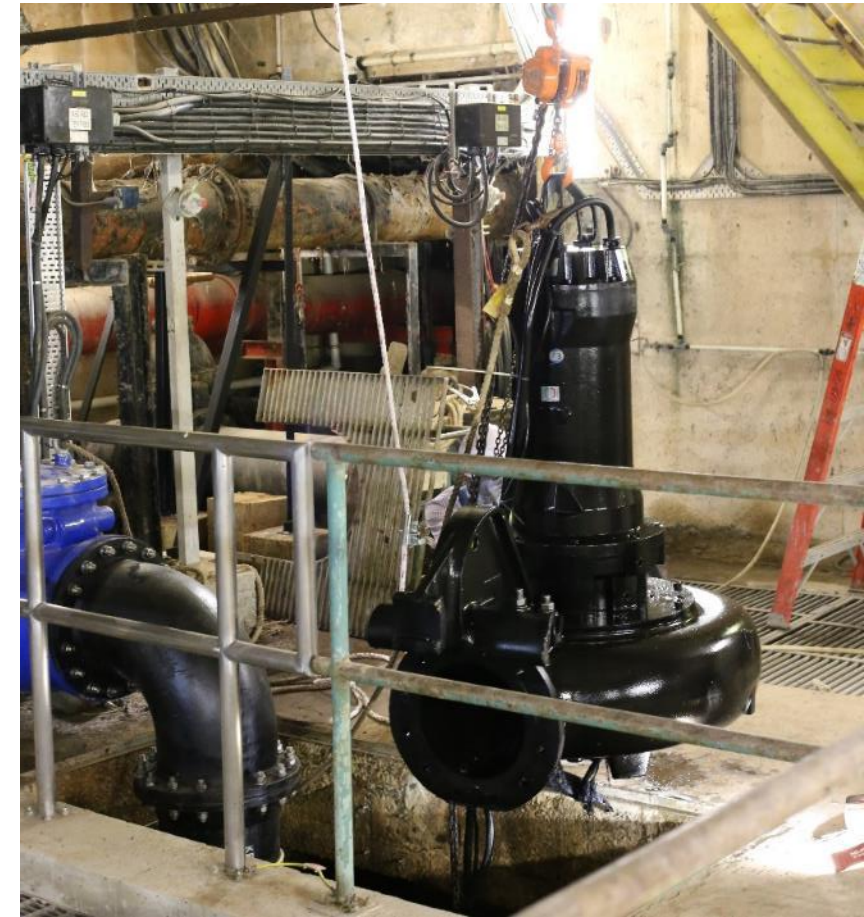
Specification 37kW, 6-pole

Quantity 1 unit



A single unit of the TSURUMI AVANT pump, model MQB 300C 37/6AW 370, has been successfully installed at a sewage pumping station located at a metro depot in Hong Kong.

This installation project involved replacing a pump from a renowned European brand. The pump was chosen for its exceptional performance and reliability, ensuring efficient sewage management in the station.



Replacement Project in Singapore

Model MQC100B

Specification 22kW, 4-pole

Quantity 2 units



In the bustling city of Singapore, Tsurumi took part in a replacement project at Ngee Ann City focused on sewage water transfer.

Two sets of MQC100B 22/4AD 295 dry version pumps were installed in this project to ensure efficient and reliable operations.

The MQ series pumps are equipped with IE3 motors, marking a remarkable leap in overall efficiency and energy savings. This technological advancement ensures that the MQ series pumps not only excel in effectively but also actively contribute to energy conservation and cost reduction, making them an environmentally responsible choice.

Wastewater Drainage Pump for Lake Garden

Model MQB100B
MYB750

Specification 30kW, 4-pole
5.5kW, 2-pole

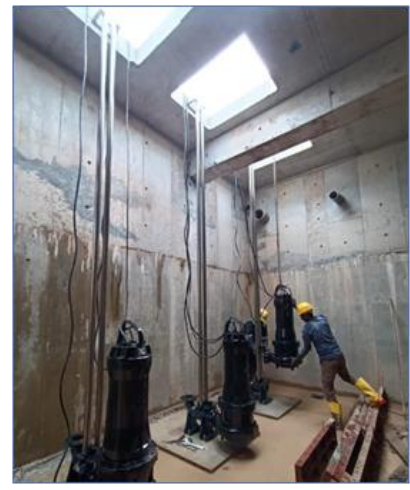
Quantity 3 units
3 units



Tsurumi delivered a total of six pumps from its MQ-series and MY-series to Lake Garden Jurong in Singapore.

With IE3 motors, the MQ series pumps are renowned for their exceptional efficiency and reliability, guaranteeing optimal performance in maintaining the water level of the lake.

The MY series pumps are designed and built with a heavy emphasis on durability and pumping efficiency. These high-quality pumps are more reliable and run more stably than a similar class pumps. These make them ideal for efficient water circulation and filtration in the garden.



Wastewater Treatment Infrastructure

Lebanon, a town in Indiana, USA, is gearing up for substantial growth in the near future. With new expansive commercial and residential projects on the horizon, the MQ-series is poised to play a vital role in facilitating this development by supporting the enhancement and expansion of the town's wastewater treatment infrastructure. By incorporating the reliable and efficient MQ-series pumps into its systems, Lebanon is proactively ensuring the success of its growth plans and establishing a robust foundation for the efficient management of its wastewater needs.



In June 2022, Lebanon Utilities undertook the upgrade of a troublesome duplex lift station, utilizing a pair of MQC-series Chopper pumps. Since their installation, these pumps have delivered flawless performance, ensuring trouble-free operation. Moreover, the incorporation of MQC-series chopper pumps has proven to be a cost-effective decision for Lebanon, as it has led to a reduction in service callouts, saving both time and money.



Replacement Project in Vietnam

Model MMR23NF41

Specification 1.5kW, 4-pole

Quantity 2 units



Tsurumi delivered its MMR-series submersible mixers for a replacement project in Vietnam.

These mixers are equipped with IE3 premium efficiency motors, ensuring optimal energy performance. The MMR-series mixers boast a durable and compact design, featuring a standard EN-GJL-250 cast iron body, an AISI 316 stainless steel propeller, and an AISI 431 stainless steel shaft. To ensure reliable operation, these mixers are equipped with their signature dual inside mechanical seals, which incorporate silicon carbide faces in the oil chamber.

Wastewater Transfer Pump in Industrial Sites

Model MBU75/2/G50V

Specification 0.55kW, 2-pole

Quantity 2 units

In an industrial project in Vietnam, 2 units of compact and reliable MB-series submersible pumps proved to be an ideal solution for efficient wastewater management.

The vortex impeller design effectively handles wastewater with solids and fibrous matters, preventing clogs and reducing maintenance needs. The AISI 431 stainless steel shaft offers excellent resistance to corrosion and wear, guaranteeing a prolonged operational life.

