

# King Edward Hotel

TORONTO,  
CANADA.

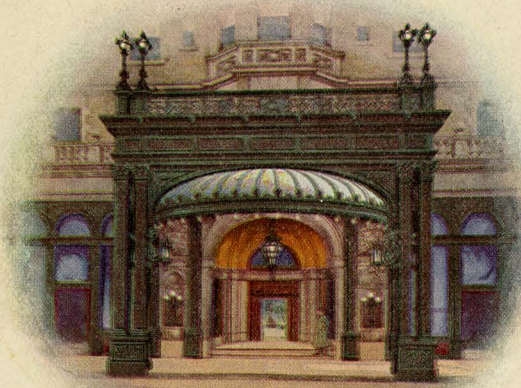


ABSOLUTELY  
FIRE PROOF



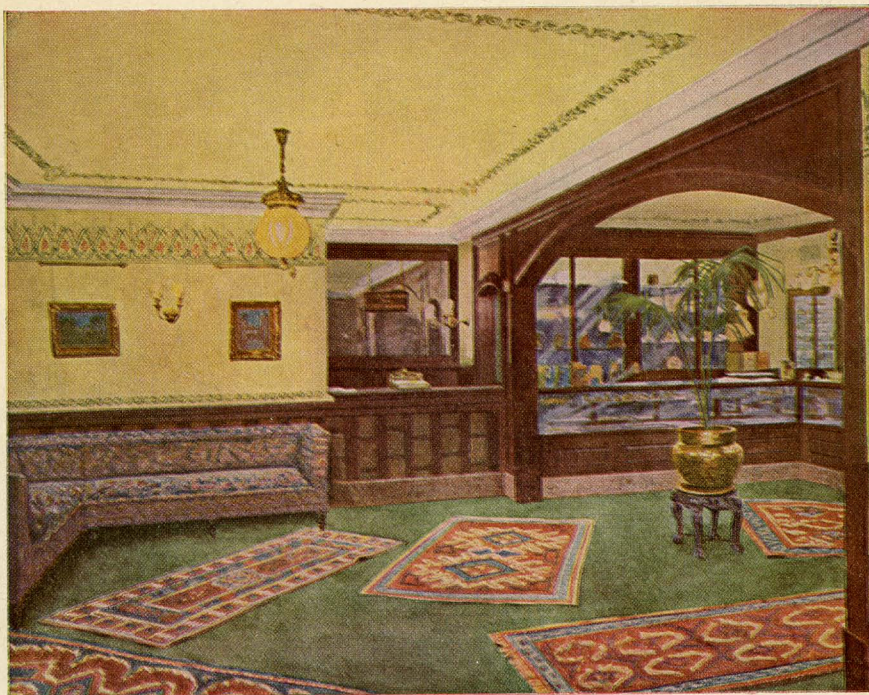


*The King Edward  
Hotel*



*Toronto, Canada.*





LADIES' BOOKING ROOM

## King Edward Hotel

Toronto, Canada

An absolutely fireproof hotel with 400 rooms, 300 with baths. Long distance telephone in each room. Luxuriously furnished rooms on the upper floors overlooking the Bay and Lake Ontario.

The centre of Ontario's famous tourist district. Five minutes from railway, three minutes from boats. One of the finest equipped hotels in the world.

### Special to the Ladies

This Hotel maintains on the main office floor a Ladies' Department, where ladies travelling alone may register and have their rooms allotted, receive mail, telegrams, telephone calls and cards, and where they may receive callers. In connection with this department there is also an elevator connecting with all floors, parlors and dining rooms.

This department does away with the necessity of ladies having to cross the rotunda to the main office.

### Special Features

Afternoon Tea served on the parlor floor every afternoon from 4.00 to 5.30.  
Light refreshments served in the Palm Room from 10 a.m. to 11 p.m.





THE KING EDWARD HOTEL



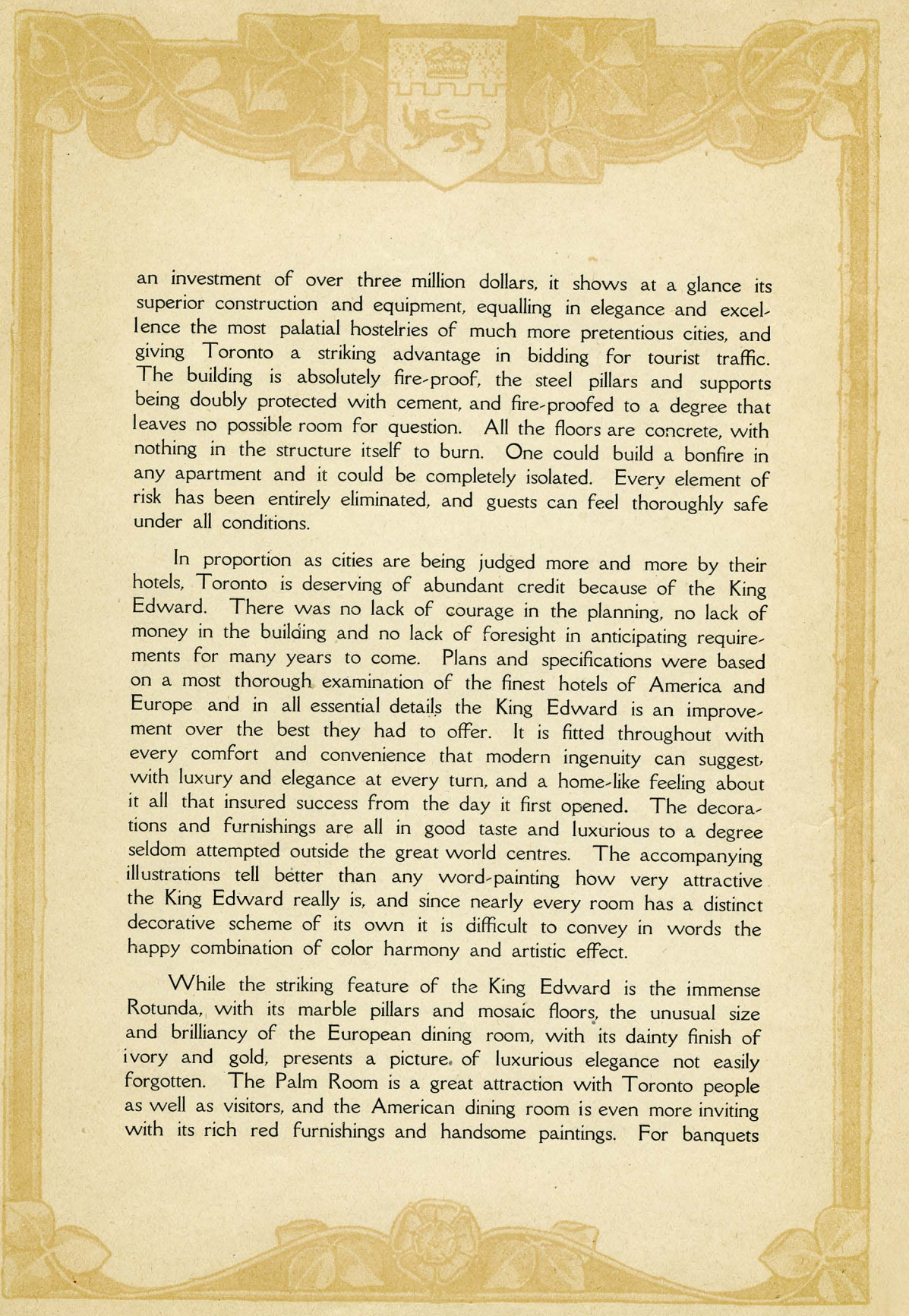


# Greeting

In submitting this illustrated guest book we hope to encourage an agreeable impression of Toronto as a city, and of the new KING EDWARD HOTEL as an attractive resort for visitors and tourists at all seasons of the year. Very little attempt has been made to go into details, the intention being to let the actual photos do their talking. The old notion that Canada was "slow" or uninteresting has been effectually sidetracked, and if for no other reason than that of plain business there should be a larger intelligence regarding conditions on this side. The precise fact we have to deal with is that this country is growing with wonderful rapidity, and is at the beginning of big development. Opportunities are cropping up on all sides with startling rapidity and fabulous promise, and while there may not be the air and dash of London or New York in the Toronto of to-day it will surprise some people how very metropolitan it is. Strangers who come to Toronto, whether from Europe or the United States, are surprised beyond measure at the general evidence of prosperity, with the homes for the most part unusually attractive, and with larger average intelligence and better average living than any other city of its size in the world.

Nor is this in any sense exaggerated. Looking at things from a plain everyday business standpoint, Toronto represents very decided opportunities, and is well worth a visit from Europeans and Americans who appreciate the spirit of enterprise and progress. And in order that there may be no misgiving as to the sort of reception awaiting them we point with pardonable pride to the new King Edward Hotel, which ranks among the finest on the continent and is a distinct advance over anything previously attempted in Canada. Representing



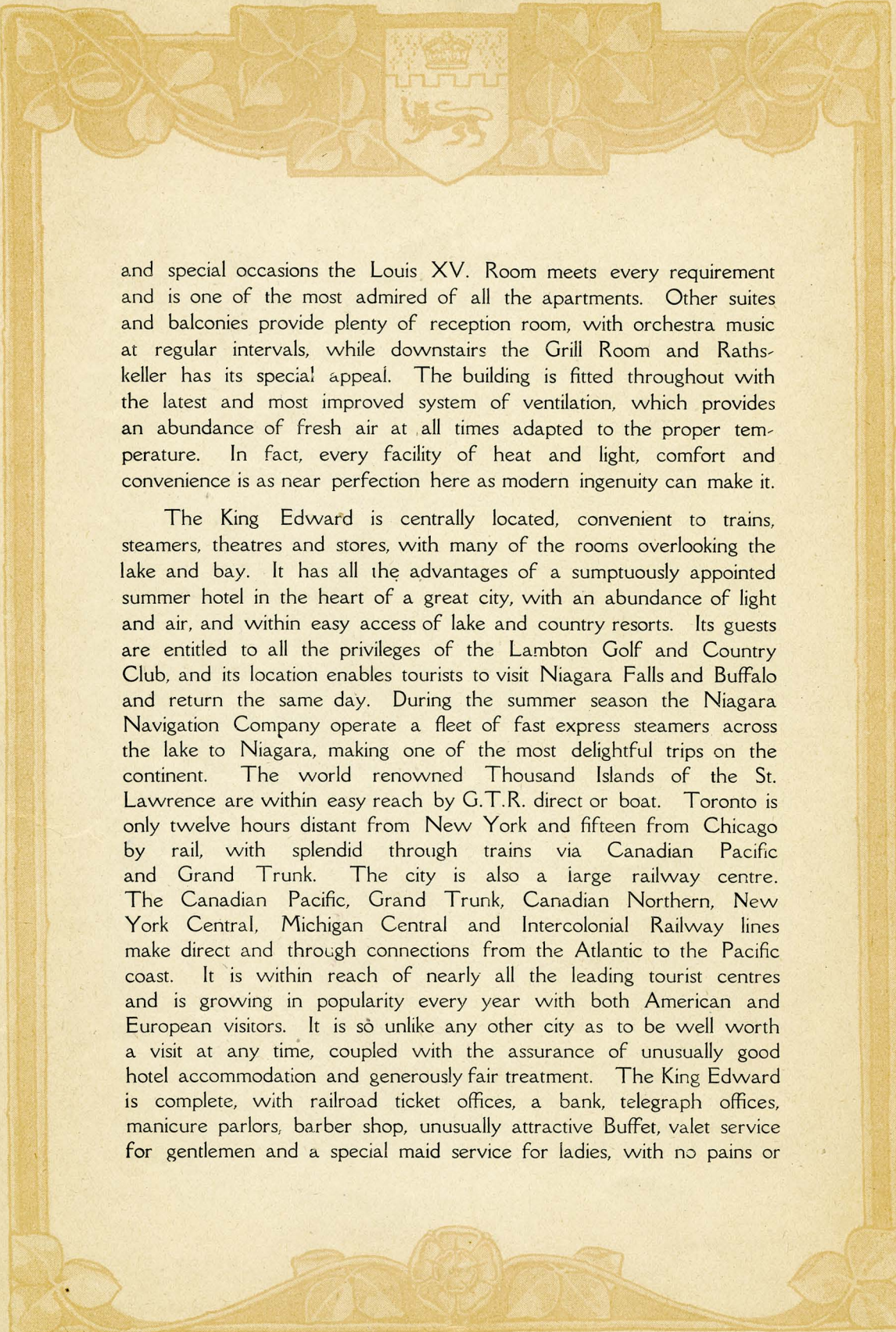
A decorative border in a light tan color frames the page. At the top center is a heraldic crest featuring a crown above a shield with a lion passant guardant. The shield is flanked by stylized floral and leaf motifs that extend to the corners. The bottom of the border also features similar floral and leaf designs.

an investment of over three million dollars, it shows at a glance its superior construction and equipment, equalling in elegance and excellence the most palatial hostelries of much more pretentious cities, and giving Toronto a striking advantage in bidding for tourist traffic. The building is absolutely fire-proof, the steel pillars and supports being doubly protected with cement, and fire-proofed to a degree that leaves no possible room for question. All the floors are concrete, with nothing in the structure itself to burn. One could build a bonfire in any apartment and it could be completely isolated. Every element of risk has been entirely eliminated, and guests can feel thoroughly safe under all conditions.

In proportion as cities are being judged more and more by their hotels, Toronto is deserving of abundant credit because of the King Edward. There was no lack of courage in the planning, no lack of money in the building and no lack of foresight in anticipating requirements for many years to come. Plans and specifications were based on a most thorough examination of the finest hotels of America and Europe and in all essential details the King Edward is an improvement over the best they had to offer. It is fitted throughout with every comfort and convenience that modern ingenuity can suggest, with luxury and elegance at every turn, and a home-like feeling about it all that insured success from the day it first opened. The decorations and furnishings are all in good taste and luxurious to a degree seldom attempted outside the great world centres. The accompanying illustrations tell better than any word-painting how very attractive the King Edward really is, and since nearly every room has a distinct decorative scheme of its own it is difficult to convey in words the happy combination of color harmony and artistic effect.

While the striking feature of the King Edward is the immense Rotunda, with its marble pillars and mosaic floors, the unusual size and brilliancy of the European dining room, with its dainty finish of ivory and gold, presents a picture of luxurious elegance not easily forgotten. The Palm Room is a great attraction with Toronto people as well as visitors, and the American dining room is even more inviting with its rich red furnishings and handsome paintings. For banquets



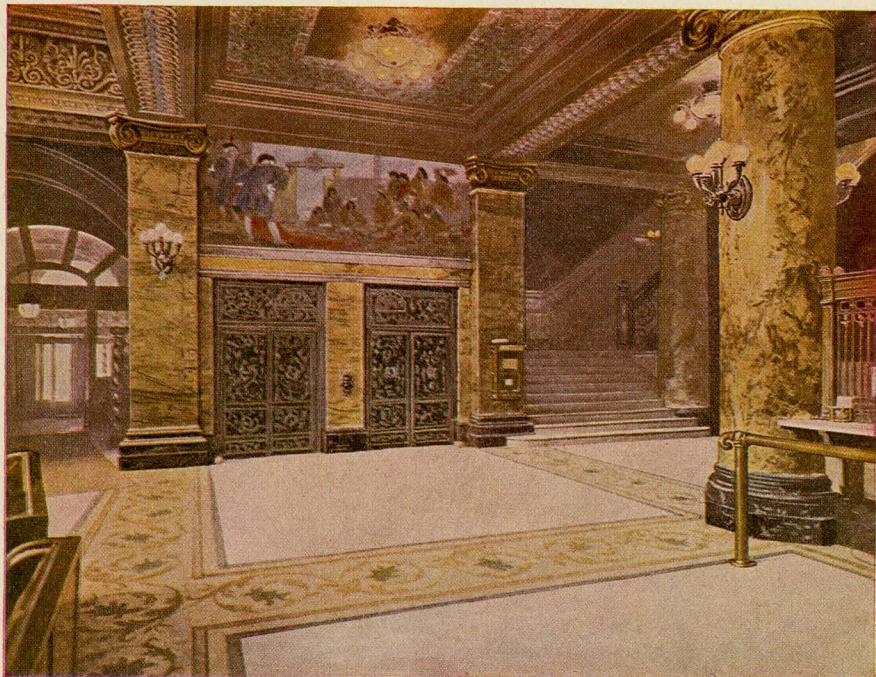
A decorative border in a golden-yellow hue frames the page. At the top center, there is a heraldic crest featuring a crown above a shield with a lion passant guardant. The shield is flanked by stylized floral and leaf motifs that extend across the top and down the sides of the page. The bottom of the border also features similar floral designs.

and special occasions the Louis XV. Room meets every requirement and is one of the most admired of all the apartments. Other suites and balconies provide plenty of reception room, with orchestra music at regular intervals, while downstairs the Grill Room and Rathskeller has its special appeal. The building is fitted throughout with the latest and most improved system of ventilation, which provides an abundance of fresh air at all times adapted to the proper temperature. In fact, every facility of heat and light, comfort and convenience is as near perfection here as modern ingenuity can make it.

The King Edward is centrally located, convenient to trains, steamers, theatres and stores, with many of the rooms overlooking the lake and bay. It has all the advantages of a sumptuously appointed summer hotel in the heart of a great city, with an abundance of light and air, and within easy access of lake and country resorts. Its guests are entitled to all the privileges of the Lambton Golf and Country Club, and its location enables tourists to visit Niagara Falls and Buffalo and return the same day. During the summer season the Niagara Navigation Company operate a fleet of fast express steamers across the lake to Niagara, making one of the most delightful trips on the continent. The world renowned Thousand Islands of the St. Lawrence are within easy reach by G.T.R. direct or boat. Toronto is only twelve hours distant from New York and fifteen from Chicago by rail, with splendid through trains via Canadian Pacific and Grand Trunk. The city is also a large railway centre. The Canadian Pacific, Grand Trunk, Canadian Northern, New York Central, Michigan Central and Intercolonial Railway lines make direct and through connections from the Atlantic to the Pacific coast. It is within reach of nearly all the leading tourist centres and is growing in popularity every year with both American and European visitors. It is so unlike any other city as to be well worth a visit at any time, coupled with the assurance of unusually good hotel accommodation and generously fair treatment. The King Edward is complete, with railroad ticket offices, a bank, telegraph offices, manicure parlors, barber shop, unusually attractive Buffet, valet service for gentlemen and a special maid service for ladies, with no pains or



KING EDWARD HOTEL



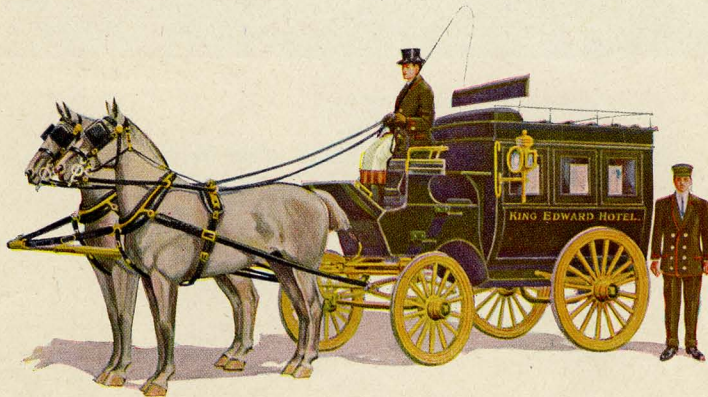
MAIN ENTRANCE, ELEVATORS AND MAIN STAIRWAY



expense spared to insure every possible comfort and consideration to the traveling public. It is strikingly unique in all its appointments and provides both European and American plans at prices so distinctly reasonable as to put the best to be had in service and cuisine within easy reach of modest means.

The special Busses provided by the King Edward to meet trains and steamers are modelled on the plan of the Paris Opera Busses, and represent a standard of excellence in keeping with the hotel itself. These Busses meet all trains coming in and going out of Toronto. Another feature deserving of particular mention is the Drug Store in the building, in direct telephone connection with every room, and immediately available at all hours. In every essential detail the King Edward is home-like and cheerful, with a generous spirit of service actuating the entire organization from the management down. No pains or expense have been spared to insure the guests the fullest measure of comfort and satisfaction, and the manager hopes for such thorough appreciation as will bring visitors back again along with their friends.

WILLIAM C. BAILEY,  
Managing Director.



A King Edward Bus



KING EDWARD HOTEL



ONE VIEW OF EXHIBITION GROUNDS



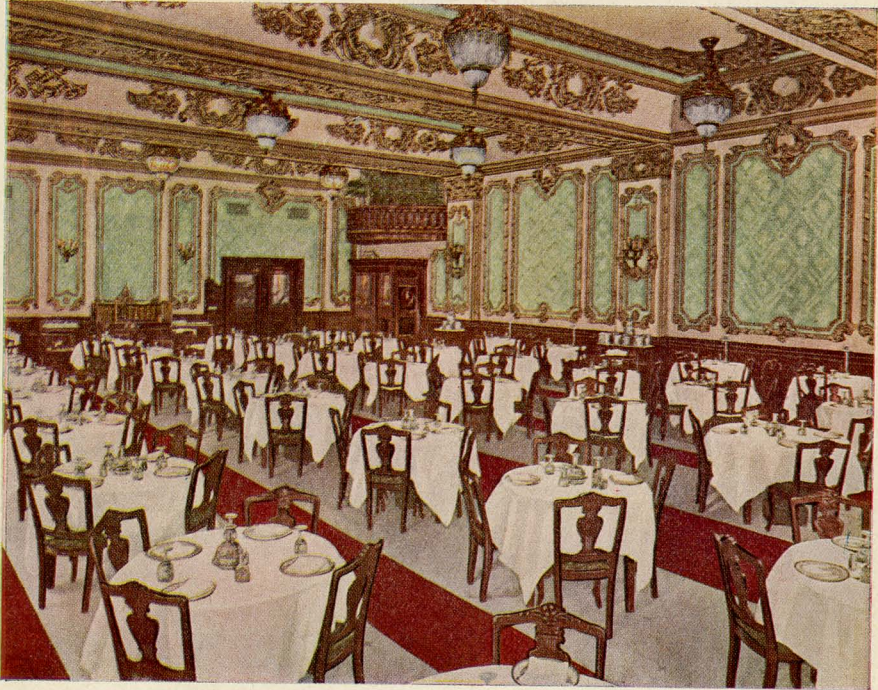
KING EDWARD HOTEL



TORONTO BAY



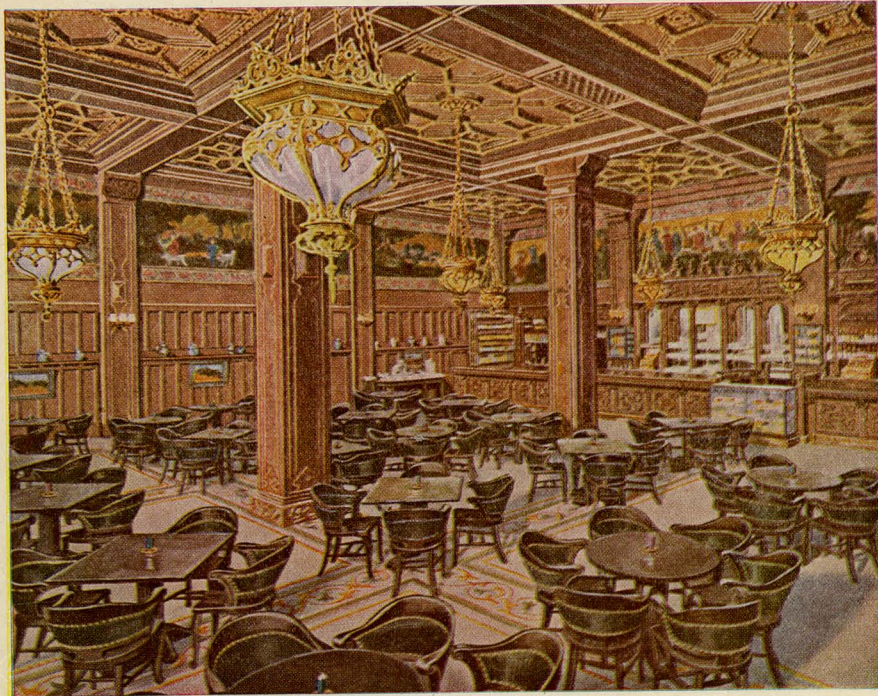
KING EDWARD HOTEL



THE MAIN RESTAURANT



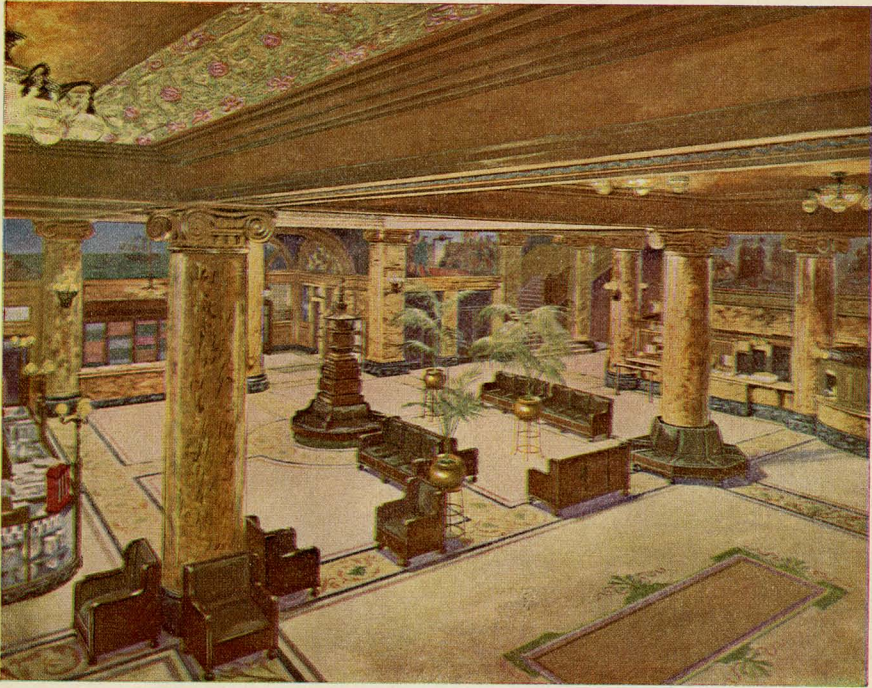
KING EDWARD HOTEL



THE BUFFET



KING EDWARD HOTEL



ONE VIEW OF ROTUNDA



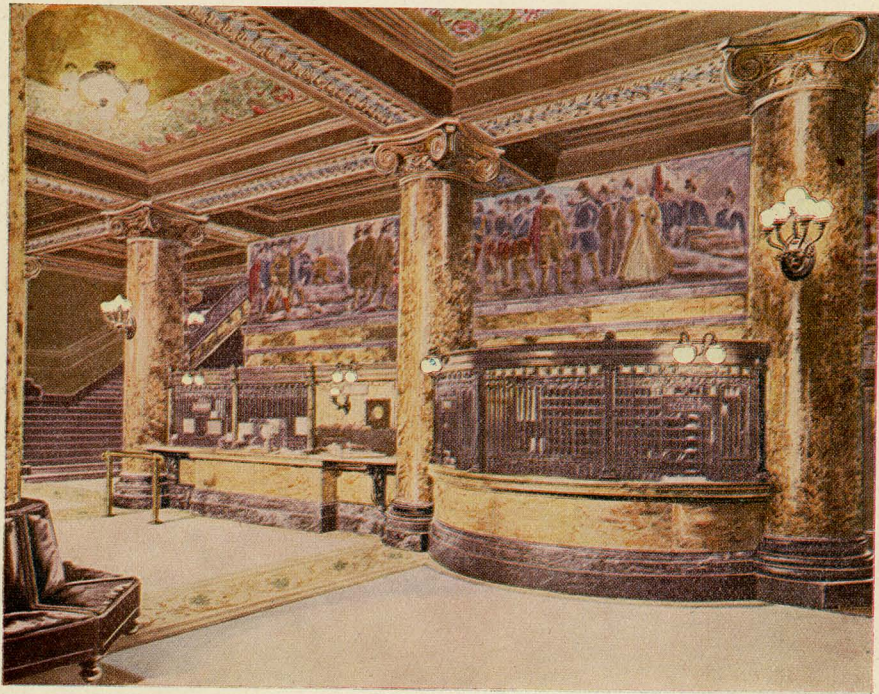
KING HOTEL  
EDWARD



GLIMPSE OF ROTUNDA



KING EDWARD HOTEL



MAIN OFFICE



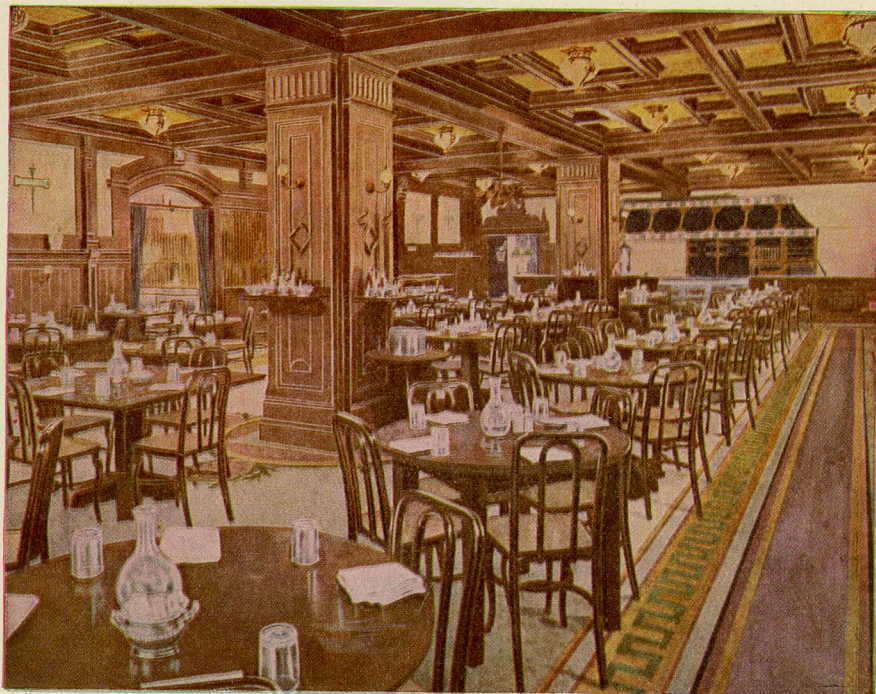
KING EDWARD HOTEL



NEWS STAND



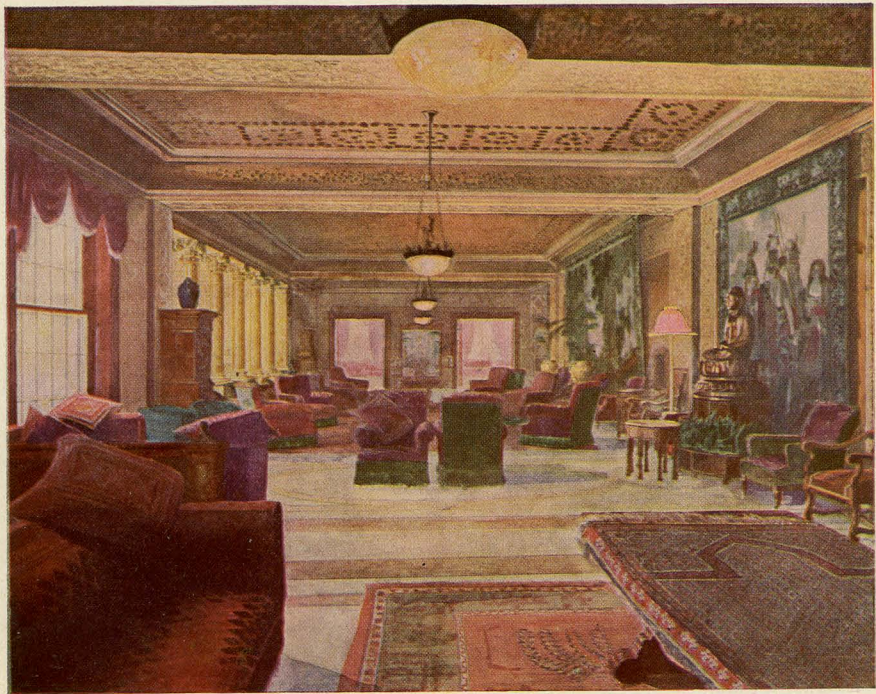
KING EDWARD HOTEL



THE GRILL ROOM



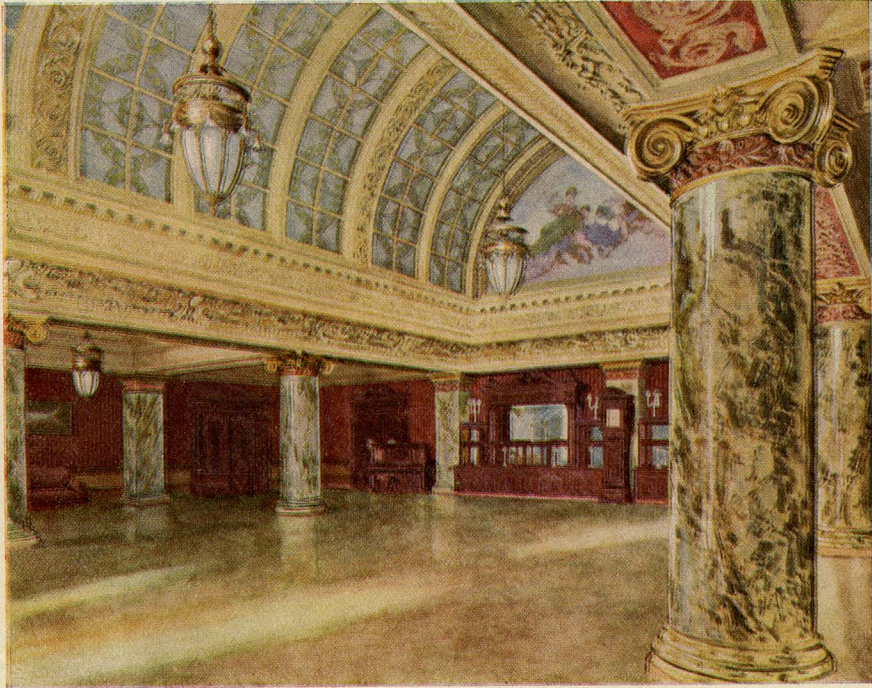
KING EDWARD HOTEL



LOUNGE FLOOR



KING EDWARD HOTEL



THE GRAND BALL ROOM



KING EDWARD HOTEL



DRAWING ROOM, LOUNGE FLOOR



