

Front Speaker Pod Install Instructions

1. GXL – Card Removal

Remove the screw from the centre of the door latch handle. Push the whole latch towards the front of the vehicle to release it from the door frame. Lift the front of the window switch housing and unplug the harness from the switch. Slip a butter knife in the side of the screw covers in the armrest to pop them out and remove the 2x screws from each armrest. The covers have arrows on the back of them to show which way is up.



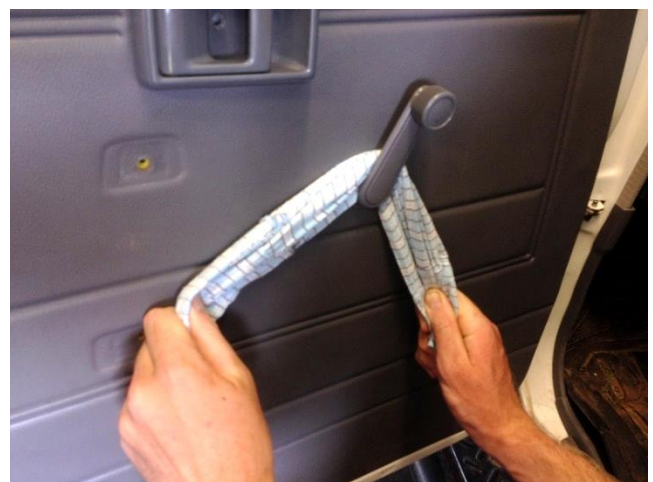
2. WORKMATE & GX – Latches & Screws

Remove the screws from the centre of the door latch handle. Push the whole latch towards the front of the vehicle to release it from the door frame. Use a butter knife to remove the screw covers and then remove the 2 handle mounting screws.



3. WORKMATE & GX – Card Removal

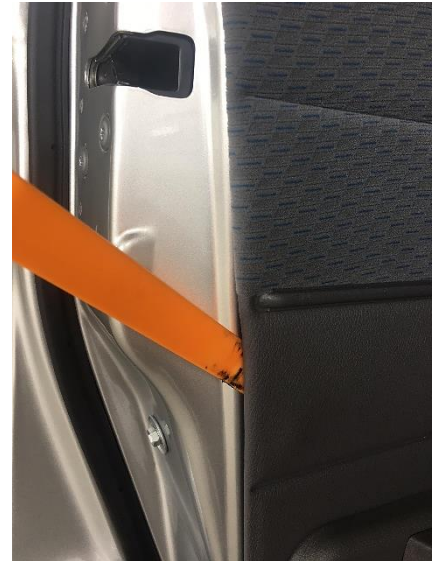
Slip a rag between the window winder and the clear plastic washer while the handle is facing up. Pull the rag from side to side; the rag will grab the end of the circlip and it will pop off the handle. Push the circlip back into the handle; this way the winder can be pushed back into the spline upon door re-assembly.



4. REMOVAL OF DOOR CARD

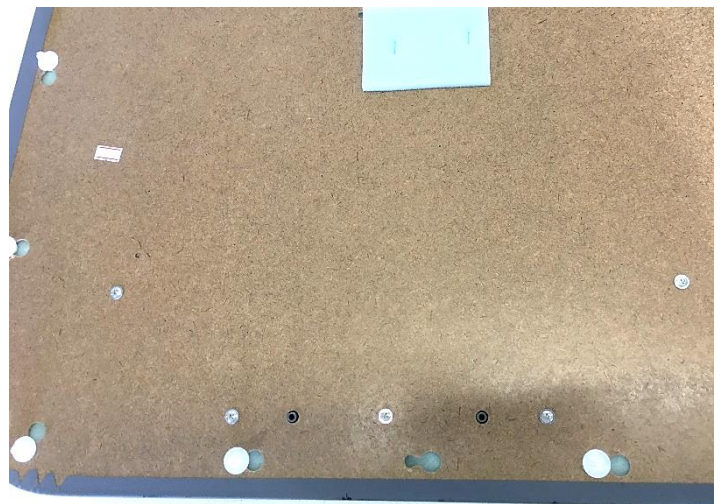
Using a door trim removal tool to slide between the door card and the door frame. Lever the door card off of the frame with the tool, keep the tool close to the trim clips and be careful not to tear the clips from the card. Once the door card is freed, you can rotate it so the door latch handle can be removed through its own hole without disconnecting the rod.

- TIP – another common tool to use is a butter knife wrapped in tape.



5. GXL MAP POCKET REMOVAL

Remove the 5 screws holding the map pocket to the card of the door and discard the screws.



6. MAP POCKET ATTACHMENT

Using 5 of the new screws supplied, attach the factory Toyota map pockets to the new speaker pods. The 2 large dowel holes will help locate the screw holes; make sure that the screws are not over tightened.



7. FITTING PODS

Fit all of the supplied plastic pins to the screw bosses on the back of the pod. Coat the tips of the pins with a whiteboard marker; this marker will transfer to the door card once the pod is in its correct position and pressed firmly against the door card.



8. POD POSITION

Dual Cab/Wagon –
15 mm from the front of the card
20 mm from the bottom of the card

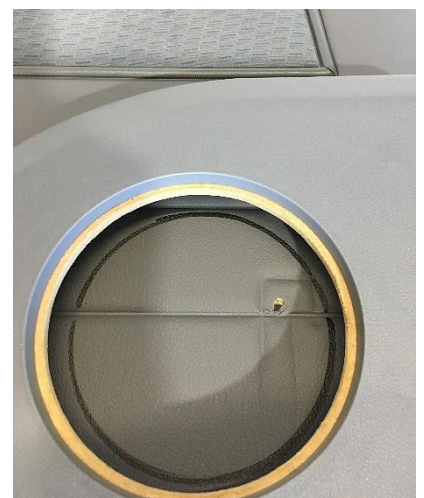
Single Cab –
15 mm from the front of the card
11 mm from the bottom of the card

- TIP – you may wish to remove some of the trim clips from the back of the door cards to help the card lay flat while you press on the pod to transfer the white board marker (pod location).



9. MARKING SPEAKER HOLE

While the pod is in place; trace around the inside of the speaker cut out.



10. DOOR CARD DRILLING

Drill through the transferred white board dots with a 1/8" or a 3.5 mm drill bit.



11. SPEAKER HOLE

Cut out the speaker hole with a jigsaw.

- TIP – you can place masking tape on the bottom of the jigsaw deck to protect the door card vinyl.



12. POD FITTING

Remove the locator pins from the speaker pods and attach the pods to the cards with the supplied screws. Do NOT over tighten the screws, but make sure the pod is pulled up firmly against the card.



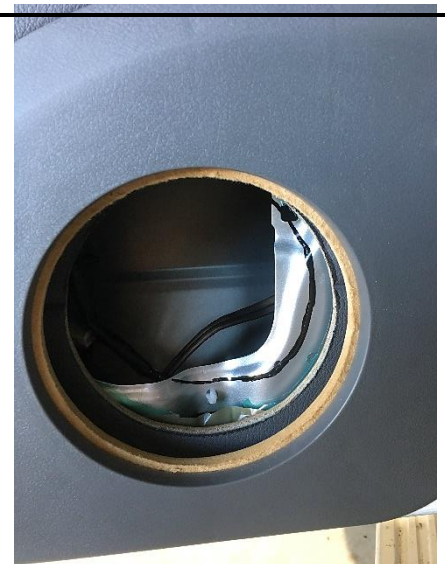
13. WIRE ROUTING

If your vehicle has this harness you can unclip it from the door frame and re-route it out of the way, to clear this away from the speakers.



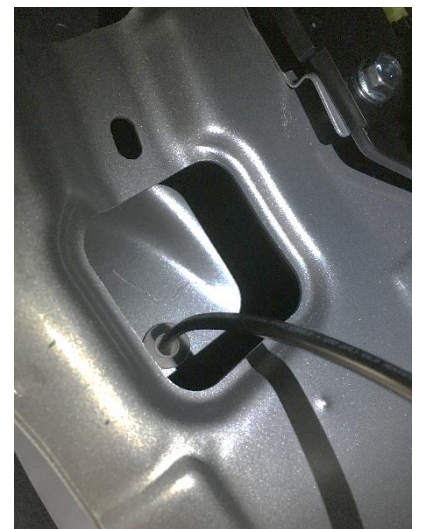
14. DOOR FRAME CLEARANCE

Hold the door card up to the frame and mark the metal. Remove any metal that will interfere with the speaker magnet; this will vary depending on the speaker size. On the single cabs many speakers will require no cutting of the frame as you can easily bend the excess metal out of the way with a pair of small vice grips or hammer.



15. SPEAKER WIRING

On the GX and Workmate models, you can remove the kick panel and drill the hole for a grommet through this cavity for the speaker wiring (see photo for reference). On the GXL models you will be able to follow the factory harness.



16. SPEAKER WIRING

On the GX and Workmate, you can run the speaker wires out of the new grommet and into the factory hole behind the hinge on the bottom of the door. By routing the cable on the opposite side of the hinge, it will prevent the cable from being pinched in the door jam.



17. INSTALLING CARDS

Clip the door card back onto the door frame and mark the speaker holes onto the pod. Drill the pilot holes with a 1/8 or 3.5 mm drill bit. Hold the backing plate in place while drilling being careful not to drill your hand.



18. RE-ASSEMBLY

Connect your speaker wiring and install speakers. Reassemble the door latch, armrest and window switch harness. Make sure all the door trim clips are fully engaged with the door frame.

Once finished sit back and enjoy your new sound system, don't forget to check out some of our other great products!

