

Rear Speaker Pod Install Instructions

1. REMOVAL OF DOOR CARD

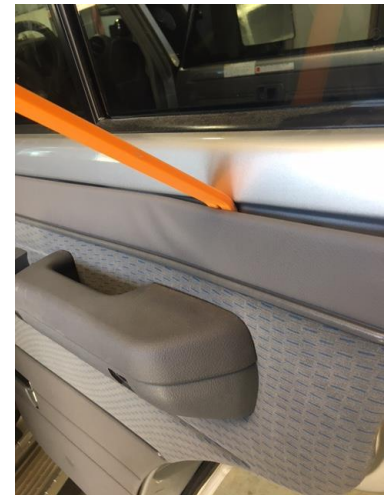
Remove the screw from the centre of the door latch handle. Push the whole latch towards the front of the vehicle to release it from the door frame. Lift the front of the window switch housing and unplug the harness from the switch, slip a butter knife in the side of the screw covers in the armrest to pop them out and remove the 2x screws from each armrest. The covers have arrows on the back of them to show which way is up.



2. REMOVAL OF DOOR CARD

Using a door trim removal tool; slide tool between the door card and the door frame. Lever the door card off the frame, keeping the tool close to the trim clips and be careful not to tear the clips from the card. Once the door card is freed, you can rotate it so the door latch handle can be removed through its own hole without disconnecting the rod.

- TIP – another common tool to use is a butter knife wrapped in tape.



3. ASH TRAY REMOVAL

Peel back the 4 tabs of the ash tray to remove.



4. FITTING PODS

Fit all the supplied plastic pins to the screw bosses on the back of the pod. Coat the tips of the pins with a whiteboard marker; this marker will transfer to the door card once the pod is in its correct position and pressed firmly against the door card.



5. POD POSITION

Dual Cab/Wagon –

11 mm from the front of the card

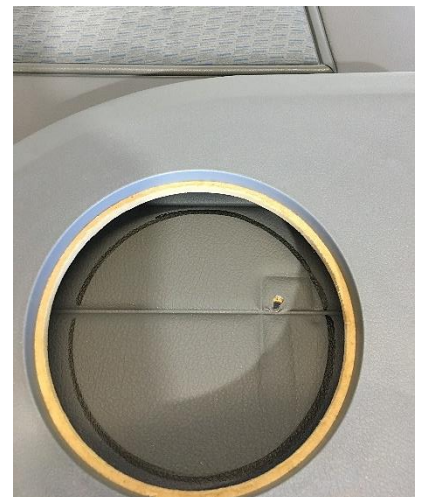
21 mm from the bottom of the card

- TIP – you may wish to remove some of the trim clips from the back of the door cards to help the card to lay flat while you press on the pod to transfer the whiteboard marker (pod location).



6. MARKING SPEAKER HOLE

While the pod is in place; mark the hole for the back of the speaker to clear through.



7. DOOR CARD DRILLING

Drill through the transferred whiteboard dots with a 1/8 or a 3.5 mm drill bit.



8. SPEAKER HOLE

Cut out the speaker hole with a jigsaw.

- TIP – you can place masking tape on the bottom of the jigsaw deck to protect the door card vinyl.



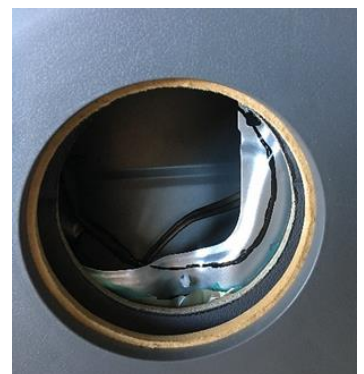
9. POD FITTING

Remove the locator pins from the speaker pods and attach the pods to the cards with the supplied screws; do not over tighten the screws but make sure the pod is pulled up firmly against the card.



10. DOOR FRAME CLEARANCE

Hold the door card up to the frame and mark the metal. Remove any metal that will interfere with the speaker magnet; this will vary depending on the speaker size.



11. SPEAKER WIRING

Where the harness for the electric windows goes from the door frame to the cab, it is easier to access the rubber gromets with the back door closed and the front door open for wiring to be run.



12. INSTALLING CARDS

Clip the door card back onto the door frame and mark the speaker holes onto into the pod. Drill the pilot holes with a 1/8- or 3.5-mm drill bit, hold the backing plate in place while drilling being careful not to drill your hand.



13. RE-ASSEMBLY

Connect your speaker wiring and install speakers. Reassemble the door latch armrest and window switch harness; make sure all the door trim clips are fully engaged with the door frame.

