

X028

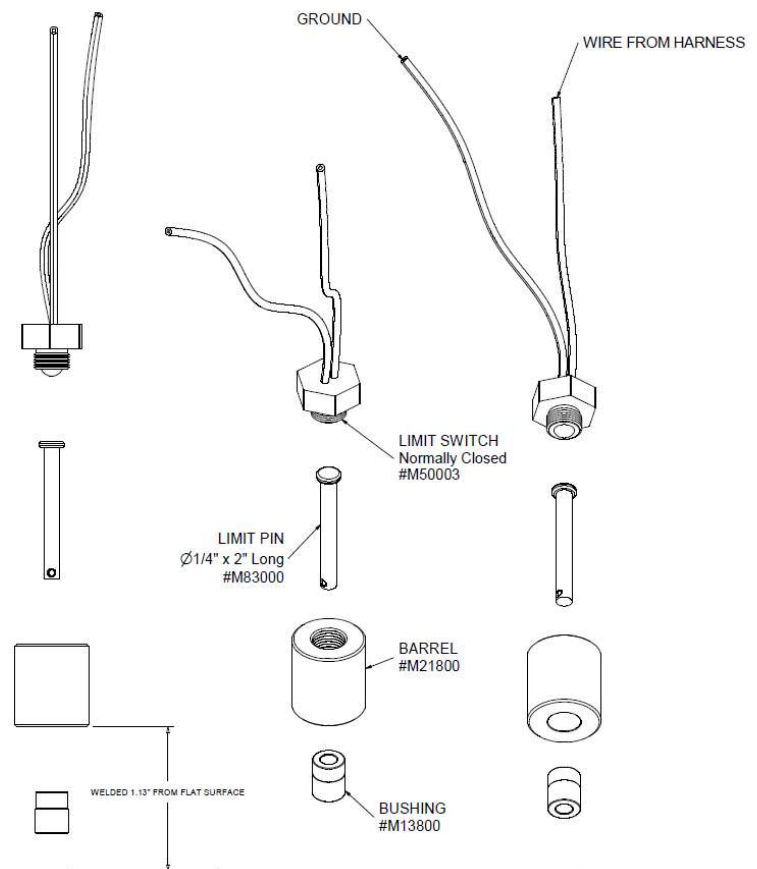
General Maintenance



For most Bigfoot landing gear and leveling systems...

#1. Check the power supply to the Bigfoot system, RV house batteries, diesel chassis battery, trailer battery, etc. Test the voltage under load by using a volt meter and test your voltage with the system pump operating, if this drops below 10-11 volts, you may need to look into replacing the battery or batteries. Also a good idea to check other connections on the pump assembly, including the power wire (connected to copper strip) and the ground from the pump to the frame. Our pumps ground at the solenoid mounting flange and contact between the pump steel housing and the frame it is bolted to, and has a 10 ga. cable that connects the tank body to the frame, typically only 3-6 ft long.

#2. Inspect and maintain the limit switches (if equipped) for each cylinder, located near the footpad attached to the housing of the cylinder. See diagram on the right to identify the limit switch. These can be removed with a 7/8" wrench. To pro-long the life of the switch, remove and apply di-electric grease on the ball itself and the limit pin. These are normally closed switches and are tied to your "All Up" indication, Retract function, and ignition safety alarm on your panel (if equipped). Check the condition of each limit pin to make sure they are not bent, replacement pins or switches are always in-stock.



#3. Check for fluid leaks on the ground, footpad, hose, fittings, etc. Our systems use ATF so the fluid should be red in color. If leak found, locate the origin and check fluid level inside the pump assembly, fluid level should be between 1-1.5" below the top of the reservoir, central pump 4pt systems can be 1.5-2" below the top.

#4. If your cylinder chrome shaft/rod is exposed (not a square jack), spray dry teflon spray on the shaft when leaving for long period of time, more frequently if by the ocean or salty environment. No WD40.

Feel free to contact us with any questions or concerns!

Bigfootleveler.com - 800-752-9815