

HT-MiniMix Gas Engine Mixer

MiniMix Series

Features and Benefits

- Interchangeable Venturi Insert
- Precise Air Fuel Ratio Control
- For Natural Aspirated or Turbocharged Engines up to 150kW
- Integrated Design
- Sealing through O-Ring Design
- Lambda Probe or Pressure Map Control with Cuteline Series
- CAN Controlled



MiniMix a unique mixer

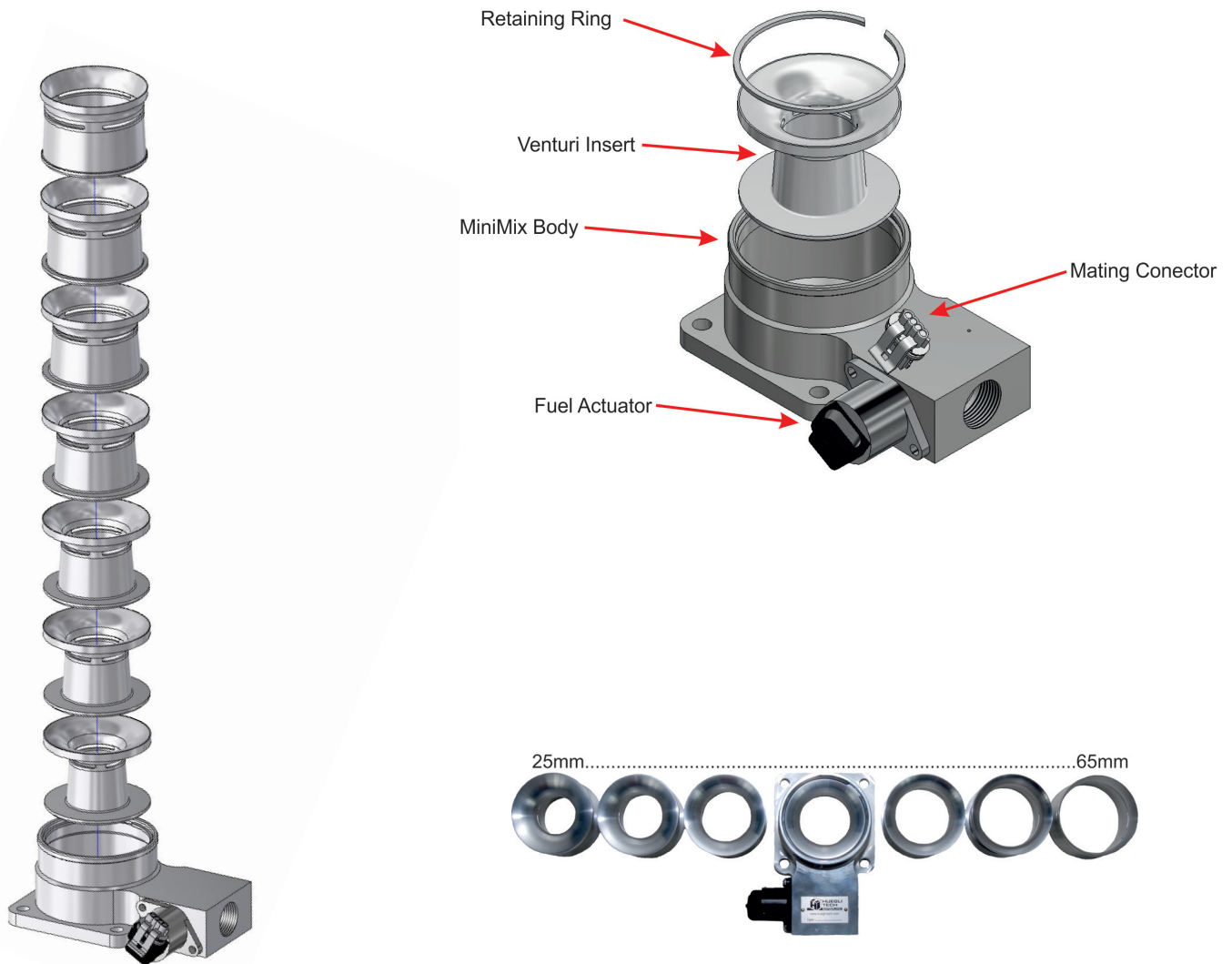
Huegli Tech present a modular system allowing the perfect gas mixer to suit engine size and power.

The MiniMix unit meters the amount of gas supplied to the engine and mixes this with the intake air. The metering unit is driven by a stepper motor. Huegli Tech offer two Cuteline modules that can provide the required stepper-motor input signal; HT-CL-AF1000-LS which works in combination with a wideband lambda sonde or HT-CL-1500P which uses the input from an inlet pressure sensor. The included software not only allows real-time adjustment of parameters during commissioning, but can configure the units to provide continuous CAN data to J1939-capable engine controllers.

Eight mixer venturis are currently available with internal diameters between 25 mm and 65 mm. These can be exchanged in the field if necessary. the MiniMix mounting flange has an O-ring groove and a high temperature O-ring.

Technical Specification

Mixer Assembly



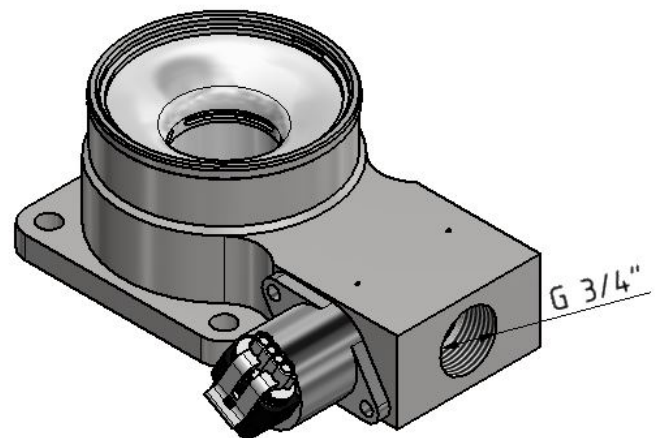
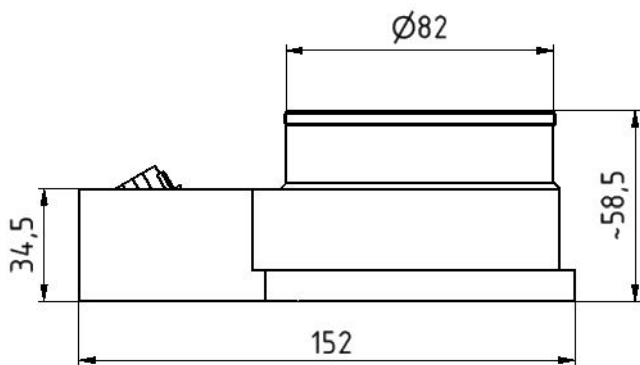
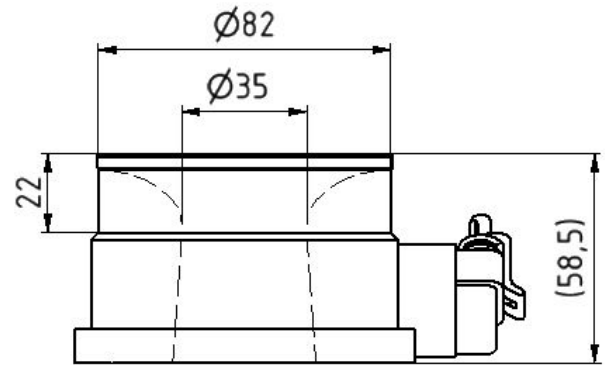
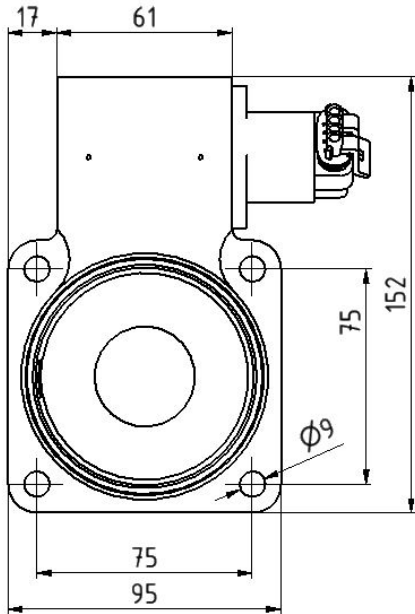
Selection of Venturi Insert Diameter:

Venturi Diameter Insert available	Calculated Pressure drop / mbar	Airvolume m3/h	Airmass kg	KW
Venturi 25 mm	20	160	190	10-26
Venturi 30 mm	20	180	205	26-36
Venturi 35 mm	20	200	242	36-45
Venturi 40 mm	20	266	322	46-59
Venturi 45 mm	20	345	417	60-76
Venturi 50 mm	20	442	535	77-98
Venturi 55 mm	20	565	683	99-125
Venturi 60 mm	20	730	883	126-140
Venturi 65 mm	20	975	1180	140-160

HT-MiniMix Gas Engine Mixer

MiniMix Series

Dimensions:



HT-MiniMix Gas Engine Mixer

MiniMix Series

Order Number for MiniMix:

Order Number	Venturi Diameter	HT-VNM Fuel Actuator	O-Ring
HT-MMX 25	25mm	Included	Included
HT-MMX 30	30mm	Included	Included
HT-MMX 35	35mm	Included	Included
HT-MMX 40	40mm	Included	Included
HT-MMX 45	45mm	Included	Included
HT-MMX 50	50mm	Included	Included
HT-MMX 55	55mm	Included	Included
HT-MMX 60	60mm	Included	Included
HT-MMX 65	65mm	Included	Included

Mating Harness for VNM Stepper Motor

CH-VZM-L4, Not included. If a different length is desired, please specify

Wiring Harness and Spare Parts for MiniMix:

For mixer fuel actuator:

- CH-VZM-L4.....



- O-Ring-78X3



- HT-VZM-150302-M3 and HT-ZZM-19.8-R20.....



HT-MiniMix Gas Engine Mixer

For best performance, the experts recommend:

MiniMix Series



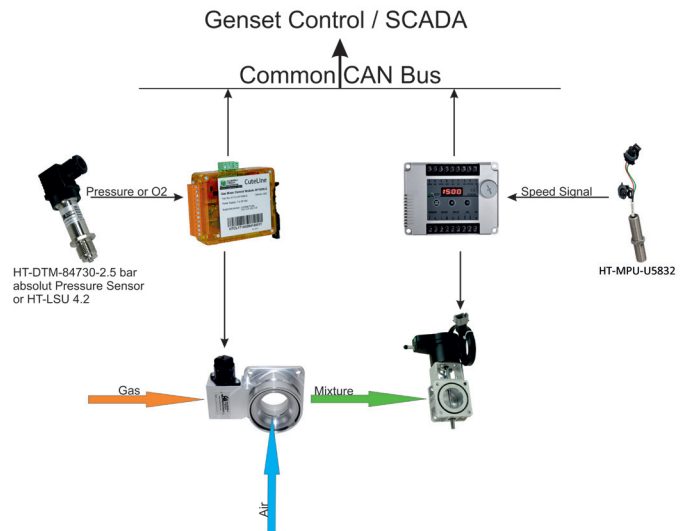
The closed loop together with Cuteline Lambda-controller

The Lambda Control in the closed loop consisting of:

- HT-CL-AF-1000LS or 1500P Lambdacontroller
- HT-DTM-8473 0-2.5bar Absolut Pressuresensor
- LSU 4.2 Lambdasensor

Wiring Harness

- CH-DTM-8473-L07
- CH-LSU-L07



Local Distributor / Partner:



HUEGLI TECH AG (LTD)
Murgenthalstrasse 30
4900 Langenthal Switzerland
Phone: +41 62 916 50 30
Fax: +41 62 916 50 35

e-mail: sales@huegli-tech.com
www.huegli-tech.com