

## RM-814/RM-25

### Product Features

- Accurate gas metering
- Fast response to load transient
- CAN Communication (combined with AF-200)
- On board I/O's
- Automatic and Manual drive
- RM-814 (4-14 litre engine displacement)
- RM-25 (14-25 litre engine displacement)
- Status indication

### Advantage

- 12 and 24 VDC
- 6 Analogue Input [VDC, mAmp,  $\Omega$ ]
- 1 Binary Input
- 1 Binary Output
- 1 Analogue Output [VDC]
- IP-67 Protected



## Precise air gas metering

The RM Mixer is an enhanced sophisticated Air Gas blender based on the approved ring gap principal.

Due to a precise mechanical gear system an accurate Lambda control tolerance smaller than +/- 0.01 is guaranteed.

Engineering and design has achieved a level which allows using the mixer for Natural, Bio and other gas application. Robustness and environmental protection makes this mixer unique and extremely user friendly.

An integrated, well protected electronics' PCB equipped with several Inputs and Outputs provides monitoring features for all important parameter like gas inlet, air filter clock up, exhaust temperature etc.

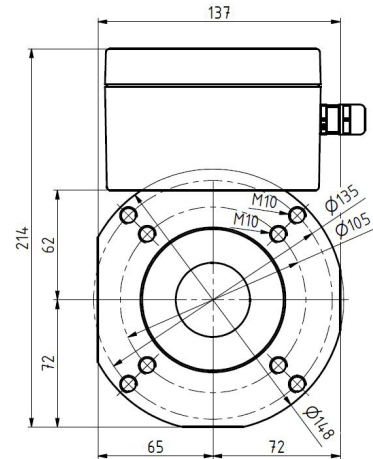
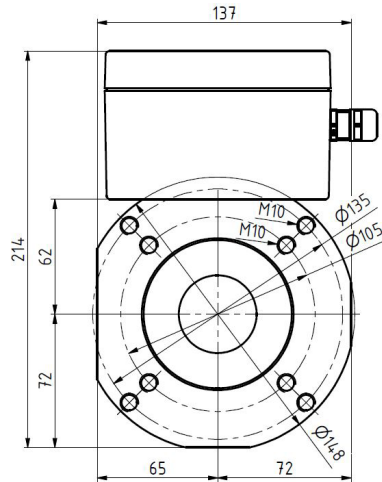
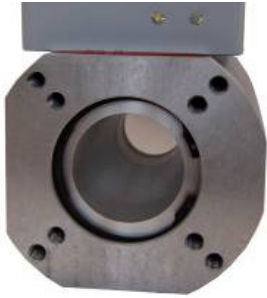
An analogue output can be used as addition signal output. CAN Bus communication allows flexibility together with HT-DST4602 and the AF-2000 control system and cost savings for additional I/O's.

## Dimensions

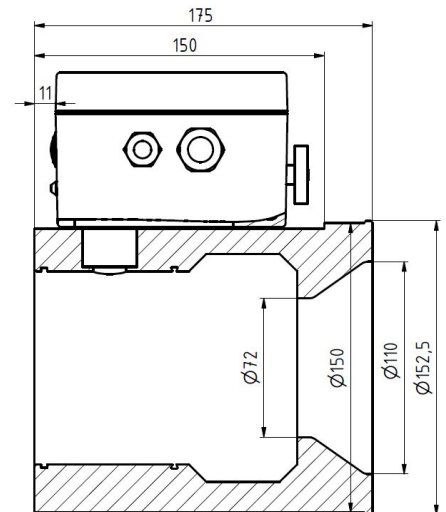
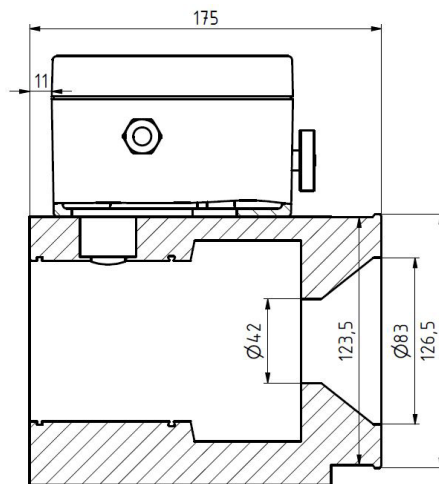
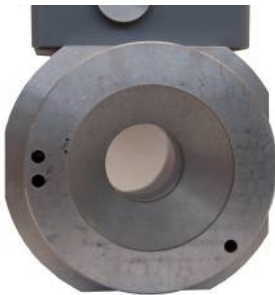
**RM-814**

**RM-25**

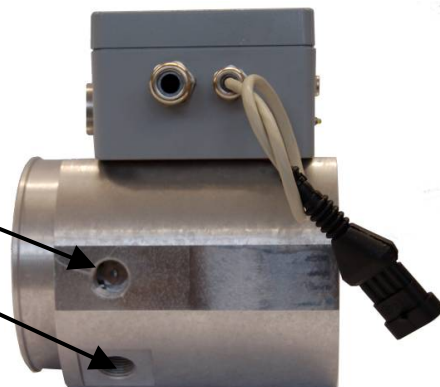
### Engine side



### Airfilter Side

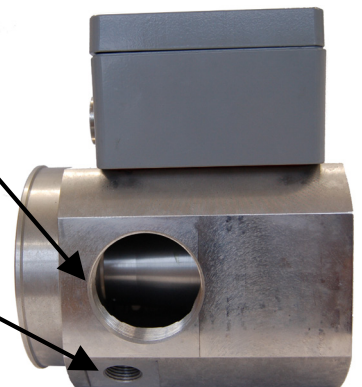


3/4" for crank case ventilation  
1/2" for gas pressure sensor

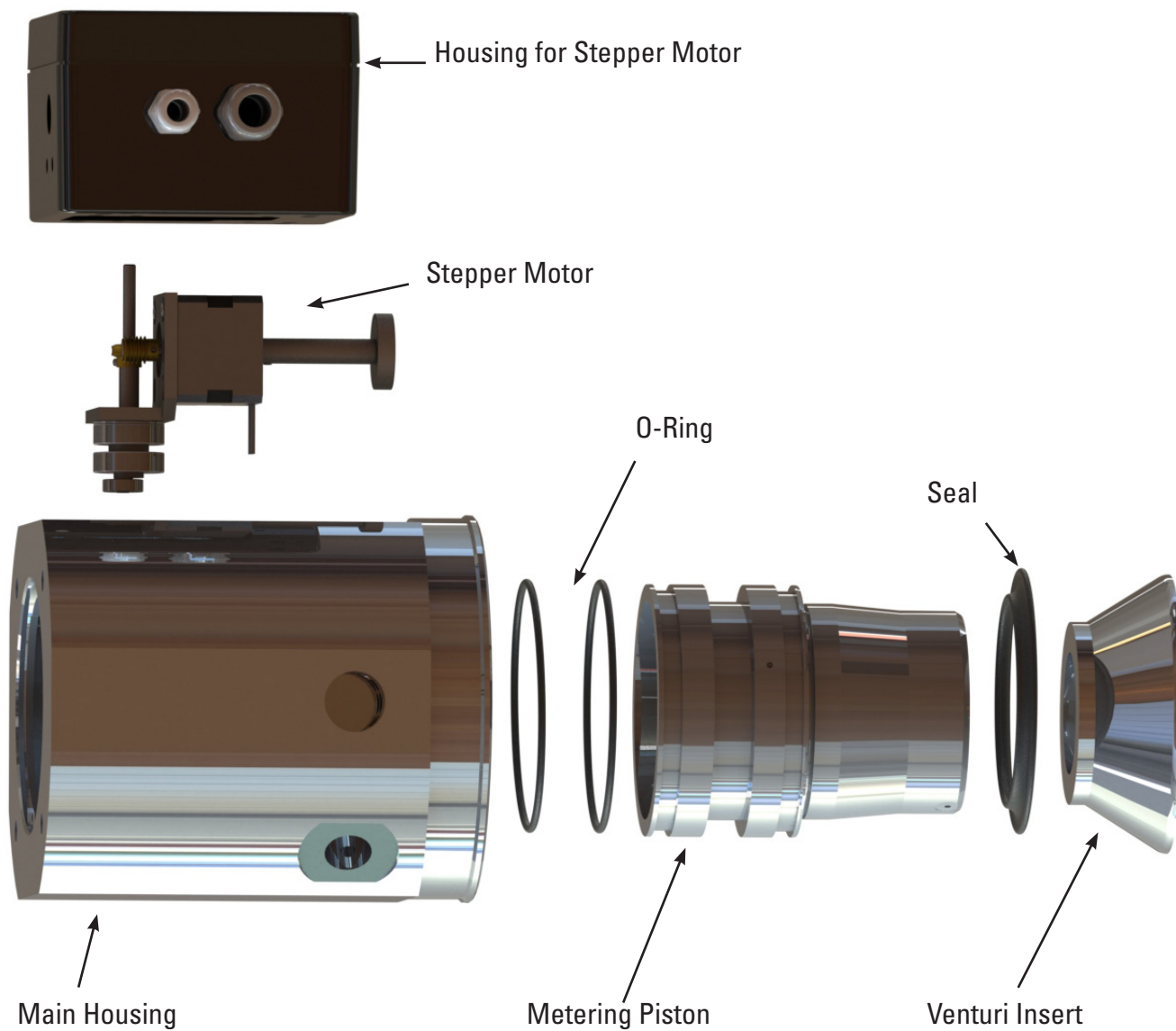


Gas Pipe 2"

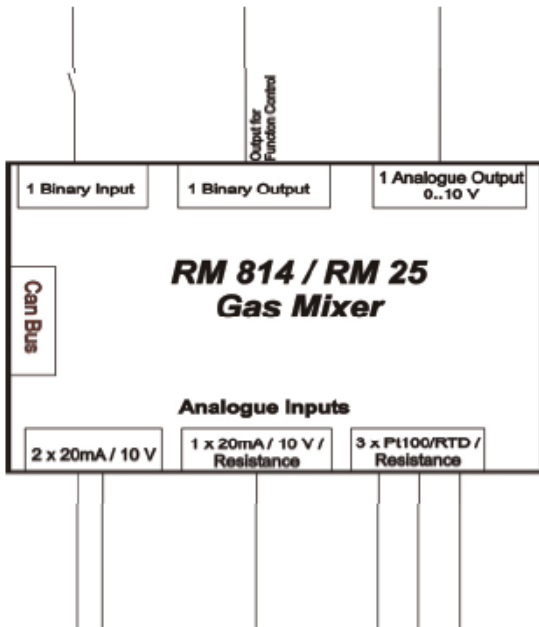
1/2" for pressure regulator or negative pressure sensor



## Mixer Assembly



Gas pressure, manifold pressure, exhaust temperature, manifold-temperature and other parameters can be connected directly to the mixer.



A brilliant combination of control units is to use the mixer together with the AF-2000 lambda controller and HT-DST4602 Gen-set control system. This unleashes pure control, logic and monitoring power and allows unbounded communication among all peripheries.

Local Distributor / Partner:



HUEGLI TECH AG (LTD)  
Murgenthalstrasse 30  
4900 Langenthal Switzerland  
Phone: +41 62 916 50 30  
Fax: +41 62 916 50 35

e-mail: [sales@huegli-tech.com](mailto:sales@huegli-tech.com)  
[www.huegli-tech.com](http://www.huegli-tech.com)