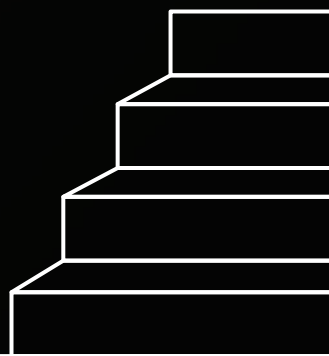


FOOTSTEP WITH

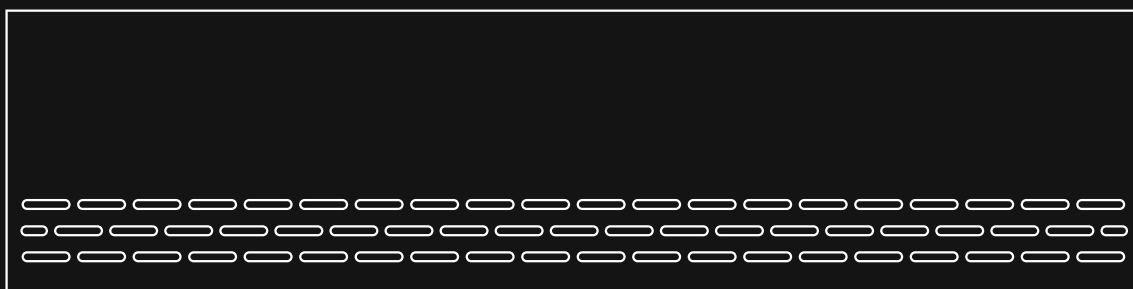
*Grace elegance*



200x  
1200mm

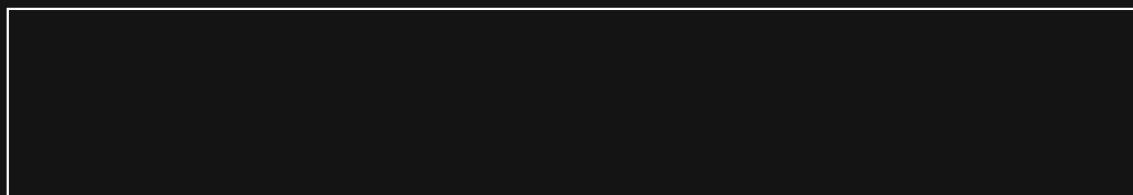
300x  
1200mm

## STEP



300x1200mm

## RISER



200x1200mm

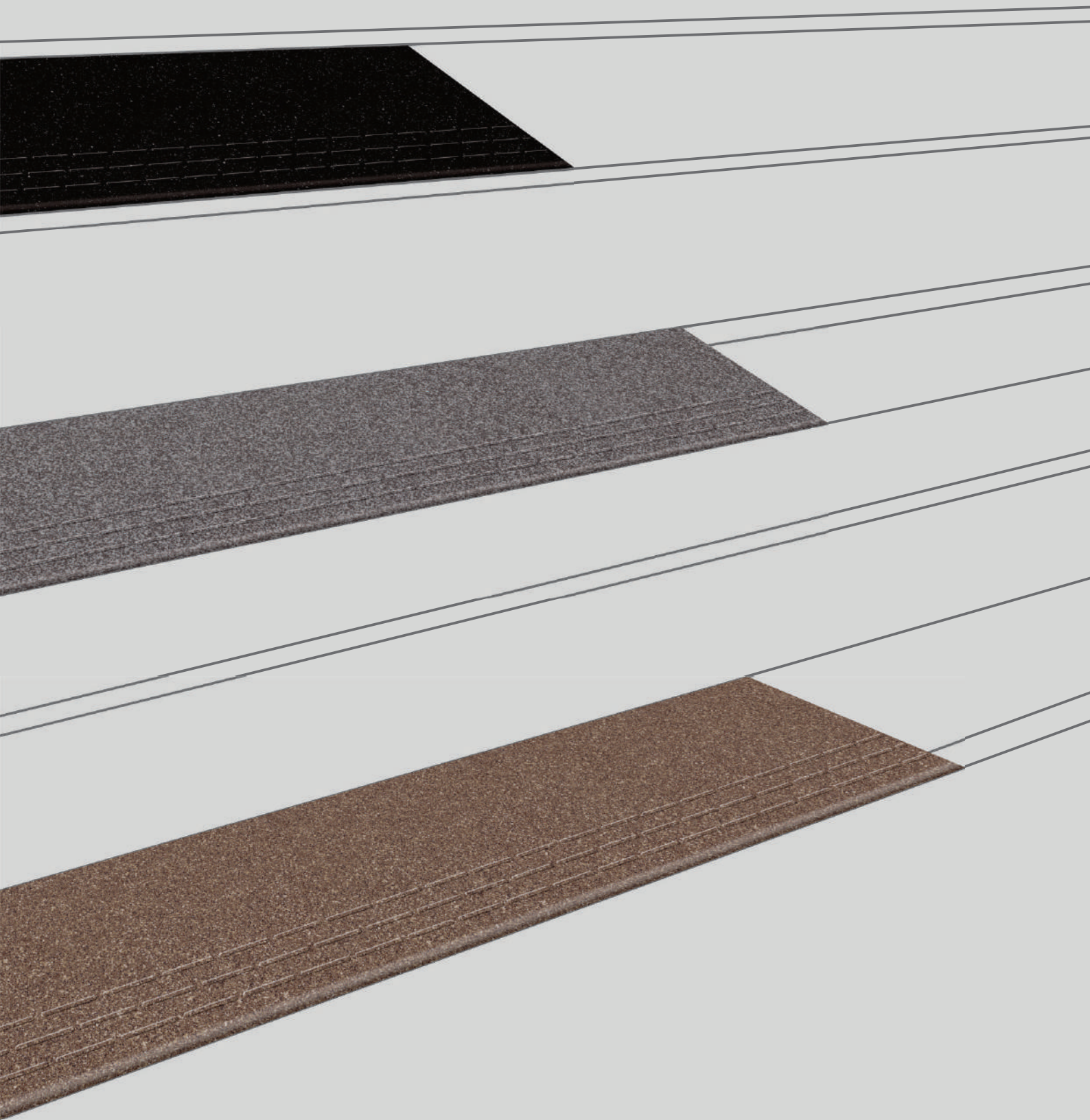
## ALSO AVAILABLE IN

200x 1000mm	300x 1000mm
----------------	----------------

## SPECIFICATION

---

Highly durable, ideal for heavy traffic and commercial areas, Indoor & Outdoor. Embossed Tread Lines Provide extra grip for higher safety near step edge. Enhance the aesthetic appeal of your staircase with our full-body vitrified step risers. Crafted with high-quality materials and innovative designs, they add a touch of elegance to any space.



## APPLICATION AREA



INDUSTRIES



HOSPITALS



RESTAURANTS



OFFICES



AIRPORT



SHOPPING  
MALLS



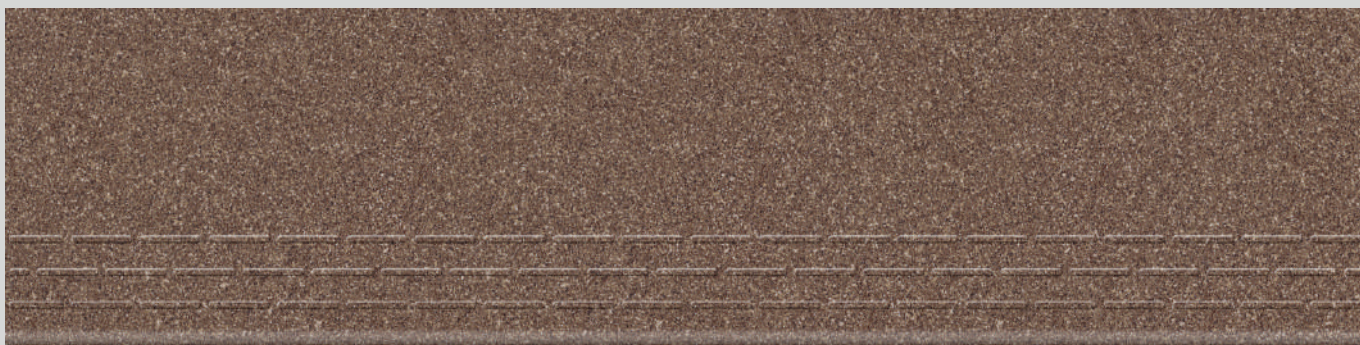
SCHOOL



SUPER  
MARKETS



STEP



300x1200mm

RISER



200x1200mm

## GRANITE MATT CHOCO

Finish :  
Matt

Body :  
FULL BODY

ALSO AVAILABLE IN

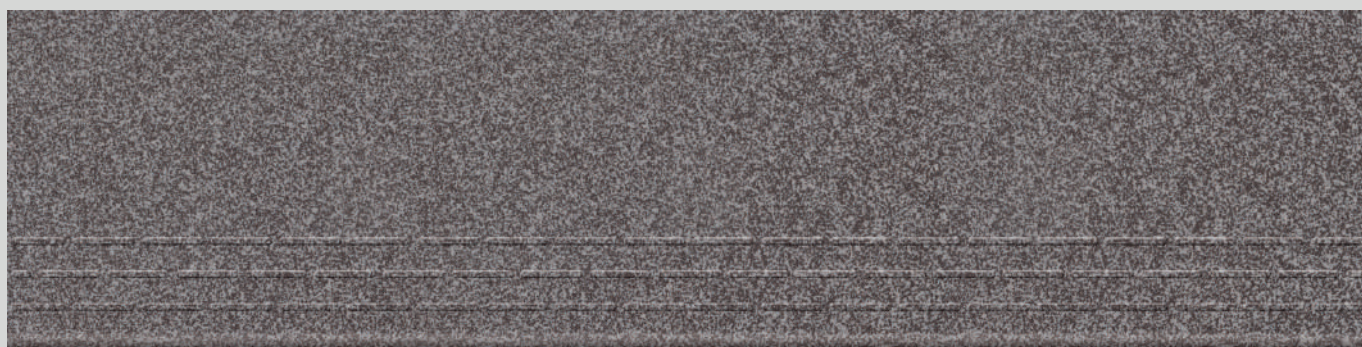
200x  
1000mm

300x  
1000mm





STEP



300x1200mm

RISER



200x1200mm

## GRANITE MATT NERO

Finish :  
Matt

Body :  
FULL BODY

ALSO AVAILABLE IN

200x  
1000mm

300x  
1000mm

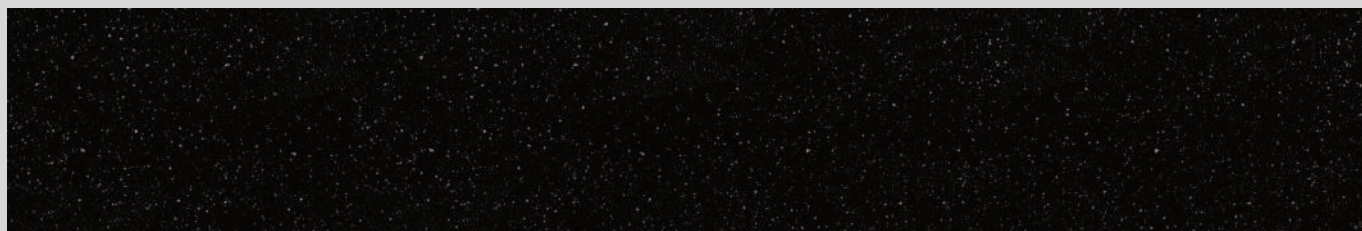


STEP



300x1200mm

RISER



200x1200mm

## GRANITE MATT JET BLACK

Finish :  
Matt

Body :  
FULL BODY

ALSO AVAILABLE IN

200x  
1000mm

300x  
1000mm



STEP



300x1200mm

RISER



200x1200mm

## GRANITE MATT WHITE

Finish :  
Matt

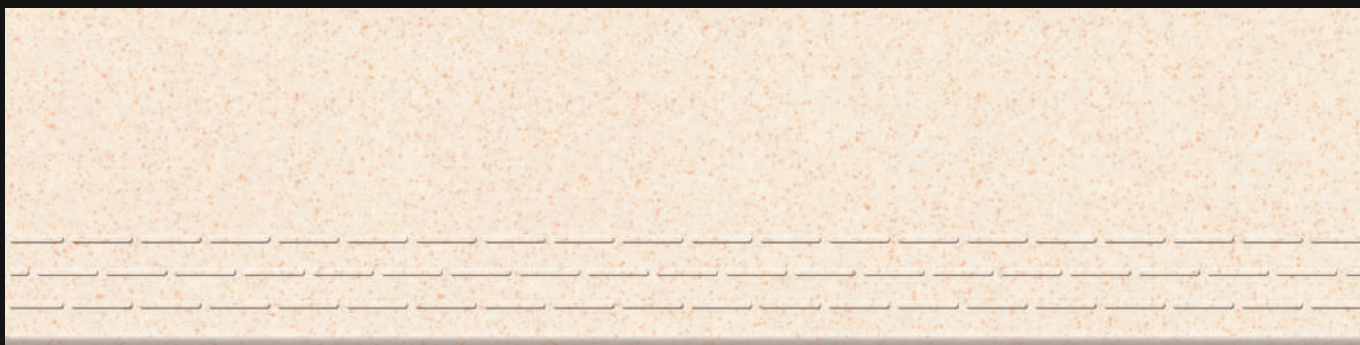
Body :  
FULL BODY







STEP



300x1200mm

RISER



200x1200mm

## GRANITE MATT CREMA

Finish :  
Matt

Body :  
FULL BODY

ALSO AVAILABLE IN

200x  
1000mm

300x  
1000mm



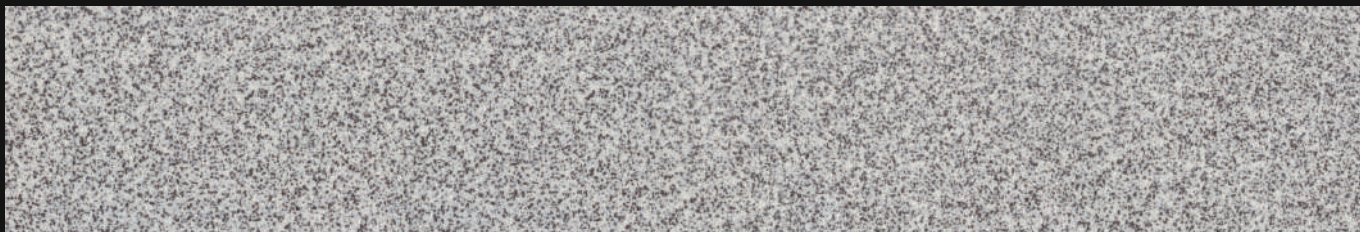


STEP



300x1200mm

RISER



200x1200mm

## GRANITE MATT RIVER

Finish :  
Matt

Body :  
FULL BODY

ALSO AVAILABLE IN

200x  
1000mm

300x  
1000mm

