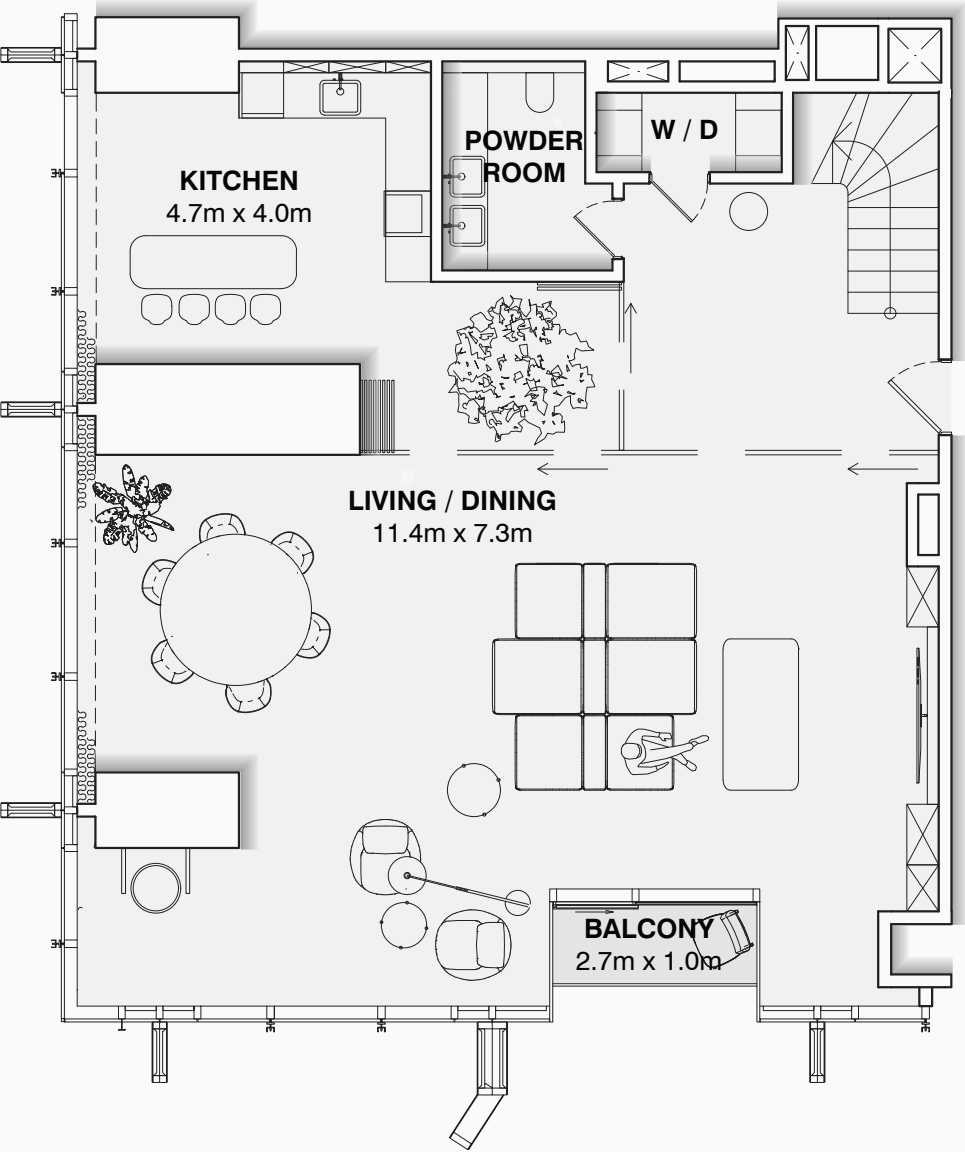
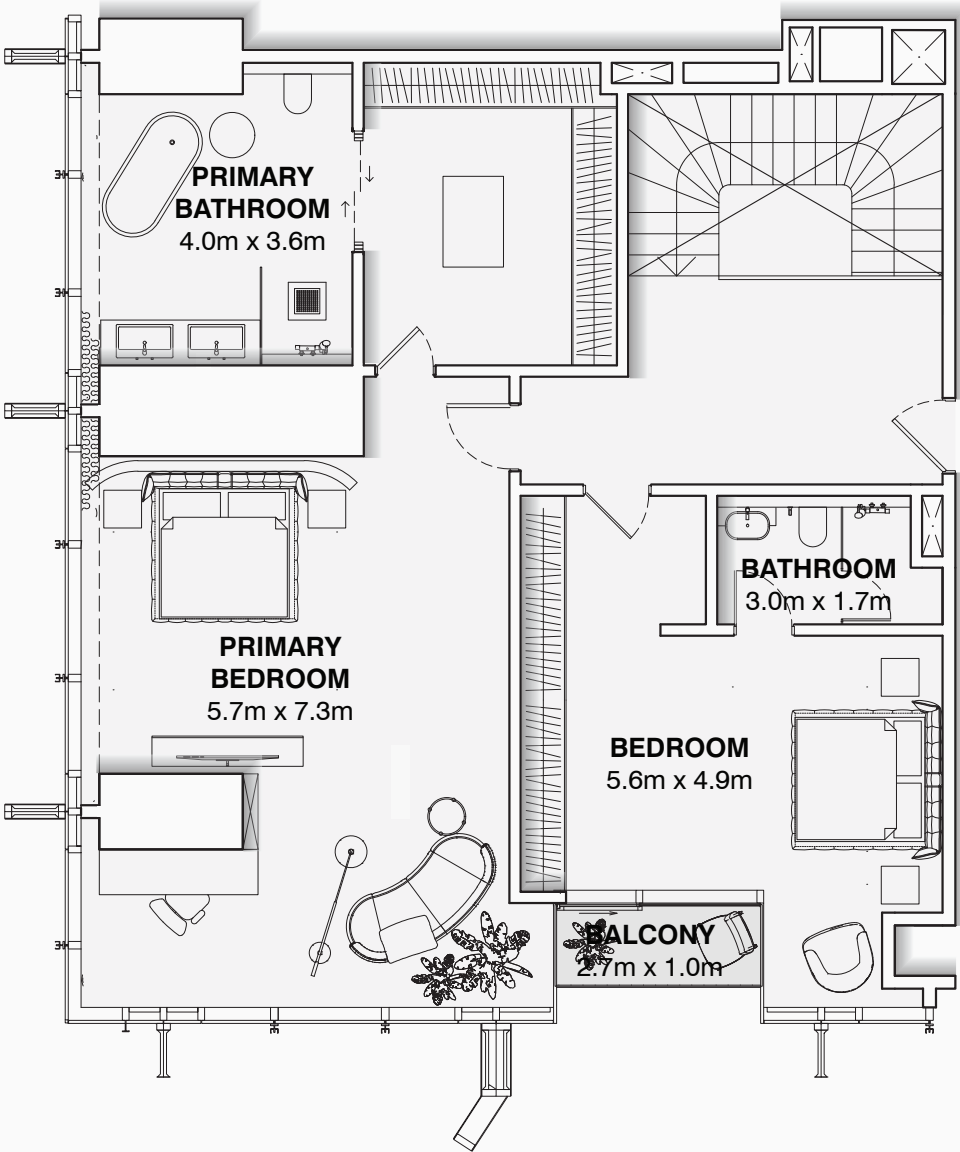


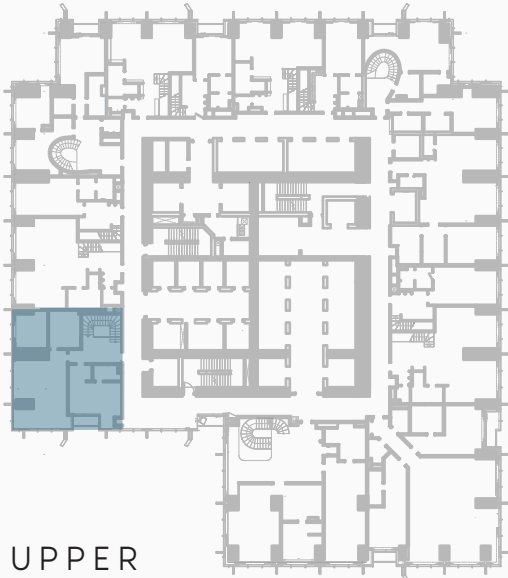
BUILDING NAME	REMARKS	<div>BURJ AZIZI</div> <div>DUBAI</div>
BURJ AZIZI		



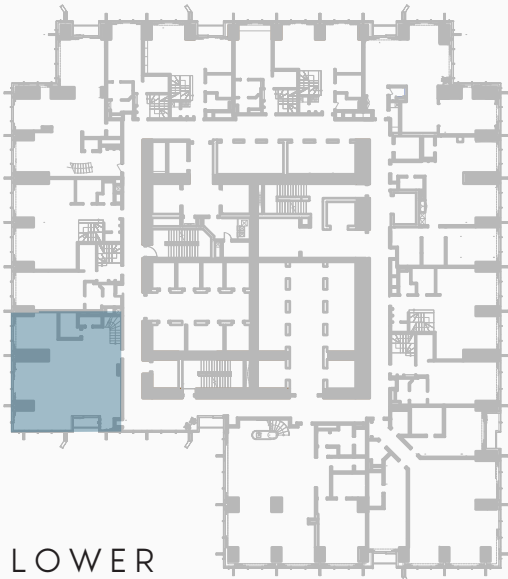
LOWER FLOOR



UPPER FLOOR



UPPER FLOOR



LOWER FLOOR



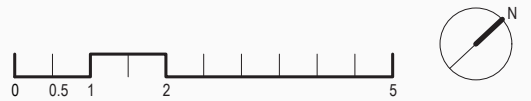
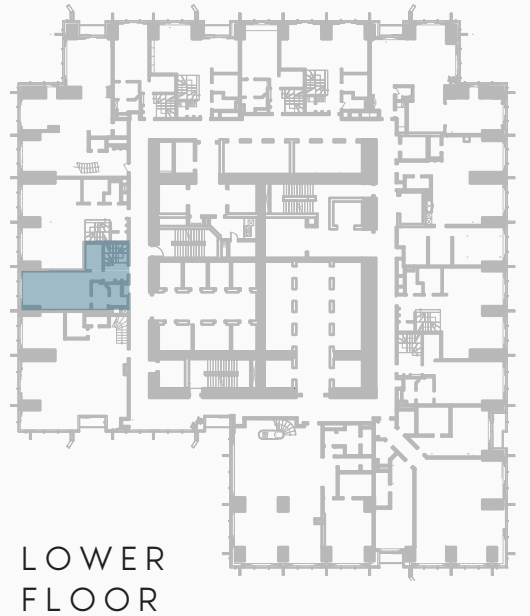
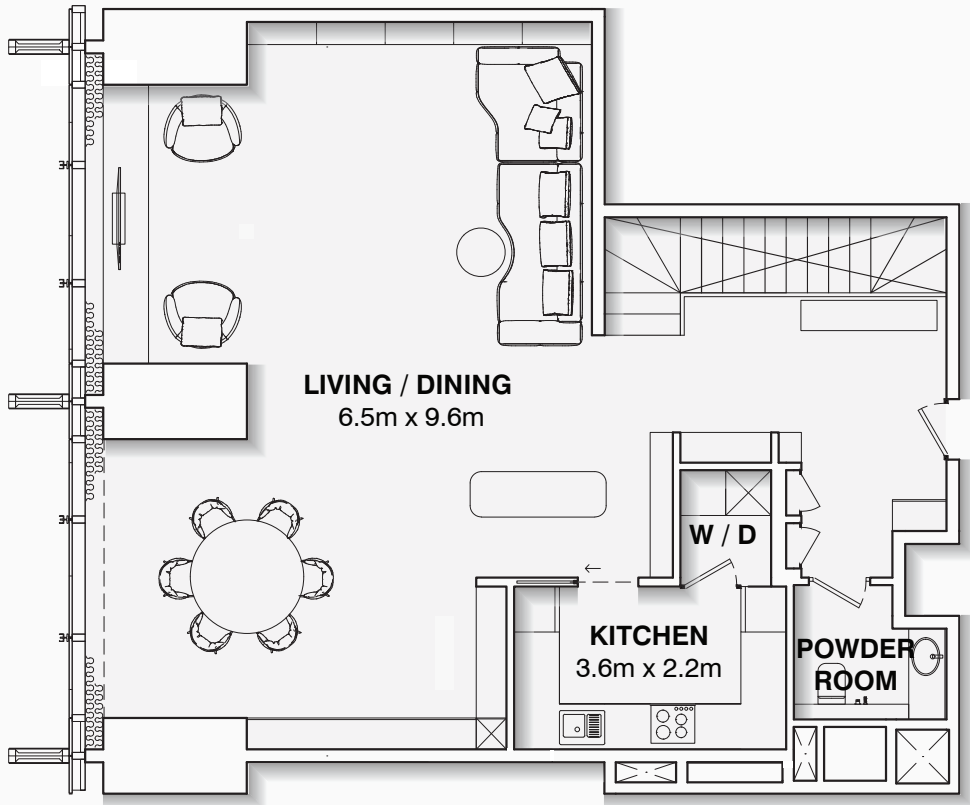
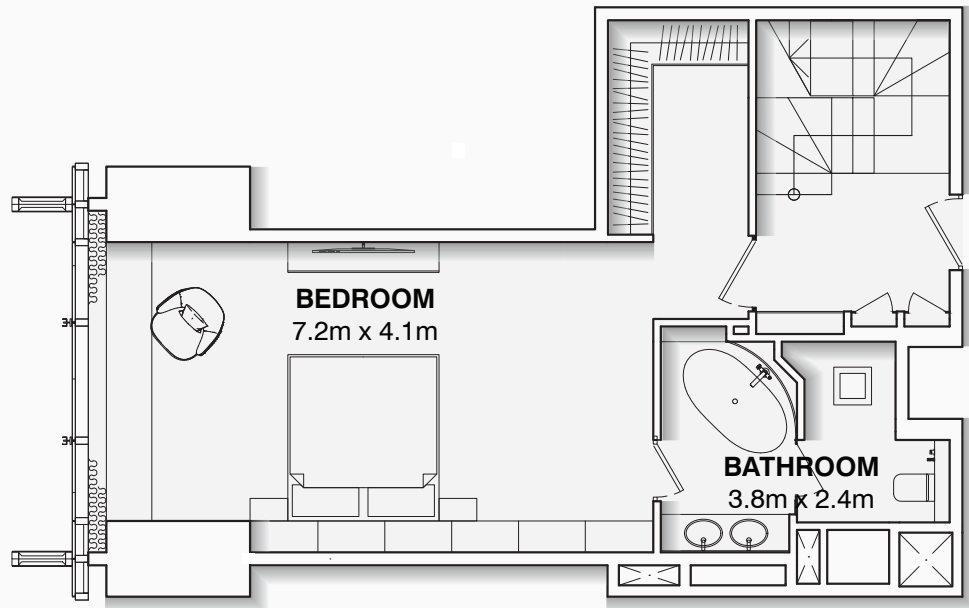
DISCLAIMER:

The marketing floor plans provided by the developer are for illustrative purposes only. Actual dimensions, layout, and finishes may vary from those depicted in the plans. Furniture shown in the plans are for decorative purposes only and are not included in the purchase of the property.

The developer reserves the right to make modifications, revisions, and changes to the floor plans, specifications and features without prior notice.

<div>AZIZI</div>	PROJECT NAME	FLOOR NO.	APT. AREA	VIEW	PAGE NO.	DATE
	BURJ AZIZI	72-87	3,049 SQFT			
	APARTMENT NO.	UNIT TYPE	BALCONY AREA	TOTAL APT. AREA		
	XX01	TWO B.R. PENTHOUSE	64 SQFT	3,113 SQFT		

BUILDING NAME	REMARKS	<div>BURJ AZIZI</div> <div>DUBAI</div>
BURJ AZIZI		

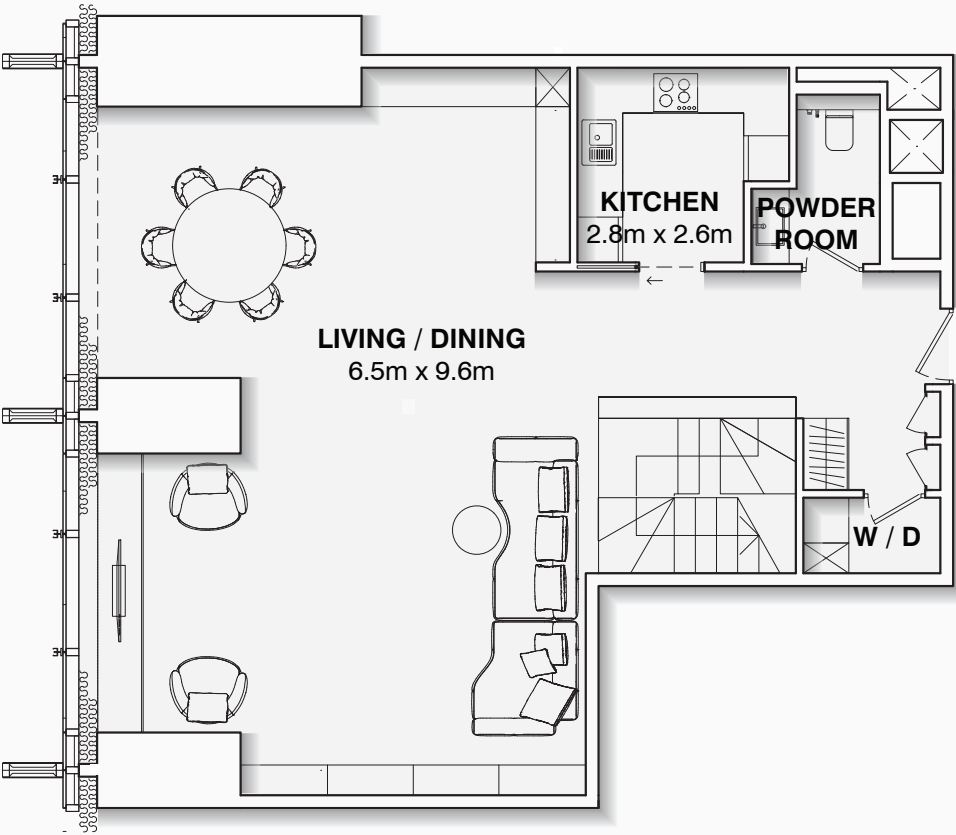


DISCLAIMER:

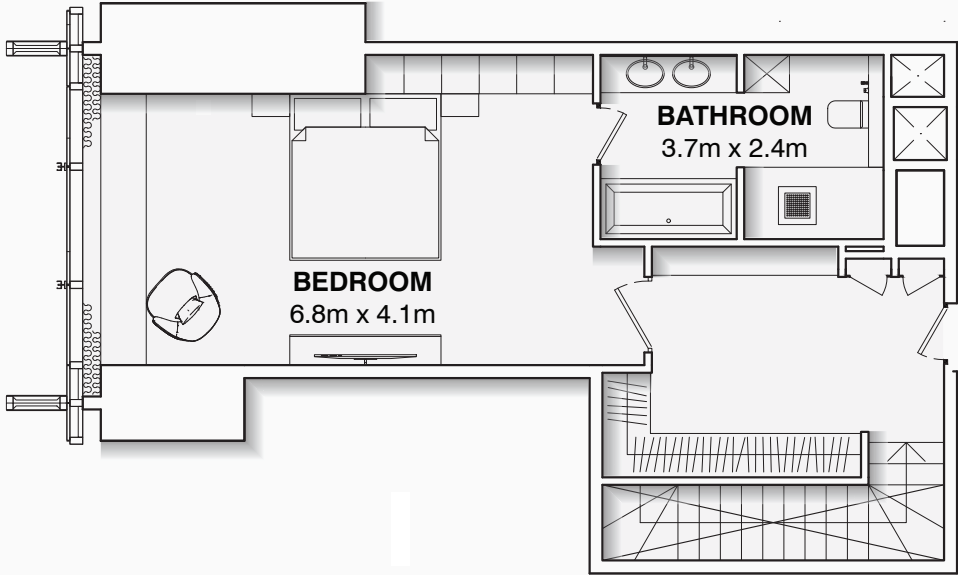
The marketing floor plans provided by the developer are for illustrative purposes only. Actual dimensions, layout, and finishes may vary from those depicted in the plans. Furniture shown in the plans are for decorative purposes only and are not included in the purchase of the property.

The developer reserves the right to make modifications, revisions, and changes to the floor plans, specifications and features without prior notice.

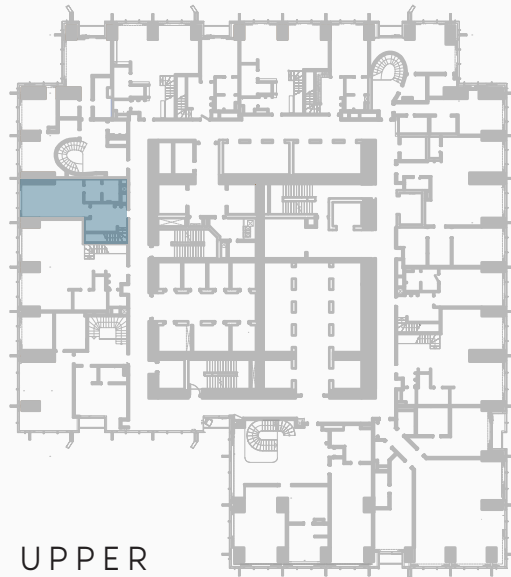
<div>AZIZI</div>	PROJECT NAME	FLOOR NO.	APT. AREA	VIEW	PAGE NO.	DATE
	BURJ AZIZI	72-87	1,746 SQFT			
	APARTMENT NO.	UNIT TYPE	BALCONY AREA	TOTAL APT. AREA		
	XX02	ONE B.R. PENTHOUSE	-	1,746 SQFT		



LOWER FLOOR



UPPER FLOOR



UPPER FLOOR



LOWER FLOOR

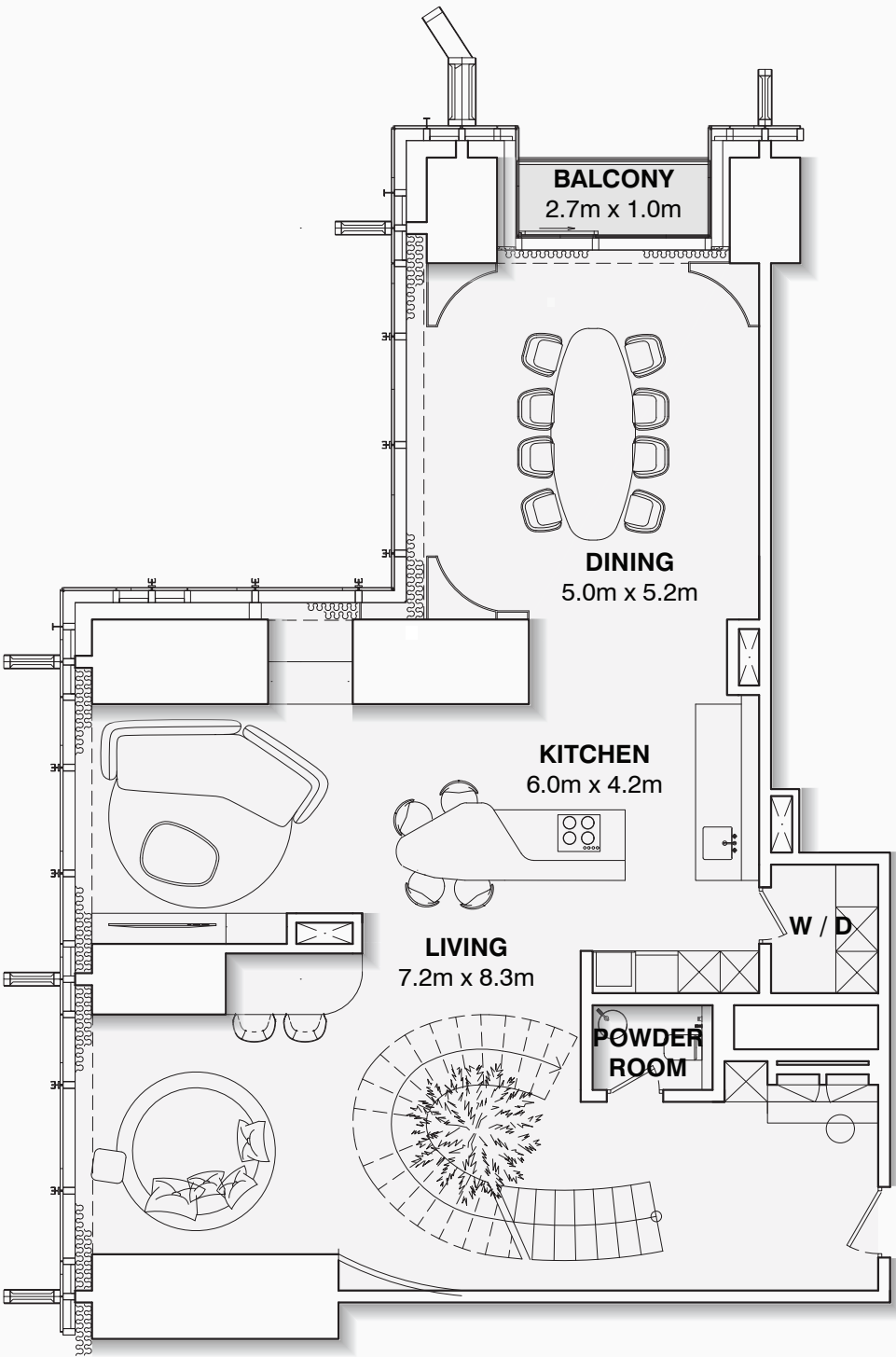


DISCLAIMER:

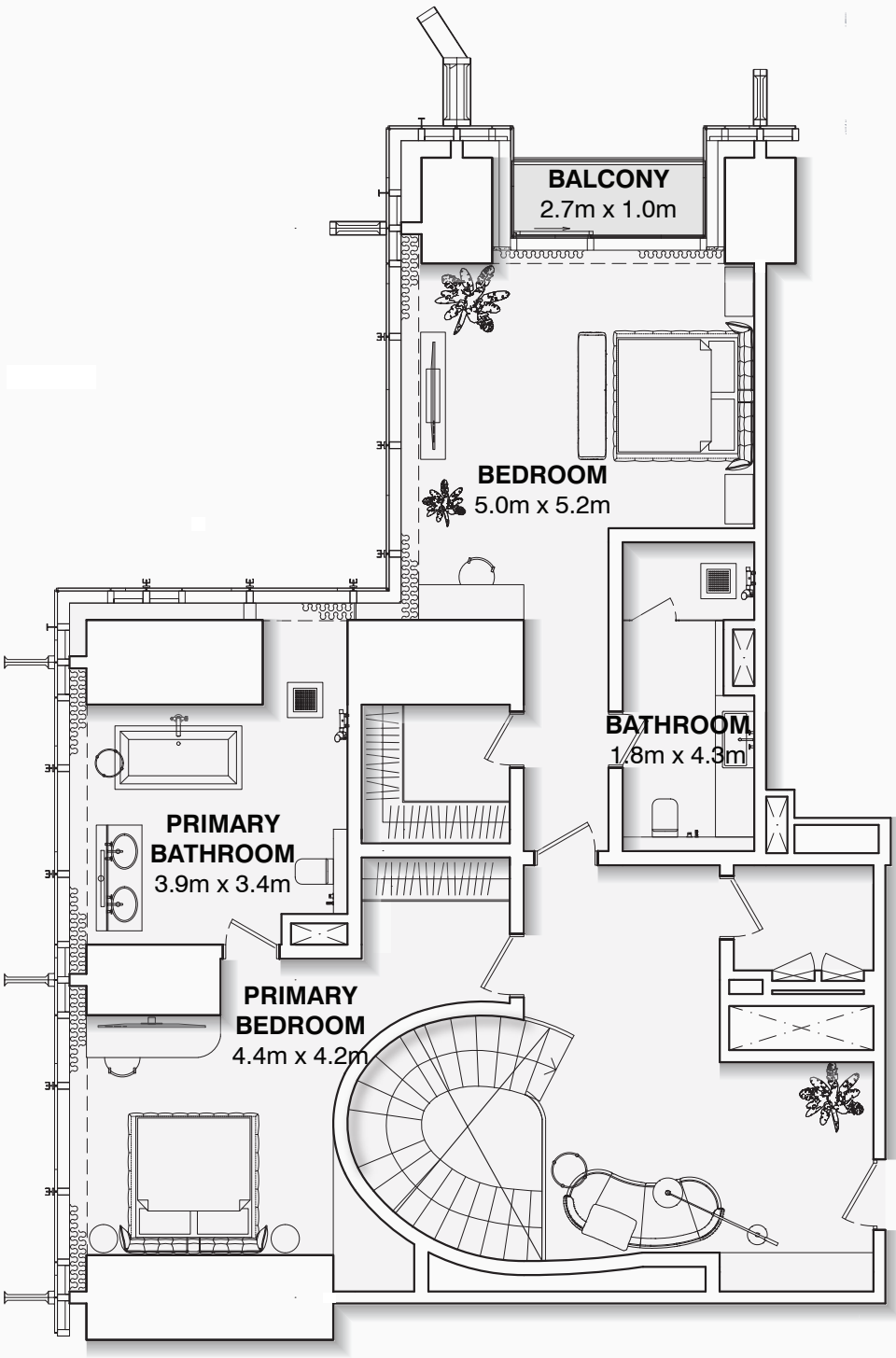
The marketing floor plans provided by the developer are for illustrative purposes only. Actual dimensions, layout, and finishes may vary from those depicted in the plans. Furniture shown in the plans are for decorative purposes only and are not included in the purchase of the property.

The developer reserves the right to make modifications, revisions, and changes to the floor plans, specifications and features without prior notice.

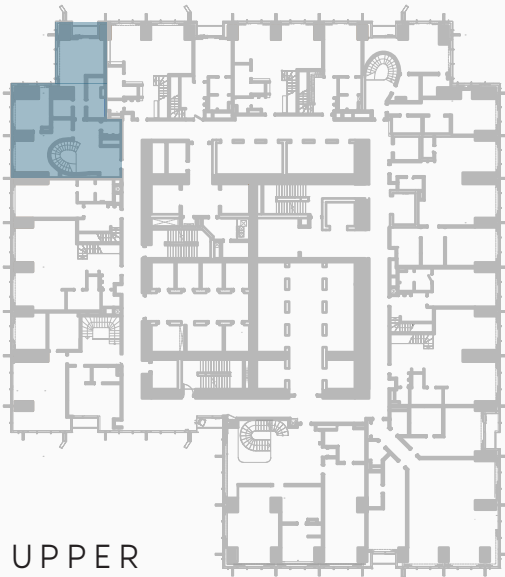
	PROJECT NAME BURJ AZIZI	FLOOR NO. 72-87	APT. AREA 1,697 SQFT	VIEW	PAGE NO.	DATE
	APARTMENT NO. XX03	UNIT TYPE ONE B.R. PENTHOUSE	BALCONY AREA -	TOTAL APT. AREA 1,697 SQFT		



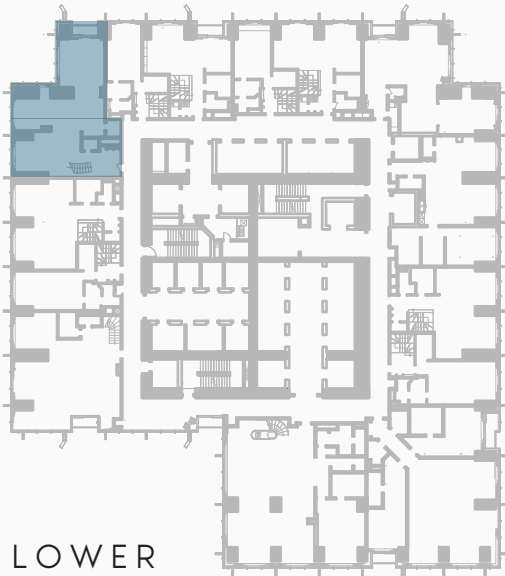
LOWER FLOOR



UPPER FLOOR



UPPER FLOOR



LOWER FLOOR



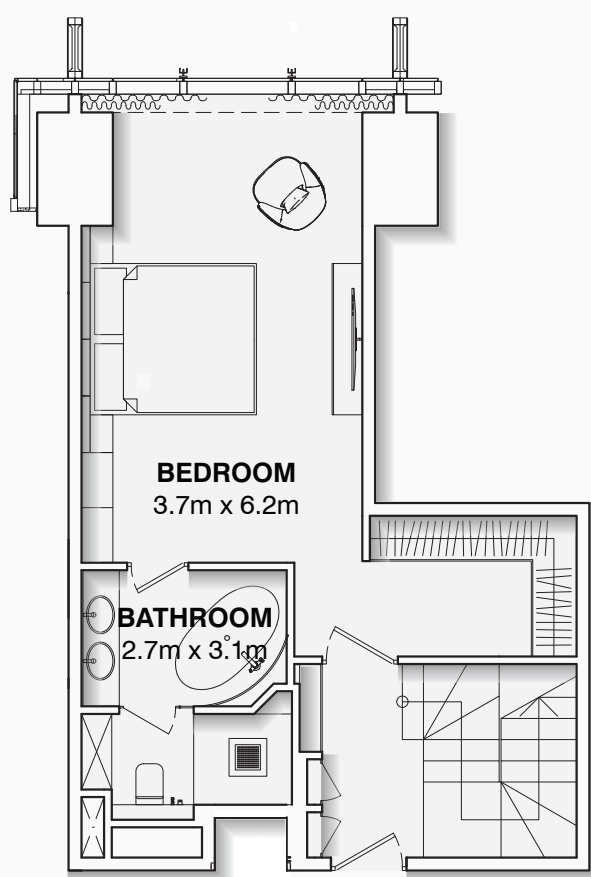
DISCLAIMER:

The marketing floor plans provided by the developer are for illustrative purposes only. Actual dimensions, layout, and finishes may vary from those depicted in the plans. Furniture shown in the plans are for decorative purposes only and are not included in the purchase of the property.

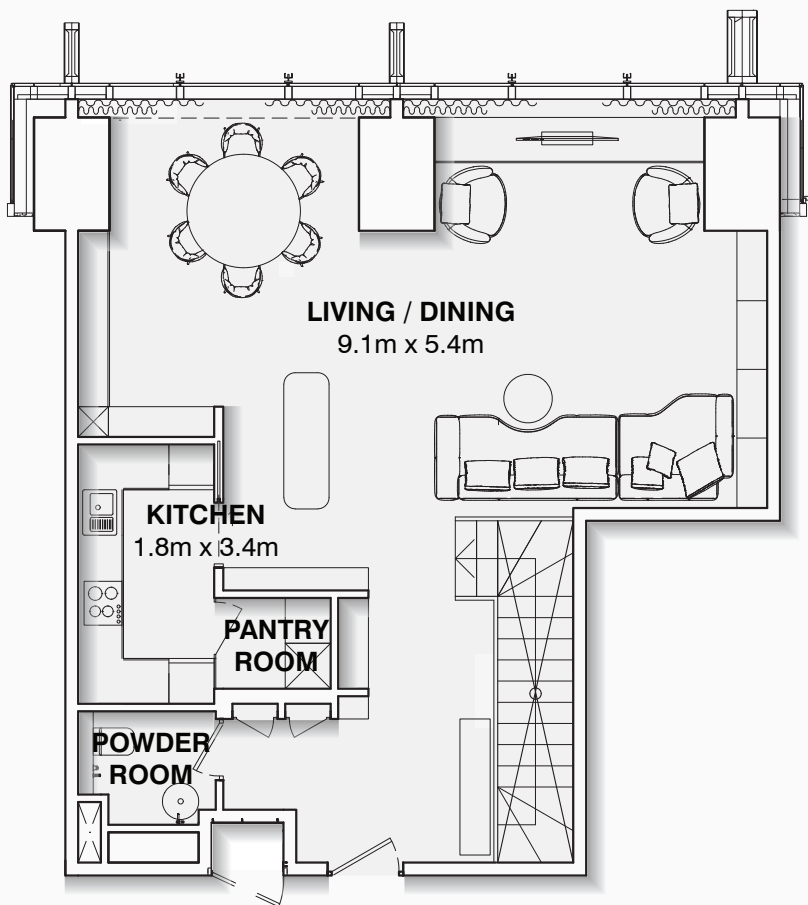
The developer reserves the right to make modifications, revisions, and changes to the floor plans, specifications and features without prior notice.

<div><div>AZIZI</div></div>	PROJECT NAME	FLOOR NO.	APT. AREA	VIEW	PAGE NO.	DATE
	BURJ AZIZI	72-87	3,016 SQFT			
	APARTMENT NO.	UNIT TYPE	BALCONY AREA	TOTAL APT. AREA		
	XX04	TWO B.R. PENTHOUSE	64 SQFT	3,080 SQFT		

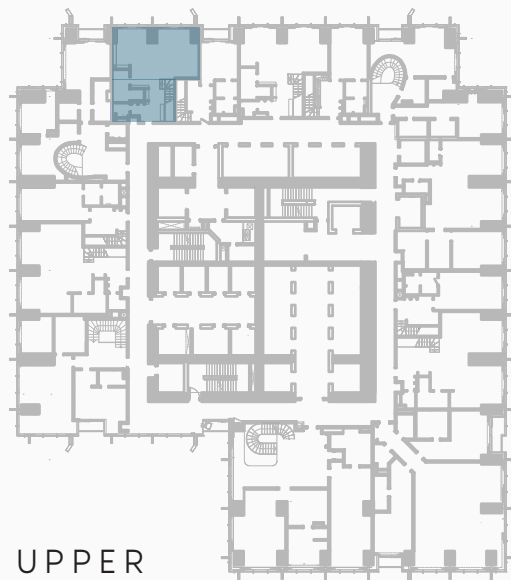
BUILDING NAME	REMARKS	<div> <div>BURJ AZIZI</div> <div>DUBAI</div> </div>
BURJ AZIZI		



LOWER FLOOR



UPPER FLOOR



UPPER FLOOR



LOWER FLOOR



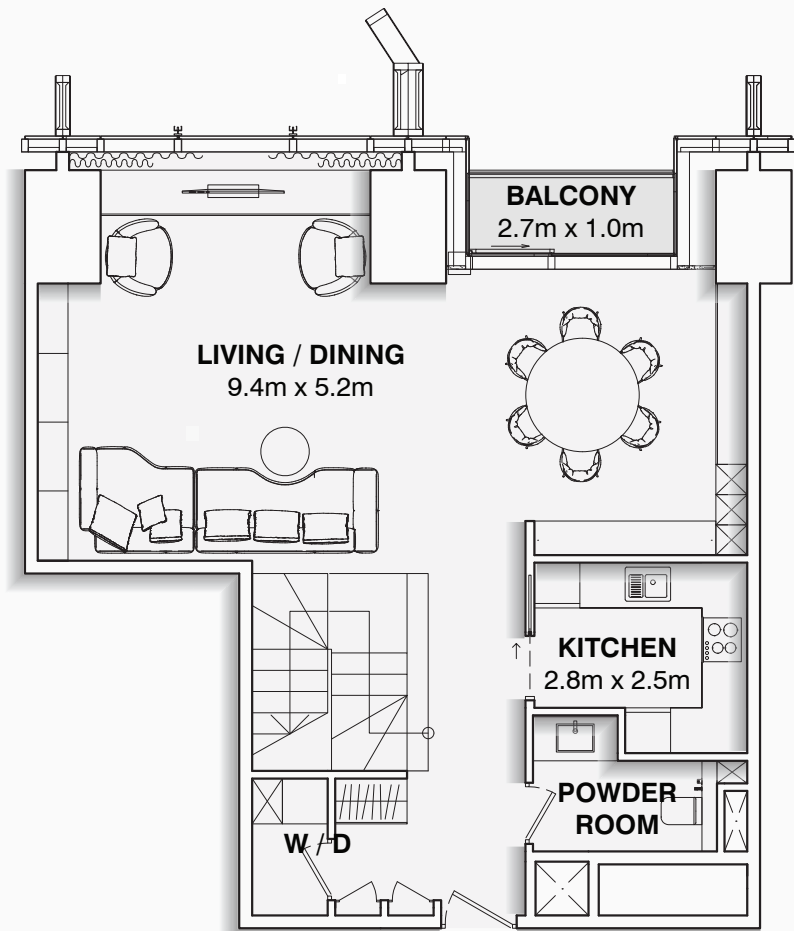
DISCLAIMER:

The marketing floor plans provided by the developer are for illustrative purposes only. Actual dimensions, layout, and finishes may vary from those depicted in the plans. Furniture shown in the plans are for decorative purposes only and are not included in the purchase of the property.

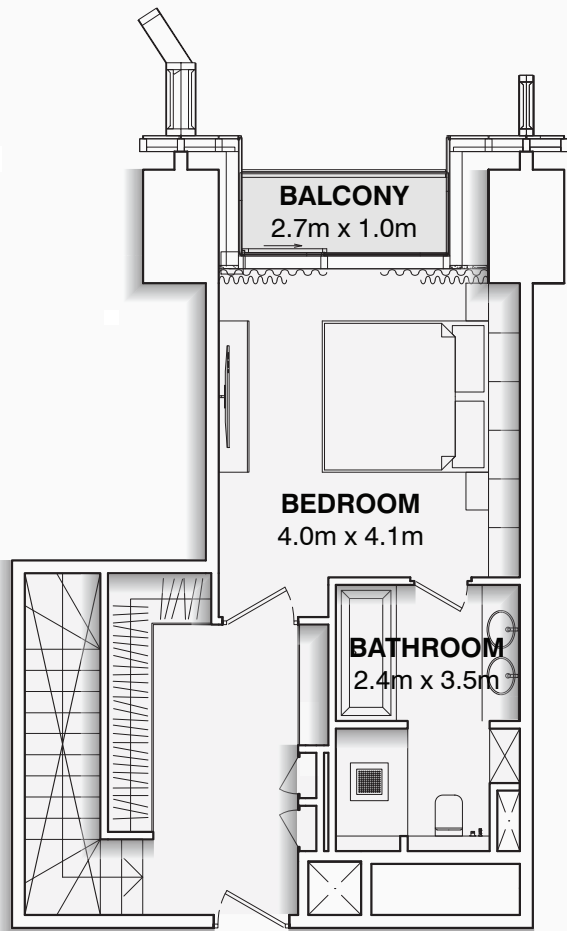
The developer reserves the right to make modifications, revisions, and changes to the floor plans, specifications and features without prior notice.

<div> <div></div> <div>AZIZI</div> </div>	PROJECT NAME	FLOOR NO.	APT. AREA	VIEW	PAGE NO.	DATE
	BURJ AZIZI	72-87	1,442 SQFT			
	APARTMENT NO.	UNIT TYPE	BALCONY AREA	TOTAL APT. AREA		
	XX05	ONE B.R. PENTHOUSE	-	1,442 SQFT		

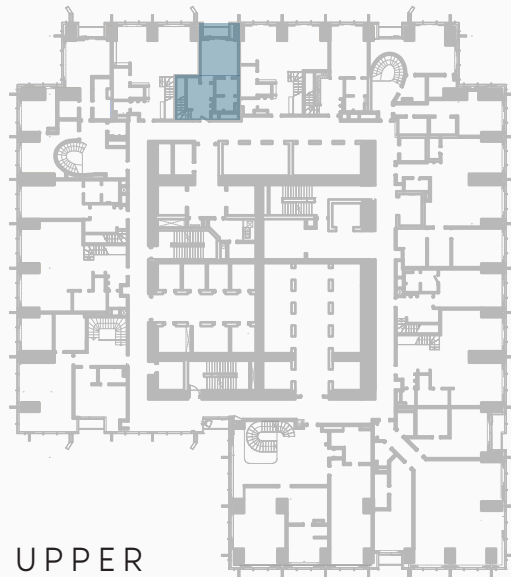
BUILDING NAME	REMARKS	<div>BURJ AZIZI</div> <div>DUBAI</div>
BURJ AZIZI		



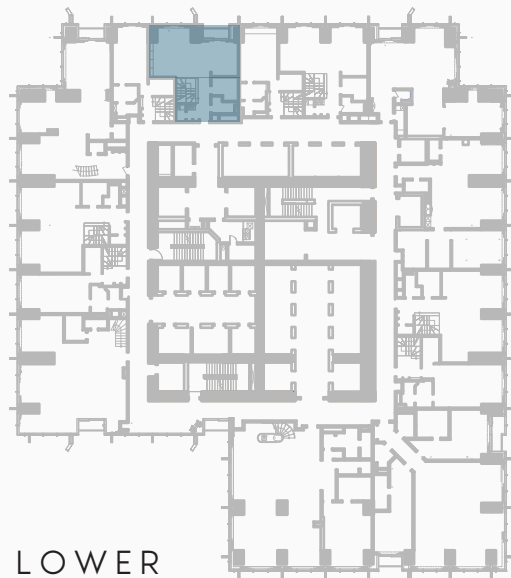
LOWER FLOOR



UPPER FLOOR



UPPER FLOOR



LOWER FLOOR



DISCLAIMER:

The marketing floor plans provided by the developer are for illustrative purposes only. Actual dimensions, layout, and finishes may vary from those depicted in the plans. Furniture shown in the plans are for decorative purposes only and are not included in the purchase of the property.

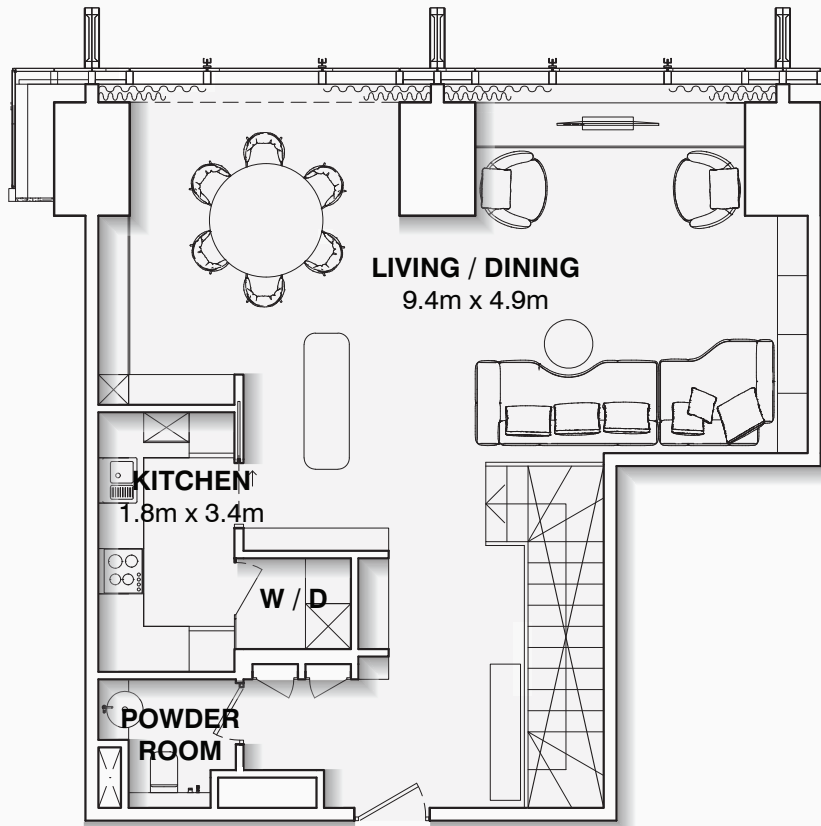
The developer reserves the right to make modifications, revisions, and changes to the floor plans, specifications and features without prior notice.

<div>AZIZI</div>	PROJECT NAME	FLOOR NO.	APT. AREA	VIEW	PAGE NO.	DATE
	BURJ AZIZI	72-87	1,362 SQFT			
	APARTMENT NO.	UNIT TYPE	BALCONY AREA	TOTAL APT. AREA		
	XX06	ONE B.R. PENTHOUSE	64 SQFT	1,426 SQFT		

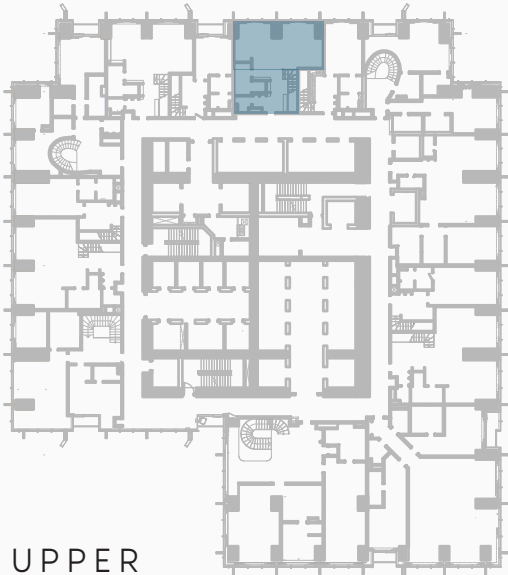
BUILDING NAME	REMARKS	<div> <div>BURJ AZIZI</div> <div>DUBAI</div> </div>
BURJ AZIZI		



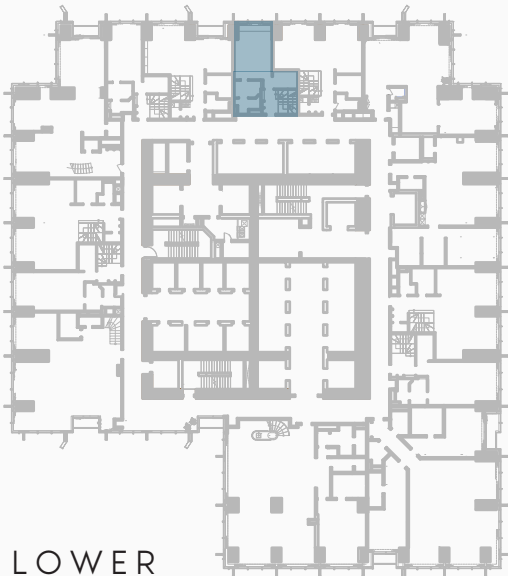
LOWER FLOOR



UPPER FLOOR



UPPER FLOOR



LOWER FLOOR



DISCLAIMER:

The marketing floor plans provided by the developer are for illustrative purposes only. Actual dimensions, layout, and finishes may vary from those depicted in the plans. Furniture shown in the plans are for decorative purposes only and are not included in the purchase of the property.

The developer reserves the right to make modifications, revisions, and changes to the floor plans, specifications and features without prior notice.

<div> <div></div> <div>AZIZI</div> </div>	PROJECT NAME	FLOOR NO.	APT. AREA	VIEW	PAGE NO.	DATE
	BURJ AZIZI	72-87	1,428 SQFT			
	APARTMENT NO.	UNIT TYPE	BALCONY AREA	TOTAL APT. AREA		
	XX07	ONE B.R. PENTHOUSE	-	1,428 SQFT		

BUILDING NAME	REMARKS	<div> <div>BURJ AZIZI</div> <div>DUBAI</div> </div>
BURJ AZIZI		

LOWER FLOOR

UPPER FLOOR

UPPER FLOOR

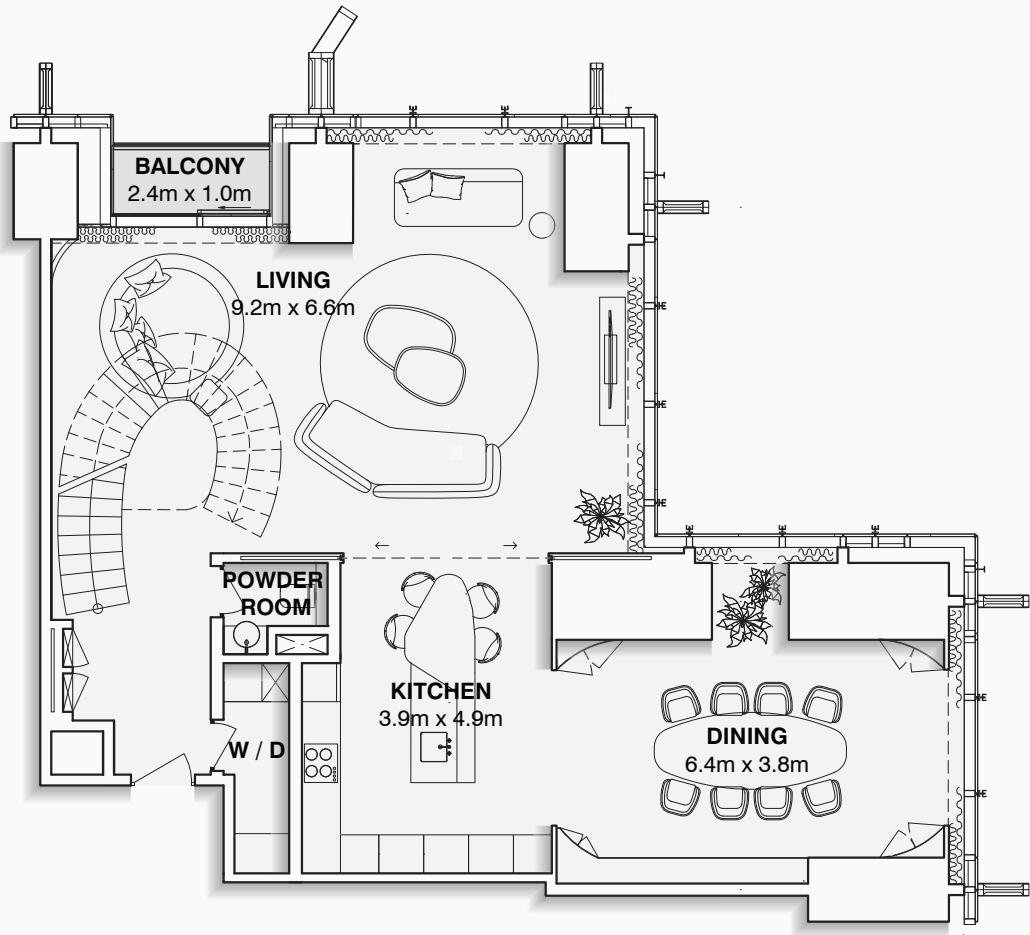
LOWER FLOOR

DISCLAIMER:

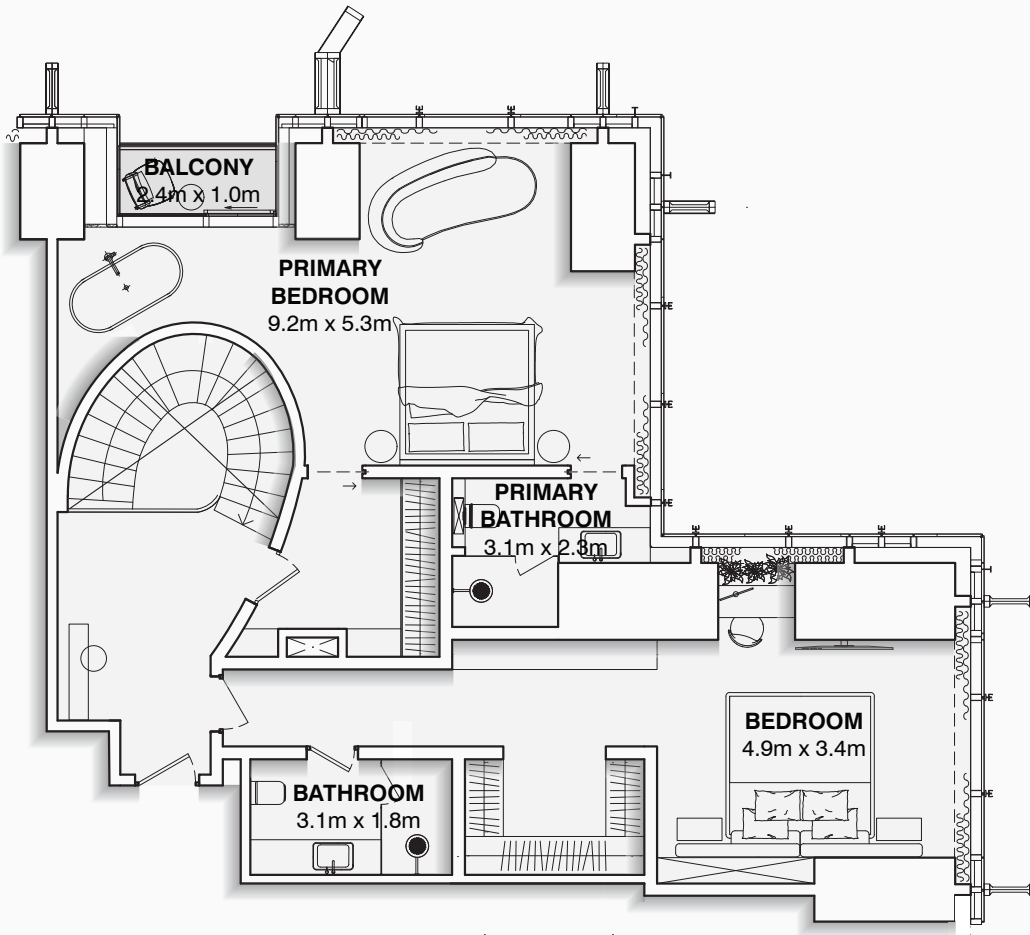
The marketing floor plans provided by the developer are for illustrative purposes only. Actual dimensions, layout, and finishes may vary from those depicted in the plans. Furniture shown in the plans are for decorative purposes only and are not included in the purchase of the property.

The developer reserves the right to make modifications, revisions, and changes to the floor plans, specifications and features without prior notice.

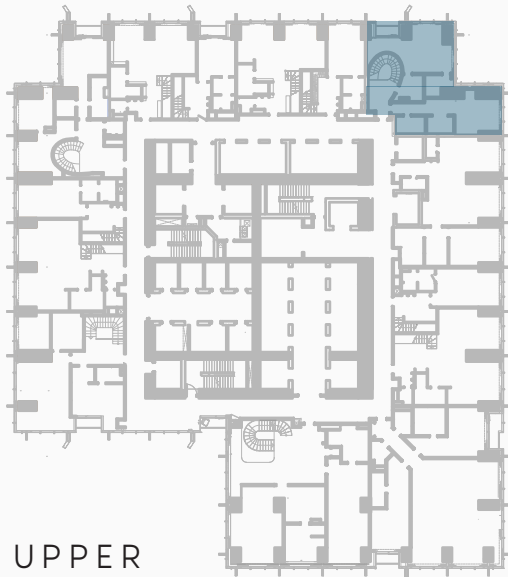
	PROJECT NAME	FLOOR NO.	APT. AREA	VIEW	PAGE NO.	DATE
	BURJ AZIZI	72-87	1,426 SQFT			
	APARTMENT NO.	UNIT TYPE	BALCONY AREA	TOTAL APT. AREA		
	XX08	ONE B.R. PENTHOUSE	-	1,426 SQFT		



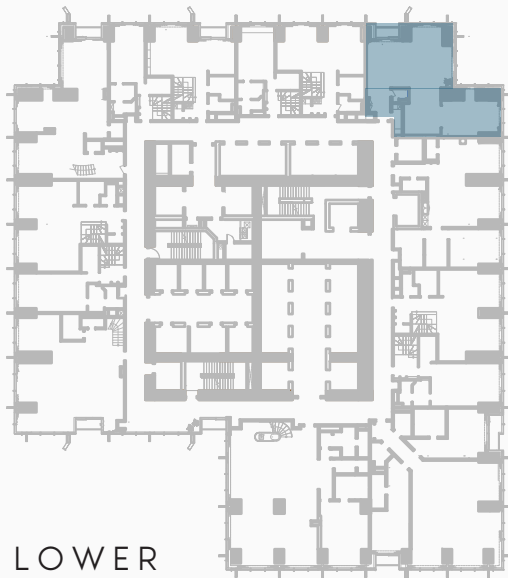
LOWER FLOOR



UPPER FLOOR



UPPER FLOOR



LOWER FLOOR

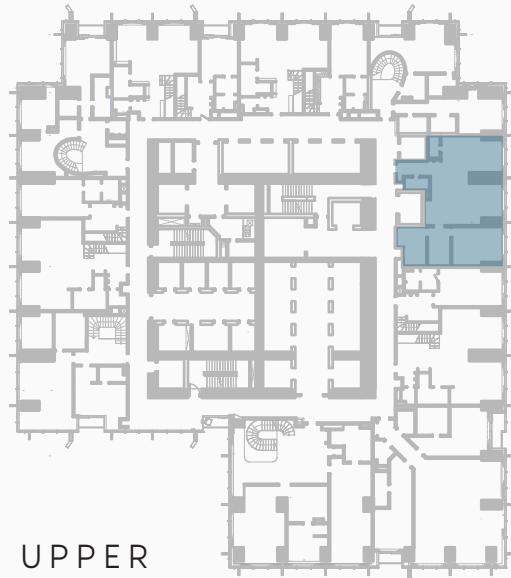
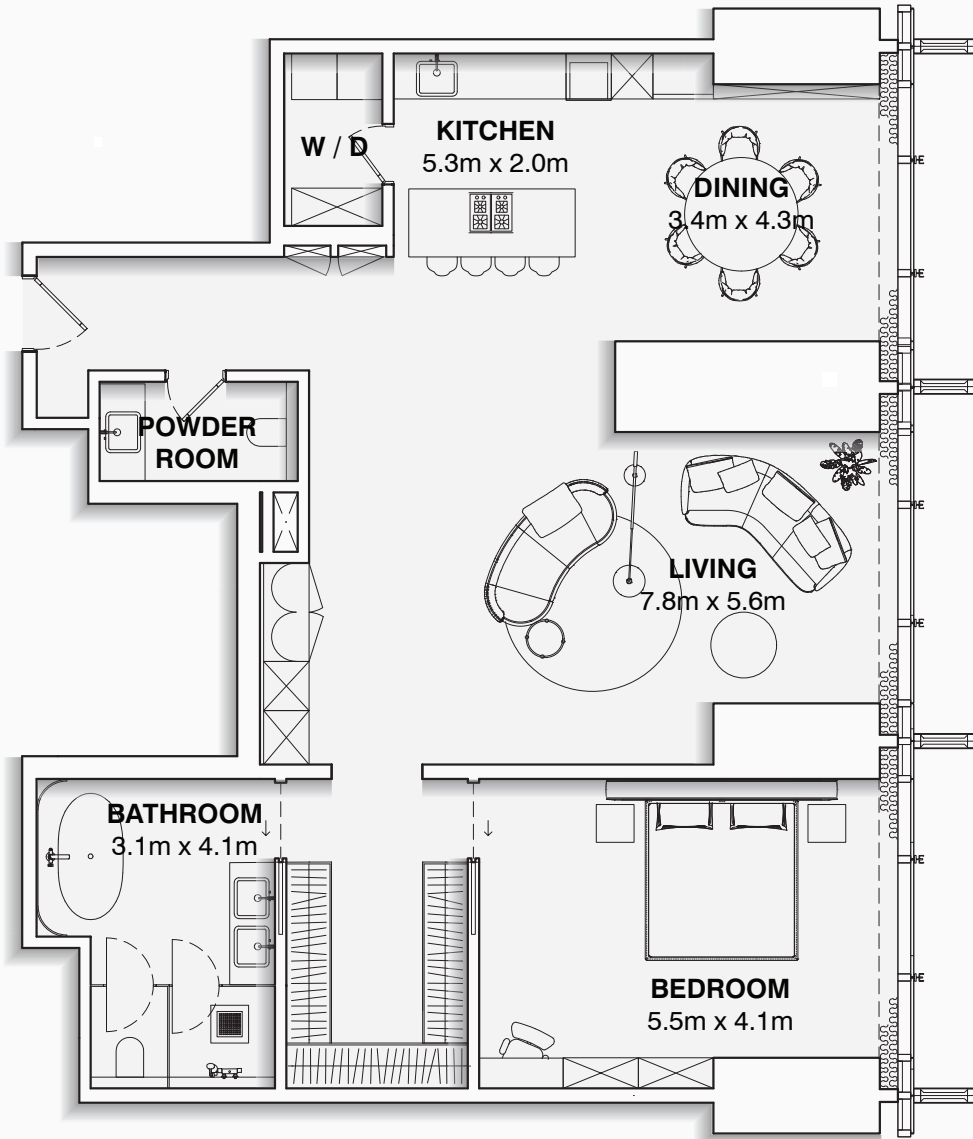


DISCLAIMER:

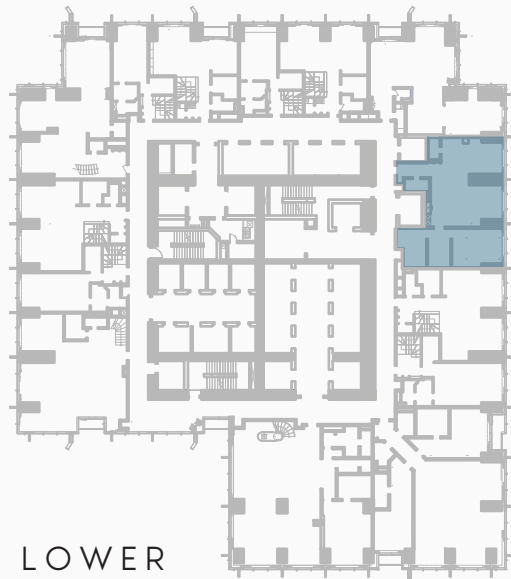
The marketing floor plans provided by the developer are for illustrative purposes only. Actual dimensions, layout, and finishes may vary from those depicted in the plans. Furniture shown in the plans are for decorative purposes only and are not included in the purchase of the property.

The developer reserves the right to make modifications, revisions, and changes to the floor plans, specifications and features without prior notice.

BUILDING NAME	REMARKS	<div>BURJ AZIZI</div> <div>DUBAI</div>
BURJ AZIZI		



UPPER FLOOR



LOWER FLOOR

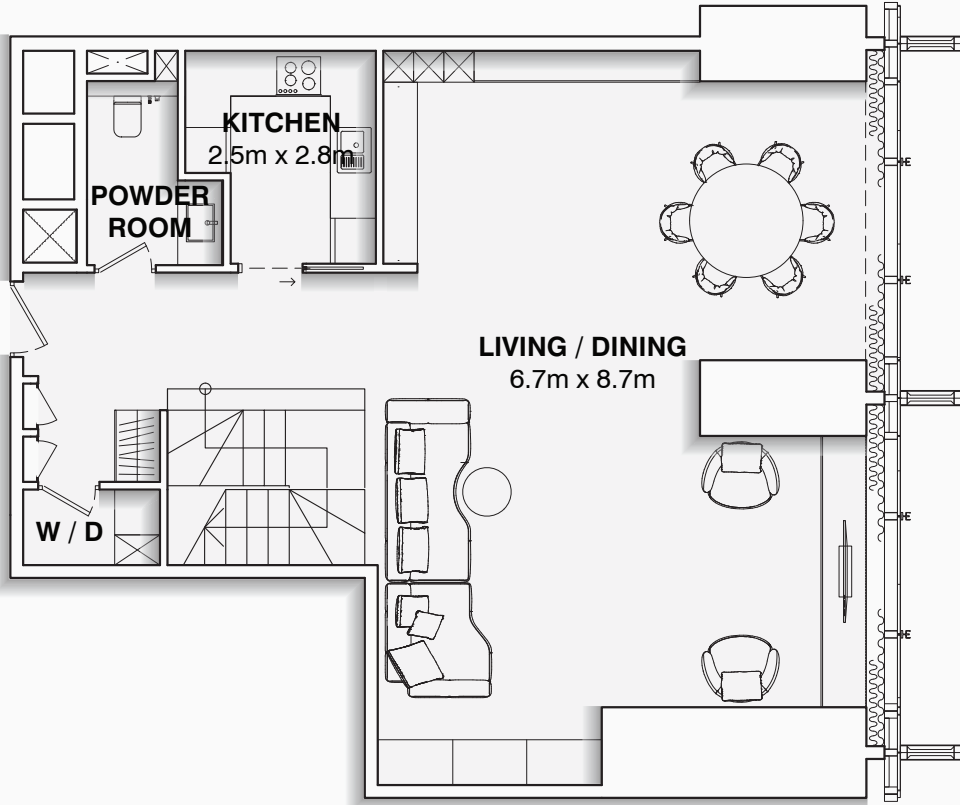


DISCLAIMER:

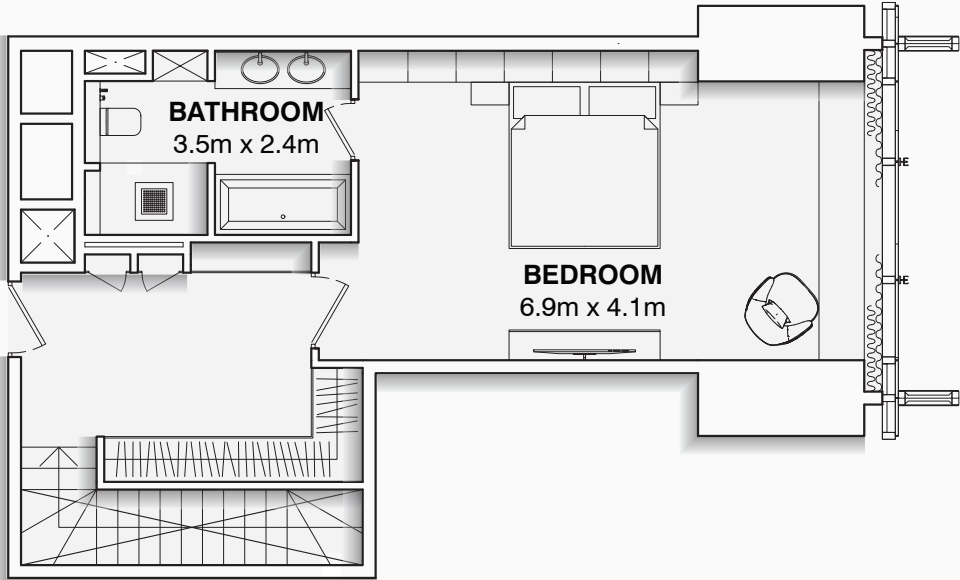
The marketing floor plans provided by the developer are for illustrative purposes only. Actual dimensions, layout, and finishes may vary from those depicted in the plans. Furniture shown in the plans are for decorative purposes only and are not included in the purchase of the property.

The developer reserves the right to make modifications, revisions, and changes to the floor plans, specifications and features without prior notice.

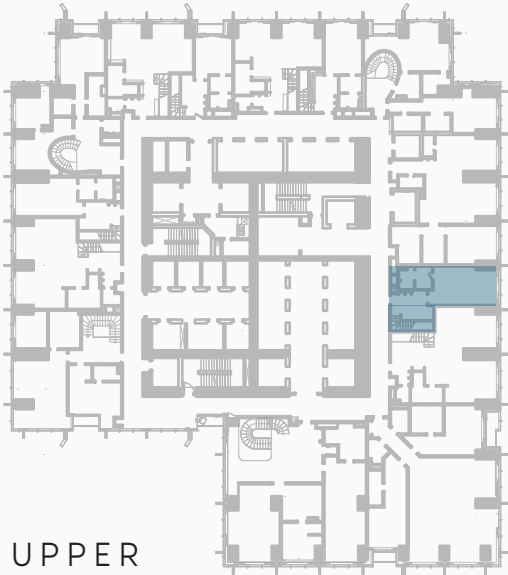
<div>AZIZI</div>	PROJECT NAME	FLOOR NO.	APT. AREA	VIEW	PAGE NO.	DATE
	BURJ AZIZI	72 - 87	1,504 SQFT			
	APARTMENT NO.	UNIT TYPE	BALCONY AREA	TOTAL APT. AREA		
	XX10	ONE B.R. PENTHOUSE	-	1,504 SQFT		



LOWER FLOOR



UPPER FLOOR



UPPER FLOOR



LOWER FLOOR

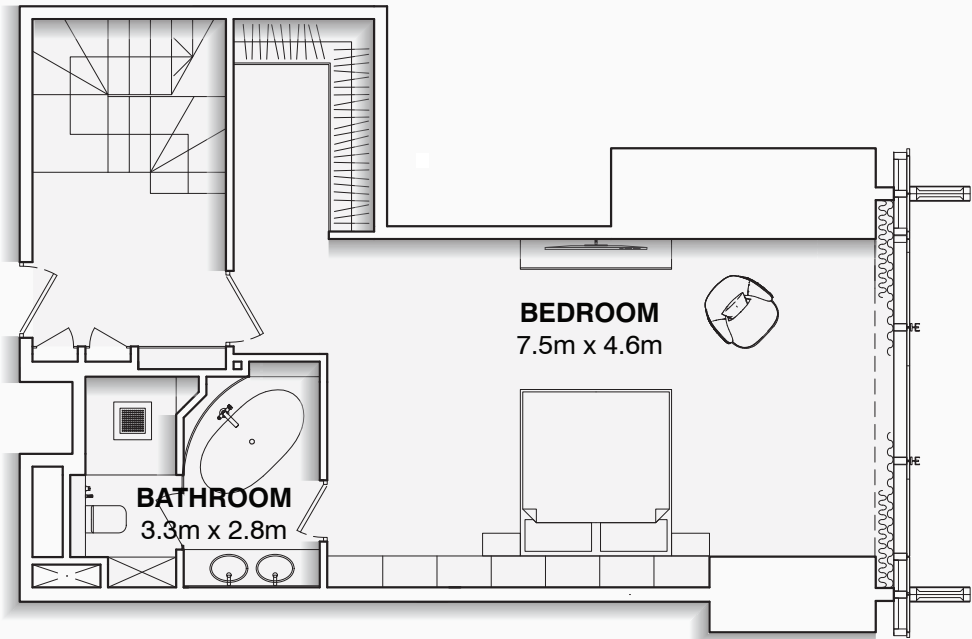


DISCLAIMER:

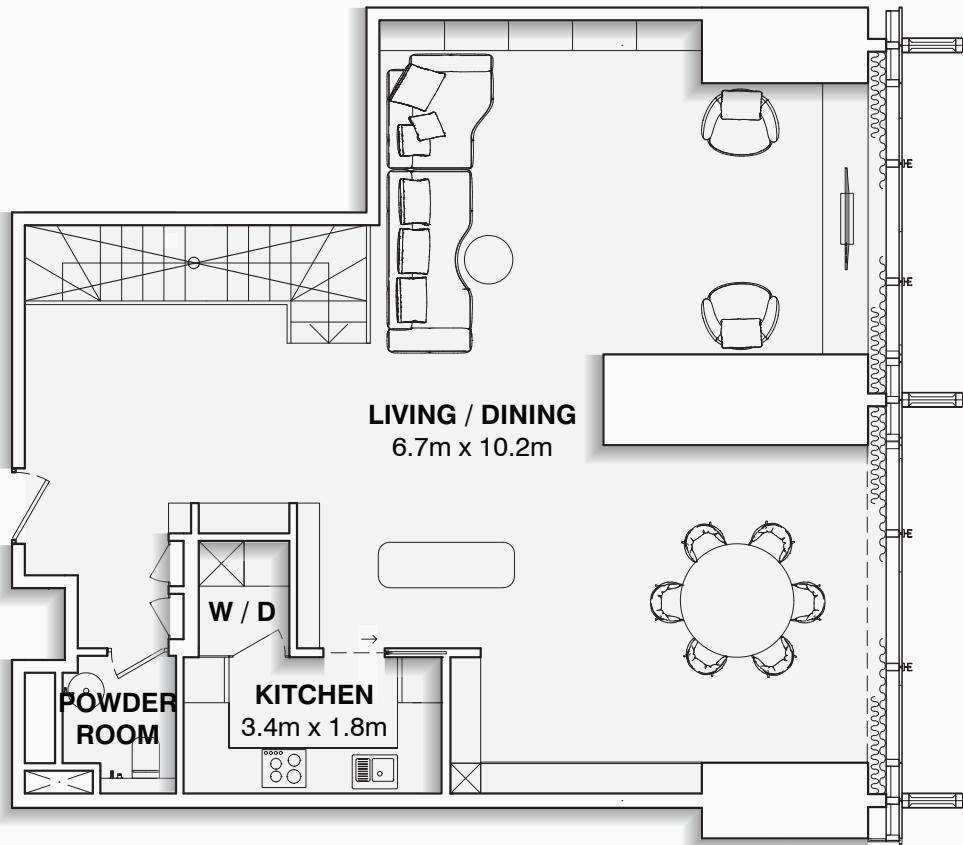
The marketing floor plans provided by the developer are for illustrative purposes only. Actual dimensions, layout, and finishes may vary from those depicted in the plans. Furniture shown in the plans are for decorative purposes only and are not included in the purchase of the property.

The developer reserves the right to make modifications, revisions, and changes to the floor plans, specifications and features without prior notice.

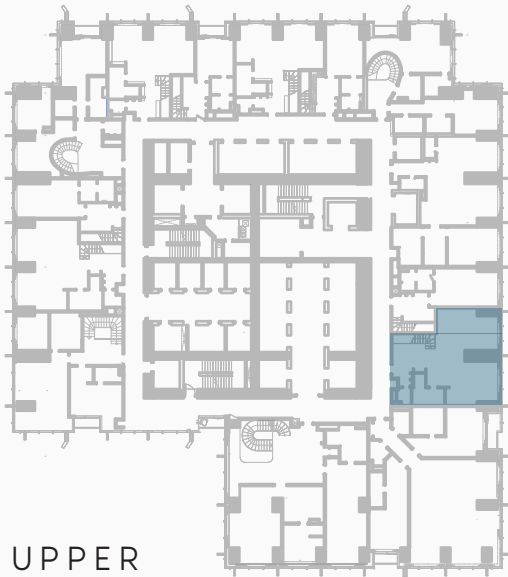
<div><div>AZIZI</div></div>	PROJECT NAME	FLOOR NO.	APT. AREA	VIEW	PAGE NO.	DATE
	BURJ AZIZI	72-87	1,698 SQFT			
	APARTMENT NO.	UNIT TYPE	BALCONY AREA	TOTAL APT. AREA		
	XX11	ONE B.R. PENTHOUSE	-	1,698 SQFT		



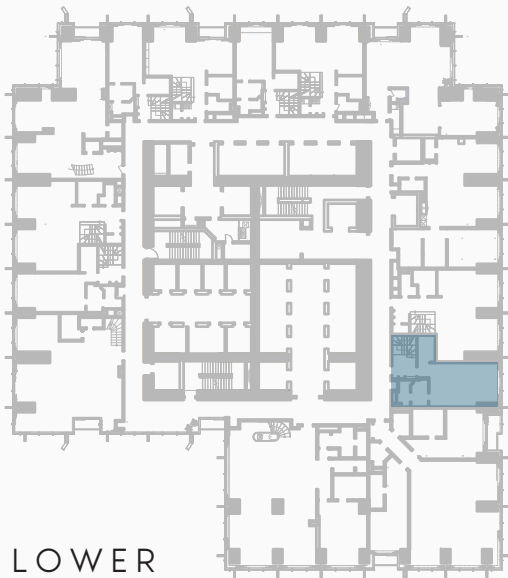
LOWER FLOOR



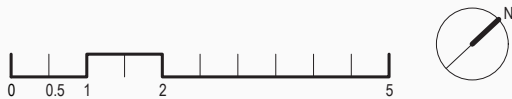
UPPER FLOOR



UPPER FLOOR



LOWER FLOOR



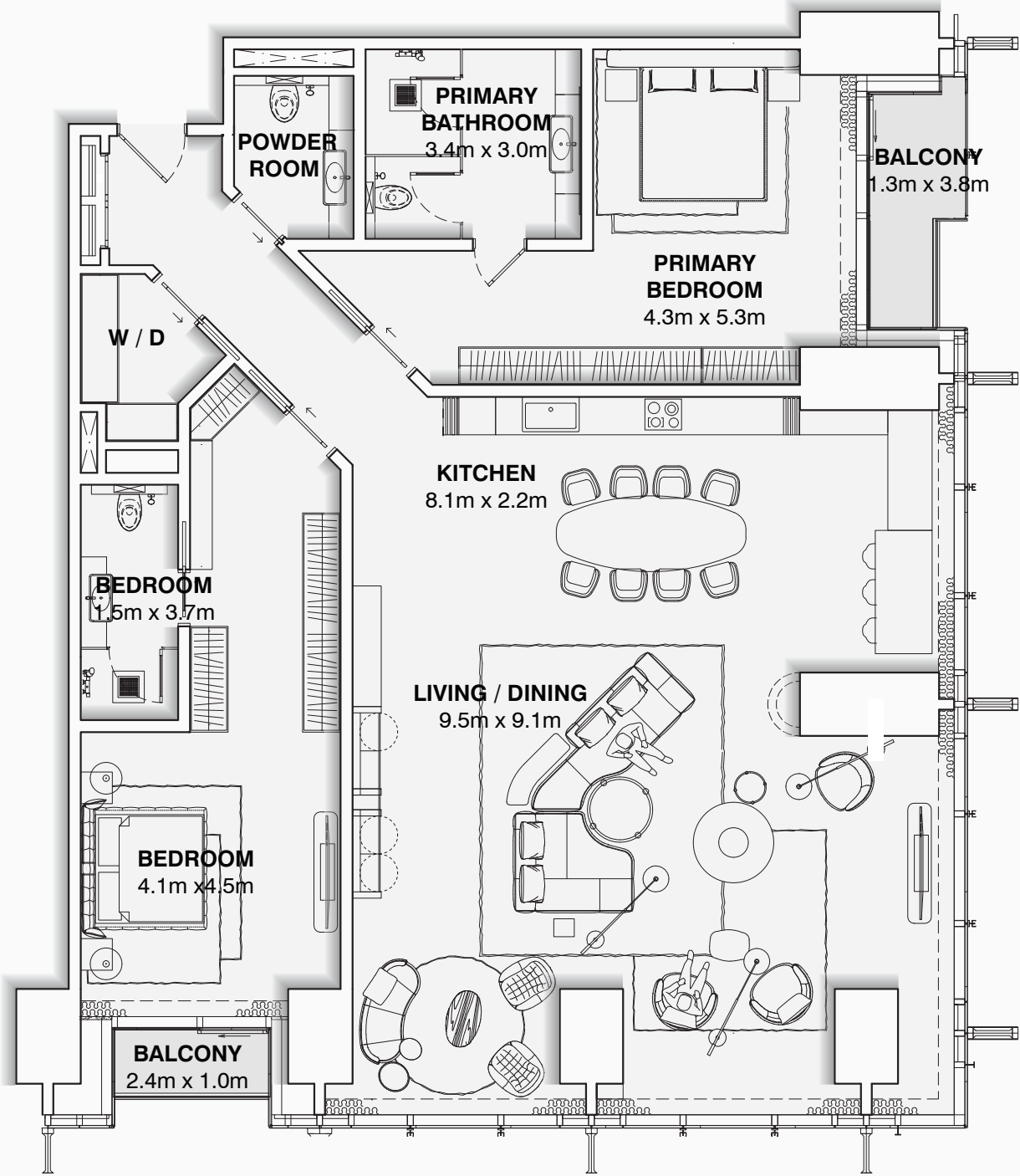
DISCLAIMER:

The marketing floor plans provided by the developer are for illustrative purposes only. Actual dimensions, layout, and finishes may vary from those depicted in the plans. Furniture shown in the plans are for decorative purposes only and are not included in the purchase of the property.

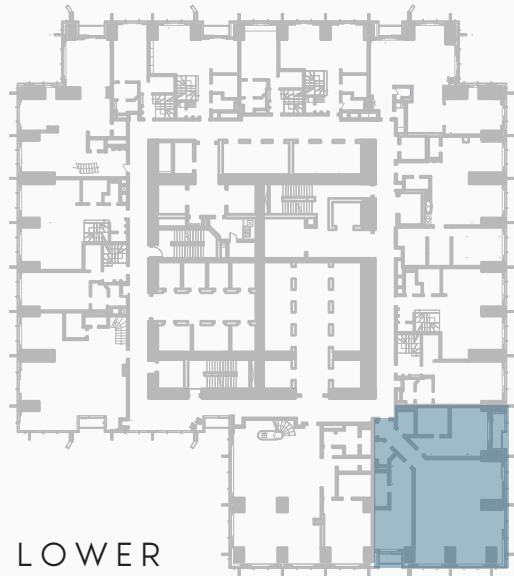
The developer reserves the right to make modifications, revisions, and changes to the floor plans, specifications and features without prior notice.

<div>AZIZI</div>	PROJECT NAME	FLOOR NO.	APT. AREA	VIEW	PAGE NO.	DATE
	BURJ AZIZI	72-87	1,884 SQFT			
	APARTMENT NO.	UNIT TYPE	BALCONY AREA	TOTAL APT. AREA		
	XX12	ONE B.R. PENTHOUSE	-	1,884 SQFT		

BUILDING NAME	REMARKS	<div>BURJ AZIZI</div> <div>DUBAI</div>
BURJ AZIZI		



UPPER FLOOR



LOWER FLOOR

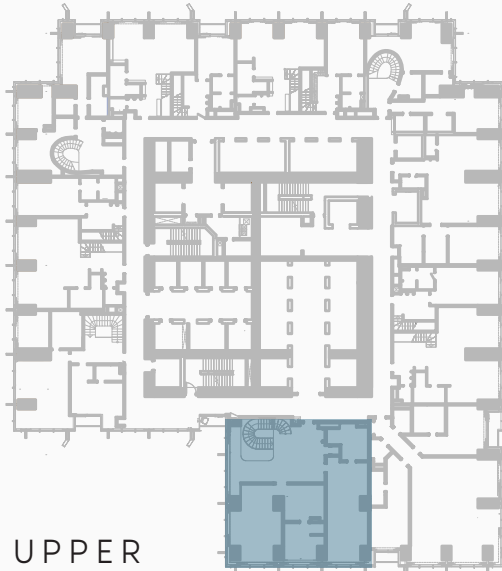
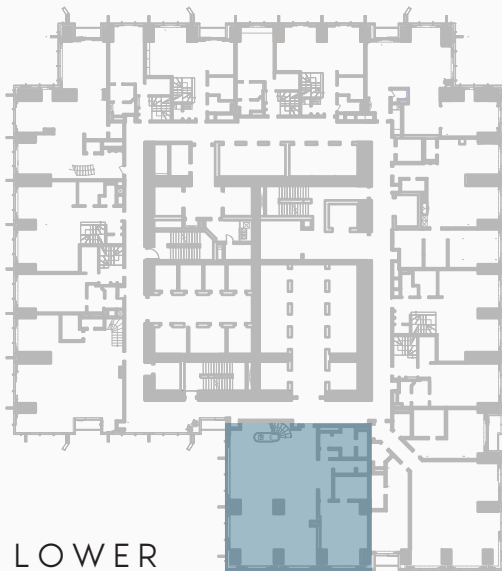





DISCLAIMER:

The marketing floor plans provided by the developer are for illustrative purposes only. Actual dimensions, layout, and finishes may vary from those depicted in the plans. Furniture shown in the plans are for decorative purposes only and are not included in the purchase of the property.

The developer reserves the right to make modifications, revisions, and changes to the floor plans, specifications and features without prior notice.

<div>AZIZI</div>	PROJECT NAME	FLOOR NO.	APT. AREA	VIEW	PAGE NO.	DATE
	BURJ AZIZI	72-87	2,448 SQFT			
	APARTMENT NO.	UNIT TYPE	BALCONY AREA	TOTAL APT. AREA		
	XX13	TWO B.R. PENTHOUSE	82 SQFT	2,530 SQFT		

BUILDING NAME		REMARKS		<div>BURJ AZIZI</div> <div>DUBAI</div>		<div></div> <div>UPPER FLOOR</div> <div></div> <div>LOWER FLOOR</div> <div><div></div><div></div></div> <div>DISCLAIMER:</div> <div><div>The marketing floor plans provided by the developer are for illustrative purposes only. Actual dimensions, layout, and finishes may vary from those depicted in the plans. Furniture shown in the plans are for decorative purposes only and are not included in the purchase of the property.</div><div>The developer reserves the right to make modifications, revisions, and changes to the floor plans, specifications and features without prior notice.</div></div>			
<div></div>		PROJECT NAME		FLOOR NO.		APT. AREA		VIEW	
		BURJ AZIZI		72-87		4,953 SQFT			
APARTMENT NO.		UNIT TYPE		BALCONY AREA		TOTAL APT. AREA		PAGE NO.	
XX14		THREE B.R. PENTHOUSE		-		4,953 SQFT		DATE	