



2019-2020



# GSE BOARDING SCHOOL LISTING

Global Student Exchange Inc.  
Building Relationships One Student  
At a Time.  
[www.gseinc.org](http://www.gseinc.org)



GLOBAL STUDENT EXCHANGE INC.  
MIDDLEBURG FL 32068-0859  
Building Relationships One Student at a Time.

Phone: 904-444-9633  
[www.gseinc.org](http://www.gseinc.org)

## BOARDING SCHOOLS

**BOARDING SCHOOL:** a private high school where you live on a beautiful residential campus with all of your classmates and teachers, study in small classes under the supervision of great teachers, and spend your afternoons and weekends immersed in exciting sports, extracurricular, and social activities. That's basically what a boarding school is. They are generally called "college preparatory" schools, and there are a number of features that set boarding schools apart from traditional public and even private schools.



Boarding Schools have an outstanding tradition of academic excellence, built on an educational model that delivers diverse curricula, taught by highly qualified and exceptionally motivated teachers, in small classes that encourage meaningful interaction with the students.

The following schools are just a sample of the schools we work with. Contact us for complete details at [tjgussie@gseinc.org](mailto:tjgussie@gseinc.org)

MN14SSM

Founded 1858

GENERAL INFO



GLOBAL STUDENT EXCHANGE INC.

MIDDLEBURG FL 32068-0859

Building Relationships One Student at a Time.

Phone: 904-444-9633

[www.gseinc.org](http://www.gseinc.org)



Our mission is to guide young people to be strong in character, mind, body, and spirit for a life of learning and service.

A dynamic diverse school community committed to excellence, integrity, and innovation here and beyond the arch.

With an average class size of 14, our students benefit from one-on-one attention, small-class discussion and reflection, and the opportunity to delve deeply into any subject. The curriculum includes Advanced Placement courses in 16 distinct subject areas. Online learning is also offered in a variety of subjects under the close supervision of faculty. The rigorous and engaging Upper School course curriculum prepares our students for entrance into some of the nation's top colleges and universities.

Almost all of our faculty members live on campus, many working as dorm parents, providing a rewarding mentor relationship, insight and supervision to our boarding students. The close-knit community of engaged individuals' leads to strong, enduring friendships, fosters an environment of acceptance, and a true sense of shared experience. Our international students, hailing from more than 30 countries, help our school community develop a greater understanding of the world.

Our Academic Centers of Excellence include the BioScience Program and the new Engineering Program. These programs have additional applications that are required for participation.



GLOBAL STUDENT EXCHANGE INC.

MIDDLEBURG FL 32068-0859

Building Relationships One Student at a Time.

Phone: 904-444-9633

[www.gseinc.org](http://www.gseinc.org)

- Gender: Co-Ed
- Grades: 6-12 **with a PG year offered**
- Teacher Student Ratio: 1:11
- Total Student Enrollment: Approx: 451
- Percentage International Students: 28%
- Percentage of graduates entering college: 100%
- Class Types Offered: AP - 16
- ESL: Avail (at additional cost)
- Accredited by: Independent Schools Association of the Central States (ISACS)



We believe a more meaningful experience for our students exists when the connection of the classroom experience is enhanced by increased student autonomy and when time is available for creative, mentored student-centered experiential learning. We also know that today's flat world requires that people develop the ability to work collaboratively, synthesize vast amounts of information, and work in a self-directed manner. As such, the academic and learning experience is being transformed into a blended learning model.

The school will continue the pilot of their Blended Learning Program in the Upper School. The goal of this program is to create an academic experience that includes rigorous college preparatory coursework; opportunities for independent research, internships, and creative projects; and development of twenty-first century skills. In 2012, our school was awarded a grant from the Edward E. Ford Foundation to support this effort. Our students will experience school differently; they will have all the benefits of our current academic program while preparing for the independence of the college experience, and they will have the opportunity to pursue an individualized scholastic project, such as:

- internship opportunities
- extended community service commitments
- independent research projects, including scientific research
- product development, collaborative problem solving, or independent projects in the weCreate center





GLOBAL STUDENT EXCHANGE INC.

MIDDLEBURG FL 32068-0859

Building Relationships One Student at a Time.

Phone: 904-444-9633

[www.gseinc.org](http://www.gseinc.org)

For each opportunity, students will have an advisor who will help design plans, monitor progress, and provide support and guidance.



This year, we have enrolled students from Barbados, Belarus, Cameroon, Canada, China, Costa Rica, Ethiopia, Finland, Germany, Ghana, Hong Kong, Japan, Philippines, S. Korea, Latvia, Macau, Mexico, New Zealand, Panama, Russia, Saudi Arabia, Spain, Sweden, Switzerland, Taiwan, Thailand, United Arab Emirates, Ukraine, and Vietnam.

Our boarding environment provides a unique experience for all students involved in the community. Learning to live independently, to interact in a close-knit community, and to problem-solve with a roommate are all skills that students cultivate during their time on campus. Meeting and befriending students of different backgrounds and cultures, visiting with teachers and their families over dinner, enjoying the historic campus setting and four distinct seasons: all of these elements combine to create an unforgettable, character-building boarding experience.





GLOBAL STUDENT EXCHANGE INC.

MIDDLEBURG FL 32068-0859

Building Relationships One Student at a Time.

Phone: 904-444-9633

[www.gseinc.org](http://www.gseinc.org)

## PA15MP

## Founded 1926

## GENERAL INFO



A four-year co-educational Catholic secondary school located atop a hill on a sprawling 7.25-acre campus that prepares students from all religious and ethnic backgrounds for a successful, productive, and compassionate life in an ever-changing and interdependent world.

We are northwest Pennsylvania's only Catholic International Baccalaureate School (grades 9-12), offering this prestigious educational opportunity to students from all over the world.

We strive for excellence in academic and co-curricular programs, we promote service to our local and global communities, and we foster the dedication and active support of the students, parents, faculty, staff, and alumni of the community.

With more than 1,000 years of teaching experience, our faculty is exceedingly qualified to prepare area youth for life beyond high school. More than 800 of those years of experience are tallied in the halls of our school; our faculty is passionate about its calling to guide young students to become the best persons they can be.

- Gender: Co-Ed
- Grades: 9-12
- Teacher Student Ratio: 1:14
- Total Student Enrollment: 545
- Percentage International Students: 15%
- Percentage of graduates entering college: 100%
- Class Types Offered: College Prep, Honors, IB – 15, Honors – 53
- Average SAT: 1979, Average ACT: 24
- **ESL: Available**
- Accredited by: Middle States Association of Colleges and Schools
- Opportunity to take college credit classes
- Able to complete their senior year and freshman year at local university simultaneously!



GLOBAL STUDENT EXCHANGE INC.

MIDDLEBURG FL 32068-0859

Building Relationships One Student at a Time.

Phone: 904-444-9633

[www.gseinc.org](http://www.gseinc.org)

### **Mission and Vision:**

As young men and women move beyond our school, they embody its mission and vision in the lives they lead. They move onward in diverse pursuits, each uniquely equipped with qualities, knowledge, and practices cultivated within these walls.

### **Integrity:**

The core quality toward which all graduates will continue to aspire is integrity. These young individuals seek integrity not only in the conventional sense of living by sound moral principles, but also in its broader sense as a state of being complete—wholeness of being.

### **The following are some great reason to attend our school:**

We are located in the geographic hub of the mid-Atlantic region equidistant from major cities such as; Cleveland, Buffalo, and Pittsburgh.

We are an IB World school; our Diploma program dates from 1985 making it one of the first IB Diploma schools in America.

An All I-Pad School – students are given an I-Pad when they enroll and then take it with them when they graduate.

**Students who wish to begin university course work or want to pursue a subject in greater depth enjoy a unique opportunity. Students can stroll down the hill and study at the adjacent university.**

The high school and the university campuses are adjoined by a short walkway, so both schools are easily accessible to each other either by driving or walking.

By the end of sophomore year, students can begin taking evening or summer classes for credit at the university. Our students are granted a very substantial tuition discount by the university for each course taken. The university grants full credit for such courses and will send a transcript of the student's work to the college of his/her choice.

Through our senior program, seniors have the opportunity to complete their senior year and their freshman year at the university simultaneously.



GLOBAL STUDENT EXCHANGE INC.

MIDDLEBURG FL 32068-0859

Building Relationships One Student at a Time.

Phone: 904-444-9633

[www.gseinc.org](http://www.gseinc.org)

Students who are recommended for the senior program work with both the high school and university counselors for selection of courses and may also be eligible for financial aid. This tremendous college opportunity while still in high school provides significant tuition savings with a jump start to earn a college degree in less than four years!

Our Labs (Design, Research, Engineering, Arts, and Math) are unique to our program. These labs were designed with the most forward thinking technology to benefit students across the curriculum and equip them with skills needed to compete in a world where technology is interwoven into every field and college major.

We offer 50 courses in the performing and visual arts taught by a faculty of active award-winning artists. The performing arts department has long been recognized as the top high school theater program in the region. Students exhibit and perform year-round in the school's nationally recognized musical theater, dance and choral groups.

### **College acceptance:**

Our graduates are currently attending:

**Notre Dame, Cornell University, University of Chicago, Brown, Columbia, Dartmouth, Vassar, College of William & Mary, Georgetown, Case Western, Harvard, U.S. Naval Academy, University of Michigan, Boston College, Rochester Institute of Technology, Villanova University, Johns Hopkins, MIT, among others.**

**Graduates from the class of 2012 have collectively been offered over \$12 million in scholarship monies.**







GLOBAL STUDENT EXCHANGE INC.  
MIDDLEBURG FL 32068-0859  
Building Relationships One Student at a Time.

Phone: 904-444-9633  
[www.gseinc.org](http://www.gseinc.org)

### **Boarding accommodations:**



Situated on a spectacular 65-acre Residence and Cultural campus in Pennsylvania located near three major US cities and easy to reach from around the world.

The Dorm is integral part of the high school experience and cultural hub for high school students in Pennsylvania, that serves as administrators for the international student and boarding program for the high school.

**Facilities remain open during all school breaks and holidays.** Our goal is to duplicate the living experiences of the top universities in America. This experience will make it easier for each student to prepare for the rich, bold and exciting time when they graduate and go onto college and universities.



### **Advantages of Dorm life:**

Companionship & Community Contacts: When you live in a dorm, it's hard to be lonely. There are always other students in the hallway looking for a friendly conversation. This is an easy opportunity to meet people and it can make the transition away from home easier.

We are a Wi-Fi Campus and provide private study rooms when required.

The staff is constantly arranging cultural and community events for each student to develop these skills. In addition, we offer special leisure and sports activities in conjunction with normal schooling. These are very popular as they help students overcome homesickness which sets in at the beginning.



GLOBAL STUDENT EXCHANGE INC.

MIDDLEBURG FL 32068-0859

Building Relationships One Student at a Time.

Phone: 904-444-9633

[www.gseinc.org](http://www.gseinc.org)

**Convenience:** Our Dorm campus is located very close to major shopping malls and restaurants. **The Dorm is open 24/7 year-round**, an important distinction for international students. In addition, our athletic facilities are located on the residential campus including a state-of-the-art fitness center and student lounge/hub. We also provide bus and transportation service for every student to school, for cultural events, and for shopping.

Sponsor excursions to local points of interest as well as activities throughout the year for the boarding students.

**Safety & 24-Hour Care:** Our Dorm is a secure environment that has cameras, fire and smoke detectors along with adult supervision. Our security is provided 24/7. Our advisers are a source of knowledge and sometimes even a friend. Dorm parents and dorm administrators live full time on campus. The continuous cooperation between the school, boarding house staff, educators, teachers and students enables an excellent symbiosis in their efforts to achieve success in learning.

**Delightful Eating Experience:** We provide a variety of daily meals that are healthy and fresh. In addition, we have an International Fusion chef that prepares international dishes to everyone's delight. Our Executive Chef is third generation.

**Excellent Medical Care:** We work with one of the top medical care providers in America, University of Pittsburgh Medical Center (UPMC) to insure the best healthcare for each student. We work together to provide prompt medical care for minor illnesses or injuries for each student. Their medical center is staffed with board certified physicians that strive to provide excellent medical care.





GLOBAL STUDENT EXCHANGE INC.  
MIDDLEBURG FL 32068-0859  
Building Relationships One Student at a Time.

Phone: 904-444-9633  
[www.gseinc.org](http://www.gseinc.org)

### **Amenities at Residential Facility and Campus:**

Music Room  
Study Room  
Fitness Gym  
TV and Internet Common Areas  
Cultural Game Rooms  
Dining Hall

Study Rooms  
Group Project Rooms  
Four Basketball Courts  
Golf Driving Range - Indoor  
Physical Rehab on Campus

International Student Tuition includes following:

- Tuition
- Certified teacher to oversee Study Hall
- Student health insurance
- Starter school uniform
- Housing with only two students per room
- Transportation to & from the International Airport for Fall arrival and end of year departure
- Food service with home cooked meals
- State of the Art Fitness Center
- Wireless internet service
- Weekly shopping excursions
- Student lounge

The non-refundable application fee must be wired for each application.

Uniforms are required at all times and will be purchased by the student upon arrival.

The school and boarding accommodations deliver tremendous value in education with the most reasonable cost of any IB boarding school in America. This school is **all inclusive**.



GLOBAL STUDENT EXCHANGE INC.  
MIDDLEBURG FL 32068-0859  
Building Relationships One Student at a Time.

Phone: 904-444-9633  
[www.gseinc.org](http://www.gseinc.org)

## PA13LM

## FOUNDED 1942

## GENERAL INFO



A PreK-12 comprehensive education in a nurturing and diverse environment that prepares students to be lifelong learners that, in addition to providing a quality college-prep program with Advanced Placement classes, offers classes in Technology Education, Family and Consumer Sciences, Agricultural Sciences, and Business Education—all within well-maintained facilities that encourage learning. Teachers provide academic support and challenge while guiding and encouraging students to develop their gifts and discover their calling. The school values teachers who invite students to transformational growth within the context of the local, national and global communities.

A diverse, multicultural environment that is welcoming, safe, trusting and respectful is an important component of the educational process. Our school attracts and serves international students from countries such as Ethiopia, Japan, Singapore, Taiwan, China, South Korea, Thailand, Indonesia and the Philippines.

As a private school on the east coast of the USA, the residential program (dormitory or boarding program) is an important part, providing a "home away from home" for international students.







GLOBAL STUDENT EXCHANGE INC.

MIDDLEBURG FL 32068-0859

Building Relationships One Student at a Time.

Phone: 904-444-9633

[www.gseinc.org](http://www.gseinc.org)

- Gender: Co-ed
- Grades: 6-12
- Teacher Student Ratio: 1:16
- Total Students: Approx: 786
- Percentage International Students: 20%
- Percentage of graduates entering college: 100%
- AVG SAT: 1692
- Class Types Offered: College Prep, AP - 13
- ESL: Available
- Accredited by: Middle States Association of Colleges & Schools



**Application Deadline: Rolling**



GLOBAL STUDENT EXCHANGE INC.  
MIDDLEBURG FL 32068-0859  
Building Relationships One Student at a Time.

Phone: 904-444-9633  
[www.gseinc.org](http://www.gseinc.org)

## NY12HA

## FOUNDED 1883

## GENERAL INFO



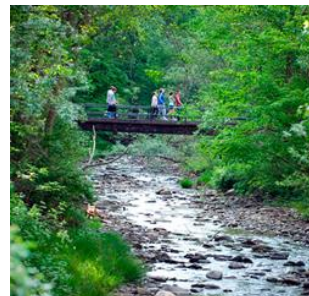
A Christian college prep boarding and day school, located in beautiful upstate New York, we describe our program as having a three-fold emphasis on head, heart and hands. We seek to supply core knowledge, allow knowledge to be informed by faith, and then encourage students to put their knowledge and faith into action. To that end, we offer more than academic coursework. We encourage our students to get involved in sports or music or drama or art or publishing as we believe that good education should encompass more than just books and information.

Since 1883 our vision has been to teach and nurture its students so that each young person understands the need for a personal commitment to Christ; comprehends the importance of a life of service; grows toward a mature understanding of our society, history, and natural worlds; develops in physical ability and strength, and exhibits appropriate social courtesies. This vision is best realized through the faithful service of mature Christians who model and teach these values.



### **What kind of high school do you want?**

- a high school with a long history of stability and success
- a boarding and day school full of motivated, capable students



### **If you are looking for...**

- a high rate of college placement and with excellent preparation for college—with both knowledge and practical "college survival skills"
- a safe environment



GLOBAL STUDENT EXCHANGE INC.

MIDDLEBURG FL 32068-0859

Building Relationships One Student at a Time.

Phone: 904-444-9633

[www.gseinc.org](http://www.gseinc.org)

- a small academy where you will be well-known and cared for
- a school with opportunities for sports, music, drama and other extra-curricular activities
- an accredited school
- a school with good facilities
- a school with a seasoned, experienced faculty and staff
- a boarding school with a full-residential program

### THEN LOOK NO FURTHER!

Students come from down the street, across town, from the next county, from states too-distant to drive to, and from countries the world over.

Academy students choose to come because we offer a positive school community of motivated students making healthy lifestyle choices.



- Gender: Co-ed
- Grades: 6 - 12
- Teacher Student Ratio: 1:6
- Total Student Enrollment: Approx 145
- Percentage International Students: Less than 5%
- Percentage of graduates entering college: 94%
- ESL: Not available. English Proficiency preferred\*
- Class Types Offered: College Prep, Honor -1, AP -5
- AVG. SAT Score: 1564
- **ENGLISH PROFICIENCY TEST: NOT REQUIRED**
- Accredited by: Association of Christian Schools International (ACSI), Association of Boarding Schools (TABS), National Association of Independent Schools (NAIS) Middle States Association of Colleges and Schools (MSCSA)



GLOBAL STUDENT EXCHANGE INC.  
MIDDLEBURG FL 32068-0859  
Building Relationships One Student at a Time.

Phone: 904-444-9633  
[www.gseinc.org](http://www.gseinc.org)



\*Tutoring available at a cost per hour.

Educational Support: College placement, high school guidance, academic tutoring, ELL and TO EFL classes, SAT preparation



## Student & Residential Life

School life does not begin and end in the classroom.

Dorm life is an important component of a boarding student's experience. Additional activities can be classified as both structured or unstructured.

One of the more popular structured activities is interscholastic athletics. Joining a sport's team is not only a lot of fun, but it allows students to practice some of their life-lessons in the crucible of





GLOBAL STUDENT EXCHANGE INC.

MIDDLEBURG FL 32068-0859

Building Relationships One Student at a Time.

Phone: 904-444-9633

[www.gseinc.org](http://www.gseinc.org)

competition. Some students enjoy music or drama; many of the opportunities in these areas are also structured, falling under the purview of the Music Department. Our Ski Club is very popular, and makes weekly visits to a local resort during the winter months (weather permitting).

Unstructured activities include many opportunities in the outdoors, such as cross-country skiing, hiking, biking, or hunting. The village also offers many avenues to volunteer in service to others; through the years, both the nursing home and the church have engaged altruistically-minded students. The academy supports but does not always organize these efforts.

## Boarding and General Facilities

Academy utilizes four boarding facilities.

All residential students should plan on living with a roommate.

Students who find it difficult to get home for vacations may sign up in advance for a home stay with day students, faculty/staff, or community members for an additional fee.

For students' medical needs, the nurse's station is located in the Academy academic complex, and a registered nurse is on call 24 hours a day. The school doctor is located five minutes away.

## Athletics and Athletic Facilities



All students are encouraged but not required to participate in interscholastic or intramural sports or to join the Academy Ski Club. Located in the snow country of western New York, Academy students are able to take advantage of a long downhill skiing season through the Academy Ski Club. Ski Club goes almost weekly to a nearby ski resort where students enjoy both skiing and snowboarding.

Academy interscholastic sports include boys' soccer, girls' volleyball, boys' and girls' basketball, cheerleading, co-ed track and field, and co-ed tennis.



GLOBAL STUDENT EXCHANGE INC.

MIDDLEBURG FL 32068-0859

Building Relationships One Student at a Time.

Phone: 904-444-9633

[www.gseinc.org](http://www.gseinc.org)

On-campus sports facilities include a soccer field and a multi-purpose gym. Academy students also have access to the athletic facilities at nearby Houghton College which include indoor and outdoor tracks, indoor and outdoor tennis courts, racquetball courts, a large gymnasium, fitness center, weight room, climbing wall, an Olympic-size indoor pool, miles of cross-country ski trails, and a ski slope. The college also has a large Equestrian program.

## Universities and Colleges Accepting Our Graduates

Academy graduates have been accepted at a variety of public and private colleges in North America. Here are some of them from the past five years:

Adelphi University  
Albany College of  
Pharmacy and Health  
Sciences  
Alfred State College  
Alfred University  
Allegheny College  
American International  
College  
Anderson University  
Arcadia University  
Arizona State University  
Art Institute of Seattle  
Austin College  
Baylor University  
Belmont College  
Belmont University  
Bentley University  
Binghamton University,  
State University of New  
York  
Blinn College Brenham  
Bloomsburg University of  
Pennsylvania  
Bowling Green State  
University  
Buffalo State, The State  
University of New York

Calvin College  
Canisius College  
Case Western Reserve  
University  
Cazenovia College  
Cedarville University  
Chicago State University  
College of the Albemarle  
Dare County  
College of the Holy Cross  
Cornell University  
Creighton University  
Daemen College  
Davis College  
Denison University  
DePaul University  
Dickinson College  
Drexel University  
D'Youville College  
Eastern Florida State  
College  
Eastern University  
Elmira College  
Emerson College  
Florida Institute of  
Technology  
Florida Southern College  
Florida State University

Fordham University  
Geneva College  
George Mason University  
Georgetown University  
Georgia Institute of  
Technology  
Gonzaga University  
Gordon College  
Grand Canyon University  
Grove City College  
Hofstra University  
Hood College  
Houghton College  
Indian River State College  
Indiana University at  
Bloomington  
Indiana University of  
Pennsylvania  
Indiana Wesleyan  
University  
Iowa State University  
Irvine Valley College  
John Brown University  
Johnson and Wales  
University  
Johnson and Wales  
University North Miami  
King's College



GLOBAL STUDENT EXCHANGE INC.

MIDDLEBURG FL 32068-0859

Building Relationships One Student at a Time.

Phone: 904-444-9633

[www.gseinc.org](http://www.gseinc.org)

LaSalle University  
Lancaster Bible College  
Le Moyne College  
Lehigh University  
LeTourneau University  
Liberty University  
Long Island University  
Post  
Loyola University Chicago  
Lyon College  
Malone University  
Manhattanville College  
Messiah College  
Miami University  
Michigan State University  
Middlebury College  
Missouri University of  
Science and Technology  
Monroe College  
Montana State University  
Montgomery College  
Rockville  
Nazareth College  
New York Institute of  
Technology  
North Park University  
Northeastern University  
Nyack College  
Ohio Technical College  
Ohio University  
Pace University  
Paul Smith's College  
Pennsylvania State  
University  
Pennsylvanis State  
University Altoona  
Pittsburg State University  
Purdue University  
Rider University  
Lawrenceville

Robert Morris University  
Roberts Wesleyan College  
Rochester Institute of  
Technology  
Rutgers University  
Camden  
Rutgers University-New  
Brunswick  
Saint Joseph's University  
Seattle Central College  
Seattle University  
Seton Hall University  
Southern Methodist  
University  
Southern New Hampshire  
University  
St. Bonaventure University  
St. John Fisher College  
St. John's University  
State University of New  
York at Geneseo  
Stony Brook University  
Suffolk University  
SUNY Adirondack  
Queensbury  
SUNY College of  
Environmental Science and  
Forestry  
SUNY Morrisville  
Susquehanna University  
Syracuse University  
Taylor University  
Temple University  
Texas A & M University  
The College at Brockport,  
State University of New  
York  
The College of William  
and Mary

The Culinary Institute of  
America  
The Ohio State University  
The Ohio State University  
Agricultural Technical  
Institute  
The University of Arizona  
The University of Iowa  
The University of Kansas  
The University of Rhode  
Island  
The University of Tampa  
The University of Toledo  
The University of Utah  
The University of Vermont  
Toccoa Falls College  
Trocaire College  
UMass Amherst Mount Ida  
Campus  
University at Albany, State  
University of New York  
University at Buffalo, State  
University of New York  
University of Bridgeport  
University of California  
Berkeley  
University of California  
Davis  
University of California  
Irvine  
University of California  
Los Angeles  
University of California  
Riverside  
University of California  
San Diego  
University of California  
Santa Barbara  
University of California  
Santa Cruz



GLOBAL STUDENT EXCHANGE INC.

MIDDLEBURG FL 32068-0859

Building Relationships One Student at a Time.

Phone: 904-444-9633

[www.gseinc.org](http://www.gseinc.org)

University of Charleston  
University of Colorado at  
Boulder  
University of Connecticut  
University of Delaware  
University of Denver  
University of Idaho  
University of Illinois at  
Urbana-Champaign  
University of Maine  
University of  
Massachusetts Amherst  
University of  
Massachusetts Boston  
University of Miami

University of Michigan  
University of Michigan  
Flint  
University of Minnesota  
Twin Cities  
University of Nebraska  
Lincoln  
University of Oregon  
University of Pittsburgh  
Bradford  
University of Richmond  
University of Rochester  
University of San  
Francisco  
University of Washington

Virginia Commonwealth  
University  
Virginia Polytechnic  
Institute and State  
University  
Washington College  
Washington State  
University  
Wentworth Institute of  
Technology  
Westmont College  
Wheaton College  
Williams College  
Xavier University

\*Boldface denotes matriculation to college/university





GLOBAL STUDENT EXCHANGE INC.  
MIDDLEBURG FL 32068-0859  
Building Relationships One Student at a Time.

Phone: 904-444-9633  
[www.gseinc.org](http://www.gseinc.org)

**PA12PS**

**Founded 1875**

**GENERAL INFO**



Our Students learn through experience and active inquiry. Each student is challenged to excel academically. Students are exposed to new ideas and to friendships spanning differing races, socio-economic groups, religions, interests, and learning styles; thus, preparing them for a competitive world.

Our faculty members are academically talented, with a passion to connect with and challenge students to discover their individual strengths and to develop their greatest potential.

Our program has always been and always will be about changing lives. We are committed to creating experiences that will prepare our students to excel in college and life in a world community.

Our community of staff, alumni, families, and friends are dedicated to nurturing relationships in an unshakable partnership with the school for the best interest of the student.

Our Campus is an inviting, safe home that inspires a sense of community and belonging.



GLOBAL STUDENT EXCHANGE INC.

MIDDLEBURG FL 32068-0859

Building Relationships One Student at a Time.

Phone: 904-444-9633

[www.gseinc.org](http://www.gseinc.org)

- Gender: Co-Ed
- Grades: 6-12
- Teacher Student Ratio: 1:7
- Total Student Enrollment: Approx: 325
- Percentage International Students: Less than 30%
- Percentage of graduates entering college: 100%
- Class Types Offered: Honors – 8, AP - 27
- ESL: Avail (at additional cost)
- Accredited by: Middle States Association of Colleges and Schools, Member: National Association of Independent Schools (NAIS), The Association of Boarding Schools, The College Board, and The National Association of College Admissions Counselors.

**Application Deadline: 1 February with rolling admission afterward**





GLOBAL STUDENT EXCHANGE INC.  
MIDDLEBURG FL 32068-0859  
Building Relationships One Student at a Time.

Phone: 904-444-9633  
[www.gseinc.org](http://www.gseinc.org)

**KY140B**

**Founded 1899**

**GENERAL INFO**



A private boarding and day high school with a curriculum designed to meet the needs of students with ability levels ranging from below-average to exceptional. We have a unique Tutoring Lab for students with low reading and/or math skills.

We provide English as a Second Language (ESL) for our international students and advanced placement courses for students with above-average ability.

The school year is divided into four nine-week quarters. Progress reports or report cards are mailed to parents every four and one-half weeks.

Boarding students are required to attend a supervised study hall each evening, Monday-Thursday. Students who make honor status are excused from study hall.

We have never required that students or their families be Baptist or even Christian. In fact, many of our students do not profess to be Christians when they enroll. We respect the right of each young person to make his/her own decisions. Approximately 50% of our students come from Kentucky. Another 30 % are from other states in the U.S. International students comprise 20% of our enrollment.





GLOBAL STUDENT EXCHANGE INC.

MIDDLEBURG FL 32068-0859

Building Relationships One Student at a Time.

Phone: 904-444-9633

[www.gseinc.org](http://www.gseinc.org)

Our dress code is NOT a school uniform, but it is very strict.



We have two dormitories for boys and one for girls. Each air-conditioned dorm is supervised 24 hours a day by house parents.



House parents are stationed throughout the dorms and in the dorm office where students have access to telephones, microwaves, television and basic supply needs.

There are generally three students to a room. All students are responsible for cleaning their dorm rooms each day. There are bathrooms on each dormitory floor, and students have access to full laundry facilities.

Our cafeteria serves three meals a day, seven days a week. Meals are served buffet-style, and while students are limited to taking one serving per trip, they are allowed to return for more.

The campus grill, where students may purchase fast food items and socialize with friends, is open in the afternoons Monday-Saturday.





GLOBAL STUDENT EXCHANGE INC.

MIDDLEBURG FL 32068-0859

Building Relationships One Student at a Time.

Phone: 904-444-9633

[www.gseinc.org](http://www.gseinc.org)

- Gender: Co-ed
- Grades: 6-12
- Teacher Student Ratio: 1:6
- Total Students: Approx: 325
- Percentage International Students: 20%
- AVG ACT: 22
- Class Types Offered: College Prep, Honors-7, AP-6,
- ESL : Available
- Accredited by: National Non-Public School Commission, Kentucky Department of Education



**ALL funds must be paid in full prior to issuance of the I-20.**

## **Rolling Admission**





GLOBAL STUDENT EXCHANGE INC.  
MIDDLEBURG FL 32068-0859  
Building Relationships One Student at a Time.

Phone: 904-444-9633  
[www.gseinc.org](http://www.gseinc.org)

## AL13BP

## FOUNDED 1891

## GENERAL INFO



Our school is a private co-educational boarding school for grades 7-12 located on a beautiful, serene and secure 800-acre campus. We are committed to fully engage students in learning for the whole person-mind, body, and spirit. We pursue this mission through instruction in the classroom; participation in religious, social and athletic events; and involvement in mentoring and community service activities. Through guidance and encouragement students become intellectually curious and objective thinkers. They are more adaptable and receptive to new situations and challenges and are more likely to become socially responsible members of society.

We seek students that want to prepare for college or university studies and who are academically capable of excelling through standard college preparatory (CP) instructional and testing methods. The school challenges students through academic excellence, Advance Placement (AP) courses and rigorous test preparation.

- Gender: Co-ed
- Grades: 7-12
- Teacher Student Ratio: 1:12
- Total Students: Approx: 180
- Percentage International Students: 10%
- Percentage of graduates entering college: 100%
- AVG SAT: 1800, ACT: 23
- Class Types Offered: College Prep, AP-4, Fine Arts
- ESL : Available as necessary
- Accredited by: Southern Association of Colleges & Schools, Southern Association of Independent Schools, The Association of Boarding Schools



GLOBAL STUDENT EXCHANGE INC.  
MIDDLEBURG FL 32068-0859  
Building Relationships One Student at a Time.

Phone: 904-444-9633  
[www.gseinc.org](http://www.gseinc.org)



**Application Deadline: Rolling**







GLOBAL STUDENT EXCHANGE INC.  
MIDDLEBURG FL 32068-0859  
Building Relationships One Student at a Time.

Phone: 904-444-9633  
[www.gseinc.org](http://www.gseinc.org)

## SC12KO

## FOUNDED 1909

## GENERAL INFO



Our mission: To produce educated women who are independent, ethically responsible, and prepared to face the challenges of society with confidence. Today this mission continues to guide our curricula and teaching philosophy, inspiring both faculty and students to engage in a vitally enriching educational community.



Our values: Intelligent, discerning, compassionate, collaborative, purposeful, creative, worldly. The school fosters lifelong qualities of mind and character, giving our girls a love of learning, a deep understanding of themselves, their passions and their values, and a clear sense of their role in the global community.

- Gender: **Girls ONLY** (9-12)
- Grades: K-12
- Teacher Student Ratio: 1:9
- Total Student Enrollment: Approx 659
- Percentage International Students: Less than 10%
- Percentage of graduates entering college: 100%
- Class Types Offered: AP - 12
- ESL: English Proficiency preferred
- Accredited by: NAIS (National Association of Independent Schools), SAIS (Southern Association of Independent Schools), NCGS (National Coalition of Girls' Schools), SCISA (South Carolina Independent School Association)



GLOBAL STUDENT EXCHANGE INC.  
MIDDLEBURG FL 32068-0859  
Building Relationships One Student at a Time.

Phone: 904-444-9633  
[www.gseinc.org](http://www.gseinc.org)



### Tradition

From our founding more than 100 years ago, our original mission has remained the same: To produce educated women who are independent, ethically responsible, and prepared to face the challenges of society with confidence. Today this mission continues to guide our curricula and teaching philosophy, inspiring both the faculty and students to engage in a vitally enriching educational community.



**Application Deadline: 15 January**





GLOBAL STUDENT EXCHANGE INC.  
MIDDLEBURG FL 32068-0859  
Building Relationships One Student at a Time.

Phone: 904-444-9633  
[www.gseinc.org](http://www.gseinc.org)

## **SC15HH      FOUNDED 1965      GENERAL INFO**



We seek to educate college-bound students in a safe environment. Instilling personal integrity is central to our educational purpose. We strive to prepare a diverse population of qualified students for academic challenges, a successful college experience and rewarding lives. To cultivate a stimulating environment that promotes academic excellence, critical thinking, a life-long love of learning, foster supportive interaction among motivated and loyal students, faculty, parents and alumni. Our campus is located on a pristine 15-acre campus between a national preserve and the Atlantic Ocean.

We have 85 athletic programs, co-curricular activities, community service programs, visual and performing arts programs available to our students throughout the year.

- Gender: Co-Ed
- Grades: JK-12
- Teacher Student Ratio: 1:12
- Total Student Enrollment: Approximately: 411
- Percentage International Students: 5%
- Percentage of graduates entering college: 100%
- Class Types Offered: College Prep, AP - 13
- ESL: Available (at additional cost)
- Accredited and affiliated with the following: Southern Association of Colleges and Schools [SACS]  
National Association of Independent Schools [NAIS]  
Southern Association of Independent Schools [SAIS]  
South Carolina Independent School Association [SCISA]  
National Association of College Admissions Counselors  
School and Student Services [by NAIS]  
College Board, College Entrance Examination Board  
The Palmetto Association of Independent Schools. [PAIS-SC]



GLOBAL STUDENT EXCHANGE INC.

MIDDLEBURG FL 32068-0859

Building Relationships One Student at a Time.

Phone: 904-444-9633

[www.gseinc.org](http://www.gseinc.org)

Strong interpersonal relationships developed in a culture of collaborative learning are central to the school's mission. Students that are seeking to be a part of a school community that has a clear focus on individual growth, provides a high level of support a accountability need to apply!

### **Honors and Advanced Placement**

Students in grades 8-12 who participate in the Honors Program must maintain academic averages of 90 or higher. Advanced Placement courses are offered most years in: English Literature, English Language, United States History, Government, Calculus AB, Statistics, Biology, Physics B, Physics C, Chemistry, Spanish Language, French Language and Studio Art.



The school's academic mission is to cultivate a stimulating environment that promotes academic excellence, critical thinking and a lifelong love of learning. This love of learning is fostered through a rigorous college preparatory curriculum, strong interpersonal relationships and a supportive community environment.

Students have the opportunity to pursue traditional and college-level courses in an environment of supportive accountability. This challenge is created to help prepare each student for a successful college experience while maintaining a structure that supports the development of the habits of mind that will sustain them far beyond their journey through formal education.

Strong interpersonal relationships developed in a culture of collaborative learning is central to our mission. The relationship between advisor and advisee, the countless hours of extra help provided throughout the year, the support provided through co-curricular opportunities, and the individualized approach to college admissions help create a mutually



GLOBAL STUDENT EXCHANGE INC.

MIDDLEBURG FL 32068-0859

Building Relationships One Student at a Time.

Phone: 904-444-9633

[www.gseinc.org](http://www.gseinc.org)

beneficial environment in which teacher and student challenge one another towards personal growth.

The blending of challenging learning experiences with strong relationships provides the foundation for a supportive community. It is through these components that the community as a whole rises up in support of the journey of self-discovery. As the students give back to the greater community, they stand shoulder to shoulder with their peers and mentors. As they tackle the inherent challenges of interpersonal relationships, they are able to see models of how a multiplicity of personalities and approaches, within the school community, is able to coalesce around the clear purpose of facilitating the growth of the individual student.

### International Admissions



We welcome students from around the world to our beautiful campus, which is ideally situated on a renowned resort island. There are 16 countries represented within our student body. We offer an award-winning team of educators, a rigorous college-prep curriculum, and an extensive array of athletics, performing and visual arts.



International Student Tuition includes:



GLOBAL STUDENT EXCHANGE INC.  
MIDDLEBURG FL 32068-0859  
Building Relationships One Student at a Time.

Phone: 904-444-9633  
[www.gseinc.org](http://www.gseinc.org)

## Transportation

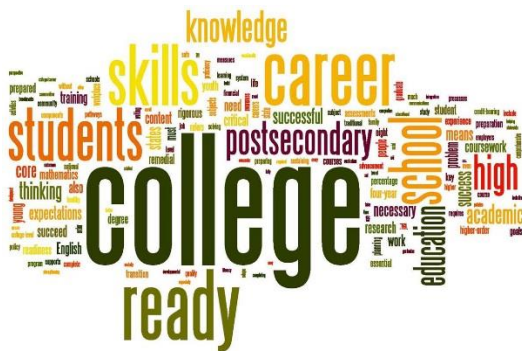
**New Student Enrollment Fee**  
**International Boarding Orientation Fee**  
**Technology Fee**  
**Insurance**

## Room & Board

**Text Books**  
**International Student Fee**  
**SAT/TOEFL Prep course**

\*Text books are leased to the student and will remain the property of the school. Textbooks that are not returned or returned unusable will be billed to the student at fair market value plus 15% restocking fee.

**Not included:** ESL, available **if needed**, personal spending money, sport fees, round trip airfare, and uniforms. Uniforms will be purchased by the student upon arrival.



## College Accpetances:





GLOBAL STUDENT EXCHANGE INC.

MIDDLEBURG FL 32068-0859

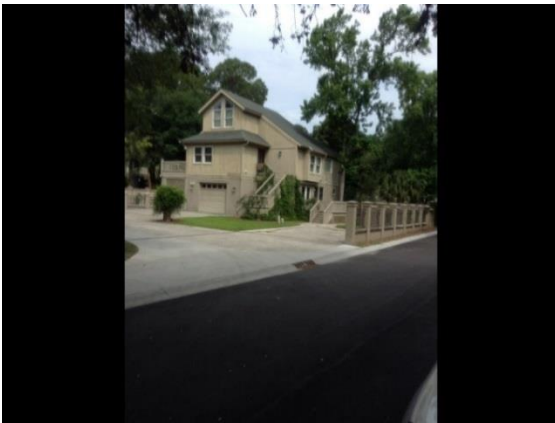
Building Relationships One Student at a Time.

Phone: 904-444-9633

[www.gseinc.org](http://www.gseinc.org)

Some of the colleges graduates have been accepted to are: Duke University, Georgetown, Loyola University of Chicago, University of Kentucky, Auburn University, William & Mary, University of Alabama, Texas A&M, St. John's University, University of North Carolina Chapel Hill, Penn State University, Clemson University, The Ohio State University, Tulane University, Northeastern, University of California, Vanderbilt, Villanova, Wake Forest University, William and Mary, Rutgers and many more...

One of the boarding facilities where international students live!



And they are not far from the beach!!!







GLOBAL STUDENT EXCHANGE INC.  
MIDDLEBURG FL 32068-0859  
Building Relationships One Student at a Time.

Phone: 904-444-9633  
[www.gseinc.org](http://www.gseinc.org)

## CA11KK

## GENERAL INFO

---



A private college prep school whose name signifies the philosophy of "onward and upward" with regard to success in education.

Mission is to prepare both International and local students not only for college, but also for life, so that our students can develop the skills necessary to succeed in our fast-changing, multi-cultural, technological world.

We are committed to providing a school environment that values ethical and emotional development as equally important to intellectual development.



We are interested in maximizing the potential creatively, as well as academically, of all of our students. To that end we stress small class sizes and individualized attention for greater and more rapid mastery in all subjects.



GLOBAL STUDENT EXCHANGE INC.

MIDDLEBURG FL 32068-0859

Building Relationships One Student at a Time.

Phone: 904-444-9633

[www.gseinc.org](http://www.gseinc.org)

We employ an interdisciplinary approach. Reading and writing skills, for example, are taught not only in English classes, but also in science and history as well. Likewise, math concepts are covered in science, economics and other courses when relevant. In addition, SAT /ACT prep are covered within the framework of the regular high school English and math classes, as well as in after hours elective courses. This allows the students a greater familiarity with (and a greater success in Taking) College Board tests when they are preparing to apply for the best colleges

Our educational philosophy works not only for high achievers, but also for those who have the ability to succeed, but who have not had a proper educational atmosphere which allowed for that outcome.

- Gender: Co-ed
- Grades: 9-12
- Teacher Student Ratio: 1:10
- Total Student Enrollment: Approx 75
- Percentage International Students: More than 10%
- Percentage of graduates entering college: 100%
- Class Types Offered: Dual Enrollment, College Prep, Honors, AP
- ESL: English Proficiency preferred
- Accredited by: Western Association of Schools and Colleges (WASC)



**Deadline: 15 February**



GLOBAL STUDENT EXCHANGE INC.  
MIDDLEBURG FL 32068-0859  
Building Relationships One Student at a Time.

Phone: 904-444-9633  
[www.gseinc.org](http://www.gseinc.org)

## FL10MF

## FOUNDED 1933

## GENERAL INFO



Our school prepares students for college and life by inspiring achievement, integrity, confidence, and compassion in an academic community dedicated to nurturing mind, body, and soul. Accordingly, we provide an unequalled breadth of opportunities and experiences which enable every student to optimize his or her unique interests, abilities, and talents.

An independent college preparatory day and boarding school founded in 1933, has long been known as one of the top educational institutions in the country. This prominence is rooted in an enduring *All Things Possible* mindset that encourages students to discover their strengths and excel in them throughout their experience. We offer courses in five languages (including Chinese and Japanese) and 20 Advanced Placement Courses.

We offer a comprehensive program in the fine and performing arts as part of a complete education for students in every grade level. Disciplines include dance, drama, instrumental music, vocal music, and visual arts through academic classes and extracurricular activities. Approximately 85% of the student body participates in more than 100 performances and gallery shows within the fine and performing arts department each year.

The School's balanced college preparatory program combines academics, offerings in the fine and performing arts, athletics, leadership and service opportunities and activities, and a nationally-known college counseling and guidance program. The boarding program, in which boys and girls reside on different campuses, complements the coeducational learning environment. After-school activities abound on each campus providing numerous opportunities and areas of interest for students.





GLOBAL STUDENT EXCHANGE INC.

MIDDLEBURG FL 32068-0859

Building Relationships One Student at a Time.

Phone: 904-444-9633

[www.gseinc.org](http://www.gseinc.org)



- Gender: Co-ed
  - Grades: 9-12
  - Teacher Student Ratio: 1:11
  - Total Secondary Students: Approx: 800
  - Percentage International Students: More than 10%
  - Percentage of graduates entering college: 100%
  - Class Types Offered: College Prep, Honors, AP -21
  - ESL: English fluency requirement
- Accredited by: National Association of Independent Schools (NAIS), Florida Council of Independent Schools (FCIS), Southern Association of Colleges and Schools (SACS)





GLOBAL STUDENT EXCHANGE INC.

MIDDLEBURG FL 32068-0859

Building Relationships One Student at a Time.

Phone: 904-444-9633

[www.gseinc.org](http://www.gseinc.org)

The campus is home to approximately 30 female boarders, along with resident staff members and their families, nestled in a picturesque wooded setting along the banks of a creek. Boarding students get the guidance and discipline they would at home, as well as familial intimacy. The Resident Ambassador Program (R.A.P.) pairs boarding students with families living off-campus, giving them the chance to form strong bonds while they're away from home.

In addition to the excellent recreational facilities on campus, students also take part in organized off-campus activities that provide entertainment and enrichment.

The school is closed during Thanksgiving, Christmas and Spring Break. If a boarding student is not going home or does not have plans to leave the campus, their Resident Director will find a school host family to take care of the student. A student is welcome to stay in the dorms during the holiday **for a nominal fee**. Since the campus is very quiet during a break, we encourage students to leave.

---

**CA10RB**

**GENERAL INFO**

---





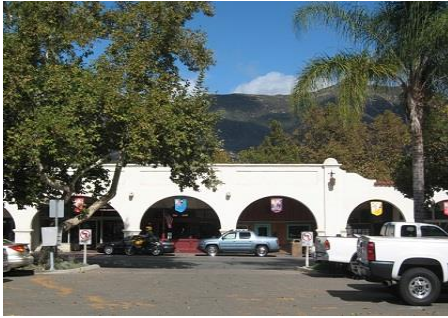
GLOBAL STUDENT EXCHANGE INC.

MIDDLEBURG FL 32068-0859

Building Relationships One Student at a Time.

Phone: 904-444-9633

[www.gseinc.org](http://www.gseinc.org)



Our mission: is the development of each individual's intellectual and artistic abilities. Through awakening the spirit of inquiry, we encourage each student to pursue integrity and excellence. Our non-competitive community builds honesty, respect, compassion, and responsibility. Our goal is to develop a life-long habit of learning as embodied in our school's motto, "Aun Aprendo—I am still learning".

Very exclusive boarding school on a 500 acre campus – approximately 100 students ONLY and the faculty live on campus as well.

- A College Preparatory Program emphasizing creative abilities and critical thinking skills
  - An internationally diverse community
  - Approximately 100 students with a student to faculty ratio of 4:1
  - A nurturing Residential Life Program
  - A community that values both formal and informal mentoring
  - An Instructional Support Program designed to meet the needs of all students at their current academic achievement level
  - A community that celebrates individual backgrounds and beliefs
  - A Sustainability program with emphasis on ecological literacy
  - An appreciation for the founders' original vision of global citizenry
  - An Experiential/Project-based learning program
  - An extensive Visual and Performing Arts Program
  - A well-rounded fitness and Interscholastic Athletic program
  - An appreciation for nature with respect, compassion and responsibility for all forms of life
- 
- Gender: Co-ed



GLOBAL STUDENT EXCHANGE INC.

MIDDLEBURG FL 32068-0859

Building Relationships One Student at a Time.

Phone: 904-444-9633

[www.gseinc.org](http://www.gseinc.org)

- Grades: 9-12
- Teacher Student Ratio: 1:4
- Total Secondary Students: Approx: 100
- Percentage International Students: More than 10%
- Percentage of graduates entering college: 100%
- Class Types Offered: College Prep, Honors, AP (11<sup>th</sup>/12<sup>th</sup> grades)
- ESL: English fluency requirement – ESL available
- Accredited by: Western Association of Schools and Colleges (WASC),



**MI12JH ESTABLISHED 1922**

**GENERAL INFO**



GLOBAL STUDENT EXCHANGE INC.

MIDDLEBURG FL 32068-0859

Building Relationships One Student at a Time.

Phone: 904-444-9633

[www.gseinc.org](http://www.gseinc.org)



As a top boarding school, the purpose of our International Student Program is to improve communication between international students, teachers, parents, and the schools' administration. The program intends to foster personal and academic growth while raising awareness and appreciation of our multicultural community. International students are supported in areas of academics, dormitory living and personal challenges.

We are located on a beautiful 319-acre campus, known as one of the masterpieces of American architecture. In 1989, it was designated as a National Historic Landmark, an honor accorded only two other independent schools in the United States.

The academic college prep program has been carefully developed to introduce children to academic skills in a positive learning environment. The focus is on strong academics and a balance of fine arts in a liberal arts education.

We provide the knowledge and guidance necessary to give our graduates the opportunity to grasp the future they desire. We challenge our students inside the classroom and out. We make certain that they have opportunities to grow and develop, and that they feel supported and encouraged. Students learn how to collaborate with each other and with their advisors and teachers. We do all of this with an eye toward their futures. We want our students to look back at their experience and understand that their hard work was well worth it, because they are now living the lives they always imagined was possible.

Recognizing that the presence of international students broadens the entire school community, our prestigious boarding school offers various activities throughout the year that provide an opportunity for the students representing different countries to share their cultures with the rest of the school. The International Student Program's ultimate aim is to foster the students' recognition of their contributions to the school, while helping them reach beyond their world.



GLOBAL STUDENT EXCHANGE INC.

MIDDLEBURG FL 32068-0859

Building Relationships One Student at a Time.

Phone: 904-444-9633

[www.gseinc.org](http://www.gseinc.org)



- Gender: Co-ed
- Grades: 9-12
- Teacher Student Ratio: 1:8
- Total Secondary Students: Approx: 800
- Percentage International Students: More than 13%
- Percentage of graduates entering college: 100%
- Class Types Offered: College Prep, Honors, AP -14
- ESL: Available
- Accredited by: Independent Schools Association of the Central States (ISACS)



**Application Deadline Jan. 31 / Apr. 15 / rolling**





GLOBAL STUDENT EXCHANGE INC.

MIDDLEBURG FL 32068-0859

Building Relationships One Student at a Time.

Phone: 904-444-9633

[www.gseinc.org](http://www.gseinc.org)

## PA12BJ

## ESTABLISHED 1925

## GENERAL INFO



Located on a 90 acre campus, our mission is to create an environment of educational excellence that prepares students for success in college and beyond. We strongly value intellectual challenge and academic achievement, creative and independent thinking, mutual respect between students and teachers, deep respect for each individual, and diversity.

Energized by the close, working relationships they form with teachers, students perform at their highest level in the classroom and the art room, on the stage and the athletic field. Mentored by faculty, students learn to take responsibility for their own learning and lives and so prove successful in college and adulthood.

We believe that all young people love to learn, and we view it as our responsibility to develop a challenging and creative curriculum that makes this curiosity a lifelong trait. We push students to investigate, to question and to make connections between disciplines. Our academically demanding curriculum, high expectations and the dedicated, personal involvement of our teachers ensure that every student is prepared for higher learning.

Our students develop habits of reflection and critical thinking that are crucial to an understanding of self and society. Because we understand that individual success is intertwined with the larger world, we actively encourage students to become engaged in improving their community. We provide an academic program relevant to the lives of students and to the social, economic, political, and environmental issues of the day. We provide an education that is a solid foundation for broad and lasting success in academics and in life.





GLOBAL STUDENT EXCHANGE INC.  
MIDDLEBURG FL 32068-0859  
Building Relationships One Student at a Time.

Phone: 904-444-9633  
[www.gseinc.org](http://www.gseinc.org)



- Gender: Co-ed
- Grades: 9-12
- Teacher Student Ratio: 1:6
- Total Secondary Students: Approx: 235
- Percentage International Students: More than 15%
- Percentage of graduates entering college: 100%
- Class Types Offered: College Prep, Honors, AP -10
- ESL: Available with full year and Summer programs
- Accredited by: Middle States Association of Colleges and Schools

**Application Deadline Jan. 15 / Feb. 1 / ROLLING**





GLOBAL STUDENT EXCHANGE INC.  
MIDDLEBURG FL 32068-0859  
Building Relationships One Student at a Time.

Phone: 904-444-9633  
[www.gseinc.org](http://www.gseinc.org)

**AZ10RB**

**FOUNDED 1948**

**GENERAL INFO**



## **THE INTERNATIONAL BACCALAUREATE PROGRAM**

The IB Diploma Program is a challenging two-year curriculum that leads to a high school diploma that is widely recognized by the world's leading universities. IB students learn to think creatively, globally, and independently.

In grades 11 and 12, students study six subjects selected from the six subject groups over a two-year period. Normally three subjects are studied at higher levels (courses representing 240 teaching hours), and the remaining three subjects are studied at standard levels (courses representing 150 teaching hours).

We educate students for college and for life by encouraging them to become intellectually curious, academically accomplished and creatively expressive. The program fosters intercultural understanding and world citizenship, environmental stewardship, the value of physical labor, and service to humanity with a willing spirit.

Academically, our school provides students with a solid foundation in the traditional sciences with an emphasis on the environment and the anthropogenic factors that affect our environment. Our academic courses focus on critical thinking, problem solving, and scientific inquiry. In addition, we integrate long-term research projects into the standard curriculum to help students appreciate the process of science and scientific methodology.

Our graduates are ethical individuals, possessed of a strong sense of personal and social responsibility, skilled in ways that will enable them to participate effectively in community building and decision making, appreciative of the necessity and value of physical work, open to the discovery and enduring satisfactions of artistic creation, knowledgeable about the depth and range of our shared cultural heritage, well prepared for entry into the university of their choice, generous in spirit, mindful of the importance of world citizenship and ready to practice its privileges and obligations.



GLOBAL STUDENT EXCHANGE INC.

MIDDLEBURG FL 32068-0859

Building Relationships One Student at a Time.

Phone: 904-444-9633

[www.gseinc.org](http://www.gseinc.org)



- Gender: Co-ed
- Grades: 9-12
- Teacher Student Ratio: 1:11
- Total Secondary Students: Approx: 98
- Percentage International Students: More than 40%
- Percentage of graduates entering college: 100%
- Class Types Offered: IB ONLY, PRE IB for 9<sup>th</sup> and 10<sup>th</sup> grades
- ESL: English fluency requirement – ESL available.
- Accredited by: North Central Association and the International Baccalaureate Organization





GLOBAL STUDENT EXCHANGE INC.  
MIDDLEBURG FL 32068-0859  
Building Relationships One Student at a Time.

Phone: 904-444-9633  
[www.gseinc.org](http://www.gseinc.org)

## CAAZ11MM GENERAL INFO

---



Here, you can reach your highest potential, participate in sports and activities, and make lifelong friendships. Our students study on two picturesque and complementary campuses.

Our mission: to offer American and international students personalized, stimulating classes and supportive, nurturing care that allows individual student success, understanding of diverse cultures, and preparation for college and life.

We offer programs to strengthen students through small classes—normally of eight to twelve students—with personalized lessons, achievement grouping, two unique campuses in safe environments, and especially by supporting student achievements through an involved, nurturing, caring staff who create an environment for individual student success.

We seek to admit motivated, successful students who want smaller classes and personalized instruction.

On our small campuses, all students participate, contribute, and belong.







GLOBAL STUDENT EXCHANGE INC.

MIDDLEBURG FL 32068-0859

Building Relationships One Student at a Time.

Phone: 904-444-9633

[www.gseinc.org](http://www.gseinc.org)



- Gender: Co-ed
- Grades: 9-12
- Teacher Student Ratio: 1:11
- Total Student Enrollment: Approx 180
- Percentage International Students: More than 10%
- Percentage of graduates entering college: 100%
- Class Types Offered: College Prep
- ESL: English Proficiency preferred; ESL available – will take school placement exam
- Accredited by: North Central Association and the International Baccalaureate Organization.



We are an independent, non-profit school that offers:

- A rigorous curriculum prepares students for college
- A supportive, caring community makes every student feel included
- Small class sizes offer personal attention
- An intensive ESL Program teaches English quickly
- Our dedicated faculty inspire students
- Two distinctive campuses provide beautiful settings
- Extracurricular activities build well-rounded students
- The international student body promotes multi-cultural understanding



GLOBAL STUDENT EXCHANGE INC.  
MIDDLEBURG FL 32068-0859  
Building Relationships One Student at a Time.

Phone: 904-444-9633  
[www.gseinc.org](http://www.gseinc.org)

## **AZ11SM      ESTABLISHED 1929      GENERAL INFO**



We are a nonsectarian school, attracting a diverse student body that mirrors the world. We emphasize each student's physical, aesthetic, and spiritual life through high expectations and a strong sense of personal and community responsibility. And with mesas, river beds, and the high desert providing not only a backdrop but also a classroom, we instill in our students the skills and outlook to succeed in college and more importantly in life.

We pursue students whose values, energy, spirit, and passion are in line with our lasting commitment to tradition, character, and excellence.

We are committed to diversity and actively seek to enroll students from many countries. Our school community is a wonderfully diverse group of world citizens from China, Taiwan, Canada, Germany, Great Britain, Turkey, Russia, Norway, Colombia, and Mexico.

The English as a Second Language (ESL) program is comprehensive; and its staff has many years of experience. ESL teachers and staff are trained to assess each student's English skill level using TOEFL, TOEFL JR/iBT scores.





GLOBAL STUDENT EXCHANGE INC.  
MIDDLEBURG FL 32068-0859  
Building Relationships One Student at a Time.

Phone: 904-444-9633  
[www.gseinc.org](http://www.gseinc.org)

**We offer the following ESL courses:**

ESL I: Intermediate Speaking and Listening  
ESL II: Intermediate Grammar  
ESL Advanced Reading  
TOEFL Prep I  
ESL World History  
ESL US History



As part of the School's commitment to diversity, we actively seek and enroll students from other nations. We have welcomed students from Bahamas, Bosnia, China, Colombia, Ecuador, Germany, Hong Kong, Japan, Korea, Lithuania, Nigeria, Norway, Russia, Saudi Arabia, Spain, Taiwan, Turkey, and Vietnam.





GLOBAL STUDENT EXCHANGE INC.

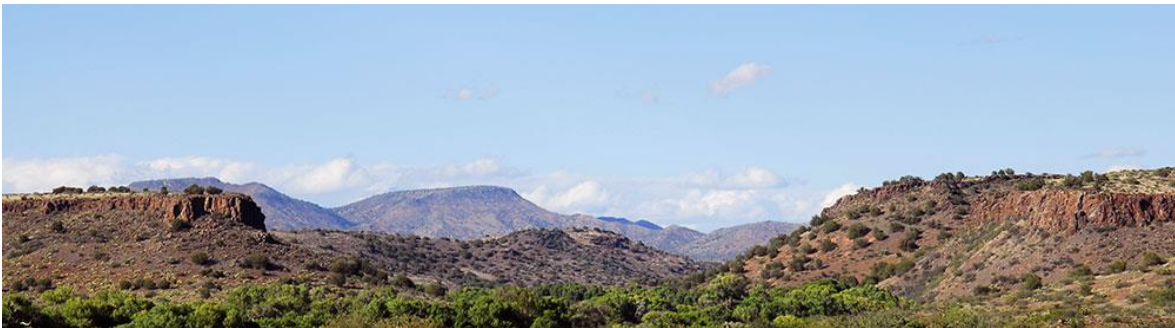
MIDDLEBURG FL 32068-0859

Building Relationships One Student at a Time.

Phone: 904-444-9633

[www.gseinc.org](http://www.gseinc.org)

- Gender: Co-ed
- Grades: 8-12
- Teacher Student Ratio: 1:6
- Total Secondary Students: Approx: 120
- Percentage International Students: Less than 10%
- Percentage of graduates entering college: 100%
- Class Types Offered: College Prep, Honors, AP -11
- ESL: English fluency requirement – ESL available
- Accredited by: North Central Accreditation, National Association of Independent Schools, Association of Boarding Schools, Western Association of Boarding Schools.







We provide a nurturing community that empowers young men and women to develop academically, socially, and morally, preparing them for college and for the challenges of living in the 21st century.

Our co-ed global campus hosts students from more than 30 countries and 25 states. What better way to prepare than to learn alongside such a diverse array of students and perspectives, languages and cultures.

Learning extends beyond the classroom. We take advantage of our exquisite setting to underscore the importance of environmental stewardship. We work with the local community to expose our students to the value of service. Finally, we provide a variety of extracurricular activities that allow students to flourish creatively, athletically and as leaders.



Every night, after dinner and before lights out, students devote two hours to completing homework, fulfilling reading assignments, and studying for exams. Our built-in study halls, closely monitored by helpful teachers, not only ensure that your student's work gets done on time, but helps him internalize time management skills critical to his college success.

Through demonstrating in and out of the classroom deep respect for the unique capabilities and talents of their students, our teachers, dorm parents, and administrators create an environment that prepares our students for healthy and productive lives. Their skills in providing an artful balance of nurturing support and challenging rigor distinguishes our faculty and staff as extraordinary educators.



GLOBAL STUDENT EXCHANGE INC.

MIDDLEBURG FL 32068-0859

Building Relationships One Student at a Time.

Phone: 904-444-9633

[www.gseinc.org](http://www.gseinc.org)



- Gender: Co-ed
- Grades: 8-12
- Teacher Student Ratio: 1:10
- Total Student Enrollment: Approx 250
- Percentage International Students: More than 40%
- Percentage of graduates entering college: 100%
- Class Types Offered: Dual Enrollment, College Prep, Honors -3 , AP -15
- ESL: English Proficiency preferred – ESL available.
- Accredited by: Northwest Association of Schools and Colleges (NASC), Member of National Association of Independent Schools (NAIS)





GLOBAL STUDENT EXCHANGE INC.  
MIDDLEBURG FL 32068-0859  
Building Relationships One Student at a Time.

Phone: 904-444-9633  
[www.gseinc.org](http://www.gseinc.org)

**Application deadline: ROLLING**



GLOBAL STUDENT EXCHANGE INC.

MIDDLEBURG FL 32068-0859

Building Relationships One Student at a Time.

Phone: 904-444-9633

[www.gseinc.org](http://www.gseinc.org)

## FL11KK ESTABLISHED 1912 GENERAL INFO

### ADMISSIONS



An international, coeducational, independent college preparatory school for grades PK3-12, with our boarding program serving grades 7-12, and post-graduate studies. Our mission is to inspire students to become knowledgeable leaders with global vision that instills a passion for learning, and that nurtures character development in a disciplined and diverse community.

Five generations of graduates have been guided by three fundamental principles: *Knowledge, Character and Community*. These principles are illustrated in the classroom through Subject Area Concentration diplomas, as well as Advanced Placement and Honors courses. Seventy-six percent of our students pass the Advanced Placement exams and 58% score a 4 or higher. Our students have a 100% college acceptance rate, including prestigious schools such as Harvard, Yale, MIT, and UC Berkeley.

Our school offers considerable advantages to parents and students seeking the highest quality education for entrance into the world's elite colleges and universities. At the heart of the academy experience is an engaging and challenging academic environment that gives students the desire and skills to achieve at the highest levels. Outside of the classroom, students continue to develop their talents and abilities through involvement in fine arts, athletics, school clubs, and service organizations. Our international character adds an exciting dimension to our community and the educational experience we provide.







GLOBAL STUDENT EXCHANGE INC.

MIDDLEBURG FL 32068-0859

Building Relationships One Student at a Time.

Phone: 904-444-9633

[www.gseinc.org](http://www.gseinc.org)



- Gender: Co-ed
- Grades: Pre K-12 (**PG offered**)
- Teacher Student Ratio: 1:16
- Total Student Enrollment: Approx 772
- Percentage International Students: More than 10%
- Percentage of graduates entering college: 100%
- Class Types Offered: Honors - 14, AP - 23
- ESL: English Proficiency preferred – SLEP or TOEFL Required.
- Accredited by: Southern Association of Colleges and Schools (SACS), Florida Council of Independent Schools (FCIS), Southern Association of Independent Schools (SAIS)

Our dormitories are led by House Parents who supervise and care for our students. House Parents play a key role in our boarding community; many students consider them to be family members. We encourage regular communication between House Parents and students' families, this allows the family and the Academy to work more closely for the student's well-being, progress and success.

Students are expected to perform daily dorm chores, including maintaining/cleaning their rooms (making their beds, vacuuming floors, etc). This instills a sense of responsibility, ownership, and gives them the ability to take pride in their surroundings.

Each boarding student participates year round on a competitive athletic team or the option to be involved with an after school activity. After school activities take place on Monday, Tuesday and Thursday from 4 p.m. – 5 p.m. Students have an array of activities to choose from including: Strength conditioning, general fitness, yoga, tennis lessons, swimming, drama, select choir, etc. Competitive athletic teams require more of



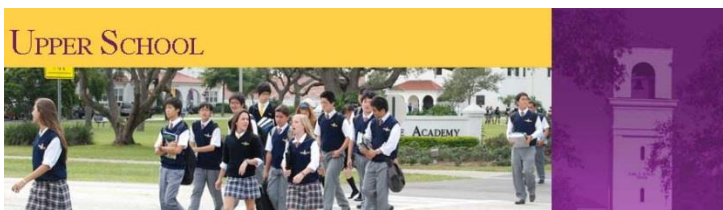
GLOBAL STUDENT EXCHANGE INC.  
MIDDLEBURG FL 32068-0859  
Building Relationships One Student at a Time.

Phone: 904-444-9633  
[www.gseinc.org](http://www.gseinc.org)

a commitment as they may practice Monday – Saturday and may travel to neighboring schools for competition.



Upon completion of activities/athletics students go to the Dining Hall for dinner and the opportunity to socialize with friends. After dinner, students have study hall in their respective dorm. Students who achieve a 3.0 grade point average or higher will have earned honor roll privileges (student receiving a D or an F in any class are ineligible for making Honor Roll). These privileges allow these students to watch television in the rec room, use their computer to watch a movie or play a game, make phone calls, or visit with another honor roll student. Those not on the honor roll are expected to be in their room studying. Our goal is to have as many students possible on the honor roll.



**Admission deadline: ROLLING**  
**SECOND SEMESTER (JANUARY) DEADLINE 17 OCTOBER**



GLOBAL STUDENT EXCHANGE INC.  
MIDDLEBURG FL 32068-0859  
Building Relationships One Student at a Time.

Phone: 904-444-9633  
[www.gseinc.org](http://www.gseinc.org)

## MA11PG

## FOUNDED 1797

## GENERAL INFO



An independent, co-educational boarding school located in the northeast that enjoys a diverse student population and its international students, who comprise 16% of the student body and represent 33 countries. International students can expect much the same new student experience as their American classmates. However, we are aware that the transition to a new school and a new culture can be challenging in many ways.

Most students who come from international schools with an English language-based curriculum do not experience any academic adjustment problems; however, those who are not accustomed to taking all their courses in English may spend a year taking ESL (English as a Second Language) as a sixth course in their first year. The ESL class, which is described in detail in our Course of Study, is small enough that it can be tailored to meet the needs of individual students.





GLOBAL STUDENT EXCHANGE INC.  
MIDDLEBURG FL 32068-0859  
Building Relationships One Student at a Time.

Phone: 904-444-9633  
[www.gseinc.org](http://www.gseinc.org)



During the school year, the International Club offers any student the opportunity to share his or her culture through informal socializing, dances, and ethnic meals; the club also organizes day trips around New England.

- Gender: Co-ed
- Grades: 9 - 12
- Teacher Student Ratio: 1:6
- Total Student Enrollment: Approx 630
- Percentage International Students: More than 16%
- Percentage of graduates entering college: 100%
- ESL: English Proficiency preferred – ESL offered
- Class Types Offered: AP -19
- Avg SAT Score: 2000 (SAT REQUIRED)
- Accredited by: New England Association of Schools and colleges.

Applicants for grades 9, 10 and 11 should take the Secondary School Admission Test (SSAT) or TOEFL. **The SSAT must be completed during the academic year in which an application is submitted. To meet our application deadline a candidate should take the SSAT in November.**

Student application, teacher recommendations and results of standardized testing should be **submitted on or before January 10.**





GLOBAL STUDENT EXCHANGE INC.

MIDDLEBURG FL 32068-0859

Building Relationships One Student at a Time.

Phone: 904-444-9633

[www.gseinc.org](http://www.gseinc.org)

## CT11MB

## FOUNDED 1891

## GENERAL INFO

An independent boarding school located in the northeast, the school provides an education of unsurpassed quality to 600 students in grades 9 through 12, and to a small number of postgraduates. Students come from across the United States and 34 foreign countries. Graduates attend many of the most selective universities and colleges.



The School is committed to mastery of learning skills, development of intellectual curiosity, excellence, and creativity in all disciplines, and enthusiastic participation in athletics and other school activities. We encourage our students to develop clarity of thought, confidence and facility in expressing ideas, and artistic and aesthetic sensitivity. We expect all members of the community, in and out of the classroom, to subject their views and actions to critical examination and to accept responsibility for them. We hope that our graduates will leave with a commitment to service to others and to environmental stewardship, and with a greater understanding of themselves and of their responsibilities in a global society.





GLOBAL STUDENT EXCHANGE INC.  
MIDDLEBURG FL 32068-0859  
Building Relationships One Student at a Time.

Phone: 904-444-9633  
[www.gseinc.org](http://www.gseinc.org)

- Gender: Co-ed
- Grades: 9 - 12
- Teacher Student Ratio: 1:6
- Total Student Enrollment: Approx 600
- Percentage International Students: More than 10%
- Percentage of graduates entering college: 100%
- ESL: English Proficiency preferred – ESL offered
- Class Types Offered: AP -21
- Avg SAT Score: 2013 (SAT REQUIRED)
- Accredited by: National Association of Independent Schools (NAIS), Connecticut Association of Independent Schools (CAIS), New England Association of Schools and Colleges

**Application deadline: December 15**





GLOBAL STUDENT EXCHANGE INC.

MIDDLEBURG FL 32068-0859

Building Relationships One Student at a Time.

Phone: 904-444-9633

[www.gseinc.org](http://www.gseinc.org)

## PA11LH

## FOUNDED 1746

## GENERAL INFO



We are the nation's oldest independent boarding and day **school for girls**. We believe we are the nation's finest college preparatory school in the United States. With a diverse student body representing 16 nations and 19 states, our school is a truly enriching cultural experience.

We are a close community of young women from all corners of the United States and many countries around the world. Together, they experience the best all-girls living and learning experience that is available. It is truly a place where girls see girls in the lead.

Our dynamic academic program is based on an innovative, multifaceted college preparatory experience. Students consistently achieve the highest degree of academic excellence, both locally and nationally. No other American boarding school for girls can match the combination of our median SAT score of 2095 and average Advanced Placement (AP) Exam score of 4.6.

The academic level of our students ranges from above average to outstanding, and students are admitted without regard to nationality, ethnicity, religion, socio-economic class, or any other discriminating factor, except academic achievement. Such an admission policy has produced an extremely talented and diverse student body in an environment that will enhance the learning experience of each girl and best prepare graduates for the highly competitive realities of college admission and employment in the 21st century.



GLOBAL STUDENT EXCHANGE INC.  
MIDDLEBURG FL 32068-0859  
Building Relationships One Student at a Time.

Phone: 904-444-9633  
[www.gseinc.org](http://www.gseinc.org)

### International Program Highlights

- A comprehensive ESL curriculum that serves students from the intermediate to advanced English proficiency level
  - English tutorial classes
  - Trips to major urban centers – Philadelphia, New York City, Baltimore, Washington, D.C.
  - Fall/spring break travel programs to other U.S. and European destinations
  - Global Community Council and Model U.N. to promote cross cultural exchange and understanding
- Gender: **GIRLS ONLY**
  - Grades: 5 - 12
  - Teacher Student Ratio: 1:12
  - Total Student Enrollment: Approx 250
  - Percentage International Students: Less than 15%
  - ESL: SLEP or TOEFL required – ESL offered
  - Percentage of graduates entering college: 100%
  - Class Types Offered: AP -18,
  - AVG SAT Score: 2013 (SSAT REQUIRED)
  - 2095 median SAT; 720 median SSAT; 4.6 avg. AP Exam Score
  - Accredited by: Middle States Association



Student application, teacher recommendations and results of standardized testing should **be submitted on or before 1 FEBRUARY with a rolling admission afterward.**





GLOBAL STUDENT EXCHANGE INC.  
MIDDLEBURG FL 32068-0859  
Building Relationships One Student at a Time.

Phone: 904-444-9633  
[www.gseinc.org](http://www.gseinc.org)

## **MD14GP**

## **FOUNDED 1789**

## **GENERAL INFO**



A Catholic boarding school for young men we have students from 17 states and 22 different countries enrolled. We welcome students of all faiths believing that conscious reflection on one's faith, whatever it may be, leads to spiritual maturity and commitment to serve others. We are located on 97 acres with two dormitories, state of the art library, a fully-equipped recording studio, nine-hole golf course and a regulation length artificial turf field with stadium lights.

Our graduates take responsibility for their future, growing in self-knowledge and self-control. They are more open to different points of views and new experiences. Our education centers on the education of the whole person: mind, spirit and body.





GLOBAL STUDENT EXCHANGE INC.

MIDDLEBURG FL 32068-0859

Building Relationships One Student at a Time.

Phone: 904-444-9633

[www.gseinc.org](http://www.gseinc.org)

- Gender: **ALL BOY**
- Grades: 9-12
- Teacher Student Ratio: 1:8
- Total Student Enrollment: Approx: 490
- Percentage International Students: 25%
- Percentage of graduates entering college: 100%
- Class Types Offered: AP - 24
- ESL: Available
- Accredited by: Maryland State Department of Education and the Middle States Association of Schools and Colleges.

TOEFL is required for 9<sup>th</sup> grade applications with a minimum score of 50 and for 11<sup>th</sup> grade international students a minimum score of 100. SSAT is required.



30 extracurricular activities and clubs

Various student publications

28 athletic teams including hockey, rugby and fencing

**Admission Deadline: 1 December**





GLOBAL STUDENT EXCHANGE INC.

MIDDLEBURG FL 32068-0859

Building Relationships One Student at a Time.

Phone: 904-444-9633

[www.gseinc.org](http://www.gseinc.org)

Students are expected to be well groomed and neatly dressed in accordance with good taste. Mandatory school attire consists of: Navy blue blazer, khaki trousers, belt, white, light blue or light yellow solid-colored shirt, necktie, socks, brown or black hard soled dress shoes only.







GLOBAL STUDENT EXCHANGE INC.  
MIDDLEBURG FL 32068-0859  
Building Relationships One Student at a Time.

Phone: 904-444-9633  
[www.gseinc.org](http://www.gseinc.org)

**RI12MB**

**FOUNDED 1893**

**GENERAL INFO**



We recognize the importance of preparing students to meet the challenging demands of our ever-changing world. As a community of learners, we strive to unlock the full potential of each individual, developing confident and independent lifelong learners. In doing so, we are completely invested in creating an atmosphere that gives students the tools to learn and focuses upon each student's learning style.

The **Mission** of our school is to reach out to those students with learning differences whose needs have not been met in public or private schools. Our student-oriented teachers are committed to identifying individual learning strengths and teaching to them. Since 1893, we have embraced social and economic diversity, offering a generous, need-based financial aid program. In a nurturing community, we emphasize moral and ethical values guided by our heritage in preparation for each student's purposeful engagement in the world.







GLOBAL STUDENT EXCHANGE INC.

MIDDLEBURG FL 32068-0859

Building Relationships One Student at a Time.

Phone: 904-444-9633

[www.gseinc.org](http://www.gseinc.org)

- Gender: Co-Ed
- Grades: 9 - 12
- Teacher Student Ratio: 1:5
- Total Student Enrollment: Approx 218
- Percentage International Students: 18%
- ESL available
- AVG SAT: 1561
- Percentage of graduates entering college: 100%
- Class Types Offered: AP - 4
- Accredited by: New England Association of Schools and Colleges (NEASC), Member of the National Association of Independent Schools,



**School WILL accept second semester students.**



GLOBAL STUDENT EXCHANGE INC.  
MIDDLEBURG FL 32068-0859  
Building Relationships One Student at a Time.

Phone: 904-444-9633  
[www.gseinc.org](http://www.gseinc.org)

## ME12HA

## FOUNDED 1804

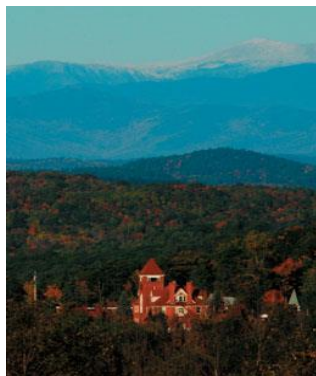
## GENERAL INFO



We are a small, independent, college preparatory boarding and day school for boys and girls in grades six through postgraduate. Humanity and achievement ring true. Students from across the United States and around the world are challenged and inspired to reach their highest potential in mind, body, and spirit through small classes, knowledgeable and caring teachers who provide individual attention, and a friendly, respectful, family atmosphere. Our 1500-acre campus provides unparalleled outdoor recreation opportunities.

Our mission is to inspire and guide students to reach their highest potential in mind, body and spirit. Our core values are fundamental to the experience:

- A community of trust, where an individual's word is his or her bond.
- We work at instilling intellectual and moral discipline through structure and accountability to high standards.
- We honor and promote a unique awareness of tradition, place, and environment.
- Our teachers model a passion and dedication to teaching and learning.





GLOBAL STUDENT EXCHANGE INC.  
MIDDLEBURG FL 32068-0859  
Building Relationships One Student at a Time.

Phone: 904-444-9633  
[www.gseinc.org](http://www.gseinc.org)



- Gender: Co-Ed
- Grades: 6 – 12 (**PG offered**)
- Teacher Student Ratio: 1:7
- Total Student Enrollment: Approx 260
- Percentage International Students: 27%
- ESL available
- Percentage of graduates entering college: 100%
- Class Types Offered: AP - 12
- SSAT Required, AVG SAT Score: 1610,  
AVG ACT Score - 36
- Accredited by: New England Association of Schools and  
Colleges (NEASC)

**Deadline: 15 January - School will NOT accept second semester students.**





GLOBAL STUDENT EXCHANGE INC.  
MIDDLEBURG FL 32068-0859  
Building Relationships One Student at a Time.

Phone: 904-444-9633  
[www.gseinc.org](http://www.gseinc.org)

## **ME12AS**

## **FOUNDED 1799**

## **GENERAL INFO**



With more than 15 countries represented, ours is truly an international community. By the time international students graduate many have assumed leadership roles within the school and the entire community has benefited from living and working with students from around the world. Systems and programs have been developed to support international students in their transition to life and ensure that theirs is an optimal experience.

Situated on a 400 acre campus, we educate our students in mind, body, and spirit in order to:

- Prepare them for the challenges and opportunities of higher education;
- Help them learn to accept and respect themselves and their fellow students, and to care for those in less fortunate circumstances;
- Teach them to be responsible stewards of our natural heritage;
- Remind them that one man or woman of principle can always make a difference.







GLOBAL STUDENT EXCHANGE INC.

MIDDLEBURG FL 32068-0859

Building Relationships One Student at a Time.

Phone: 904-444-9633

[www.gseinc.org](http://www.gseinc.org)



- Gender: Co-Ed
- Grades: 9 – 12 (**PG offered**)
- Teacher Student Ratio: 1:11
- Total Student Enrollment: Approx 245
- Percentage International Students: 19%
- ESL: Available
- Percentage of graduates entering college: 100%
- Class Types Offered: AP - 13
- SSAT NOT required
- Accredited by: New England Association of Schools and Colleges (NEASC) , memberships in the Cum Laude Society, the College Board, NACAC, NEACAC, CASE, ISANNE and MAIS

**Deadline: 15 January - School does NOT accept second semester students.**



GLOBAL STUDENT EXCHANGE INC.  
MIDDLEBURG FL 32068-0859  
Building Relationships One Student at a Time.

Phone: 904-444-9633  
[www.gseinc.org](http://www.gseinc.org)

## GA12KM

## FOUNDED 1905

## GENERAL INFO



**Mission:** To empower students to learn with passion, act with integrity and serve with respect.

A coeducational day and boarding school established in 1905, we do more than prepare our students for college. We prepare them for life by emphasizing the pursuit of individual excellence in a diverse learning environment. Our students are the center of all that we do. Together, we challenge them to learn with passion, act with integrity, and serve with respect.

Our school community represents an average of 25 states and 30 countries worldwide. Stretching for more than 400 acres, the campus is nestled around a small lake in the foothills.

High-achieving, academically driven students prepare to thrive in college and life, yet our commitment to students extends far beyond the classroom. We commit fully to the whole student, understanding and valuing each person for his or her own individual strengths. We hold that greatness emerges not from classroom rigor alone, but from a symphony of intellectual, physical and spiritual inspirations.

Academic rigor is embedded within 21st Century learning through collaboration, problem solving, technology integration, production, etc. Indeed, many students graduate with several years of college credits already completed. In preparing young adults for college and career, we work passionately to ensure all our students leave ready to achieve success while maintaining personal balance.



GLOBAL STUDENT EXCHANGE INC.  
MIDDLEBURG FL 32068-0859  
Building Relationships One Student at a Time.

Phone: 904-444-9633  
[www.gseinc.org](http://www.gseinc.org)

- Gender: Co-Ed
- Grades: K - 12
- Teacher Student Ratio: 1:9
- Upper School Student Enrollment: 480
- International Students: 84
- SSAT & TOEFL required – minimum TOEFL score = 80
- Percentage of graduates entering college: 100%
- Class Types Offered: AP -20,
- Accredited by: Southern Association of Colleges and Schools (SACS), Southern Association of Independent Schools (SAIS).



#### **Financial Info 2013/2014:**

Boarding Student Tuition: \$49,200  
(includes breakfast and lunch)  
Books: \$1,000 (estimate)  
Family Fee: \$100

Health Insurance: \$1,000  
Uniforms: \$1,000 (estimate)  
School non-refundable application fee: \$200





GLOBAL STUDENT EXCHANGE INC.  
MIDDLEBURG FL 32068-0859  
Building Relationships One Student at a Time.

Phone: 904-444-9633  
[www.gseinc.org](http://www.gseinc.org)

**VA13MS**

**FOUNDED 1878**

**GENERAL INFO**

---



The curriculum combines rigorous coursework with individualized attention and support. Students are challenged to reach their full potential as learners, building not only content knowledge but also creativity, problem-solving abilities, and analytical skills. Our wireless campus and new laptop requirement enable us to stay on the cutting edge of technology education. A full spectrum of courses, including many honors sections and thirteen Advanced Placement options, provides the flexibility to meet each student's individual needs while preparing all students for college success.

With a unique emphasis on minds, hands, and hearts, our school prepares young women and men for success in college and life. Distinguished by a rigorous and supportive program, talented faculty and staff, meaningful leadership opportunities, and small classroom settings, our congenial community builds responsible citizens, insightful thinkers, and compassionate individuals.

**Be a part of our historic Victorian Gothic buildings and pristine 1,600-acre campus.**







GLOBAL STUDENT EXCHANGE INC.

MIDDLEBURG FL 32068-0859

Building Relationships One Student at a Time.

Phone: 904-444-9633

[www.gseinc.org](http://www.gseinc.org)



- Gender: Co-Ed
- Grades: 8 - 12
- Teacher Student Ratio: 1:6
- Total Student Enrollment: Approx 150
- Percentage International Students: 30%
- ESL: Available
- AVG SAT: 1600
- Percentage of graduates entering college: 100%
- Class Types Offered: AP - 14
- Accredited by: Virginia Council for Private Education  
Virginia Independent Schools (VAIS)

Tuition is often referred to as a **“Comprehensive Fee.”** This fee includes most everything, with the exception of textbook expenses, school supplies, testing and special program costs. Among the items included in the Comprehensive Fee are:

- Tuition
- College advisory services
- Student accident insurance
- Nursing staff attention when needed
- Food services (three meals a day for boarders, mid-day meals for day students)
- Most enrichment opportunities/trips
- Life skills presentations
- Individualized and group help sessions with teachers
- Most athletic equipment and uniforms

Dress code is casual. **Admission Deadline: 15 February – Rolling**



GLOBAL STUDENT EXCHANGE INC.  
MIDDLEBURG FL 32068-0859  
Building Relationships One Student at a Time.

Phone: 904-444-9633  
[www.gseinc.org](http://www.gseinc.org)

## VA130A

## FOUNDED 1878

## GENERAL INFO

---



A coeducational, boarding/day school committed to excellence in education and adolescent development in a non-military setting. The mission is to offer a safe, secure, nurturing environment for girls and boys needing a change in school, peer, community, or family relationships. It provides a structured college-preparatory program to students in grades 8-12. Our curriculum challenges the brightest student and encourages those who are unmotivated, who are underachieving, or who are experiencing difficulties in their school setting.

- Gender: Co-Ed
- Grades: 8 - 12
- Teacher Student Ratio: 1:10
- Total Student Enrollment: Approx 130
- Percentage International Students: 17%
- ESL: Available
- AVG SAT: N/A
- Percentage of graduates entering college: 100%
- Class Types Offered: AP - 4
- Accredited by: Virginia Association Independent Schools (VAIS)  
member of the National Association of Independent Schools, The Southern Association of Independent Schools, The Association of Boarding Schools, and The Small Boarding School Association.



GLOBAL STUDENT EXCHANGE INC.  
MIDDLEBURG FL 32068-0859  
Building Relationships One Student at a Time.

Phone: 904-444-9633  
[www.gseinc.org](http://www.gseinc.org)



**Dress code = Formal**

**Application deadline: 15 January**



GLOBAL STUDENT EXCHANGE INC.

MIDDLEBURG FL 32068-0859

Building Relationships One Student at a Time.

Phone: 904-444-9633

[www.gseinc.org](http://www.gseinc.org)

## VA13RMA

## FOUNDED 1892

## GENERAL INFO

---

A co-ed college-preparatory AND military school of choice in the world for families seeking a values-based, academically challenging, structured environment which develops students of academic achievement, integrity, leadership, and responsible citizenship, prepared for success in life. We combine the best parts of a college-prep boarding school and a military school.

Our positive interaction and personal attention inspires the students' curiosity and confidence to learn throughout their personal and professional lives. We believe that the personal attention of the teacher makes the difference in the classroom. We believe parents, teachers, and administrators help students succeed by working together on academic aspirations, leadership, self-reliance, character development and service to others. We heartily believe students do their very best when they are known, respected, and encouraged.







GLOBAL STUDENT EXCHANGE INC.  
MIDDLEBURG FL 32068-0859  
Building Relationships One Student at a Time.

Phone: 904-444-9633  
[www.gseinc.org](http://www.gseinc.org)

- Gender: Co-Ed
- Grades: 6 - 12
- Teacher Student Ratio: 1:9
- Total Student Enrollment: Approx 358
- Percentage International Students: 23%
- ESL: Available
- AVG SAT: 1593, ACT: 22
- Percentage of graduates entering college: 95%
- Class Types Offered: AP - 15
- Accredited by: Southern Association of Colleges and Schools (SACS), Virginia Association Independent Schools (VAIS)



**Dress code = formal**

**Application deadline: 1 March - ROLLING**



GLOBAL STUDENT EXCHANGE INC.  
MIDDLEBURG FL 32068-0859  
Building Relationships One Student at a Time.

Phone: 904-444-9633  
[www.gseinc.org](http://www.gseinc.org)

## **WVA13LS**

## **FOUNDED 1814**

## **GENERAL INFO**



Founded in 1814, the school is a private, independent day and boarding school for students in grades 5 through 12, we offer a college preparatory curriculum that combines the traditional values of hard work, respect, honor, honesty, and self-discipline within a challenging academic program designed to unlock the potential of each student.

The family-like atmosphere helps students grow and develop under the guidance of faculty members who know them by name and care about their future. Whether it happens over lunch, dinner or in evening study hall, learning never ends.

Our school is a place where life-long friendships between students and faculty are formed. Student uniforms are not to encourage conformity, but to ensure that students are known for their unique ideas and abilities. We are a school where long-forgotten traditional values live on in our everyday curriculum.

With 100% college placement, our record as an excellent college preparatory academy speaks for itself. We understand that there is something more to education than test scores and college acceptance letters. Every day, our students live many of life's most important principles: responsibility, commitment, time management, sportsmanship, maturity, and even disappointment.



GLOBAL STUDENT EXCHANGE INC.

MIDDLEBURG FL 32068-0859

Building Relationships One Student at a Time.

Phone: 904-444-9633

[www.gseinc.org](http://www.gseinc.org)

- Gender: Co-Ed
- Grades: 7 - 12
- Teacher Student Ratio: 1:8
- Total Student Enrollment: Approx 450
- Percentage International Students: 10%
- ESL: NOT Available
- AVG SAT: 1740
- Percentage of graduates entering college: 100%
- Class Types Offered: AP - 16
- Accredited by: North Central Association of Colleges and Schools, The Independent Schools Association of the Central States.



**Application Deadline: 10 December, 15 February - ROLLING**



GLOBAL STUDENT EXCHANGE INC.  
MIDDLEBURG FL 32068-0859  
Building Relationships One Student at a Time.

Phone: 904-444-9633  
[www.gseinc.org](http://www.gseinc.org)

## CA13VS

## GENERAL INFO

*A coed non-sectarian private school*



*Our mission is to empower and enable all students to become:*

- *Enthusiastic life-long learners*
- *Creative problem solvers*
- *Effective communicators*

*We offer students an engaging curriculum, superior instruction and numerous opportunities to practice and to apply learned concepts. Students are given the challenge and the chance to excel. We expect all students to become independent, responsible role models in the community and when they leave to be equipped with the skills to easily adapt to all the challenges and changes they will face in university and the world beyond the classroom*

- Gender: Co-ed
- Grades: Pre K - 12
- Teacher Student Ratio: 1:12
- Total Students: Approx: 387
- Percentage International Students: 5%
- Percentage of graduates entering college: 100%
- Class Types Offered: College Prep, AP - 20
- ESL: Not Available
- Accredited by: Western Association of Schools & Colleges (WASC)





GLOBAL STUDENT EXCHANGE INC.  
MIDDLEBURG FL 32068-0859  
Building Relationships One Student at a Time.

Phone: 904-444-9633  
[www.gseinc.org](http://www.gseinc.org)

## **Application Deadline: February 1<sup>st</sup>**

*International tuition must be paid in one installment before the fall semester begins.*

*A coed non-secretarian private school for preschool to high school students with optional dormitories for high school students.*

*Located in Southern California, our beautiful **9 acre** campus features a landmark 6 story main bulding that houses our elementary, middle and high school.*

*Labs include electrical, chemical, physics, computer, biology, and **Southern California's largest marine biology lab**. Other specialized learning environments include orchestra and dance studios, library with computers, a courtroom, a 99 seat theater, 2 art studios, and a photography studio.*

***100% of our students are accepted to college (including: Berkeley, Stanford, Duke, Cornell, Wesleyan, Columbia, Amherst, John Hopkins, UCLA, Carnegie Mellon, Penn State, Pepperdine and USC). 100% of our art students are accepted to their first choice college.***



There is a dormitory for male and female high school students on campus. With 16 spacious rooms, a large television/game room, computer Skype room, dining hall, full kitchen, patio, Wi-Fi access and laundry room with “fluff n’ fold” service, the dormitory provides a college atmosphere no other high school can offer. If you prefer, we can also provide a host family that will welcome students into their home. Few schools can offer you that choice.