

PATTERN FOR PET MATS

You will need 2 fabrics (front and back) 12 ½ by 18 ½

1 piece of batting 12 ½ by 18 ½ (you can cut the batting 12 by 18 to cut down on the bulk but will need to be centered on one of the fabrics leaving a ¼ inch all the way around)



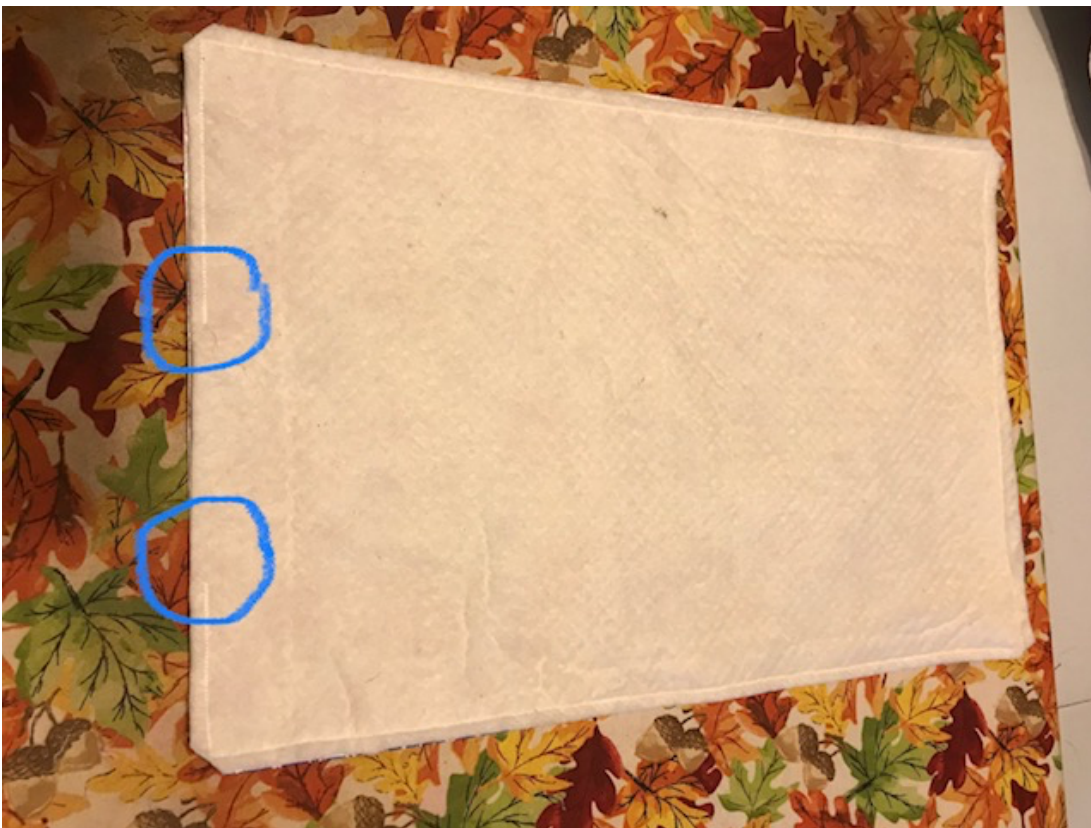
Place the 3 pieces in this order. 2 fabrics right sides together and the batting on top. This is so when you flip inside out the batting will be on the inside.



Pin or click everything together and sew ¼ inch all the way around leaving a small opening



Backstich at the beginning and end leaving an opening for turning



Reach in between the 2 fabrics and turn the mat inside out paying attention to the corners. Use a chopstick or any other tool to get the points turned out and flat. DO NOT REACH INBETWEEN FABRIC AND BATTING. You will end up with the batting on the outside but reversed.



Top stitch all the way around 1/8th of an inch and turn the opening into itself so the top stitch catches the fabric and closes up the mat.



Sew a X from corner to corner in both directions to stabilize the batting on the inside.

You are done 😊

