

Floor Quartz Metalplate Plus Florundum

Color Chart

Standard Colors and Special Architectural Colors



Suggested Specification:

Colored Dry Shake Concrete Hardeners

Designated concrete flatwork shall be colored and hardened with *(Floor Quartz) (Florundum) (Metalplate Plus)* as manufactured by Metalcrete Industries, Cleveland, Ohio, 440-526-5600 (800-526-5602). Color shall be _____ (as selected by the architect).

Floor Quartz is a natural aggregate colored hardener applied at a minimum rate of 1.5 pounds per square foot in accordance with the Metalcrete Industries technical data sheet. *Note: On diamond polished surfaces, the minimum application rate is 1.75 lbs. per square foot.*

Metalplate Plus is a non-oxidizing, metallic aggregate color concrete hardener applied at a minimum rate of 2.0 pounds per square foot or in accordance with Metalcrete Industries technical data sheet.

Florundum is a marble aggregate colored hardener designed to be polished and applied at a minimum rate of 1.75 lbs. per square foot in accordance with Metalcrete Industries Technical data sheet.

Note: The colors shown on this card are were digitally created and printed to approximate the actual finished colors of the Metalcrete toppings as accurately as possible. However, variances in ink, paper texture, and printing technique will affect the final appearance of the colors shown. A physical specimen of the color chosen should be requested before ordering material.

When applying color toppings, variables such as application procedure, finishing techniques, climactic conditions and/or the water-cement ratio of the base concrete may affect the final appearance and color intensity of any shake-on concrete surface hardener. For actual in-place appearance Metalcrete Industries recommends requesting a physical specimen of the color chosen or placement of a representative test slab prior to actual concrete slab placement. Metalcrete Industries makes no warranty as to exact duplication of the color shown on the color chip due to variables beyond our control.

Metalcrete dry shake floor hardener surfaces which are subjected to grinding and/or diamond polishing will vary in color due to the degree of aggregate exposure.

Metalcrete Industries • 4133 Payne Avenue • Cleveland, Ohio 44103

Phone: (440) 526-5600 • Toll-Free: (800) 526-5602 • Fax: (440) 526-5601 • Website: www.metalcreteindustries.com

Standard Colors



Light Reflective Code S2



French Gray Code S1



Battleship Gray Code S1



Black Code S1



Green Code S3



Tile Red Code S1



Terra Cotta Code S1



Brown Code S1

Architectural Colors



Pine Green Code A2



Pecan Code A1



Beige Code A1



Misty Forest Code A2



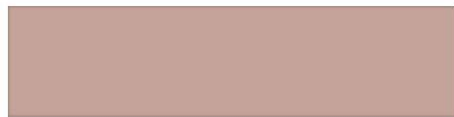
Taupe Rose Code A1



Easy Buff Code A1



Teal Code A3



Mauve Burgundy Code A1



Tucson Tan Code A1



Powder Blue Code A3



Light Mauve Code A1



Honey Cream Code A1



Continental Blue Code A4



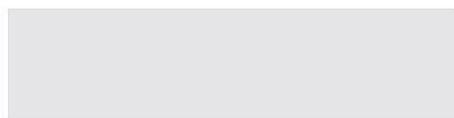
Venetian Coral Code A1



Orange Blossom Code A1



Blue Stone Code A3



Silver Gray Code A1



Mustard Fair Code A1



Platinum Code A1



Stone Gray Code A1



Caution Yellow Code A1