

# THE GOLDEN THREAD

## ACADEMY

BUILDING CLINICAL WISDOM.  
STRENGTHENING HUMAN OUTCOMES.



THE DOCUMENTATION GHOST



THE RISK BELL



THE SCOPE SHIELD



### CHIEF COLLINS

CLINICAL ARCHITECT.  
MENTOR. STRATEGIST.  
BUILDER OF SYSTEMS  
THAT HEAL.



### ASHA REYNOLDS

TRAINEE.  
OBSERVANT. CAPABLE.  
READY TO LEARN.  
BUILT TO MAKE  
A DIFFERENCE.

EVERY JOURNEY  
BEGINS WITH INTENT.

ISSUE 1:

# THE DOORWAY



ASHA:  
"So this is where  
documentation  
starts?"



CHIEF COLLINS:  
"No."



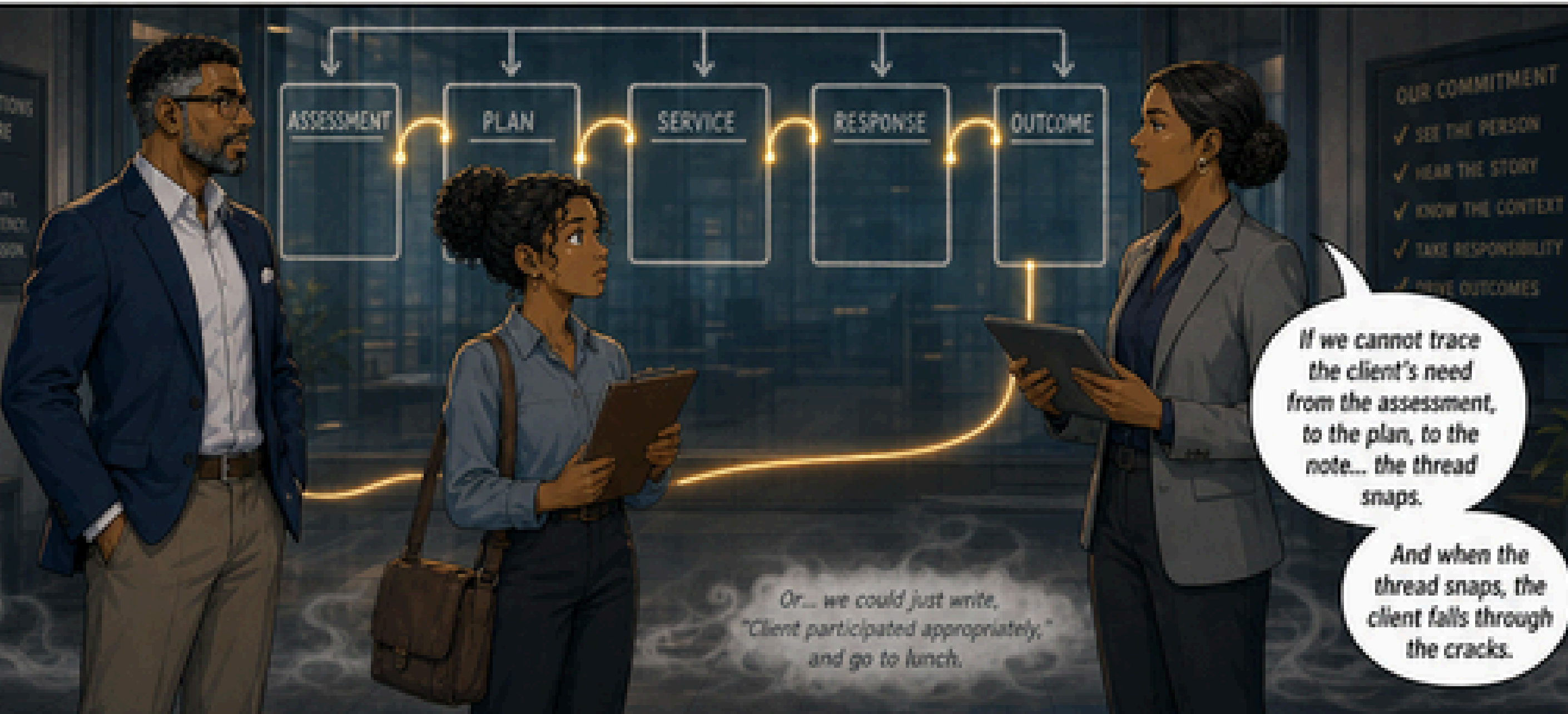
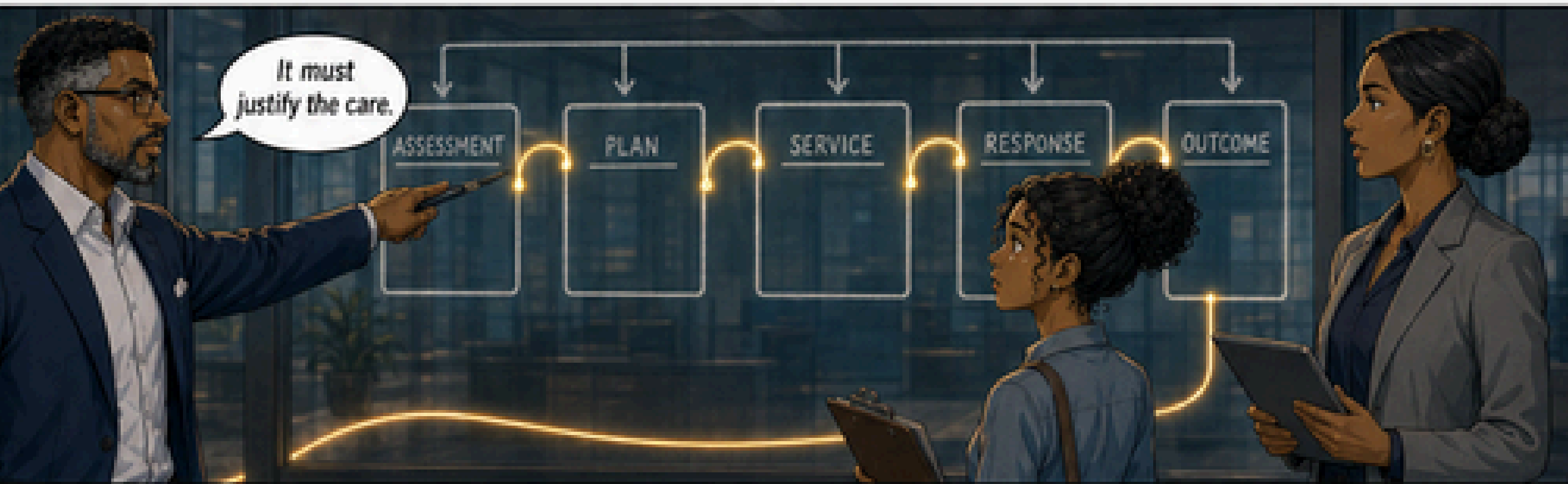
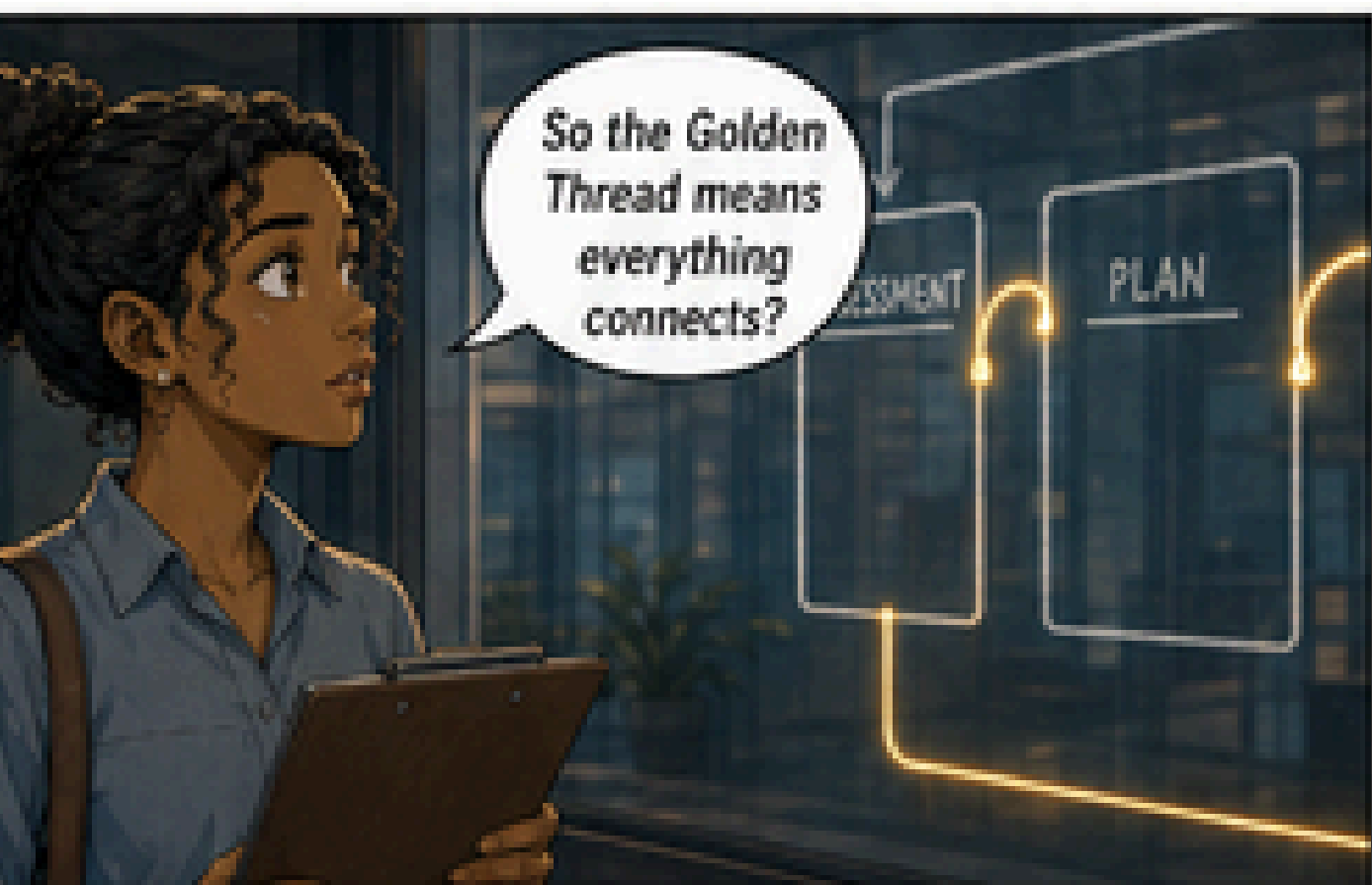
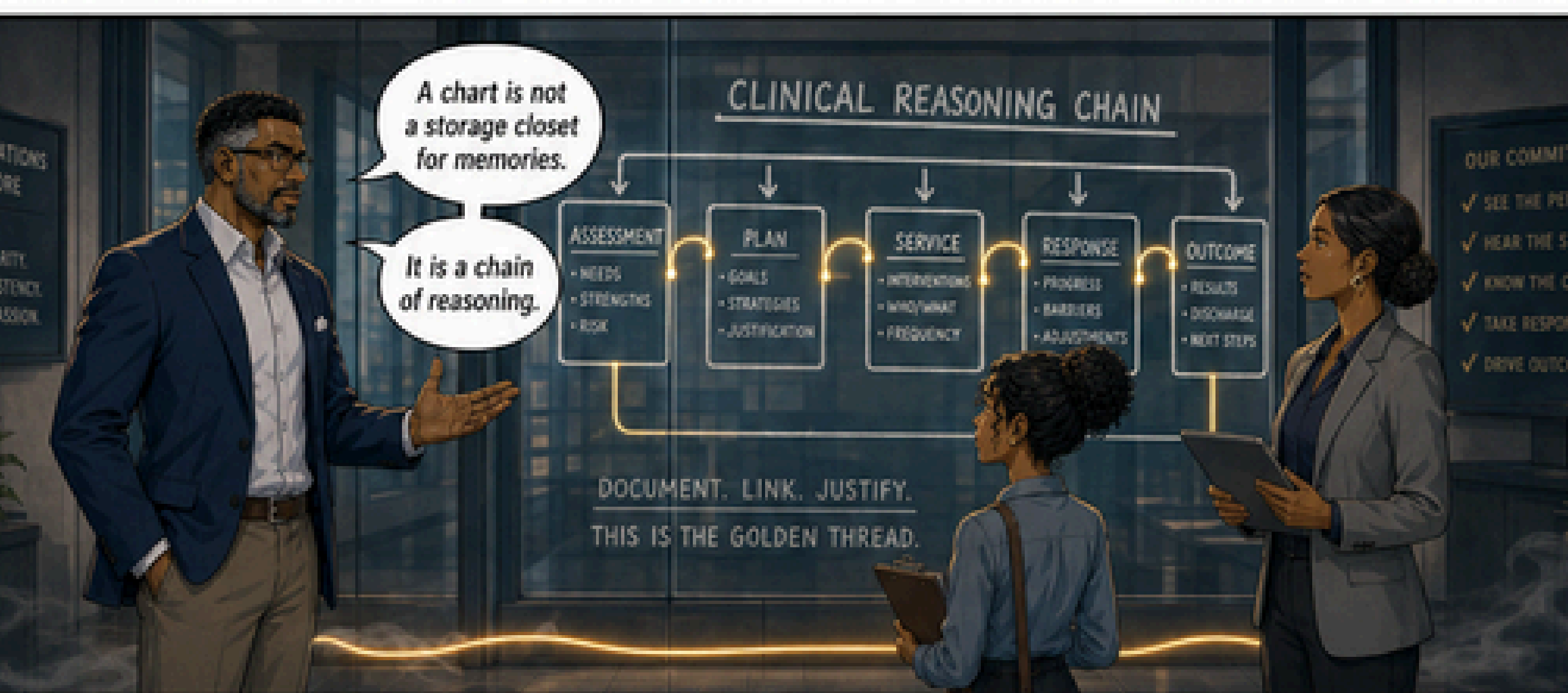
ASHA:  
"No?"



CHIEF COLLINS:  
"That is where  
paperwork starts."

CHIEF COLLINS:  
"Documentation starts  
when the system accepts  
responsibility for what it  
sees, hears, and knows."

SYSTEMS OF CARE.  
STANDARDS OF TRUST.  
OUTCOMES THAT HEAL.





I need to understand what kind of safety you need today.

**ASHA:**  
This is not checking boxes.



Are you having thoughts of harming yourself or someone else?



Are you in withdrawal?

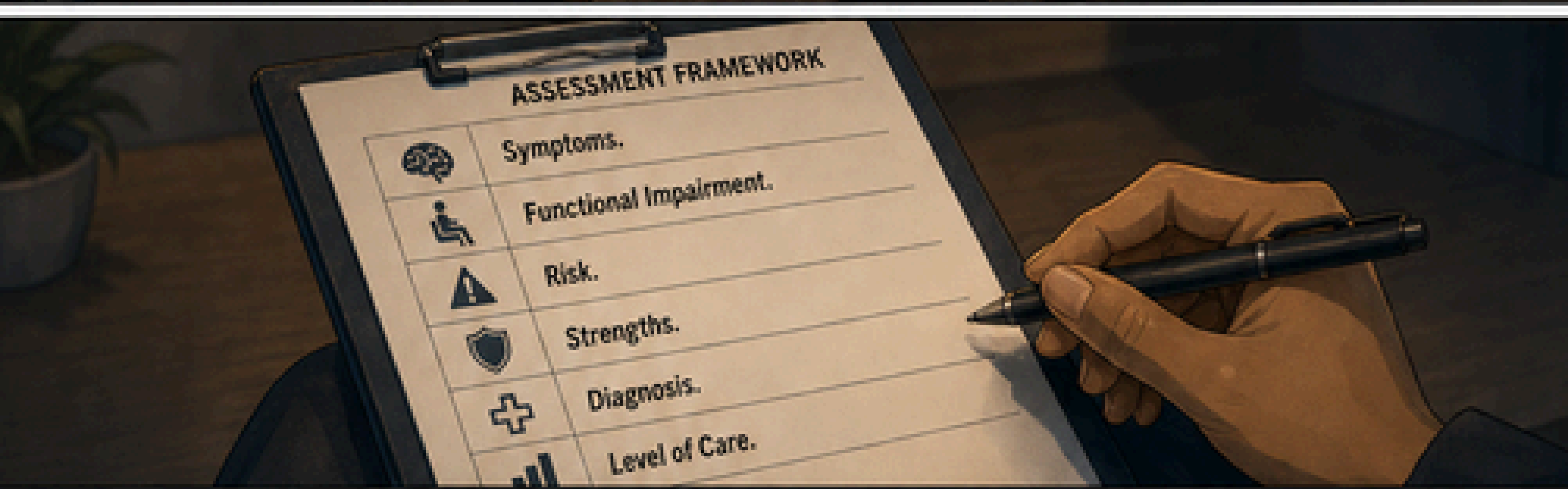
Is there anywhere you feel unsafe returning tonight?









No. This is sweeping for landmines. We move to the triage line.



I want to understand what brought you here, what the pain has cost you, and what we need to stabilize first.



ASSESSMENT FRAMEWORK	
	Symptoms.
	Functional Impairment.
	Risk.
	Strengths.
	Diagnosis.
	Level of Care.



So assessment is where we write down the story?



Not just write it down.

Organize it.

A strong assessment gives the treatment plan solid ground to stand on.









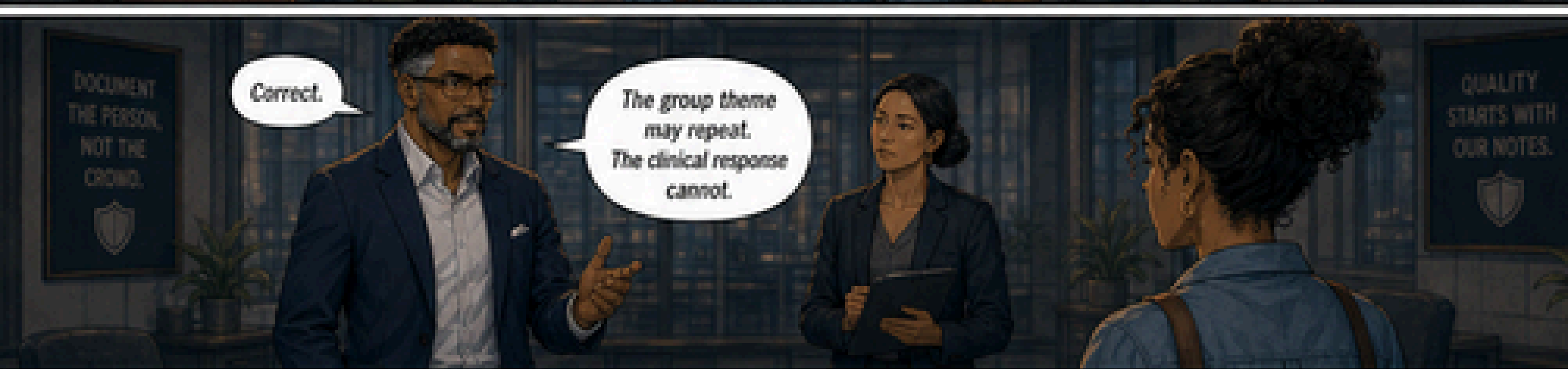
One group happened once.



But twelve people experienced it differently.



I cannot write the same note twelve times.



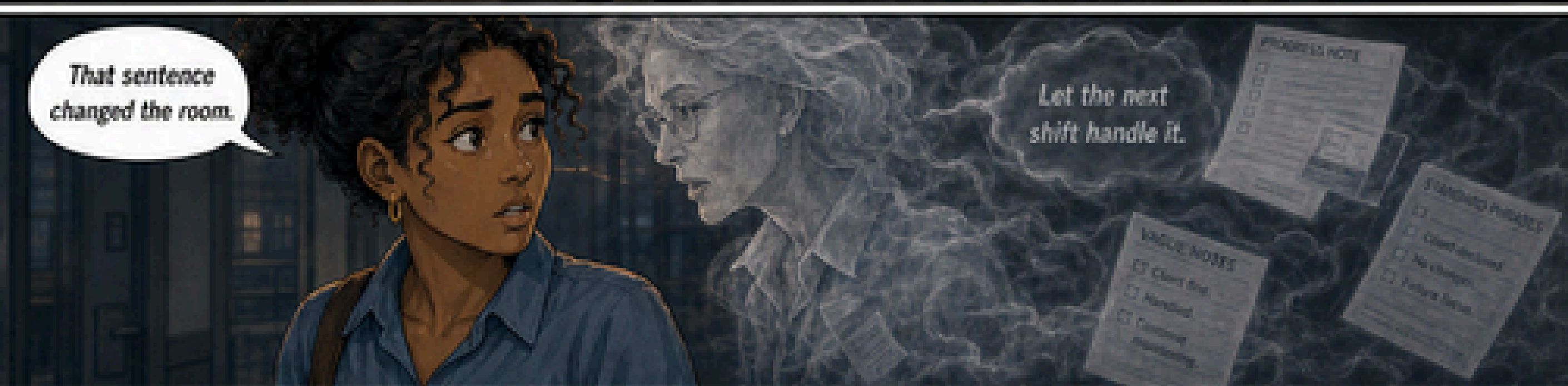
Correct.

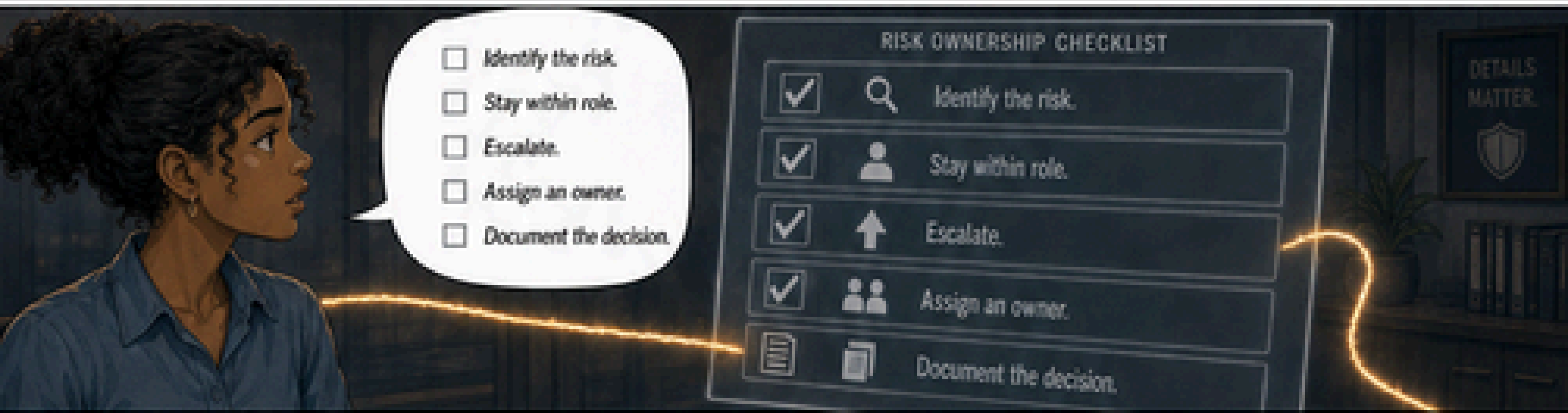
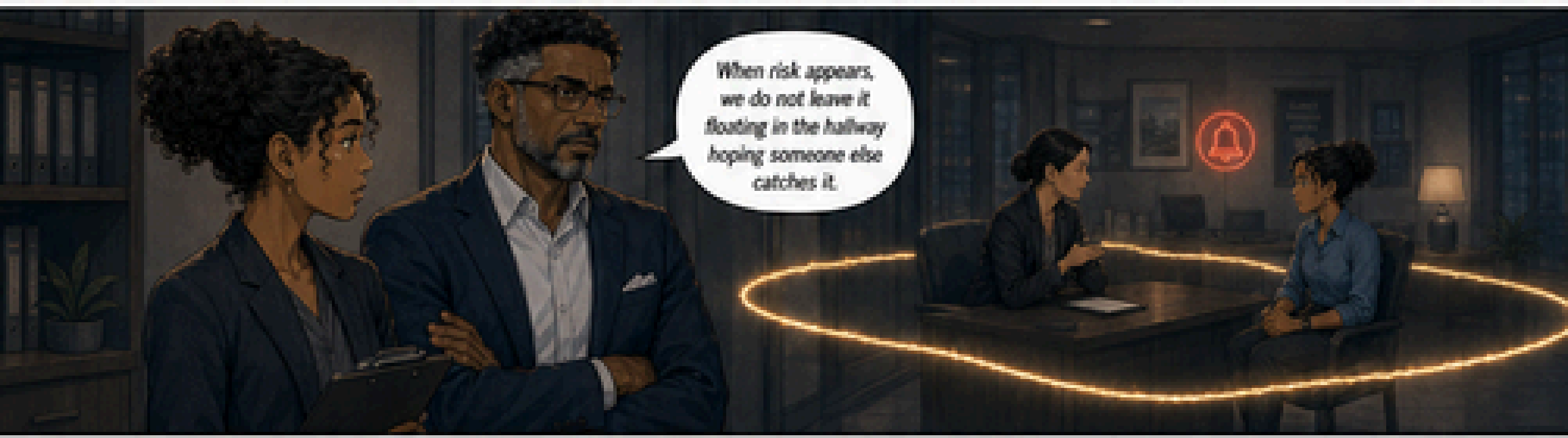
The group theme may repeat. The clinical response cannot.



Or... copy, paste, and go home to your family on time...

And that is exactly how drift becomes culture. We do not mass-produce recovery.







This morning, I thought documentation started when I opened the chart.



Now I understand.

Documentation starts the second we accept the responsibility of someone's life.



What did you learn?



The thread begins at the doorway.



Protect the doorway, and the system has a chance to heal.



**NO SILENT DRIFT.  
NO UNRECORDED DECISIONS.  
NO UNDEFINED CLINICAL OWNERSHIP.**



**THE GOLDEN THREAD:  
EVERY STEP. EVERY NOTE.  
EVERY PERSON. CONNECTED.**

Next: Issue 2 – The Assessment Room