

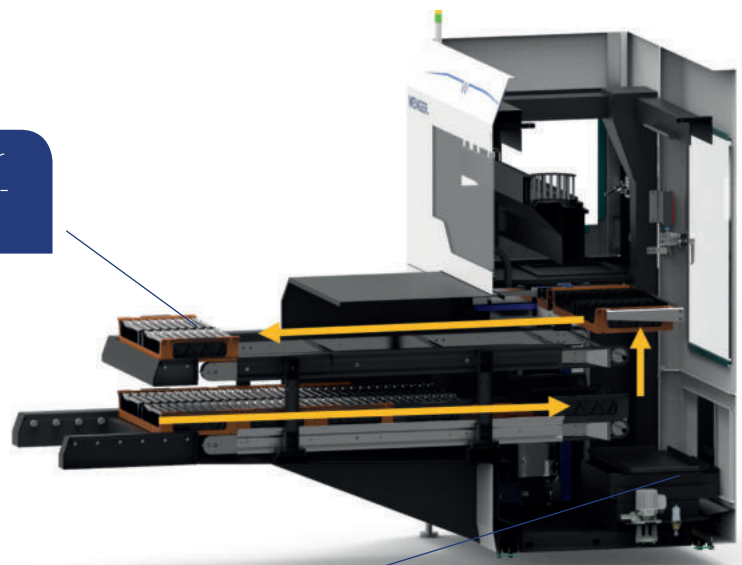


WeStep 650

The compact all-rounder

Highlights

The pallets are pushed in on the lower belt. Via a lift system the pallets are indexed and placed on the upper belt.



The **SPC/NOK** drawer is accessible from the rear.

Quick-change gripper heads

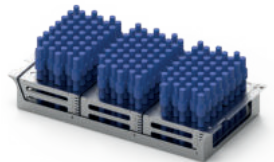
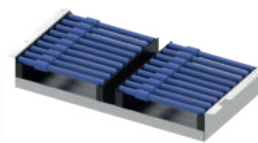


Chuck part gripper

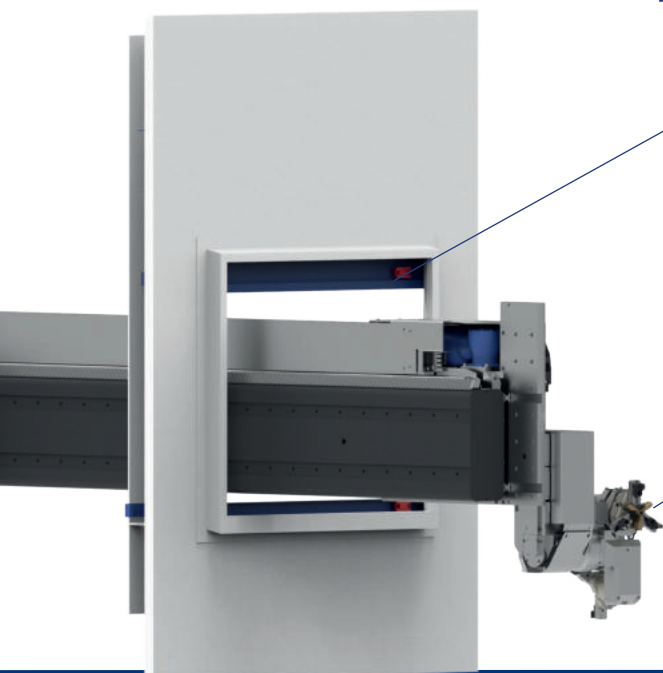


Shaft gripper

Quick-change pallet inserts for:
chuck parts | shaft parts | stationary shaft parts



Safe separation of loader and machine compartment with loading hatch.



Quick-change tooling for chuck and shaft parts.

WeStep 650 Product Description



The WeStep 650 loads shaft parts up to 650 mm length and chuck parts up to 260 mm diameter.

The parts are fed in pallets, which are drawn in and processed by a chain conveyor. Using NC technology, the pallet is indexed under the line gantry. When the pallet has been processed, the pallet is placed on the upper finished parts conveyor and removed at the operator's side.

Thanks to flexible and quickly convertible grippers and pallets, the WeStep is particularly suitable for small batch sizes.

Features:

- Process integration: Processes such as blowing-off, measuring, and deburring can be integrated in a small space. For more complex processes it is possible to enlarge the cell on the right side with an extension module.
- Fast changeover to other part types: thanks to our fast changeover system and image-guided changeover wizard you can switch to other part types in practically no time.

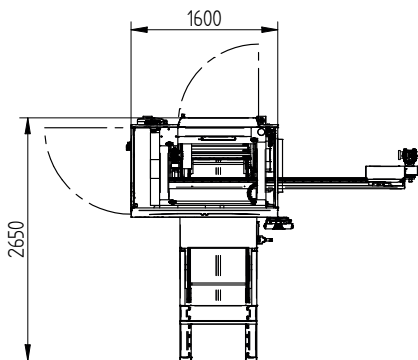
WeStep 650 Technical Specifications

Technical Specifications	WeStep
Number of pallets on conveyor	5
Autonomy example	
Chuck part Ø 80 L80	75 pcs
Shaft part Ø40 L170	40 pcs
Pallet size (internal dimensions)	336x656 mm
Chuck part max. dimension	Ø260 L100 (up to 5 kg)*
Shaft part max. dimension	Ø100 L650 (up to 15 kg)*
	* Machine-specific limitations. Larger dimensions and higher weights on request.
Workpiece changeover time	
Double gripper	approx. 6-10 s
Single gripper	approx. 15-20 s
	Without machine clamping times, depending on part weight
Traversing speeds	up to 4m/s
Dimensions	
Floor plan	1600x2650 mm
Height	2150 mm
Weight	Approx. 2.0 t
Connection information	
Air pressure	6 bar
Air consumption	50 L/min
Voltage	3x400 VAC (3LNPE 50 Hz)
Backup fuse	25 A
Max. power consumption	5 kW

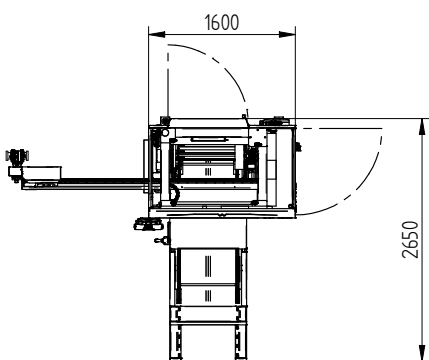
Footprint

(WeStep without machine tool)

WeStep L



WeStep R



Typical
WeStep 650
workpieces



Wenger Automation & Engineering AG

Sandgrubenstrasse 14
8409 Winterthur
Switzerland

+41 52 245 19 20
automation@wenger-ag.ch

www.wenger-ag.ch

UK AGENT

DF Precision Machinery Ltd
Bridgemere Farm,
Mowsley lane, Walton,
Lutterworth
LE17 5RE
England

+44(0) 116 201 3000
sales@dfpmach.com
www.dfpmach.com