

“Do chiropractors mean that my “health problem” could have been caused by a breakdown in spinal mechanics?” Yes, but the process of abnormal nerve function and any health problem involves the whole body. By the time a problem becomes apparent, the sequence of nerve involvement can move through an infinite number of combinations between nerve networks long before symptoms appear. “It would be easier to count the stars than to count the number of pathways between nerve networks.”

Your chiropractor is more interested in determining whether the process can be reversed through reestablishment of proper spinal mechanics. The “miracle” of chiropractic is that in most instances the process can be corrected through the proper application of the chiropractic art of adjusting spinal segments – reversing the process back onto nerve networks where “abnormal” commands are modified back to “normal”.

There is a world of difference between building health and fighting disease.

The power that made the body heals the body. It happens no other way.

Copyright 2012 LHC, Inc

WHO ARE WE?

**Dr. Stevan Walton, D.C., F.I.C.C.
Dr. Dianna Walton, D.C., R.N.
Dr. Amanda Burns, D.C.**

Have owned and operated the LAHAINA HEALTH CENTER for more than 25 years. We are the longest-established Chiropractic Clinic in West Maui. Sometimes long clinical experience means antiquated methods, but not at the Lahaina Health Center. We have invested in cutting-edge technology to apply our clinical experience in the most effective way possible.

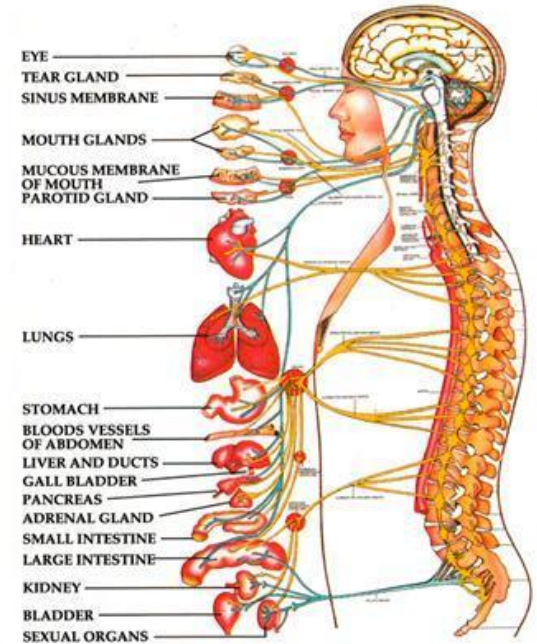


**180 Dickenson Street, Suite 204
Lahaina, Maui 96761
(808) 667-6268**

It’s your choice! If you believe we can help you reach your goals, then come and feel the difference that long experience combined with sophisticated technology can make for you.

**For more information visit:
www.lahainahealthcenter.com**

Health Through Chiropractic



NERVES TO ORGANS

**LAHAINA
CHIROPRACTIC
CENTER**

**Dickenson Square Building
180 Dickenson Street, Ste 204
Lahaina, Maui, Hawaii 96761**

(808) 667-6268

What is Chiropractic?

Nerve Networks Command Cellular Activity in Health & Disease

Your chiropractor is interested in one thing – your health – and how to restore it as quickly as possible. He is not particularly fascinated with the idea that disease is a separate “something” apart from health, which first must be identified and given a proper name before it can be treated. Instead, he views disease as a “reflection” of a more primary distortion in the correct “image” of normal held within delicate nerve networks.

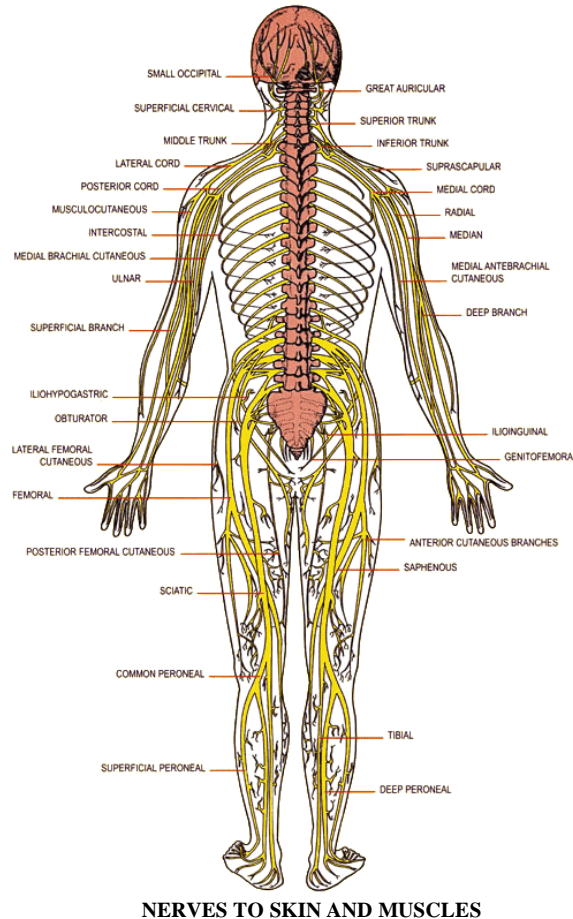
These nerve networks act as the “guidance and control systems” for the integration of every activity in the body. It is normal for nerve networks to transmit intelligent commands — from brain to tissue and back to brain again — to regulate, not only the function of every organ, but the very life regenerating processes of every cell in the body. Whatever disturbs any one of these nerve networks — disturbs the tissue directly under its command.

Your chiropractor knows from experience that “information” stored within nerve networks can be distorted by the effects of excessive stress. This stress can be imposed directly on the nerve elements contained within the spinal cord, or from stress imposed at either end of their circuit between brain and tissue cell. The chiropractor recognizes *three main kinds of stress* which can cause these nerve commands to function abnormally.

MENTAL

First, stress may originate in the human mind – with its capacity to unleash tremendous power through its emotions such as hate -- fear –

anxiety, placing our bodies on an unnecessary “alert” status. Continued too long, exhaustion sets in throughout millions of nerve control networks. Continued beyond exhaustion, some nerve networks will be damaged to such an extent that they will no longer send out appropriate responses to normal stimuli.



Like a mirror distorted, the affected nerve networks, from that point onward, only serve to confuse reality.

CHEMICAL

The second factor is chemical. Simply stated, chemical substances (**drugs**) – or lack of them (**foods**) – modify tissue cell function. Unnatural chemical modification of cellular functions will eventually derange the function of nerve networks which control them changing the commands of these networks into meaningless “babble”.

PHYSICAL

The third factor is injury. When a thermal or mechanical force is greater than the body can resist, cellular tissue and associated nerve networks which control life processes will be injured or destroyed. Bone tissue protects the body from suffering serious damage over a wide range of physical force. Through one bone acting against another – a broad avenue is opened for the dissipation of mechanical force. However, when forced beyond the limits of its structure, bone will become the “leading edge” of any mechanical intrusion.

In any event, **the spinal column, whose primary job is to protect the delicate nerve networks** (which it surrounds with its twenty-six separate rings of bone) will invade the very area it was designed to protect. Such an invasion, occurring in a split second from an overwhelming force, will “shock” nerve elements into behavior patterns not “normal” for the coordinated movement of the spinal column itself.

The normal smooth movement of the spinal column as a whole unit now becomes impossible. With this, even normal movement can become an overwhelming force extending injury to nerve elements far removed from its starting point.