



SL-478 RUSTIC BROWN*

RENAISSANCE I

lychee

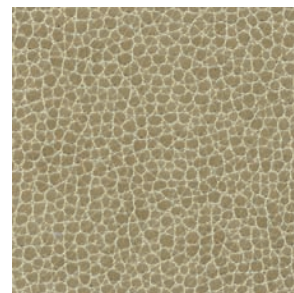
DUAL TONE TEXTURE



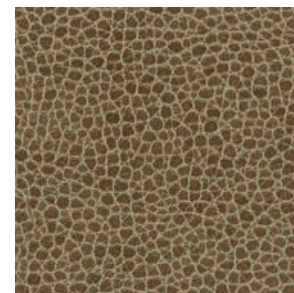
SL-401 WHITE*



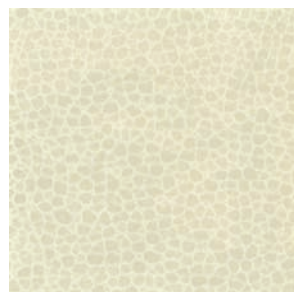
SL-405 EGGSHELL*



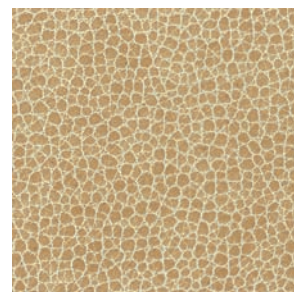
SL-420 ECRU



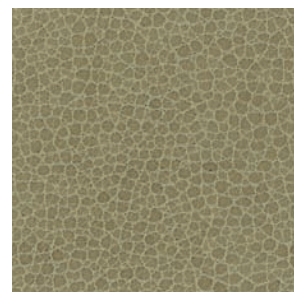
SL-412 BAMBOO



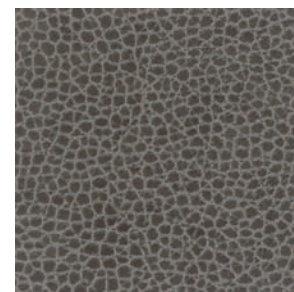
SL-404 VANILLA



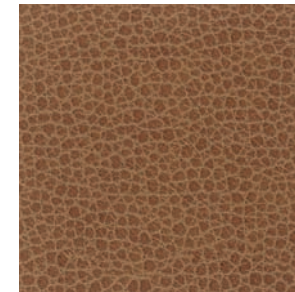
SL-422 HONEY*



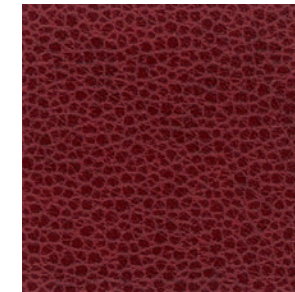
SL-413 RYE*



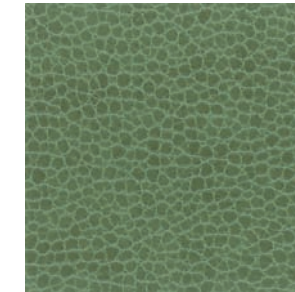
SL-472 WOODLAND



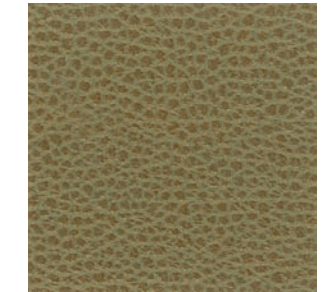
SL-411 SADDLE



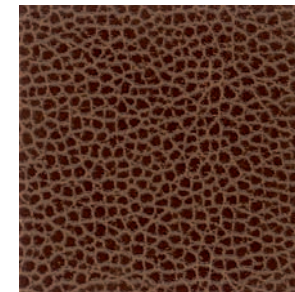
SL-461 SALSA*



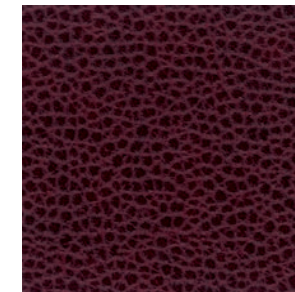
SL-440 CELERY



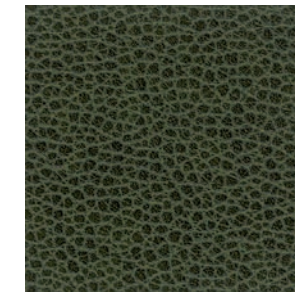
SL-421M LT. GOLD



SL-470 ACORN



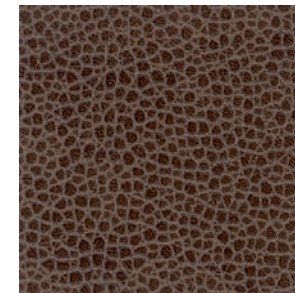
SL-462 CHIANTI*



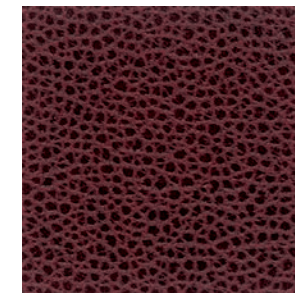
SL-441 OLIVE OIL*



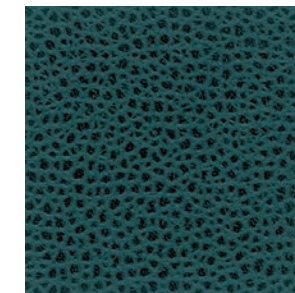
SL-474M BRONZE



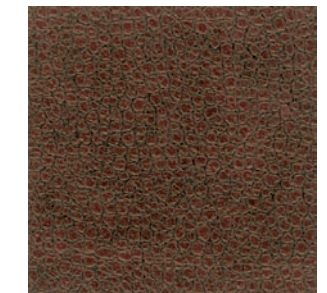
SL-476 RAWHIDE*



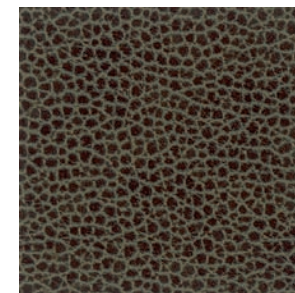
SL-473 BORDEAUX



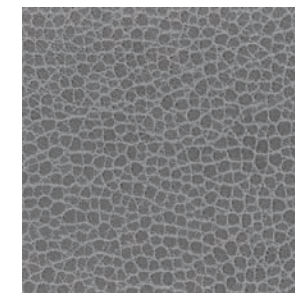
SL-442 DEEP FOREST*



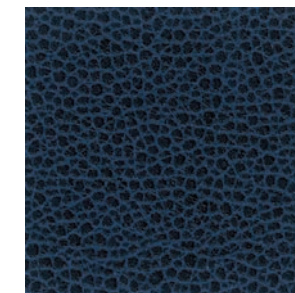
SL-471M COPPER



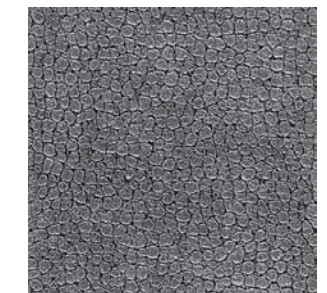
SL-475 CHESTNUT



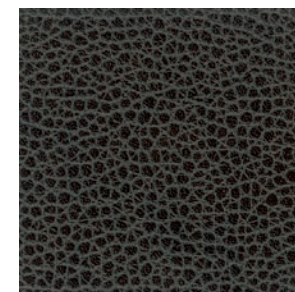
SL-451 SMOKE*



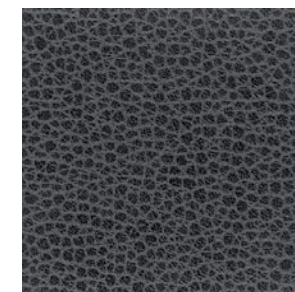
SL-480 NEWPORT



SL-450M SILVER



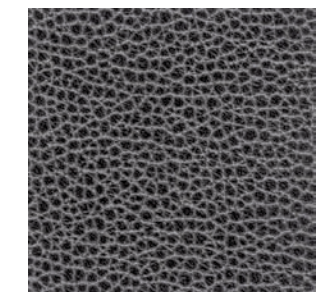
SL-477 JAMOCHA*



SL-452 STONE HEDGE*



SL-490 BLACK



SL-491 M BLACK PEARL*



lychee

RENAISSANCE I

nature friendly, naturally soft

RENAISSANCE I

lychee

DUAL TONE TEXTURE

:: SPECIFICATIONS

- . Width : 54"
- . Nominal total thickness: .036 gauge
Standard weight: 21 oz / linear yard
- . Content: Face: 100% polyurethane
Back: 100% reinforced Pollex
- . Roll Roll Length: 50 yards

:: FLAMMABILITY REQUIREMENTS*

- . CA Bulletin 117 Class 1
- . UFAC - Class 1
- . NFPA 260 - Class 1
- . BIFMA - Class A
- . IMO A.652(16) 8.2
- . Can be treated to meet FAR Specifications
- *This term and any other corresponding data refer to typical performance in the tests indicated and should not be construed to imply the behavior of this or any other material under actual fire conditions.

:: CARE & CLEANING

- . General Care: While this product is inherently stain resistant, it is important to keep it clean at all times to maintain the original look and the rich feel.
- . Stain Removal: Spot cleaning with soap and water will remove most of the everyday stains without leaving any stain of color behind. Tough, stubborn stains can be removed by a mild cleaning fluid followed by clean water rinse.

:: REVOLUTION IN FAUX LEATHER LUXURY

- . Nature friendly, PVC free product.
- . Contains no volatile compounds which are found in most vinyl-based products.
- . Supple leather touch with exceptional strength and performance.
- . Controlled 4-way stretch for excellent tailorability.

:: GENERAL CHARACTERISTICS

- . Superior wear resistance (ASTM D3597 Wyzenbeek) Exceeds 100,000 double rubs by wire screen
- . Colorfastness to light (AATCC-16/400 hours)
- . Colorfastness to cracking (AATCC-8/passes)
- . Colorfastness to chlorine bleach (AATCC-3) passes 1:10 & 1:5 bleach dilution test
- . Yarn slippage (ASTM D4034/passes)
- . Excellent breaking strength (ASTM D5034)
- . Excellent tear strength (ASTM D2262)
- . Cold crack resistant
- . Mildew resistant backing

:: SUITABLE APPLICATIONS

- . Contract interiors
- . Office
- . Restaurant
- . Hospitality
- . Healthcare
- . RV/Marine Interiors



FLOCK TEX, Inc.
200 Founders Dr.
Woonsocket, RI 02895
Tel: 401.765.2340
Fax: 401.765.4915
Toll Free: 800.556.7286
www.flocktex.com