

How to lead your cow

Lead at a comfortable pace with the animal's head held high enough for impressive style, attractive carriage, and graceful walk. Never allow a large gap to occur between your animal and the one ahead of you. Do not crowd the exhibitor ahead of you nor lead in front of an animal so it cannot be seen by the judge. Lead animal with head held high.

Registered dairy animals

Purebred registration papers filed with a Purebred Dairy Cattle Association.

Grade Dairy Animals

An animal with no breed registration

On average, how long is lactation period for a dairy cow?

When a cow gives birth to a calf, she will begin to produce milk for ~305 days. This is known as the lactation cycle. A normal lactation cycle for a dairy cow usually lasts around 10 months.

How much feed should a dairy cow consume daily?

A dairy cow consumes approximately 100-120 pounds of food per day that is in the form of low-quality human food, much of it being from industries that have no other use for the feed. This is then converted into approximately 70-80 pounds of milk that are nutrient dense and include many components of a healthy diet

Showing heifers

The hind leg nearest the judge is to be posed slightly behind the other when showing heifers.

Showing Cows or Spring Heifers

For cows and springing heifers, the hind leg nearest the judge should be far enough ahead of the opposite rear leg to allow the judge to see the fore and rear udder. The position of the rear legs should be reversed when the judge walks around to view the animal from the other side

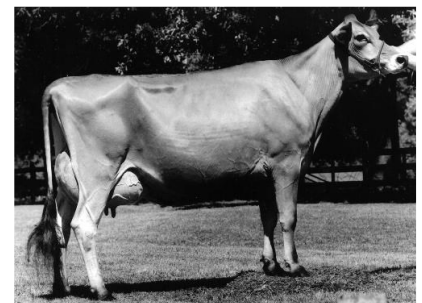
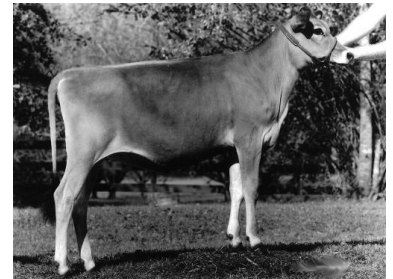
What ways to avoid milk fever in cows?

Adding anionic salts to the dry cow ration and fasting dry cows 2 weeks before calving

How much water can a lactating cow consume in one day?

If available, a lactating dairy cow will consume 30 to 50 gallons of water a day. When experiencing heat stress water intake can double making it even more important that water is provided.

Heifer– Leg Placement



Cow/Spring Heifers–
Leg Placement