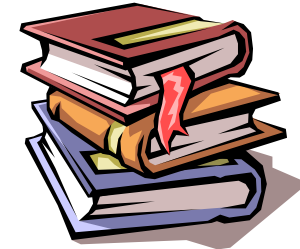


1. Describe a well-known character whilst your child draws using your description. Switch roles.



2. Using the common exception words (year 1 and year 2 list attached), make snap cards and play together. Are there any words that rhyme?

3. Make a word search using key words from a story or information text you have read.



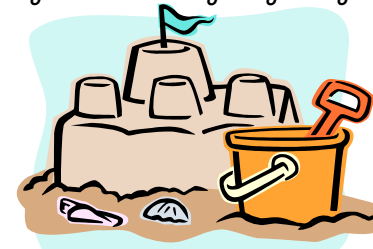
4. Use your senses at the seaside to write a seaside poem. What can you taste, smell, hear, see and feel?



5. Try to memorise the directions to school/ the shop and retell them to someone really clearly.



6. Take a trip to the seaside. What can you see? Describe and sketch some of the things you find there.



**Common Exception Words** - the, a, do, to, today, of, said, says, are, were, was, is, his, has, I, you, your, they, be, he, me, she, we, no, go, so, by, my, here, there, where, love, come, some, one, once, ask, friend, school, put, push, pull, full, house, our