

POWDURA® POWDER COATINGS

Color Reference Guide



For a Better Finish. Ask Sherwin-Williams.™

WE OFFER POWDER COATINGS...
JUST IN TIME.



The color experts at The Sherwin-Williams Company have designed this Powdura® Powder Coatings Color Selector with the latest industry color trends in mind. In fact, this color selector was designed for easy color selection based on both product finishing industry standards and market specific needs.

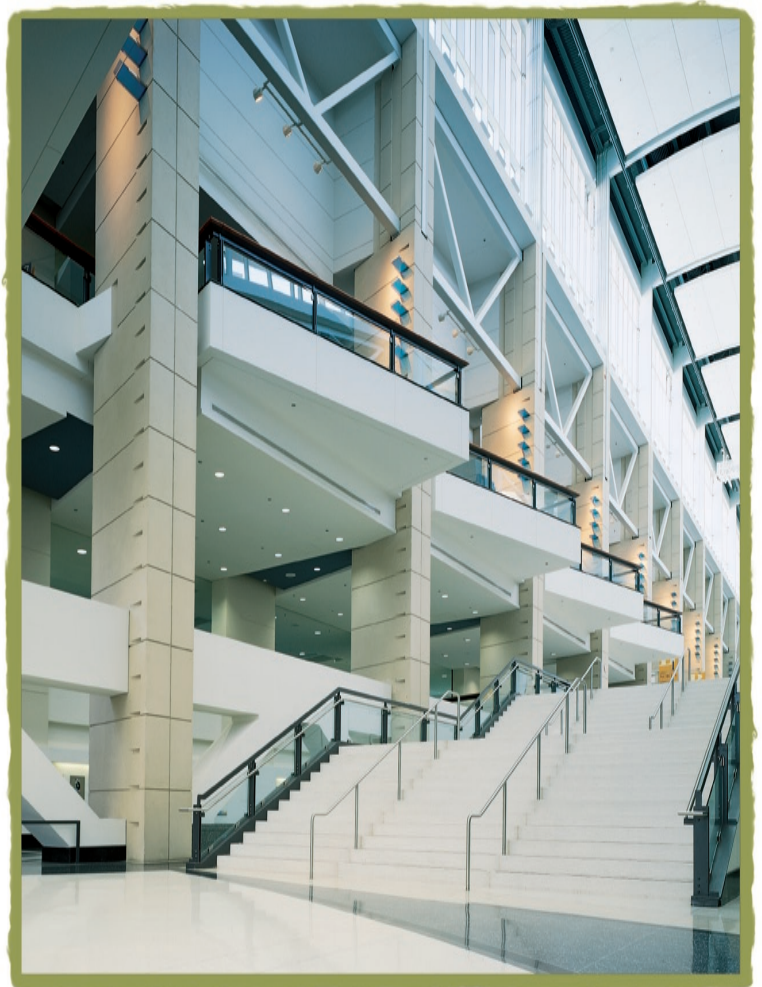
The following markets are emphasized:

- Heavy Equipment
- Electronic Enclosures
- Metal Building Products
- Metal Office Furniture



Product finishing industry standards available in Epoxy, Hybrid, Polyester and Urethane powder coating chemistries are also featured in this color selector. Additionally, functional powder coatings for applications requiring military or government specification are featured in this color selector.

With over 160 stocked colors to choose from and over 80 distribution locations across North America, your company's just-in-time supply chain needs will be satisfied.



PROVEN PERFORMANCE



POWDURA® Powder Coatings are the right choice for today's advanced engineered products.

Selecting a coating that will meet the performance demands of various products while in their service environment can be challenging.

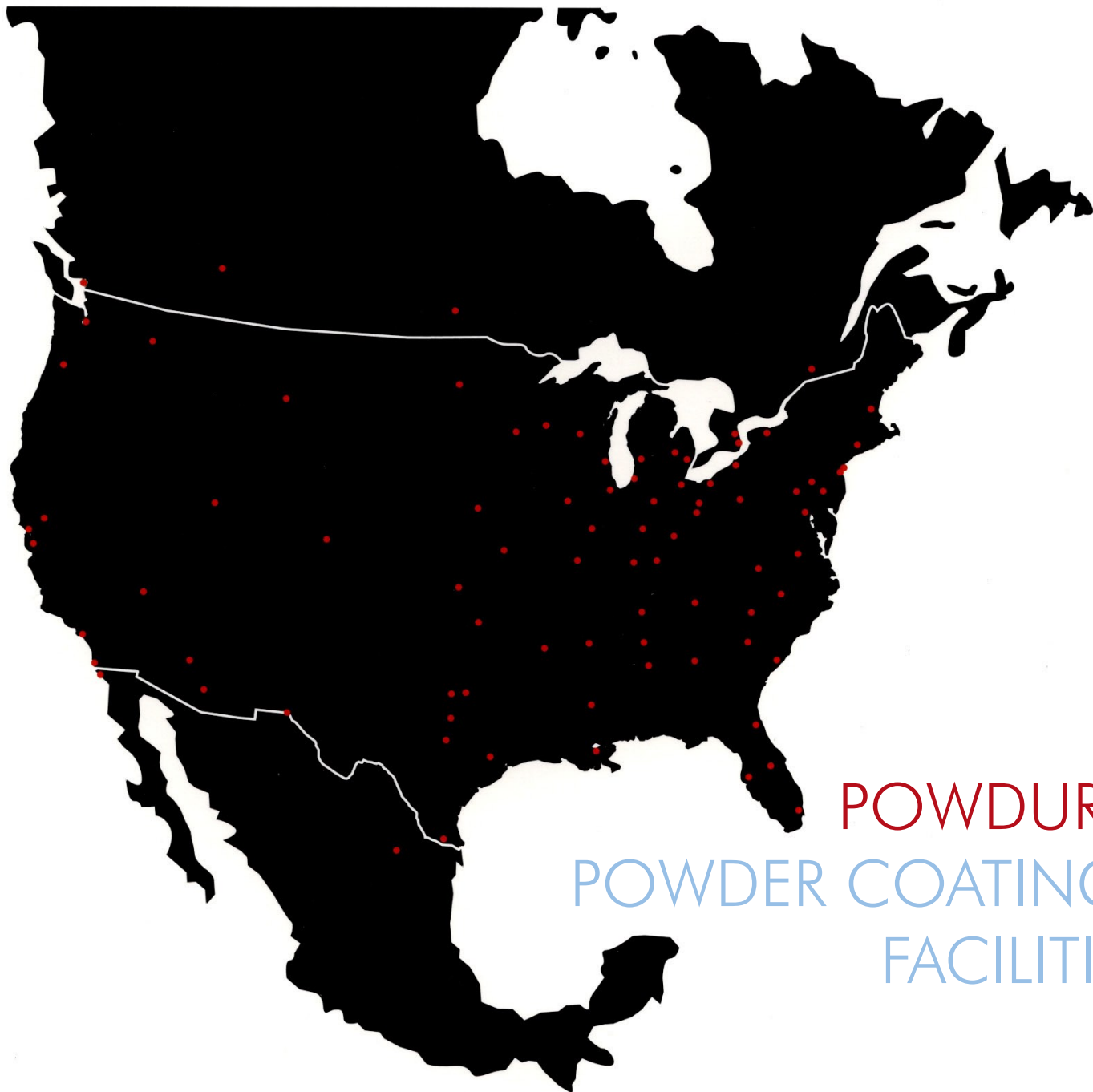
This color selector was designed to make this process easy.

A wide assortment of in-stock colors and textures along with special effect finishes are available just in time.

Whether super durable, low-cure, out-gas free, thin film, or E-cap-free, Sherwin-Williams has the right solution to insure that your performance requirements are met.

These user-friendly technologies insure that your finishing line runs at peak efficiency allowing you to finish ahead of the competition.

PERFORMANCE CHARACTERISTICS				
	Epoxy	Hybrid	Polyurethane	Polyester
Hardness	Excellent	Very Good	Fair	Good
Flexibility	Excellent	Excellent	Excellent	Excellent
Over-bake Stability	Fair	Good	Very Good	Excellent
Exterior Stability	Poor	Poor	Excellent	Excellent
Corrosion Protection	Excellent	Very Good	Very Good	Very Good
Chemical & Solvent Resistance	Excellent	Good	Good	Good
Ease of Application	Very Good	Excellent	Very Good	Very Good
Low Temperature Cure	Excellent	Very Good	Fair	Good



POWDURA® POWDER COATINGS FACILITIES

The Sherwin-Williams Chemical Coatings Division, with more than 135 years of products finishing technology, serves the products finishing industry through a North American network of company-owned locations and with expanding global reach. The Sherwin-Williams Company's broad line of low-VOC coatings, full range of technical support and just-in-time distribution capabilities permits original equipment manufacturers to specify quality coatings with assurance of regulatory compliance. Visit our web site at www.sherwin-williams.com/oem for the location of the Sherwin-Williams facility that can fulfill your powder coating needs.



POWDURA® POWDER COATINGS



For a Better Finish. Ask Sherwin-Williams.™

Special Effects



Chrome Classic-Bonded
UCF8-C0002 ●



Display Silver-Bonded
HCF8-C0008



Silver Metallic
PAM8-C0000 ★



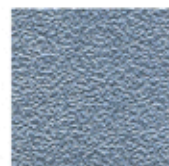
Sport Silver-Bonded ★
PAF8-C0007



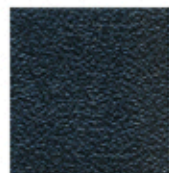
Chromal-Bonded
UCF8-C0001 ●



Gunmetal
HHF2-C0003



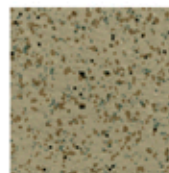
Blasted Steel
FCF2-C0000 ★



Pewter
EBF8-C0002



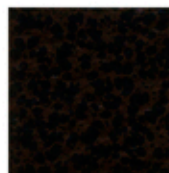
Knapsack
HHB2-C0018



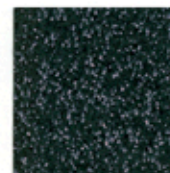
Desert Stone
PHB2-C0015



Rust
PRB2-C0001



Penny Vein-Bonded
PBM8-C0001



Green Marble
UGB8-C0000



Supreme Silver
Vein-Bonded
HBF8-C0001

- UCF8-C0002 (Chrome Classic), UCF8-C0001 (Chromal), and PAF8-C0008 (Chrome) require a clear coat at all times... such as, PCS8-C0009 Full Gloss Clear.

- ★ For exterior applications we recommend a clear top coat. (listed in the Functional section)

Spice Powder Coatings

These multi-colored powders can be applied with single application. They are highly aesthetic, protective finishes that are intended for decorative metal finishing applications. These coatings are formulated and manufactured to meet all customer appearance and performance requirements. A unique process blends multiple finished powder colors together. The result is a highly aesthetic and protective coating. These multi-colored powders are available in Epoxy, Hybrid, Urethane and TGIC Polyester chemistries and in a full range of appearances. They are suitable for many end use applications, including, but not limited to casual furniture, shelving, case goods and leisure equipment.

Metallic Powder Coatings

Are highly aesthetic, protective finishes that are intended for decorative metal finishing applications. These multi-colored powders can be applied with single application and be top-coated with clear powder for added finish performance. These coatings are formulated and manufactured to meet all customer appearance and performance requirements. Available in both blended and bonded formulations.



Midnight Black
Wrinkle
FBT2-C0002

Patio Furniture



Chrome-Bonded
PAF8-C0008 ●



Carbon 96-Bonded ★
PBF8-C0001



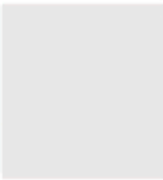






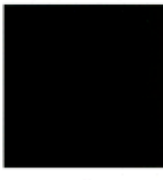

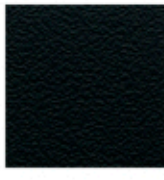
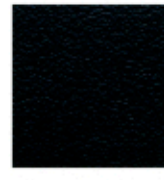
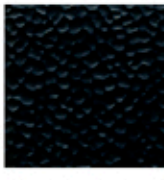

Bronze Age II
PDV8-C0001



Weather Green
UGB4-C0001



Standard • Hybrid

						
Strobe White HWS8-C0045	Antique White HWS6-C7786	Smooth Gray HAS8-C2858	Stone HAS4-C0000	Nitro Blue Text HLT2-C0006	Char Gray Text HAT2-C0111	Gloss Black HBS8-C2299
						
Box Black HBS4-C0003	Semi-Gloss Black HBS4-C2132	Blackjack HBT2-C0008	Phantom Black HBT4-C0002	Low Gloss Texture HBT2-C2621	Satin Black HBS2-C2932	

PLEASE NOTE:
For Epoxy & Hybrid
qualities exterior
applications are not
recommended.

When the mechanical film properties of an epoxy and the overbake stability of polyesters are needed, POWDURA® Hybrid powders are the perfect choice. These finishes display exceptional transfer efficiency, permitting more powder to penetrate recesses, corners, and multidimensional substrates. Available in thin-film finishes, POWDURA® Hybrid coatings are commonly specified for finishing office furniture, automotive components, shelving, and exercise equipment.

Standard • Polyester

						
Rocket White PWS8-C0025	Coastal White PWS6-C0018	Gloss White PWS8-C0016	Tech White PWS8-C0013	Whitewater PWS8-C0026	Pure White PWS8-C7479	White Powder PWS8-C0002
						
Almond PHS4-C0026	Regal Red PRS8-C0008	International Red PRS8-C0015	Bittersweet PES8-C0004	Gloss Orange PES8-C6849	Safety Orange PES8-C6148	Safety Yellow PYS8-C0007
						
NL Yellow PYS8-C8289	Campus Green PGS8-C0016	Vista Green PGS6-C0016	Fence Green PGS8-C0651	Capitol Blue PLS8-C0019	Blue Ribbon PLS8-C0002	Mirror Black PBS8-C2819
						
Ansi 70 Gray PAS8-C0003	61 Gray PAS4-C2395	49 Gray PAS6-C0001	Frame Gray PAS4-C0045	Black PBS4-C0009	Gloss Black PBS8-C0000	
						
Satin Black FBS4-C2634 TGIC-Free	Low Gloss Black PBS4-C0010	Raven Texture I PBT2-C0001	Raven Texture II PBT6-C0001	Semi-Gloss Black FBS6-C2476 TGIC-Free		

Metal Building Products



Slate Blue
PLS4-C0001



Medium Bronze
PNS4-C0002



Sandstone
PHS4-C0027



Light Gray
PAS4-C0002



Charcoal
PAS4-C0001



Bone White
PWS4-C0001



Western Tan
PHS6-C0021



Architectural
Bronze
PDS4-C0014



Legal Blue
PLS4-C0002



Forest Green
PGS4-C0001



Surrey Beige
PHS4-C0028



Royal Brown
PNS4-C0001



Barn Red
PRS4-C0001



Burgundy
PRS4-C0003

These
formulations,

Steel Shelving



HD Beige
HHS6-C0001



Oyster White
HWS8-C0046



Ultra Orange
PES8-C0006



Rack Green
PGS8-C0653

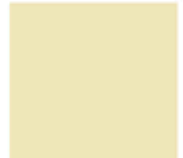


Shelf Gray
HAS4-C0003

Sherwin-Williams offers the most complete line of advanced, performance-proven, coating systems to improve throughput, insure consistency and comply with EPA regulations.



Clay
PHS4-C0029



Almond
PHS4-C0030



Metal Furniture



Warm White
HHS4-C0038



Tan
HHS4-C0036



Muslin
HWS4-C0004



Parchment
HHS4-C0035



Driftwood
HHS4-C0037



Tungsten-Bonded
HAF4-C0001



Steel-Bonded
HAF4-C0003



Gold Dust-Bonded
HNF4-C0001



Sand Texture
HHT2-C0001



Cloud
HAS4-C0001



Platinum-Bonded
HAF4-C0002



Slate Texture
HAT2-C0113

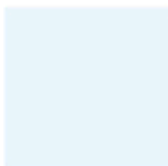


Mist
HAS4-C0005



Flint
HAS4-C0002

Electronic Enclosures



Gloss White
UWS8-C0016



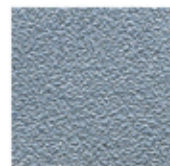
Sky White
UWS8-C0017



White Texture
PWT6-C0002



Deep Blue Texture
HLT2-C0007



Nickel Metallic
Texture-Bonded
HAF2-C0001



Iron Gray Texture
HBT2-C0009



Dark Gray Texture
HAT2-C0112



Slate Gray
PAT2-C0006



Charcoal Metallic Texture
HAF2-C0002



300 Gray
UAS4-C0002



Graphite Metallic Texture
HAF2-C0003



Gibraltar Gray
PAT2-C0007

OEM specified and approved finishes are available. Please contact your Sherwin-Williams Representative for details.



Our combination of quality products and services makes us the coatings provider of choice for electronics enclosure manufacturers. We have the products OEM's, plastic molders and metal fabricators know. Ones that protect, endure, enhance, impact and brand your products as the very best.

Breadth of Products, Names You Trust

Sherwin-Williams offers the most complete line of advanced, performance-proven, coating systems to improve throughput, insure consistency and comply with EPA regulations.

Functional



Gray Primer
EAS6-C0000



Primer Topcoat
UBS2-C0002



Postal Blue
PLS8-C0004



Seafoam Green
(Mil-P-53022/
Mil-PRF-22750)
EGS2-90007



Beach Sand
(Mil-PRF-24712A)
22563
EHS6-30003



Pastel Green
(Mil-PRF-24712A)
24585
EGS6-30001



Pastel Blue
(Mil-PRF-24712A)
25526
EAS4-30009



Clear Coats:

PCS8-C0009 - Full Gloss
PCS6-C0002 - Semi-Gloss (50°-70°)
PCS4-C0002 - Low Gloss (30°-50°)

For stand alone use or as topcoat for exterior grade Polyester or Urethane chemistries.

There are Sherwin-Williams finishing systems for a complete range of substrates including metal and plastic. Typical military applications for our coatings include:

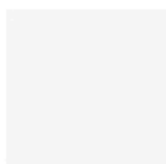
- Tactical Ground Equipment
- Military Aerospace
- Military Ground Support Equipment
- Weapons and Ammunition
- Containers
- Shelters



Standard • Urethane



Furniture White
UWS8-C0002



Chalk
UWS8-C0015



Unicream
UHS8-C0000



Regal Yellow
UYS8-C0010



Tractor Green
UGS8-C0001



Electric Blue
ULS8-C0003



61 Gray
UAS4-C0001



Machine Tool Gray
UAS8-C0009



Matte Black
UBS2-C0001



High Gloss Black
UBS8-C0000



Flat Black
UBS2-C0007

POWDURA® Polyester Urethanes deliver a high definition finish with excellent weatherability and resistance to UV exposure. Recommended for products used in interior or exterior environments. For furniture, electronic cabinetry, and automotive components, POWDURA® provides superior protection against prolonged weathering.

Standard • Epoxy



Safety Blue
ELS8-C0002



Iron Gate
EBS2-C0000



Coal
EBS8-C0000



Carbide Black
EBT2-C0000



Ebony
EBS2-C0002



Satin Black
EBS2-C2782

PLEASE NOTE:
For Epoxy & Hybrid
qualities exterior
applications are not
recommended.

For a finish with optimum film properties, POWDURA® Epoxies are the answer. Hard, impact resistant and solvent resistant, these coatings provide long-term protection to products designed for interior service environments. Applicators also benefit from flexible cure schedules, and the availability of these epoxies in both standard and low-cure formulations. Typical applications include industrial equipments, automotive underbody components, furniture, and appliances.

Specific Gravity Chart

Specific Gravity - ratio of the weight of a given volume of liquid or solid to the weight of an equal volume of water.
(ASTM Test D3451)

Typical Powder Costs:

Per square foot at 1.0mil (.001) film thickness. (Read across to closest specific gravity, and down to nearest cost. Multiply indicated cost by total film thickness. e.g., for a powder with a specific gravity of 1.6 and price of \$2.50/# applied at 2.5 mil cured film thickness, cost is determined by \$0.021 x 2.5 mils=\$0.0525 per square foot.)

		TYPICAL SPECIFIC GRAVITIES												
		1.0	1.1	1.2	1.3	1.4	1.5	1.6	1.7	1.8	1.9	2.0	2.5	3.0
TYPICAL UNIT PRICE (PER #)	1.50	.0080	.0090	.0094	.0101	.0110	.0180	.0124	.0132	.0140	.0150	.0160	.0201	.0234
	1.75	.0091	.0100	.0110	.0190	.0180	.0140	.0150	.0154	.0163	.0172	.0181	.0280	.0273
	2.00	.0104	.0160	.0130	.0140	.0150	.0160	.0170	.0180	.0190	.0200	.0210	.0260	.0312
	2.10	.0109	.0120	.0131	.0141	.0152	.0163	.0174	.0190	.0200	.0210	.0220	.0273	.0330
	2.20	.0114	.0130	.0140	.0150	.0160	.0171	.0182	.0194	.0210	.0220	.0230	.0290	.0343
	2.30	.0120	.0132	.0144	.0160	.0180	.0180	.0191	.0203	.0214	.0230	.0240	.0299	.0360
	2.40	.0130	.0140	.0150	.0162	.0174	.0190	.0200	.0213	.0224	.0240	.0250	.0312	.0374
	2.50	.0130	.0143	.0160	.0170	.0181	.0194	.0210	.0220	.0233	.0250	.0260	.0330	.0390
	2.75	.0143	.0160	.0172	.0190	.0200	.0214	.0230	.0242	.0260	.0270	.0290	.0360	.0430
	3.00	.0160	.0172	.0190	.0202	.0220	.0233	.0250	.0264	.0280	.0290	.0311	.0390	.0470
3.50	.0182	.0200	.0220	.0240	.0254	.0272	.0290	.0308	.0330	.0344	.0362	.0460	.0550	
4.00	.0208	.0230	.0250	.0270	.0290	.0311	.0331	.0352	.0373	.0393	.0414	.0520	.0623	
5.00	.0260	.0290	.0312	.0340	.0362	.0390	.0414	.0440	.0470	.0492	.0520	.0650	.0780	





Grotto
HAS4-C0004



Sterling-Bonded
HAF4-C0005



Champagne Metallic-
Bonded
HHF2-C0004



Silver-Bonded
HAF2-C0005



Silver Pearl-
Bonded
HAF4-C0004



Storm Gray-
Bonded
HAF2-C0004

excellent resistance to weathering and ultraviolet light environments, the coatings display good color and gloss. For products such as lawn/garden equipment, outdoor furniture, etc., Sherwin-Williams Urethanes provide the extra needed durability.

OEM specified and approved finishes are available. Please contact your Sherwin-Williams Representative for details.



Heavy Equipment



Equipment Blue
PLS8-C0020



Dull Black
UBS2-C0009



Equipment Tan
PHS8-C0022



Equipment Yellow
PYS8-C0008



Brite Red
PRS8-C0120



Red Letter
PRS8-C0063



Power Orange
PES8-C0005



All Gray
PAS8-C0019



Industrial Charcoal
PAS8-C0018



Dark Gray
PAS8-C0017



Enviro Green
PGS8-C0652



Jet Black
FBS4-C0001



Medium Gloss
Black
PBS6-C0001

Our combination of quality products and services makes us the coatings provider of choice for manufacturers of agricultural, construction and industrial equipment. We have the products you know. Ones that protect, endure, enhance, impact and brand your products as the very best.



These products represented in this color card have been prepared as replications of actual coated stock. However, chips may vary slightly in color and gloss from actual coatings due to the effects of heat, light, and the manufacturing process.

Wheel Rim



Starburst White
PWS8-C0028



Wheel White
PWS8-C0027



Wheel Gray
PAS8-C0016



New Rim Gray
PAS8-C0020



Overnight Gray
PAS8-C0021



Wheel Black
PBS8-C0001



When it comes to getting great value,
no one can top The Sherwin-Williams Company.

MORE SERVICE •



• MORE SOLUTIONS



With Sherwin-Williams as your powder coatings supplier, product and service support is an important part of the relationship:

- Powdura® Powder Coatings are performance-tested and manufactured to satisfy the most demanding project requirements.
- A distribution network that is second to none, even the most demanding supply chain requirements can be met.
- Solutions-driven sales and technical support
- Engineering and design services that will work with you to insure that your production line runs at peak efficiency
- Color and design support services that insure up to date and consistent color whether you are using liquid or powder coatings

For more information on how to put our expertise to work for your business, contact your Sherwin-Williams Chemical Coatings Sales Representative. Information on these services is also available via the World Wide Web at

www.sherwin-williams.com/oem or by calling 1-800-524-5979.



POWDURA® POWDER COATINGS

For a Better Finish. Ask Sherwin-Williams.™

For more information call
1-800-524-5979

www.sherwin-williams.com/oem

