



[www.purnabramha.com](http://www.purnabramha.com)

# How to Start U r Dream Franchisee!

**Dream  
Big!**





[www.purnabramha.com](http://www.purnabramha.com)

# Choose Type of franchisee





[www.purnabramha.com](http://www.purnabramha.com)

**Purnabrmaha Foodtruck**  
**Purnabrmaha Light**  
**Punabramha Potoba**  
**Punabramha Maza**  
**Purnabrmaha Sanskriti**



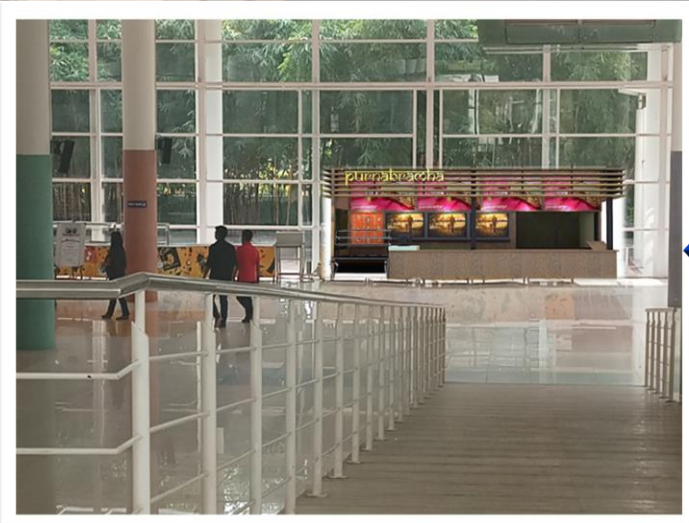


[www.purnabramha.com](http://www.purnabramha.com)

# Purnabramha Light

Only Available @ Airports

Approximate  
25 Lakhs



Required  
200 / 500  
Sq.ft Place



Inclusive of Franchise Deposit, Franchise Fee  
Interior & Kitchen , Working capital & Brand product  
Franchise Fee – 3 lakhs , Working capital – 3 Lakhs



[www.purnabramha.com](http://www.purnabramha.com)

# Purnabramha Potoba



**Required  
1000 / 1200  
Sq.ft Place**



**Approximate  
30 Lakhs**



**Inclusive of Franchise Deposit, Franchise Fee  
Interior & Kitchen , Working capital & Brand product  
Franchise Fee – 5 lakhs , Working capital – 5 Lakhs**



[www.purnabramha.com](http://www.purnabramha.com)

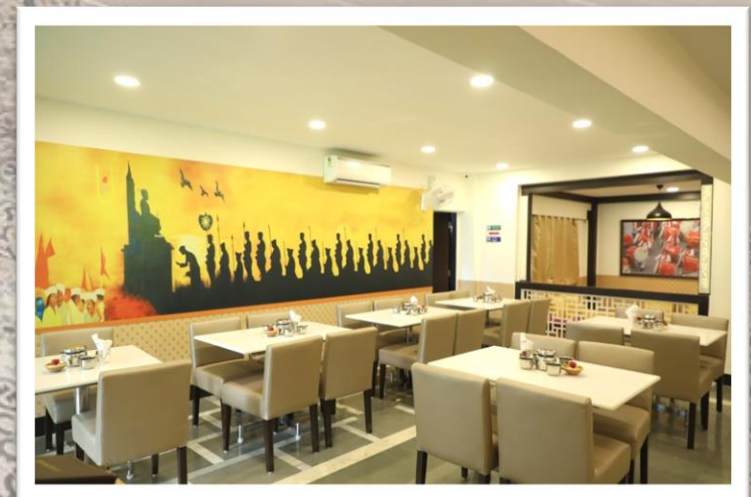
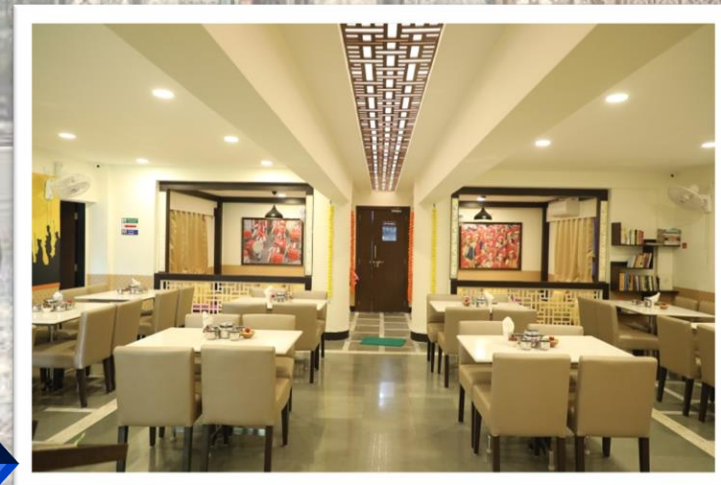
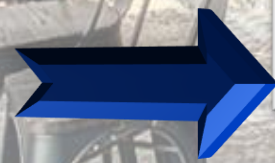
# Purnabramha Maza

← Available as Individual Setup

Approximate  
45/50 Lakhs



Required  
1500/ 2000  
Sq.ft Place



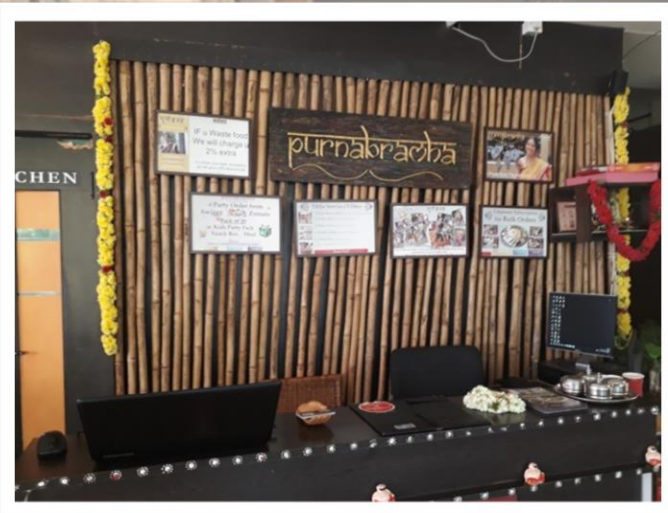
Inclusive of Franchise Deposit, Franchise Fee  
Interior & Kitchen , Working capital & Brand product  
Franchise Fee – 7 lakhs , Working capital – 7 Lakhs



[www.purnabramha.com](http://www.purnabramha.com)

# Purnabrmaha Sanskriti

← Available as Individual Setup



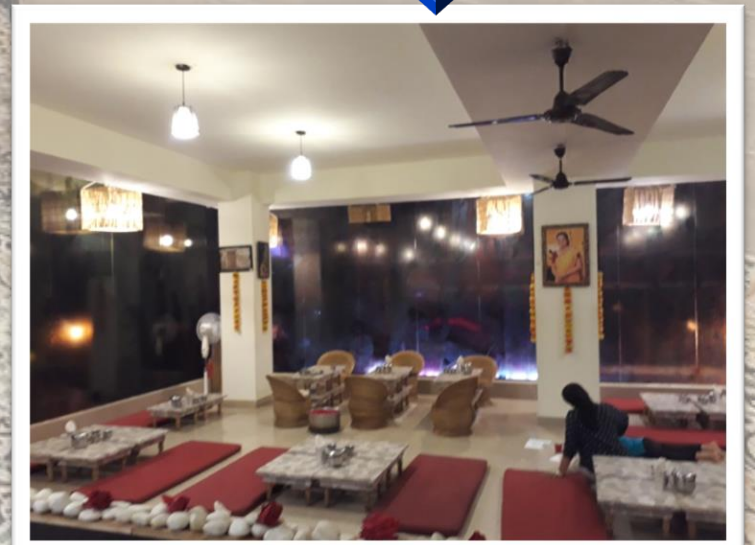
Required  
2500/ 3000  
Sq.ft Place



Approximate  
60+ Lakhs



Inclusive of Franchise Deposit, Franchise Fee  
Interior & Kitchen , Working capital & Brand product  
Franchise Fee – 9 lakhs , Working capital – 9 Lakhs





[www.purnabramha.com](http://www.purnabramha.com)

# Execution Summary

## We Give

### Option 1

1. You put the investment and we will operate it on our P & L
2. We will passon 10% revenue share from 5<sup>th</sup> month of operation started.
3. 3 years. We will make sure all Operational cost we take care of and even profit loss with lock in of 1 years
4. Team , P&L, All execution is ours and we will run the show.. And will passon 10% of the revenue
5. This offer is only available for metro cities only.,

### Option 2

1. You put the investment and take care of P&L
2. We will and should get 10% on revenue after 4<sup>th</sup> month
3. We Will send Chef & Manager for 3 month they will trained you and your team..
4. Lock in is 1 years and contract is for 5 years

**Understand the Revenue Model**





[www.purnabramha.com](http://www.purnabramha.com)

## Execution Summary

### Approximate Heads for Mandatory expenses

1. Franchise Fee – Non refundable (as per type)
2. Working Capital - Fee – Non refundable
3. Brand Product buying Fee – Non refundable ( 4.6 Lakhs)
4. Franchise Deposits Fee – refundable ( 2 Lakhs)

**Understand the Revenue Model**



[www.purnabramha.com](http://www.purnabramha.com)

# Step 1 Choose your Financial Capacity

Light 25 Lakhs  
Potoba 35 Lakhs  
Maza 45 Lakhs  
Sanskriti : 60+Lakhs

**Step 1**  
**Choose your Financial Capacity**



[www.purnabramha.com](http://www.purnabramha.com)

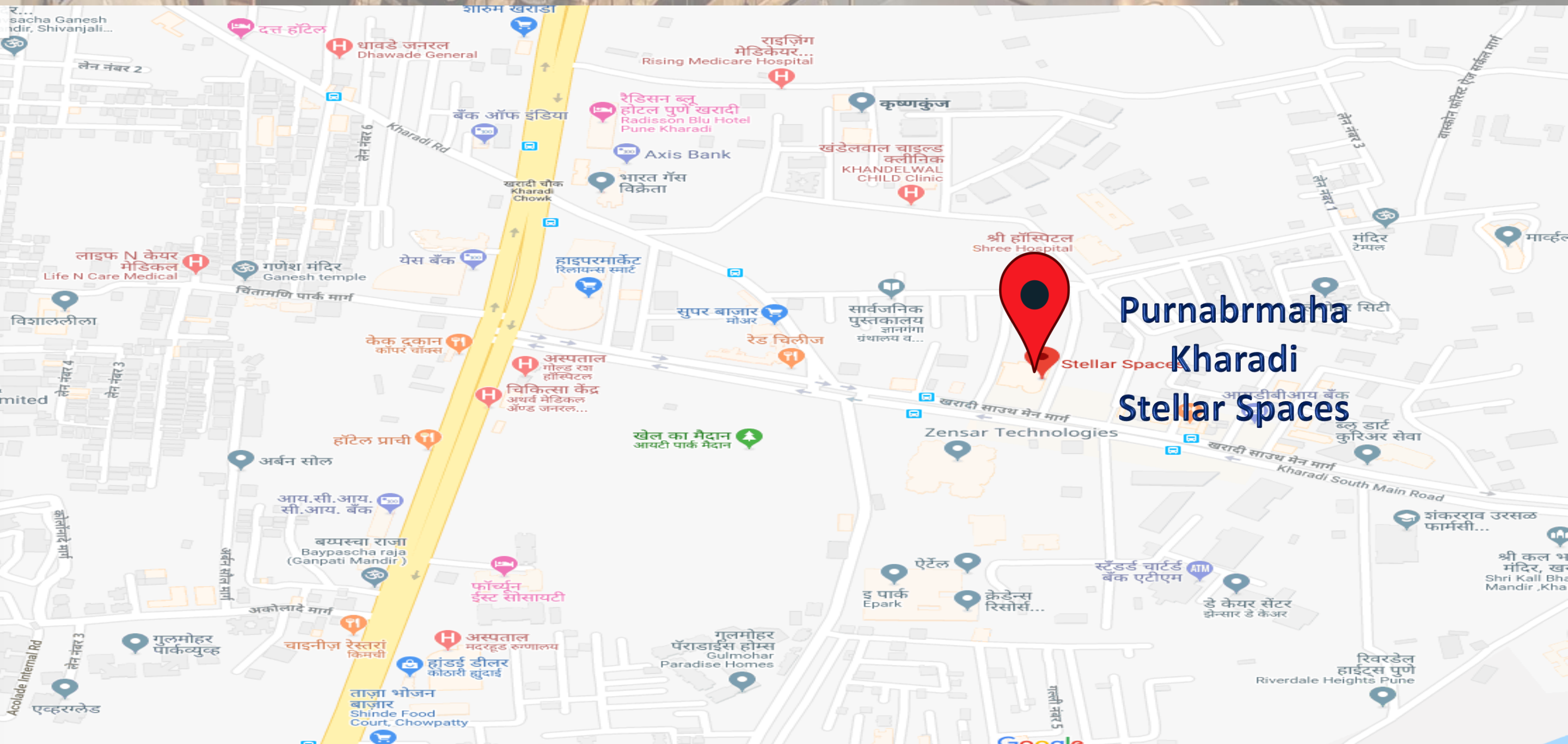


## Step 2

Choose the Area - City / Country



[www.purnabramha.com](http://www.purnabramha.com)



Step 3

Choose the Location - City / Country



[www.purnabramha.com](http://www.purnabramha.com)



**Step 4**

**Sign the Agreement / Finalized the Place**



[www.purnabramha.com](http://www.purnabramha.com)



- **Layout Designing /Approval /Confirmation**
- **Quote / approval /Review /Payment**
- **75% Payment to interior Designer**
- **Work Get started with tracker**
- **Site staff Arrangements**

## Step 5

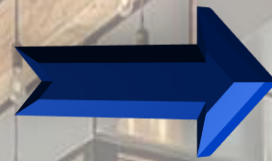
# Layout Designing & quote Finalization / Documents



www.purnabramh



Site Completion



Lic. Confirmation / Medical for employee



Training Completion for staff



Step 6

Final Stage /Licenses /Training



[www.purnabramha.com](http://www.purnabramha.com)



**Step 7**

**Dry Run /Check the System / D Day Finalized**





[www.purnabramha.com](http://www.purnabramha.com)



**Step 8**  
**Opening Day**